

» Overview

Order number: 1002351110
Order completed: 24.03.2026 11:48
Report number: 10284732
VIN: WVVZZZCD1PW522420



Front Left 3/4



Rear Right 3/4



Mileage

» Vehicle Data

Vehicle category:	Passenger Car
Vehicle type:	EstateCar
Make:	Volkswagen
Model:	Golf
Manufacturers and type code:	0603 / CNM
Date of first registration:	25.01.2023
Mileage:	94,896 km
Proof of mileage:	ReadOff
Exterior colour:	Reflexsilber Metallic
Roof colour:	Reflexsilber Metallic
Propulsion:	Front
Fuel:	Diesel
Engine size (cc):	2,000 ccm
Performance:	85 kW (116 PS)
Length:	
Height:	
Width:	
Permitted total weight:	
Wheelbase:	
Number of powered axles:	2
Cylinders:	4
Euronorm:	Euro 6
Number of doors:	4
Number of seats:	5
Gearbox:	Manual 6-speed
Upholstery type:	Lining Alcantara
Interior colour:	Soul-Schwarz/Soul-Schwarz/Schwarz/ Storm Grey
Number of keys:	2

» Documents & Maintenance

Statutory inspection date:	
Registration certificate available:	No
Registration certificate received:	No
License plate:	None
Maintenance book:	Digital
Maintenance:	Not testable
Maintenance last date:	
Maintenance last mileage:	
Remainder until next maintenance:	7,700 KM

10-color ambient lighting	Diversity antenna for FM reception
12-V outlet in luggage compartment	Door and side trim panel
2 LED reading lights in front and 2 in rear	Driver alert system
2 USB-C ports in the front, 2 USB-C charging sockets on the center console in rear, charging capacity up to 45 W	Driver and front passenger airbag with front passenger airbag deactivation
3 head restraints in rear	Driving on the right
3-point seat belt for center rear seat	Dynamic headlight range control
3-point seat belts for the outer rear seats	Dynamic Road Sign Display
3-point seat belts in front with height adjustment and seat belt pretensioners	Electric auxiliary air heater
4 alloy wheels "Norfolk" 7J x 16	Electromechanical parking brake with Auto Hold function
4-cylinder diesel engine 2.0 l	Electromechanical speed-sensitive power steering
4-cylinder diesel engine 2.0 l TDI, 85 kW	Electronic differential lock XDS
6+1 speakers	Electronic immobilizer
6-speed manual transmission	Electronic restriction of top speed
Adaptive Cruise Control ACC stop & go incl. speed limiter	Electronic Stability Control and electromechanical brake booster
Air conditioning system Climatronic with enhanced air filter with activated carbon	Elimination of nameplate for engine designation on luggage compartment lid
Alloy spare wheel with original equipment tire	Emergency call service; no registration required, service is activated upon delivery
Alloy spare wheel with original equipment tire	Emission standard EU6 AP
Alternator 140 A	Equipment options subset for Germany
App-Connect incl. App-Connect Wireless for Apple CarPlay and Android Auto	Ext. mirrors, power-adjustable and heated, with memory feature and front passenger ext. mirror lowering function
Auto. Emergency Braking Front Assist with Pedestrian and Cyclist Monitoring	Extended pedestrian protection
Automatic headlight control with LED separate daytime running light and entry and exit lighting	Exterior mirrors: aspherical on driver side, convex on front passenger side
Automatically-heated washer nozzles in front	First aid kit, warning triangle and safety vest
Battery 420 A (70 Ah)	Front center armrest, height- and longitudinally adjustable
Black roof rails	Front seats with height adjustment
Body-colored bumpers	Front stabilizer bar
Body-colored exterior mirror housings and door handles	Front-wheel drive
Body-colored rear spoiler	Fuel system for diesel engine
Business Premium package	Gearshift knob in leather
Car2X	Headliner
Carpet mats in front and rear	Heated front seats
Chrome elements on power mirror and window regulator switches, chrome trims on the vents	Highway light
Comfort equipment	Illuminated door handle recesses
Curtain airbags in front and rear, side airbags in front, center airbag	Illuminated vanity mirrors in sun visors
Decorative inserts "Nature Cross Brushed" for dashboard and front door trim panels	Initial standard fuel filling
Digital radio reception DAB+	Inserts of front seats and outer rear seats in ArtVelours microfleece
Dimming interior rearview mirror	Instrument cluster with electronic speedometer, odometer and trip odometer, tachometer
Disc brakes in front	ISOFIX anchors for child seats on outer rear bench seats and on front passenger seat, compatible for i-Size
Disc brakes in rear	Keyless Start without SAFELOCK

Laminated safety glass windshield, heat- and sound-insulating	Special identification label for EC for M1 passenger vehicles
Leather-wrapped multi-function steering wheel, heated	Sports comfort seats in front
LED headlamps	Sports comfort seats in front
LED rear combination lamps	Standard battery/alternator capacity
Left-hand drive	Standard climatic zones
License plate carrier in front and rear (ECE)	Standard electronic engine sound
LongLife Service Regime	Standard engine starter
Lumbar supports in front	Standard manufacturing sequence
Manual in German (Germany)	Standard paint coating
Manual transmission MQ281	Standard pedal cluster
Mobile phone interface "Comfort" with inductive charging feature	Standard rear axle
Multi-color Digital Cockpit Pro, selection of different info profiles possible	Standard wheel bolts
Multifunction camera	Start-stop system with regenerative braking
Navigation system "Discover Media" incl. Streaming & Internet	Surround lighting with welcome light
Net partition	Suspension range 06 installation control only, no requirement forecast
No special edition	Tailgate/trunk lid unlocking from outside
No special purpose vehicle, standard equipment	Tire Pressure Monitoring System
Non-folding front passenger seat backrest	Tire suppliers for EU countries
Non-smoker's package: Storage compartment and 12-V outlet in front	Tires 205/55 R16
Not hot country	Tool kit and jack
Oncoming vehicle braking when turning and swerve support	Transport protection film (minimum protection) with additional transport protection measures
Online service, with OCU, with head unit coding, without engine immobilizer interconnection	Two-tone horn
Operating permit, alteration	Type approval country Germany
Operating voltage 12 V	Unsplit rear bench seat, asymmetric split folding backrest, with center armrest
Park Distance Control - warning signals for obstacles in the front and rear	UWB-capable country and carrier frequency, 433.92 to 434.42 MHz
Part set without country-specific prescriptive standard	Variant
Preparation for We Connect and We Connect Plus	Vehicle class differentiation -5H0-
Privacy glass for rear side windows and rear window	Vehicles without special upgrade measures
Proactive passenger protection system in combination with Front Assist	Voice control
Radio	Wagon
Rear exhaust tailpipe (standard)	Warning signal and warning light for front and rear seat belts not fastened
Rear floor panel module, type 4	Weight range 9 installation control only, no requirement forecast
Rear fog light on one side, back-up light on both sides	Wheelbase
Rear shock absorption, basic version 1	Windshield wiper intermittent control with light sensor
Refrigerant R1234yf	Without activated carbon canister with SCR
Regional code " ECE " for radio	Without Adaptive Chassis Control
Remote unlocking for rear seat backrest	Without additional decorative trims
Safety-optimized front head restraints	Without additional front underbody guard
Semi-automated driving assistance TravelAssist and lane keeping system Lane Assist	Without additional tires
Service indicator 30 000 km or 2 years (variable)	Without alternative drive system
Shock absorption in front	Without auxiliary heater/parking heater

Without camera systems/accident sensors
Without charging cable
Without curb weight range
Without decals and emblems
Without electric motor (hybrid)
Without fire extinguisher
Without headlamp washer system, with washer fluid level indicator
Without head-up display
Without hill start assist/hill descent control/comfort driving assist
Without interior light in footwell
Without lane change assist
Without light control
Without locking and starting systems
Without mode 3 charging cable
Without preparation for rotating beacon/siren combination
Without preparation for two-way radio installation
Without rear stabilizer bar
Without roof insert (standard roof)
Without seat ventilation/massage seat
Without second battery
Without special body measures
Without trailer hitch

» Tyres

MOUNTED TYRES

There are currently one or more wheel sets on/in the vehicle that are not included in the scope of delivery.

Make	Location	Position	Type	Rim	Dimensions	Profile depth
Semperit	Front	Left	Winter	Aluminium	205/55 R 16 91 T	7.0 mm
Semperit	Front	Right	Winter	Aluminium	205/55 R 16 91 T	7.0 mm
Semperit	Rear	Left	Winter	Aluminium	205/55 R 16 91 T	6.0 mm
Semperit	Rear	Right	Winter	Aluminium	205/55 R 16 91 T	6.0 mm

Permitted: Yes

Roadworthy: Yes

UNMOUNTED TYRES

Make	Location	Position	Type	Rim	Dimensions	Profile depth
Uniroyal			Summer	Aluminium	205/55 R 16 91 V	5.0 mm
Uniroyal			Summer	Aluminium	205/55 R 16 91 V	5.0 mm
Uniroyal			Summer	Aluminium	205/55 R 16 91 V	5.0 mm
Uniroyal			Summer	Aluminium	205/55 R 16 91 V	5.0 mm

Permitted: Yes

Roadworthy: Yes

SPARE/EMERGENCY TYRE & ACCESSORIES

Spare tyre provided: Yes

Make	Location	Position	Type	Rim	Dimensions	Profile depth
Falken	Spare		Summer	Aluminium	205/55 R 16 91 V	7.0 mm

Permitted: Yes

Roadworthy: Yes

Toolkit present: Yes

Jack present: Yes

» Devaluation Factors

Nr	Location	Damage type	Repair type
1	Additional rim(s)	Scratch(es)	Replace Safety relevant damage
2	Bumper R	Scratch(es)	Paint
3	Door window RR	Scratch(es)	Replace
4	Preparationtime plastic painting	Paint preparation	Execute
5	Bodywork	Water damage	Diagnosis Damage extension possible
6	Grille	Broken	Replace
7	Side wall RL	Dent(s)	Spot repair
8	Engine insulation	Tear	Replace
9	Bodywork	Lettering	Remove lettering
10	Additional tyre(s)	Hole	Replace
11	Bumper FL	Scratch(es)	Touch up

» Usage Damages

Nr	Location	Damage type	Repair type
1	Windscreen	Stone chip(s)	Acceptable
2	Door FL	Scratch(es)	Acceptable

» Commercial devaluation

Accidental vehicle:	Yes
Known previous damages:	No
Previous damages detectable:	No
Repainting present:	Yes
Repainting professionally executed:	Yes
Paint thickness measurement performed:	Yes - with abnormalities/deviations

PAINTHICKNESS MEASUREMENT RESULTS

Part	Paint (µm)
Paint thickness Wing RR (µm)	1,050.0

At least 3 measurements were carried out per component.

» Notes On The Assessment

Details of the assignment and the scope of the assessment:

The order was placed to prepare a condition report on the described vehicle.

The vehicle condition assessment was carried out in accordance with the order on the basis of the standards for vehicle assessments specified by the client. The expert makes the findings in the individual case on the basis of his own expertise and at his own expert discretion.

Vehicle identification:

WVWZZZCD1PW522420

VIN checked and matches documentation

Vehicle condition:

Well maintained general condition

Inspection condition:

Sufficient

Colour matching:

The vehicle color no longer corresponds to the delivery condition.

Lifting platform/lifting equipment used:

Yes

Testdrive carried out:

Yes

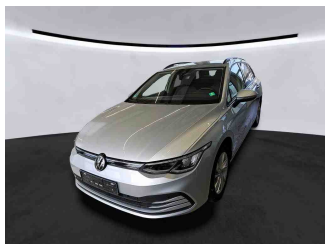
Engine test carried out:

Yes

» **Remarks**

This copy was generated electronically. It is valid without an original signature.

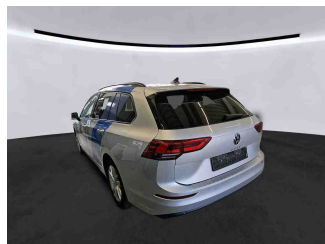
» Commercial Pictures



Front Left 3/4



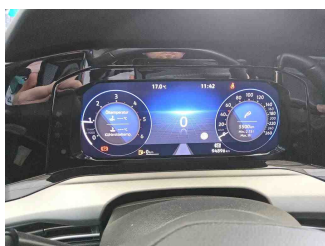
Front Right 3/4



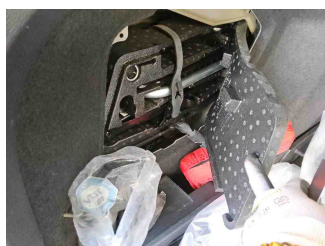
Rear Left 3/4



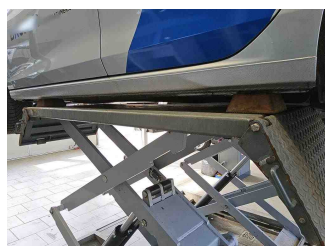
Rear Right 3/4



Mileage



Tools



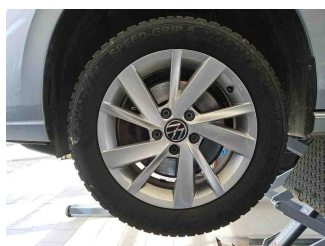
Sill outer L



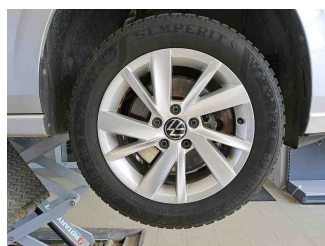
Sill outer R



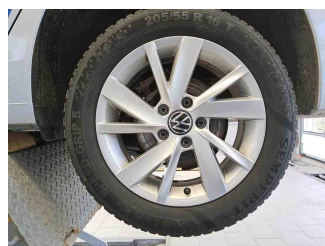
Chassis nr



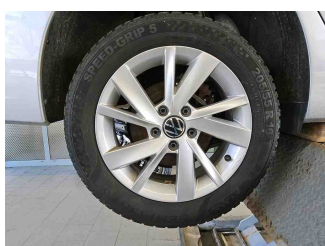
Wheel FL



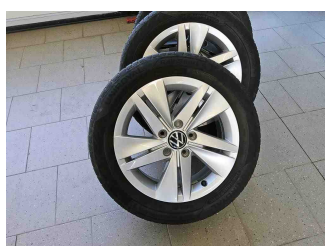
Wheel FR



Wheel RL



Wheel RR



Additional wheel 1



Additional wheel 2



Additional wheel 3



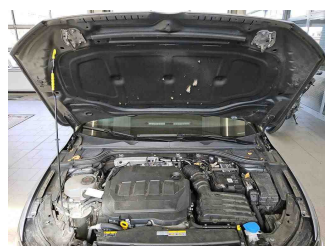
Additional wheel 4



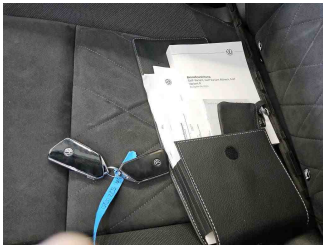
Spare wheel



Central console



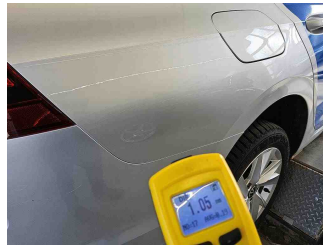
Engine compartment



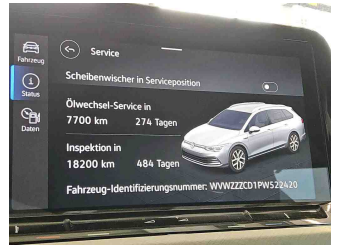
Documents



Interior arrangement



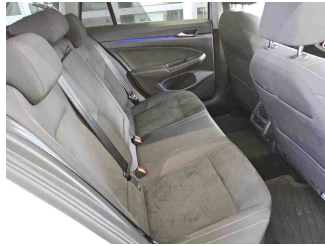
Paint thickness Wing RR



History Maintenance



Interior - front



Interior - rear



Underbody scan



GPS/Radio

» Devaluation Damages

DEVALUATION FACTORS

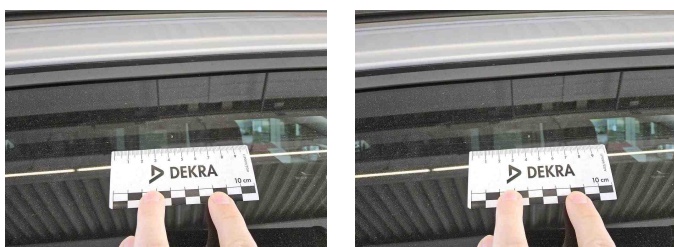
1 - Additional rim(s) - Scratch(es) - Replace
Safety relevant damage



2 - Bumper R - Scratch(es) - Paint



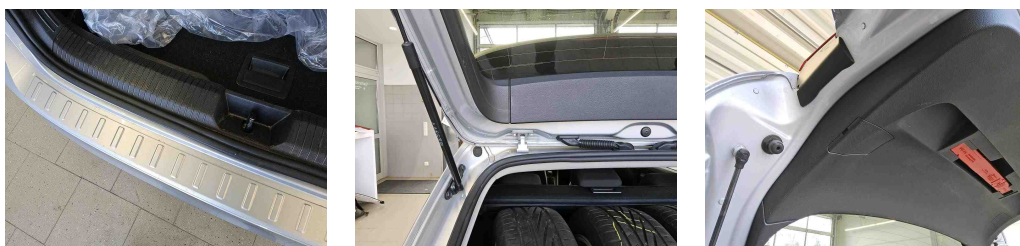
3 - Door window RR - Scratch(es) - Replace



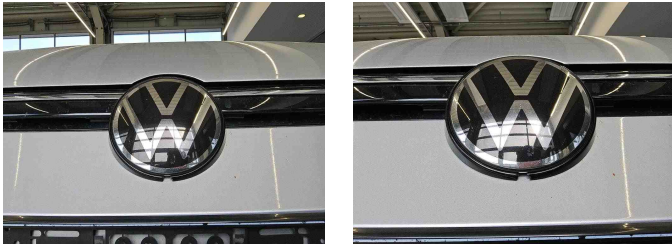
4 - Preparationtime plastic painting - Paint preparation - Execute

5 - Bodywork - Water damage - Diagnosis
Damage extension possible

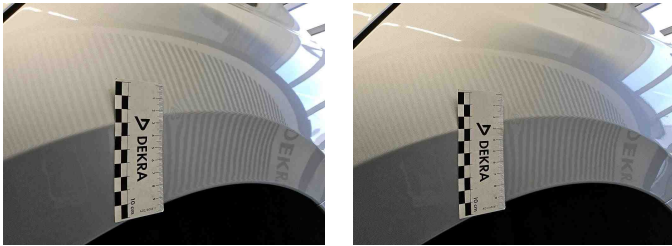
Comment	Wasserschaden in vorheriger Duenstleistung gesichtet, aktuell trockene Wetterlage
---------	---



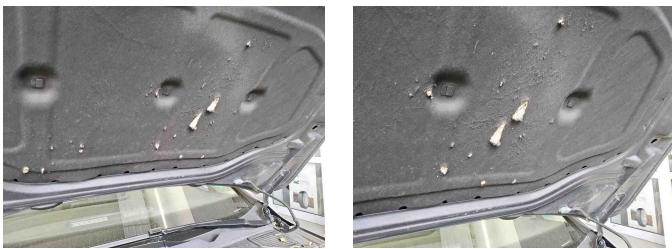
6 - Grille - Broken - Replace



7 - Side wall RL - Dent(s) - Spot repair



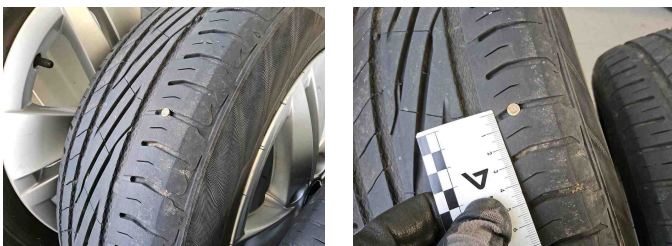
8 - Engine insulation - Tear - Replace



9 - Bodywork - Lettering - Remove lettering



10 - Additional tyre(s) - Hole - Replace



11 - Bumper FL - Scratch(es) - Touch up



USAGE DAMAGES

1 - Windscreen - Stone chip(s) - Acceptable



2 - Door FL - Scratch(es) - Acceptable

