

Expertise

Protocol number: 46004139
Order No. / Reference: 26451761
Inspection date: 16 Jun 2026

Manufacturer: Opel

Model: Vivaro 2.0 D Cargo L EHZ Autm. Elegance

VIN: VXEVFEHZ7N7022943



Vehicle details

Manufacturer / Type / Model / Equipment

Opel Vivaro 2.0 D Cargo L EHZ Autm. Elegance

Vehicle Identification number VXEVFEHZ7N7022943

Mileage (Read) 36,850 km

First registration 7 Jun 2022

Number of holders 1

Power / Engine displacement 130 kw / 1,997 ccm

Fuel type / Cylinder Diesel / 4

Gearbox / Number of gears Automatic / 8

Type of drive Front drive

Type of vehicle Van

Colour / colour code TYPE HABILLAGE
EXTERIEUR PLATE
STANDARD

Doors / Seats 4 / 3

Upholstery type Cloth

Colour of upholstery Black-Grey



Vehicle details

Maintenance booklet / proof	digital proof / complete	Next maintenance in	7,120 km
Last service on / at	12/2024 at 22,554 km		
Key is / should be	2 / 2	FZG documents	ZB#2 (B) was available (copy), ZB#1 (S) was not available.
		Letter No.	GJ679351
Previous damage / Accident	None detectable	Repainting	None detectable
Inspection conditions	sufficient	Lifting equipment / pit	yes
Test drive	Not performed	Engine function test	Performed
Manufacturer key number/ type code number	3003 / AXZ 01163		
Emission standard	EURO6;WLTP;AR;PI/CI;N1 III, N2	fine dust sticker	
Permitted total weight	3,100 kg	Empty weight	

Tyres

Mounted tyres

#	Tyre size	Type of tyre	Manufacturer	Tread depth
1)	215/65 R16 109T	Winter tyres on Steel	Bridgestone	5mm / 5mm
2)	215/65 R16 109T	Winter tyres on Steel	Bridgestone	7mm / 7mm

Additional tyres

#	Tyre size	Type of tyre	Manufacturer	Tread depth
1)	215/65 R16 106T	Summer tyres on Steel	Michelin	7mm / 7mm
2)	215/65 R16 106T	Summer tyres on Steel	Michelin	8mm / 8mm

Replacement

Typ	Tyre size	Type of tyre	Manufacturer	Tread depth
	Tirefit	Expiration date 02/2026		

Legend: Tread depth information for the left tire is listed first, for the right tire it is listed second on the axle in the direction of travel.



Equipment

Standard equipment

- Storage compartments (storage compartment in the center console, front - storage shelf above the windshield, open - storage compartment in the front doors, suitable for 1.5-liter beverage bottles - glove compartment, open - storage compartment on dashboard, passenger side, closed)
- Exterior mirror housings in black
- Hill Start Assist
- On-board computer
- Diesel particulate filter, maintenance-free
- Three-point seat belts on all seats (belt force limiter, front - double belt tensioners, front - warning tone and light for unfastened seat belts, front)
- Speed controller and limiter
- Grab handle in the first row of seats, passenger side
- Air conditioning, front with particle and odor filter (recirculation mode, manual)
- Steering column, adjustable for reach and height
- Fatigue detection level 1 coffee break
- Package: Driver Assistance Package 1 (High Beam Assist - Driver Alert System with Camera Monitoring - Lane Keeping Assist - Traffic Sign Recognition with Intelligent Speed Control - Solar Reflect Windscreen)
- Radio accessories: Digital radio reception DAB+ (Digital Audio Broadcasting) (Offers a wider selection of radio programs. Digitally broadcast radio stations and traffic information can be received.)
- Wheels: Tire repair kit (with tire sealant and 12-volt compressor (without jack))
- Wheels: Steel wheels 7 J x 16 with wheel hub cover (tires 215/65 R 16 C 106T)
- Side impact protection
- Speed-sensitive power steering
- Seats: Comfort driver's seat and double passenger seat (comfort driver's seat adjustable in 6 ways, with armrest and lumbar support - double passenger seat with storage under the seat - height-adjustable headrests, front)
- Daytime running light
- Traction control with engine and brake intervention (TC Plus)
- Doors: Sliding door, passenger side
- Lashing eyes (8) in the cargo area
- Heat-insulating glazing, tinted
- Payload increased by +300 kg
- ABS including brake assist and adaptive brake light
- Driver and passenger side airbags (front airbag, passenger airbag, deactivatable)
- Anti-lock braking system (ABS) with cornering brake control and brake assist
- Exterior mirrors, electrically folding, heated and adjustable
- Battery discharge protection
- Floor covering: Cargo area floor, painted
- third brake light
- Tachometer
- Electric parking brake
- Electronic Stability Program (ESP Plus)
- Electric front windows (with one-touch function)
- Transmission: 8-speed automatic
- Glove compartment closed at the top (cooled and illuminated)
- Steering wheel: Comfort steering wheel (PU), flattened at the bottom
- Fog light
- Park pilot, front and rear parking aid (with acoustic warning signal when parking forwards and backwards - blind spot warning - electrically folding exterior mirrors - fog lights)
- Radio: Multimedia radio with 7" color touchscreen display (Automatic music recognition for audio devices with USB connection, Bluetooth audio streaming, Digital radio reception DAB+, Hands-free system via Bluetooth interface, Display of phonebook and call lists, Up to 10 mobile phones can be paired, Display of pictures/films/videos via USB interface, Smartphone integration, Voice control, 1 USB interface, Dual tuner, Graphic equalizer, 4 speakers (8 in double cab Edition or Elegance))
- Side protection strips (in black)
- Visibility equipment (rain sensor - automatic dipped headlights)
- Sun visors, driver and passenger
- 12-volt power outlet in the center console
- 12V power outlet in the cargo area and in the lower glove compartment (2nd row of seats, left side of cargo area)
- Partition wall: closed, without windows
- Doors: Rear wing doors, sheet metal with a 180° opening angle
- Electronic immobilizer
- Central locking with remote control
- Ignition key (2), foldable



Extra equipment

- Paint finish: Solid color paint
- Package: Design package (front and rear bumpers in body color - door handles in body color - exterior mirror housings in black - exterior mirrors, electrically adjustable, heated and folding - side protection strip in body color - fog lights - LED daytime running lights)
- 180° panoramic reversing camera (displays the area behind the vehicle up to 180 degrees, including steering guidelines, when reverse gear is engaged, in the color display of the infotainment system.)
- Seats: Comfort driver's seat and multifunctional double passenger seat (comfort driver's seat adjustable in 6 ways, with armrest and lumbar support - multifunctional double passenger seat with pass-through function and DIN A4 desk - headrests, height adjustable)
- Steering wheel: Multifunction leather steering wheel
- Radio: Multimedia Navi Pro with 7" color touchscreen display and voice control for audio, telephone and navigation (automatic music recognition (title, album, artist, cover) for audio devices with USB connection, Bluetooth audio streaming, hands-free calling via Bluetooth interface, up to 10 mobile phones can be paired, image display via USB interface, navigation system with integrated memory, OpelConnect with telematics services, map of Europe, 3D map display, TMC GPS module, smartphone integration via Apple CarPlay and Android Auto, 1 USB interface, dual tuner, graphic equalizer)
- Partition wall: closed with window (FlexCargo function)
- Doors: Rear wing doors, glazed with a 180° opening angle (and heated rear window wipers)

Brief expert findings

Documents submitted	At the time of the inspection, the vehicle registration certificate Part 2 (title) was available, but the vehicle registration certificate Part 1 (document) was not. (Copy)
VIN comparison	The vehicle identification number (VIN) was read from the vehicle and its conformity with the submitted documents was confirmed by the undersigned during the inspection.
Inspection	The inspection conditions were sufficient for the assessment of the vehicle. Lifting equipment and/or a pit were available for examining the vehicle.
Test drive	No test drive/shunting maneuver was carried out during the inspection of the vehicle.
Engine function test	An engine test run was performed.

Value reducing factors

No.	Component group	Description
1	Misc.	Main inspection - No evidence - No deduction
2	Equipment	Tirefit filler - Expired - Replace
3	Trim / covers	Door trim - rear left side - Scratch(es) - Loss in value
4	Trim / covers	Door trim - rear right side - Scratch(es) - Loss in value
5	Wing mirror - left side	Cap - Scratch(es) - Repaired
6	Sill - left side	Sill - Scratch(es) - Smart repair
7	Sill - right side	Sill - Dent / paintcoat damage - Smart repair
8	Door - front right side	Brightware - lower - Scratch(es) - Smart repair
9	Side panel - rear left side	Side panel - Scratch(es) - Smart repair
10	Trim / covers	Trim / covers - Scratch(es) - Smart repair
11	Door - front right side	Door - Dent / paintcoat damage - Smart repair
12	Sliding door, right	Sliding door - Dent / paintcoat damage - Smart repair
13	Drive train	Sleeve prop shaft - front left side - Broken / torn - Replace
14	Engine	Engine cover - Broken / torn - Replace
15	Door - rear right side	Brightware - lower - Scratch(es) - Paint
16	Rear bumper	Bumper - rear right side (Eckteil) - Broken / torn - Replace
17	Front bumper	Front bumper - Dent / paintcoat damage - Repair and paint



Wear and tear

No.	Component group	Description
1	Side panel - rear right side	Side panel - dent(s) - No deduction
2	Rear bumper	Rear bumper (unpainted) - Scratch(es) - No deduction
3	Roof	Roof - dent(s) - No deduction
4	Vehicle glazing	Windscreen - Stone chips - No deduction

The vehicle shows signs of wear and tear commensurate with its age and use.

Order/Scope of Order

An order was placed to prepare a sales report for the described vehicle. This report includes the following:

- Description of key vehicle information
- Documentation of equipment features
(*Delivery by third-party service providers*)
- Documentation of damage, defects, missing parts
- Documentation of prior damage, unrepaired prior damage, repainting
- A brief visual or functional inspection of the equipment details, if possible.
(*Functional testing of driver assistance systems is not included in the scope of services!*)
- a photographic documentation of the vehicle

Basis for the order

This product is based on the guidelines for vehicle returns and valuations published by Alphabet Fleet GmbH. The expert makes the specific findings in each individual case objectively, within the framework of the prescribed standards, based on their own expertise.

The vehicle inspection takes place in a fully assembled, unassembled state.

Damage or defects that can only be detected during disassembly/diagnostic work or through further investigation remain within the realm of prognostic risk. An increased risk exists due to concealed defects caused by fraudulent misrepresentation and which were not identifiable by the expert.

Damage or defects resulting from normal use or wear and tear of the vehicle will be accepted in accordance with the applicable standard.

There was no explicit identification or monetary consideration of the expected features within the product.

Features which, in their nature and extent, slightly exceed normal use but do not constitute unacceptable damage, will be documented and indicated as signs of wear, if applicable.

Damage or defects that, according to the applicable standard, can no longer be attributed to normal use or wear and tear are listed under "Value Reducing Factors" in the product description.

Depending on the product specification, a monetary ID can be provided. If this takes place, the costs can be 100% d or pro rata depending on the vehicle's age and mileage.

Previous damages

No apparent prior damage that had been repaired could be found on the vehicle.



Figure 1: Diagonal front (left)



Figure 2: Diagonal front (right)



Figure 3: Diagonal rear (left)



Figure 4: Diagonal rear (right)

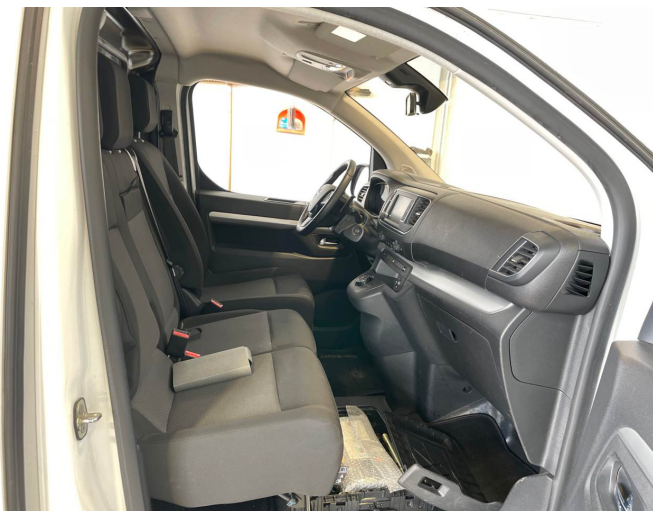


Figure 5: Interior - front



Figure 6: Interior - rear



Figure 7: Instrument cluster



Figure 8: Instrument panel



Figure 9: Interior 360° view



Figure 10: Cargo area



Figure 11: VIN



Figure 12: Mounted tyres



Figure 13: Documents



Figure 14: Additional tyres



Figure 15: Additional tyres



Figure 16: Navigation



Figure 17: Misc.



Figure 18: Misc.



Figure 19: Misc.



Figure 20: Misc.

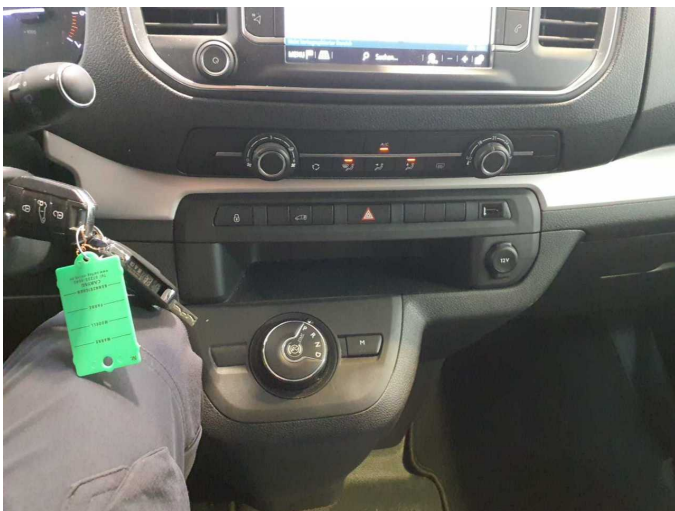


Figure 21: Misc.



Figure 22: Misc.

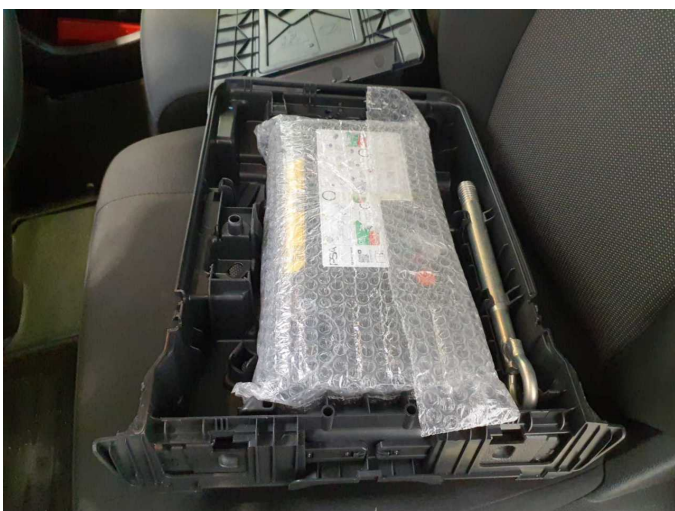


Figure 23: Misc.



Figure 24: Misc.



Damage 3: Trim / covers: Door trim - rear left side - Scratch(es) - Loss in value



Damage 3: Trim / covers: Door trim - rear left side - Scratch(es) - Loss in value



Damage 4: Trim / covers: Door trim - rear right side - Scratch(es) - Loss in value



Damage 5: Wing mirror - left side: Cap - Scratch(es) - Repaired



Damage 5: Wing mirror - left side: Cap - Scratch(es) - Repaired



Damage 5: Wing mirror - left side: Cap - Scratch(es) - Repaired



Damage 6: Sill - left side: Sill - Scratch(es) - Smart repair



Damage 6: Sill - left side: Sill - Scratch(es) - Smart repair



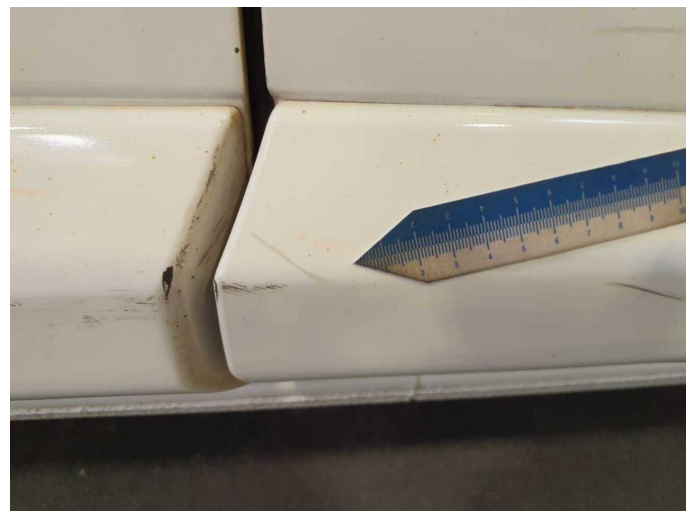
Damage 7: Sill - right side: Sill - Dent / paintcoat damage - Smart repair



Damage 7: Sill - right side: Sill - Dent / paintcoat damage - Smart repair



Damage 8: Door - front right side: Brightware - lower - Scratch(es) - Smart repair



Damage 8: Door - front right side: Brightware - lower - Scratch(es) - Smart repair



Damage 9: Side panel - rear left side: Side panel - Scratch(es) - Smart repair



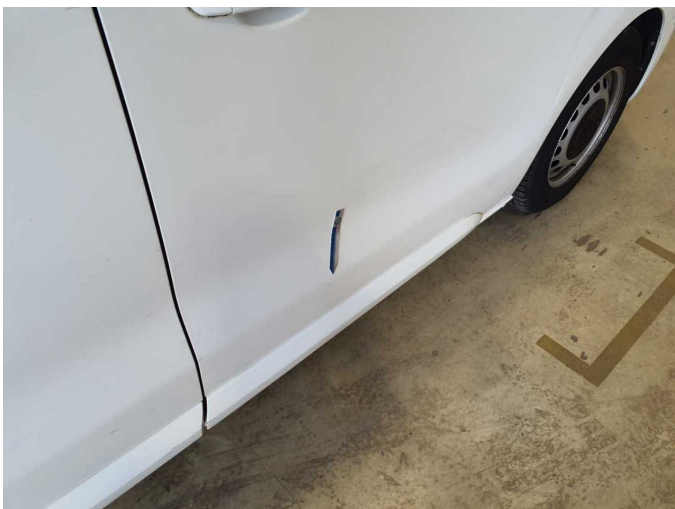
Damage 9: Side panel - rear left side: Side panel - Scratch(es) - Smart repair



Damage 10: Trim / covers: Trim / covers - Scratch(es) - Smart repair



Damage 10: Trim / covers: Trim / covers - Scratch(es) - Smart repair



Damage 11: Door - front right side: Door - Dent / paintcoat damage - Smart repair



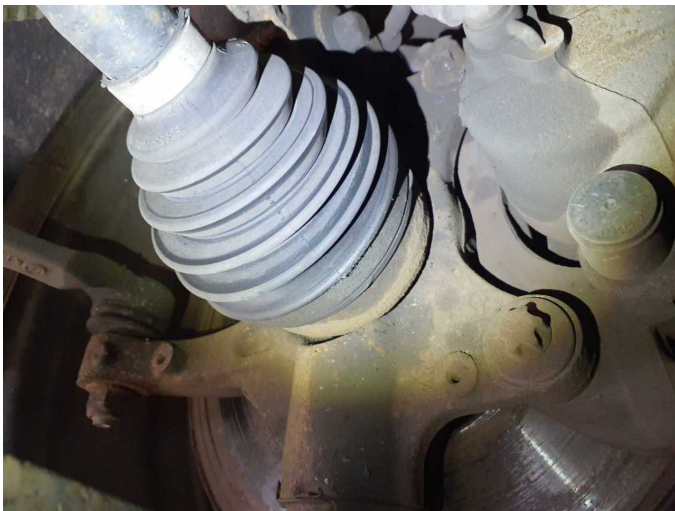
Damage 11: Door - front right side: Door - Dent / paintcoat damage - Smart repair



Damage 12: Sliding door, right: Sliding door - Dent / paintcoat damage - Smart repair



Damage 12: Sliding door, right: Sliding door - Dent / paintcoat damage - Smart repair



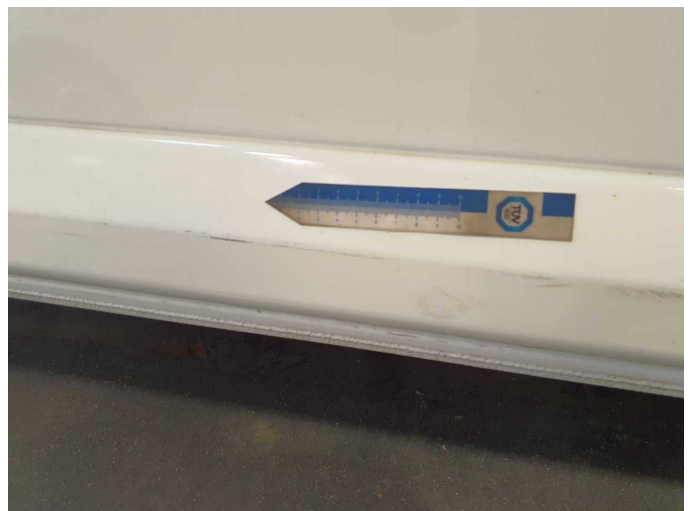
Damage 13: Drive train: Sleeve prop shaft - front left side - Broken / torn - Replace



Damage 14: Engine: Engine cover - Broken / torn - Replace



Damage 15: Door - rear right side: Brightware - lower - Scratch(es) - Paint



Damage 15: Door - rear right side: Brightware - lower - Scratch(es) - Paint



Damage 15: Door - rear right side: Brightware - lower - Scratch(es) - Paint



Damage 16: Rear bumper: Bumper - rear right side (Eckteil) - Broken / torn - Replace



Damage 16: Rear bumper: Bumper - rear right side (Eckteil) - Broken / torn - Replace



Damage 17: Front bumper: Front bumper - Dent / paintcoat damage - Repair and paint



Damage 17: Front bumper: Front bumper - Dent / paintcoat damage - Repair and paint



Damage 17: Front bumper: Front bumper - Dent / paintcoat damage - Repair and paint



Damage 17: Front bumper: Front bumper - Dent / paintcoat damage - Repair and paint