

Expertise

Protocol number: 46195698
Order No. / Reference: 26577641
Inspection date: 26 Jun 2026

Manufacturer: Opel

Model: Insignia Grand Sport 2.0 Diesel Automatik Business

VIN: W0VZT6GP4N1008873



Vehicle details

Manufacturer / Type / Model / Equipment

Opel Insignia Grand Sport 2.0 Diesel Automatik Business

Vehicle Identification number W0VZT6GP4N1008873

Mileage (Read) 135,271 km

First registration 22 Apr 2022

Number of holders 1

Power / Engine displacement 128 kw / 1,995 ccm

Fuel type / Cylinder Diesel / 4

Gearbox / Number of gears Automatic / 8

Type of drive Front drive

Type of vehicle Saloon car

Colour / colour code Mondstein Grau Metallic

Doors / Seats 5 / 5

Upholstery type Cloth / leather combination

Colour of upholstery Black-Anthracite



Vehicle details

Maintenance booklet / proof	digital proof / complete	Next maintenance in	82 %
Last service on / at	04/2026 at 134,987 km		
Key is / should be	2 / 2	FZG documents	ZB#2 (B) was available (copy), ZB#1 (S) was not available.
		Letter No.	GJ658420
Previous damage / Accident	Detectable	Repainting	Detectable
Inspection conditions	sufficient	Lifting equipment / pit	yes
Test drive	Not performed	Engine function test	Performed
Manufacturer key number/ type code number	1844 / AMB 00266		
Emission standard	EURO6;WLTP;AP;PI/CI; M, N1 I	fine dust sticker	
Permitted total weight	2,200 kg	Empty weight	

Tyres

Mounted tyres

#	Tyre size	Type of tyre	Manufacturer	Tread depth
1)	225/55 R17 101V	Winter tyres on Light alloy	Dunlop	5mm / 5mm
2)	225/55 R17 101V	Winter tyres on Light alloy	Dunlop	5mm / 5mm

Additional tyres

#	Tyre size	Type of tyre	Manufacturer	Tread depth
1)	225/55 R17 97W	Summer tyres on Light alloy	Bridgestone	4mm / 4mm
2)	225/55 R17 97W	Summer tyres on Light alloy	Continental	5mm / 5mm

Legend: Tread depth information for the left tire is listed first, for the right tire it is listed second on the axle in the direction of travel.



Equipment

Standard equipment

- Storage compartments
- Airbag: Front airbags and side airbags, driver and front passenger
- Anti-lock braking system (ABS)
- Hill Start Assist
- third brake light
- Decorative strip hexagon
- Tachometer
- Electronic Stability Program (ESP Plus)
- Front collision warning system with pedestrian detection and automatic emergency braking
- Speed controller
- Back window, heater
- Automatic climate control, two zones
- Rear headrests (3 pieces)
- LED fog lights
- Steering column adjustable for height and reach
- Illuminated makeup mirrors in both sun visors
- Package: Winter 1 (AGR, Driver)
- Parkpilot, front and rear parking aid
- Radio: Digital radio reception DAB+
- Tire repair kit
- Tire pressure gauge
- Rear seat backrest folds forward in a 60:40 split
- Power steering
- safety net
- Lane Keeping Assist
- Bumpers painted in body color
- Traffic sign assistant
- Immobiliser
- Central locking with remote control
- Adaptive brake light
- Airbag: Front and rear outer head airbags
- Ambient lighting
- Electrically adjustable and heated exterior mirrors for driver and passenger side
- Glasses compartment in the headliner
- Diesel particulate filter
- Electronic brake force distribution (EBD)
- Electric windows front and rear
- Pedestrian protection including active hood
- Noise-reducing, laminated front side windows
- Transmission: 8-speed automatic transmission
- Child safety lock in the rear doors, manual
- Front headrests
- LED headlights
- LED daytime running lights including LED indicators, front and LED taillights
- Center armrest, front
- Electric parking brake
- Quickheat rapid heating system
- Radio: Multimedia Navi Pro with 8" color touchscreen display
- Wheels: 7.5 J x 17 alloy wheels in a 5 double-spoke design
- Seat belts: Three-point seat belts in all seats
- Visibility equipment
- Start/Stop System
- Traction Control (TC) Plus
- Pre-installation for child seat mounting system "ISOFIX"
- Thermal insulation glazing, green tinted



Extra equipment

- Airbag: Side airbags, rear outer (seatbelt warning for unfastened seatbelts, rear (child seat attachment system remains activated))
- Electric glass sliding/tilting roof (with pre-selection function and spoiler position, including anti-pinch protection, comfort closing function via radio remote control of the central locking system, and manually operated sunshade)
- Package: Communication package (Emergency call - Communication System with Fleet Management Service)
- Package: Innovations 2 (automatic transmission) (Head-up display - Adaptive cruise control (Generation 3), Stop & Go function - Forward collision warning with pedestrian detection and automatic emergency braking, active from 4 km/h, range 150 m. In case of risk of collision, the braking system is prepared and, if necessary, emergency braking / automatic emergency braking is initiated - Traffic sign recognition)
- Package: Sound (Bose sound system)
- Paint finish: Metallic
- Swiveling trailer hitch (including trailer stability program)
- Anti-theft alarm system (burglar alarm - deterrent signal - ultrasonic interior monitoring - tilt monitoring - monitoring of trunk, doors, hood, rear window (on Sports Tourer) and rims - horn and tow-away protection - mechanical door locking)
- Package: Business Premium (Easy Access Package: Keyless locking and starting system, sensor-controlled tailgate, electric loading sill protection, stainless steel - Charging Package: Wireless charging, 2 USB ports, rear center console - Park & Go: Digital reversing camera, reversing assistant, lane change assistant, blind spot warning in both exterior mirrors - Innovation Package 1: IntelliLux LED Pixel headlights, traffic sign assistant - Solar Protect heat-insulating glass, heavily tinted, in the rear)
- Upholstery: Monita fabric/Premium leather look including Winter Package 2 (Ergonomic active seat, certified by the Campaign for Healthy Backs (AGR), front/front seat heating, multi-stage, front/front heated leather steering wheel, heated ThermoTec windshield, Seat Comfort Equipment 1: 8-way electrically adjustable driver's seat, electro-pneumatically adjustable lumbar support, memory function - driver and exterior mirrors, massage function, front exterior mirrors, electrically adjustable, heated, folding rear seat backrest with FlexFold function, 40:20:40 split, Charging Package: Wireless charging, 2 USB ports)

Brief expert findings

Documents submitted	At the time of the inspection, the vehicle registration certificate Part 2 (title) was available, but the vehicle registration certificate Part 1 (document) was not. (Copy)
VIN comparison	The vehicle identification number (VIN) was read from the vehicle and its conformity with the submitted documents was confirmed by the undersigned during the inspection.
Inspection	The inspection conditions were sufficient for the assessment of the vehicle. Lifting equipment and/or a pit were available for examining the vehicle.
Test drive	No test drive/shunting maneuver was carried out during the inspection of the vehicle.
Engine function test	An engine test run was performed.

Wear and tear

No.	Component group	Description
1	Bonnet	Bonnet - Stone chips - No deduction
2	Vehicle glazing	Windscreen - Stone chips - No deduction
3	Front bumper	Front bumper - Stone chips - No deduction

The vehicle shows signs of wear and tear commensurate with its age and use.

Missing parts

Description

Equipment - Tirefit complete



Previous damages

No.	Previous damage	Extent of damage (Net)
1	Roof, Side - left, Side right, Professionally repaired, Invoice of repair done Non-existent	

Repainting

No.	Repainting
1	Roof, Side panel - rear right side, Door - rear left side, Door - rear right side, Door - front left side, Door - front right side, Professionally carried out, Invoice of repair done Non-existent

Paint coat thickness measurement

Roof	301 µm	Boot lid / rear door	301 µm
Side panel - rear right side	287 µm	Door - rear left side	167 µm
Door - rear right side	241 µm	Door - front left side	266 µm
Door - front right side	273 µm		

Order/Scope of Order

An order was placed to prepare a sales report for the described vehicle. This report includes the following:

- Description of key vehicle information
- Documentation of equipment features
(*Delivery by third-party service providers*)
- Documentation of damage, defects, missing parts
- Documentation of prior damage, unrepaired prior damage, repainting
- A brief visual or functional inspection of the equipment details, if possible.
(*Functional testing of driver assistance systems is not included in the scope of services!*)
- a photographic documentation of the vehicle

Basis for the order

This product is based on the guidelines for vehicle returns and valuations published by Alphabet Fleet GmbH. The expert makes the specific findings in each individual case objectively, within the framework of the prescribed standards, based on their own expertise.

The vehicle inspection takes place in a fully assembled, unassembled state.

Damage or defects that can only be detected during disassembly/diagnostic work or through further investigation remain within the realm of prognostic risk. An increased risk exists due to concealed defects caused by fraudulent misrepresentation and which were not identifiable by the expert.

Damage or defects resulting from normal use or wear and tear of the vehicle will be accepted in accordance with the applicable standard.

There was no explicit identification or monetary consideration of the expected features within the product.

Features which, in their nature and extent, slightly exceed normal use but do not constitute unacceptable damage, will be documented and indicated as signs of wear, if applicable.

Damage or defects that, according to the applicable standard, can no longer be attributed to normal use or wear and tear are listed under "Value Reducing Factors" in the product description.

Depending on the product specification, a monetary ID can be provided. If this takes place, the costs can be 100% d or pro rata depending on the vehicle's age and mileage.

Previous damages

Professionally repaired previous damages were found at the vehicle.



Comments

Wartungshistorie gemäß Auftraggeber Informationen.

Der montierte Winterradsatz ist nicht Bestandteil der Ausstattung.



Figure 1: Diagonal front (left)



Figure 2: Diagonal front (right)



Figure 3: Diagonal rear (left)



Figure 4: Diagonal rear (right)



Figure 5: Interior - front



Figure 6: Interior - rear



Figure 7: Instrument cluster



Figure 8: Instrument panel



Figure 9: Interior 360° view



Figure 10: Cargo area



Figure 11: VIN



Figure 12: Mounted tyres



Figure 13: Documents

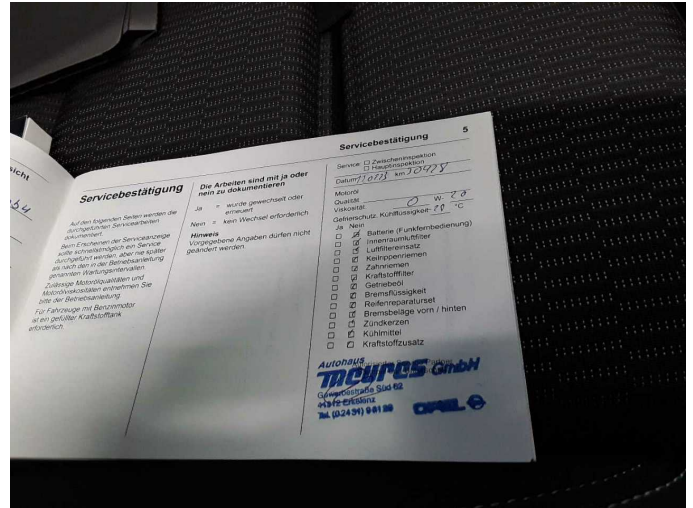


Figure 14: Documents

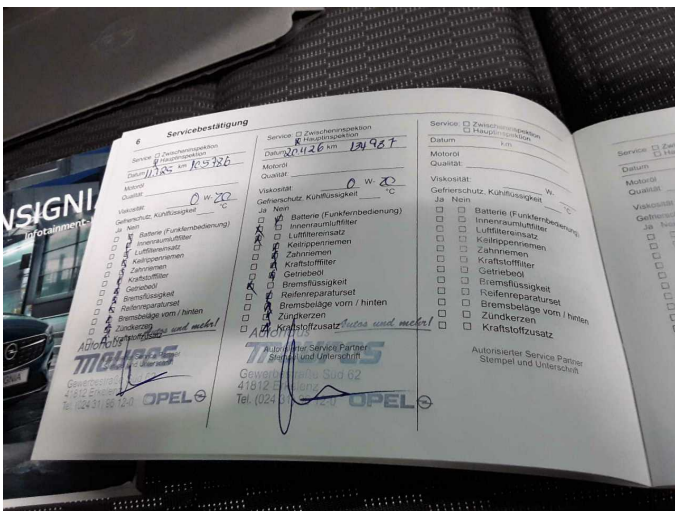


Figure 15: Documents



Figure 16: Additional tyres

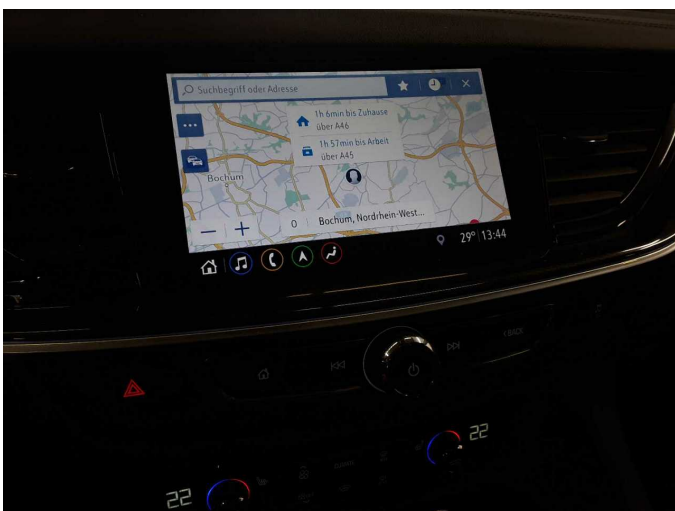


Figure 17: Navigation



Figure 18: Misc.



Figure 19: Misc.



Figure 20: Misc.



Figure 21: Misc.



Figure 22: Misc.



Figure 23: Misc.



Figure 24: Misc.



Figure 25: Misc.



Figure 26: Misc.



Figure 27: Misc.



Figure 28: Misc.



Figure 29: Misc.

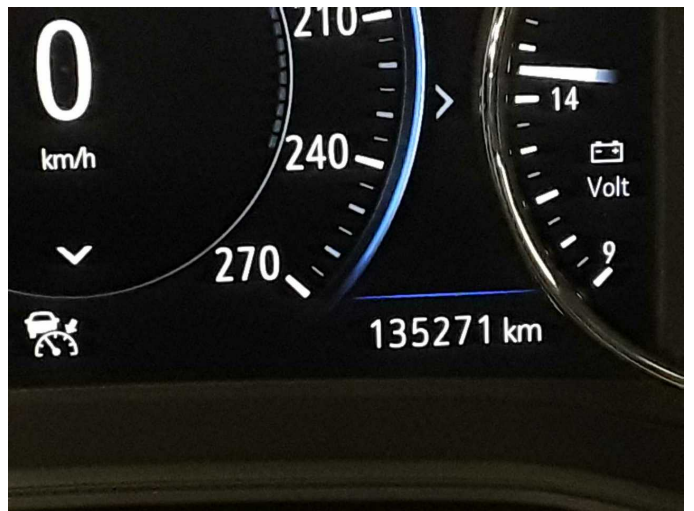


Figure 30: Misc.

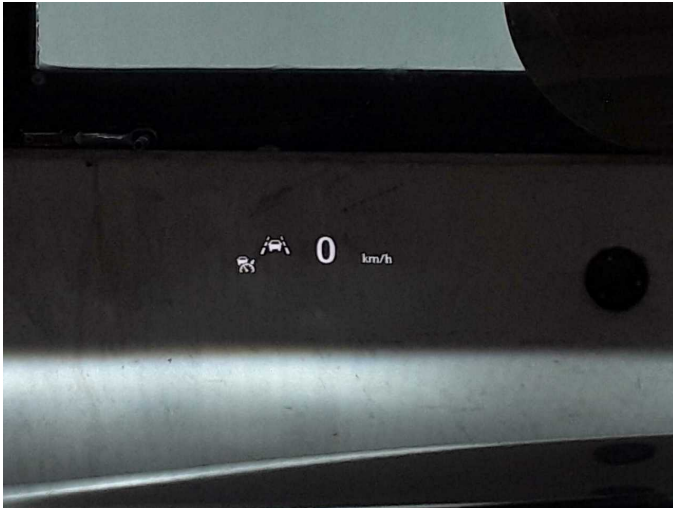
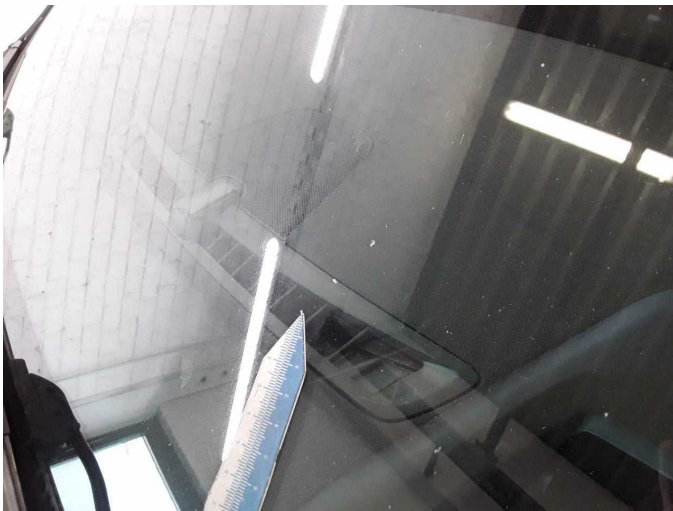


Figure 31: Misc.



Figure 32: Misc.



Wear and tear 2: Vehicle glazing: Windscreen - Stone chips - No deduction



Wear and tear 3: Front bumper: Front bumper - Stone chips - No deduction



Missing part 1: Equipment: Tirefit complete - Missing - Replace



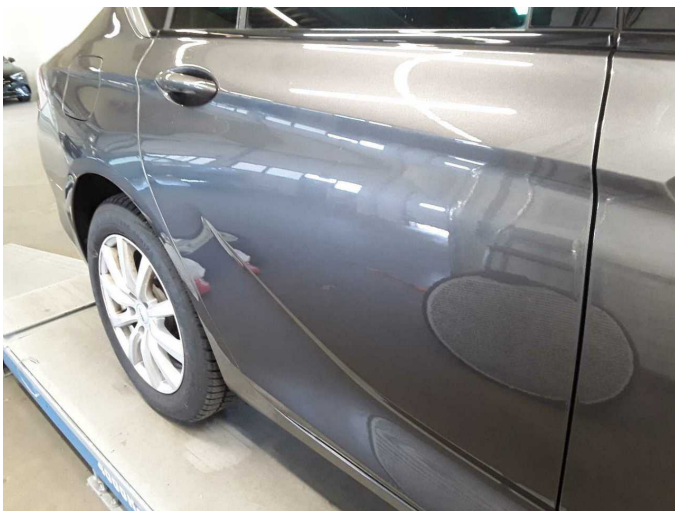
Repainting 1: Roof, Side panel - rear right side, Door - rear left side, Door - rear right side, Door - front left side, Door - front right side



Repainting 1: Roof, Side panel - rear right side, Door - rear left side, Door - rear right side, Door - front left side, Door - front right side



Repainting 1: Roof, Side panel - rear right side, Door - rear left side, Door - rear right side, Door - front left side, Door - front right side



Repainting 1: Roof, Side panel - rear right side, Door - rear left side, Door - rear right side, Door - front left side, Door - front right side



Repainting 1: Roof, Side panel - rear right side, Door - rear left side, Door - rear right side, Door - front left side, Door - front right side



Repainting 1: Roof, Side panel - rear right side, Door - rear left side, Door - rear right side, Door - front left side, Door - front right side



Repainting 1: Roof, Side panel - rear right side, Door - rear left side, Door - rear right side, Door - front left side, Door - front right side



Repainting 1: Roof, Side panel - rear right side, Door - rear left side, Door - rear right side, Door - front left side, Door - front right side



Repainting 1: Roof, Side panel - rear right side, Door - rear left side, Door - rear right side, Door - front left side, Door - front right side



Repainting 1: Roof, Side panel - rear right side, Door - rear left side, Door - rear right side, Door - front left side, Door - front right side



Repainting 1: Roof, Side panel - rear right side, Door - rear left side, Door - rear right side, Door - front left side, Door - front right side



Repainting 1: Roof, Side panel - rear right side, Door - rear left side, Door - rear right side, Door - front left side, Door - front right side



Repainting 1: Roof, Side panel - rear right side, Door - rear left side, Door - rear right side, Door - front left side, Door - front right side



Repainting 1: Roof, Side panel - rear right side, Door - rear left side, Door - rear right side, Door - front left side, Door - front right side



Wartungshistorie

(gemäß Auftraggeber Informationen)

Fahrgestellnummer: W0VZT6GP4N1008873

Hersteller / Modell: OPEL OPEL Insignia Grand Sport 2.0 Diesel Automatik Business

Datum	KM-Stand	Beschreibung
14.04.2026	134.987	Kraftstofffilter ern; Luftfiltereinsatz ern; Motoröl b. Wartung; Ölfilter ern; Regelwartungsdienst; Wartung Sonstiges
10.07.2025	105.786	AU; Motoröl b. Wartung; Ölfilter ern; Regelwartungsdienst; Wartung Sonstiges
03.07.2025	104.465	Bremsklötze hinten; Bremsscheiben + Klötze h; Bremsscheiben hinten
21.08.2024	77.208	Bremsflüssigkeit; Bremsflüssigkeit ern; Kraftstofffilter ern; Luftfiltereinsatz ern; Motoröl b. Wartung; Ölfilter ern; Regelwartungsdienst; Wartung Sonstiges
17.02.2023	30.428	Motoröl b. Wartung; Ölfilter ern; Regelwartungsdienst; Wartung Sonstiges