

Expertise

Protocol number: 45855301
Order No. / Reference: 26473113
Inspection date: 8 Jun 2026

Manufacturer: Mercedes-Benz

Model: A 250 4Matic 8G-DCT Lim. AMG Line Advanced Plus

VIN: W1K3G4HB9PJ423224



Vehicle details

Manufacturer / Type / Model / Equipment

Mercedes-Benz A 250 4Matic 8G-DCT Lim. AMG Line Advanced Plus

Vehicle Identification number W1K3G4HB9PJ423224

Mileage (Read) 101,591 km

First registration 30 May 2023

Number of holders 1

Power / Engine displacement 165 kw / 1,991 ccm

Fuel type / Cylinder Hybrid Petrol / E / 4

Gearbox / Number of gears Automatic / 8

Type of drive Front drive

Type of vehicle Saloon car

Colour / colour code digitalweiß Metallic

Doors / Seats 4 / 5

Upholstery type Leather

Colour of upholstery Red-Black

Vehicle with smoke odor no



Vehicle details

Maintenance booklet / proof	digital proof / complete	Next maintenance in	145 Tag(e)
Last service on / at	10/2025 at 79,329 km		
Key is / should be	2 / 2	FZG documents	ZB#2 (B) was available (copy), ZB#1 (S) was not available.
		Letter No.	GV674315
Previous damage / Accident	None detectable	Repainting	None detectable
Inspection conditions	sufficient	Lifting equipment / pit	yes
Test drive	short drive on the company premises	Engine function test	Performed
Manufacturer key number/ type code number	2222 / BLQ 00005		
Emission standard	EURO6;WLTP;AP;PI/CI; M, N1 I	fine dust sticker	
Permitted total weight	2,080 kg	Empty weight	

Tyres

Mounted tyres

#	Tyre size	Type of tyre	Manufacturer	Tread depth
1)	225/45 R18 95V	Winter tyres on Light alloy	Goodyear	5mm / 5mm
2)	225/45 R18 95V	Winter tyres on Light alloy	Goodyear	6mm / 6mm

Additional tyres

#	Tyre size	Type of tyre	Manufacturer	Tread depth
1)	225/45 R18 91W	Summer tyres on Light alloy	Pirelli	5mm / 5mm
2)	225/45 R18 91W	Summer tyres on Light alloy	Pirelli	4mm / 4mm

Replacement

Typ	Tyre size	Type of tyre	Manufacturer	Tread depth
Tirefit		Expiration date 06/2028		

Legend: Tread depth information for the left tire is listed first, for the right tire it is listed second on the axle in the direction of travel.



Equipment

Standard equipment

- Storage compartment in center console with roller blind
- Adaptive Highbeam Assist
- Airbag: Automatic passenger airbag deactivation
- Airbag: Kneebag for driver
- Airbag: Windowbag for driver and front passenger
- Ambient lighting
- AMG rear apron with chrome trim and visible tailpipe trims
- Traction control (ASR)
- Foldable armrest in the center console for driver and front passenger
- Heated exterior mirrors (left and right), electrically adjustable from inside
- Double cup holder at the front
- ECO start/stop function
- Electronic Stability Program (ESP)
- Chassis: Comfort chassis with lowered suspension
- Electric windows (4-way)
- Luggage net on driver and passenger seatbacks
- Transmission: 8G-DCT automatic
- Black fabric headliner
- Mechanical child safety lock
- Communication module (LTE) for the use of Mercedes me connect services
- Paint finish: Solid
- Steering wheel: Multifunction sports steering wheel in Nappa leather
- Navigation: MBUX Navigation Premium
- Package: KEYLESS-GO comfort package
- Package: Parking package with reversing camera
- Package: Mirror package
- Upholstery: ARTICO leatherette/MICROCUT microfiber
- Radio accessories: USB interface in the storage compartment & 2 USB interfaces in the rear center console
- Radio accessories: Central Media Display
- Remote Services
- Windscreen wipers with rain sensor
- Crosswind Assist
- Seats: 4-way lumbar support
- Seats: Heated seats for driver and front passenger
- Sport brake system
- Power outlet: 12V connection
- Cruise control
- TIREFIT with tire inflation compressor
- Fully digital instrument display
- High-visibility vest for drivers
- Heat-insulating glass, green all around
- Decorative elements microfiber MICROCUT
- ABS - Anti-lock Braking System
- Adaptive brake light flashing
- Airbag: Driver and front passenger
- Airbag: Side airbag for driver and front passenger
- 4MATIC all-wheel drive
- AMG floor mats
- AMG sports pedal assembly made of brushed stainless steel with rubber studs
- Rear armrest
- ATTENTION ASSIST
- Outdoor temperature display
- Brake assist, active
- Third brake light
- Door sills with the lettering "Mercedes-Benz"
- Driving light assistant
- Vehicle key with chrome decorative frame
- Fingerprint scanner
- Speed Limit Assistant
- Heated rear window
- KEYLESS-GO start function
- THERMATIC automatic climate control
- Rear headrests (3)
- Fuel tank with a capacity of 51 liters
- LED High Performance Headlights
- Steering: Direct steering
- Mercedes-Benz emergency call system
- Otto particulate filter
- Package: Light and Visibility Package
- Package: Seating comfort
- Package: USB Package Plus
- Radio accessories: Digital radio (DAB)
- Radio: Extended MBUX functions
- Radio: MBUX multimedia system
- Tire pressure monitoring system
- Wheels: 45.7 cm (18") AMG light-alloy wheels, 4 in 5-twin-spoke design
- Seat belts A-Class
- Seats: Rear seat backrests foldable 40/20/40 split
- Seats: Sports seats
- Lane Keeping Assist, active
- Phone accessories: Wireless charging system for mobile devices
- Touchpad
- Pre-installation for digital key handover
- Electronic immobilizer
- Central locking



Extra equipment

- Towbar with ESP trailer stabilization (Easily and conveniently lock and unlock the ball neck at the touch of a button.)
 - Paint finish: Metallic
 - MULTIBEAM LED (18 individually controllable high-performance LEDs per module, low beam/high beam in LED projection technology, Adaptive Highbeam Assist Plus, Active Cornering Light when high beam is activated, Country Road, City, Highway, Bad Weather and Extended Fog Light with road illumination optimized for the driving situation, Cornering Light with roundabout and intersection function in conjunction with hard drive navigation, Adaptive full-LED taillights with automatic adjustment of light intensity to the surroundings)
 - Package: Load compartment (consisting of: - 12V socket - Cargo position of the rear seatbacks (only for A-Class compact sedan, not for A 250 e) - Net on the left and right sides - Reversible mat)
 - Package: Night (AMG) (Exterior mirror housings painted in night black solid color - Beltline trim strip and window line trim strip in high-gloss black - Heat-insulating dark tinted glass from the B-pillar - AMG front apron with front splitter in high-gloss black - AMG rear apron with trim element in high-gloss black - 45.7 cm (18") AMG light-alloy wheels in 5-twin-spoke design, aerodynamically optimized, painted black and polished with 225/45 R 18 on 7.5 J x 18 ET49)
 - Package: Winter package (heated steering wheel - heated windshield washer system)
 - Upholstery: Two-tone leather
 - Wheels: 45.7 cm (18") AMG light-alloy wheels, 4-piece set in 5-twin-spoke design (aerodynamically optimized, painted black and polished with 225/45 R 18 tires on 7.5 J x 18 ET 49 rims)
 - Auxiliary heater (including auxiliary ventilation in summer)
 - Traffic Sign Assistant
 - Type designation removed from trunk lid
- GUARD 360° Vehicle Protection Plus (Break-in and theft warning - Towing protection with visual and audible warning upon detected change in position - Audible alarm - Interior monitoring (triggers upon movement inside the vehicle) - Assistance with vehicle theft (theft assistance), free for 3 years from activation - Emergency key deactivation, free for 3 years from activation - GUARD 360° label on the front side windows - Collision detection, free for 3 years from activation, additionally with camera images in conjunction with 360°)
 - Package: AMG leather (light longitudinal-grain aluminum trim elements - contrasting topstitching on the instrument panel)
 - Package: Driving Assistance in conjunction with AMG Line Premium (Active Distance Assist DISTRONIC (Active Speed Limit Assist, Extended Automatic Restart on Highways, Route-Based Speed Adaptation with Traffic Jam Radio) - Active Steering Assist (Active Emergency Stop Assist with SOS Radio, Emergency Lane Radio) - Active Brake Assist (Turning and Intersection Function, Traffic Jam Emergency Braking Function) - Evasive Steering Assist - Active Lane Keeping Assist - Active Blind Spot Assist (Exit Warning Function) - Traffic Sign Assist (Pedestrian Warning Function in the Area of Zebra Crossings) - PRE-SAFE PLUS)
 - Package: Premium Plus (THERMOTRONIC automatic climate control - Blind Spot Assist with exit warning function - Illuminated door sills with "Mercedes-Benz" lettering and interchangeable covers - MBUX Augmented Reality for navigation - Advanced sound system - Pre-installation for MBUX Entertainment - Head-up display - MBUX Interior Assistant - MULTIBEAM LED with Adaptive Highbeam Assist Plus - Parking package with 360° camera - Electrically adjustable front seats with memory function - Panoramic sliding sunroof)
 - Decorative elements, black open-pore linden wood

Brief expert findings

Documents submitted	At the time of the inspection, the vehicle registration certificate Part 2 (title) was available, but the vehicle registration certificate Part 1 (document) was not. (Copy)
VIN comparison	The vehicle identification number (VIN) was read from the vehicle and its conformity with the submitted documents was confirmed by the undersigned during the inspection.
Inspection	The inspection conditions were sufficient for the assessment of the vehicle. Lifting equipment and/or a pit were available for examining the vehicle.
Test drive	A short maneuvering and shunting exercise was carried out on the company premises.
Engine function test	An engine test run was performed.



Value reducing factors

No.	Component group	Description
1	Side panel - rear right side	Side panel - Scratch(es) - Smart repair
2	Rear bumper	Rear bumper - Scratch(es) - Smart repair
3	Rear bumper	Spoiler (Rechts + Links) - Scratched - Replace
4	Body	Underbody panelling - Broken / torn - Replace
5	Sill - right side	Trim - Scratched - Paint
6	Front bumper	Front bumper (+ Blende rechts gebrochen erneuern) - Scratched - Repair and paint

Wear and tear

No.	Component group	Description
1	Wheel / tyres	Alloy rim - front right side - Scratched - No deduction
2	Wheel / tyres	Alloy rim - rear right side - Scratched - No deduction
3	Mudguard - right side	Mudguard - right side - Stone chips - No deduction
4	Bonnet	Bonnet - Stone chips - No deduction
5	Roof	Roof rail - right side - Stone chips - No deduction
6	Side panel - rear left side	Side panel - dent(s) - No deduction

The vehicle shows signs of wear and tear commensurate with its age and use.

Order/Scope of Order

An order was placed to prepare a sales report for the described vehicle. This report includes the following:

- Description of key vehicle information
- Documentation of equipment features
(*Delivery by third-party service providers*)
- Documentation of damage, defects, missing parts
- Documentation of prior damage, unrepaired prior damage, repainting
- A brief visual or functional inspection of the equipment details, if possible.
(*Functional testing of driver assistance systems is not included in the scope of services!*)
- a photographic documentation of the vehicle

Basis for the order

This product is based on the guidelines for vehicle returns and valuations published by Alphabet Fleet GmbH. The expert makes the specific findings in each individual case objectively, within the framework of the prescribed standards, based on their own expertise.

The vehicle inspection takes place in a fully assembled, unassembled state.

Damage or defects that can only be detected during disassembly/diagnostic work or through further investigation remain within the realm of prognostic risk. An increased risk exists due to concealed defects caused by fraudulent misrepresentation and which were not identifiable by the expert.

Damage or defects resulting from normal use or wear and tear of the vehicle will be accepted in accordance with the applicable standard.

There was no explicit identification or monetary consideration of the expected features within the product.

Features which, in their nature and extent, slightly exceed normal use but do not constitute unacceptable damage, will be documented and indicated as signs of wear, if applicable.

Damage or defects that, according to the applicable standard, can no longer be attributed to normal use or wear and tear are listed under "Value Reducing Factors" in the product description.

Depending on the product specification, a monetary ID can be provided. If this takes place, the costs can be 100% d or pro rata depending on the vehicle's age and mileage.



Previous damages

No apparent prior damage that had been repaired could be found on the vehicle.



Figure 1: Diagonal front (left)



Figure 2: Diagonal front (right)



Figure 3: Diagonal rear (left)



Figure 4: Diagonal rear (right)



Figure 5: Interior - front

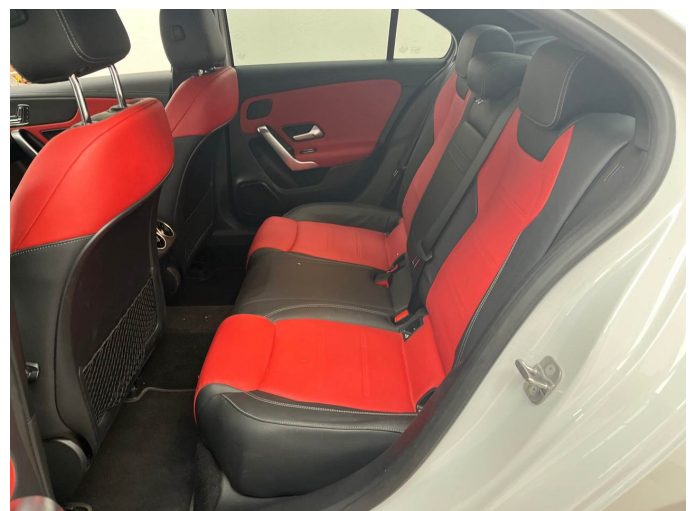


Figure 6: Interior - rear



Figure 7: Instrument cluster



Figure 8: Instrument panel



Figure 9: Interior 360° view



Figure 10: Cargo area



Figure 11: VIN



Figure 12: Mounted tyres



Figure 13: Documents



Figure 14: Documents



Figure 15: Additional tyres

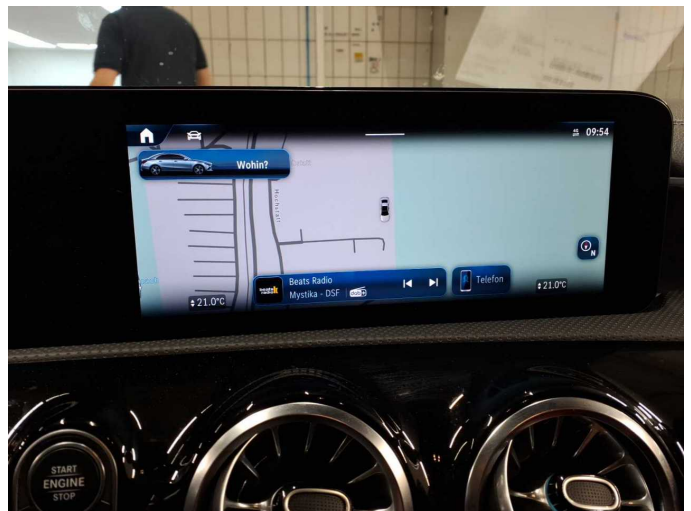


Figure 16: Navigation



Figure 17: Misc.



Figure 18: Misc.



Figure 19: Misc.



Figure 20: Misc.



Figure 21: Misc.



Figure 22: Misc.



Figure 23: Misc.



Figure 24: Misc.



Figure 25: Misc.



Figure 26: Misc.



Figure 27: Misc.



Figure 28: Misc.

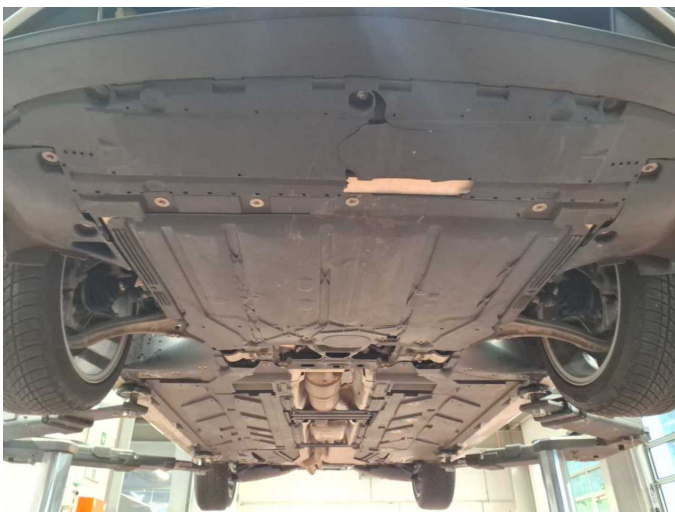
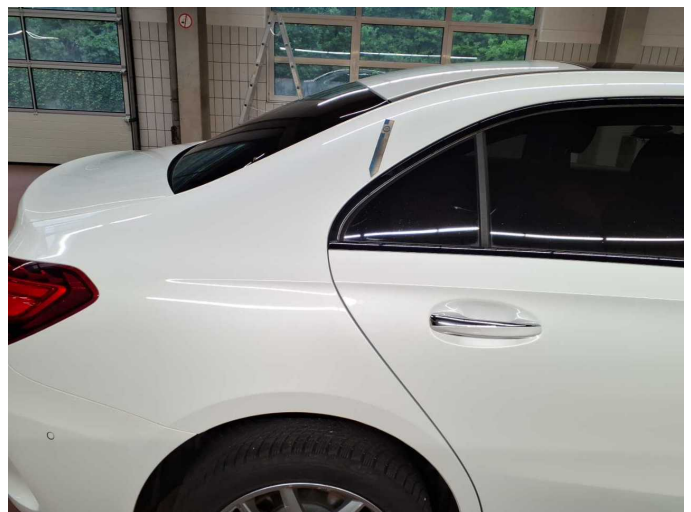


Figure 29: Misc.



Damage 1: Side panel - rear right side: Side panel - Scratch(es) - Smart repair



Damage 1: Side panel - rear right side: Side panel - Scratch(es) - Smart repair



Damage 2: Rear bumper: Rear bumper - Scratch(es) - Smart repair



Damage 2: Rear bumper: Rear bumper - Scratch(es) - Smart repair



Damage 3: Rear bumper: Spoiler (Rechts + Links) - Scratched - Replace



Damage 3: Rear bumper: Spoiler (Rechts + Links) - Scratched - Replace



Damage 3: Rear bumper: Spoiler (Rechts + Links) - Scratched - Replace



Damage 3: Rear bumper: Spoiler (Rechts + Links) - Scratched - Replace



Damage 3: Rear bumper: Spoiler (Rechts + Links) - Scratched - Replace



Damage 3: Rear bumper: Spoiler (Rechts + Links) - Scratched - Replace



Damage 4: Body: Underbody panelling - Broken / torn - Replace



Damage 4: Body: Underbody panelling - Broken / torn - Replace



Damage 5: Sill - right side: Trim - Scratched - Paint



Damage 5: Sill - right side: Trim - Scratched - Paint



Damage 5: Sill - right side: Trim - Scratched - Paint



Damage 5: Sill - right side: Trim - Scratched - Paint



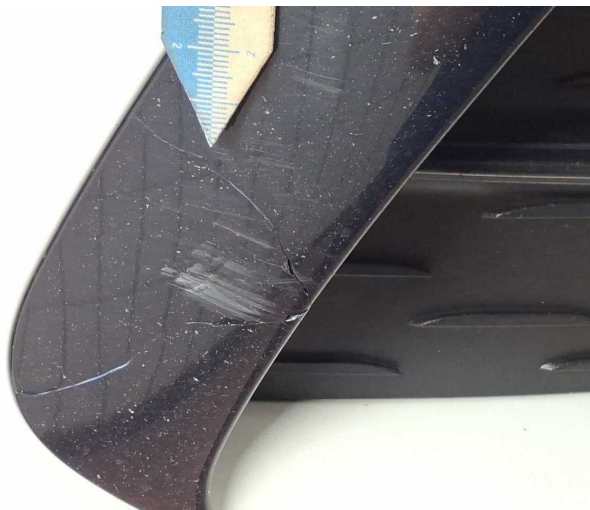
Damage 6: Front bumper: Front bumper (+ Blende rechts gebrochen erneuern) - Scratched - Repair and paint



Damage 6: Front bumper: Front bumper (+ Blende rechts gebrochen erneuern) - Scratched - Repair and paint



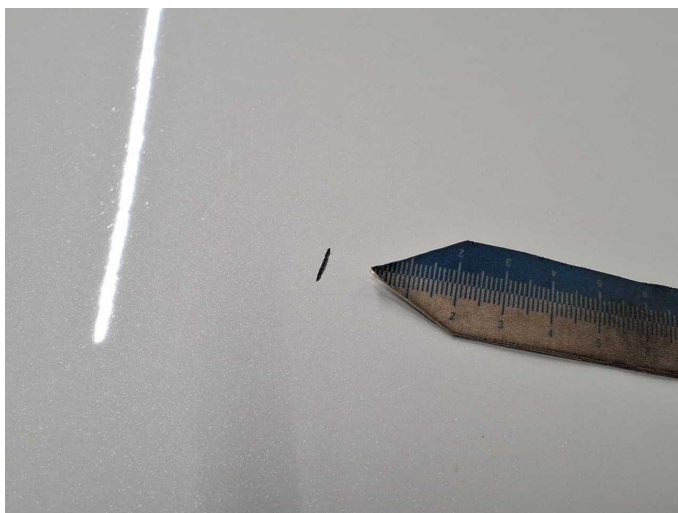
Damage 6: Front bumper: Front bumper (+ Blende rechts gebrochen erneuern) - Scratched - Repair and paint



Damage 6: Front bumper: Front bumper (+ Blende rechts gebrochen erneuern) - Scratched - Repair and paint



Damage 6: Front bumper: Front bumper (+ Blende rechts gebrochen erneuern) - Scratched - Repair and paint



Damage 6: Front bumper: Front bumper (+ Blende rechts gebrochen erneuern) - Scratched - Repair and paint



Wartungshistorie

(gemäß Auftraggeber Informationen)

Fahrgestellnummer: W1K3G4HB9PJ423224

Hersteller / Modell: MERCEDES-BENZ MB A 250 4Matic 8G-DCT AMG Line Advanced Plus

Datum	KM-Stand	Beschreibung
08.01.2026	87.834	Systemtest/Eigendiagnose
28.10.2025	79.329	Bremsscheiben hinten; Regelwartungsdienst
22.11.2024	52.253	Regelwartungsdienst
04.03.2024	25.192	Regelwartungsdienst