

## Expertise

Protocol number: 46329750  
Order No. / Reference: 26529903  
Inspection date: 6 Jul 2026

Manufacturer: Mercedes-Benz

Model: E 200 4Matic T 9G-TRONIC Avantgarde

VIN: W1K2132871B057578



### Vehicle details

#### Manufacturer / Type / Model / Equipment

Mercedes-Benz E 200 4Matic T 9G-TRONIC Avantgarde

**Vehicle Identification number** W1K2132871B057578

**Mileage (Read)** 87,968 km

**First registration** 23 Mar 2022

**Number of holders** 1

**Next periodical technical inspection** 04/2027

(Report on hand)

**Power / Engine displacement** 145 kw / 1,991 ccm

**Fuel type / Cylinder** Hybrid Petrol / E / 4

**Gearbox / Number of gears** Automatic / 9

**Type of drive** All-wheel drive

**Type of vehicle** Station wagon

**Colour / colour code** Graphitgrau Metallic

**Doors / Seats** 5 / 5

**Upholstery type** Cloth / leather combination

**Colour of upholstery** Black



## Vehicle details

<b>Maintenance booklet / proof</b>	digital proof / complete	<b>Next maintenance in</b>	-1,019 km
<b>Last service on / at</b>	04/2025 at 61,958 km		
<b>Key is / should be</b>	2 / 2	<b>FZG documents</b>	ZB#2 (B) was available (copy), ZB#1 (S) was not available.
		<b>Letter No.</b>	GF811789
<b>Previous damage / Accident</b>	None detectable	<b>Repainting</b>	None detectable
<b>Inspection conditions</b>	sufficient	<b>Lifting equipment / pit</b>	No
<b>Test drive</b>	Not performed	<b>Engine function test</b>	Performed
<b>Manufacturer key number/ type code number</b>	2222 / AEP 00326		
<b>Emission standard</b>	EURO6;WLTP;AP;PI/CI; M, N1 I	<b>fine dust sticker</b>	
<b>Permitted total weight</b>	2,540 kg	<b>Empty weight</b>	

## Tyres

### Mounted tyres

#	Tyre size	Type of tyre	Manufacturer	Tread depth
1)	245/45 R18 100V	Winter tires (with run-flat tires) on Light alloy	Goodyear	8mm / 8mm
2)	245/45 R18 100V	Winter tires (with run-flat tires) on Light alloy	Pirelli	6mm / 6mm

### Additional tyres

#	Tyre size	Type of tyre	Manufacturer	Tread depth
1)	245/45 R18 100Y	Summer tires (with run-flat tires) on Light alloy	Goodyear	6mm / 6mm
2)	245/45 R18 100Y	Summer tires (with run-flat tires) on Light alloy	Goodyear	6mm / 6mm

**Legend: Tread depth information for the left tire is listed first, for the right tire it is listed second on the axle in the direction of travel.**



## Equipment

### Standard equipment

- ADAPTIVE BRAKE with hill start assist, pre-filling and drying braking in wet conditions
- Airbag: Kneebag for driver
- Airbag: Windowbags left/right
- Premium ambient lighting with 64 colors and 3 color zones
- Anti-lock braking system (ABS)
- Traction control (ASR)
- Attention Assist
- Basic services
- On-board computer
- Tachometer
- DYNAMIC SELECT
- EASY-PACK tailgate
- Chassis: AGILITY CONTROL chassis with selective damping system and lowered suspension
- Velour floor mats
- Transmission: 9-speed automatic, 9G-TRONIC
- rear window wiper
- KEYLESS START
- Headrests 5-way adjustable for driver and front passenger, 4-way adjustable, and 2-way adjustable in the rear.
- Steering column mechanically adjustable in height and length
- Center console with on-the-fly storage compartment
- Navigation: Hard disk navigation
- Otto particulate filter
- Package: AVANTGARDE Exterior
- Upholstery: ARTICO leatherette/Norwich fabric
- Radio: Extended MBUX functions
- Radio accessories: Digital radio
- Tire pressure monitoring system
- Remote Services Plus
- Power steering
- Seats: Rear seat backrests foldable, 40/20/40 split
- Touchpad
- Electronic immobilizer
- Central locking
- Airbag for driver and front passenger
- Airbag: Automatic passenger airbag deactivation
- Airbag: Side airbag for driver and front passenger
- 4MATIC all-wheel drive
- AMG sports pedal assembly made of brushed stainless steel with rubber studs
- Foldable armrest for driver and front passenger
- Left and right exterior mirrors, heated and electrically adjustable, painted in body color
- Brake assist, active
- Third brake light
- EASY-PACK cargo cover including EASY-PACK safety net
- Electronic Stability Program (ESP)
- Chassis: Air suspension on the rear axle with level control
- Electric window regulator with comfort operation and anti-pinch protection, 4-way
- Heated rear window with timer
- Interior headliner in nevagrau fabric
- THERMATIC automatic climate control
- LED High Performance Headlights
- Steering wheel: Multifunction steering wheel in Nappa leather in a 3-spoke design
- Mercedes-Benz emergency call system
- Center console piano black finish
- Navigation accessories: Pre-installation for Live Traffic Information
- Package: Storage
- Package: Seating comfort
- PRE-SAFE system
- Radio: MBUX multimedia system
- Radio accessories: Communication module (LTE) for using Mercedes me connect services
- Windscreen wipers with rain sensor
- Seats: i-Size child seat attachment
- Power outlet: 12V socket in the cargo area
- High-visibility vest for drivers
- Green, heat-insulating glass all around
- Decorative elements: aluminum with longitudinal brushing, light finish



## Extra equipment

- Adaptive High Beam Assist (You activate the system with one operation and then benefit from the long beam range.)
- Towbar with ESP trailer stabilization (fully electrically foldable and retractable)
- Head-up display (lens and mirror system projects a virtual image into the driver's field of vision - full-color display that is easily readable even on sunny days and at night - depending on the equipment, display of, for example, navigation instructions, speed, speed limits or settings of cruise control or active distance assist DISTRONIC)
- Paint finish: Metallic
- Package: Business (without MBUX Augmented Reality) (MBUX High-End Package - Connectivity Package Navigation - Traffic Sign Assist - Smartphone Integration (Apple CarPlay and Android Auto) - Preparation for digital key handover - Widescreen Cockpit - Wireless charging system for mobile devices - Heated seats for driver and front passenger - Parking Package with reversing camera - Fuel tank with 66-liter capacity (916) (60l for diesel plug-in hybrids.)
- Package: Driving Assistance Package (Active Distance Assist DISTRONIC incl. Active Speed Limit Assist, Extended Automatic Restart on Highways, Route-Based Speed Adaptation with Traffic Jam Function (only when selecting Parking Packages), Active Steering Assist incl. Active Emergency Stop Assist with SOS Function, Emergency Lane Radio, Active Brake Assist incl. Turning and Intersection Radio, Traffic Jam Emergency Brake Radio, Evasive Steering Assist, Active Lane Keeping Assist, Active Blind Spot Assist incl. Exit Warning, Pedestrian Warning Radio, PRE-SAFE PLUS)
- Package: Parking package with reversing camera (The parking package with reversing camera makes it easier to find and select parking spaces, as well as to park and exit in parallel and perpendicular parking spaces or garages. The active parking assistant steers the vehicle into parking spaces, including speed control and automatic gear changes.)
- Radio accessories: Burmester surround sound system (13 high-performance speakers - 9-channel DSP amplifier with a total output of 590 W - Frontbass technology with woofers integrated into the body shell for powerful bass reproduction - Sound optimization for the front and rear seats - Noise cancellation (VNC) - Sound preset: Surround function to generate a virtual surround sound - Multi-channel format support for true surround sound)
- Wheels: Run-flat tires (In the event of a flat tire, run-flat tires do not need to be changed immediately. Continuing the journey is possible without significant loss of comfort – up to 80 km depending on the load, at a maximum speed of 80 km/h)
- Seats: Heated seats for driver and front passenger (selectable in three stages - Intelligent and comfortable: The seat heating switches off automatically)
- Power outlet: 2 USB ports in the rear with charging function
- Airbag: Sidebags in the rear, left and right
- AMG center console carbon
- Chassis: AGILITY CONTROL chassis with selective damping system (combines balanced driving comfort and high driving stability. Thanks to the passive damping system, you enjoy a confident driving experience on any road surface: rolling behavior, damping effect and stabilization are continuously and automatically adapted to the current surface.)
- THERMOTRONIC automatic climate control (3-zone automatic climate control: enables individually adjustable climate for driver and front passenger as well as rear seats - 3 climate styles (MEDIUM/ FOCUS/DIFFUSE) - Climate control settings via the infotainment system or the climate control unit in the center console - Automatic recirculation (with navigation) - Sensors for detecting, e.g., interior/ exterior temperature, ... - Fine dust activated carbon filter for filtering dust, soot and pollen - Dew point sensors, defroster nozzles under the windshield - Residual heat function)
- Package: KEYLESS-GO Comfort Package (vehicle key with KEYLESS-GO functionality - KEYLESS-GO access and drive authorization system - start/stop button - comfort opening and closing - door handles with chrome inlay - HANDS-FREE ACCESS - handle recess lighting - remote trunk lid closing)
- Package: Night for AVANTGARDE exterior (45.7 cm (18") light-alloy wheels in 5-twin-spoke design, painted high-gloss black and polished with 245/45 R 18 on 8 J x 18 ET 43 - front bumper with trim element in high-gloss black - beltline trim strip, window surround and trim strip in the rear bumper in high-gloss black - exterior mirror housings in high-gloss black - roof rails in black - heat-insulating dark tinted glass from the B-pillar)
- Package: Sun protection package (mechanical sunshade in rear doors left and right - extendable sun visors with make-up mirror for driver and front passenger)
- Package: Mirrors (both exterior mirrors electrically foldable (button in the driver's door control panel) - automatic lowering of the passenger-side mirror glass to parking position when reverse gear is engaged - interior mirror and driver's side exterior mirror automatically dimming continuously - ambient lighting of the exterior mirror to illuminate the entry area)
- Wheels: 45.7 cm (18") light alloy wheels in a 5-twin-spoke design, painted in high-gloss black (gloss-turned - 8 J x 18 ET 43, tire size 245/45 R 18)
- Servo closing (The convenient servo closing feature ensures a smooth and virtually silent closing process. After an initial engagement, the doors are automatically pulled into the lock by servo motors.)



- Glazing: Heat-insulating dark tinted glass all around from the B-pillar (the use of heat-insulating dark tinted glass for the rear side windows and rear window protects rear passengers from prying eyes and direct sunlight - the dark tint also emphasizes the sportiness of the vehicle)
- Auxiliary heater (including auxiliary ventilation in summer) - The auxiliary heater ensures ice-free visibility and pleasant interior temperatures all year round from the start of the journey and can also be controlled via smartphone. This provides a noticeable increase in comfort and safety, especially when a garage is not available.
- Type designation removed from trunk lid

## Brief expert findings

Documents submitted	At the time of the inspection, the vehicle registration certificate Part 2 (title) was available, but the vehicle registration certificate Part 1 (document) was not. (Copy)
VIN comparison	The vehicle identification number (VIN) was read from the vehicle and its conformity with the submitted documents was confirmed by the undersigned during the inspection.
Inspection	The inspection conditions were sufficient for the assessment of the vehicle. No lifting equipment or pit was available for inspecting the vehicle. Therefore, inspection of the vehicle's underside was only possible to a limited extent.
Test drive	No test drive/shunting maneuver was carried out during the inspection of the vehicle.
Engine function test	An engine test run was performed.

## Value reducing factors

No.	Component group	Description
1	Wing mirror - right side	Cap - Scratch(es) - Smart repair
2	Wheel / tyres	Alloy rim - front right side - Scratch(es) - Loss in value
3	Front bumper	Front bumper - Scratch(es) - Smart repair
4	Trim / covers	Brightware / decorative strip - Scratch(es) - Smart repair
5	Rear bumper	Rear bumper - Scratch(es) - Smart repair
6	Wheel / tyres	Alloy rim - rear right side - Scratched - Loss in value
7	Misc.	Inspection / maintenance - Due - Replace

## Wear and tear

No.	Component group	Description
1	Side panel - rear left side	Side panel - dent(s) - Smart repair

The vehicle shows signs of wear and tear commensurate with its age and use.

## Order/Scope of Order

An order was placed to prepare a sales report for the described vehicle. This report includes the following:

- Description of key vehicle information
- Documentation of equipment features  
(*Delivery by third-party service providers*)
- Documentation of damage, defects, missing parts
- Documentation of prior damage, unrepaired prior damage, repainting
- A brief visual or functional inspection of the equipment details, if possible.  
(*Functional testing of driver assistance systems is not included in the scope of services!*)
- a photographic documentation of the vehicle



## Basis for the order

This product is based on the guidelines for vehicle returns and valuations published by Alphabet Fleet GmbH. The expert makes the specific findings in each individual case objectively, within the framework of the prescribed standards, based on their own expertise.

The vehicle inspection takes place in a fully assembled, unassembled state.

Damage or defects that can only be detected during disassembly/diagnostic work or through further investigation remain within the realm of prognostic risk. An increased risk exists due to concealed defects caused by fraudulent misrepresentation and which were not identifiable by the expert.

Damage or defects resulting from normal use or wear and tear of the vehicle will be accepted in accordance with the applicable standard.

There was no explicit identification or monetary consideration of the expected features within the product.

Features which, in their nature and extent, slightly exceed normal use but do not constitute unacceptable damage, will be documented and indicated as signs of wear, if applicable.

Damage or defects that, according to the applicable standard, can no longer be attributed to normal use or wear and tear are listed under "Value Reducing Factors" in the product description.

Depending on the product specification, a monetary ID can be provided. If this takes place, the costs can be 100% d or pro rata depending on the vehicle's age and mileage.

## Previous damages

No apparent prior damage that had been repaired could be found on the vehicle.

## Comments

- Die Unterbodenbesichtigung war nur ebenerdig & eingeschränkt möglich. Mehrkosten möglich.



Figure 1: Diagonal front (left)



Figure 2: Diagonal front (right)



Figure 3: Diagonal rear (left)



Figure 4: Diagonal rear (right)



Figure 5: Interior - front



Figure 6: Interior - rear



Figure 7: Instrument cluster



Figure 8: Instrument panel



Figure 9: Interior 360° view



Figure 10: Cargo area



Figure 11: VIN



Figure 12: Mounted tyres

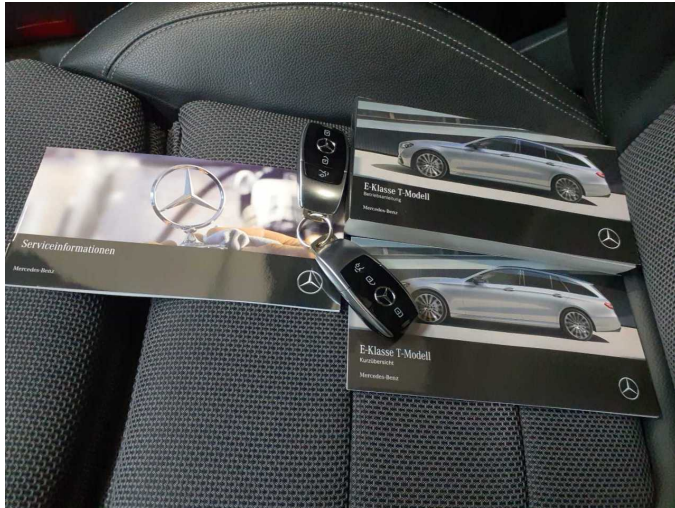


Figure 13: Documents



Figure 14: Documents



Figure 15: Documents



Figure 16: Additional tyres



Figure 17: Navigation



Figure 18: Misc.



Figure 19: Misc.



Figure 20: Misc.

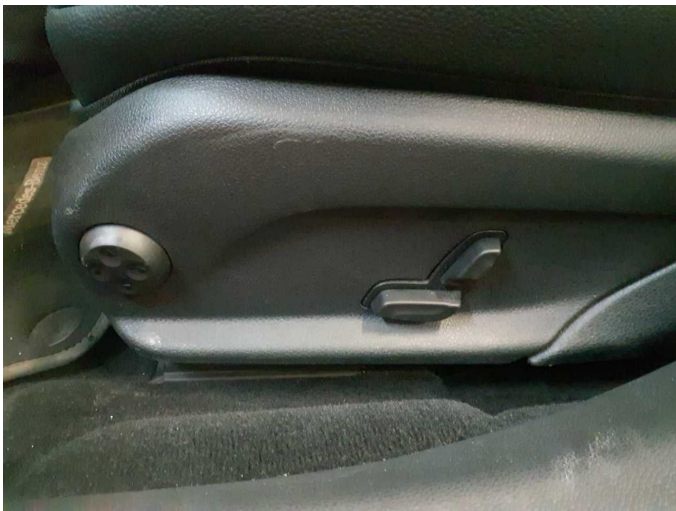


Figure 21: Misc.



Figure 22: Misc.



Figure 23: Misc.



Figure 24: Misc.

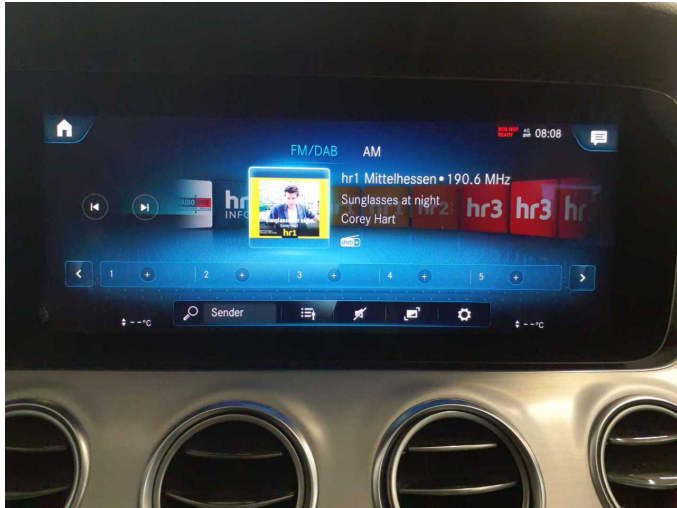


Figure 25: Misc.



Figure 26: Misc.



Figure 27: Misc.

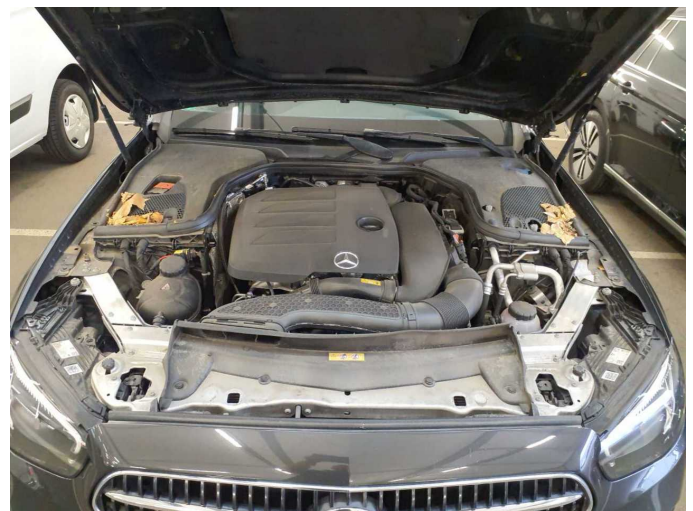


Figure 28: Misc.



Figure 29: Misc.



Figure 30: Misc.

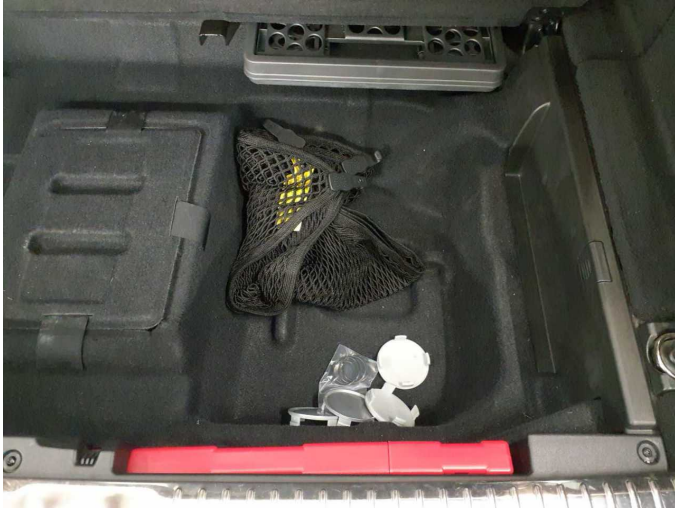


Figure 31: Misc.



Figure 32: Misc.



Damage 1: Wing mirror - right side: Cap - Scratch(es) - Smart repair



Damage 1: Wing mirror - right side: Cap - Scratch(es) - Smart repair



Damage 2: Wheel / tyres: Alloy rim - front right side - Scratch(es) - Loss in value



Damage 2: Wheel / tyres: Alloy rim - front right side - Scratch(es) - Loss in value



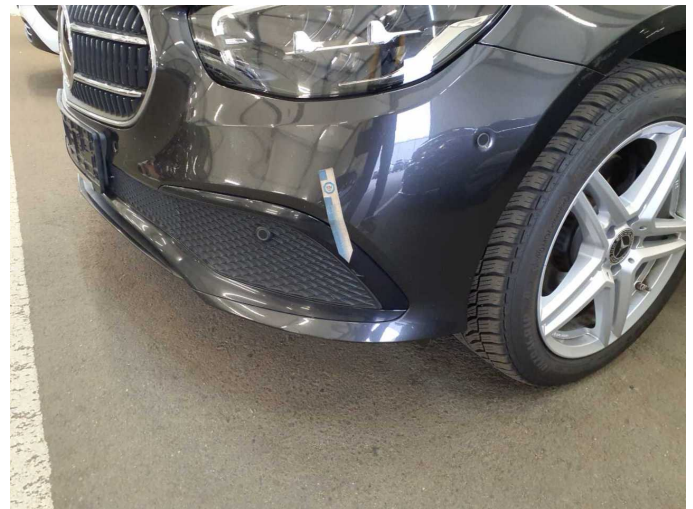
**Damage 2:** Wheel / tyres: Alloy rim - front right side - Scratch(es) - Loss in value



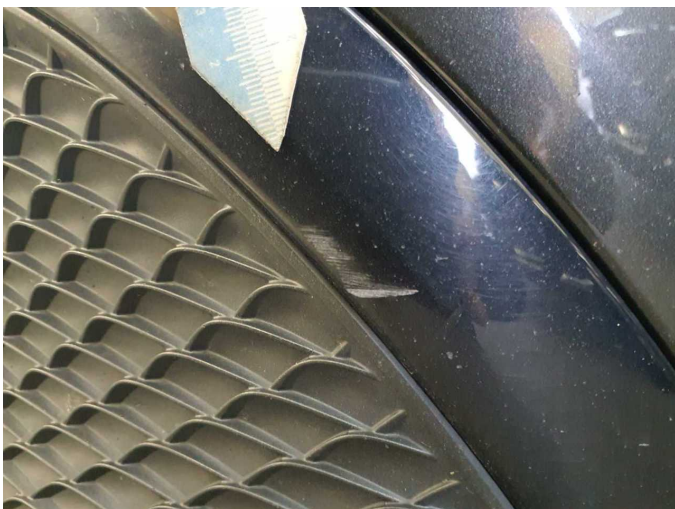
**Damage 3:** Front bumper: Front bumper - Scratch(es) - Smart repair



**Damage 3:** Front bumper: Front bumper - Scratch(es) - Smart repair



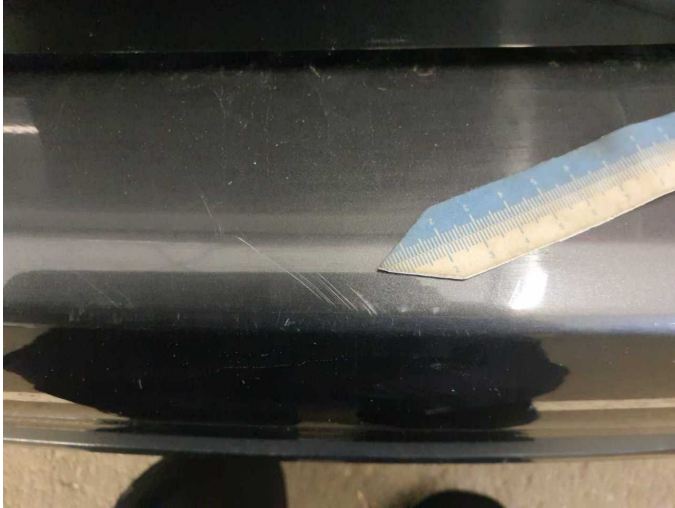
**Damage 4:** Trim / covers: Brightware / decorative strip - Scratch(es) - Smart repair



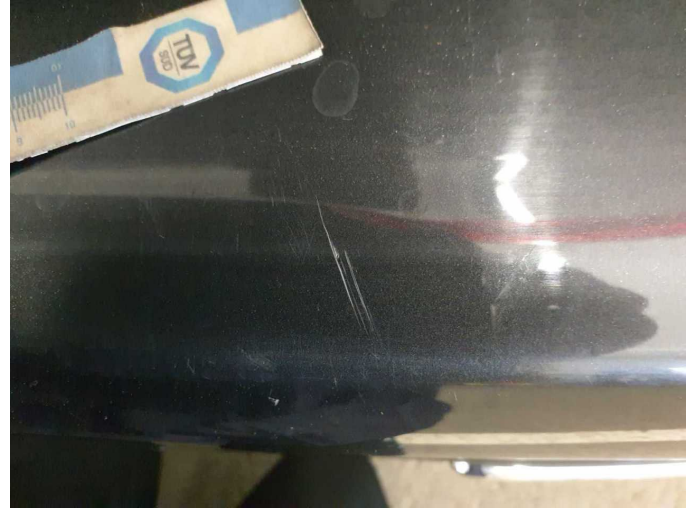
**Damage 4:** Trim / covers: Brightware / decorative strip - Scratch(es) - Smart repair



**Damage 5:** Rear bumper: Rear bumper - Scratch(es) - Smart repair



**Damage 5:** Rear bumper: Rear bumper - Scratch(es) - Smart repair



**Damage 5:** Rear bumper: Rear bumper - Scratch(es) - Smart repair



**Damage 5:** Rear bumper: Rear bumper - Scratch(es) - Smart repair



**Damage 6:** Wheel / tyres: Alloy rim - rear right side - Scratched - Loss in value



**Damage 6:** Wheel / tyres: Alloy rim - rear right side - Scratched - Loss in value



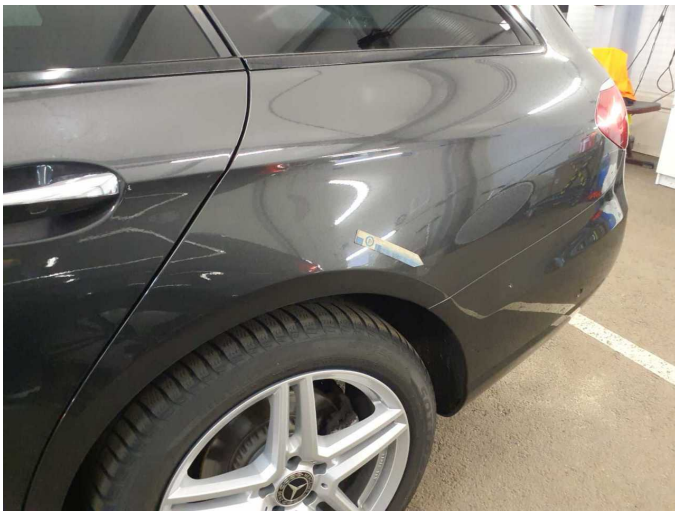
**Damage 6:** Wheel / tyres: Alloy rim - rear right side - Scratched - Loss in value



**Damage 6:** Wheel / tyres: Alloy rim - rear right side - Scratched - Loss in value



**Damage 7:** Misc.: Inspection / maintenance - Due - Replace



**Wear and tear 1:** Side panel - rear left side: Side panel - dent(s) - Smart repair



**Wear and tear 1:** Side panel - rear left side: Side panel - dent(s) - Smart repair



**Wear and tear 1:** Side panel - rear left side: Side panel - dent(s) - Smart repair



# Wartungshistorie

(gemäß Auftraggeber Informationen)

Fahrgestellnummer: W1K2132871B057578

Hersteller / Modell: MERCEDES-BENZ MERCEDES-BENZ E 200 4Matic T 9G-TRONIC Avantgarde

Datum	KM-Stand	Beschreibung
02.04.2025	61.958	AU; Bremsscheiben vorne; Regelwartungsdienst
17.04.2024	40.593	Bremsklötze hinten; Regelwartungsdienst
31.03.2023	18.280	Regelwartungsdienst