

## Expertise

Protocol number: 46134684  
Order No. / Reference: 26349239  
Inspection date: 28 May 2026

Manufacturer: Ford

Model: Mondeo Turnier 2.0 EcoBlue Aut. ST-Line

VIN: WF0FXXWPCFMJ44613



### Vehicle details

#### Manufacturer / Type / Model / Equipment

Ford Mondeo Turnier 2.0 EcoBlue Aut. ST-Line

**Vehicle Identification number** WF0FXXWPCFMJ44613

**Mileage (Read)** 162,613 km

**First registration** 17 Mar 2021

**Number of holders** 1

**Power / Engine displacement** 140 kw / 1,995 ccm

**Fuel type / Cylinder** Diesel / 4

**Gearbox / Number of gears** Automatic / 8

**Type of drive** Front drive

**Type of vehicle** Station wagon

**Colour / colour code** Magnetic-Grau (Metallic)

**Doors / Seats** 5 / 5

**Upholstery type** Cloth / leather combination

**Colour of upholstery** Anthracite-Black

**Vehicle with smoke odor** no



## Vehicle details

<b>Maintenance booklet / proof</b>	digital proof / complete	<b>Next maintenance in</b>	44 %
<b>Last service on / at</b>	12/2025 at 145,872 km		
<b>Key is / should be</b>	2 / 2	<b>FZG documents</b>	ZB#2 (B) was available (copy), ZB#1 (S) was not available.
		<b>Letter No.</b>	FZ462526
<b>Previous damage / Accident</b>	Detectable	<b>Repainting</b>	Detectable
<b>Inspection conditions</b>	sufficient	<b>Lifting equipment / pit</b>	yes
<b>Test drive</b>	Not performed	<b>Engine function test</b>	Performed
<b>Manufacturer key number/ type code number</b>	8566 / BRJ 00022		
<b>Emission standard</b>	EURO6;WLTP;AP;PI/CI; M, N1 I	<b>fine dust sticker</b>	
<b>Permitted total weight</b>	2,330 kg	<b>Empty weight</b>	

## Tyres

**Mounted tyres**

#	Tyre size	Type of tyre	Manufacturer	Tread depth
1)	215/55 R17 98H	Winter tyres on Light alloy	Pirelli	5mm / 5mm
2)	215/55 R17 98H	Winter tyres on Light alloy	Pirelli	6mm / 6mm

**Additional tyres**

#	Tyre size	Type of tyre	Manufacturer	Tread depth
1)	235/45 R18 98Y	Summer tyres on Light alloy	Pirelli	6mm / 6mm
2)	235/45 R18 98Y	Summer tyres on Light alloy	Pirelli	6mm / 6mm

**Replacement**

Typ	Tyre size	Type of tyre	Manufacturer	Tread depth
	Tirefit	Expiration date 01/2025		

**Legend: Tread depth information for the left tire is listed first, for the right tire it is listed second on the axle in the direction of travel.**

TÜV SÜD Auto Partner GmbH  
Gutenbergstraße 13  
70771 Leinfelden-Echterdingen

Inspection location  
Mosolf SE & Co.KG  
Faberweg 25  
73230 Kirchheim unter Teck



## Equipment



## Standard equipment

- Ambient lighting in the front, including door storage compartment, front door handle and footwell lighting.
- Exterior mirrors in body color, driver and passenger side, electrically adjustable and heated (with integrated turn signals and ambient lighting and electrically foldable - additionally with memory function, automatically dimming on the driver's side and with automatic tilt towards the sidewalk when reversing)
- Tires: Tire repair kit
- Hill start assist
- third brake light
- Brake calipers, painted red
- headliner, black
- Roof rails, black
- Diesel particulate filter (DPF)
- Dual exhaust system
- Tachometer
- Electronic Safety and Stability Program (ESP) (with traction control (ASR) and safety brake assist (EBA))
- Lane Keeping Assist including Lane Keeping Assist and Driver Alert (including High Beam Assist and Road Edge Detection)
- High Beam Assist
- Electronic parking brake
- Ford Power Start function (with Ford Key Free system - keyless locking/unlocking - second passive vehicle key)
- FordPass Connect including eCall, live traffic information and Wi-Fi hotspot (information about the current status or location of the vehicle as well as control of selected vehicle functions via smartphone with the FordPass app - eCall emergency call system to send an emergency call in the event of an accident or when manually activated - Real-time traffic information - Wi-Fi hotspot (up to 4G/LTE7, for up to 10 mobile devices))
- Back window, heater
- Rear spoiler
- Interior mirror automatically dimming
- Intelligent Protection System (IPS): - Front airbag for driver and front passenger - Knee airbag for driver - Head and shoulder airbags, front and rear - Side airbags for driver and front passenger - Seat belt tensioners and force limiters, front - 3-point seat belts on all seats, height-adjustable at the front)
- Rear headrests (3), height adjustable
- Steering wheel: Multifunction leather steering wheel
- Steering column, adjustable (adjustable in height and reach)
- Front center console with padded armrests (storage compartment under the armrest - 2 cup holders)
- Navigation: Ford Navigation including Ford SYNC 3 with AppLink, 8" touchscreen (20.3 cm screen) with DAB/DAB+ (8" touchscreen (20.3 cm screen diagonal) - 8 speakers - steering wheel controls - Bluetooth hands-free system and audio streaming - 2 USB ports - voice control for audio and telephone - SMS text-to-speech function - road map for Europe)
- Anti-lock braking system (ABS) with electronic brake force distribution (EBD)
- Attachment points for safety partition grilles (attachment points 1st row of seats)
- Attachment points for safety partition grilles (attachment points 2nd row of seats)
- Tires: 8 J x 18 alloy wheels with 235/45 R 18 tires (in 5-spoke Y-design, in rock metallic, diamond-turned finish)
- Tires: Tire pressure monitoring system (TPMS)
- Body styling kit (front apron in special design - rear apron with glossy black diffuser (not in conjunction with trailer hitch) - fog light surrounds painted glossy black - radiator grille (upper and lower part) in special honeycomb design, painted glossy black - additionally with LED design daytime running lights in the fog lights (not in conjunction with adaptive LED headlights))
- Front door sill trim "ST-Line"
- Driver information system - 25.4 cm color display (digital/analog) (on-board computer with fuel consumption and mileage information)
- Chassis: Sport-tuned
- Electric front and rear windows (with anti-pinch protection and automatic opening and closing function)
- Ford Easy Fuel (The Ford Easy Fuel convenience refueling system eliminates the need for a separate internal fuel filler cap and prevents misfueling by detecting the size difference between petrol and diesel nozzles. The filler neck only opens when the correct fuel is used.)
- Heated windshield
- luggage compartment cover
- Luggage compartment lighting
- Cruise control system with intelligent speed limiter
- Transmission: 8-speed automatic transmission (with manual shift option)
- rear window wiper
- Interior lighting with delay function (with reading lights, front and rear)
- Isofix mounting (including top tether anchor points on the outer seats of the 2nd row)
- Electric child safety lock
- Air conditioning with automatic temperature control (separately adjustable for driver and passenger side (2-zone automatic climate control))
- Front headrests, 4-way height and tilt adjustable
- Steering wheel: Sports steering wheel (perforated) with red decorative stitching
- Reading lights front and rear
- MyKey key system (individually programmable second key) (setting options include: limiting the maximum speed and radio volume, speed warning, safety assistance systems cannot be deactivated, locking of ESP deactivation, extended warning system for unfastened seat belts)
- Fog light



- Pedal assembly with aluminum pads
- Rear seat backrest, foldable, 60:40 split
- Steering wheel paddle shifters for automatic transmissions
- Windscreen wipers with rain sensor
- Headlight dipped beam with switch-off delay including "greeting function"
- Black border instead of chrome decorative border
- Side skirts painted in car color
- Electromechanical speed-dependent power steering
- Seats: Map pocket on the driver's seat backrest
- Start-stop system
- 12-volt socket in the front interior
- Carpet floor mats front and rear
- Lashing eyes in the luggage compartment floor
- Immobiliser
- Central locking (including selective locking (one door/all doors), remote control and luggage compartment remote release)

- Emergency brake light (pulsating illumination of the brake lights during hard braking)
- Front and rear parking pilot system
- Upholstery: Leather-fabric upholstery in suede look with red decorative stitching (seat center panels and inner side bolsters with leather inserts - driver's seat, 10-way electrically adjustable, with memory function - passenger seat, 10-way electrically adjustable - electric lumbar support)
- Headlight assistant with day/night sensor
- Side windows from the 2nd row of seats and rear window, dark tinted.
- Seats: Map pocket on the back of the front passenger seat
- Seats: Front seats can be heated individually and variably.
- 12-volt power outlet in the luggage compartment
- Front bumper painted in body color
- Traffic sign recognition system
- Warning system for unfastened seat belts in the front and second row of seats
- Cigarette lighter (and ashtray in the center console)

### Extra equipment

- Detachable towbar (ESP trailer stabilization - continuous power supply - switched power supply - hill start assist)
- Package: Winter (Heated windscreen - Heated leather steering wheel - 230-volt socket in center console (not in conjunction with hybrid engine) - Individually and variably heated front seats - Variably heated rear bench seat)
- Panoramic sliding sunroof, electric (with heat protection and anti-pinch protection including sunshades in the rear side doors and electric sun visor)
- Safety partition net behind the 2nd row of seats for the luggage compartment

- Paint finish: Metallic
- Package: Business 2 (Automatic) (Sony Navigation including Ford SYNC 3 with AppLink and 8" (20.3 cm) touchscreen with Premium Sound System, 12 Sony speakers and DAB/DAB+ radio, reversing camera, parking assistant with parallel and perpendicular parking sensors including front and rear parking sensors, blind spot information system including cross traffic alert and dynamic distance detection, power tailgate, adaptive LED headlights, adaptive LED headlights with automatic headlight range control, LED daytime running lights, adaptive cruise control, traffic jam assist with stop & go function)

### Brief expert findings

Documents submitted	At the time of the inspection, the vehicle registration certificate Part 2 (title) was available, but the vehicle registration certificate Part 1 (document) was not. (Copy)
VIN comparison	The vehicle identification number (VIN) was read from the vehicle and its conformity with the submitted documents was confirmed by the undersigned during the inspection.
Inspection	The inspection conditions were sufficient for the assessment of the vehicle. Lifting equipment and/or a pit were available for examining the vehicle.
Test drive	No test drive/shunting maneuver was carried out during the inspection of the vehicle.
Engine function test	An engine test run was performed.



## Value reducing factors

No.	Component group	Description
1	Equipment	Tirefit filler - Expired - Replace
2	Trim / covers	Boot lid - interior trim - Scratch(es) - Loss in value
3	2nd wheel set	1 alloy rim - Scratch(es) - Loss in value
4	Sill - right side	Trim - Deformed - Loss in value
5	Body	Underbody panelling - Broken / torn - Replace
6	Door - front left side	Door (+ Kratzer) - Dent / paintcoat damage - Paint
7	Door - front right side	Door - Unprofessionally repaired - Paint
8	Front bumper	Front bumper - Scratched - Paint
9	Rear bumper	Rear bumper - Scratch(es) - Paint

## Wear and tear

No.	Component group	Description
1	Body	Body - Scratch(es) - No deduction
2	Vehicle glazing	Windscreen - Stone chips - No deduction
3	Bonnet	Bonnet - Stone chips - No deduction
4	Body	Underbody - Corrosion - No deduction
5	Wheel / tyres	Alloy rim - front left side (Kein Teil der Ausstattung) - Scratched - No deduction

The vehicle shows signs of wear and tear commensurate with its age and use.

## Missing parts

### Description

Interior - Separation net

## Previous damages

No.	Previous damage	Extent of damage (Net)
1	Side - left, Provided by user / customer, from 25 Jun 2021	526,22 €
2	Side right, Professionally repaired, Invoice of repair done Non-existent, from 7 Apr 2021	758,70 €
3	Side - left, Provided by user / customer, from 14 May 2024	1.188,92 €
4	Rear, Side - left, Professionally repaired, Invoice of repair done Non-existent, from 30 May 2022	2.779,17 €

## Repainting

### No. Repainting

- 1 Roof rail - left side, Side panel - rear left side, Door - rear right side, Professionally carried out, Invoice of repair done Non-existent
- 2 Door - front right side, Unprofessionally carried out, Invoice of repair done Non-existent

## Paint coat thickness measurement

Roof rail - left side	181 µm	Side panel - rear left side	189 µm
Door - rear right side	168 µm	Door - front right side	175 µm



## Order/Scope of Order

An order was placed to prepare a sales report for the described vehicle. This report includes the following:

- Description of key vehicle information
- Documentation of equipment features  
*(Delivery by third-party service providers)*
- Documentation of damage, defects, missing parts
- Documentation of prior damage, unrepaired prior damage, repainting
- A brief visual or functional inspection of the equipment details, if possible.  
*(Functional testing of driver assistance systems is not included in the scope of services!)*
- a photographic documentation of the vehicle

## Basis for the order

This product is based on the guidelines for vehicle returns and valuations published by Alphabet Fleet GmbH. The expert makes the specific findings in each individual case objectively, within the framework of the prescribed standards, based on their own expertise.

The vehicle inspection takes place in a fully assembled, unassembled state.

Damage or defects that can only be detected during disassembly/diagnostic work or through further investigation remain within the realm of prognostic risk. An increased risk exists due to concealed defects caused by fraudulent misrepresentation and which were not identifiable by the expert.

Damage or defects resulting from normal use or wear and tear of the vehicle will be accepted in accordance with the applicable standard.

There was no explicit identification or monetary consideration of the expected features within the product.

Features which, in their nature and extent, slightly exceed normal use but do not constitute unacceptable damage, will be documented and indicated as signs of wear, if applicable.

Damage or defects that, according to the applicable standard, can no longer be attributed to normal use or wear and tear are listed under "Value Reducing Factors" in the product description.

Depending on the product specification, a monetary ID can be provided. If this takes place, the costs can be 100% d or pro rata depending on the vehicle's age and mileage.

## Previous damages

Professionally repaired previous damages were found at the vehicle.

## Comments

Der Winterradsatz ist kein Bestand der Ausstattung.



Figure 1: Diagonal front (left)



Figure 2: Diagonal front (right)



Figure 3: Diagonal rear (left)



Figure 4: Diagonal rear (right)



Figure 5: Interior - front



Figure 6: Interior - rear



Figure 7: Instrument cluster



Figure 8: Instrument panel



Figure 9: Interior 360° view



Figure 10: VIN



Figure 11: Mounted tyres



Figure 12: Documents

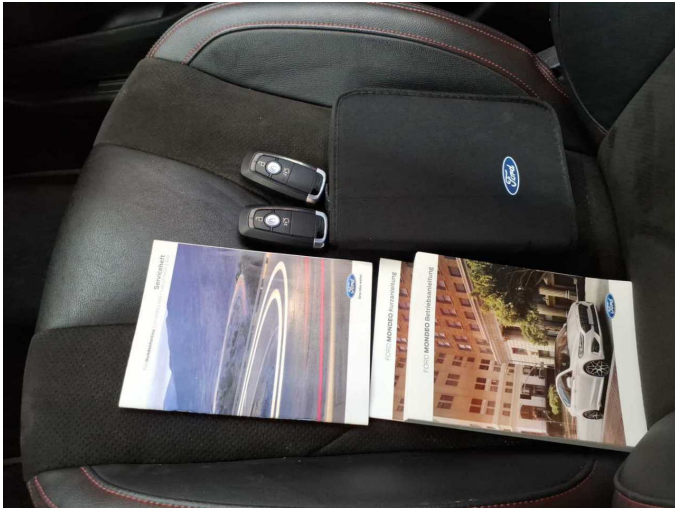


Figure 13: Documents

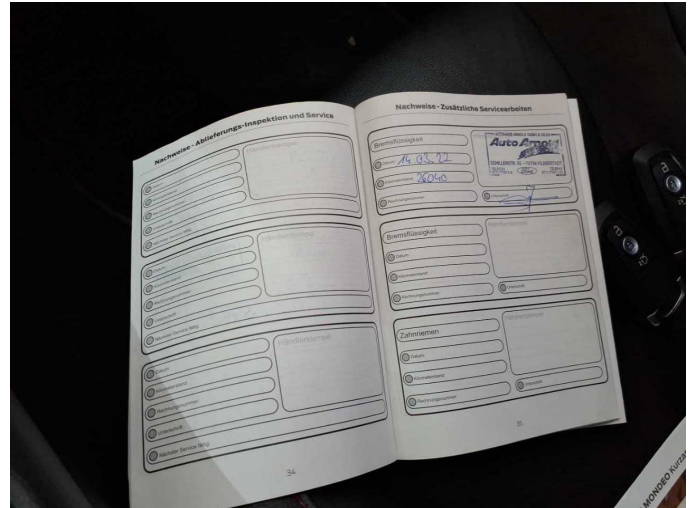


Figure 14: Documents



Figure 15: Additional tyres



Figure 16: Misc.



Figure 17: Misc.



Figure 18: Misc.



Figure 19: Misc.



Figure 20: Misc.

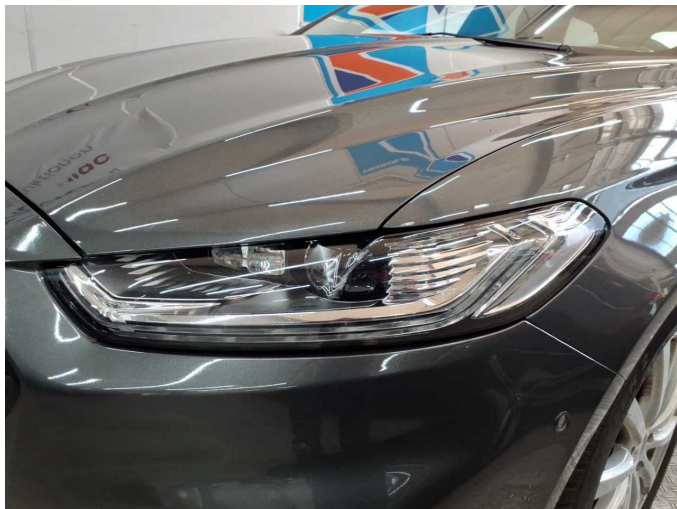


Figure 21: Misc.



Figure 22: Misc.



Figure 23: Misc.



Figure 24: Misc.



Figure 25: Misc.



Figure 26: Misc.



Figure 27: Misc.



Figure 28: Misc.

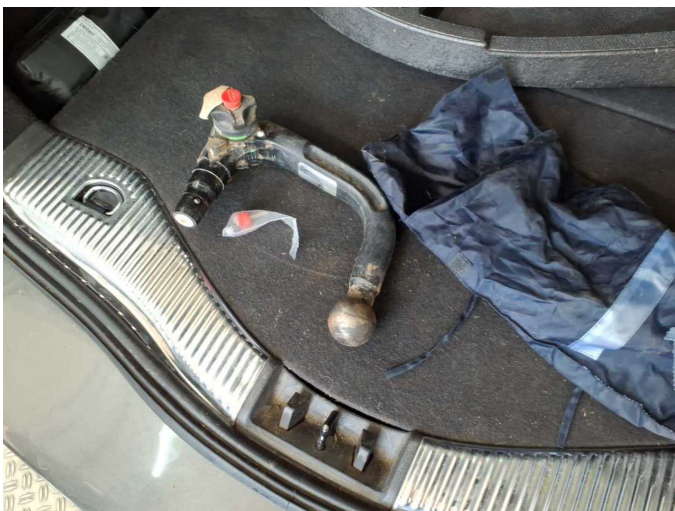


Figure 29: Misc.

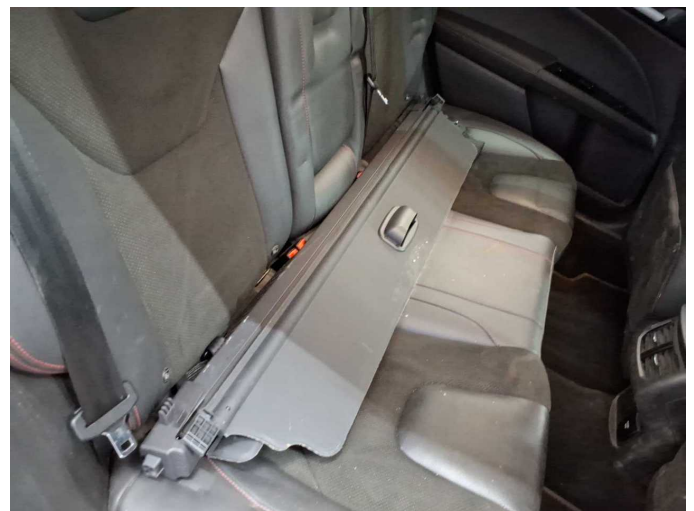


Figure 30: Misc.



Figure 31: Misc.



Figure 32: Misc.



Figure 33: Misc.

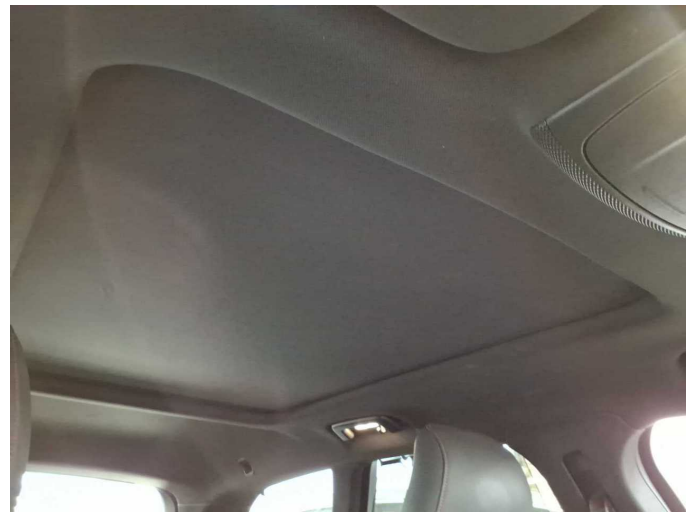


Figure 34: Misc.

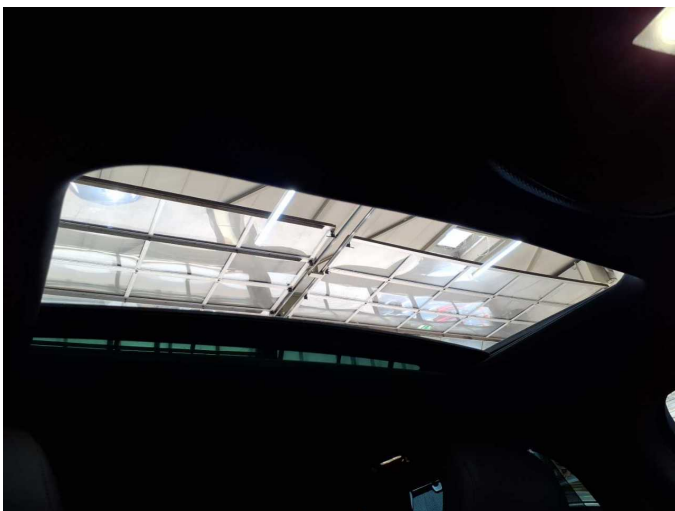


Figure 35: Misc.

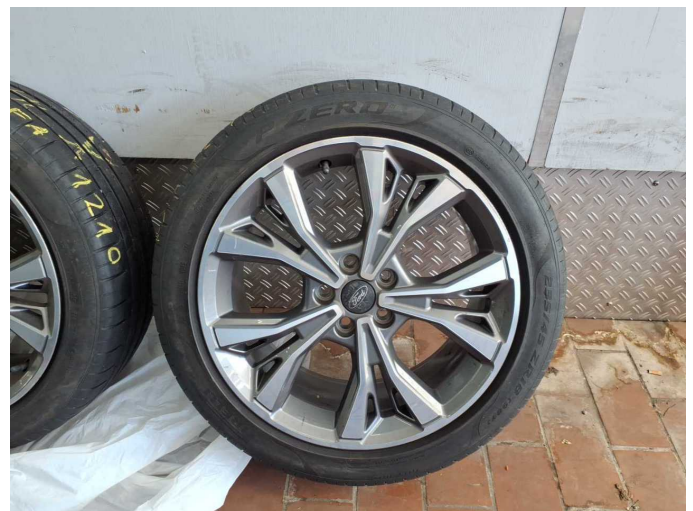


Figure 36: Misc.



Figure 37: Misc.



Damage 1: Equipment: Tirefit filler - Expired - Replace



Damage 2: Trim / covers: Boot lid - interior trim - Scratch(es) - Loss in value



Damage 2: Trim / covers: Boot lid - interior trim - Scratch(es) - Loss in value



Damage 2: Trim / covers: Boot lid - interior trim - Scratch(es) - Loss in value



Damage 3: 2nd wheel set: 1 alloy rim - Scratch(es) - Loss in value



**Damage 3:** 2nd wheel set: 1 alloy rim - Scratch(es) - Loss in value



**Damage 3:** 2nd wheel set: 1 alloy rim - Scratch(es) - Loss in value



**Damage 4:** Sill - right side: Trim - Deformed - Loss in value



**Damage 4:** Sill - right side: Trim - Deformed - Loss in value



**Damage 4:** Sill - right side: Trim - Deformed - Loss in value



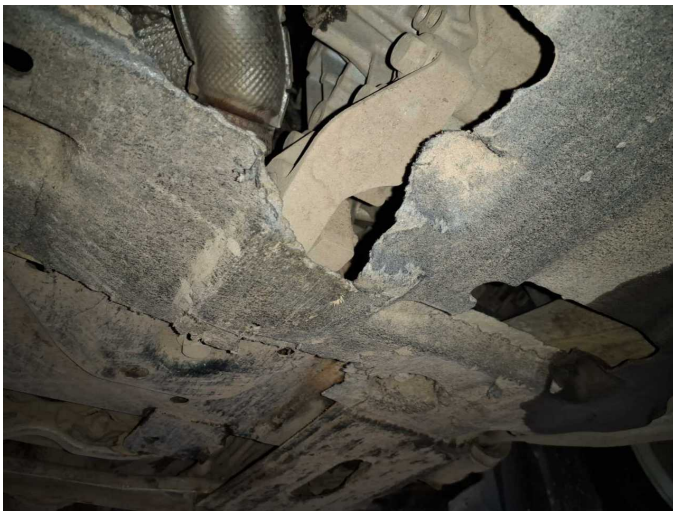
**Damage 4:** Sill - right side: Trim - Deformed - Loss in value



**Damage 4:** Sill - right side: Trim - Deformed - Loss in value



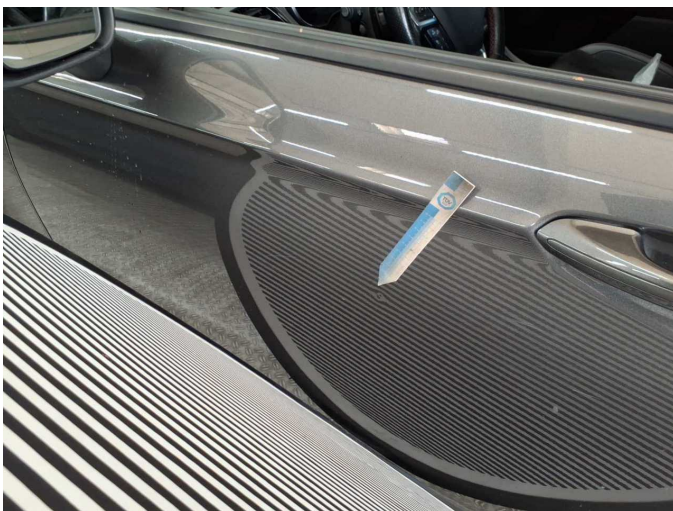
**Damage 5:** Body: Underbody panelling - Broken / torn - Replace



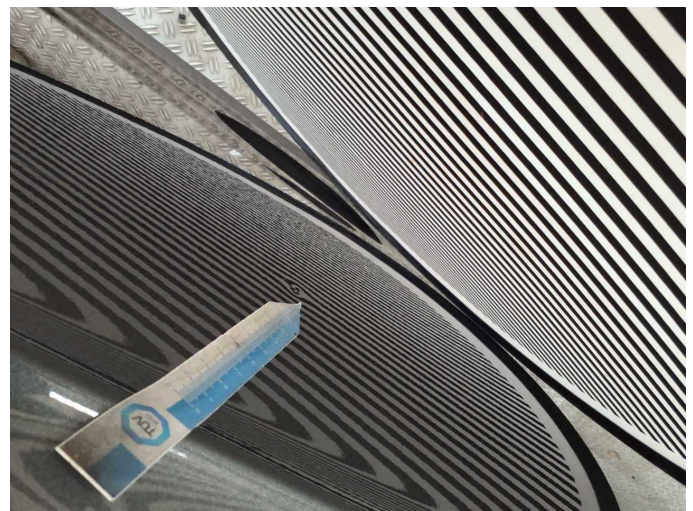
**Damage 5:** Body: Underbody panelling - Broken / torn - Replace



**Damage 5:** Body: Underbody panelling - Broken / torn - Replace



**Damage 6:** Door - front left side: Door (+ Kratzer) - Dent / paintcoat damage - Paint



**Damage 6:** Door - front left side: Door (+ Kratzer) - Dent / paintcoat damage - Paint



**Damage 6:** Door - front left side: Door (+ Kratzer) - Dent / paintcoat damage - Paint



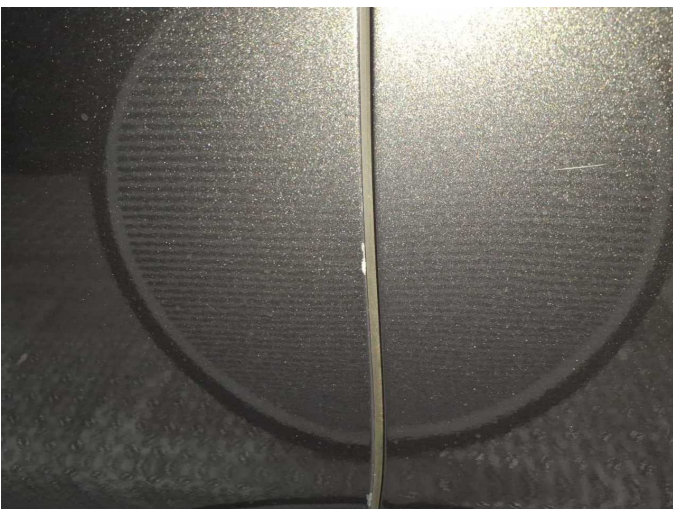
**Damage 6:** Door - front left side: Door (+ Kratzer) - Dent / paintcoat damage - Paint



**Damage 6:** Door - front left side: Door (+ Kratzer) - Dent / paintcoat damage - Paint



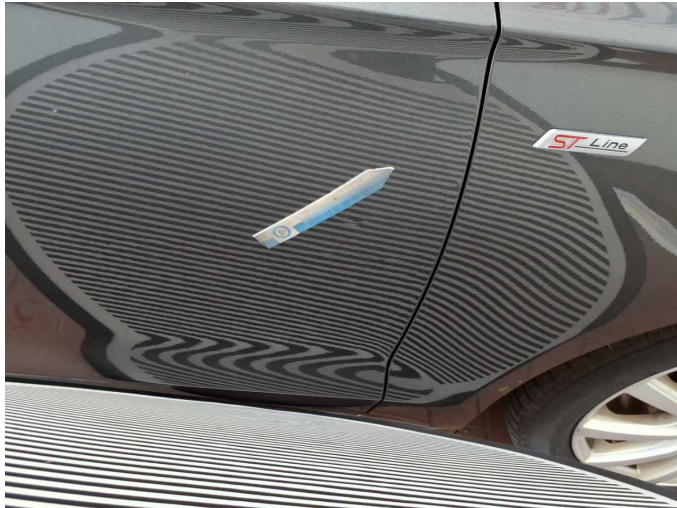
**Damage 6:** Door - front left side: Door (+ Kratzer) - Dent / paintcoat damage - Paint



**Damage 6:** Door - front left side: Door (+ Kratzer) - Dent / paintcoat damage - Paint



**Damage 6:** Door - front left side: Door (+ Kratzer) - Dent / paintcoat damage - Paint



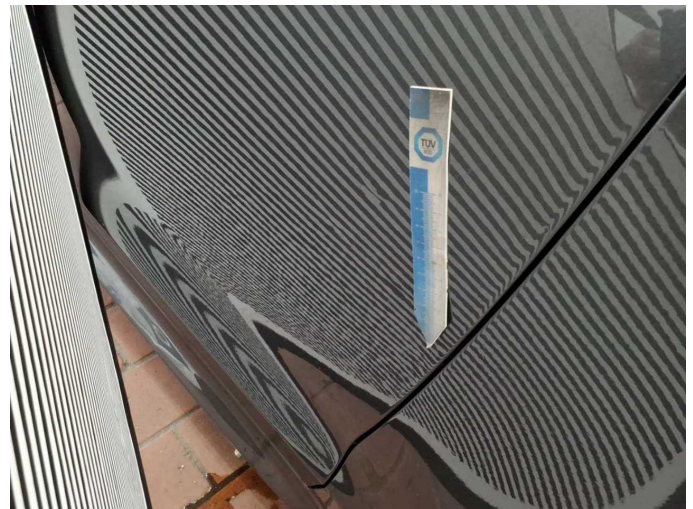
**Damage 7:** Door - front right side: Door - Unprofessionally repaired - Paint



**Damage 7:** Door - front right side: Door - Unprofessionally repaired - Paint



**Damage 7:** Door - front right side: Door - Unprofessionally repaired - Paint



**Damage 7:** Door - front right side: Door - Unprofessionally repaired - Paint



**Damage 7:** Door - front right side: Door - Unprofessionally repaired - Paint



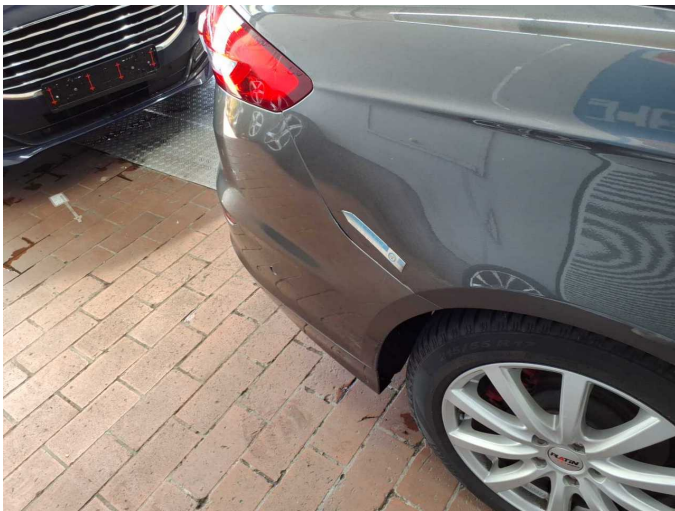
**Damage 8:** Front bumper: Front bumper - Scratched - Paint



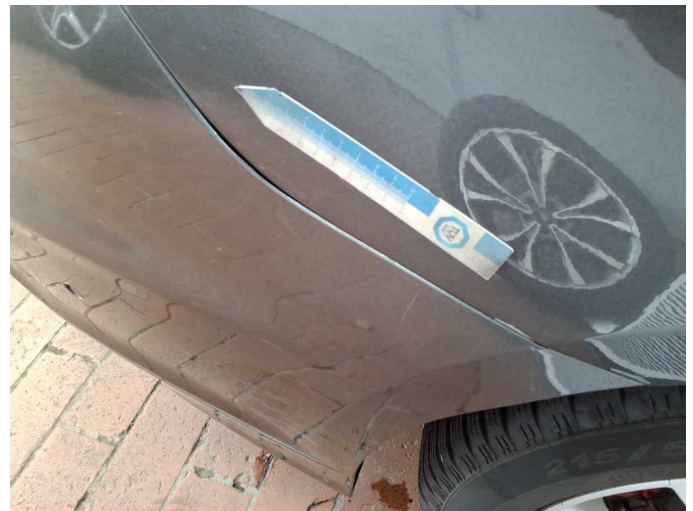
**Damage 8:** Front bumper: Front bumper - Scratched - Paint



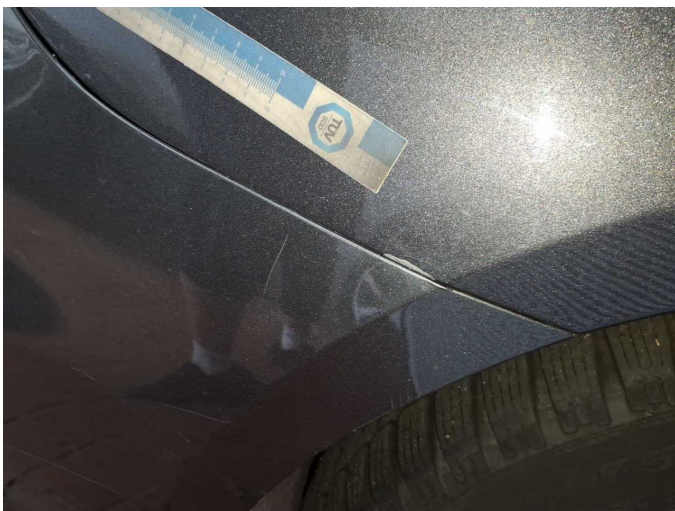
**Damage 8:** Front bumper: Front bumper - Scratched - Paint



**Damage 9:** Rear bumper: Rear bumper - Scratch(es) - Paint



**Damage 9:** Rear bumper: Rear bumper - Scratch(es) - Paint



**Damage 9:** Rear bumper: Rear bumper - Scratch(es) - Paint



**Damage 9:** Rear bumper: Rear bumper - Scratch(es) - Paint



**Damage 9:** Rear bumper: Rear bumper - Scratch(es) - Paint



**Repainting 1:** Roof rail - left side, Side panel - rear left side, Door - rear right side



**Repainting 1:** Roof rail - left side, Side panel - rear left side, Door - rear right side



**Repainting 1:** Roof rail - left side, Side panel - rear left side, Door - rear right side



**Repainting 1:** Roof rail - left side, Side panel - rear left side, Door - rear right side



**Repainting 1:** Roof rail - left side, Side panel - rear left side, Door - rear right side



**Repainting 1:** Roof rail - left side, Side panel - rear left side, Door - rear right side



**Repainting 2:** Door - front right side



**Repainting 2:** Door - front right side



# Wartungshistorie

(gemäß Auftraggeber Informationen)

Fahrgestellnummer: WF0FXXWPCFMJ44613

Hersteller / Modell: FORD FORD Mondeo Turnier 2.0 EcoBlue Aut. ST-Line

Datum	KM-Stand	Beschreibung
15.12.2025	145.872	Bremsflüssigkeit; Bremsflüssigkeit ern; Bremsklötze vorne; Kraftstofffilter ern; Luftfiltereinsatz ern; Motoröl b. Wartung; Ölfilter ern; Regelwartungsdienst; Wartung Sonstiges
10.06.2025	122.877	Bremse Sonstiges; Bremsklötze hinten; Bremsscheiben + Klötze h; Bremsscheiben hinten
25.11.2024	102.745	Batterie ern; Systemtest/Eigendiagnose
30.09.2024	96.811	Bremsklötze vorne; Bremsscheiben + Klötze v; Bremsscheiben vorne
16.08.2024	90.456	Bremsklötze hinten; Bremsscheiben + Klötze h; Bremsscheiben hinten
05.08.2024	87.813	Motoröl b. Wartung; Ölfilter ern; Regelwartungsdienst
15.06.2024	81.627	Bremsklötze hinten; Bremsklötze vorne; Bremsscheiben + Klötze v; Bremsscheiben vorne
13.06.2024	81.624	HU + AU
20.07.2023	56.286	Kraftstofffilter ern; Luftfiltereinsatz ern; Motoröl b. Wartung; Ölfilter ern; Regelwartungsdienst; Wartung Sonstiges
16.03.2022	27.894	Motoröl b. Wartung; Ölfilter ern; Regelwartungsdienst; Wartung Sonstiges