

Expertise

Protocol number: 45736013
Order No. / Reference: 26362035
Inspection date: 29 May 2026

Manufacturer: Volkswagen

Model: Passat Variant 2.0 TDI SCR DSG Business

VIN: WVVZZZ3CZPE018963



Vehicle details

Manufacturer / Type / Model / Equipment

Volkswagen Passat Variant 2.0 TDI SCR DSG Business

Vehicle Identification number WVVZZZ3CZPE018963

Mileage (Read) 215,671 km

First registration 28 Nov 2022

Number of holders 1

Power / Engine displacement 110 kw / 1,968 ccm

Fuel type / Cylinder Diesel / 4

Gearbox / Number of gears Automatic / 7

Type of drive Front drive

Type of vehicle Station wagon

Colour / colour code pyrit silber metallic (B7S)

Doors / Seats 5 / 5

Upholstery type Cloth

Colour of upholstery Black-Grey

TÜV SÜD Auto Partner GmbH
Wiesenring 2
04159 Leipzig

Inspection location
Hartmann Fleet Professionals GmbH
Leerenstraße 25
29683 Bad Fallingbommel



Equipment



Standard equipment

- Airbag for driver and front passenger (airbag deactivation switch on the passenger side)
- Anti-lock braking system (ABS)
- Adaptive Cruise Control (ACC) "stop & go", including speed limiter
- Electrically adjustable and heated exterior mirrors, ambient lighting (automatically dimming on the driver's side)
- Chrome trim on the side windows
- Diesel particulate filter
- Parking aid - warning signals for obstacles in the front and rear area
- Electronic stability program and electromechanical brake booster
- Remote release for luggage compartment lid
- Windscreen made of laminated safety glass, heat and sound insulating
- Transmission: 7-speed DSG (7-speed dual-clutch transmission DSG)
- Interior lights with delayed shut-off and dimming function (2 LED reading lights each at the front and rear)
- Air conditioning (with active combination filter)
- Front headrests (safety-optimized, longitudinally and height-adjustable)
- LED headlights with daytime running lights
- Headlight range control
- Front center armrest, height and length adjustable, with storage box (2 rear air vents with chrome slats)
- Fatigue detection (detects signs of possible driver fatigue based on characteristic steering behavior, time of day and driving duration and issues a visual and audible warning)
- Mesh partition
- Non-smoking version (storage compartment and 12V socket at the front)
- Emergency braking assistant "Front Assist" (for automatic distance control ACC up to 210 km/h)
- Package: Light and Sight Package "Plus" (LED lights in the front footwell - Electrically adjustable and heated exterior mirrors, automatically dimming on the driver's side - Entry/warning lights in the front doors, in LED technology - Automatic headlight control, with daytime running lights, "Leaving Home" function and manual "Coming Home" function - Interior light with delayed shut-off and dimming function, 2 LED reading lights each in the front and rear - Automatically dimming interior mirror - Illuminated vanity mirrors - Extendable sun visors - Rain sensor)
- Tire pressure monitoring system (passive)
- Wheels: 4 light alloy wheels "Sepang" 6.5 J x 16 (tires 215/60 R 16, optimized for rolling resistance)
- Rear bench seat undivided, backrest asymmetrically split and foldable, with center armrest (and pass-through option)
- Power steering (electromechanical, speed-dependent)
- Seats: Comfort seats in the front
- Seats: Lumbar support in the front (driver's side electrically adjustable)
- Airbag, head airbag system for front and rear passengers (including front side airbags)
- App-Connect (Volkswagen offers three interfaces for connecting smartphones with numerous possibilities: - Apple CarPlay - Android Auto from Google - MirrorLink)
- Cup holders (2) front
- Hill start assist
- third brake light
- black roof rails
- Tachometer
- Entry/warning lights in LED technology in the front doors
- Electronic parking brake including auto-hold function
- Automatic headlight control (with daytime running lights, "Leaving home" function and manual "Coming home" function)
- Pedestrian detection
- Adjustable luggage compartment floor
- Rear window heated
- rear window wiper
- ISOFIX mounting points (for attaching 2 child seats to the rear seats, also for i-Size child seats)
- Rear headrests (3)
- LED fog lights and cornering lights
- LED taillights
- Steering wheel: Multifunction steering wheel in leather, with paddle shifters
- Multifunction display "Premium" with multi-color display (showing, among other things: - Outside temperature - Average consumption - Average speed - Trip distance - Trip time - Gear recommendation - Speed warning - Comfort - Current consumption - Range - Service - Time with extended display options, e.g.: - Digital speedometer - Digital oil temperature display - Lights & visibility - Language - Auxiliary heater - Winter tires)
- Emergency call service (no registration required, service is activated upon delivery)
- Upholstery: Fabric "Business" (seat center panels of the front seats and the outer rear seats in fabric "Weave")
- Radio "Composition" (touchscreen with 16.5 cm screen diagonal - 8 speakers - output power 4 x 20 watts - diversity antenna for FM reception - dual tuner - RDS - MP3 playback - USB-C interface - 3-way tone control)
- Radio accessories: Digital radio reception DAB+ (reception of digitally broadcast radio stations and traffic information in addition to the analog station offering - reception depends on the local availability of digital networks - expanded range of radio programs - improved reception performance)
- Wheels: Tire Mobility Set (12-volt compressor and tire sealant)
- Gearshift knob in leather
- Keyless start system without safe locking



- Lane Assist (warns with a corrective steering intervention if the vehicle unintentionally leaves the lane)
- 12V power outlet on the rear center console (and in the luggage compartment)
- First aid kit, warning triangle and high-visibility vest
- Electronic immobilizer
- Central locking with remote control

- Seat belts: Three-point automatic seat belt (seat belt for middle rear seat - seat belts for outer rear seats - front seat belts with height adjustment and belt tensioner)
- Seats: Front seats height-adjustable (ergoComfort seat on the driver's side - with electric backrest adjustment)
- Start-stop system (with brake energy recuperation)
- Telephone interface
- Textile floor mats (front and rear)
- Warning tone and light for unfastened seat belts front and rear

Extra equipment

- Active Info Display
- App-Connect Wireless (Volkswagen offers three interfaces for connecting smartphones with numerous possibilities: - Apple CarPlay - Android Auto from Google - MirrorLink)
- Chassis: Rear suspension with fully automatic level control
- Paint finish: Metallic
- Package: "Business Premium" package incl. navigation (from Business trim level) (2 USB-C ports in the front, USB-C charging socket in the rear, 230V socket, App-Connect incl. wireless, Apple CarPlay, Android Auto, "Travel Assist" driver assistance system and "Lane Assist" lane keeping assist system, Air Care Climatronic with 3-zone temperature control, active combination filter and rear controls, lumbar support in the front, electric on the driver's side, massage function on the driver's side, "Rear View" reversing camera, heated windshield washer nozzles, Comfort telephone interface, inductive charging function, heated front seats)
- Rear side windows and rear window tinted
- Voice control
- Auxiliary heating and ventilation (with radio remote control and timer)

- Towbar, foldable (with electric release)
- Roof headliner in titanium black
- Digital Cockpit, multi-colored (various info profiles selectable)
- Removable luggage compartment protective mat (back of the rear seat backrest with black rubber coating)
- Navigation system "Discover Media" incl. "Streaming & Internet" (4x20 watts, user interface with proximity sensor, dual tuner with phase diversity, vehicle menu, speed, volume adjustment, map, 2D display, tone control, 3-way TFT display with touchscreen operation, navigation "Discover Media" incl. "Streaming & Internet", MP3 radio, telephone contact addresses for navigation, telephone interface, 2 USB ports also for iPod/iPhone, traffic sign recognition "VW Media Control", We Connect Plus, 3 years, incl. We Connect route guidance, dynamic RDS, TMC tuner)
- Proactive occupant protection system and lane change assistant "Side Assist" (Proactive occupant protection system in conjunction with "Front Assist" and "Side Assist" - lane change assistant "Side Assist" and parking assistant)
- "Comfort" telephone interface with inductive charging function (hands-free system)

Brief expert findings

Documents submitted	At the time of the inspection, the vehicle registration certificate Part 2 (title) was available, but the vehicle registration certificate Part 1 (document) was not. (Copy)
VIN comparison	The vehicle identification number (VIN) was read from the vehicle and its conformity with the submitted documents was confirmed by the undersigned during the inspection.
Inspection	The inspection conditions were sufficient for the assessment of the vehicle. No lifting equipment or pit was available for inspecting the vehicle. Therefore, inspection of the vehicle's underside was only possible to a limited extent.
Test drive	No test drive/shunting maneuver was carried out during the inspection of the vehicle.
Engine function test	An engine test run was performed.

Value reducing factors

No.	Component group	Description
1	Boot lid / rear door	Boot lid - Scratch(es) - Smart repair
2	Trim / covers	Boot lid - interior trim - Broken / torn - Replace
3	Rear bumper	Rear bumper - Dent / paintcoat damage - Paint
4	Front bumper	Front bumper - Scratch(es) - Paint
5	Bonnet	Bonnet - Dent / paintcoat damage - Paint



Wear and tear

No.	Component group	Description
1	Side panel - rear left side	Side panel - dent(s) - No deduction
2	Door - rear left side	Door - Scratch(es) - No deduction

The vehicle shows signs of wear and tear commensurate with its age and use.

Previous damages

No.	Previous damage	Extent of damage (Net)
1	Side right, Professionally repaired, Invoice of repair done Non-existent, from 14 Jun 2024	1.858,67 €

Repainting

No.	Repainting
1	Bonnet, Professionally carried out, Invoice of repair done Non-existent
2	Side panel - rear right side, Professionally carried out, Invoice of repair done Non-existent
3	Door - rear right side, Professionally carried out, Invoice of repair done Non-existent
4	Door - front right side, Professionally carried out, Invoice of repair done Non-existent

Paint coat thickness measurement

Bonnet	172 µm	Side panel - rear right side	181 µm
Door - rear right side	165 µm	Door - front right side	220 µm

Order/Scope of Order

An order was placed to prepare a sales report for the described vehicle. This report includes the following:

- Description of key vehicle information
- Documentation of equipment features
(Delivery by third-party service providers)
- Documentation of damage, defects, missing parts
- Documentation of prior damage, unrepaired prior damage, repainting
- A brief visual or functional inspection of the equipment details, if possible.
(Functional testing of driver assistance systems is not included in the scope of services!)
- a photographic documentation of the vehicle



Basis for the order

This product is based on the guidelines for vehicle returns and valuations published by Alphabet Fleet GmbH. The expert makes the specific findings in each individual case objectively, within the framework of the prescribed standards, based on their own expertise.

The vehicle inspection takes place in a fully assembled, unassembled state.

Damage or defects that can only be detected during disassembly/diagnostic work or through further investigation remain within the realm of prognostic risk. An increased risk exists due to concealed defects caused by fraudulent misrepresentation and which were not identifiable by the expert.

Damage or defects resulting from normal use or wear and tear of the vehicle will be accepted in accordance with the applicable standard.

There was no explicit identification or monetary consideration of the expected features within the product.

Features which, in their nature and extent, slightly exceed normal use but do not constitute unacceptable damage, will be documented and indicated as signs of wear, if applicable.

Damage or defects that, according to the applicable standard, can no longer be attributed to normal use or wear and tear are listed under "Value Reducing Factors" in the product description.

Depending on the product specification, a monetary ID can be provided. If this takes place, the costs can be 100% or pro rata depending on the vehicle's age and mileage.

Previous damages

Professionally repaired previous damages were found at the vehicle.

Comments

Der montierte Winterradsatz ist kein Bestandteil der Ausstattung.



Figure 1: Diagonal front (left)



Figure 2: Diagonal front (right)



Figure 3: Diagonal rear (left)



Figure 4: Diagonal rear (right)



Figure 5: Interior - front



Figure 6: Interior - rear



Figure 7: Instrument cluster



Figure 8: Instrument panel



Figure 9: Interior 360° view



Figure 10: Cargo area



Figure 11: VIN

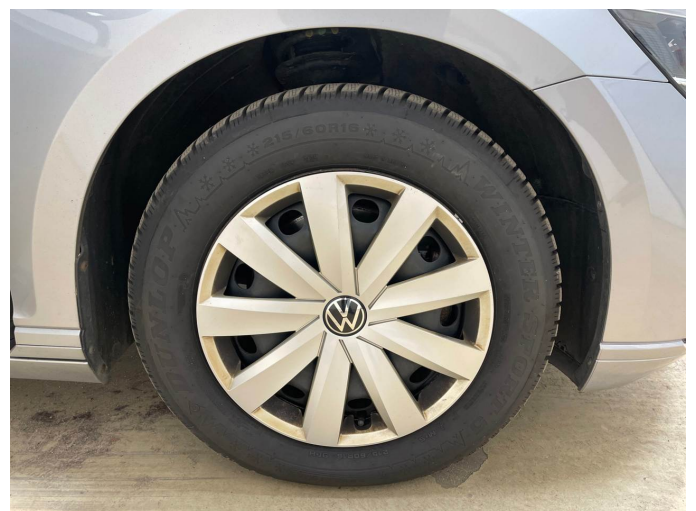


Figure 12: Mounted tyres



Figure 13: Documents



Figure 14: Additional tyres



Figure 15: Additional tyres



Figure 16: Navigation



Figure 17: Misc.



Figure 18: Misc.



Figure 19: Misc.

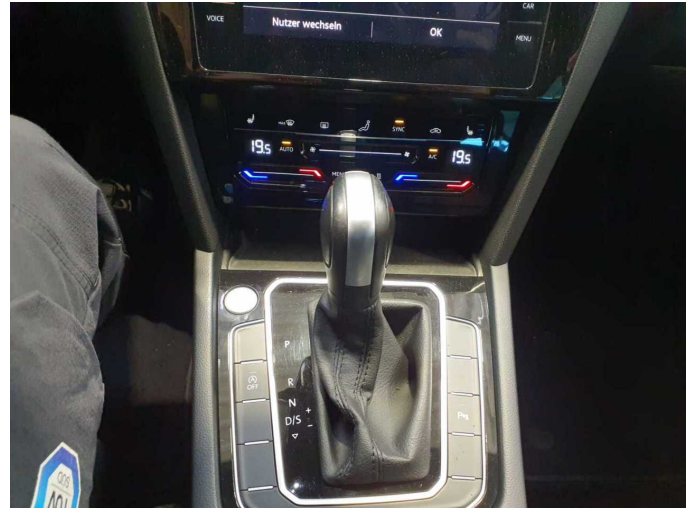


Figure 20: Misc.



Figure 21: Misc.

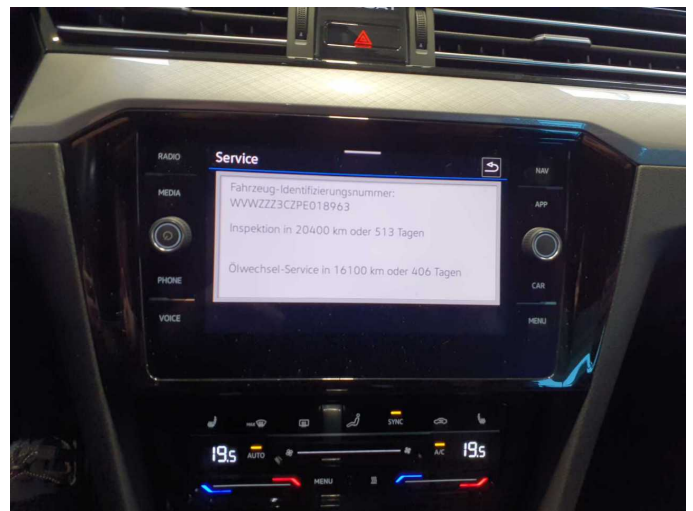


Figure 22: Misc.



Figure 23: Misc.



Figure 24: Misc.



Figure 25: Misc.



Figure 26: Misc.



Figure 27: Misc.

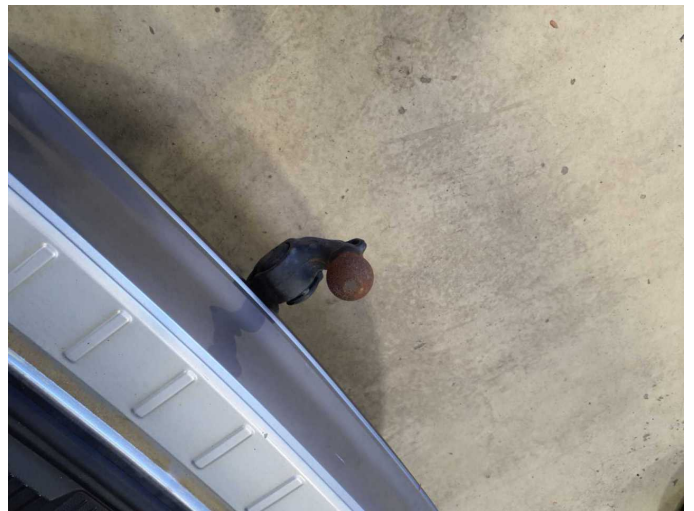


Figure 28: Misc.

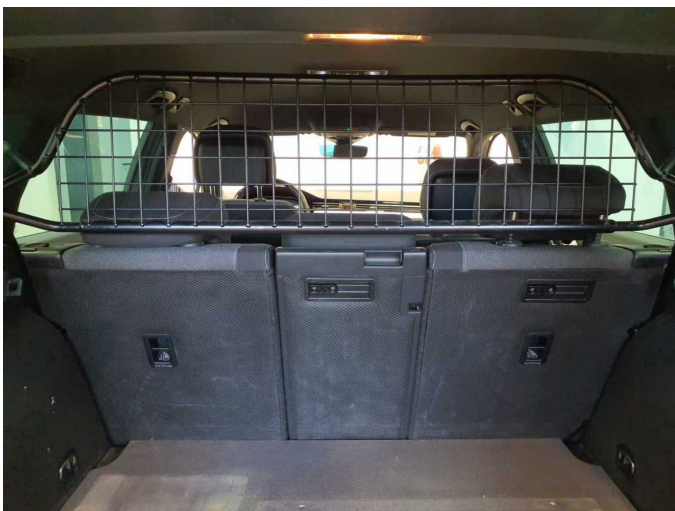


Figure 29: Misc.



Figure 30: Misc.



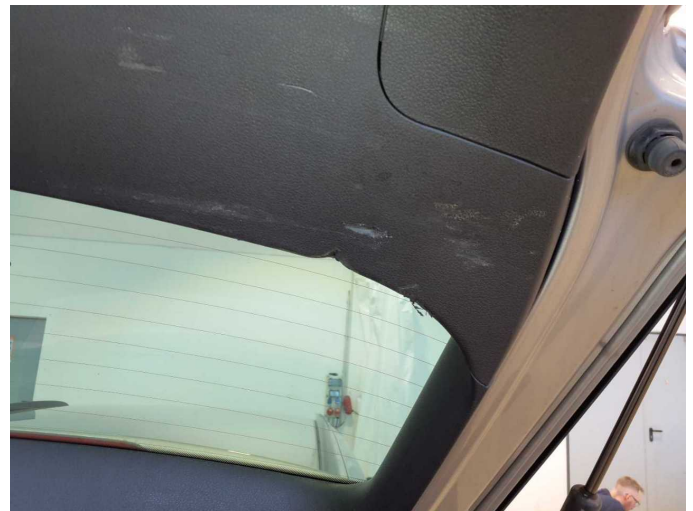
Damage 1: Boot lid / rear door: Boot lid - Scratch(es) - Smart repair



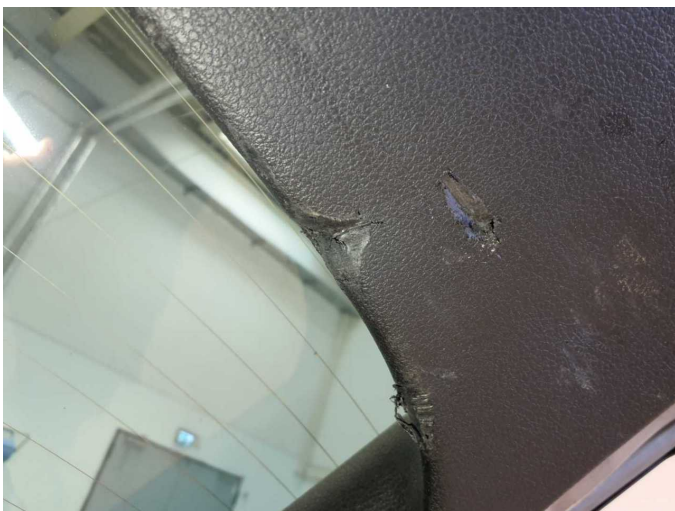
Damage 1: Boot lid / rear door: Boot lid - Scratch(es) - Smart repair



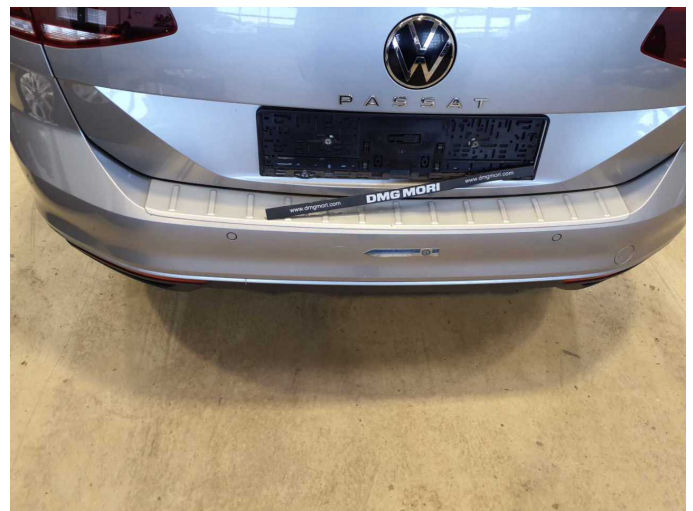
Damage 1: Boot lid / rear door: Boot lid - Scratch(es) - Smart repair



Damage 2: Trim / covers: Boot lid - interior trim - Broken / torn - Replace



Damage 2: Trim / covers: Boot lid - interior trim - Broken / torn - Replace



Damage 3: Rear bumper: Rear bumper - Dent / paintcoat damage - Paint



Damage 3: Rear bumper: Rear bumper - Dent / paintcoat damage - Paint



Damage 4: Front bumper: Front bumper - Scratch(es) - Paint

Damage 4: Front bumper: Front bumper - Scratch(es) - Paint



Damage 4: Front bumper: Front bumper - Scratch(es) - Paint

Damage 4: Front bumper: Front bumper - Scratch(es) - Paint



Damage 5: Bonnet: Bonnet - Dent / paintcoat damage - Paint



Damage 5: Bonnet: Bonnet - Dent / paintcoat damage - Paint



Damage 5: Bonnet: Bonnet - Dent / paintcoat damage - Paint



Damage 5: Bonnet: Bonnet - Dent / paintcoat damage - Paint



Repainting 1: Bonnet



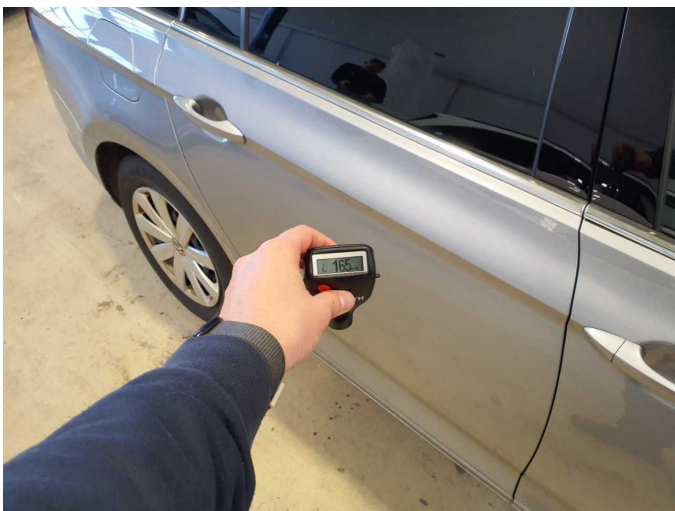
Repainting 1: Bonnet



Repainting 2: Side panel - rear right side



Repainting 2: Side panel - rear right side



Repainting 3: Door - rear right side



Repainting 3: Door - rear right side



Repainting 4: Door - front right side



Repainting 4: Door - front right side



Wartungshistorie

(gemäß Auftraggeber Informationen)

Fahrgestellnummer: WVWZZZ3CZPE018963
Hersteller / Modell: VOLKSWAGEN VOLKSWAGEN Passat Variant 2.0 TDI SCR DSG Business

Datum	KM-Stand	Beschreibung
12.12.2025	215.477	AU; Bremse Sonstiges; Bremsklötze hinten; Bremsklötze vorne; Ölfilter ern; Reparatur Sonstiges; Wartung Sonstiges
06.11.2025	209.458	Reparatur Sonstiges; Spannrolle ern; Zahnriemen/Steuerkett ern
28.10.2025	206.064	Motoröl b. Wartung; Ölfilter ern; Regelwartungsdienst; Wartung Sonstiges
21.07.2025	186.677	Bremse Sonstiges; Bremsklötze vorne; Bremsscheiben + Klötze v; Bremsscheiben vorne
19.05.2025	175.857	Bremse Sonstiges; Bremsklötze hinten; Bremsscheiben + Klötze h; Bremsscheiben hinten; Kraftstofffilter ern; Luftfiltereinsatz ern; Motoröl b. Wartung; Ölfilter ern; Regelwartungsdienst; Systemtest/Eigendiagnose; Wartung Sonstiges
06.01.2025	149.447	Bremsflüssigkeit; Bremsflüssigkeit ern; Motoröl b. Wartung; Ölfilter ern; Regelwartungsdienst; Systemtest/Eigendiagnose; Wartung Sonstiges
21.10.2024	134.238	Bremse Sonstiges; Bremsklötze vorne; Bremsscheiben vorne
02.08.2024	119.025	Bremse Sonstiges; Bremsklötze hinten; Bremsscheiben hinten; Getriebeöl ern/prüfen; Motoröl b. Wartung; Ölfilter ern; Regelwartungsdienst; Wartung Sonstiges
15.04.2024	98.098	Bremse Sonstiges; Bremsklötze vorne; Bremsscheiben vorne
06.03.2024	87.260	Kraftstofffilter ern; Luftfiltereinsatz ern; Motoröl b. Wartung; Ölfilter ern; Regelwartungsdienst; Systemtest/Eigendiagnose; Wartung Sonstiges
26.10.2023	57.091	Motoröl b. Wartung; Ölfilter ern; Regelwartungsdienst; Wartung Sonstiges
29.09.2023	51.749	Bremse Sonstiges; Bremsklötze vorne; Bremsscheiben vorne
18.09.2023	48.576	Bremse Sonstiges; Bremsklötze hinten; Bremsscheiben hinten
26.05.2023	25.487	Motoröl b. Wartung; Ölfilter ern; Regelwartungsdienst; Wartung Sonstiges