

Expertise

Protocol number: 46279383
Order No. / Reference: 26551275
Inspection date: 29 Jun 2026

Manufacturer: Mercedes-Benz

Model: GLB 200 d 8G-DCT Progressive Advanced

VIN: W1N4M1CBXSW379428



Vehicle details

Manufacturer / Type / Model / Equipment

Mercedes-Benz GLB 200 d 8G-DCT Progressive Advanced

Vehicle Identification number W1N4M1CBXSW379428

Mileage (Read) 68,748 km

First registration 28 Aug 2024

Number of holders 1

Next periodical technical inspection 08/2027
(Report not on hand)

Power / Engine displacement 110 kw / 1,950 ccm

Fuel type / Cylinder Diesel / 4

Gearbox / Number of gears Automatic / 8

Type of drive Front drive

Type of vehicle SUV

Colour / colour code NACHTSCHWARZ
UNILACK

Doors / Seats 5 / 5

Upholstery type Cloth / leather
combination

Colour of upholstery Black

Re-import no

readiness to drive Roadworthy



Vehicle details			
Maintenance booklet / proof	digital proof / complete	Next maintenance in	167 Tag(e)
Last service on / at	12/2025 at 51,838 km		
Key is / should be	2 / 2	FZG documents	ZB#2 (B) was available (copy), ZB#1 (S) was not available.
		Letter No.	HB250741
Previous damage / Accident	None detectable	Repainting	None detectable
Inspection conditions	sufficient	Lifting equipment / pit	yes
Test drive	Not performed	Engine function test	Performed
readiness to drive	Roadworthy		
Manufacturer key number/ type code number	2222 / AHY 00209		
Emission standard	EURO6;WLTP;EA;PI/CI;M, N1, N2	fine dust sticker	
Permitted total weight	2,230 kg	Empty weight	

Tyres

Mounted tyres				
#	Tyre size	Type of tyre	Manufacturer	Tread depth
1)	215/65 R17 99H	Winter tyres on Light alloy	Michelin	3mm / 3mm
2)	215/65 R17 99H	Winter tyres on Light alloy	Michelin	5mm / 5mm
Replacement				
Typ	Tyre size	Type of tyre	Manufacturer	Tread depth
	Tirefit	Expiration date 05/2029		

Legend: Tread depth information for the left tire is listed first, for the right tire it is listed second on the axle in the direction of travel.

TÜV SÜD Auto Partner GmbH
Wiesenring 2
04159 Leipzig

Inspection location
Hartmann Fleet Professionals GmbH
Leerenstraße 25
29683 Bad Fallingbommel



Equipment



Standard equipment

- Storage compartment in center console with roller blind (The roller blind for the storage compartment in the center console offers you an elegant privacy screen made of high-quality material. This looks good, the interior appears even tidier, and everything important is within easy reach. Typical everyday items such as a smartphone, wallet, or various keys fit into the practical storage compartment.)
- Active Lane Keeping Assist
- Rear armrest
- Automatic passenger airbag deactivation
- Heated exterior mirrors on the left and right, electrically adjustable from the inside (with aspherically curved mirror glass and integrated turn signal light)
- On-board computer
- Chrome trim strip
- Roof rails in polished aluminum
- Double cup holder
- Third brake light in LED technology
- EASY-PACK tailgate (electrically opening and closing tailgate - switch for electrically opening the tailgate in the driver's door - switch for electrically closing the tailgate at the bottom edge of the tailgate - manual cargo cover for covering the cargo area)
- ECO start/stop function
- Door sills with "Mercedes-Benz" lettering
- Electronic Stability Program (ESP)
- Electric window regulators (4)
- Luggage net on driver and passenger seatbacks
- Transmission: 8G-DCT dual-clutch automatic transmission, 8-speed
- Rear window heated
- rear window wiper
- Black fabric headliner
- Climate: THERMATIC automatic climate control (1-zone climate control - automatically controlled air distribution - recirculation function - tunnel mode in conjunction with navigation system - fine dust filter)
- Headrests (2)
- Rear headrests (3)
- Paint finish: Solid
- LED High Performance Headlights (LED High Performance headlights offer you greater safety at night and a distinctive, striking look. Thanks to LED technology, they illuminate the road better than conventional headlights - with lower energy consumption.)
- Steering column mechanically adjustable lengthwise and heightwise.
- Mercedes-Benz Emergency Call System (The Mercedes-Benz Emergency Call System can provide a crucial time advantage in an emergency. A communication module with its own SIM card automatically triggers an emergency call upon detection of an accident, which can shorten the time until emergency services arrive. The emergency call can also be triggered manually to organize assistance.)
- Adaptive Highbeam Assist
- Airbag for driver and front passenger
- Airbag: Kneebag for driver
- Airbag: Sidebag for driver and front passenger (combined thorax/pelvisbag)
- Airbag: Windowbags
- Active Brake Assist
- Anti-lock braking system (ABS)
- ATTENTION ASSIST (can detect typical signs of fatigue via steering behavior and can warn the driver of impending microsleep)
- Basic services (accident and breakdown management, maintenance management, remote diagnostics, remote vehicle diagnostics, software update (model dependent), individual consumption display in the app)
- Diesel particulate filter
- Tachometer
- DYNAMIC SELECT (Simply drive the way you want. At the touch of a button, DYNAMIC SELECT offers various driving programs that predefine, for example, the engine, transmission, suspension, or steering. Sport mode provides a decidedly dynamic driving experience, while the basic Comfort program offers a very balanced ride. ECO mode, on the other hand, prioritizes maximum efficiency, saving fuel and money.)
- Chassis: Comfort chassis
- Velour floor mats
- Speed Limit Assist (The Speed Limit Assist makes it easy for you to comply with the regulations and avoid unnecessary speeding tickets. The system shows what is permitted: It can detect the current speed limit via the camera and display it in the instrument cluster. Additional restrictive signs for special weather conditions such as wet conditions are also detected.)
- Communication module (LTE) for the use of Mercedes me connect services (communication module with permanently installed SIM card of the mobile communications standard LTE - two mobile communications antennas)
- Cargo area cover (roller blind) (stores under the cargo floor)
- Steering wheel: Multifunction sports steering wheel in leather (The elegant leather covering makes the multifunction sports steering wheel even more premium, turning it into a highlight of the interior. As a driver, you benefit in two ways: What looks good must also feel good. Among other things, the touch control buttons on the left and right operate a variety of functions, from navigation and telephony to entertainment. Last but not least, you can set the speed and distance control: Everything under control without taking your hands off the steering wheel.)
- Hood with power domes
- Navigation accessories: Extended MBUX functions (personalization (profiles) and prediction functions - LINGUATRONIC with natural language understanding - activation via "Hey Mercedes" - Wi-Fi hotspot - internet radio)



- Package: Light and Sight Package (Overhead control unit with 4 light elements (including glasses compartment) - Interior light/reading light rear in mounting plate (rear/left/right) - Touchpad lighting (front) - Reading lights (front/left/right), console ambient light - Make-up lights (front/left/right) - Signal and ambient light - Exit signal light (front/left/right) - Footwell lighting (front/left/right) - Cupholder/storage compartment lighting - Occasional storage compartment lighting)
- Package: Seating comfort (height adjustment for passenger seat - seat cushion tilt adjustment for driver and passenger seats - seat cushion depth adjustment for improved seating comfort through a 60 mm wider thigh support area - specific seat design)
- Package: USB Package Plus (1 USB-C port in the storage compartment in the front part of the center console, fast charging and suitable for data transfer; 2 USB-C ports under the front center armrest, fast charging and suitable for data transfer; 2 USB-C ports for the rear seats at the back of the center armrest, fast charging; 12V socket in the storage compartment in the front part of the center console)
- Tire pressure monitoring system (TPMS)
- Rear view camera
- Windscreen wipers with rain sensor
- Side panels in black grained finish with chrome insert
- Seats: 4-way lumbar support for driver and front passenger
- Seats: Comfort seats (the comfort seat offers you good long-distance comfort and comprehensive adjustments in length and height. You can also adjust the seat cushion angle and even extend it.)
- Front and rear underride protection (visual underride protection)
- Pre-installation for digital key handover (Share your vehicle with friends and family members more easily than ever before – no matter where you are. You retain full control and decide conveniently via app whether you consent to its use. You can also unlock your vehicle remotely via the mobile application. Only then will a stored key be activated. Service is free of charge for 3 years from activation.)
- Package: Parking package with reversing camera (12 ultrasonic sensors: six each in the front and rear bumpers - Active Parking Assist - Reversing camera - PARKTRONIC - Rear Cross Traffic Alert - Drive Away Assist - Button for Active Parking Assist incl. PARKTRONIC on the center console)
- Package: Progressive Line Advanced (00U Remote Services 873 Heated seats for driver and front passenger 942 Load compartment package B51 TIREFIT P59 Progressive PBG MBUX Navigation Premium PDA Advanced package)
- Package: Mirror package (Exterior mirrors electrically fold in and out via a button in the driver's door control panel - the menu allows you to set the exterior mirrors to fold in automatically when locking the vehicle and unfold again when unlocking - the exterior mirror on the driver's side and the interior mirror dim automatically and continuously depending on the incident glare and ambient light)
- Upholstery: ARTICO leatherette/fabric
- Radio accessories: Digital radio
- Wheels: 45.7 cm (18") light alloy wheels in 5-twin-spoke design (aerodynamically optimized, painted black and polished with 235/55 R18 on 7.0J x 18 ET53)
- Power steering
- Seats: Rear seat backrests foldable (in a 40/20/40 ratio and adjustable to 7 tilt positions)
- Seats: Rear seat backrests foldable (40/20/40 split ratio)
- 12V power outlet in center console
- Cruise control (Drive relaxed and fuel-efficiently, especially on longer journeys. Simply select your desired speed and your vehicle will regulate it. In addition to the cruising speed, the speed limiter helps you maintain a maximum speed. This increases road safety and protects you from expensive speeding tickets.)
- High-visibility vest for drivers
- Immobiliser
- Decorative elements Star Pattern



Extra equipment

- Active Parking Assist
- Interior headliner fabric crystal grey
- Package: Progressive Line Advanced Plus (KEYLESS-GO Comfort Package (incl. HANDS-FREE ACCESS and KEYLESS-GO) - Ambient lighting - Wireless charging system for mobile devices in the front - Fully digital instrument display - Personalization package - Fingerprint scanner)
- PRE-SAFE System (The PRE-SAFE System utilizes the time before an impending accident. A variety of measures can reduce the stresses that occur. The innovative PRE-SAFE Sound generates a noise from the speakers and can trigger a natural protective reflex. This protects the inner ear by dampening the noise of the accident.)
- Towbar with ESP trailer stabilization
- Upholstery: ARTICO man-made leather
- Cargo net (This feature protects you from loose items in the luggage compartment. The cargo net is very easy to use. You can attach or remove it in just a few steps.)
- Package: Driving Assistance Package (Active Distance Assist DISTRONIC, active up to a speed of 160 km/h - Active Speed Limit Assist - Extended automatic restart on highways - Route-based speed adaptation - Active Steering Assist - Active Emergency Stop Assist with SOS function - Active Brake Assist - Turning function with vehicle, pedestrian and cyclist detection - Evasive Steering Assist - Active Lane Keeping Assist - Blind Spot Assist - Exit Warning Function - Pre-Safe System)
- Traffic Sign Assist (networked system consisting of a camera behind the windshield and navigation maps - display of speed limits, prohibitions and their cancellation in the instrument display or media display as well as in the optionally available head-up display - visual and, if desired, additional acoustic warning when exceeding the permitted maximum speed, whereby the tolerance threshold can be raised to up to 10 km/h - can recognize no-entry signs, providing a visual and acoustic warning)

Brief expert findings

Documents submitted	At the time of the inspection, the vehicle registration certificate Part 2 (title) was available, but the vehicle registration certificate Part 1 (document) was not. (Copy)
VIN comparison	The vehicle identification number (VIN) was read from the vehicle and its conformity with the submitted documents was confirmed by the undersigned during the inspection.
Inspection	The inspection conditions were sufficient for the assessment of the vehicle. Lifting equipment and/or a pit were available for examining the vehicle.
Test drive	No test drive/shunting maneuver was carried out during the inspection of the vehicle.
Engine function test	An engine test run was performed.
readiness to drive	The vehicle was roadworthy at the time of inspection.

Value reducing factors

No.	Component group	Description
1	Wheel / tyres	Tyre - front - Does not meet the leasing specifications - No deduction
2	Trim / covers	Boot lid - interior trim - Scratch(es) - Loss in value
3	Interior	Cargo area floor (Griffabdeckung) - Broken / torn - Replace
4	Boot lid / rear door	Boot lid - Dent / paintcoat damage - Smart repair
5	Rear bumper	Rear bumper - Scratch(es) - Smart repair
6	Door - front right side	Door (Verkleidung unten) - Scratch(es) - Replace
7	Mudguard - right side	Wheel well extension - Scratch(es) - Replace
8	Rear bumper	Rear bumper (Zierleiste) - dent(s) - Replace
9	Door - rear right side	Door - Dent / paintcoat damage - Repair and paint
10	Vehicle glazing	Windscreen - Stone chips - Replace
11	Front bumper	Front bumper (Zusätzlich Blende rechts unten Kratzer) - Scratch(es) - Replace



Wear and tear

No.	Component group	Description
1	Bonnet	Bonnet - Stone chips - No deduction
2	Door - front left side	Door edge - Scratch(es) - No deduction
3	Door - front right side	Door - Dent / paintcoat damage - No deduction

The vehicle shows signs of wear and tear commensurate with its age and use.

Missing parts

Description

2nd wheel set - 2nd wheel set

Order/Scope of Order

An order was placed to prepare a sales report for the described vehicle. This report includes the following:

- Description of key vehicle information
- Documentation of equipment features
(*Delivery by third-party service providers*)
- Documentation of damage, defects, missing parts
- Documentation of prior damage, unrepaired prior damage, repainting
- A brief visual or functional inspection of the equipment details, if possible.
(*Functional testing of driver assistance systems is not included in the scope of services!*)
- a photographic documentation of the vehicle

Basis for the order

This product is based on the guidelines for vehicle returns and valuations published by Alphabet Fleet GmbH. The expert makes the specific findings in each individual case objectively, within the framework of the prescribed standards, based on their own expertise.

The vehicle inspection takes place in a fully assembled, unassembled state.

Damage or defects that can only be detected during disassembly/diagnostic work or through further investigation remain within the realm of prognostic risk. An increased risk exists due to concealed defects caused by fraudulent misrepresentation and which were not identifiable by the expert.

Damage or defects resulting from normal use or wear and tear of the vehicle will be accepted in accordance with the applicable standard.

There was no explicit identification or monetary consideration of the expected features within the product.

Features which, in their nature and extent, slightly exceed normal use but do not constitute unacceptable damage, will be documented and indicated as signs of wear, if applicable.

Damage or defects that, according to the applicable standard, can no longer be attributed to normal use or wear and tear are listed under "Value Reducing Factors" in the product description.

Depending on the product specification, a monetary ID can be provided. If this takes place, the costs can be 100% d or pro rata depending on the vehicle's age and mileage.

Previous damages

No apparent prior damage that had been repaired could be found on the vehicle.

Comments

- Für den montierten Radsatz wurde kein Nachweis erbracht.
- Winterradsatz ist kein Bestandteil des Auslieferungsumfangs.



Figure 1: Diagonal front (left)



Figure 2: Diagonal front (right)



Figure 3: Diagonal rear (left)



Figure 4: Diagonal rear (right)



Figure 5: Interior - front



Figure 6: Interior - rear



Figure 7: Instrument cluster



Figure 8: Instrument panel



Figure 9: Interior 360° view



Figure 10: Cargo area

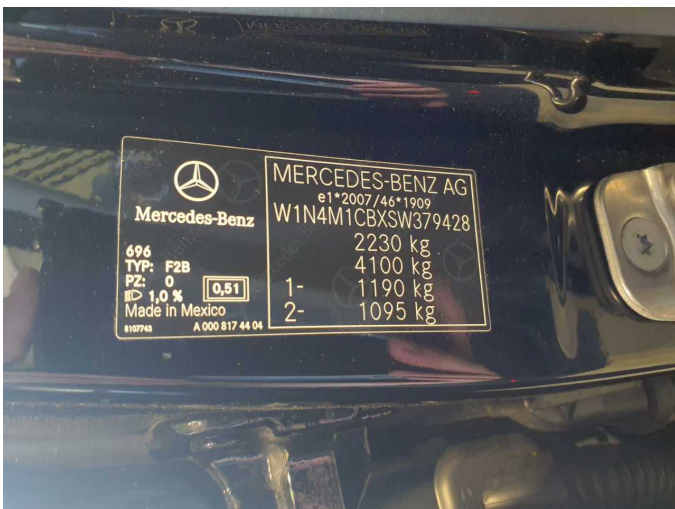


Figure 11: VIN



Figure 12: Mounted tyres



Figure 13: Documents



Figure 14: Navigation



Figure 15: Misc.



Figure 16: Misc.



Figure 17: Misc.



Figure 18: Misc.



Figure 19: Misc.



Figure 20: Misc.

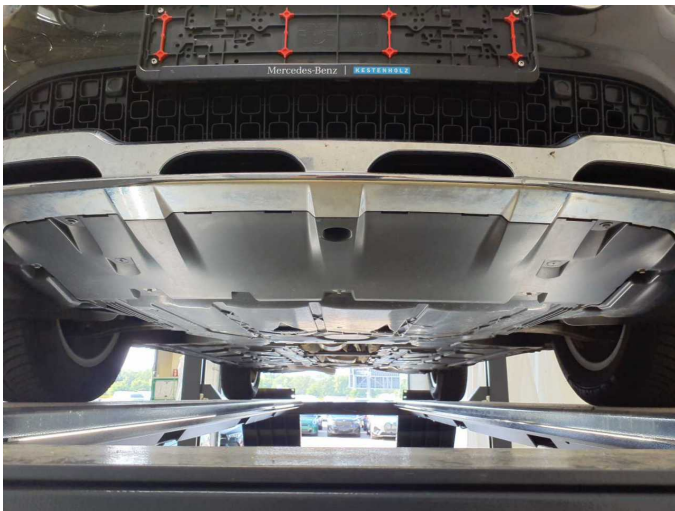


Figure 21: Misc.



Figure 22: Misc.



Figure 23: Misc.



Figure 24: Misc.



Figure 25: Misc.



Figure 26: Misc.



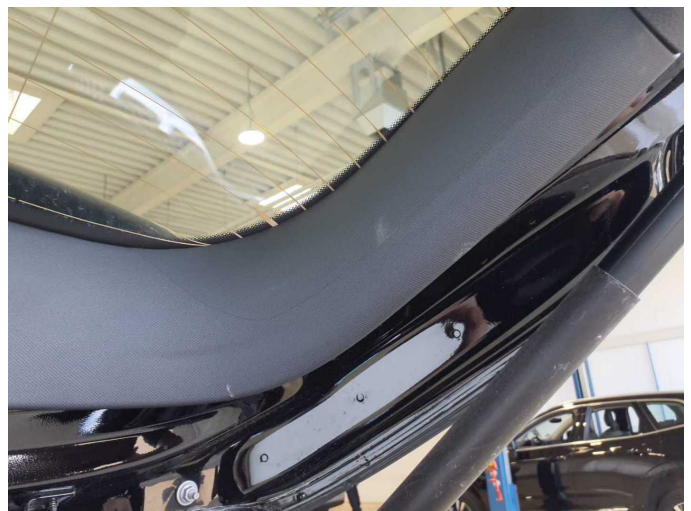
Figure 27: Misc.



Damage 2: Trim / covers: Boot lid - interior trim - Scratch(es) - Loss in value



Damage 2: Trim / covers: Boot lid - interior trim - Scratch(es) - Loss in value



Damage 2: Trim / covers: Boot lid - interior trim - Scratch(es) - Loss in value



Damage 2: Trim / covers: Boot lid - interior trim - Scratch(es) - Loss in value



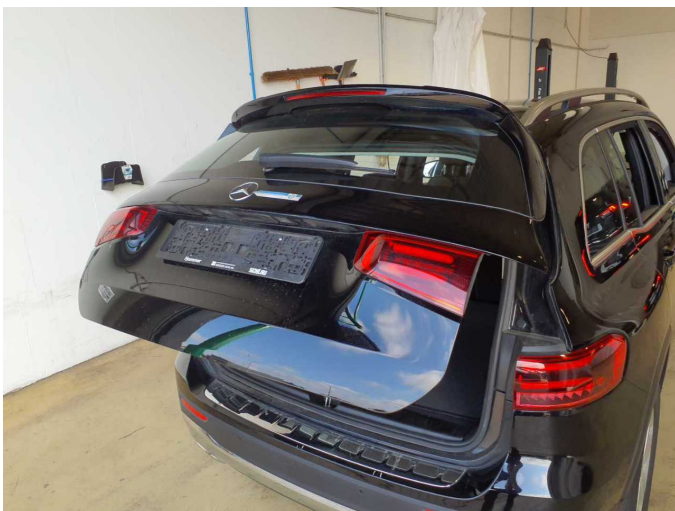
Damage 2: Trim / covers: Boot lid - interior trim - Scratch(es) - Loss in value



Damage 3: Interior: Cargo area floor (Griffabdeckung) - Broken / torn - Replace



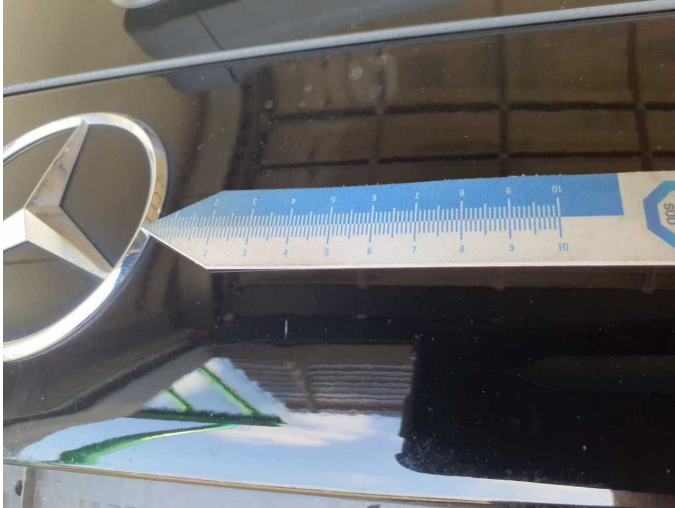
Damage 3: Interior: Cargo area floor (Griffabdeckung) - Broken / torn - Replace



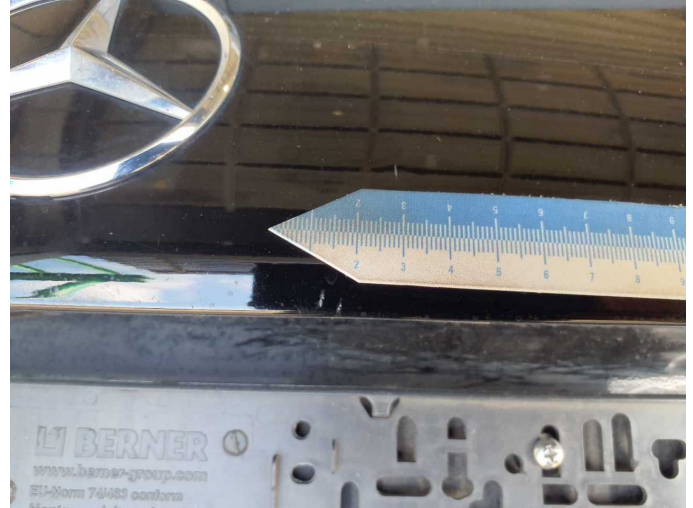
Damage 4: Boot lid / rear door: Boot lid - Dent / paintcoat damage - Smart repair



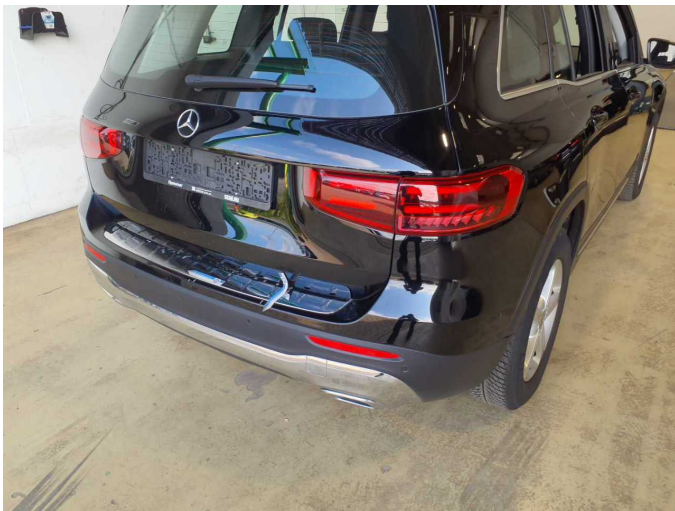
Damage 4: Boot lid / rear door: Boot lid - Dent / paintcoat damage - Smart repair



Damage 4: Boot lid / rear door: Boot lid - Dent / paintcoat damage - Smart repair



Damage 4: Boot lid / rear door: Boot lid - Dent / paintcoat damage - Smart repair



Damage 5: Rear bumper: Rear bumper - Scratch(es) - Smart repair



Damage 5: Rear bumper: Rear bumper - Scratch(es) - Smart repair



Damage 5: Rear bumper: Rear bumper - Scratch(es) - Smart repair



Damage 5: Rear bumper: Rear bumper - Scratch(es) - Smart repair



Damage 5: Rear bumper: Rear bumper - Scratch(es) - Smart repair



Damage 5: Rear bumper: Rear bumper - Scratch(es) - Smart repair



Damage 5: Rear bumper: Rear bumper - Scratch(es) - Smart repair



Damage 6: Door - front right side: Door (Verkleidung unten) - Scratch(es) - Replace



Damage 6: Door - front right side: Door (Verkleidung unten) - Scratch(es) - Replace



Damage 6: Door - front right side: Door (Verkleidung unten) - Scratch(es) - Replace



Damage 7: Mudguard - right side: Wheel well extension - Scratch(es) - Replace



Damage 7: Mudguard - right side: Wheel well extension - Scratch(es) - Replace



Damage 8: Rear bumper: Rear bumper (Zierleiste) - dent(s) - Replace



Damage 8: Rear bumper: Rear bumper (Zierleiste) - dent(s) - Replace



Damage 8: Rear bumper: Rear bumper (Zierleiste) - dent(s) - Replace



Damage 9: Door - rear right side: Door - Dent / paintcoat damage - Repair and paint



Damage 9: Door - rear right side: Door - Dent / paintcoat damage - Repair and paint



Damage 9: Door - rear right side: Door - Dent / paintcoat damage - Repair and paint



Damage 9: Door - rear right side: Door - Dent / paintcoat damage - Repair and paint



Damage 10: Vehicle glazing: Windscreen - Stone chips - Replace



Damage 10: Vehicle glazing: Windscreen - Stone chips - Replace



Damage 10: Vehicle glazing: Windscreen - Stone chips - Replace



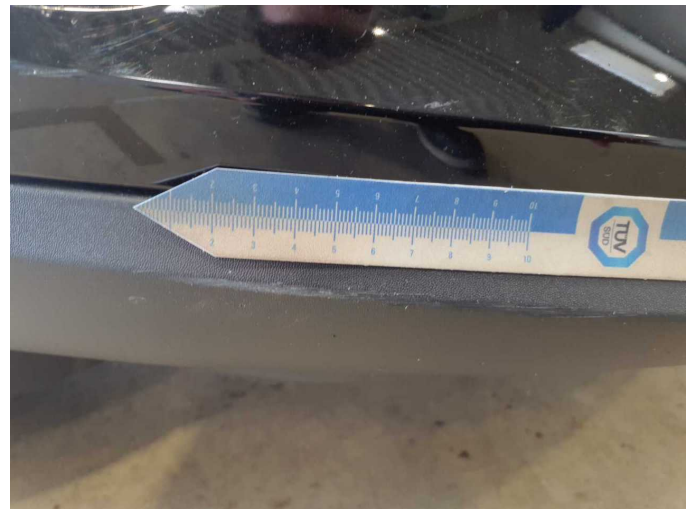
Damage 11: Front bumper: Front bumper (Zusätzlich Blende rechts unten Kratzer) - Scratch(es) - Replace



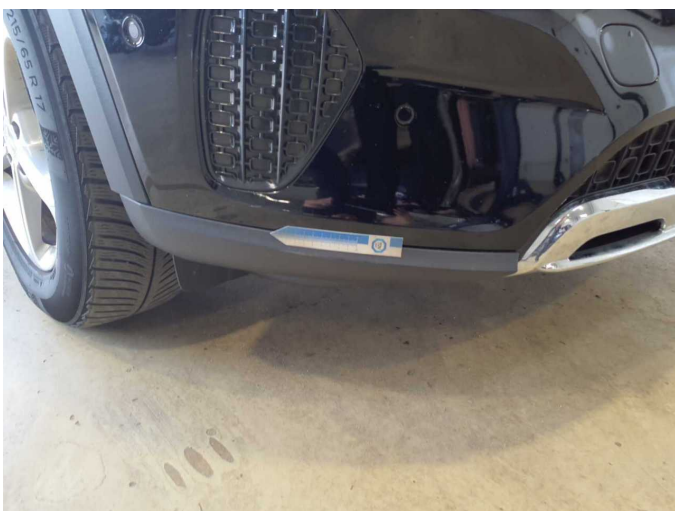
Damage 11: Front bumper: Front bumper (Zusätzlich Blende rechts unten Kratzer) - Scratch(es) - Replace



Damage 11: Front bumper: Front bumper (Zusätzlich Blende rechts unten Kratzer) - Scratch(es) - Replace



Damage 11: Front bumper: Front bumper (Zusätzlich Blende rechts unten Kratzer) - Scratch(es) - Replace



Damage 11: Front bumper: Front bumper (Zusätzlich Blende rechts unten Kratzer) - Scratch(es) - Replace