

## Expertise

Protocol number: 46040697  
Order No. / Reference: 26489592  
Inspection date: 19 Jun 2026

Manufacturer: Ford

Model: Transit Connect 230 L2 LKW S&S Autm. Trend Kombi

VIN: WF07XXWPG7NY79070



### Vehicle details

#### Manufacturer / Type / Model / Equipment

Ford Transit Connect 230 L2 LKW S&S Autm. Trend Kombi

<b>Vehicle Identification number</b>	WF07XXWPG7NY79070
<b>Mileage (Read)</b>	191,790 km
<b>First registration</b>	17 May 2022
<b>Number of holders</b>	1
<b>Next periodical technical inspection</b>	09/2026 (Report not on hand)

<b>Power / Engine displacement</b>	88 kw / 1,499 ccm
------------------------------------	-------------------

<b>Fuel type / Cylinder</b>	Diesel / 4
-----------------------------	------------

<b>Gearbox / Number of gears</b>	Automatic / 8
----------------------------------	---------------

<b>Type of drive</b>	Front drive
----------------------	-------------

<b>Type of vehicle</b>	Station wagon
------------------------	---------------

<b>Colour / colour code</b>	Frost-Weiß
-----------------------------	------------

<b>Doors / Seats</b>	5 / 5
----------------------	-------

<b>Upholstery type</b>	Cloth
------------------------	-------

<b>Colour of upholstery</b>	Black-Anthracite
-----------------------------	------------------

<b>Re-import</b>	no
------------------	----

<b>readiness to drive</b>	Roadworthy
---------------------------	------------



Vehicle details			
<b>Maintenance booklet / proof</b>	digital proof / complete	<b>Next maintenance in</b>	12 %
<b>Last service on / at</b>	03/2026 at 182,000 km		
<b>Key is / should be</b>	2 / 2	<b>FZG documents</b>	ZB#2 (B) was available (copy), ZB#1 (S) was not available.
		<b>Letter No.</b>	GK794796
<b>Previous damage / Accident</b>	None detectable	<b>Repainting</b>	None detectable
<b>Inspection conditions</b>	sufficient	<b>Lifting equipment / pit</b>	yes
<b>Test drive</b>	Not performed	<b>Engine function test</b>	Performed
<b>readiness to drive</b>	Roadworthy		
<b>Manufacturer key number/ type code number</b>	8566 / BMN 02419		
<b>Emission standard</b>	EURO6;WLTP;AR;PI/CI;N1 III, N2	<b>fine dust sticker</b>	
<b>Permitted total weight</b>	2,445 kg	<b>Empty weight</b>	

## Tyres

Mounted tyres				
#	Tyre size	Type of tyre	Manufacturer	Tread depth
1)	205/60 R16 96H	Summer tyres on Light alloy	Continental	4mm / 4mm
2)	205/60 R16 96H	Summer tyres on Light alloy	Continental	4mm / 4mm

Additional tyres				
#	Tyre size	Type of tyre	Manufacturer	Tread depth
1)	205/60 R16 96H	Winter tyres on Light alloy	Semperit	5mm / 5mm
2)	205/60 R16 96H	Winter tyres on Light alloy	Semperit	5mm / 5mm

Replacement				
Typ	Tyre size	Type of tyre	Manufacturer	Tread depth
E	205/55 R16 94V	Summer tyres on Steel	Fulda	6 mm

**Legend: Tread depth information for the left tire is listed first, for the right tire it is listed second on the axle in the direction of travel.**



## Equipment

### Standard equipment

- ABS with EBD
- Exterior mirrors, electrically adjustable and heated
- Battery, reinforced
- Floor covering: Carpet (1st and 2nd row)
- Diesel particulate filter (DPF)
- Tachometer
- Electronic Safety and Stability Program (ESP)
- Rear electric windows, right and left (at the height of the 2nd row of seats)
- Ford Easy Fuel
- Heated windshield
- Rubberized luggage compartment floor mat
- Transmission: 8-speed automatic
- Heated rear windows
- Front interior lighting with delay function
- Paint finish: Solid
- Steering column, adjustable in height and reach
- Center console, front
- Emergency brake light
- Wheels: Tire repair kit
- Side protection strips, plastic
- Safety brake assist
- Automatic door locking mechanism (45 sec.)
- Seats: Seat package 45
- Start-stop system
- Concealed storage compartment on dashboard
- Power outlet: 12-volt connection in storage compartment on dashboard (driver's side)
- Daytime running light
- Partition wall: Grid partition wall
- Lashing eyes
- Heat-insulating glazing, lightly tinted
- Auxiliary electric heater (PTC), front
- Driver's side airbag
- Exterior mirrors, narrow mirror format
- Hill start assist
- On-board computer including outside temperature display
- Double rear doors with window
- Third brake light
- Fixed rear windows, right and left (at the height of the 3rd row of seats)
- Front electric windows
- FordPass Connect
- Warranty: 2-year Ford new car warranty including Ford Assistance mobility guarantee
- Glove compartment with lid
- Rear window wiper/washer system
- Front air conditioning including semi-electronic recirculation system
- Alternator/Generator
- Fog light
- Radio: Ford Audio System 2
- Sliding door, right and left
- Electro-mechanical power steering
- Front seat belts are height-adjustable
- Seats for passenger compartment: 2nd row of seats
- Front spoiler lip
- Dust and pollen filter
- Power outlet: 12-volt connection on the center console, front and rear
- Front bumper and rear bumper end caps painted in body color
- Child safety lock on sliding doors
- Electronic immobilizer (EPATS)
- Central locking with remote control



### Extra equipment

- 2 kg powder fire extinguisher
- Air conditioning with automatic temperature control (2 zones) (for driver and passenger side, separately adjustable)
- Anti-theft alarm system with interior monitoring (including double locking and 2 remote control keys)
- Eggers vehicle conversion
- Fog lights with static cornering lights
- Front and rear parking pilot system
- Radio: Ford Audio System 9 (Ford navigation system incl. Ford SYNC 3 with AppLink, 6" touchscreen radio (FM/AM), 2 USB ports, audio remote control on the steering wheel, Bluetooth hands-free system and audio streaming, emergency call assistant, SMS text-to-speech function, SMS sending function, voice control, reversing camera, phase diversity antenna, DAB/DAB+, acoustic and visual route guidance, road map for Europe, TMCpro live traffic, detailed 3D visualization, Michelin travel guide for Europe)
- Roof rails, aluminum (without crossbars)
- Transparent protective film for rear bumper
- Windows: Side windows from the 2nd row of seats and rear window, dark tinted.
- Adaptive cruise control (with intelligent speed limiter - including radar- and camera-based pre-collision assist with pedestrian and cyclist detection, lane keeping assist including lane keeping assist and driver drowsiness detection - including traffic sign recognition system - leather multifunction steering wheel with 4 spokes in aluminum trim)
- Electrically adjustable and heated exterior mirrors with blind spot assist (blind spot assist including cross traffic alert)
- Headlight assistant with day/night sensor including automatically dimming interior mirror (including headlight dimming with switch-off delay, windscreen wipers with rain sensor)
- Seats: Seat Package 6 (Fabric "Capitol/City" in Ebony (black) - Driver's seat, 3-way manually adjustable (forward/backward, height, backrest) - Front passenger single seat, 2-way adjustable (forward/backward/backrest) and foldable - Headrests, height adjustable - Seat heating driver, front passenger - Lumbar support, manual (driver) - Map pocket driver's seat - Seat belt warning system for driver, front passenger and 2nd row seats)
- Spare wheel: Steel wheel

### Brief expert findings

Documents submitted	At the time of the inspection, the vehicle registration certificate Part 2 (title) was available, but the vehicle registration certificate Part 1 (document) was not. (Copy)
VIN comparison	The vehicle identification number (VIN) was read from the vehicle and its conformity with the submitted documents was confirmed by the undersigned during the inspection.
Inspection	The inspection conditions were sufficient for the assessment of the vehicle. Lifting equipment and/or a pit were available for examining the vehicle.
Test drive	No test drive/shunting maneuver was carried out during the inspection of the vehicle.
Engine function test	An engine test run was performed.
readiness to drive	The vehicle was roadworthy at the time of inspection.

### Value reducing factors

No.	Component group	Description
1	Trim / covers	Floor mats - Damaged - Replace
2	Trim / covers	Door trim - front right side - Scratched - Loss in value
3	Door - rear left side	Door - dent(s) - Smooth repair work
4	Roof	Roof rail - right side - dent(s) - Smart repair
5	Rear bumper	Rear bumper (unpainted) - Deformed - Replace
6	Boot lid / rear door	Rear door - left side - Deformed - Repair and paint
7	Front bumper	Front bumper - Scratch(es) - Paint



## Wear and tear

No.	Component group	Description
1	Interior	Interior - Scratch(es) - No deduction
2	2nd wheel set	3 alloy rims - Scratched - No deduction
3	Vehicle glazing	Windscreen - Stone chips - No deduction

The vehicle shows signs of wear and tear commensurate with its age and use.

## Order/Scope of Order

An order was placed to prepare a sales report for the described vehicle. This report includes the following:

- Description of key vehicle information
- Documentation of equipment features  
(*Delivery by third-party service providers*)
- Documentation of damage, defects, missing parts
- Documentation of prior damage, unrepaired prior damage, repainting
- A brief visual or functional inspection of the equipment details, if possible.  
(*Functional testing of driver assistance systems is not included in the scope of services!*)
- a photographic documentation of the vehicle

## Basis for the order

This product is based on the guidelines for vehicle returns and valuations of light commercial vehicles published by Alphabet Fleet Management GmbH. The expert makes the specific findings in each individual case objectively, within the framework of the prescribed standards, based on their own expertise.

The vehicle inspection takes place in a fully assembled, unassembled state.

Damage or defects that can only be detected during disassembly/diagnostic work or through further investigation remain within the realm of prognostic risk. An increased risk exists due to concealed defects caused by fraudulent misrepresentation and which were not identifiable by the expert.

Damage or defects resulting from normal use or wear and tear of the vehicle will be accepted in accordance with the applicable standard.

There was no explicit identification or monetary consideration of the expected features within the product.

Features which, in their nature and extent, slightly exceed normal use but do not constitute unacceptable damage, will be documented and indicated as signs of wear, if applicable.

Damage or defects that, according to the applicable standard, can no longer be attributed to normal use or wear and tear are listed under "Value Reducing Factors" in the product description.

Depending on the product specification, a monetary ID can be provided. If this takes place, the costs can be 100% d or pro rata depending on the vehicle's age and mileage.

## Previous damages

No apparent prior damage that had been repaired could be found on the vehicle.

## Comments

- Winterradsatz ist kein Bestandteil des Auslieferungsumfangs.



Figure 1: Diagonal front (left)



Figure 2: Diagonal front (right)



Figure 3: Diagonal rear (left)



Figure 4: Diagonal rear (right)

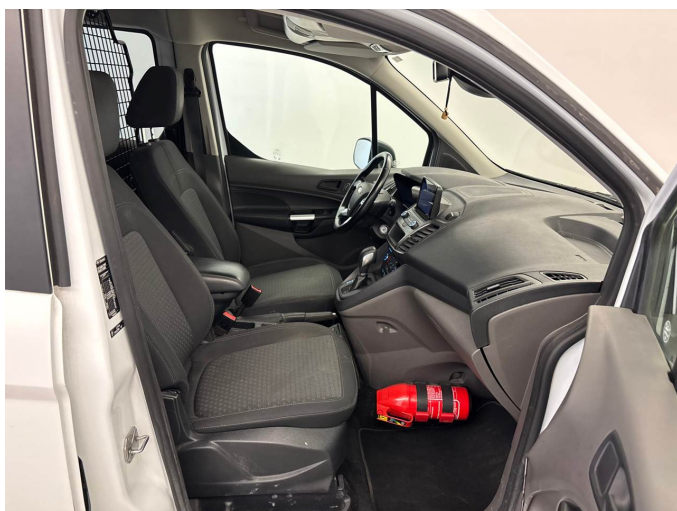


Figure 5: Interior - front



Figure 6: Interior - rear



Figure 7: Instrument cluster



Figure 8: Instrument panel



Figure 9: Interior 360° view



Figure 10: Cargo area



Figure 11: VIN



Figure 12: Mounted tyres



Figure 13: Documents



Figure 14: Additional tyres



Figure 15: Navigation



Figure 16: Misc.

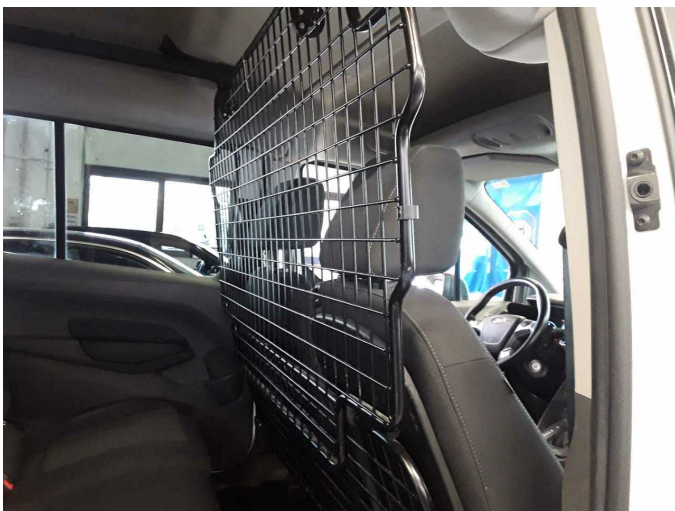


Figure 17: Misc.



Figure 18: Misc.



Figure 19: Misc.



Figure 20: Misc.



Figure 21: Misc.



Figure 22: Misc.



Figure 23: Misc.



Figure 24: Misc.



Figure 25: Misc.



Figure 26: Misc.



Figure 27: Misc.

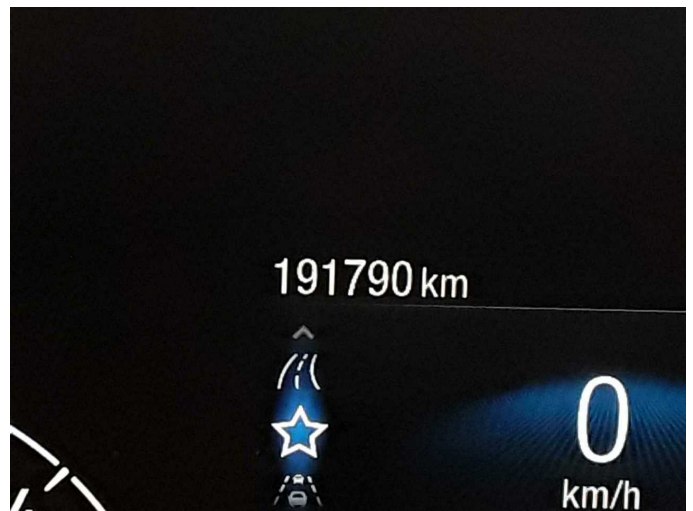


Figure 28: Misc.



Figure 29: Misc.



Damage 1: Trim / covers: Floor mats - Damaged - Replace



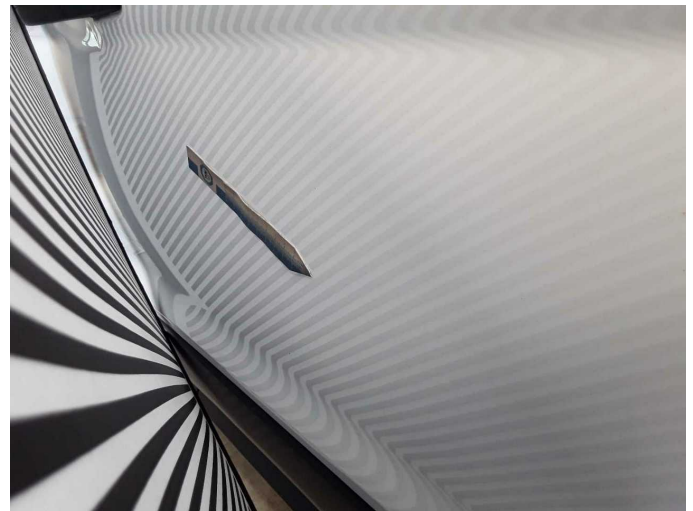
**Damage 2:** Trim / covers: Door trim - front right side - Scratched - Loss in value



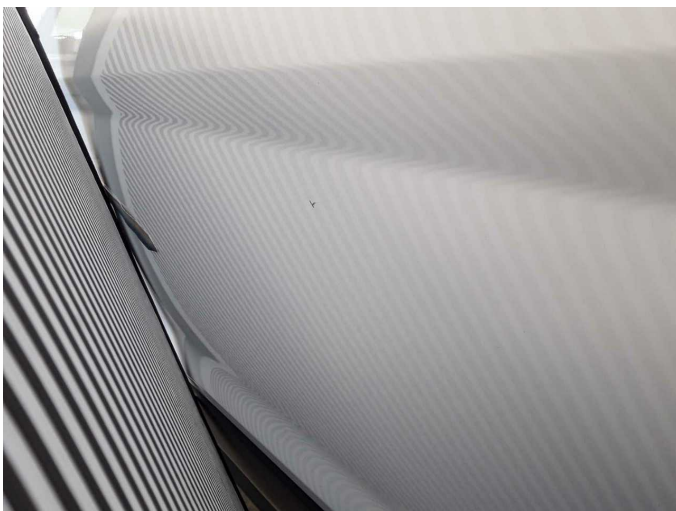
**Damage 2:** Trim / covers: Door trim - front right side - Scratched - Loss in value



**Damage 3:** Door - rear left side: Door - dent(s) - Smooth repair work



**Damage 3:** Door - rear left side: Door - dent(s) - Smooth repair work



**Damage 3:** Door - rear left side: Door - dent(s) - Smooth repair work



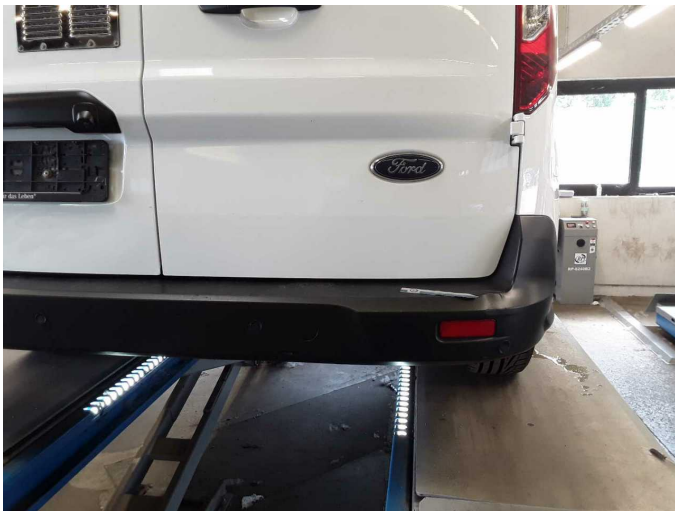
**Damage 4:** Roof: Roof rail - right side - dent(s) - Smart repair



**Damage 4:** Roof: Roof rail - right side - dent(s) - Smart repair



**Damage 4:** Roof: Roof rail - right side - dent(s) - Smart repair



**Damage 5:** Rear bumper: Rear bumper (unpainted) - Deformed - Replace



**Damage 5:** Rear bumper: Rear bumper (unpainted) - Deformed - Replace



**Damage 5:** Rear bumper: Rear bumper (unpainted) - Deformed - Replace



**Damage 6:** Boot lid / rear door: Rear door - left side - Deformed - Repair and paint



**Damage 6:** Boot lid / rear door: Rear door - left side - Deformed - Repair and paint



**Damage 6:** Boot lid / rear door: Rear door - left side - Deformed - Repair and paint



**Damage 7:** Front bumper: Front bumper - Scratch(es) - Paint



**Damage 7:** Front bumper: Front bumper - Scratch(es) - Paint



**Damage 7:** Front bumper: Front bumper - Scratch(es) - Paint



**Wear and tear 1:** Interior: Interior - Scratch(es) - No deduction



**Wear and tear 1:** Interior: Interior - Scratch(es) - No deduction



# Wartungshistorie

(gemäß Auftraggeber Informationen)

Fahrgestellnummer: WF07XXWPG7NY79070

Hersteller / Modell: FORD FORD Transit Connect 230 L2 LKW S&S Autm. Trend

Datum	KM-Stand	Beschreibung
24.03.2026	182.000	Keilriemen ern; Regelwartungsdienst; Reparatur Sonstiges; Wartung Sonstiges; Wasserpumpe ern; Zahnriemen/Steuerkett ern
08.01.2026	174.258	Bremsflüssigkeit; Kraftstofffilter ern; Luftfiltereinsatz ern; Motoröl b. Wartung; Ölfilter ern; Regelwartungsdienst; Wartung Sonstiges
14.08.2025	150.082	Bremse Sonstiges; Bremsklötze vorne; Bremsscheiben + Klötze v; Bremsscheiben vorne; Motoröl b. Wartung; Ölwechsel; Regelwartungsdienst
22.03.2025	127.586	Getriebeöl ern/prüfen; Kraftstofffilter ern; Luftfiltereinsatz ern; Motoröl b. Wartung; Ölfilter ern; Regelwartungsdienst; Reparatur Sonstiges; Systemtest/Eigendiagnose; Wartung Sonstiges; Wartung Sonstiges
05.09.2024	105.273	AU; Bremsscheiben + Klötze h; Motoröl b. Wartung; Regelwartungsdienst
17.04.2024	91.100	Bremsflüssigkeit; Bremsflüssigkeit ern; Kraftstofffilter ern; Luftfiltereinsatz ern; Motoröl b. Wartung; Ölfilter ern; Regelwartungsdienst; Systemtest/Eigendiagnose; Wartung Sonstiges
27.11.2023	76.480	Bremse Sonstiges; Bremsklötze vorne; Bremsscheiben + Klötze v; Bremsscheiben vorne; Motoröl b. Wartung; Ölfilter ern; Regelwartungsdienst; Wartung Sonstiges; Wartung Sonstiges
21.06.2023	48.207	Kraftstofffilter ern; Luftfiltereinsatz ern; Motoröl b. Wartung; Ölfilter ern; Regelwartungsdienst; Wartung Sonstiges; Wartung Sonstiges
23.12.2022	23.547	Motoröl b. Wartung; Ölfilter ern; Regelwartungsdienst; Wartung Sonstiges; Wartung Sonstiges