

Expertise

Protocol number: 46269772
Order No. / Reference: 26472782
Inspection date: 30 Jun 2026

Manufacturer: Opel

Model: Mokka-e Elegance

VIN: VXXKUKZKXZNW082346



Vehicle details

Manufacturer / Type / Model / Equipment

Opel Mokka-e Elegance

Vehicle Identification number VXXKUKZKXZNW082346

Mileage (Read) 31,536 km

First registration 25 Nov 2022

Number of holders 1

Power / Engine displacement 57 kw /

Fuel type / Cylinder Electric / 0

Gearbox / Number of gears Direct drive / 1

Type of drive Front drive

Type of vehicle SUV

Colour / colour code Jade Weiß

Doors / Seats 5 / 5

Upholstery type Cloth / leather
combination

Colour of upholstery Grey-Black



Vehicle details			
Maintenance booklet / proof	Available / complete	Next maintenance in	4 Monat(e)
Last service on / at	10/2024 at 19,219 km		
Key is / should be	2 / 2	FZG documents	ZB#2 (B) was available (copy), ZB#1 (S) was not available.
		Letter No.	GN188001
Previous damage / Accident	None detectable	Repainting	None detectable
Inspection conditions	sufficient	Lifting equipment / pit	yes
Test drive	Not performed	Engine function test	Performed
Manufacturer key number/ type code number	1889 / ADD 00021		
Emission standard	2017/1151;WLTP;reine Elektrofz	fine dust sticker	
Permitted total weight	2,015 kg	Empty weight	

Tyres

Mounted tyres				
#	Tyre size	Type of tyre	Manufacturer	Tread depth
1)	215/60 R17 96H	Summer tyres on Light alloy	Continental	4mm / 4mm
2)	215/60 R17 96H	Summer tyres on Light alloy	Continental	5mm / 5mm

Replacement				
Typ	Tyre size	Type of tyre	Manufacturer	Tread depth
	Tirefit	Expiration date 03/2028		

Legend: Tread depth information for the left tire is listed first, for the right tire it is listed second on the axle in the direction of travel.



Equipment

Standard equipment

- 2 ignition keys, with remote control
- Storage compartments
- Driver and passenger side airbags
- Airbag: Head airbags, front and rear outer
- Active Pedestrian Warning System (AVAS)
- Exterior mirrors in black
- Exterior mirrors, electrically adjustable and heated, manually foldable
- Hill Start Assist
- Roof design line in chrome
- Roof spoiler, black
- Third brake light
- Electronic Stability Program Plus (ESP Plus)
- Chassis: Driving modes
- Front collision warning with automatic city emergency braking and pedestrian detection
- Transmission: Automatic electric drive with fixed gear ratio
- rear window wiper
- Child safety lock in the rear doors, manual
- Front headrests and 3 rear headrests, height adjustable
- LED headlights
- Steering column, height and tilt adjustable
- Reading lights, front
- Center armrest, front
- Multi-collision brake
- Fatigue detection
- Parkpilot, rear parking aid, with acoustic warning signal when reversing.
- Radio: Multimedia Radio
- Wheels: Light alloy (4) 5 double spokes 6.5 J x 17 in BiColor Black
- "Mokka" lettering on the rear in chrome
- Speed-sensitive power steering
- Visibility equipment
- Seats: Driver's seat 6-way manually adjustable
- Seats: Rear seat backrest foldable in a 60:40 ratio
- Lane Keeping Assist
- Start/Stop System
- Traction control with engine and brake intervention TC Plus
- Underride protection look, front and rear, in silver
- Immobiliser
- Tinted heat-insulating glazing
- Storage: Pockets on the back of the front seats
- Adaptive brake light
- Airbag: Front and side airbags
- Actively controlled air intakes (Active Aero Shutter)
- Anti-lock braking system (ABS) with cornering brake control and brake assist
- Battery charging kit: Mode 2 charging cable (1.8 kW) for household socket and battery charging status indicator
- Braking system: Regenerative
- Headliner, Grey
- Decorative strips, silver
- Electronic brake force distribution (EBD)
- "Mokka-e" emblem on tailgate
- Electric windows front and rear
- Pedestrian protection
- Cruise control with intelligent speed limiter
- Heated rear window
- Rear shelf
- automatic climate control
- Charging options
- Steering wheel: Leather steering wheel, flattened at the bottom
- Makeup mirror in sun visor, driver and front passenger
- Mode 2 charging cable
- myOpel App
- Onboard charger (vehicle-integrated charging unit), 3-phase (11 kW)
- Upholstery: Fabric/Premium leather look
- Tire pressure warning
- Wheels: Tire repair kit
- Keyless Start system
- Side impact protection
- Seat belts
- Seats: Passenger seat 6-way manually adjustable
- Seats: Comfort seats, front
- Seats: Pre-installation for ISOFIX child seat mounting system, front passenger seat and rear outer seats
- 12-volt power outlet
- Ambient lighting
- Traffic sign recognition
- heat pump
- Central locking with remote control



Extra equipment

- Active Drive Assist Plus (Automatic Speed Assist with Stop & Go function - Front Collision Warning with automatic emergency braking as well as pedestrian and cyclist detection - Active Lane Keeping Assist)
- Floor mats, velour, 4-piece set
- Paint finish: Solid
- Park & Go (Park Pilot, front and rear parking aid with audiovisual warning - 180-degree panoramic reversing camera - blind spot warning and side protection - electrically folding exterior mirrors - ambient lighting - LED fog lights)
- Seats: Heated seats, driver and front passenger
- Heated leather steering wheel
- Mode 3 charging cable (11 kW, 3-phase) for public charging, 6 meters long
- Radio: Multimedia Navi (Mokka-e) (with 7" color touchscreen display and fully digital 7" driver information display - navigation system with integrated memory - road map of Europe (including Russia and Turkey) - 3D map display - dynamic route guidance via map and/or arrow display - display of points of interest - trip planning - GPS module - display of charging stations. OpelConnect, including LIVE navigation services: - map updates (via USB) - voice control for audio, telephone and navigation - radio, Bluetooth, DAB+, USB, hands-free calling.)

Brief expert findings

Documents submitted	At the time of the inspection, the vehicle registration certificate Part 2 (title) was available, but the vehicle registration certificate Part 1 (document) was not. (Copy)
VIN comparison	The vehicle identification number (VIN) was read from the vehicle and its conformity with the submitted documents was confirmed by the undersigned during the inspection.
Inspection	The inspection conditions were sufficient for the assessment of the vehicle. Lifting equipment and/or a pit were available for examining the vehicle.
Test drive	No test drive/shunting maneuver was carried out during the inspection of the vehicle.
Engine function test	An engine test run was performed.

Value reducing factors

No.	Component group	Description
1	Rear bumper	Rear bumper - Scratch(es) - Smart repair
2	Trim / covers	A-pillar - trim - interior, left side - Damaged - Replace
3	Door - rear right side	Door - Scratch(es) - Paint

Wear and tear

No.	Component group	Description
1	Front bumper	Front bumper - Stone chips - No deduction
2	Vehicle glazing	Windscreen - Stone chips - No deduction
3	Wheel / tyres	Alloy rim - rear left side - Scratch(es) - No deduction

The vehicle shows signs of wear and tear commensurate with its age and use.

Order/Scope of Order

An order was placed to prepare a sales report for the described vehicle. This report includes the following:

- Description of key vehicle information
- Documentation of equipment features
(*Delivery by third-party service providers*)
- Documentation of damage, defects, missing parts
- Documentation of prior damage, unrepaired prior damage, repainting
- A brief visual or functional inspection of the equipment details, if possible.
(*Functional testing of driver assistance systems is not included in the scope of services!*)
- a photographic documentation of the vehicle



Basis for the order

This product is based on the guidelines for vehicle returns and valuations published by Alphabet Fleet GmbH. The expert makes the specific findings in each individual case objectively, within the framework of the prescribed standards, based on their own expertise.

The vehicle inspection takes place in a fully assembled, unassembled state.

Damage or defects that can only be detected during disassembly/diagnostic work or through further investigation remain within the realm of prognostic risk. An increased risk exists due to concealed defects caused by fraudulent misrepresentation and which were not identifiable by the expert.

Damage or defects resulting from normal use or wear and tear of the vehicle will be accepted in accordance with the applicable standard.

There was no explicit identification or monetary consideration of the expected features within the product.

Features which, in their nature and extent, slightly exceed normal use but do not constitute unacceptable damage, will be documented and indicated as signs of wear, if applicable.

Damage or defects that, according to the applicable standard, can no longer be attributed to normal use or wear and tear are listed under "Value Reducing Factors" in the product description.

Depending on the product specification, a monetary ID can be provided. If this takes place, the costs can be 100% d or pro rata depending on the vehicle's age and mileage.

Previous damages

No apparent prior damage that had been repaired could be found on the vehicle.



Figure 1: Diagonal front (left)



Figure 2: Diagonal front (right)



Figure 3: Diagonal rear (left)



Figure 4: Diagonal rear (right)



Figure 5: Interior - front



Figure 6: Interior - rear



Figure 7: Instrument cluster



Figure 8: Instrument panel



Figure 9: Interior 360° view



Figure 10: Cargo area

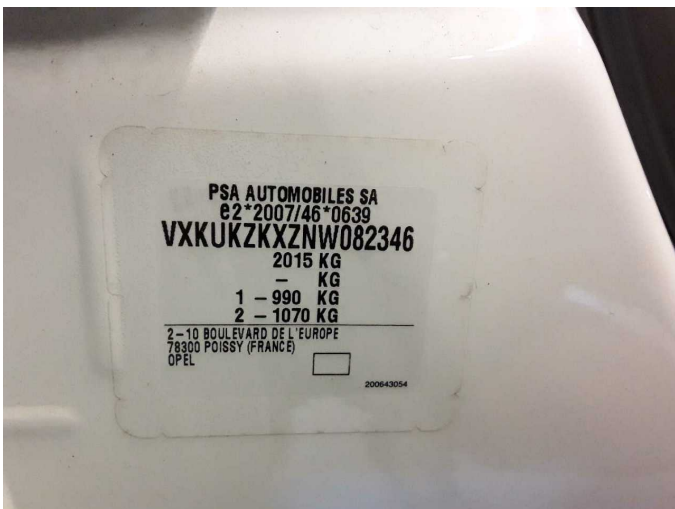


Figure 11: VIN



Figure 12: Mounted tyres



Figure 13: Documents

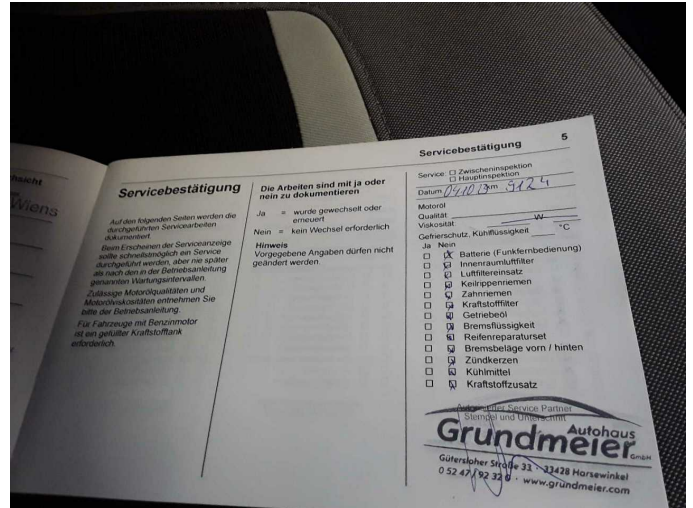


Figure 14: Documents

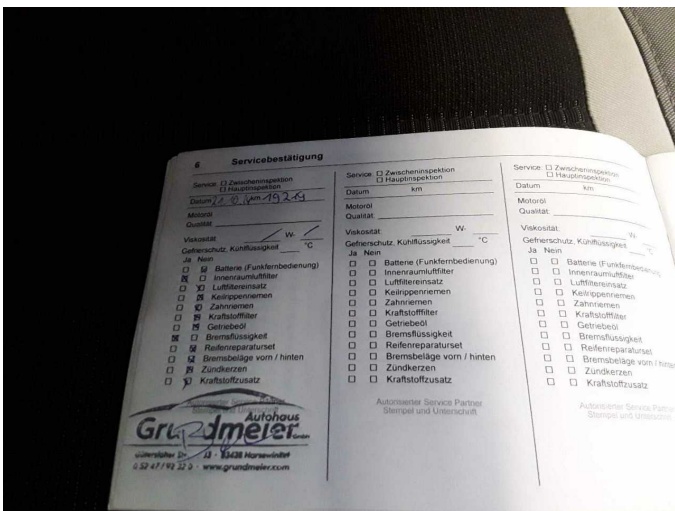


Figure 15: Documents



Figure 16: Navigation

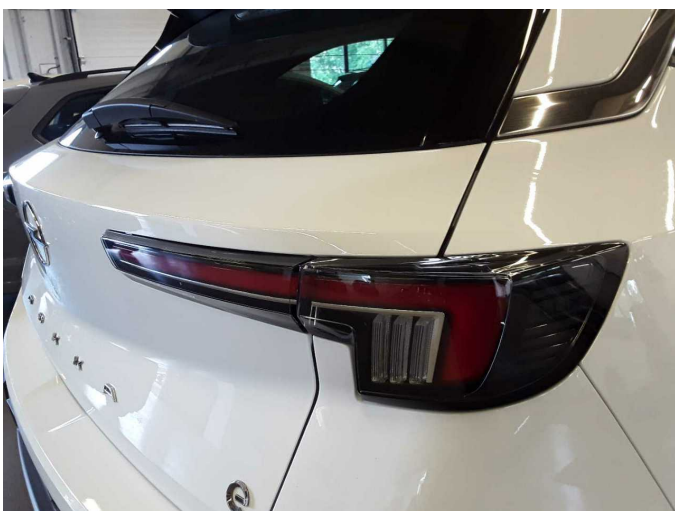


Figure 17: Misc.

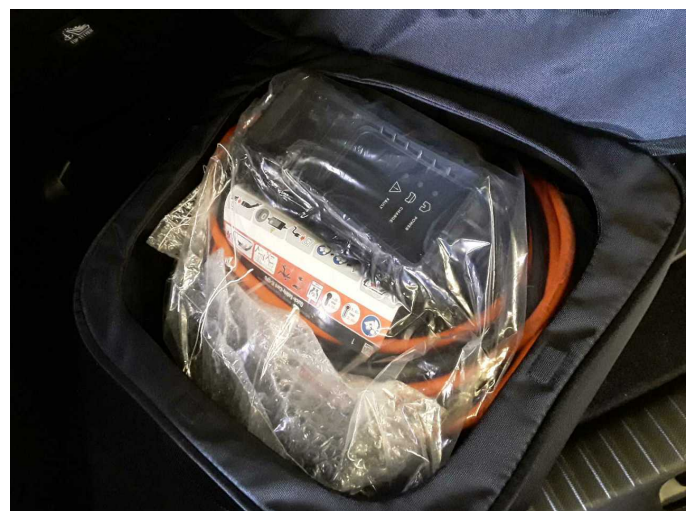


Figure 18: Misc.



Figure 19: Misc.



Figure 20: Misc.



Figure 21: Misc.

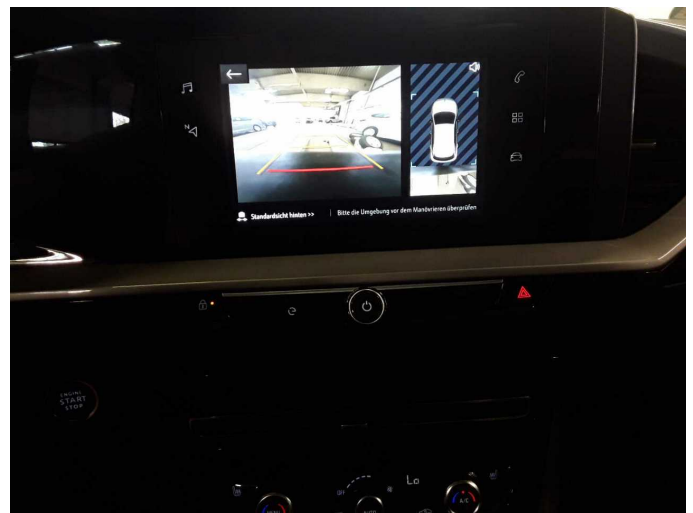


Figure 22: Misc.



Figure 23: Misc.

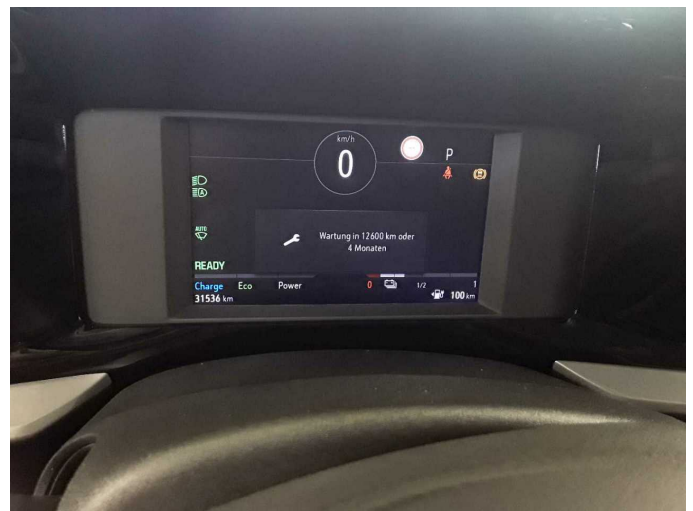


Figure 24: Misc.



Figure 25: Misc.



Figure 26: Misc.



Figure 27: Misc.



Figure 28: Misc.



Damage 1: Rear bumper: Rear bumper - Scratch(es) - Smart repair



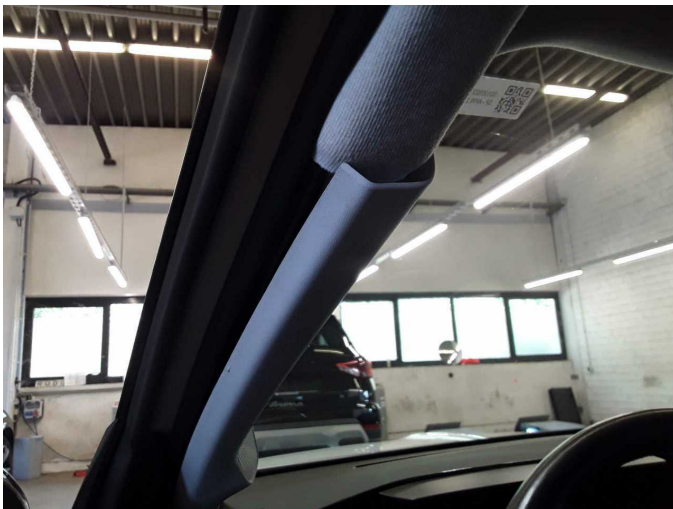
Damage 1: Rear bumper: Rear bumper - Scratch(es) - Smart repair



Damage 1: Rear bumper: Rear bumper - Scratch(es) - Smart repair



Damage 2: Trim / covers: A-pillar - trim - interior, left side - Damaged - Replace



Damage 2: Trim / covers: A-pillar - trim - interior, left side - Damaged - Replace



Damage 3: Door - rear right side: Door - Scratch(es) - Paint



Damage 3: Door - rear right side: Door - Scratch(es) - Paint



Wear and tear 1: Front bumper: Front bumper - Stone chips - No deduction



Wear and tear 1: Front bumper: Front bumper - Stone chips - No deduction



Wear and tear 2: Vehicle glazing: Windscreen - Stone chips - No deduction



Wear and tear 2: Vehicle glazing: Windscreen - Stone chips - No deduction



Wear and tear 3: Wheel / tyres: Alloy rim - rear left side - Scratch(es) - No deduction



Wear and tear 3: Wheel / tyres: Alloy rim - rear left side - Scratch(es) - No deduction