

Expertise

Protocol number: 45988887
Order No. / Reference: 26406286
Inspection date: 16 Jun 2026

Manufacturer: Audi

Model: A6 Avant 40 TDI S tronic

VIN: WAUZZZF24RN000896



Vehicle details

Manufacturer / Type / Model / Equipment

Audi A6 Avant 40 TDI S tronic

Vehicle Identification number WAUZZZF24RN000896

Mileage (Read) 142,384 km

First registration 5 Oct 2023

Number of holders 1

Power / Engine displacement 150 kw / 1,968 ccm

Fuel type / Cylinder Hybrid Diesel / E / 4

Gearbox / Number of gears Automatic / 7

Type of drive Front drive

Type of vehicle Station wagon

Colour / colour code MythosSchwarz Metallic

Doors / Seats 5 / 5

Upholstery type Leather

Colour of upholstery Brown



Vehicle details			
Maintenance booklet / proof	digital proof / complete	Next maintenance in	18,000 km
Last service on / at	02/2026 at 130,367 km		
Key is / should be	2 / 2	FZG documents	ZB#2 (B) was available (copy), ZB#1 (S) was not available.
		Letter No.	GV354877
Previous damage / Accident	Detectable	Repainting	Detectable
Inspection conditions	sufficient	Lifting equipment / pit	yes
Test drive	Not performed	Engine function test	Performed
Manufacturer key number/ type code number	0588 / BSZ 02535		
Emission standard	EURO6;WLTP;AP;PI/CI; M, N1 I	fine dust sticker	
Permitted total weight	2,330 kg	Empty weight	

Tyres

Mounted tyres				
#	Tyre size	Type of tyre	Manufacturer	Tread depth
1)	225/55 R18 102Y	Summer tyres on Light alloy	Pirelli	5mm / 5mm
2)	225/55 R18 102Y	Summer tyres on Light alloy	Pirelli	5mm / 5mm
Additional tyres				
#	Tyre size	Type of tyre	Manufacturer	Tread depth
1)	225/60 R17 103V	Winter tyres on Light alloy	Pirelli	5mm / 5mm
2)	225/60 R17 103V	Winter tyres on Light alloy	Pirelli	5mm / 5mm
Replacement				
Typ	Tyre size	Type of tyre	Manufacturer	Tread depth
	Tirefit	Expiration date 07/2028		

Legend: Tread depth information for the left tire is listed first, for the right tire it is listed second on the axle in the direction of travel.



Equipment

Standard equipment

- AdBlue tank (12 liters)
- Airbag: Front side airbags and head airbag system
- Audi connect navigation & infotainment
- Audi drive select
- Audi pre sense front
- Exterior mirror housings in body color
- third brake light
- Decorative inlays, fine lacquer, graphite grey
- Tachometer
- Parking aid plus with surround view
- Electronic Stability Control (ESC)
- Luggage compartment lid, electrically opening and closing
- Transmission: S tronic 7-speed
- Interior mirror dimming
- Comfort center armrest in front
- Headrests (4)
- Manual steering wheel adjustment
- Non-smoking version
- Wheel: Tire pressure monitoring system
- Radio: MMI Radio plus with MMI touch response
- Rail system with fixing set
- Seats: Split-folding rear seat backrest Avant
- Lane Departure Warning
- First aid kit including warning triangle and high-visibility vests
- Camera-based traffic sign recognition
- Electronic immobilizer
- Central locking
- Airbag for driver and front passenger
- Anti-lock braking system (ABS)
- Audi connect emergency call & service m.connect remote & control
- Audi virtual cockpit plus
- Vehicle tool kit
- Fabric headliner
- Diesel particulate filter (DPF) with nitrogen oxide catalyst and AdBlue tank
- Door sills with aluminum inlay front and rear
- key fob
- Cruise control system with speed limiter
- Interior lighting
- ISOFIX child seat attachment and Top Tether for the outer rear seats
- LED headlights
- MMI navigation with MMI touch response
- Progressive steering
- Wheel: Tire repair kit
- Radio accessories: 8 speakers (passive) front and rear
- Seats: Standard front seats
- Sun visor on driver and passenger side
- Start-stop system
- Glazing: Windscreen in heat-insulating glazing
- Glazing: Rear window, rear door and side windows in clear glass
- Thermal insulation glazing on the sides and rear



Extra equipment

- AdBlue tank with increased filling volume (AdBlue tank with 22 liter filling volume - for diesel vehicles with SCR technology, to reduce nitrogen oxides in the exhaust gas)
- Business Package (Assistance Package Tour (adaptive speed assist, efficiency assist, turn assist, evasive steering assist, emergency assist) - 4-zone automatic climate control - heated front seats - Audi phone box - automatically dimming interior mirror - automatically dimming exterior mirrors - adaptive windscreen wipers with integrated washer nozzles - high-beam assist)
- Control buttons in glossy black with haptic feedback and aluminum-look interior (control button strip in the center console and light buttons in glossy black, control button and light button strip with haptic feedback - light button strip including proximity sensor - control buttons for driver assistance systems, buttons for parking brake, auto-hold function, central locking front and rear, rear locking, frame around the interior door handles and window regulators in aluminum look)
- Front seat heating (heats seat and backrest center panels; with leather upholstery, sport seats and sport seats plus also seat side bolsters - individually adjustable in multiple stages for driver and front passenger side via the climate control unit)
- Fuel tank (73 liters) (fuel tank for 73 liters of gasoline/diesel fuel)
- Package: Ambient lighting package plus (contour lighting front/rear doors, color-matched - ambient fabric lighting front/rear doors, color-matched - ambient lighting front center console, color-matched - contour lighting front center console, color-matched - contour lighting with illuminated quattro lettering (for all-wheel drive) on the instrument panel on the passenger side, color-matched - ambient lighting of the instrument panel)
- Reversing camera (The reversing camera displays the area behind the vehicle on the upper display. Dynamic display elements such as a steering angle-dependent lane calculation assist with parking or maneuvering.)
- Steering wheel: Double-spoke leather steering wheel with multifunction, paddle shifters and steering wheel heating (paddle shifters allow manual gear changes. The steering wheel rim is also heated).
- Telephone: Preparation for smartphone interface (Preparation for subsequent booking of the smartphone interface via Functions on Demand.)
- Assistance Package Tour (Adaptive Driving Assistant, Adaptive Speed Assistant provides support within system limits for acceleration, braking, and maintaining speed and distance with Lane Keeping Assist - Efficiency Assistant - Turning Assistant, monitors the oncoming lane using data from the radar sensor and front camera as soon as the turn signal is activated - Evasive Steering Assist, helps the driver steer the vehicle around an obstacle in a critical situation - Emergency Assist)
- Deletion of model designation and performance/technology lettering
- Electrically adjustable, heated and folding exterior mirrors, automatically dimming on both sides (including curb view function for the passenger-side exterior mirror with integrated LED turn signal, including heated windshield washer nozzles, aspherical mirror glass. The curb view function tilts the passenger-side exterior mirror downwards when reverse gear is engaged, providing the driver with a better view of the curb.)
- High beam assist (within the system's limits, it automatically detects oncoming headlights, taillights of other road users, and built-up areas. Depending on the traffic situation, the high beam is automatically switched on or off.)
- Package: Storage package (2 cup holders in the rear center armrest, luggage compartment net for fixing to the lashing eyes on the luggage compartment floor)
- Paint finish: Metallic
- Radio accessories: Audi sound system (10 speakers including center speaker and subwoofer - 6-channel amplifier - total output of 180 watts)
- Radio accessories: DVD drive (DVD drive installed in the glove compartment, plays MP3, WMA and AAC files)
- Seat covers in leather/mono.pur 550 combination (for standard front seats without seat ventilation) (center panels of the front seats and the two outer rear seats, as well as the driver's side side bolster in the entry area, in leather - side bolsters, headrests, front center armrest, and middle rear seat in mono.pur 550 synthetic leather - with black leather, contrast stitching in rock gray; with okapi brown leather, contrast stitching in steel gray; with pearl beige leather, contrast stitching in agate gray)
- Wheel: Alloy wheels 5-double-arm design (8 J x 18 with tires 225/55 R 18)



Brief expert findings

Documents submitted	At the time of the inspection, the vehicle registration certificate Part 2 (title) was available, but the vehicle registration certificate Part 1 (document) was not. (Copy)
VIN comparison	The vehicle identification number (VIN) was read from the vehicle and its conformity with the submitted documents was confirmed by the undersigned during the inspection.
Inspection	The inspection conditions were sufficient for the assessment of the vehicle. Lifting equipment and/or a pit were available for examining the vehicle.
Test drive	No test drive/shunting maneuver was carried out during the inspection of the vehicle.
Engine function test	An engine test run was performed.

Value reducing factors

No.	Component group	Description
1	Front bumper	Front bumper - Scratch(es) - Paint

Previous damages

No.	Previous damage	Extent of damage (Net)
1	Side - left, Provided by user / customer, from 17 Mar 2025	6.688,25 €

Repainting

No.	Repainting
1	Side panel - rear left side, Door - front left side, Professionally carried out, Invoice of repair done Non-existent

Paint coat thickness measurement

Side panel - rear left side	224 µm	Door - front left side	174 µm
-----------------------------	--------	------------------------	--------

Order/Scope of Order

An order was placed to prepare a sales report for the described vehicle. This report includes the following:

- Description of key vehicle information
- Documentation of equipment features
(Delivery by third-party service providers)
- Documentation of damage, defects, missing parts
- Documentation of prior damage, unrepaired prior damage, repainting
- A brief visual or functional inspection of the equipment details, if possible.
(Functional testing of driver assistance systems is not included in the scope of services!)
- a photographic documentation of the vehicle



Basis for the order

This product is based on the guidelines for vehicle returns and valuations published by Alphabet Fleet GmbH. The expert makes the specific findings in each individual case objectively, within the framework of the prescribed standards, based on their own expertise.

The vehicle inspection takes place in a fully assembled, unassembled state.

Damage or defects that can only be detected during disassembly/diagnostic work or through further investigation remain within the realm of prognostic risk. An increased risk exists due to concealed defects caused by fraudulent misrepresentation and which were not identifiable by the expert.

Damage or defects resulting from normal use or wear and tear of the vehicle will be accepted in accordance with the applicable standard.

There was no explicit identification or monetary consideration of the expected features within the product.

Features which, in their nature and extent, slightly exceed normal use but do not constitute unacceptable damage, will be documented and indicated as signs of wear, if applicable.

Damage or defects that, according to the applicable standard, can no longer be attributed to normal use or wear and tear are listed under "Value Reducing Factors" in the product description.

Depending on the product specification, a monetary ID can be provided. If this takes place, the costs can be 100% d or pro rata depending on the vehicle's age and mileage.

Previous damages

According to available information previous damages were repaired at the vehicle. Traces of repairs, which allow conclusions about the area of repair, were not recognizable during the inspection.

Comments

Wartungshistorie gemäß Auftraggeber Informationen.

Der beiliegende Radsatz gehört nicht zur Ausstattung.

ALPHABET



Figure 1: Diagonal front (left)

ALPHABET



Figure 2: Diagonal front (right)

ALPHABET



Figure 3: Diagonal rear (left)

ALPHABET



Figure 4: Diagonal rear (right)



Figure 5: Interior - front



Figure 6: Interior - rear



Figure 7: Instrument cluster



Figure 8: Instrument panel



Figure 9: Interior 360° view



Figure 10: Cargo area

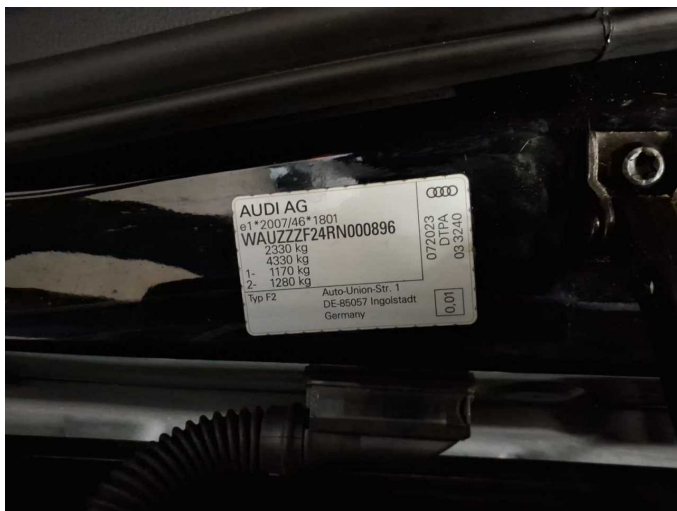


Figure 11: VIN



Figure 12: Mounted tyres



Figure 13: Documents



Figure 14: Additional tyres



Figure 15: Navigation



Figure 16: Misc.



Figure 17: Misc.

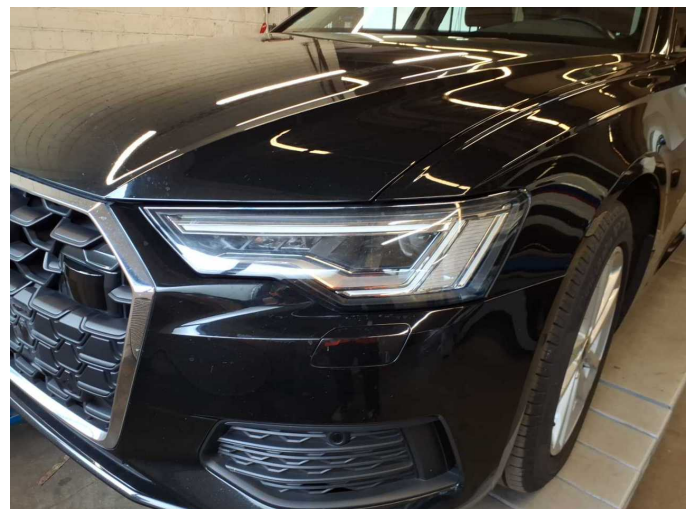


Figure 18: Misc.



Figure 19: Misc.



Figure 20: Misc.



Figure 21: Misc.



Figure 22: Misc.

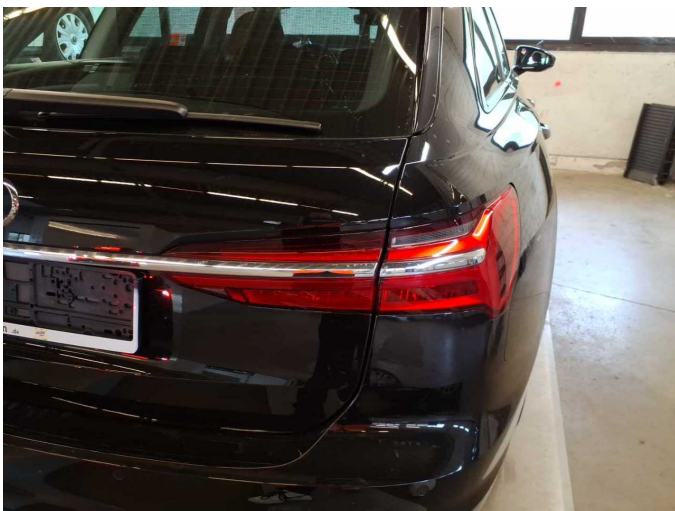


Figure 23: Misc.



Figure 24: Misc.



Figure 25: Misc.



Figure 26: Misc.



Figure 27: Misc.



Figure 28: Misc.



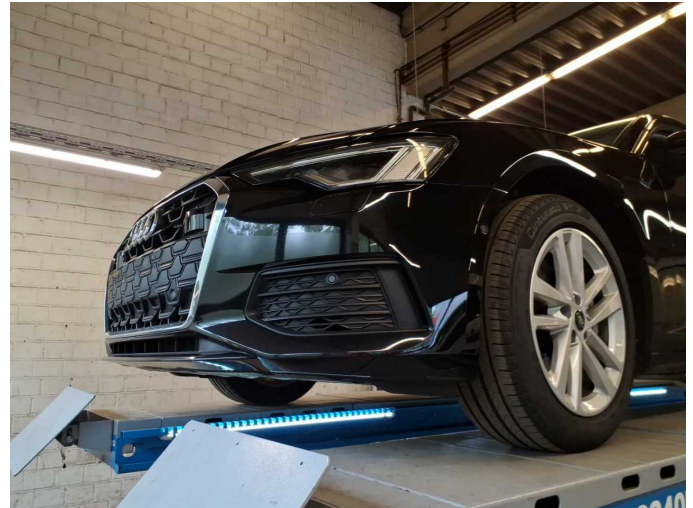
Figure 29: Misc.



Figure 30: Misc.



Figure 31: Misc.



Damage 1: Front bumper: Front bumper - Scratch(es) - Paint



Damage 1: Front bumper: Front bumper - Scratch(es) - Paint



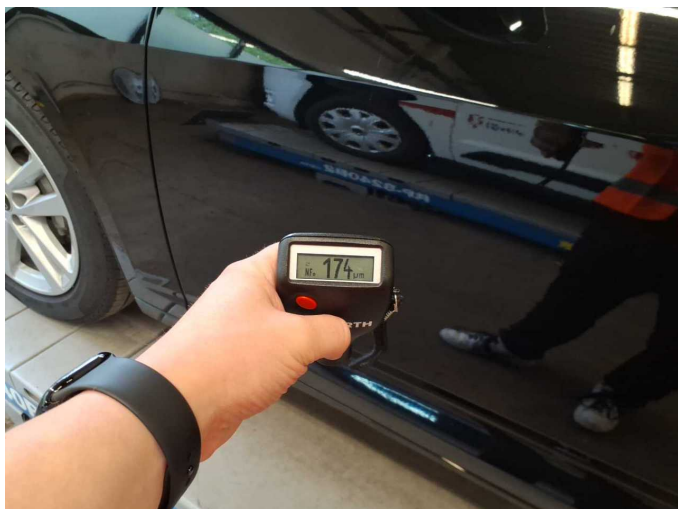
Damage 1: Front bumper: Front bumper - Scratch(es) - Paint



Damage 1: Front bumper: Front bumper - Scratch(es) - Paint



Repainting 1: Side panel - rear left side, Door - front left side



Repainting 1: Side panel - rear left side, Door - front left side



Wartungshistorie

(gemäß Auftraggeber Informationen)

Fahrgestellnummer: WAUZZZF24RN000896
Hersteller / Modell: AUDI AUDI A6 Avant 40 TDI S tronic

Datum	KM-Stand	Beschreibung
26.02.2026	130.367	Getriebeöl ern/prüfen; Kraftstofffilter ern; Motoröl b. Wartung; Ölfilter ern; Regelwartungsdienst; Reparatur Sonstiges; Systemtest/Eigendiagnose; Wartung Sonstiges
01.08.2025	96.300	Bremsbelagfühler ern; Bremse Sonstiges; Bremsklötze vorne; Bremsscheiben vorne
28.07.2025	95.597	Bremsflüssigkeit; Bremsflüssigkeit ern; Luftfiltereinsatz ern; Motoröl b. Wartung; Ölfilter ern; Regelwartungsdienst; Wartung Sonstiges
17.12.2024	61.080	Getriebeöl ern/prüfen; Kraftstofffilter ern; Motoröl b. Wartung; Ölfilter ern; Regelwartungsdienst; Reparatur Sonstiges; Wartung Sonstiges
06.06.2024	31.420	Motoröl b. Wartung; Ölfilter ern; Regelwartungsdienst; Wartung Sonstiges