

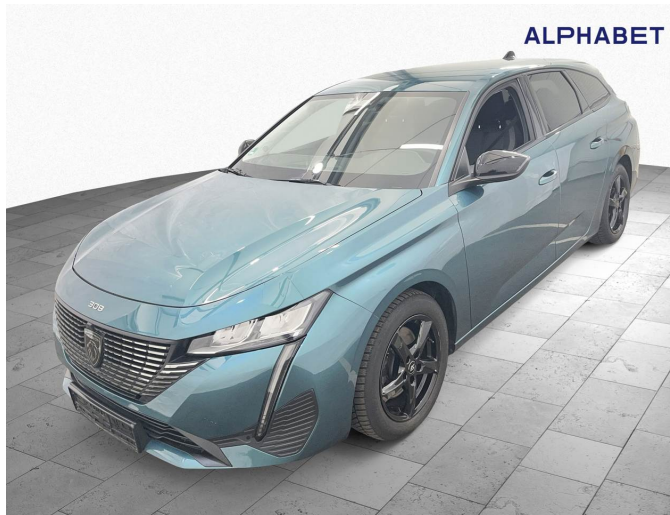
Expertise

Protocol number: 45806735
Order No. / Reference: 26382615
Inspection date: 20 May 2026

Manufacturer: Peugeot

Model: 308 SW BlueHDi 130 Allure

VIN: VR3FCYHZLNY597240



Vehicle details

Manufacturer / Type / Model / Equipment

Peugeot 308 SW BlueHDi 130 Allure

Vehicle Identification number VR3FCYHZLNY597240

Mileage (Read) 68,225 km

First registration 16 Feb 2023

Number of holders 1

Next periodical technical inspection 03/2028
(Report on hand)

Power / Engine displacement 96 kw / 1,499 ccm

Fuel type / Cylinder Diesel / 4

Gearbox / Number of gears Manual / 6

Type of drive Front drive

Type of vehicle Station wagon

Colour / colour code Avatar Blau Metallic

Doors / Seats 5 / 5

Upholstery type Cloth

Colour of upholstery Black-Anthracite

Vehicle with smoke odor no



Vehicle details

Maintenance booklet / proof	digital proof / complete	Next maintenance in	27,200 km
Last service on / at	03/2026 at 65,468 km		
Key is / should be	2 / 2	FZG documents	ZB#2 (B) was available (copy), ZB#1 (S) was not available.
		Letter No.	GC911032
Previous damage / Accident	None detectable	Repainting	None detectable
Inspection conditions	sufficient	Lifting equipment / pit	No
Test drive	Not performed	Engine function test	Performed
Manufacturer key number/ type code number	1889 / AEI 00026		
Emission standard	EURO6;WLTP;AP;PI/CI; M, N1 I	fine dust sticker	
Permitted total weight	1,920 kg	Empty weight	

Tyres

Mounted tyres

#	Tyre size	Type of tyre	Manufacturer	Tread depth
1)	205/55 R16 94H	Winter tyres on Light alloy	Dunlop	6mm / 6mm
2)	205/55 R16 94H	Winter tyres on Light alloy	Dunlop	6mm / 6mm

Additional tyres

#	Tyre size	Type of tyre	Manufacturer	Tread depth
1)	225/45 R17 94V	Summer tyres on Light alloy	Michelin	5mm / 5mm
2)	225/45 R17 94V	Summer tyres on Light alloy	Michelin	6mm / 6mm

Legend: Tread depth information for the left tire is listed first, for the right tire it is listed second on the axle in the direction of travel.



Equipment

Standard equipment

- Storage compartment: Illuminated glove compartment
- Active Safety Brake
- Airbags (6)
- Exterior mirror caps in Perla Nera Black
- Trim panel between the taillights in high-gloss black
- On-board computer
- Decorative fabric inserts "Texa" for door panels and dashboard
- Front and rear parking assistance, acoustic and visual
- Driving mode selector "Eco"
- High beam assist
- Follow-me-home function (automatic)
- Laminated glass windshield, noise-reducing
- Cruise control system with speed limiter
- Cup holder in the center console
- rear window wiper
- Interior mirror automatically dimming
- Keyless system
- Automatic climate control (2-zone), with activated carbon filter
- Paint finish: Metallic Avatar Blue
- LED ceiling lighting at the front
- LED daytime running lights
- light sensor
- Armrest - centre, rear
- Multifunctional touchscreen with 10" HD color display
- Multimedia: Mirror Screen
- Navigation system: PEUGEOT i-Connect Advanced
- Particulate filter: FAP diesel particulate filter
- Break warning
- Upholstery: Fabric/faux leather
- Tire pressure monitoring system
- Reversing camera with 180° surround view
- Electric power steering
- Seats: Passenger seat height adjustable
- Seats: Manual lumbar support for driver
- Seats: Rear seats
- Seats: Front seats
- 12-volt socket
- Doors lock automatically when driving off
- Traffic sign recognition
- Central locking system, activatable from inside via remote control

Extra equipment

- Package: Drive Assist Package (Rear Cross Traffic Alert - Rear Cross Traffic Alert - Adaptive Cruise Control ACC - Blind Spot Assist with long range up to 75 meters in reverse)

- ABS (Anti-lock Braking System) with electronic brake force distribution
- Electrically adjustable, heated and folding exterior mirrors
- Hill start assist
- Turn signals with lane change indicator function
- third brake light
- Tachometer
- Eco-LED headlights
- Electronic Stability Program (ESP)
- Electric windows, front and rear
- electric parking brake
- Front collision warning
- luggage compartment roller blind
- Transmission: 6-speed manual transmission
- Heated rear window
- Rear apron in black
- Map pockets on the front seatbacks
- Child safety lock at the rear
- Instrument cluster: Digital instrument cluster with high-resolution 10" screen
- LED lighting in the front footwell
- LED taillights
- Steering wheel: Small multifunction leather steering wheel, flattened at the top and bottom.
- front center armrest
- Multi-collision brake
- Fatigue warning
- Emergency brake assist with automatic activation of the hazard warning lights
- Peugeot i-Toggles
- Rain sensor
- Wheels: Tire repair kit (compressor + tire sealant spray)
- Side windows in the second row and rear window are more heavily tinted.
- Seats: Driver's seat height adjustable
- Seats: Rear bench seat and backrest split 40/20/40, foldable
- Lane keeping assist with steering intervention
- Stop&Start automatic
- Chrome-plated decorative exhaust tailpipes
- Immobiliser
- Decorative trim in high-gloss black on the side windows
- Adjustable intermediate loading shelf

- Alarm system (including all-round, interior, towing protection and safe locking)
- luggage compartment partition net
- Paint finish: Metallic



Brief expert findings

Documents submitted	At the time of the inspection, the vehicle registration certificate Part 2 (title) was available, but the vehicle registration certificate Part 1 (document) was not. (Copy)
VIN comparison	The vehicle identification number (VIN) was read from the vehicle and its conformity with the submitted documents was confirmed by the undersigned during the inspection.
Inspection	The inspection conditions were sufficient for the assessment of the vehicle. No lifting equipment or pit was available for inspecting the vehicle. Therefore, inspection of the vehicle's underside was only possible to a limited extent.
Test drive	No test drive/shunting maneuver was carried out during the inspection of the vehicle.
Engine function test	An engine test run was performed.

Value reducing factors

No.	Component group	Description
1	Rear bumper	Rear bumper - Scratch(es) - Smart repair
2	Boot lid / rear door	Boot lid - Scratched - Smart repair
3	Rear bumper	Spoiler - Scratched - Replace
4	Door - front right side	Door - Dent / paintcoat damage - Repair and paint
5	Door - rear right side	Door - Scratch(es) - Paint

Wear and tear

No.	Component group	Description
1	Front bumper	Front bumper - Stone chips - No deduction
2	Vehicle glazing	Windscreen - Stone chips - No deduction
3	Interior	Interior - Soiled - No deduction
4	Bonnet	Bonnet - dent(s) - No deduction

The vehicle shows signs of wear and tear commensurate with its age and use.

Order/Scope of Order

An order was placed to prepare a sales report for the described vehicle. This report includes the following:

- Description of key vehicle information
- Documentation of equipment features
(*Delivery by third-party service providers*)
- Documentation of damage, defects, missing parts
- Documentation of prior damage, unrepaired prior damage, repainting
- A brief visual or functional inspection of the equipment details, if possible.
(*Functional testing of driver assistance systems is not included in the scope of services!*)
- a photographic documentation of the vehicle



Basis for the order

This product is based on the guidelines for vehicle returns and valuations published by Alphabet Fleet GmbH. The expert makes the specific findings in each individual case objectively, within the framework of the prescribed standards, based on their own expertise.

The vehicle inspection takes place in a fully assembled, unassembled state.

Damage or defects that can only be detected during disassembly/diagnostic work or through further investigation remain within the realm of prognostic risk. An increased risk exists due to concealed defects caused by fraudulent misrepresentation and which were not identifiable by the expert.

Damage or defects resulting from normal use or wear and tear of the vehicle will be accepted in accordance with the applicable standard.

There was no explicit identification or monetary consideration of the expected features within the product.

Features which, in their nature and extent, slightly exceed normal use but do not constitute unacceptable damage, will be documented and indicated as signs of wear, if applicable.

Damage or defects that, according to the applicable standard, can no longer be attributed to normal use or wear and tear are listed under "Value Reducing Factors" in the product description.

Depending on the product specification, a monetary ID can be provided. If this takes place, the costs can be 100% d or pro rata depending on the vehicle's age and mileage.

Previous damages

No apparent prior damage that had been repaired could be found on the vehicle.

Comments

- Winterradsatz ist kein Bestandteil des Auslieferungsumfangs.

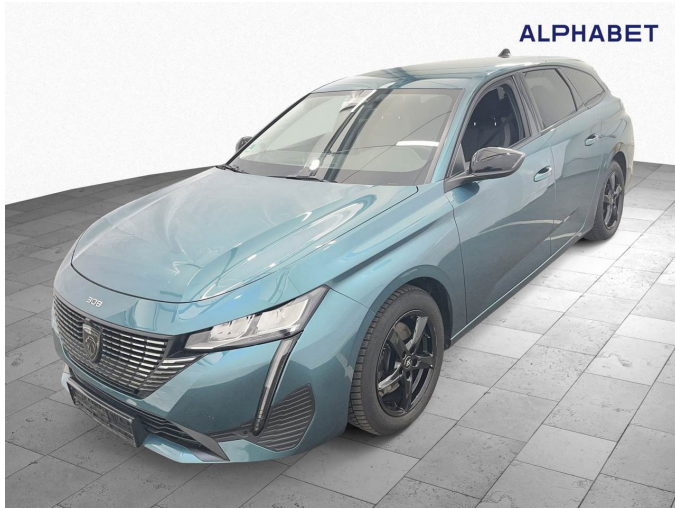


Figure 1: Diagonal front (left)



Figure 2: Diagonal front (right)



Figure 3: Diagonal rear (left)



Figure 4: Diagonal rear (right)



Figure 5: Interior - front

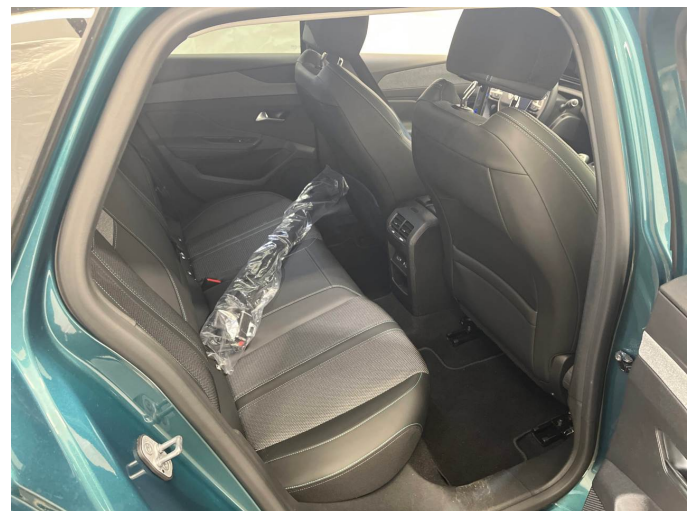


Figure 6: Interior - rear



Figure 7: Instrument cluster



Figure 8: Instrument panel

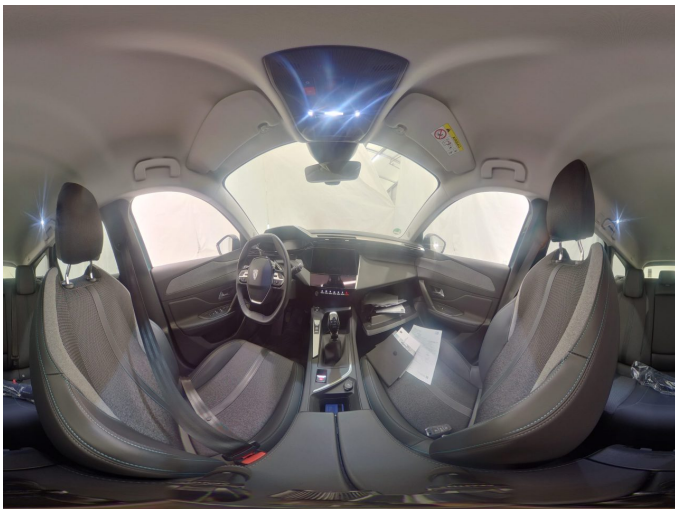


Figure 9: Interior 360° view

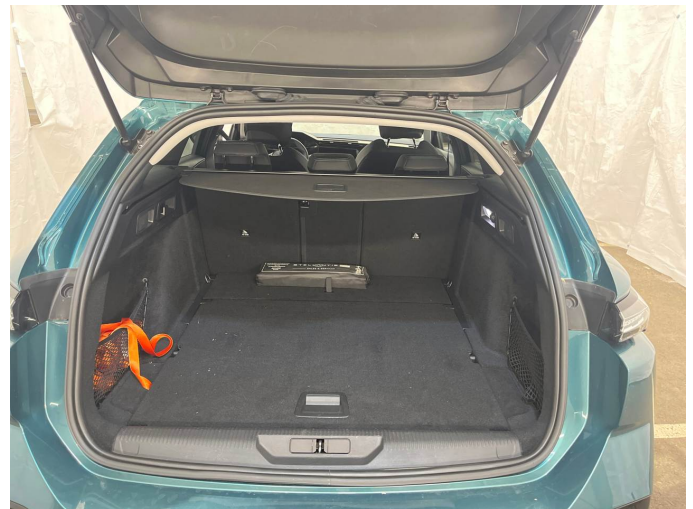


Figure 10: Cargo area

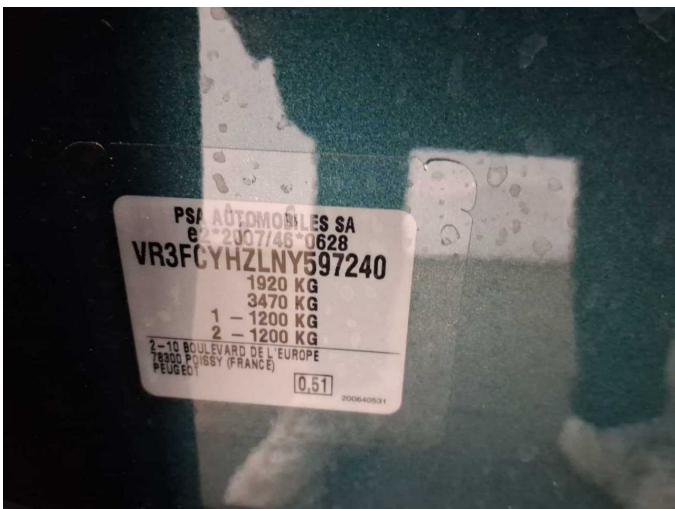


Figure 11: VIN

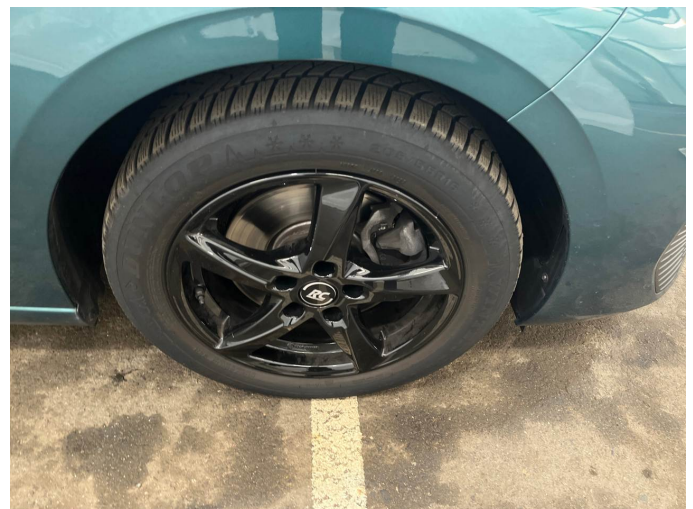


Figure 12: Mounted tyres



Figure 13: Documents



Figure 14: Documents

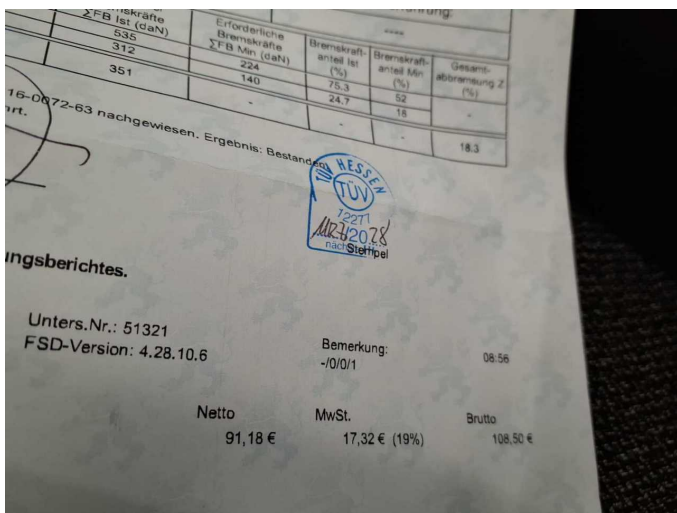


Figure 15: Documents

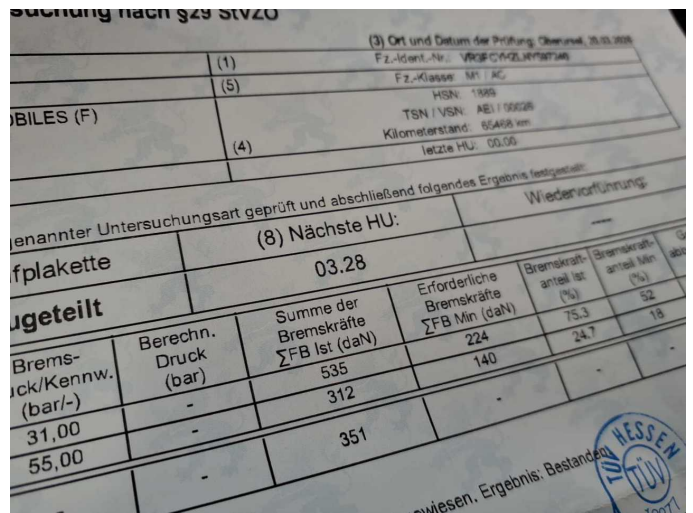


Figure 16: Documents



Figure 17: Additional tyres



Figure 18: Navigation



Figure 19: Misc.



Figure 20: Misc.



Figure 21: Misc.



Figure 22: Misc.



Figure 23: Misc.



Figure 24: Misc.



Figure 25: Misc.



Figure 26: Misc.



Figure 27: Misc.

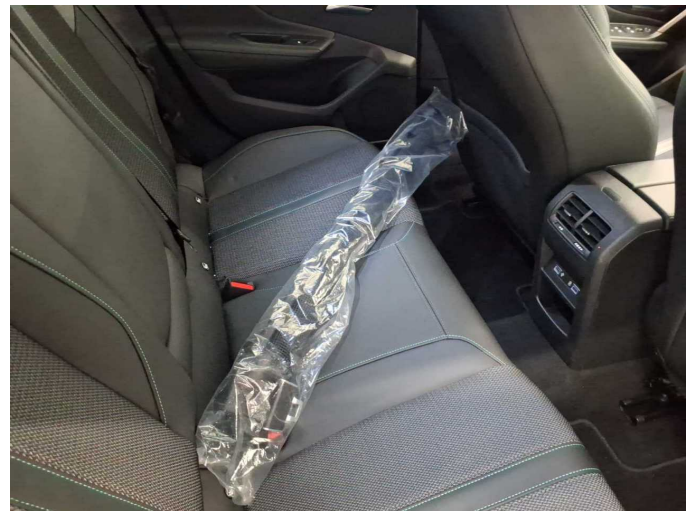


Figure 28: Misc.



Figure 29: Misc.



Figure 30: Misc.



Damage 1: Rear bumper: Rear bumper - Scratch(es) - Smart repair



Damage 1: Rear bumper: Rear bumper - Scratch(es) - Smart repair



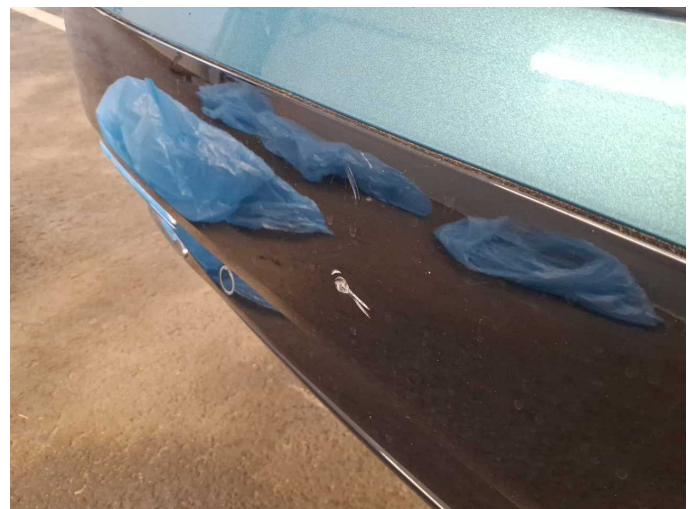
Damage 2: Boot lid / rear door: Boot lid - Scratched - Smart repair



Damage 2: Boot lid / rear door: Boot lid - Scratched - Smart repair



Damage 3: Rear bumper: Spoiler - Scratched - Replace



Damage 3: Rear bumper: Spoiler - Scratched - Replace



Damage 4: Door - front right side: Door - Dent / paintcoat damage - Repair and paint



Damage 4: Door - front right side: Door - Dent / paintcoat damage - Repair and paint



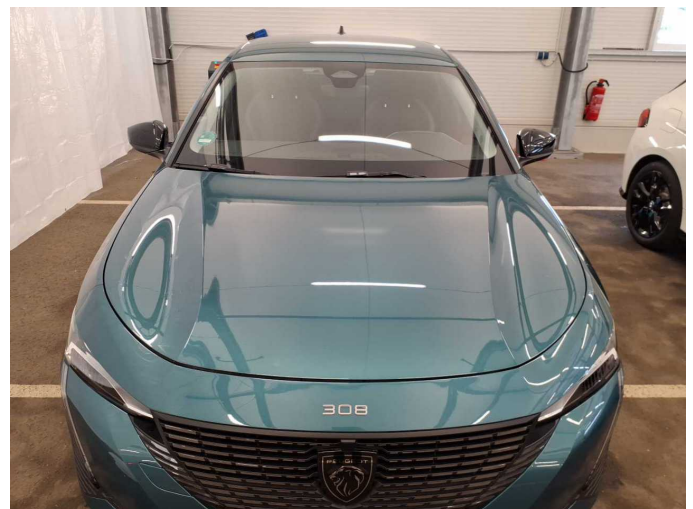
Damage 4: Door - front right side: Door - Dent / paintcoat damage - Repair and paint



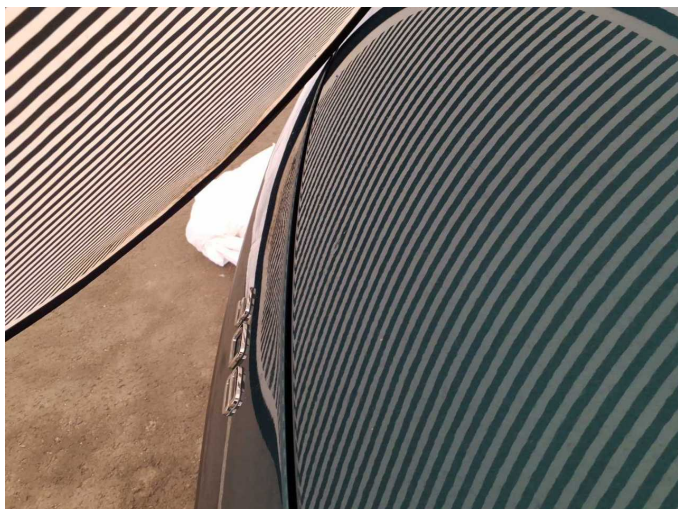
Damage 5: Door - rear right side: Door - Scratch(es) - Paint



Damage 5: Door - rear right side: Door - Scratch(es) - Paint



Wear and tear 4: Bonnet: Bonnet - dent(s) - No deduction



Wear and tear 4: Bonnet: Bonnet - dent(s) - No deduction