

## Expertise

Protocol number: 46298353  
Order No. / Reference: 26638881  
Inspection date: 2 Jul 2026

Manufacturer: Volkswagen

Model: Tiguan 2.0 TDI SCR 4MOTION DSG Life

VIN: WVGZZZ5NZMW069529



### Vehicle details

#### Manufacturer / Type / Model / Equipment

Volkswagen Tiguan 2.0 TDI SCR 4MOTION DSG Life

**Vehicle Identification number** WVGZZZ5NZMW069529

**Mileage (Read)** 134,240 km

**First registration** 17 Jun 2021

**Number of holders** 1

**Power / Engine displacement** 147 kw / 1,968 ccm

**Fuel type / Cylinder** Diesel / 4

**Gearbox / Number of gears** Automatic / 7

**Type of drive** All-wheel drive

**Type of vehicle** SUV

**Colour / colour code** Dolphin grey metallic (C7Q)

**Doors / Seats** 5 / 5

**Upholstery type** Cloth

**Colour of upholstery** Black-Anthracite

**Vehicle with smoke odor** no



## Vehicle details

<b>Maintenance booklet / proof</b>	digital evidence / incomplete	<b>Next maintenance in</b>	3,000 km
<b>Last service on / at</b>	06/2024 at 91,701 km		
<b>Key is / should be</b>	2 / 2	<b>FZG documents</b>	ZB#2 (B) was available (copy), ZB#1 (S) was not available.
		<b>Letter No.</b>	GC209056
<b>Previous damage / Accident</b>	Detectable	<b>Repainting</b>	None detectable
<b>Inspection conditions</b>	sufficient	<b>Lifting equipment / pit</b>	yes
<b>Test drive</b>	short drive on the company premises	<b>Engine function test</b>	Performed
<b>Manufacturer key number/ type code number</b>	0603 / CLE 01067		
<b>Emission standard</b>	EURO6;WLTP;AP;PI/CI; M, N1 I	<b>fine dust sticker</b>	
<b>Permitted total weight</b>	2,250 kg	<b>Empty weight</b>	

## Tyres

### Mounted tyres

#	Tyre size	Type of tyre	Manufacturer	Tread depth
1)	235/55 R18 100V	Summer tires (with run-flat tires) on Light alloy	Pirelli	5mm / 5mm
2)	235/55 R18 100V	Summer tires (with run-flat tires) on Light alloy	Pirelli	5mm / 5mm

### Additional tyres

#	Tyre size	Type of tyre	Manufacturer	Tread depth
1)	235/55 R18 104H	Winter tires (with run-flat tires) on Light alloy	Pirelli	4mm / 4mm
2)	235/55 R18 104H	Winter tires (with run-flat tires) on Light alloy	Pirelli	5mm / 5mm

### Replacement

Typ	Tyre size	Type of tyre	Manufacturer	Tread depth
N	145/85 R18 103M	Summer tyres on Steel	Sonstige	5 mm

**Legend: Tread depth information for the left tire is listed first, for the right tire it is listed second on the axle in the direction of travel.**



## Equipment

### Standard equipment

- Airbag for driver and front passenger including knee airbag on the driver's side
- Permanent 4MOTION all-wheel drive
- Electrically adjustable and heated exterior mirrors
- third brake light
- Diesel particulate filter
- Parking assistance
- Electronic Stability Program with counter-steering support
- Driving profile selection
- Electric windows front and rear
- Windscreen made of laminated safety glass, heat and sound insulating
- Rear window heated
- Interior mirror automatically dimming
- LED license plate lighting
- Combination instrument cluster with electronic speedometer
- Paint finish: Solid
- LED headlights with LED daytime running lights
- Light in the front footwell
- Manual headlight range adjustment
- Multifunction display "Premium"
- Non-smoking version
- Upholstery: Cloth
- Radio accessories: 8 speakers
- Tire pressure monitoring system
- Wheels: Light alloy (4) "Frankfurt" 7 J x 18
- Gearshift knob in leather
- electromechanical power steering
- Seats: Front passenger seat backrest folds down completely
- Seats: Lumbar support in the front
- Seats: Front seats with height adjustment
- Start-stop system with brake energy recuperation
- Power outlet: 2 USB-C ports on the front
- First aid kit, warning triangle and high-visibility vest
- Green thermal insulation glazing, sides and rear
- Airbag: Head airbag system for front and rear passengers including front side airbags
- Adaptive Cruise Control (ACC) (DSG)
- Hill descent control
- black roof rails
- Tachometer
- Electronic parking brake including auto-hold function
- Automatic headlight control, with LED daytime running lights
- High beam control Light Assist
- Pedestrian detection
- Transmission: 7-speed DSG
- rear window wiper
- ISOFIX mounting points, also for i-Size child car seats
- Air conditioning system "Air Care Climatronic"
- Rear headrests (3)
- Front headrests
- LED reading lights, 2 in the front and 2 in the rear
- Steering wheel: Multifunction steering wheel in leather, with paddle shifters
- front center armrest
- Fatigue detection
- Emergency call service
- Radio "Composition"
- Rain sensor
- Wheels: AirStop tires 235/55 R 18, rolling resistance class A
- Drawers under the front seats
- Seat belts: Three-point automatic seat belts at the front with height adjustment and belt tensioner
- Seats: Comfort seats in the front
- Seats: Rear bench seat asymmetrically split
- Lane keeping assistant "Lane Assist"
- 12-volt socket
- Textile floor mats front and rear
- Electronic immobilizer
- Central locking without safe locking, with remote control and 2 remote keys



### Extra equipment

- Navigation system "Discover Media" incl. "Streaming & Internet" (20.3 cm TFT touchscreen - FM radio reception - Dual tuner with phase diversity for best possible radio reception - Radio Data System (RDS) - Radio station logos - MP3 playback - USB-C interface with Apple compatibility - 4 x 20 watt output power - Map with 2D display - 3-band sound control - Telephone interface - Traffic sign recognition - Points of interest - DAB+ digital radio reception)
- Radio accessories: "Harman Kardon" sound system (8+1 speakers - 480 watts total power - digital 16-channel amplifier - subwoofer)
- Rear View reversing camera
- Seats: ergoActive front seats (ergoActive front seats height-adjustable, seat and backrest tilt adjustable, thigh support longitudinally adjustable - lumbar support in front electrically adjustable and with massage function - seat center panels of the front seats and the outer rear seats in microfleece "ArtVelours" - top comfort seats in front)
- Wheels: Light alloy (4) "Nice" 7 J x 18 AirStop tires 235/55 R 18 (in black, surface polished - Airstop tires 235/55 R 18 - wheel locks with enhanced theft protection)
- Windows: Rear side windows and rear window tinted
- Foldable towbar (electric release)
- Mesh partition
- Package: Ambient lighting package (ambient lighting version 2 - chrome applications on mirror adjustment and window regulator switches, door pull handles; interior door controls in matt chrome - decorative inserts for instrument panel and front door trim - illuminated aluminum door sill trims at the front)
- Package: Business Premium (DSG) (App-Connect incl. App-Connect Wireless for Apple CarPlay and Android Auto - Leather multifunction steering wheel, heated, with shift paddles - Automatically heated front windscreen washer nozzles - Voice control - "Comfort" telephone interface with inductive charging function - Heated front seats)
- Paint finish: Metallic
- Tailgate with electric opening and closing, adjustable opening angle
- Wheels: Spare wheel in a weight- and space-saving design (on-board tools and jack - luggage compartment floor height-adjustable in 2 stages - spare wheel in a weight- and space-saving design)

### Brief expert findings

Documents submitted	At the time of the inspection, the vehicle registration certificate Part 2 (title) was available, but the vehicle registration certificate Part 1 (document) was not. (Copy)
VIN comparison	The vehicle identification number (VIN) was read from the vehicle and its conformity with the submitted documents was confirmed by the undersigned during the inspection.
Inspection	The inspection conditions were sufficient for the assessment of the vehicle. Lifting equipment and/or a pit were available for examining the vehicle.
Test drive	A short maneuvering and shunting exercise was carried out on the company premises.
Engine function test	An engine test run was performed.

### Value reducing factors

No.	Component group	Description
1	Trim / covers	Door trim - rear left side - Deformed - Loss in value
2	Mudguard - right side	Mudguard - right side - Scratch(es) - Smart repair
3	Door - rear right side	Door - Scratch(es) - Smart repair
4	Side panel - rear left side	Sill - Scratch(es) - Smart repair
5	Trim / covers	Door trim - rear right side - Deformed - Loss in value
6	Door - front left side	Brightware - lower - Scratch(es) - Replace
7	Door - front left side	Door - Scratch(es) - Paint
8	Rear bumper	Rear bumper - Scratch(es) - Paint
9	Front bumper	Front bumper - Scratched - Paint



## Wear and tear

No.	Component group	Description
1	Door - front right side	Door edge - Scratch(es) - No deduction
2	Door - rear left side	Door - Scratch(es) - No deduction

The vehicle shows signs of wear and tear commensurate with its age and use.

## Previous damages

No.	Previous damage	Extent of damage (Net)
1	Roof, Provided by user / customer, from 5 May 2026	2.051,90 €

## Order/Scope of Order

An order was placed to prepare a sales report for the described vehicle. This report includes the following:

- Description of key vehicle information
- Documentation of equipment features  
(*Delivery by third-party service providers*)
- Documentation of damage, defects, missing parts
- Documentation of prior damage, unrepaired prior damage, repainting
- A brief visual or functional inspection of the equipment details, if possible.  
(*Functional testing of driver assistance systems is not included in the scope of services!*)
- a photographic documentation of the vehicle

## Basis for the order

This product is based on the guidelines for vehicle returns and valuations published by Alphabet Fleet GmbH. The expert makes the specific findings in each individual case objectively, within the framework of the prescribed standards, based on their own expertise.

The vehicle inspection takes place in a fully assembled, unassembled state.

Damage or defects that can only be detected during disassembly/diagnostic work or through further investigation remain within the realm of prognostic risk. An increased risk exists due to concealed defects caused by fraudulent misrepresentation and which were not identifiable by the expert.

Damage or defects resulting from normal use or wear and tear of the vehicle will be accepted in accordance with the applicable standard.

There was no explicit identification or monetary consideration of the expected features within the product.

Features which, in their nature and extent, slightly exceed normal use but do not constitute unacceptable damage, will be documented and indicated as signs of wear, if applicable.

Damage or defects that, according to the applicable standard, can no longer be attributed to normal use or wear and tear are listed under "Value Reducing Factors" in the product description.

Depending on the product specification, a monetary ID can be provided. If this takes place, the costs can be 100% d or pro rata depending on the vehicle's age and mileage.

## Previous damages

According to available information previous damages were repaired at the vehicle. Traces of repairs, which allow conclusions about the area of repair, were not recognizable during the inspection.

## Comments

- Winterradsatz ist kein Bestandteil des Auslieferungsumfangs.



Figure 1: Diagonal front (left)



Figure 2: Diagonal front (right)



Figure 3: Diagonal rear (left)



Figure 4: Diagonal rear (right)



Figure 5: Interior - front



Figure 6: Interior - rear



Figure 7: Instrument cluster



Figure 8: Instrument panel



Figure 9: Interior 360° view



Figure 10: Cargo area

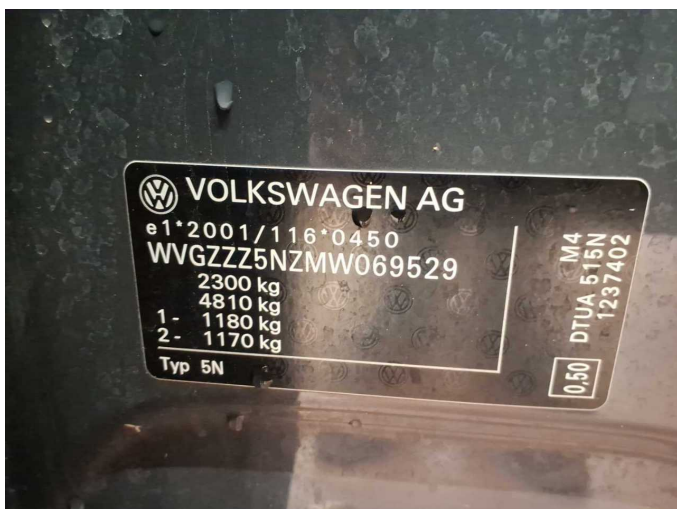


Figure 11: VIN

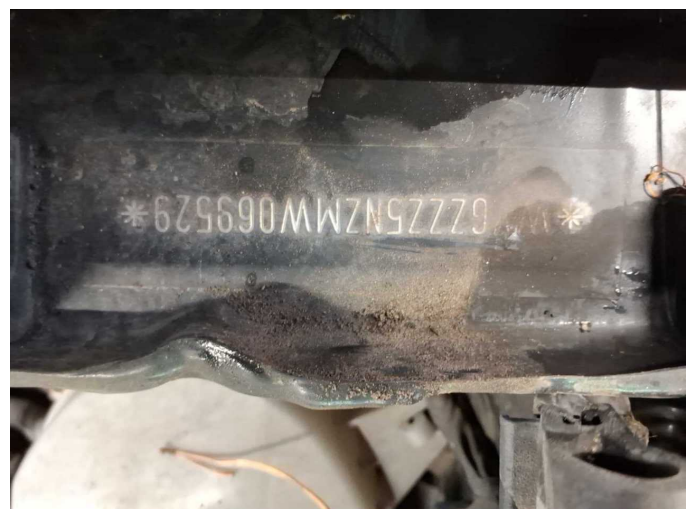


Figure 12: VIN



Figure 13: Mounted tyres



Figure 14: Documents



Figure 15: Documents



Figure 16: Documents



Figure 17: Additional tyres

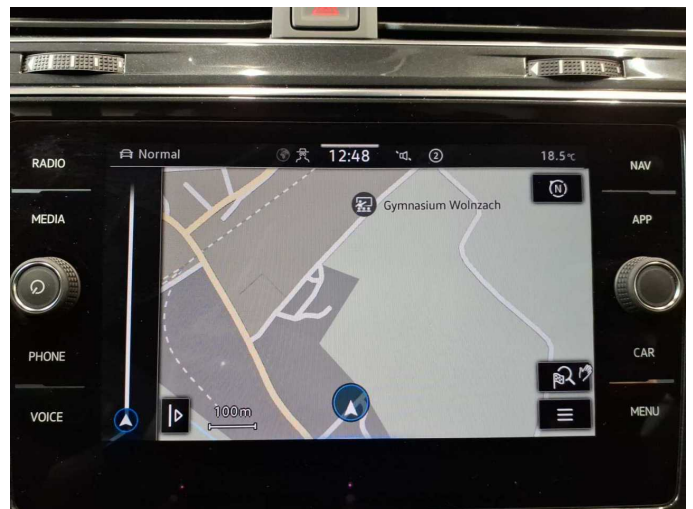


Figure 18: Navigation



Figure 19: Misc.



Figure 20: Misc.



Figure 21: Misc.



Figure 22: Misc.



Figure 23: Misc.

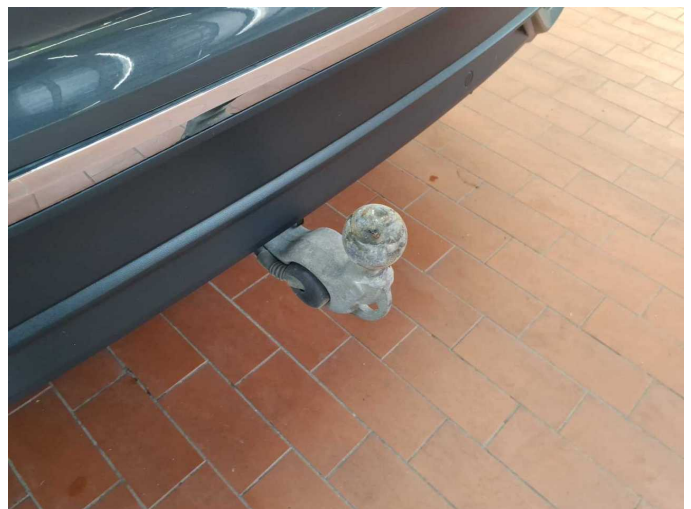


Figure 24: Misc.



Figure 25: Misc.



Figure 26: Misc.



Figure 27: Misc.



Figure 28: Misc.



Figure 29: Misc.



Figure 30: Misc.



Figure 31: Misc.



Figure 32: Misc.



Figure 33: Misc.

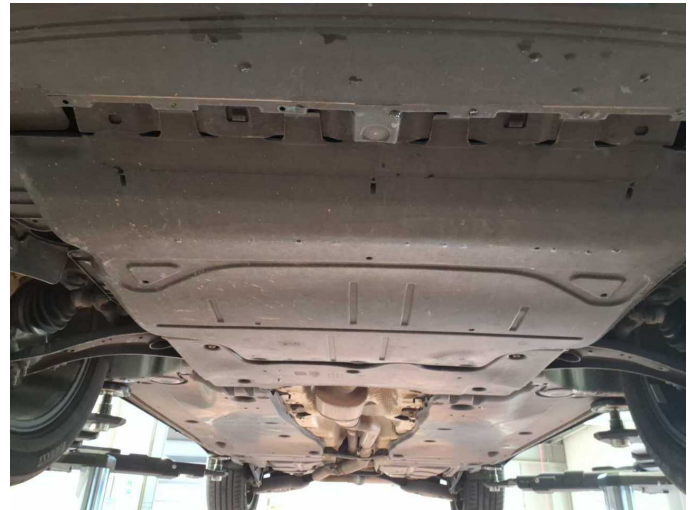


Figure 34: Misc.



Figure 35: Misc.



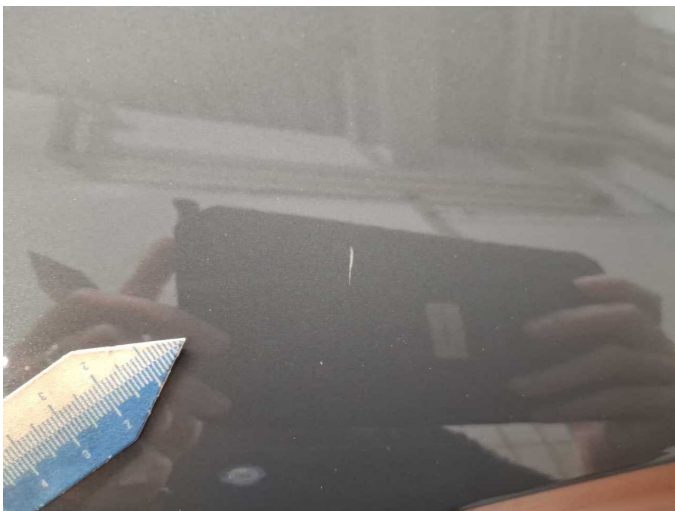
Figure 36: Misc.



**Damage 1:** Trim / covers: Door trim - rear left side - Deformed - Loss in value



**Damage 1:** Trim / covers: Door trim - rear left side - Deformed - Loss in value



**Damage 2:** Mudguard - right side: Mudguard - right side - Scratch(es) - Smart repair



**Damage 2:** Mudguard - right side: Mudguard - right side - Scratch(es) - Smart repair



**Damage 3:** Door - rear right side: Door - Scratch(es) - Smart repair



**Damage 3:** Door - rear right side: Door - Scratch(es) - Smart repair



**Damage 4:** Side panel - rear left side: Sill - Scratch(es) - Smart repair



**Damage 4:** Side panel - rear left side: Sill - Scratch(es) - Smart repair



**Damage 5:** Trim / covers: Door trim - rear right side - Deformed - Loss in value



**Damage 5:** Trim / covers: Door trim - rear right side - Deformed - Loss in value



**Damage 6:** Door - front left side: Brightware - lower - Scratch(es) - Replace



**Damage 6:** Door - front left side: Brightware - lower - Scratch(es) - Replace



**Damage 7:** Door - front left side: Door - Scratch(es) - Paint



**Damage 7:** Door - front left side: Door - Scratch(es) - Paint



**Damage 8:** Rear bumper: Rear bumper - Scratch(es) - Paint



**Damage 8:** Rear bumper: Rear bumper - Scratch(es) - Paint



**Damage 8:** Rear bumper: Rear bumper - Scratch(es) - Paint



**Damage 9:** Front bumper: Front bumper - Scratched - Paint



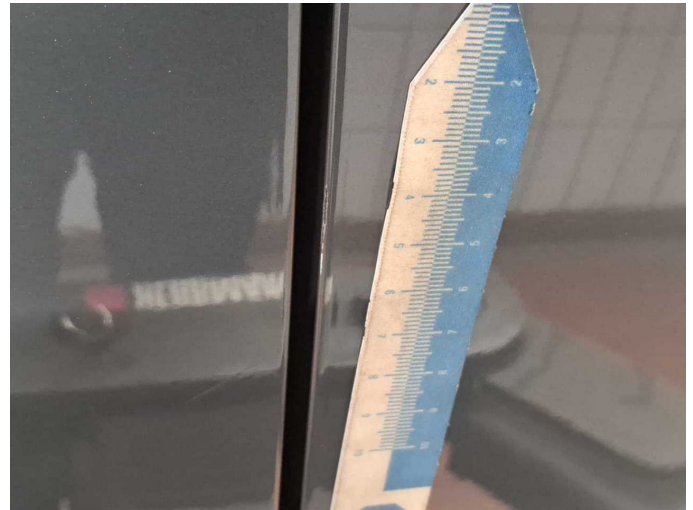
**Damage 9:** Front bumper: Front bumper - Scratched - Paint



**Damage 9:** Front bumper: Front bumper - Scratched - Paint



**Damage 9:** Front bumper: Front bumper - Scratched - Paint



**Wear and tear 1:** Door - front right side: Door edge - Scratch(es) - No deduction



**Wear and tear 1:** Door - front right side: Door edge - Scratch(es) - No deduction



# Wartungshistorie

(gemäß Auftraggeber Informationen)

Fahrgestellnummer: WVGZZZ5NZMW069529  
Hersteller / Modell: VOLKSWAGEN VOLKSWAGEN Tiguan 2.0 TDI SCR 4MOTION  
DSG Life

Datum	KM-Stand	Beschreibung
27.06.2024	91.701	AU; Bremsflüssigkeit; Bremsflüssigkeit ern; Getriebeöl ern/prüfen; Kraftstofffilter ern; Luftfiltereinsatz ern; Motoröl b. Wartung; Ölfilter ern; Ölwechsel - Hinterachse; Regelwartungsdienst; Reparatur Sonstiges; Systemtest/Eigendiagnose; Wartung Sonstiges
04.08.2023	66.783	Bremse Sonstiges; Bremsklötze hinten; Bremsklötze vorne; Bremsscheiben + Klötze h; Bremsscheiben + Klötze v; Bremsscheiben hinten; Bremsscheiben vorne
02.05.2023	61.364	Motoröl b. Wartung; Regelwartungsdienst
28.04.2022	31.466	Motoröl b. Wartung; Regelwartungsdienst