

Expertise

Protocol number: 46294675
Order No. / Reference: 26405910-1
Inspection date: 12 Jun 2026

Manufacturer: Opel

Model: Insignia Sports Tourer 2.0 Diesel Aut. Business

VIN: W0VZT8GP0N1029649



Vehicle details

Manufacturer / Type / Model / Equipment

Opel Insignia Sports Tourer 2.0 Diesel Aut. Business

Vehicle Identification number W0VZT8GP0N1029649

Mileage (Read) 92,093 km

First registration 18 Oct 2022

Number of holders 1

Power / Engine displacement 128 kw / 1,995 ccm

Fuel type / Cylinder Diesel / 4

Gearbox / Number of gears Automatic / 9

Type of drive Front drive

Type of vehicle Station wagon

Colour / colour code Grey Metallic

Doors / Seats 5 / 5

Upholstery type Alcantara / Leather

Colour of upholstery Black-Anthracite

Vehicle with smoke odor no



Vehicle details			
Maintenance booklet / proof	Available / complete	Next maintenance in	7 %
Last service on / at	07/2025 at 71,127 km		
Key is / should be	2 / 2	FZG documents	ZB#2 (B) was available (copy), ZB#1 (S) was not available.
		Letter No.	GN186416
Previous damage / Accident	None detectable	Repainting	None detectable
Inspection conditions	sufficient	Lifting equipment / pit	yes
Test drive	Not performed	Engine function test	Performed
Manufacturer key number/ type code number	1844 / AMC 00298		
Emission standard	EURO6;WLTP;AP;PI/CI; M, N1 I	fine dust sticker	
Permitted total weight	2,215 kg	Empty weight	

Tyres

Mounted tyres				
#	Tyre size	Type of tyre	Manufacturer	Tread depth
1)	245/45 R18 100Y	Summer tyres on Light alloy	Pirelli	6mm / 6mm
2)	245/45 R18 100Y	Summer tyres on Light alloy	Pirelli	5mm / 5mm
Additional tyres				
#	Tyre size	Type of tyre	Manufacturer	Tread depth
1)	225/55 R17 101V	Winter tyres on Light alloy	Bridgestone	6mm / 6mm
2)	225/55 R17 101V	Winter tyres on Light alloy	Bridgestone	6mm / 6mm
Replacement				
Typ	Tyre size	Type of tyre	Manufacturer	Tread depth
	Tirefit	Expiration date 09/2026		

Legend: Tread depth information for the left tire is listed first, for the right tire it is listed second on the axle in the direction of travel.



Equipment

Standard equipment

- Storage compartments
- Airbag: Front airbags and side airbags, driver and front passenger
- Anti-lock braking system (ABS)
- Hill Start Assist
- third brake light
- Roof rails, silver anodized
- Diesel particulate filter
- Electronic brake force distribution (EBD)
- Electric windows front and rear
- Pedestrian protection including active hood
- luggage compartment cover
- Speed controller
- Back window, heater
- Child safety lock in the rear doors, manual
- Front headrests
- Paint finish: Solid
- LED fog lights
- Steering column adjustable for height and reach
- Illuminated makeup mirrors in both sun visors
- Package: Winter 1
- Parkpilot, front and rear parking aid
- Quickheat rapid heating system
- Radio: Multimedia Navi Pro with 8" color touchscreen display
- Wheels: 7.5 J x 17 alloy wheels in a 5 double-spoke design
- Seat belts: Three-point seat belts in all seats
- Visibility equipment
- Lane Keeping Assist
- Bumpers painted in body color
- Traffic sign assistant
- Immobiliser
- Central locking with remote control
- Adaptive brake light
- Airbag: Front and rear outer head airbags
- Ambient lighting
- Electrically adjustable and heated exterior mirrors for driver and passenger side
- Glasses compartment in the headliner
- Decorative strip hexagon
- Tachometer
- Electronic Stability Program (ESP Plus)
- Front collision warning system with pedestrian detection and automatic emergency braking
- Noise-reducing, laminated front side windows
- Transmission: 8-speed automatic transmission
- rear window wiper
- Automatic climate control, two zones
- Rear headrests (3 pieces)
- LED headlights
- LED daytime running lights including LED indicators, front and LED taillights
- Center armrest, front
- Electric parking brake
- Upholstery: Billy fabric, black
- Radio: Digital radio reception DAB+
- Tire repair kit
- Tire pressure gauge
- Rear seat backrest folds forward in a 60:40 split
- Power steering
- safety net
- Seats: Ergonomic active seat (AGR) driver
- Start/Stop System
- Traction Control (TC) Plus
- Pre-installation for child seat mounting system "ISOFIX"
- Thermal insulation glazing, green tinted



Extra equipment

- Package: Business Premium (Easy Access Package: Keyless locking and starting system, sensor-controlled tailgate, electric loading sill protection, stainless steel - Charging Package: Wireless charging, 2 USB ports, rear center console - Park & Go: Digital reversing camera, reversing assistant, lane change assistant, blind spot warning in both exterior mirrors - Innovation Package 1: IntelliLux LED Pixel headlights, traffic sign assistant - Solar Protect heat-insulating glass, heavily tinted, in the rear)
- Upholstery: Alcantara trim, black including Winter Package 3 (Active Seat (AGR), front (length, height, backrest angle manual, seat angle electrically adjustable, lumbar support electro-pneumatic), Alcantara/ leatherette, side airbags, rear center armrest, rear cup holders and pass-through, rear seat with FlexFold, 40:20:40 split-folding, heated front/rear seats, heated leather steering wheel, heated ThermoTec windscreen, Seat Comfort Package 1 (driver's seat 8-way electrically adjustable, memory function for driver's seat and exterior mirrors, massage function for driver, exterior mirrors with ambient lighting, electrically adjustable, heated and folding), Charging Package (wireless charging, USB)
- Package: Innovations 2 (automatic transmission) (Head-up display - Adaptive cruise control (Generation 3), Stop & Go function - Forward collision warning with pedestrian detection and automatic emergency braking, active from 4 km/h, range 150 m. In case of risk of collision, the braking system is prepared and, if necessary, emergency braking / automatic emergency braking is initiated - Traffic sign recognition)
- Package: Sound (Bose sound system)
- Paint finish: Metallic
- Swiveling trailer hitch (including trailer stability program)
- Wheels: 8.5 J x 18 alloy wheels in high-gloss black DC (multi-spoke) (with 245/45 R 18 tires)
- Wheels: Additional set of 17" alloy winter wheels SFP

Brief expert findings

Documents submitted	At the time of the inspection, the vehicle registration certificate Part 2 (title) was available, but the vehicle registration certificate Part 1 (document) was not. (Copy)
VIN comparison	The vehicle identification number (VIN) was read from the vehicle and its conformity with the submitted documents was confirmed by the undersigned during the inspection.
Inspection	The inspection conditions were sufficient for the assessment of the vehicle. Lifting equipment and/or a pit were available for examining the vehicle.
Test drive	No test drive/shunting maneuver was carried out during the inspection of the vehicle.
Engine function test	An engine test run was performed.

Value reducing factors

No.	Component group	Description
1	Misc.	Main inspection - No evidence - No deduction
2	Door - front right side	Door - dent(s) - Smart repair
3	Boot lid / rear door	Boot lid - dent(s) - Smart repair
4	Roof	Roof - dent(s) - Smart repair
5	Front bumper	Front bumper - Scratched - Smart repair

Wear and tear

No.	Component group	Description
1	Vehicle glazing	Windscreen - Stone chips - No deduction
2	Door - front right side	Door (Türkante) - Scratch(es) - No deduction

The vehicle shows signs of wear and tear commensurate with its age and use.



Order/Scope of Order

An order was placed to prepare a sales report for the described vehicle. This report includes the following:

- Description of key vehicle information
- Documentation of equipment features
(Delivery by third-party service providers)
- Documentation of damage, defects, missing parts
- Documentation of prior damage, unrepaired prior damage, repainting
- A brief visual or functional inspection of the equipment details, if possible.
(Functional testing of driver assistance systems is not included in the scope of services!)
- a photographic documentation of the vehicle

Basis for the order

This product is based on the guidelines for vehicle returns and valuations published by Alphabet Fleet GmbH. The expert makes the specific findings in each individual case objectively, within the framework of the prescribed standards, based on their own expertise.

The vehicle inspection takes place in a fully assembled, unassembled state.

Damage or defects that can only be detected during disassembly/diagnostic work or through further investigation remain within the realm of prognostic risk. An increased risk exists due to concealed defects caused by fraudulent misrepresentation and which were not identifiable by the expert.

Damage or defects resulting from normal use or wear and tear of the vehicle will be accepted in accordance with the applicable standard.

There was no explicit identification or monetary consideration of the expected features within the product.

Features which, in their nature and extent, slightly exceed normal use but do not constitute unacceptable damage, will be documented and indicated as signs of wear, if applicable.

Damage or defects that, according to the applicable standard, can no longer be attributed to normal use or wear and tear are listed under "Value Reducing Factors" in the product description.

Depending on the product specification, a monetary ID can be provided. If this takes place, the costs can be 100% or pro rata depending on the vehicle's age and mileage.

Previous damages

No apparent prior damage that had been repaired could be found on the vehicle.



Figure 1: Diagonal front (left)



Figure 2: Diagonal front (right)



Figure 3: Diagonal rear (left)



Figure 4: Diagonal rear (right)



Figure 5: Interior - front

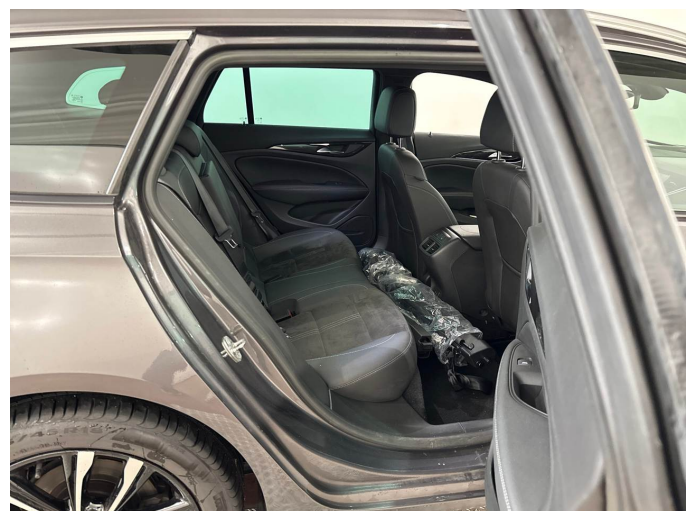


Figure 6: Interior - rear



Figure 7: Instrument cluster



Figure 8: Instrument panel



Figure 9: Interior 360° view



Figure 10: Cargo area

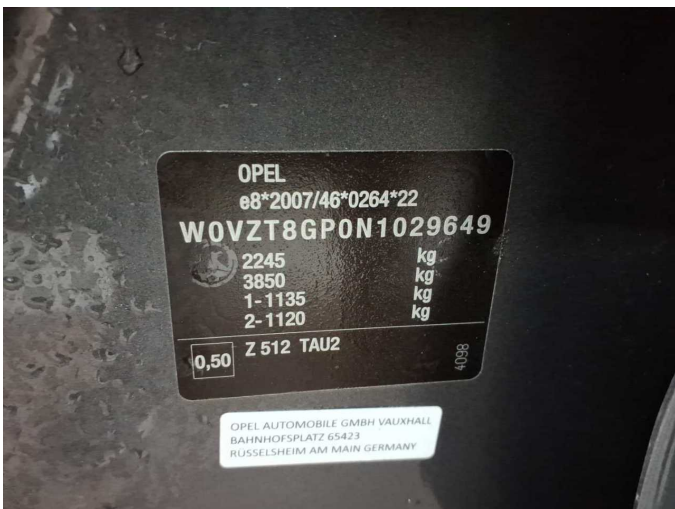


Figure 11: VIN



Figure 12: Mounted tyres



Figure 13: Documents

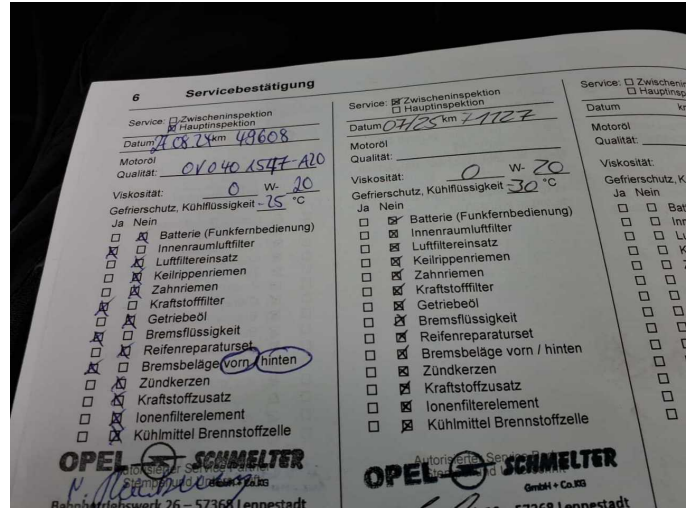


Figure 14: Documents

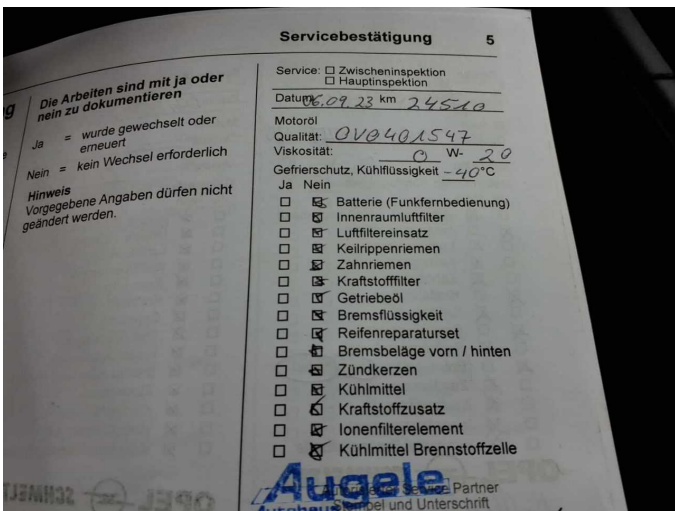


Figure 15: Documents



Figure 16: Documents



Figure 17: Additional tyres



Figure 18: Navigation



Figure 19: Misc.



Figure 20: Misc.



Figure 21: Misc.



Figure 22: Misc.



Figure 23: Misc.

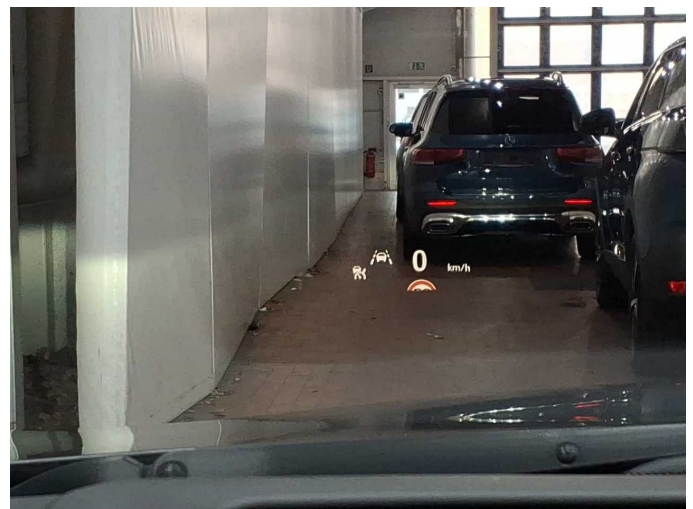


Figure 24: Misc.



Figure 25: Misc.



Figure 26: Misc.



Figure 27: Misc.



Figure 28: Misc.

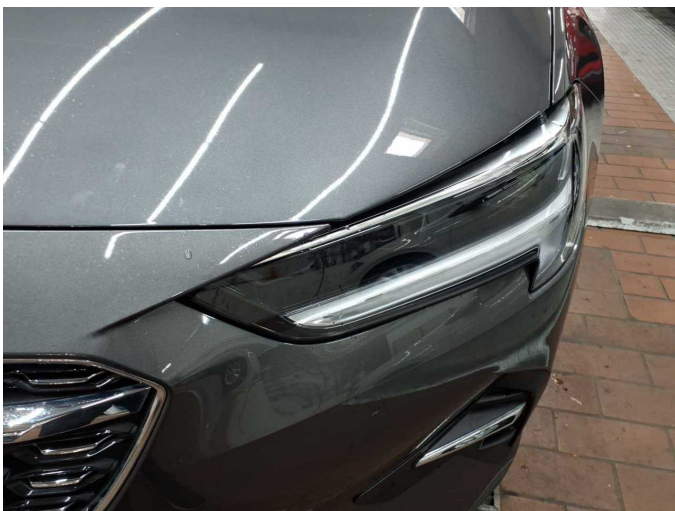


Figure 29: Misc.



Figure 30: Misc.



Figure 31: Misc.



Figure 32: Misc.



Figure 33: Misc.



Figure 34: Misc.

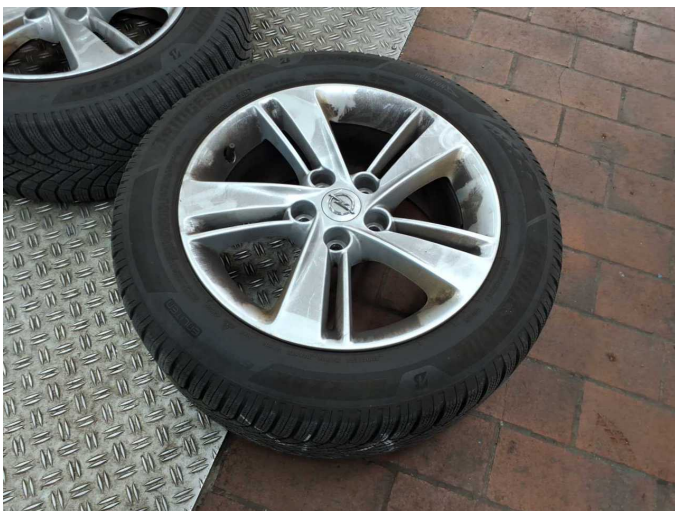


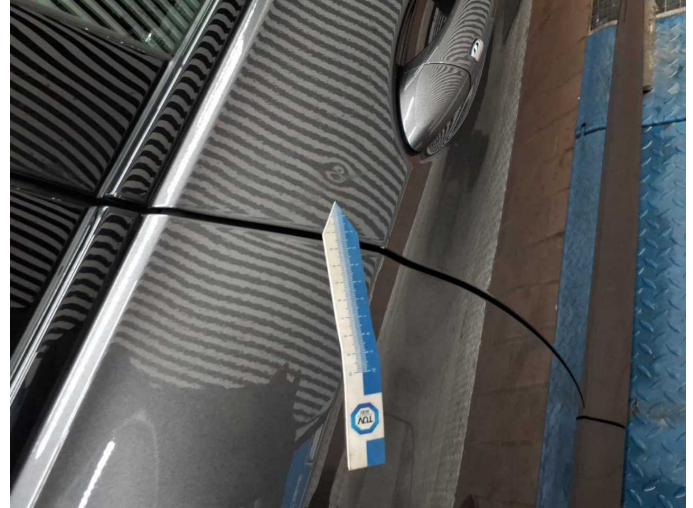
Figure 35: Misc.



Figure 36: Misc.



Damage 2: Door - front right side: Door - dent(s) - Smart repair



Damage 2: Door - front right side: Door - dent(s) - Smart repair



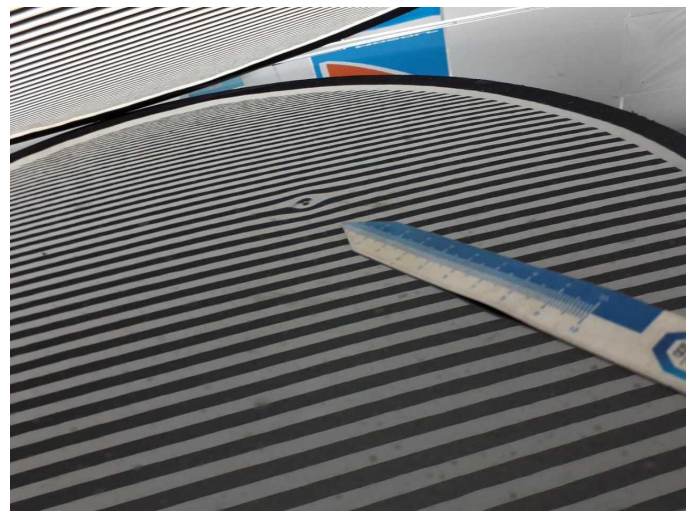
Damage 3: Boot lid / rear door: Boot lid - dent(s) - Smart repair



Damage 3: Boot lid / rear door: Boot lid - dent(s) - Smart repair



Damage 4: Roof: Roof - dent(s) - Smart repair



Damage 4: Roof: Roof - dent(s) - Smart repair



Damage 5: Front bumper: Front bumper - Scratched - Smart repair



Damage 5: Front bumper: Front bumper - Scratched - Smart repair



Damage 5: Front bumper: Front bumper - Scratched - Smart repair



Damage 5: Front bumper: Front bumper - Scratched - Smart repair



Damage 5: Front bumper: Front bumper - Scratched - Smart repair