

Expertise

Protocol number: 46332227
Order No. / Reference: 26185504
Inspection date: 2 Jul 2026

Manufacturer: Mercedes-Benz

Model: Vito 116 CDI Extralang HA Aut. PRO

VIN: W1VVLCEZ6T4567731



Vehicle details

Manufacturer / Type / Model / Equipment

Mercedes-Benz Vito 116 CDI Extralang HA Aut. PRO

Vehicle Identification number W1VVLCEZ6T4567731

Mileage (Read) 9,373 km

First registration 13 Oct 2025

Number of holders 1

Next periodical technical inspection 10/2026

(Report not on hand)

Power / Engine displacement 120 kw / 1,950 ccm

Fuel type / Cylinder Diesel / 4

Gearbox / Number of gears Automatic / 9

Type of drive Rear drive

Type of vehicle Van

Colour / colour code Grafitgrau Dunkel

Doors / Seats 4 / 3

Upholstery type Cloth

Colour of upholstery Black

Re-import no

Type of use rental car

readiness to drive Roadworthy



Vehicle details

Maintenance booklet / proof	Non-existent	Next maintenance in	454 Tag(e)
Key is / should be	2 / 2	FZG documents	ZB#2 (B) was available (copy), ZB#1 (S) was not available.
		Letter No.	HP673120
Previous damage / Accident	None detectable	Repainting	None detectable
Inspection conditions	sufficient	Lifting equipment / pit	yes
Test drive	Not performed	Engine function test	Performed
readiness to drive	Roadworthy		
Manufacturer key number/ type code number	2222 / BBJ 11542		
Emission standard	EURO6;WLTP;EB;PI/CI;M, N1, N2	fine dust sticker	
Permitted total weight	2,800 kg	Empty weight	

Tyres

Mounted tyres

#	Tyre size	Type of tyre	Manufacturer	Tread depth
1)	225/55 R17 109T	Winter tyres on Steel rim with wheel cover	Continental	6mm / 6mm
2)	225/55 R17 109T	Winter tyres on Steel rim with wheel cover	Continental	5mm / 5mm

Legend: Tread depth information for the left tire is listed first, for the right tire it is listed second on the axle in the direction of travel.



Equipment

Standard equipment

- Screw-in towing eye front/rear
- Driver's side airbag
- ATTENTION ASSIST
- Outdoor temperature display
- Battery: fleece battery 12 V / 92 Ah
- Hill start assist
- third brake light
- COC documents
- Diesel particulate filter
- Electrical components for trailer socket
- Driving light assistant
- Chassis: Standard chassis
- electric parking brake
- Generator management
- Transmission: 9G-TRONIC
- Seatbelt warning device for front passenger seat
- Lockable glove box
- Boot lid
- Interior trim of cargo area, side
- Tempmatic controlled air conditioning
- Comfort closing
- Headrests (2), front
- Paint finish: Solid color paint
- Steering wheel: Multifunction steering wheel
- Mercedes-Benz emergency call system
- Package: BlueEFFICIENCY
- Upholstery: Caluma fabric, black
- Radio: MBUX multimedia system
- Tires: 225/55R17
- Tires: Summer tires
- Wheels: Premium complete wheel protection
- High-resolution reversing camera with guide lines
- Headlights: halogen technology
- Key: Multi-button remote control
- electromechanical power steering
- Seat: Lumbar support driver's seat
- Seats: Comfort passenger seat
- Seats: Passenger seat cushion depth adjustment
- Lane Keeping Assist active
- 12V socket
- Blind Spot Assist
- Updates to the intelligent speed assistant
- Pre-installation for Remote Services Plus
- ASSYST maintenance interval indicator
- Heat-insulating glass all around
- Registration as a truck
- Passenger side airbag
- Towing capacity 0 kg/lbs
- Electrically adjustable and heated exterior mirrors, left and right
- Fixing points in the roof frame
- Brake assist, active
- Brake lights, adaptive
- Front cupholder
- Electronic tachometer
- Electronic Stability Program (ADAPTIVE ESP) with integrated Anti-lock Braking System (ABS)
- Electric windows, driver/passenger
- Generator 14 V / 250 A
- Speed limit 210 km/h
- Weight variant 2,800 kg
- Seatbelt warning device for driver's seat
- Rear camera not foldable
- HOLD function
- Intelligent speed assistant
- Instrument cluster with color display
- Communication module (LTE) for digital services
- Large fuel tank, approx. 70 liters
- Steering wheel adjustable for tilt and height
- Headlight range control
- Navigation: Navigation pre-installation
- Breakdown management
- Radio: Digital Radio DAB
- Full wheel cover
- Tires: Tires without specified make
- Tire pressure monitoring
- Wheels: Steel rims 6.5 J x 17
- Electric suction fan, power level 5
- Sliding door on the right, cargo/passenger compartment
- Crosswind Assist
- Seat: Lumbar support, passenger seat
- Seats: Driver's seat Plus with flat seat surface
- Seats: Comfort driver's seat
- Seats: Driver's seat cushion depth adjustment
- Start-stop function
- Cruise control
- continuous partition wall
- First aid kit
- Warning triangle
- Immobiliser
- Central locking with radio remote control



Extra equipment

- Towing capacity 2500 kg
- Wooden floor (cargo area)
- Paint finish: Metallic
- LED light strip in the cargo area
- Package: Parking package with reversing camera (12 ultrasonic sensors (6 in the front and 6 in the rear bumper) - reversing camera - PARKTRONIC with active parking assist - Rear Cross Traffic Alert - Maneuvering brake - Drive Away Assist)
- Bumpers painted in body color
- All-weather floor mats with high surrounding edge
- Interior lining of the cargo area up to roof height (wood)
- Load anchoring rail system
- Multibeam LED with High Beam Assist PLUS
- Package: Winter Package (heated seats for driver and passenger seats - heated windshield washer nozzles - heated steering wheel)
- Rear door: Rear swing doors, opening to side wall
- Seats: Passenger seat, two-seater
- Phone: Smartphone integration package

Brief expert findings

Documents submitted	At the time of the inspection, the vehicle registration certificate Part 2 (title) was available, but the vehicle registration certificate Part 1 (document) was not. (Copy)
VIN comparison	The vehicle identification number (VIN) was read from the vehicle and its conformity with the submitted documents was confirmed by the undersigned during the inspection.
Inspection	The inspection conditions were sufficient for the assessment of the vehicle. Lifting equipment and/or a pit were available for examining the vehicle.
Test drive	No test drive/shunting maneuver was carried out during the inspection of the vehicle.
Engine function test	An engine test run was performed.
readiness to drive	The vehicle was roadworthy at the time of inspection.

Value reducing factors

No.	Component group	Description
1	Wheel / tyres	Wheel cover - rear right side - Scratch(es) - Replace
2	Sill - left side	Jacking point - front - Missing - Replace
3	Door - front right side	Door edge - Scratch(es) - Smart repair
4	Side panel - rear right side	Mudguard - rear right side - Stone chips - Smart repair
5	Door - front left side	Door edge - Scratch(es) - Smart repair
6	Front bumper	Front bumper - Scratch(es) - Paint
7	Rear bumper	Rear bumper - Scratch(es) - Paint
8	Side panel - rear left side	Side panel - Dent / paintcoat damage - Repair and paint

Paint coat thickness measurement

Roof	108 µm	Roof rail - left side	105 µm
Roof rail - right side	120 µm	Boot lid / rear door	89 µm
Mudguard - left side	99 µm	Mudguard - right side	99 µm
Bonnet	102 µm	Side panel - rear left side	99 µm
Side panel - rear right side	98 µm	Door - rear left side	95 µm
Door - rear right side	92 µm	Door - front left side	92 µm
Door - front right side	96 µm		



Order/Scope of Order

An order was placed to prepare a sales report for the described vehicle. This report includes the following:

- Description of key vehicle information
- Documentation of equipment features
(Delivery by third-party service providers)
- Documentation of damage, defects, missing parts
- Documentation of prior damage, unrepaired prior damage, repainting
- A brief visual or functional inspection of the equipment details, if possible.
(Functional testing of driver assistance systems is not included in the scope of services!)
- a photographic documentation of the vehicle

Basis for the order

This product is based on the guidelines for vehicle returns and valuations published by Alphabet Fleet GmbH. The expert makes the specific findings in each individual case objectively, within the framework of the prescribed standards, based on their own expertise.

The vehicle inspection takes place in a fully assembled, unassembled state.

Damage or defects that can only be detected during disassembly/diagnostic work or through further investigation remain within the realm of prognostic risk. An increased risk exists due to concealed defects caused by fraudulent misrepresentation and which were not identifiable by the expert.

Damage or defects resulting from normal use or wear and tear of the vehicle will be accepted in accordance with the applicable standard.

There was no explicit identification or monetary consideration of the expected features within the product.

Features which, in their nature and extent, slightly exceed normal use but do not constitute unacceptable damage, will be documented and indicated as signs of wear, if applicable.

Damage or defects that, according to the applicable standard, can no longer be attributed to normal use or wear and tear are listed under "Value Reducing Factors" in the product description.

Depending on the product specification, a monetary ID can be provided. If this takes place, the costs can be 100% d or pro rata depending on the vehicle's age and mileage.

Previous damages

No apparent prior damage that had been repaired could be found on the vehicle.

Comments

- Ex STAR CAR Mietfahrzeug.



Figure 1: Diagonal front (left)



Figure 2: Diagonal front (right)



Figure 3: Diagonal rear (left)



Figure 4: Diagonal rear (right)



Figure 5: Interior - front



Figure 6: Interior - rear



Figure 7: Instrument cluster



Figure 8: Instrument panel



Figure 9: Interior 360° view



Figure 10: Cargo area



Figure 11: VIN



Figure 12: Mounted tyres



Figure 13: Documents



Figure 14: Misc.

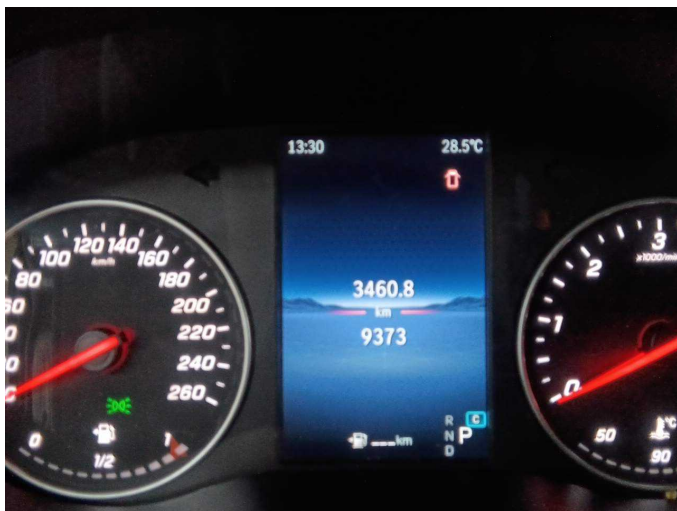


Figure 15: Misc.



Figure 16: Misc.



Figure 17: Misc.



Figure 18: Misc.



Figure 19: Misc.



Figure 20: Misc.



Figure 21: Misc.



Figure 22: Misc.



Figure 23: Misc.



Figure 24: Misc.



Figure 25: Misc.



Figure 26: Misc.

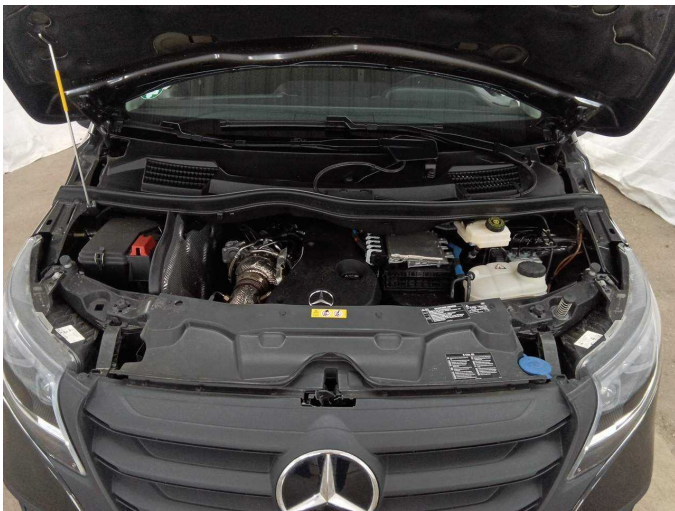


Figure 27: Misc.



Figure 28: Misc.

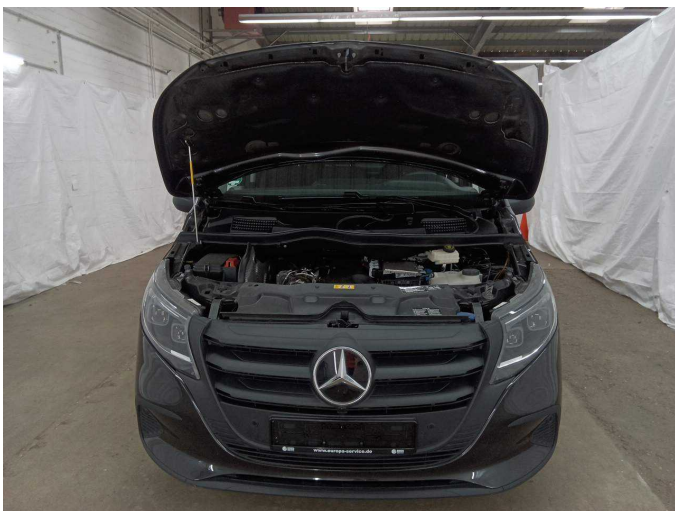


Figure 29: Misc.



Figure 30: Misc.



Figure 31: Misc.



Figure 32: Misc.



Figure 33: Misc.



Figure 34: Misc.



Damage 1: Wheel / tyres: Wheel cover - rear right side - Scratch(es) - Replace



Damage 1: Wheel / tyres: Wheel cover - rear right side - Scratch(es) - Replace



Damage 2: Sill - left side: Jacking point - front - Missing - Replace



Damage 3: Door - front right side: Door edge - Scratch(es) - Smart repair



Damage 3: Door - front right side: Door edge - Scratch(es) - Smart repair



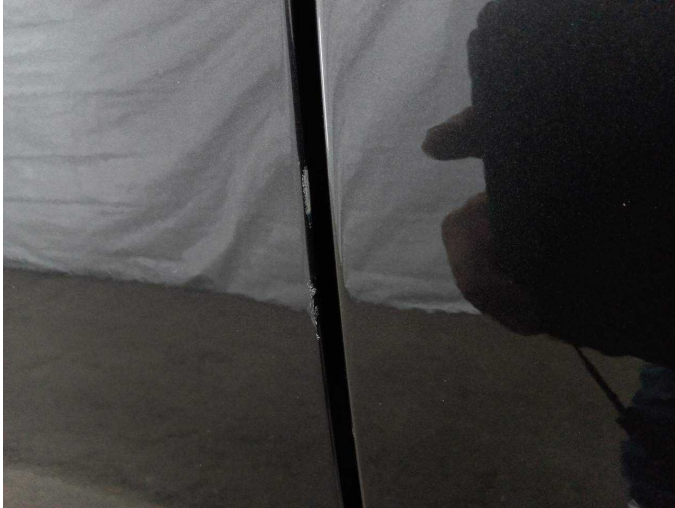
Damage 4: Side panel - rear right side: Mudguard - rear right side - Stone chips - Smart repair



Damage 4: Side panel - rear right side: Mudguard - rear right side - Stone chips - Smart repair



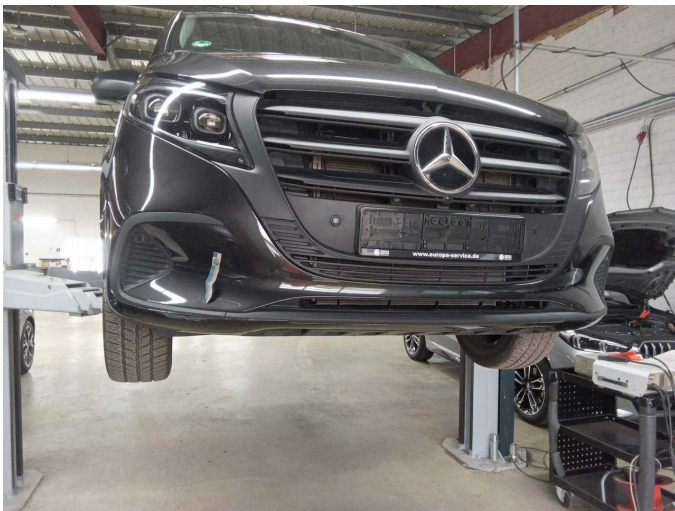
Damage 5: Door - front left side: Door edge - Scratch(es) - Smart repair



Damage 5: Door - front left side: Door edge - Scratch(es) - Smart repair



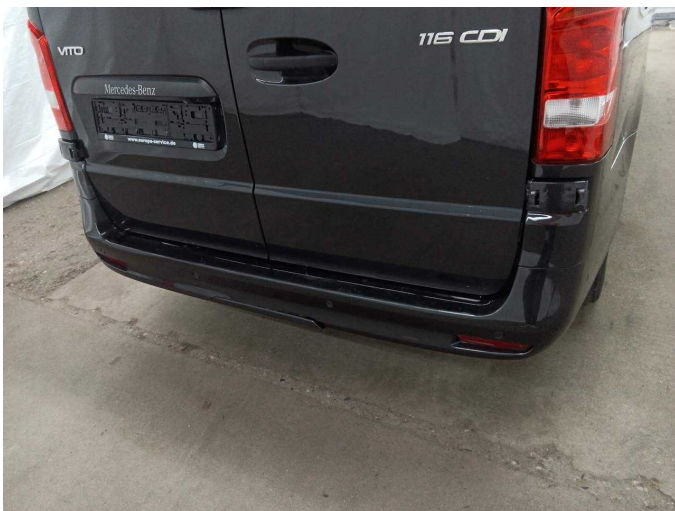
Damage 5: Door - front left side: Door edge - Scratch(es) - Smart repair



Damage 6: Front bumper: Front bumper - Scratch(es) - Paint



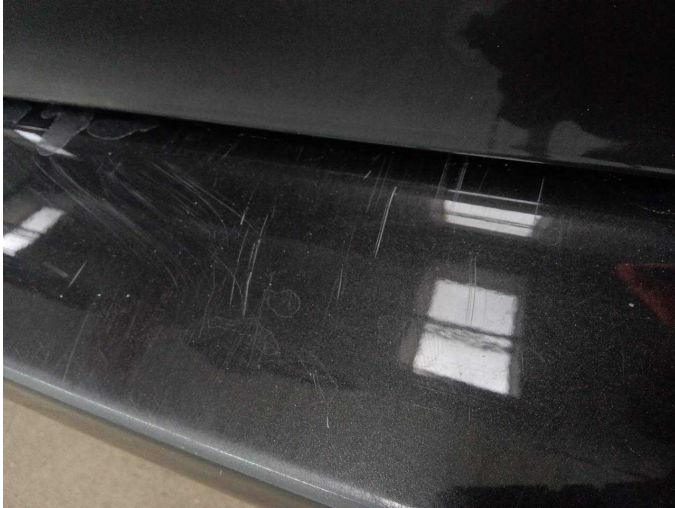
Damage 6: Front bumper: Front bumper - Scratch(es) - Paint



Damage 7: Rear bumper: Rear bumper - Scratch(es) - Paint



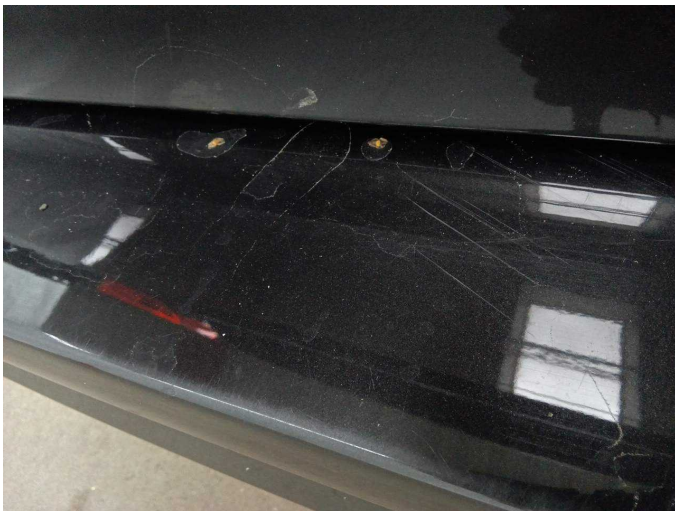
Damage 7: Rear bumper: Rear bumper - Scratch(es) - Paint



Damage 7: Rear bumper: Rear bumper - Scratch(es) - Paint



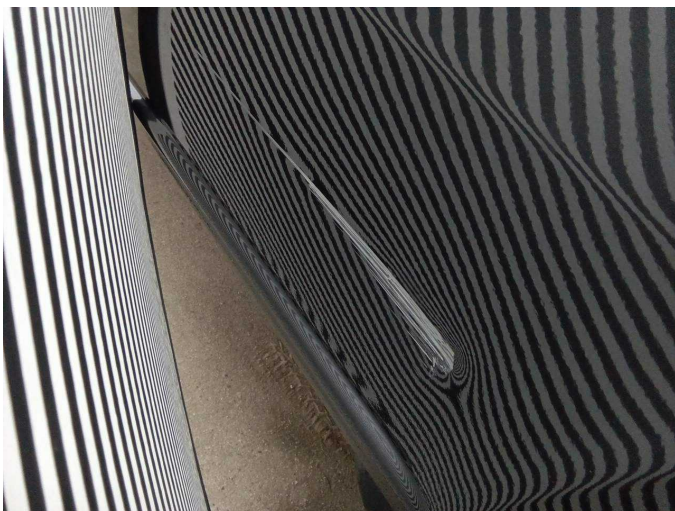
Damage 7: Rear bumper: Rear bumper - Scratch(es) - Paint



Damage 7: Rear bumper: Rear bumper - Scratch(es) - Paint



Damage 8: Side panel - rear left side: Side panel - Dent / paintcoat damage - Repair and paint



Damage 8: Side panel - rear left side: Side panel - Dent / paintcoat damage - Repair and paint



Damage 8: Side panel - rear left side: Side panel - Dent / paintcoat damage - Repair and paint