

Expertise

Protocol number: 46011736
Order No. / Reference: 26412761
Inspection date: 18 Jun 2026

Manufacturer: Ford

Model: Focus Turnier 1.5 EcoBlue Start-Stopp-System Aut. TITANIUM

VIN: WF0PXXGCHPPL83339



Vehicle details

Manufacturer / Type / Model / Equipment

Ford Focus Turnier 1.5 EcoBlue Start-Stopp-System Aut. TITANIUM

Vehicle Identification number WF0PXXGCHPPL83339

Mileage (Read) 82,115 km

First registration 22 May 2023

Number of holders 1

Power / Engine displacement 85 kw / 1,499 ccm

Fuel type / Cylinder Diesel / 4

Gearbox / Number of gears Automatic / 8

Type of drive Front drive

Type of vehicle Station wagon

Colour / colour code Chrome Blue Metallic

Doors / Seats 5 / 5

Upholstery type Cloth

Colour of upholstery Anthracite-Black



Vehicle details

Maintenance booklet / proof	digital proof / complete	Next maintenance in	62 %
Last service on / at	12/2025 at 82,075 km		
Key is / should be	2 / 2	FZG documents	ZB#2 (B) was available (copy), ZB#1 (S) was not available.
		Letter No.	GT913441
Previous damage / Accident	Detectable	Repainting	Detectable
Inspection conditions	sufficient	Lifting equipment / pit	yes
Test drive	Not performed	Engine function test	Performed
Manufacturer key number/ type code number	8566 / BYE 00002		
Emission standard	EURO6;WLTP;AP;PI/CI; M, N1 I	fine dust sticker	
Permitted total weight	2,035 kg	Empty weight	

Tyres

Mounted tyres

#	Tyre size	Type of tyre	Manufacturer	Tread depth
1)	205/60 R16 92V	Summer tyres on Steel rim with wheel cover	Goodyear	5mm / 5mm
2)	205/60 R16 92V	Summer tyres on Steel rim with wheel cover	Goodyear	5mm / 5mm

Replacement

Typ	Tyre size	Type of tyre	Manufacturer	Tread depth
	Tirefit	Expiration date 05/2027		

Legend: Tread depth information for the left tire is listed first, for the right tire it is listed second on the axle in the direction of travel.



Equipment

Standard equipment

- Airbag: Passenger airbag deactivation
- Exterior mirrors painted in body color, electrically adjustable, heated and foldable
- Tires: 6.5 J x 16 design wheels (4) with 205/60 R16 tires
- Hill start assist
- Roof rails, aluminum
- Diesel particulate filter (DPF)
- Electronic Shifter
- Driver information system with on-board computer, color (10.7 cm screen diagonal)
- Electric parking brake with auto-hold function
- FordPass Connect including live traffic information
- Luggage compartment lighting
- Cruise control
- Illuminated glove compartment
- rear window wiper
- Interior mirror, automatically dimming
- Isofix bracket
- Headrests: 2 front and 3 rear, height adjustable
- LED taillights
- Steering wheel: 3-spoke design
- Make-up mirrors in driver and passenger sun visors
- MyKey key system (individually programmable second key)
- Emergency call assistant
- Front and rear parking pilot system
- Post-Collision Assist
- Tire repair kit
- Windscreen wipers with rain sensor (sensitivity adjustable)
- Headlight assistant with day/night sensor
- Electromechanical speed-dependent power steering
- Seats: Driver's seat height adjustable
- Seats: Front sports seats with enhanced lateral support
- 12-volt power outlet in the luggage compartment
- Variable radiator air intake
- Warning system for unfastened seat belts for the 1st and 2nd rows of seats

Extra equipment

- Paint finish: Metallic
- Side windows from the 2nd row of seats and rear window, dark tinted.

- Anti-lock braking system (ABS) with electronic brake force distribution (EBD)
- Attachment points behind the second row of seats for mounting the safety partition net
- Fabric headliner
- Roof spoiler painted in car color
- Tachometer
- Electronic Safety and Stability Program (ESP)
- Lane keeping assist including lane keeping assist
- Electric windows front and rear
- Ford Power Start function
- Luggage compartment cover
- Speed limiter
- Transmission: 8-speed automatic transmission
- Back window, heater
- Interior lighting with LED technology
- Intelligent security system
- Air conditioning with automatic temperature control
- Paint finish: Solid
- LED headlights
- Adjustable steering column
- Center console "Premium" front
- Navigation: Ford SYNC 4 including Ford navigation system with AppLink, 13.2" touchscreen and DAB/DAB+
- Upholstery: Cloth
- Pre-Collision Assist
- Tire Pressure Monitoring System (TMPS)
- Headlight low beam
- Selective driving mode switch
- Seats: Passenger seat height-adjustable, manually
- Seats: Rear seat backrest
- Start-stop system
- Carpet floor mats in the front
- Lashing eyes in the luggage compartment
- Electronic immobilizer
- Central locking with remote control and remote luggage compartment release

- Package: Winter (heated windscreen - heated steering wheel - individually and variably heated front seats)
- Safety partition net for luggage compartment



Brief expert findings

Documents submitted	At the time of the inspection, the vehicle registration certificate Part 2 (title) was available, but the vehicle registration certificate Part 1 (document) was not. (Copy)
VIN comparison	The vehicle identification number (VIN) was read from the vehicle and its conformity with the submitted documents was confirmed by the undersigned during the inspection.
Inspection	The inspection conditions were sufficient for the assessment of the vehicle. Lifting equipment and/or a pit were available for examining the vehicle.
Test drive	No test drive/shunting maneuver was carried out during the inspection of the vehicle.
Engine function test	An engine test run was performed.

Value reducing factors

No.	Component group	Description
1	Bonnet	Insulation lining - Damage caused by marten / rodent - Replace
2	Side panel - rear right side	Side panel - Scratch(es) - Smart repair
3	Trim / covers	Boot lid - interior trim - Broken / torn - Replace
4	Front bumper	Front bumper (+ Steinschläge) - Scratch(es) - Paint
5	Door - front left side	Door - Scratch(es) - Paint
6	Door - front right side	Door - Scratch(es) - Paint

Wear and tear

No.	Component group	Description
1	Bonnet	Bonnet - dent(s) - No deduction

The vehicle shows signs of wear and tear commensurate with its age and use.

Missing parts

Description

Documents - Service book
Engine - Engine cover

Previous damages

No.	Previous damage	Extent of damage (Net)
1	Front, Professionally repaired, Invoice of repair done Non-existent	

Repainting

No. Repainting

1 Bonnet, Professionally carried out, Invoice of repair done Non-existent

Paint coat thickness measurement

Bonnet 313 μm |



Order/Scope of Order

An order was placed to prepare a sales report for the described vehicle. This report includes the following:

- Description of key vehicle information
- Documentation of equipment features
(Delivery by third-party service providers)
- Documentation of damage, defects, missing parts
- Documentation of prior damage, unrepaired prior damage, repainting
- A brief visual or functional inspection of the equipment details, if possible.
(Functional testing of driver assistance systems is not included in the scope of services!)
- a photographic documentation of the vehicle

Basis for the order

This product is based on the guidelines for vehicle returns and valuations published by Alphabet Fleet GmbH. The expert makes the specific findings in each individual case objectively, within the framework of the prescribed standards, based on their own expertise.

The vehicle inspection takes place in a fully assembled, unassembled state.

Damage or defects that can only be detected during disassembly/diagnostic work or through further investigation remain within the realm of prognostic risk. An increased risk exists due to concealed defects caused by fraudulent misrepresentation and which were not identifiable by the expert.

Damage or defects resulting from normal use or wear and tear of the vehicle will be accepted in accordance with the applicable standard.

There was no explicit identification or monetary consideration of the expected features within the product.

Features which, in their nature and extent, slightly exceed normal use but do not constitute unacceptable damage, will be documented and indicated as signs of wear, if applicable.

Damage or defects that, according to the applicable standard, can no longer be attributed to normal use or wear and tear are listed under "Value Reducing Factors" in the product description.

Depending on the product specification, a monetary ID can be provided. If this takes place, the costs can be 100% d or pro rata depending on the vehicle's age and mileage.

Previous damages

Professionally repaired previous damages were found at the vehicle.

Comments

Wartungshistorie gemäß Auftraggeber Informationen.



Figure 1: Diagonal front (left)



Figure 2: Diagonal front (right)



Figure 3: Diagonal rear (left)



Figure 4: Diagonal rear (right)

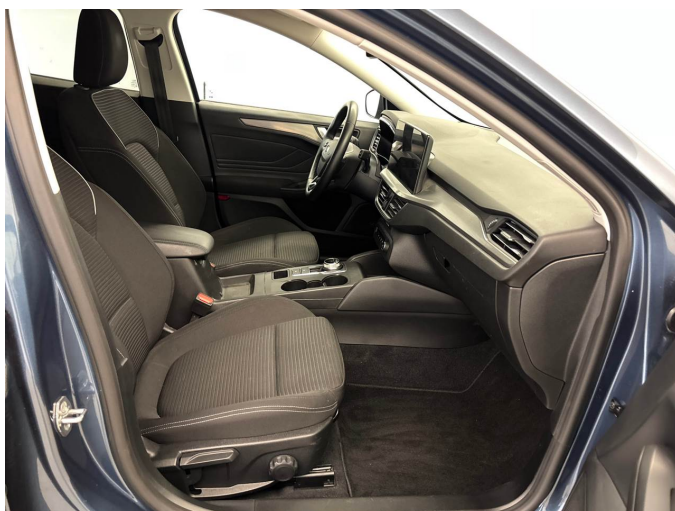


Figure 5: Interior - front

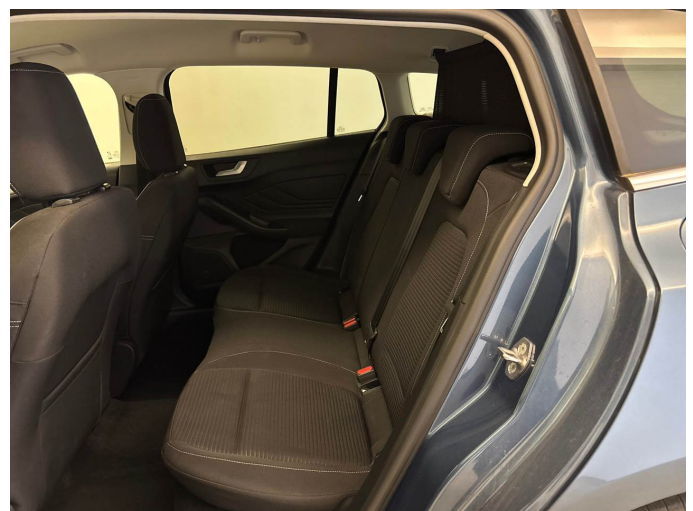


Figure 6: Interior - rear



Figure 7: Instrument cluster



Figure 8: Instrument panel



Figure 9: Interior 360° view



Figure 10: Cargo area



Figure 11: VIN



Figure 12: Mounted tyres

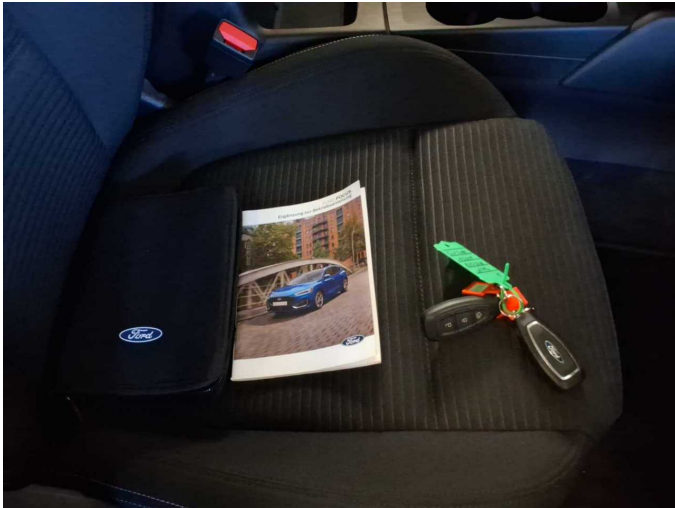


Figure 13: Documents



Figure 14: Navigation



Figure 15: Misc.



Figure 16: Misc.



Figure 17: Misc.



Figure 18: Misc.



Figure 19: Misc.



Figure 20: Misc.



Figure 21: Misc.



Figure 22: Misc.

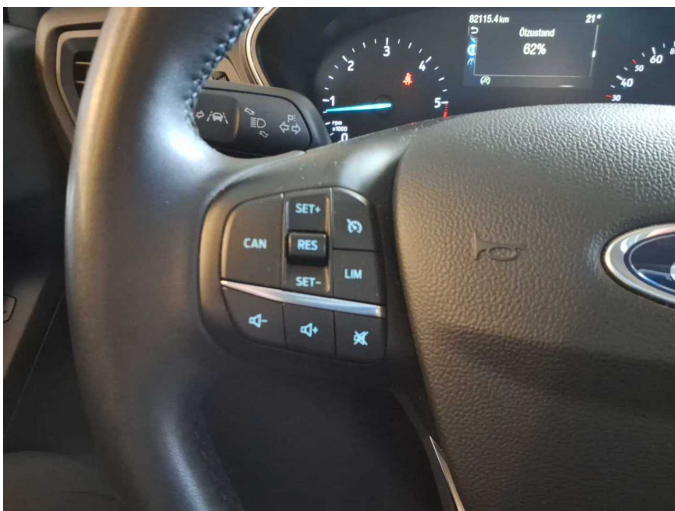


Figure 23: Misc.

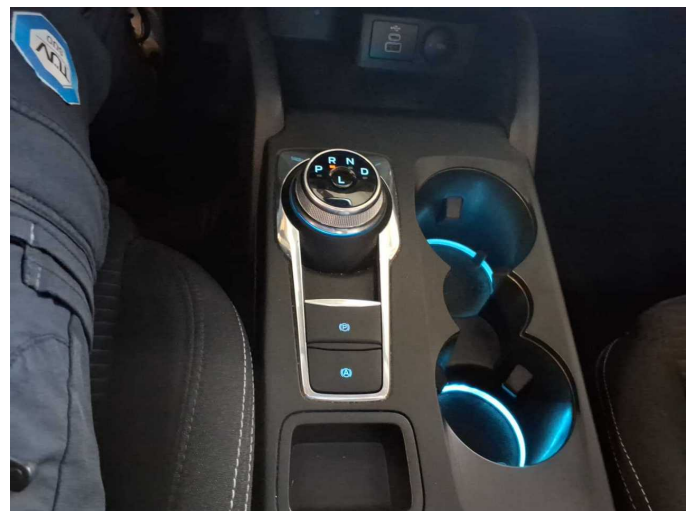


Figure 24: Misc.



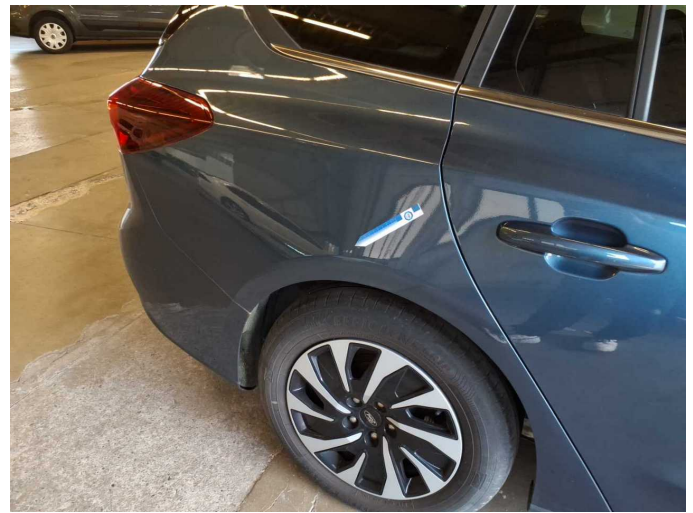
Figure 25: Misc.



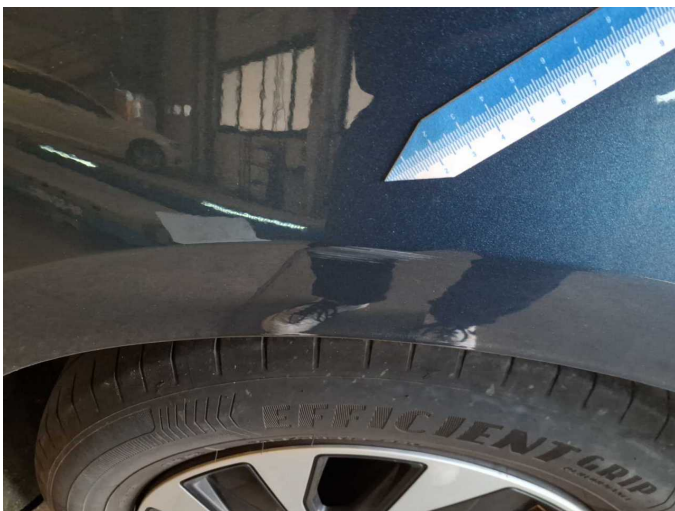
Figure 26: Misc.



Damage 1: Bonnet: Insulation lining - Damage caused by marten / rodent - Replace



Damage 2: Side panel - rear right side: Side panel - Scratch(es) - Smart repair



Damage 2: Side panel - rear right side: Side panel - Scratch(es) - Smart repair



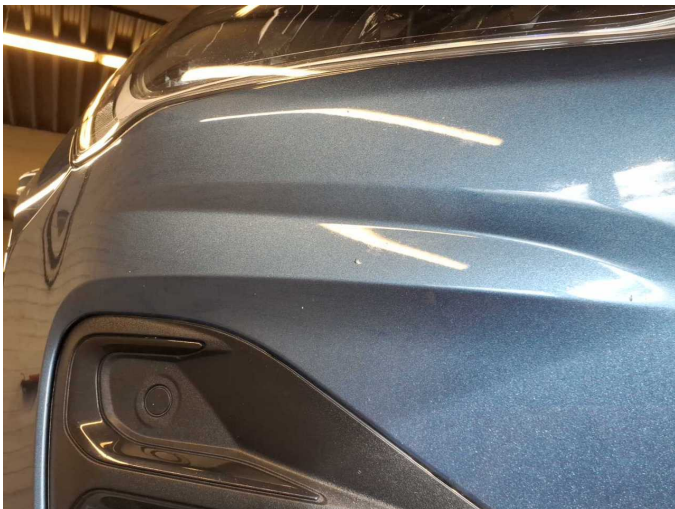
Damage 3: Trim / covers: Boot lid - interior trim - Broken / torn - Replace



Damage 3: Trim / covers: Boot lid - interior trim - Broken / torn - Replace



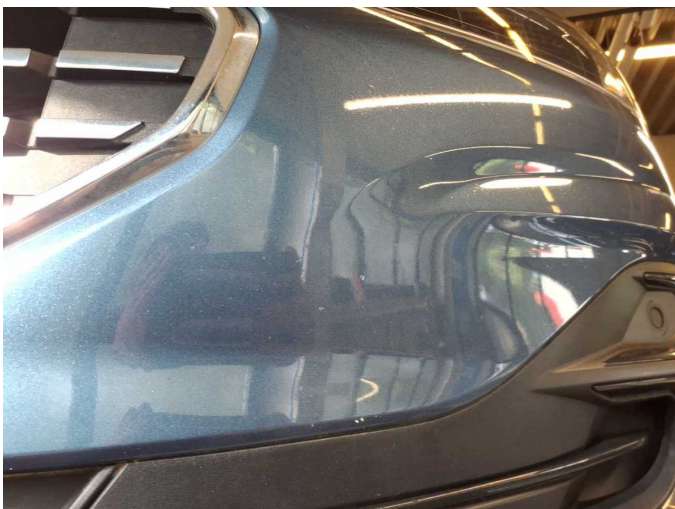
Damage 4: Front bumper: Front bumper (+ Steinschläge) - Scratch(es) - Paint



Damage 4: Front bumper: Front bumper (+ Steinschläge) - Scratch(es) - Paint



Damage 4: Front bumper: Front bumper (+ Steinschläge) - Scratch(es) - Paint



Damage 4: Front bumper: Front bumper (+ Steinschläge) - Scratch(es) - Paint



Damage 5: Door - front left side: Door - Scratch(es) - Paint



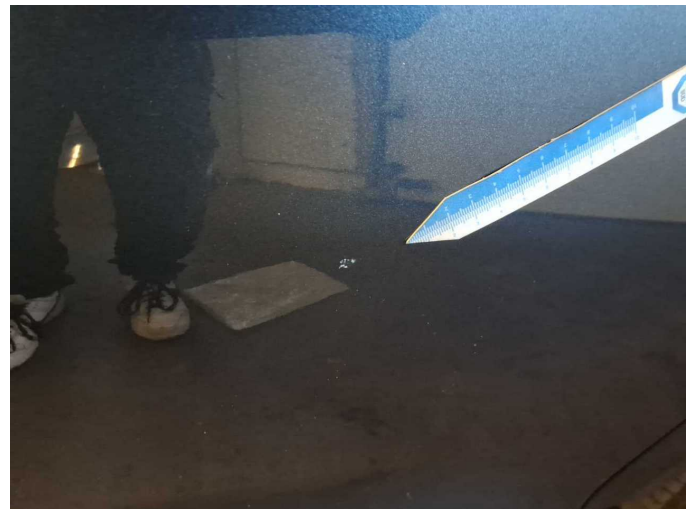
Damage 5: Door - front left side: Door - Scratch(es) - Paint



Damage 6: Door - front right side: Door - Scratch(es) - Paint



Damage 6: Door - front right side: Door - Scratch(es) - Paint



Damage 6: Door - front right side: Door - Scratch(es) - Paint



Missing part 2: Engine: Engine cover - Missing - Replace



Repainting 1: Bonnet



Wartungshistorie

(gemäß Auftraggeber Informationen)

Fahrgestellnummer: WF0PXXGCHPPL83339

Hersteller / Modell: FORD FORD Focus Turnier 1.5 EcoBlue Start-Stopp-System Aut.
TITANIUM

Datum	KM-Stand	Beschreibung
12.12.2025	82.075	Motoröl b. Wartung; Ölfilter ern; Ölwechsel; Wartung Sonstiges
23.05.2025	63.355	Kraftstofffilter ern; Luftfiltereinsatz ern; Motoröl b. Wartung; Ölfilter ern; Regelwartungsdienst; Wartung Sonstiges
11.09.2024	45.855	Motoröl b. Wartung; Ölfilter ern; Regelwartungsdienst; Wartung Sonstiges