

Expertise

Protocol number: 46209899
Order No. / Reference: 26566489
Inspection date: 26 Jun 2026

Manufacturer: Volvo

Model: XC60 B4 D Geartronic Momentum Pro

VIN: YV1UZK5VDM1769677



Vehicle details

Manufacturer / Type / Model / Equipment

Volvo XC60 B4 D Geartronic Momentum Pro

Vehicle Identification number	YV1UZK5VDM1769677
Mileage (Read)	80,393 km
First registration	4 Jan 2021
Number of holders	1
Next periodical technical inspection	02/2028 (Report not on hand)

Power / Engine displacement	145 kw / 1,969 ccm
Fuel type / Cylinder	Hybrid Diesel / E / 4
Gearbox / Number of gears	Automatic / 8
Type of drive	Front drive
Type of vehicle	SUV

Colour / colour code	Denim Blau-Metallic
Doors / Seats	5 / 5
Upholstery type	Cloth / leather combination
Colour of upholstery	Black



Vehicle details

Maintenance booklet / proof	digital evidence / incomplete	Next maintenance in	29,641 km
Last service on / at	02/2026 at 80,034 km		
Key is / should be	2 / 2	FZG documents	ZB#2 (B) was available (copy), ZB#1 (S) was not available.
		Letter No.	FX809578
Previous damage / Accident	Detectable	Repainting	Detectable
Inspection conditions	sufficient	Lifting equipment / pit	yes
Test drive	Not performed	Engine function test	Performed
Manufacturer key number/ type code number	9101 / BTJ 00001		
Emission standard	EURO6;WLTP;AP;PI/CI; M, N1 I	fine dust sticker	
Permitted total weight	2,460 kg	Empty weight	

Tyres

Mounted tyres

#	Tyre size	Type of tyre	Manufacturer	Tread depth
1)	235/60 R18 107V	Summer tyres on Light alloy	Continental	5mm / 4mm
2)	235/60 R18 107V	Summer tyres on Light alloy	Continental	4mm / 5mm

Replacement

Typ	Tyre size	Type of tyre	Manufacturer	Tread depth
	Tirefit	Expiration date 12/2024		

Legend: Tread depth information for the left tire is listed first, for the right tire it is listed second on the axle in the direction of travel.

TÜV SÜD Auto Partner GmbH
Wiesenring 2
04159 Leipzig

Inspection location
Hartmann Fleet Professionals GmbH
Leerenstraße 25
29683 Bad Fallingbommel



Equipment



Standard equipment

- ABS - Anti-lock Braking System (with EBV)
- Passenger side airbag can be deactivated
- Airbag, driver's knee airbag
- Android infotainment system (9" touchscreen (22.9 cm diagonal) - Bluetooth hands-free system incl. audio streaming - Digital vehicle owner's manual - Digital radio reception (DAB+) - 2 USB ports (compatible with Apple iPod/iPhone/iPad)
- Hill Descent Control (HDC)
- Fog sensor for automatic activation of the defroster function
- On-board computer (with vehicle control functions)
- Chrome trim on the side windows
- Roof edge spoiler
- Black roof rails (integrated)
- Diesel particulate filter
- Drive Mode (driving mode settings for engine, transmission, steering, brakes and suspension: Comfort, Eco, Dynamic, Off Road, Individual)
- Rear parking assist with automatic braking intervention (rear)
- Electronic differential lock
- Front grille in waterfall design in high-gloss black
- Luggage compartment partition net
- Transmission: 8-speed Geartronic automatic transmission
- Automatic tailgate (electric)
- Heated rear window
- IDIS - Intelligent Driver Information System (delays incoming calls or vehicle information in potentially dangerous situations)
- ISOFIX mounting for the outer rear seats
- Keyless Drive (electronic access system) with sensor-controlled tailgate, illuminated door handles and puddle lights
- Child safety lock (rear doors)
- Headrests (5) front and rear
- Rear headrests foldable (electrically)
- Charging box under the cargo floor
- Cargo area roller blind
- LED headlights "Thor's Hammer" with high beam assist and integrated LED daytime running lights
- Illuminated makeup mirror for driver and front passenger
- Front center armrest with integrated storage compartment and cup holders
- Electric parking brake
- Upholstery: Textile comfort seats
- Radio accessories: Digital radio reception (DAB+)
- Radio accessories: Two USB-C ports on the back of the center console
- Run-off Road Protection (preventive protection system in case of unintentional leaving the road or impending rollovers including pre-activation of the seat belt tensioners, deactivation of the battery (plug-in hybrid only) and door unlocking)
- Rear seats in a 40/60 split or completely foldable with pass-through function
- Driver and passenger side airbags with two-stage deployment system
- Airbag, side airbags for driver and front passenger and head/shoulder airbags (iC) for all occupants
- Electrically folding exterior mirrors
- Electrically adjustable and heated exterior mirrors, left and right
- Outdoor temperature display
- Hill Start Assist (HSA)
- LED turn signals integrated into the exterior mirrors
- third brake light
- CleanZone air quality system with activated carbon filter (automatic recirculation and pre-ventilation of the interior when the vehicle is unlocked)
- Digital instrumentation (12.3" full graphic display (31.2 cm diagonal) with two variable round instruments and information display (e.g. for navigation map view))
- Aluminum inlay Iron Ore
- Aluminum door sill plates with Volvo lettering at the front
- Electronic Stability Control (ESC)
- Electric windows front and rear (with auto-down and auto-up function)
- Cruise control system (and variable speed limiter)
- Google Services with navigation (navigation via Google Maps, Google Assistant, Google Play Store and unlimited data (includes data for map updates, app downloads and streaming services) for the first 4 years)
- Interior and exterior mirrors automatically dimming
- Interior lighting (headliner, front reading lights, front ambient lighting, front footwell, storage compartment behind center console, glove compartment and luggage compartment)
- Keyless Start (electronic engine start system)
- Automatic climate control with separate temperature control for driver and front passenger (and additional air vents for the 2nd row of seats (integrated in the B-pillar))
- Stainless steel loading sill protector in the luggage compartment
- Steering wheel adjustable for height and reach
- Steering wheel: Multifunction buttons on the steering wheel
- Rear center armrest (foldable) (with cup holders)
- Emergency brake lights (brake lights flash rapidly during heavy deceleration; hazard warning lights are automatically activated at speeds below 10 km/h)
- Radio: Audio system High Performance Sound (330 watts of power - 10 speakers)
- Rain sensor
- Tire pressure monitoring system (with tire-specific pressure loss warning)
- Wheels: 18" 5-spoke alloy wheels (235/60 R18 tires with 7.5 x 18" rims)
- Wheels: Tire sealant (Incl. 12-volt compressor, maximum speed 80 km/h)



- Speed-sensitive power steering
- Safety braking system with disc brakes all around (internally ventilated) (automatic brake system pre-tensioning, brake assist and automatic hold function)
- Seat belts (active seat belts with belt tensioners, pre-activation of the belt tensioners only in conjunction with IntelliSafe Surround - belt height adjustment front - warning tone/indication when seat belts are not fastened (for all seats))
- Seats: Lumbar support (2-way adjustable) for driver and front passenger seats
- 12-volt socket at the front
- Phone: Inductive smartphone charging system (Wirelessly charges smartphones that support the Qi standard on a charging pad)
- Preparation for Trailer Stability Assist (TSA)
- WHIPS whiplash protection system (including immersion protection on all seats and energy-absorbing front seat cushions)

- Safety Assistance (Automatic Emergency Braking System - Connected Safety - Driver Alert - Attention Warning - Distance Warning (only in conjunction with Head-up Display) - Variable Speed Limiter - Cruise Control - Lane Keeping Aid (LKA) - Active Lane Keeping Assist - Oncoming Lane Mitigation - Ready to Drive Notification - Road Edge Detection - Road Sign Information (RSI) - Traffic Sign Recognition (only in conjunction with Navigation))
- Seats: Driver and front passenger seats height adjustable (electrically) (including manual tilt adjustment)
- Start/Stop technology
- Power outlet (12-volt connection in the luggage compartment)
- First aid kit and warning triangle
- Glazing: Colored glazing
- Lashing eyes in the luggage compartment (foldable)
- Immobiliser
- Central locking with two remote controls and integrated emergency keys (automatic locking of doors while driving (can be deactivated) - comfort opening/closing of side windows and, if applicable, sunroof via remote control - panic function integrated into the remote control)

Extra equipment

- Towbar (semi-electric)
- Package: Parking Assistance Package (front and rear parking aid - reversing camera)
- Panoramic glass sliding sunroof with lifting function (electric) (with integrated, continuously adjustable sunshade)

- Paint finish: Metallic paint
- Package: Winter Package (front seat heating - steering wheel heating)
- Upholstery: Textile/T-Tech comfort seats

Brief expert findings

Documents submitted	At the time of the inspection, the vehicle registration certificate Part 2 (title) was available, but the vehicle registration certificate Part 1 (document) was not. (Copy)
VIN comparison	The vehicle identification number (VIN) was read from the vehicle and its conformity with the submitted documents was confirmed by the undersigned during the inspection.
Inspection	The inspection conditions were sufficient for the assessment of the vehicle. Lifting equipment and/or a pit were available for examining the vehicle.
Test drive	No test drive/shunting maneuver was carried out during the inspection of the vehicle.
Engine function test	An engine test run was performed.



Value reducing factors

No.	Component group	Description
1	Screen cleaning	Wiper arm - rear (Kappe) - Missing - Replace
2	Equipment	Tirefit filler - Expired - Replace
3	Front bumper	Air-inlet grille - Loose - Repair
4	Bonnet	Bonnet - dent(s) - Smooth repair work
5	Mudguard - left side	Mudguard - left side - Scratch(es) - Smart repair
6	Side panel - rear left side	Side panel - Scratch(es) - Paint
7	Roof	Roof hatch / sliding roof - seal - Broken / torn - Replace
8	Door - rear right side	Door (Anätzung) - Paint defect - Repair and paint
9	Front bumper	Front bumper - Deformed - Replace
10	Headlight	Headlight - left side - Scratch(es) - Replace
11	Rear bumper	Rear bumper (Inklusive anbauteile) - Deformed - Replace

Wear and tear

No.	Component group	Description
1	Seat - front	Seat cover - left side - Scratch(es) - No deduction
2	Roof	Roof rail - right side - Scratch(es) - No deduction
3	Vehicle glazing	Windscreen - Stone chips - No deduction

The vehicle shows signs of wear and tear commensurate with its age and use.

Previous damages

No.	Previous damage	Extent of damage (Net)
1	Side right, Provided by user / customer, from 7 Feb 2022	2.840,42 €
2	Front, Side right, Provided by user / customer, from 25 Feb 2022	3.866,59 €

Repainting

No.	Repainting
1	Side panel - rear right side, Professionally carried out, Invoice of repair done Non-existent
2	Door - front right side, Professionally carried out, Invoice of repair done Non-existent

Paint coat thickness measurement

Side panel - rear right side	180 µm	Door - front right side	182 µm
------------------------------	--------	-------------------------	--------

Order/Scope of Order

An order was placed to prepare a sales report for the described vehicle. This report includes the following:

- Description of key vehicle information
- Documentation of equipment features
(*Delivery by third-party service providers*)
- Documentation of damage, defects, missing parts
- Documentation of prior damage, unrepaired prior damage, repainting
- A brief visual or functional inspection of the equipment details, if possible.
(*Functional testing of driver assistance systems is not included in the scope of services!*)
- a photographic documentation of the vehicle



Basis for the order

This product is based on the guidelines for vehicle returns and valuations published by Alphabet Fleet GmbH. The expert makes the specific findings in each individual case objectively, within the framework of the prescribed standards, based on their own expertise.

The vehicle inspection takes place in a fully assembled, unassembled state.

Damage or defects that can only be detected during disassembly/diagnostic work or through further investigation remain within the realm of prognostic risk. An increased risk exists due to concealed defects caused by fraudulent misrepresentation and which were not identifiable by the expert.

Damage or defects resulting from normal use or wear and tear of the vehicle will be accepted in accordance with the applicable standard.

There was no explicit identification or monetary consideration of the expected features within the product.

Features which, in their nature and extent, slightly exceed normal use but do not constitute unacceptable damage, will be documented and indicated as signs of wear, if applicable.

Damage or defects that, according to the applicable standard, can no longer be attributed to normal use or wear and tear are listed under "Value Reducing Factors" in the product description.

Depending on the product specification, a monetary ID can be provided. If this takes place, the costs can be 100% d or pro rata depending on the vehicle's age and mileage.

Previous damages

According to available information previous damages were repaired at the vehicle. Traces of repairs, which allow conclusions about the area of repair, were not recognizable during the inspection.



Figure 1: Diagonal front (left)



Figure 2: Diagonal front (right)



Figure 3: Diagonal rear (left)



Figure 4: Diagonal rear (right)



Figure 5: Interior - front



Figure 6: Interior - rear



Figure 7: Instrument cluster



Figure 8: Instrument panel



Figure 9: Interior 360° view



Figure 10: Cargo area



Figure 11: VIN



Figure 12: Mounted tyres



Figure 13: Documents

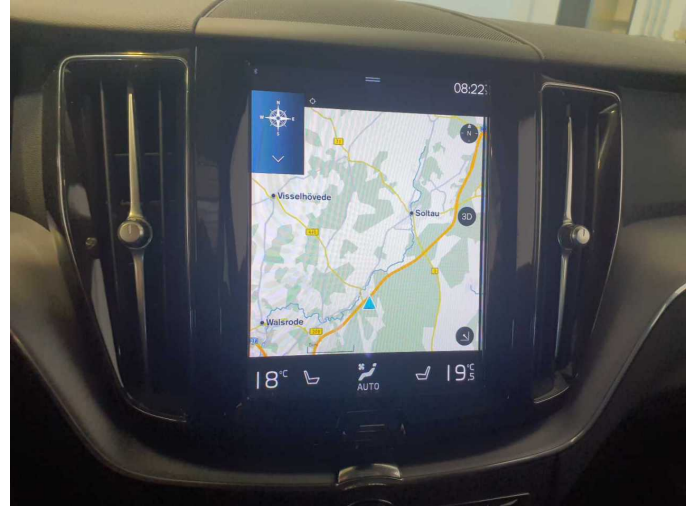


Figure 14: Navigation



Figure 15: Misc.



Figure 16: Misc.

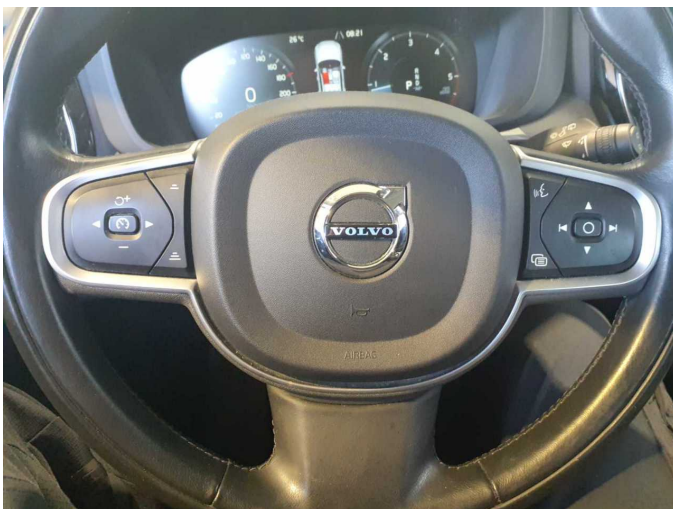


Figure 17: Misc.



Figure 18: Misc.



Figure 19: Misc.



Figure 20: Misc.

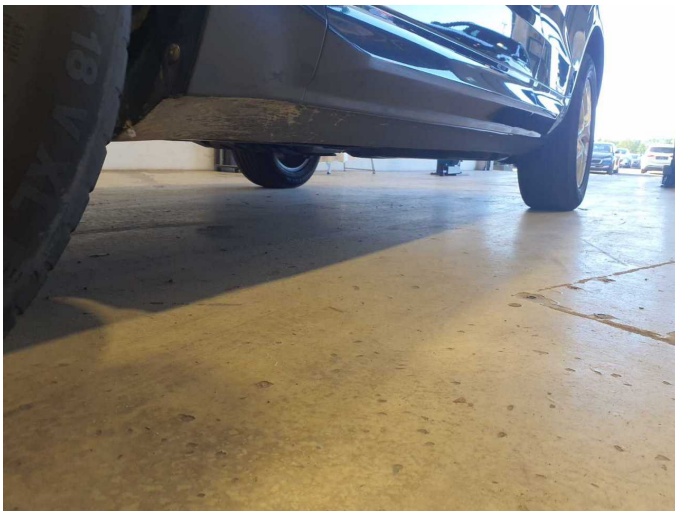


Figure 21: Misc.

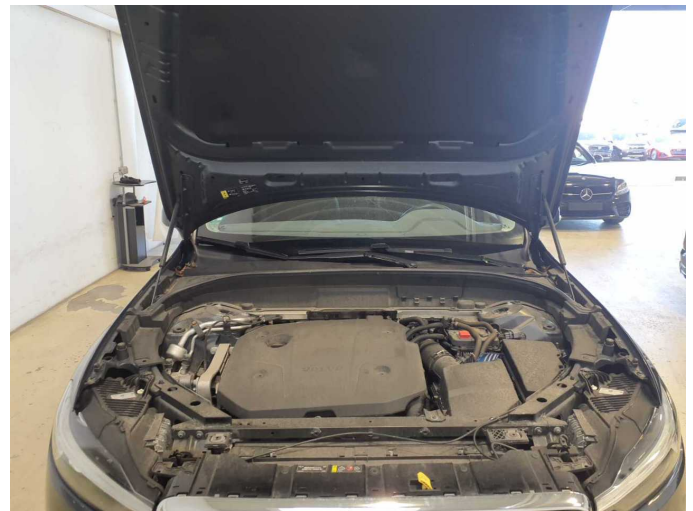


Figure 22: Misc.

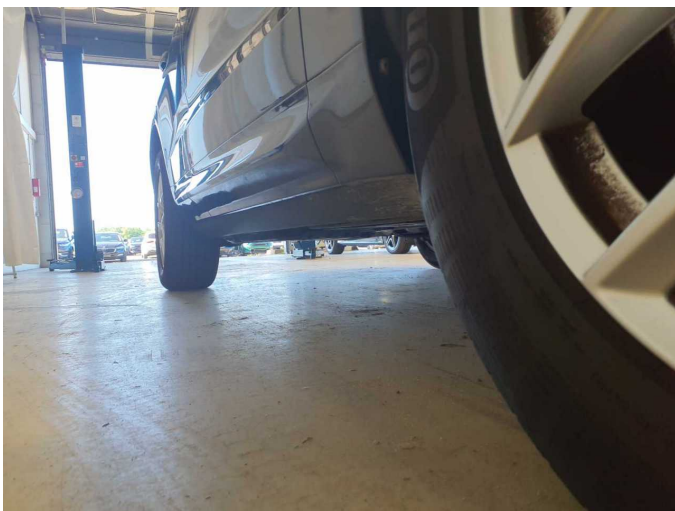


Figure 23: Misc.



Figure 24: Misc.



Figure 25: Misc.



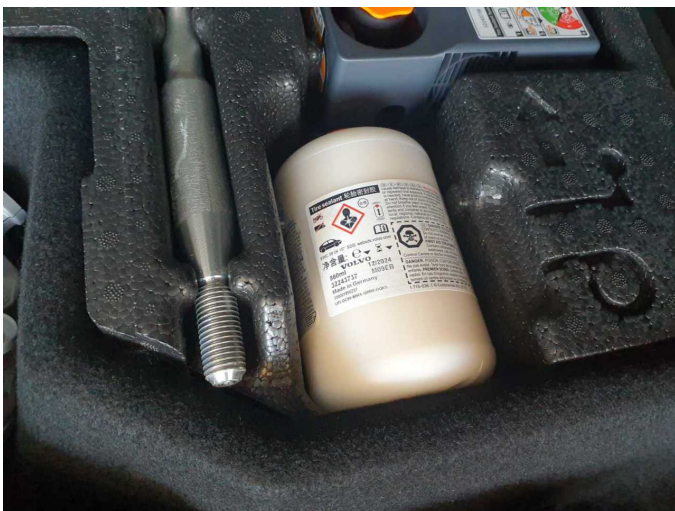
Figure 26: Misc.



Figure 27: Misc.



Damage 1: Screen cleaning: Wiper arm - rear (Kappe) - Missing - Replace



Damage 2: Equipment: Tirefit filler - Expired - Replace



Damage 3: Front bumper: Air-inlet grille - Loose - Repair



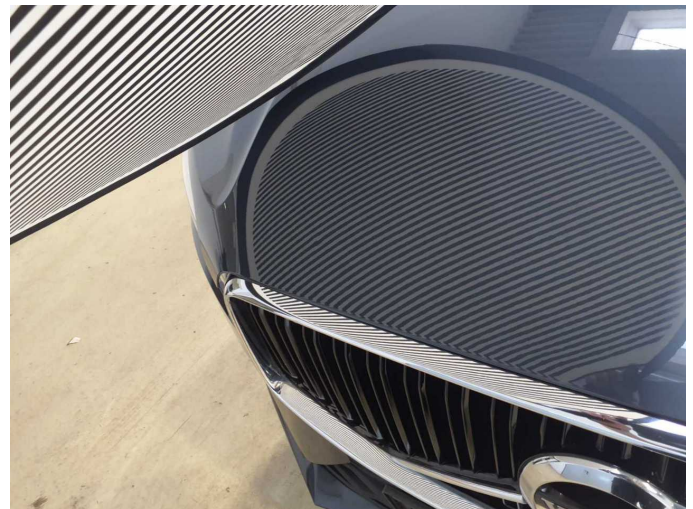
Damage 3: Front bumper: Air-inlet grille - Loose - Repair



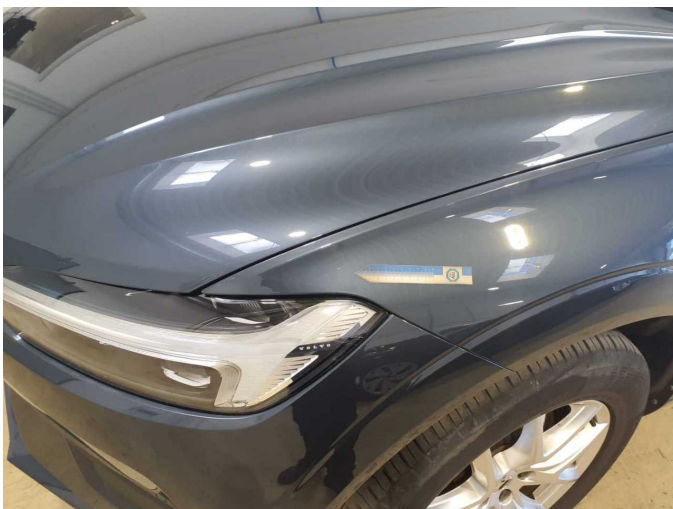
Damage 4: Bonnet: Bonnet - dent(s) - Smooth repair work



Damage 4: Bonnet: Bonnet - dent(s) - Smooth repair work



Damage 4: Bonnet: Bonnet - dent(s) - Smooth repair work



Damage 5: Mudguard - left side: Mudguard - left side - Scratch(es) - Smart repair



Damage 5: Mudguard - left side: Mudguard - left side - Scratch(es) - Smart repair



Damage 6: Side panel - rear left side: Side panel - Scratch(es) - Paint



Damage 6: Side panel - rear left side: Side panel - Scratch(es) - Paint



Damage 6: Side panel - rear left side: Side panel - Scratch(es) - Paint



Damage 7: Roof: Roof hatch / sliding roof - seal - Broken / torn - Replace



Damage 7: Roof: Roof hatch / sliding roof - seal - Broken / torn - Replace



Damage 8: Door - rear right side: Door (Anätzung) - Paint defect - Repair and paint



Damage 8: Door - rear right side: Door (Anätzung) - Paint defect - Repair and paint



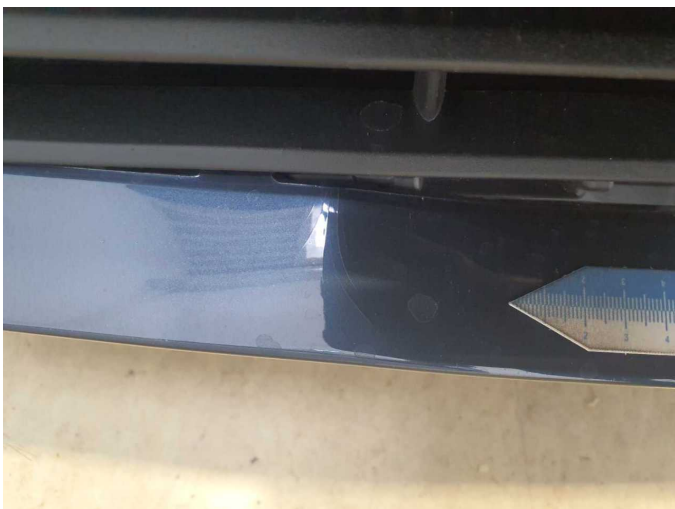
Damage 8: Door - rear right side: Door (Anätzung) - Paint defect - Repair and paint



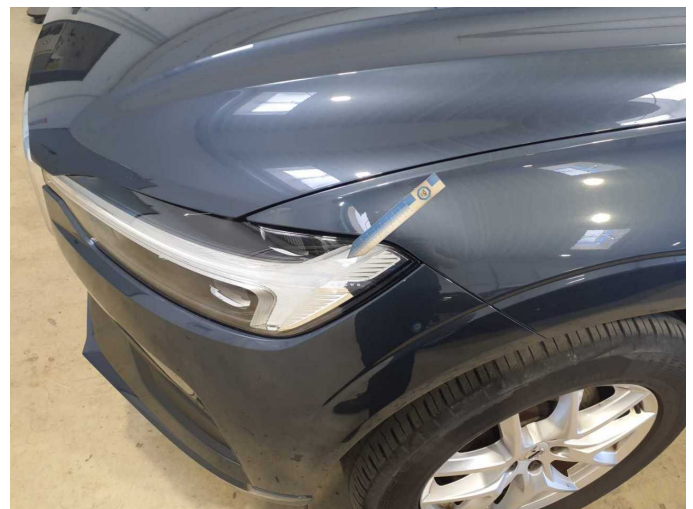
Damage 9: Front bumper: Front bumper - Deformed - Replace



Damage 9: Front bumper: Front bumper - Deformed - Replace



Damage 9: Front bumper: Front bumper - Deformed - Replace



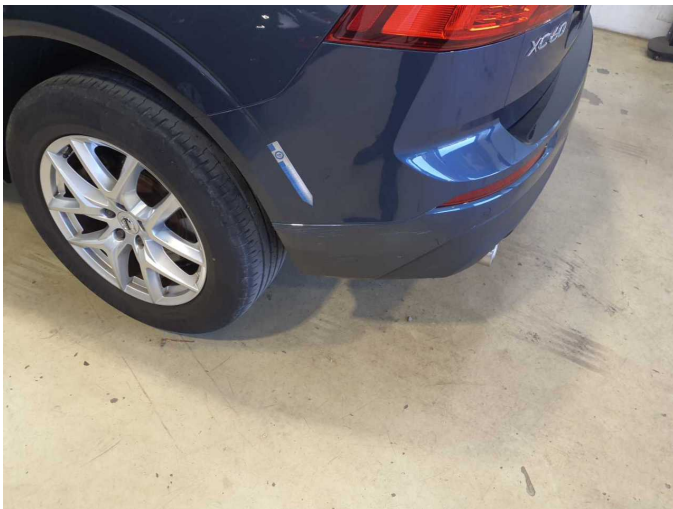
Damage 10: Headlight: Headlight - left side - Scratch(es) - Replace



Damage 10: Headlight: Headlight - left side - Scratch(es) - Replace



Damage 10: Headlight: Headlight - left side - Scratch(es) - Replace



Damage 11: Rear bumper: Rear bumper (Inklusive anbauteile) - Deformed - Replace



Damage 11: Rear bumper: Rear bumper (Inklusive anbauteile) - Deformed - Replace



Damage 11: Rear bumper: Rear bumper (Inklusive anbauteile) - Deformed - Replace



Damage 11: Rear bumper: Rear bumper (Inklusive anbauteile) - Deformed - Replace



Wear and tear 3: Vehicle glazing: Windscreen - Stone chips - No deduction



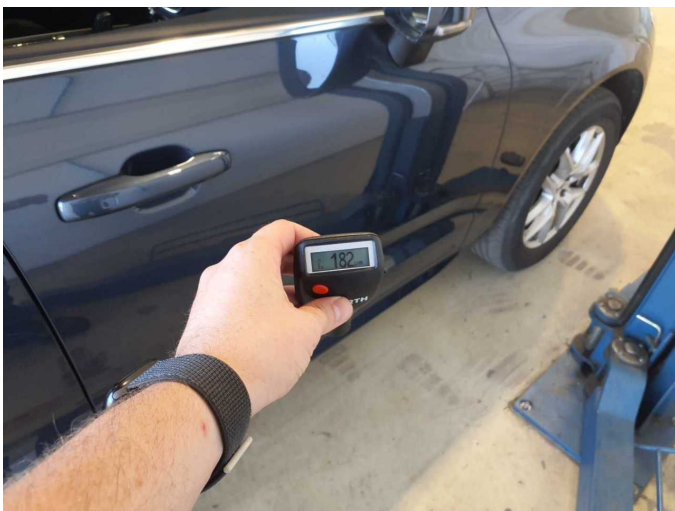
Wear and tear 3: Vehicle glazing: Windscreen - Stone chips - No deduction



Repainting 1: Side panel - rear right side



Repainting 1: Side panel - rear right side



Repainting 2: Door - front right side



Repainting 2: Door - front right side