

Expertise

Protocol number: 46307265
Order No. / Reference: 26472638
Inspection date: 23 Jun 2026

Manufacturer: Volvo

Model: XC60 T6 AWD Recharge Geartronic Inscription Expression

VIN: LYVUZBFVDMB779606



Vehicle details

Manufacturer / Type / Model / Equipment

Volvo XC60 T6 AWD Recharge Geartronic Inscription Expression

Vehicle Identification number LYVUZBFVDMB779606

Mileage (Read) 69,236 km

First registration 25 Mar 2021

Number of holders 1

Next periodical technical inspection 05/2026

(Report not on hand)

Power / Engine displacement 186 kw / 1,969 ccm

Fuel type / Cylinder Hybr.B/E ext.auf1 / 4

Gearbox / Number of gears Automatic / 8

Type of drive All-wheel drive

Type of vehicle SUV

Colour / colour code Crystal Weiß-Perleffekt

Doors / Seats 5 / 5

Upholstery type Leather

Colour of upholstery Anthracite-Black



Vehicle details			
Maintenance booklet / proof	digital proof / complete	Next maintenance in	6 Tag(e)
Last service on / at	07/2025 at 57,727 km		
Key is / should be	2 / 2	FZG documents	ZB#2 (B) was available (copy), ZB#1 (S) was not available.
		Letter No.	GA546603
Previous damage / Accident	Detectable	Repainting	Detectable
Inspection conditions	sufficient	Lifting equipment / pit	yes
Test drive	Not performed	Engine function test	Performed
Manufacturer key number/ type code number	9101 / BRS 00006		
Emission standard	EURO6;WLTP;AP;PI/CI; M, N1 I	fine dust sticker	
Permitted total weight	2,660 kg	Empty weight	

Tyres

Mounted tyres				
#	Tyre size	Type of tyre	Manufacturer	Tread depth
1)	235/55 R18 100V	Summer tyres on Light alloy	Goodyear	4mm / 4mm
2)	235/55 R18 100V	Summer tyres on Light alloy	Goodyear	4mm / 4mm
Additional tyres				
#	Tyre size	Type of tyre	Manufacturer	Tread depth
1)	235/60 R18 107H	Winter tyres on Light alloy	Pirelli	5mm / 5mm
2)	235/60 R18 107H	Winter tyres on Light alloy	Pirelli	6mm / 6mm
Replacement				
Typ	Tyre size	Type of tyre	Manufacturer	Tread depth
	Tirefit	Expiration date 06/2029		

Legend: Tread depth information for the left tire is listed first, for the right tire it is listed second on the axle in the direction of travel.



Equipment

Standard equipment

- 12-volt socket in the luggage compartment
- ABS - Anti-lock Braking System
- Driver and passenger side airbags with two-stage deployment system
- Airbag, side airbags for driver and front passenger and head/shoulder airbags (iC) for all occupants
- Electrically folding exterior mirrors
- Outdoor temperature display
- Hill Start Assist (HSA)
- LED turn signals integrated into the exterior mirrors
- third brake light
- Chrome applications in the front bumper
- CleanZone air quality system with activated carbon filter
- Roof edge spoiler
- Digital Instrumentation 2nd Gen.
- Rear parking assist with automatic braking intervention (rear)
- Electronic differential lock
- Chrome window surround
- Front grille in waterfall design in chrome
- Transmission: 8-speed Geartronic automatic transmission
- Automatic tailgate
- Interior and exterior mirrors automatically dimming
- Intelligent driver information system
- Keyless Drive
- Automatic climate control with separate temperature control for driver and front passenger
- Charging box under the cargo floor
- Stainless steel loading sill protector in the luggage compartment
- Steering wheel adjustable for height and reach
- Illuminated makeup mirror for driver and front passenger
- Front center armrest with integrated storage compartment and cup holders
- Radio: High Performance Sound audio system
- Radio accessories: Subwoofer
- Rain sensor
- Tire pressure monitoring system
- Wheels: Tire sealant
- Safety Assistance
- Whiplash Protection System (WHIPS)
- Safety braking system with disc brakes all around (internally ventilated)
- Seats: Lumbar support (2-way electrically adjustable) for driver and front passenger seats
- First aid kit and warning triangle
- Lashing eyes in the luggage compartment (foldable)
- Preparation for Trailer Stability Assist (TSA)
- Central locking system with two remote controls and integrated emergency keys
- 12-volt connection at the front
- Acoustic Vehicle Alerting System (AVAS)
- Passenger side airbag can be deactivated
- Airbag, driver's knee airbag
- All-wheel drive (AWD)
- Android infotainment system
- Electrically adjustable and heated exterior mirrors
- Hill Descent Control (HDC)
- Fog sensor for automatic activation of the defroster function
- On-board computer
- Chrome applications on the rear of the vehicle
- Chrome trim strip in the door sill area with Recharge lettering
- Aluminum roof rails (integrated)
- Drive Mode
- Aluminum door sill plates with Recharge lettering, front
- Electronic Stability Control (ESC)
- Electric windows front and rear
- Automatic emergency braking
- Luggage compartment partition net
- Google Services with navigation function
- Heated rear window
- Interior lighting
- ISOFIX mounting for the outer rear seats
- Child safety lock (rear doors)
- Headrests (5) front and rear
- Rear headrests foldable
- charging cable
- Cargo area roller blind
- LED headlights "Thor's Hammer" with high beam assist and integrated LED daytime running lights
- Rear center armrest (foldable)
- Panoramic glass sunroof with lifting function (electric)
- Electric parking brake
- Radio accessories: Digital radio reception (DAB+)
- Radio accessories: Two USB-C ports on the back of the center console
- Run-off Road Protection
- Rear seats in a 40/60 split or completely foldable with pass-through function
- Speed-sensitive power steering
- Seat belts
- Seats: Driver and front passenger seats are height-adjustable (electrically)
- Start/Stop technology
- Glazing: Colored glazing
- Volvo On Call
- Immobiliser



Extra equipment

- Towbar (semi-electric)
- Head-up display: Graphic projection of driving information onto the windshield
- Charging cable: Storage bag 990
- Package: IntelliSafe Package Pro P0005
- Package: Winter Package (front seat heating - steering wheel heating)
- Parking camera with 360° surround view 139
- Wheels: LM 19"-5-twin-spoke design 224
- Protection package
- Telephone: Inductive smartphone charging system. 918
- Enhanced air quality system with fine dust filtration according to air quality standard PM2.5
- Paint finish: Crystal White Pearl Effect
- Installation costs for running boards
- Package: Parking Assistance Package (front and rear parking aid - reversing camera)
- Park Assist Pilot 870
- Upholstery: Leather/leatherette comfort seats (including rear center armrest)
- Seats: Heated rear seats (outer seats of the 2nd row)
- Running boards

Brief expert findings

Documents submitted	At the time of the inspection, the vehicle registration certificate Part 2 (title) was available, but the vehicle registration certificate Part 1 (document) was not. (Copy)
VIN comparison	The vehicle identification number (VIN) was read from the vehicle and its conformity with the submitted documents was confirmed by the undersigned during the inspection.
Inspection	The inspection conditions were sufficient for the assessment of the vehicle. Lifting equipment and/or a pit were available for examining the vehicle.
Test drive	No test drive/shunting maneuver was carried out during the inspection of the vehicle.
Engine function test	An engine test run was performed.

Value reducing factors

No.	Component group	Description
1	Front bumper	Front bumper - Scratch(es) - Smart repair
2	Rear bumper	Rear bumper - Scratch(es) - Smart repair
3	Wheel / tyres	Wheelset - complete (19 Zoll Radsatz fehlt) - Differs from the original configuration - repair according to calculation

Wear and tear

No.	Component group	Description
1	Door - front right side	Door - Scratch(es) - No deduction
2	Vehicle glazing	Windscreen - Stone chips - No deduction
3	Wheel / tyres	Alloy rim - rear right side (Materiaabtrag) - Scratched - No deduction

The vehicle shows signs of wear and tear commensurate with its age and use.

Previous damages

No.	Previous damage	Extent of damage (Net)
1	Side - left, Provided by user / customer	1.696,79 €
2	Side right, Provided by user / customer, from 26 Mar 2024	2.608,77 €
3	Side - left, Provided by user / customer	



Repainting

No. Repainting

- 1 Mudguard - left side, Mudguard - right side, Side panel - rear left side, Door - rear left side, Door - front left side, Door - front right side, Professionally carried out, Invoice of repair done Non-existent

Paint coat thickness measurement

Mudguard - left side	188 µm	Mudguard - right side	225 µm
Side panel - rear left side	219 µm	Door - rear left side	306 µm
Door - front left side	167 µm	Door - front right side	242 µm

Order/Scope of Order

An order was placed to prepare a sales report for the described vehicle. This report includes the following:

- Description of key vehicle information
- Documentation of equipment features
(*Delivery by third-party service providers*)
- Documentation of damage, defects, missing parts
- Documentation of prior damage, unrepaired prior damage, repainting
- A brief visual or functional inspection of the equipment details, if possible.
(*Functional testing of driver assistance systems is not included in the scope of services!*)
- a photographic documentation of the vehicle

Basis for the order

This product is based on the guidelines for vehicle returns and valuations published by Alphabet Fleet GmbH. The expert makes the specific findings in each individual case objectively, within the framework of the prescribed standards, based on their own expertise.

The vehicle inspection takes place in a fully assembled, unassembled state.

Damage or defects that can only be detected during disassembly/diagnostic work or through further investigation remain within the realm of prognostic risk. An increased risk exists due to concealed defects caused by fraudulent misrepresentation and which were not identifiable by the expert.

Damage or defects resulting from normal use or wear and tear of the vehicle will be accepted in accordance with the applicable standard.

There was no explicit identification or monetary consideration of the expected features within the product.

Features which, in their nature and extent, slightly exceed normal use but do not constitute unacceptable damage, will be documented and indicated as signs of wear, if applicable.

Damage or defects that, according to the applicable standard, can no longer be attributed to normal use or wear and tear are listed under "Value Reducing Factors" in the product description.

Depending on the product specification, a monetary ID can be provided. If this takes place, the costs can be 100% d or pro rata depending on the vehicle's age and mileage.

Previous damages

According to available information previous damages were repaired at the vehicle. Traces of repairs, which allow conclusions about the area of repair, were not recognizable during the inspection.

Comments

Der montierte Radsatz ist nicht Bestandteil der Ausstattung.

Der beiliegende Radsatz gehört nicht zur Ausstattung.



Figure 1: Diagonal front (left)



Figure 2: Diagonal front (right)



Figure 3: Diagonal rear (left)



Figure 4: Diagonal rear (right)



Figure 5: Interior - front

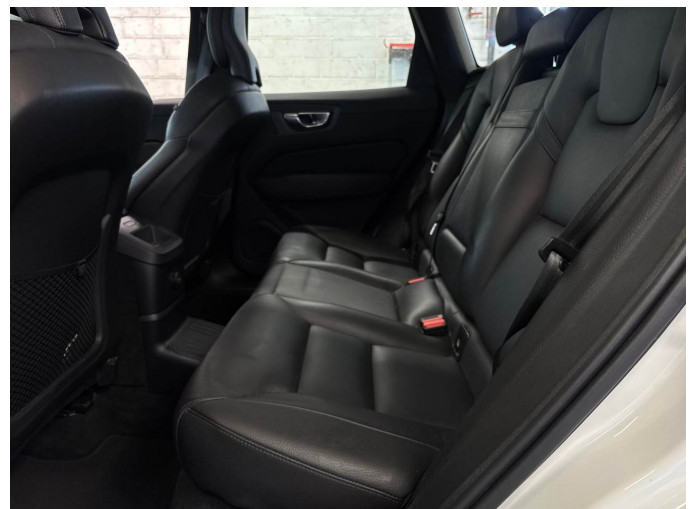


Figure 6: Interior - rear



Figure 7: Instrument cluster



Figure 8: Instrument panel



Figure 9: Interior 360° view



Figure 10: Cargo area

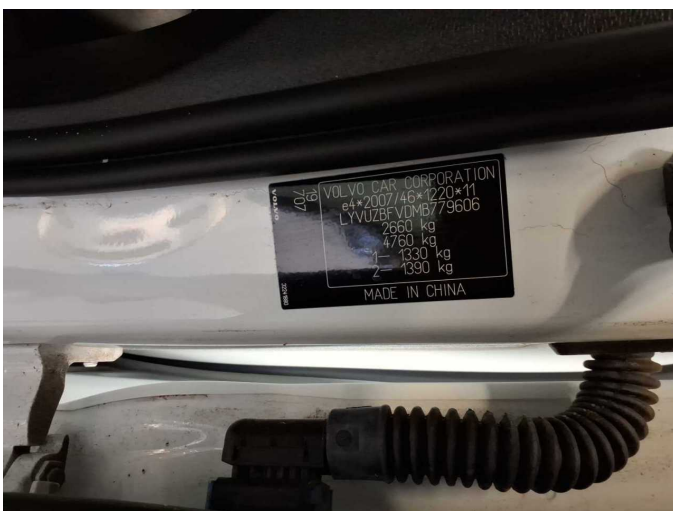


Figure 11: VIN



Figure 12: Mounted tyres



Figure 13: Documents

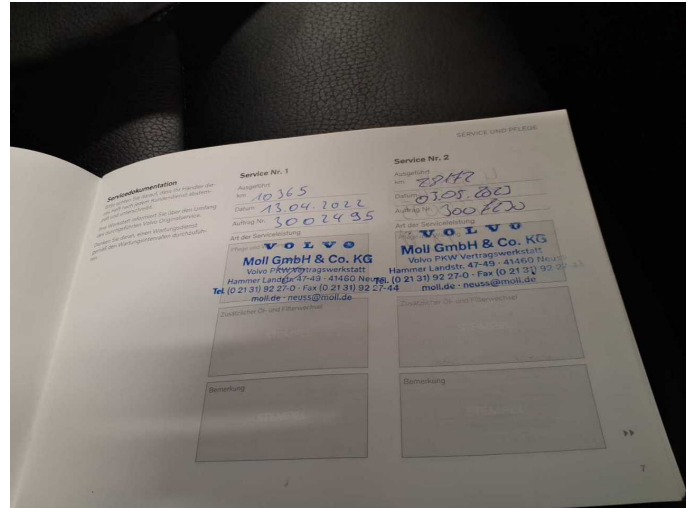


Figure 14: Documents

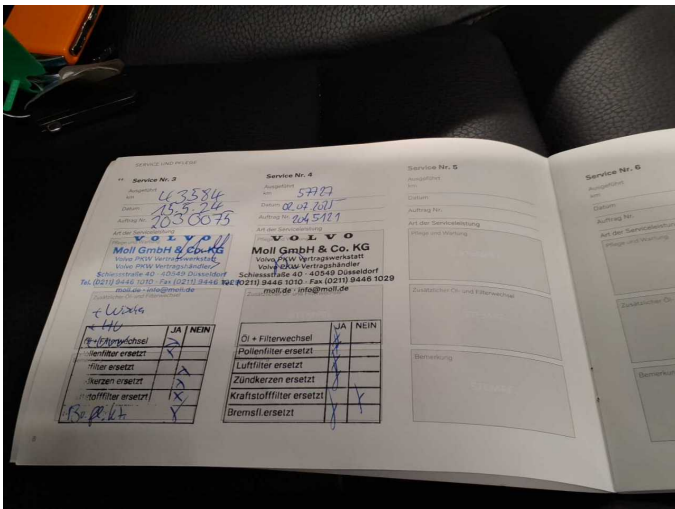


Figure 15: Documents



Figure 16: Additional tyres



Figure 17: Navigation



Figure 18: Misc.



Figure 19: Misc.



Figure 20: Misc.

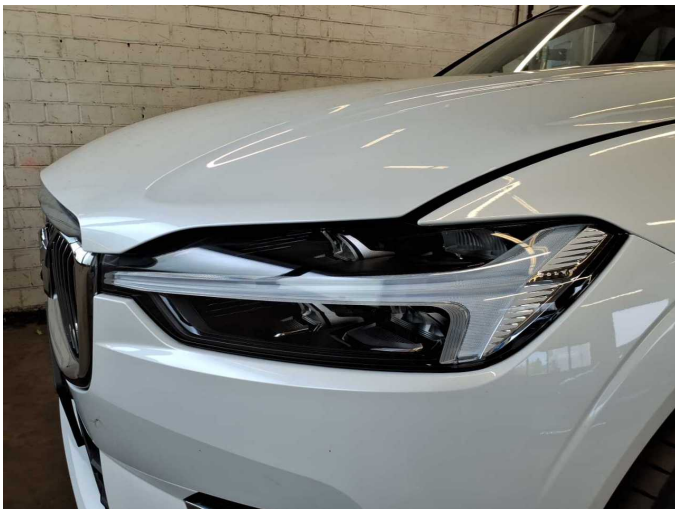


Figure 21: Misc.



Figure 22: Misc.



Figure 23: Misc.



Figure 24: Misc.



Figure 25: Misc.



Figure 26: Misc.



Figure 27: Misc.



Figure 28: Misc.



Figure 29: Misc.



Figure 30: Misc.



Figure 31: Misc.



Figure 32: Misc.



Figure 33: Misc.



Figure 34: Misc.



Figure 35: Misc.



Figure 36: Misc.



Figure 37: Misc.



Figure 38: Misc.



Damage 1: Front bumper: Front bumper - Scratch(es) - Smart repair



Damage 1: Front bumper: Front bumper - Scratch(es) - Smart repair



Damage 2: Rear bumper: Rear bumper - Scratch(es) - Smart repair



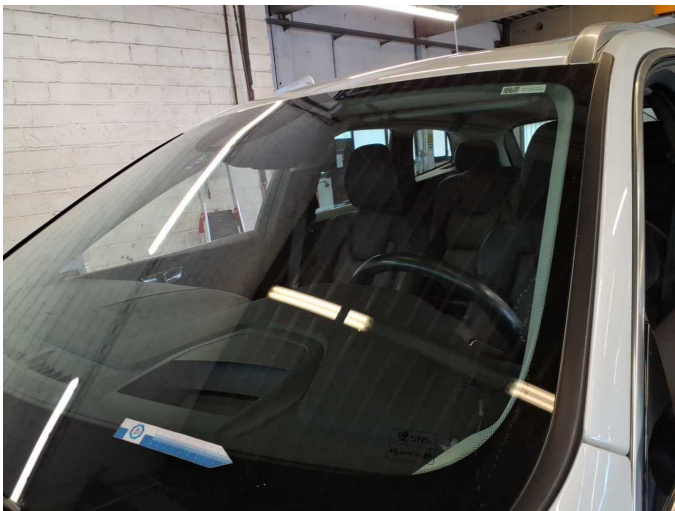
Damage 2: Rear bumper: Rear bumper - Scratch(es) - Smart repair



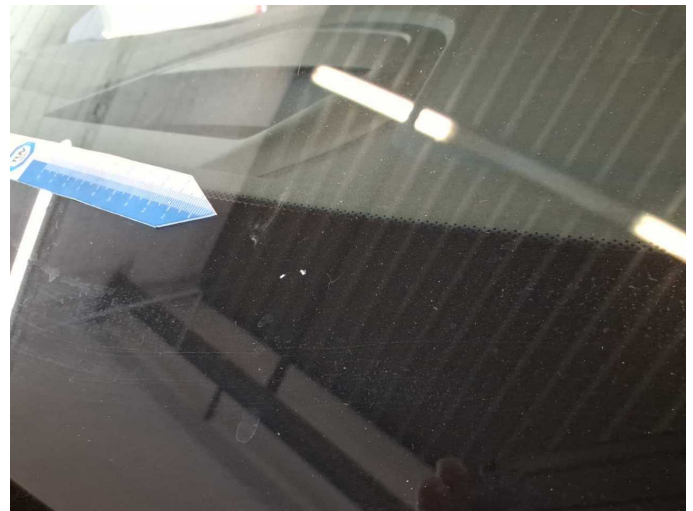
Wear and tear 1: Door - front right side: Door - Scratch(es) - No deduction



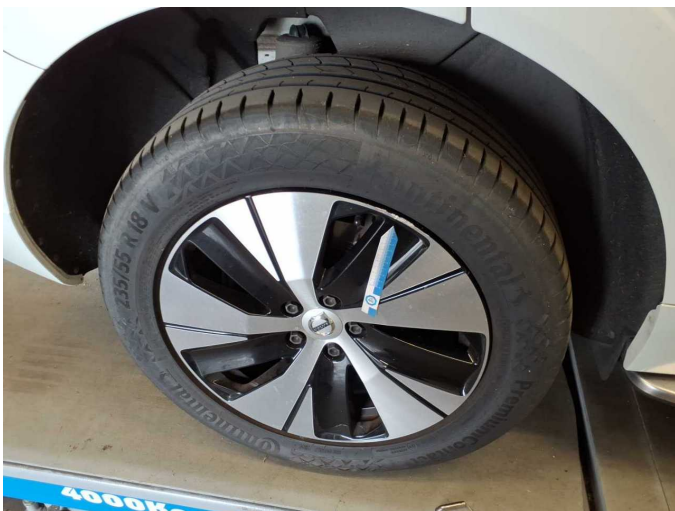
Wear and tear 1: Door - front right side: Door - Scratch(es) - No deduction



Wear and tear 2: Vehicle glazing: Windscreen - Stone chips - No deduction



Wear and tear 2: Vehicle glazing: Windscreen - Stone chips - No deduction



Wear and tear 3: Wheel / tyres: Alloy rim - rear right side (Materiaabtrag) - Scratched - No deduction



Wear and tear 3: Wheel / tyres: Alloy rim - rear right side (Materiaabtrag) - Scratched - No deduction



Wear and tear 3: Wheel / tyres: Alloy rim - rear right side (Materiaabtrag)
 - Scratched - No deduction



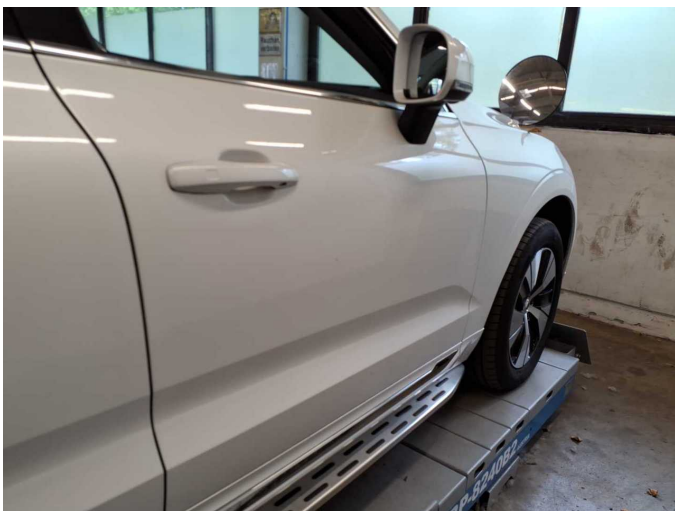
Repainting 1: Mudguard - left side, Mudguard - right side, Side panel - rear left side, Door - rear left side, Door - front left side, Door - front right side



Repainting 1: Mudguard - left side, Mudguard - right side, Side panel - rear left side, Door - rear left side, Door - front left side, Door - front right side



Repainting 1: Mudguard - left side, Mudguard - right side, Side panel - rear left side, Door - rear left side, Door - front left side, Door - front right side



Repainting 1: Mudguard - left side, Mudguard - right side, Side panel - rear left side, Door - rear left side, Door - front left side, Door - front right side



Repainting 1: Mudguard - left side, Mudguard - right side, Side panel - rear left side, Door - rear left side, Door - front left side, Door - front right side



Repainting 1: Mudguard - left side, Mudguard - right side, Side panel - rear left side, Door - rear left side, Door - front left side, Door - front right side



Repainting 1: Mudguard - left side, Mudguard - right side, Side panel - rear left side, Door - rear left side, Door - front left side, Door - front right side



Repainting 1: Mudguard - left side, Mudguard - right side, Side panel - rear left side, Door - rear left side, Door - front left side, Door - front right side



Repainting 1: Mudguard - left side, Mudguard - right side, Side panel - rear left side, Door - rear left side, Door - front left side, Door - front right side



Repainting 1: Mudguard - left side, Mudguard - right side, Side panel - rear left side, Door - rear left side, Door - front left side, Door - front right side



Repainting 1: Mudguard - left side, Mudguard - right side, Side panel - rear left side, Door - rear left side, Door - front left side, Door - front right side



Repainting 1: Mudguard - left side, Mudguard - right side, Side panel - rear left side, Door - rear left side, Door - front left side, Door - front right side



Wartungshistorie

(gemäß Auftraggeber Informationen)

Fahrgestellnummer: LYVUZBFVDMB779606
Hersteller / Modell: VOLVO VOLVO XC60 T6 AWD Recharge Geartronic Inscription
Expression

Datum	KM-Stand	Beschreibung
02.07.2025	57.727	Bremsflüssigkeit; Bremsflüssigkeit ern; Luftfiltereinsatz ern; Motoröl b. Wartung; Ölfilter ern; Regelwartungsdienst; Reparatur Sonstiges; Wartung Sonstiges; Zündkerzen ern
24.03.2025	43.795	Batterie ern; Systemtest/Eigendiagnose
15.05.2024	43.582	AU; Motoröl b. Wartung; Ölfilter ern; Regelwartungsdienst; Reparatur Sonstiges; Wartung Sonstiges
03.05.2023	28.127	Bremsflüssigkeit ern; Motoröl b. Wartung; Ölfilter ern; Regelwartungsdienst; Reparatur Sonstiges; Wartung Sonstiges
13.04.2022	10.365	Motoröl b. Wartung; Ölfilter ern; Regelwartungsdienst; Wartung Sonstiges