

Expertise

Protocol number: 46294389
Order No. / Reference: 26460481
Inspection date: 1 Jul 2026

Manufacturer: Volkswagen

Model: Tiguan Allspace 2.0 TDI SCR DSG Life

VIN: WVGZZZ5N2PM038785



Vehicle details

Manufacturer / Type / Model / Equipment

Volkswagen Tiguan Allspace 2.0 TDI SCR DSG Life

Vehicle Identification number WVGZZZ5N2PM038785

Mileage (Read) 112,993 km

First registration 16 Mar 2023

Number of holders 1

Power / Engine displacement 110 kw / 1,968 ccm

Fuel type / Cylinder Diesel / 4

Gearbox / Number of gears Automatic / 7

Type of drive Front drive

Type of vehicle SUV

Colour / colour code Platinumgrey Metallic
(D7X)

Doors / Seats 5 / 5

Upholstery type Leather

Colour of upholstery Black



Vehicle details

Maintenance booklet / proof	digital proof / complete	Next maintenance in	6,200 km
Last service on / at	09/2025 at 87,566 km		
Key is / should be	2 / 2	FZG documents	ZB#2 (B) was available (copy), ZB#1 (S) was not available.
		Letter No.	GP881092
Previous damage / Accident	None detectable	Repainting	Detectable
Inspection conditions	sufficient	Lifting equipment / pit	yes
Test drive	Not performed	Engine function test	Performed
Manufacturer key number / type code number	0603 / BZG 23525		
Emission standard	EURO6;WLTP;AP;PI/CI; M, N1 I	fine dust sticker	
Permitted total weight	2,270 kg	Empty weight	

Tyres

Mounted tyres

#	Tyre size	Type of tyre	Manufacturer	Tread depth
1)	215/65 R17 99H	Winter tyres on Light alloy	Pirelli	4mm / 4mm
2)	215/65 R17 99H	Winter tyres on Light alloy	Pirelli	5mm / 5mm

Additional tyres

#	Tyre size	Type of tyre	Manufacturer	Tread depth
1)	235/55 R18 100V	Summer tyres on Light alloy	Continental	4mm / 4mm
2)	235/55 R18 100V	Summer tyres on Light alloy	Continental	5mm / 5mm

Legend: Tread depth information for the left tire is listed first, for the right tire it is listed second on the axle in the direction of travel.



Equipment

Standard equipment

- Storage compartments in the overhead console
- Airbag, head airbag system including front side airbags
- Adaptive Cruise Control (ACC) "stop & go" with speed limiter
- third brake light
- Chrome trim on the side windows
- Silver anodized roof rails
- Diesel particulate filter
- Parking assistance
- Electronic parking brake including auto-hold function
- Automatic headlight control, with daytime running lights
- High beam control Light Assist
- Pedestrian detection
- Luggage compartment lighting
- Transmission: 7-speed DSG
- Rear window heated
- Rear window wiper with intermittent function
- ISOFIX mounting points, also for i-Size child car seats
- Air conditioning system "Air Care Climatronic"
- Front headrests
- Steering wheel: Multifunction steering wheel in leather, with paddle shifters
- Illuminated makeup mirrors in the sun visors
- Fatigue detection
- Emergency braking assistant "Front Assist"
- Upholstery: Cloth
- Radio
- Radio accessories: 8 speakers
- Rain sensor
- Wheels: AirStop tires 235/55 R 18, optimized for low rolling resistance
- Gearshift knob in leather
- electromechanical power steering
- Seats: Front passenger seat backrest folds down completely
- Seats: Lumbar support in the front
- Lane keeping assistant "Lane Assist"
- 12-volt socket
- Bumpers in body color
- Textile floor mats front and rear
- Prepared for later activation: Navigation function "Discover Media" incl. "Streaming & Internet"
- Central locking without safe locking, with remote control and 2 remote keys
- Airbag for driver and front passenger including knee airbag on the driver's side
- Electrically adjustable and heated exterior mirrors
- Exterior mirror housings painted silver
- Chrome applications on mirror adjustment switches, window regulator switches, door pull handles
- Decorative inlays "Horizon Black"
- Display: Digital Cockpit Pro, multicolor, various selectable info profiles
- Electronic Stability Program with counter-steering support
- Electric windows front and rear
- Windscreen made of laminated safety glass, heat and sound insulating
- Luggage compartment floor height adjustable in 2 stages
- Tailgate with electric opening and closing, adjustable opening angle
- Interior mirror automatically dimming
- LED license plate lighting
- Rear headrests (3)
- LED headlights
- Reading lights: 2 front and 2 rear
- Light in the front footwell
- front center armrest
- Non-smoking version
- Emergency call service
- Proactive occupant protection system in conjunction with "Front Assist"
- Radio accessories: Digital radio reception DAB+
- Tire pressure monitoring system
- Wheels: Tire Mobility Set omitted
- Wheels: Light alloy (4) "Frankfurt" 7 J x 18
- Drawers under the front seats
- Seat belts: Three-point automatic seat belts at the front with height adjustment and belt tensioner
- Seats: Comfort seats in the front
- Seats: Front seats with height adjustment
- Start-stop system with brake energy recuperation
- Power outlet: 2 USB-C ports on the front
- Telephone interface
- First aid kit, warning triangle and high-visibility vest
- Electronic immobilizer
- Green thermal insulation glazing, sides and rear



Extra equipment

- Foldable towbar (electric release)
- Wirelessly heated windshield (infrared-reflective)
- Paint finish: Metallic
- LED matrix headlights - IQ.LIGHT (Dynamic Light Assist high beam control for LED matrix headlights - Dynamic headlight range control with dynamic cornering lights - LED taillights, dark red - Bad weather light and cornering light - IQ.LIGHT - LED matrix headlights with LED daytime running lights, cornering lights and dynamic turn signals)
- Mesh partition
- Package: Business Premium incl. Navigation (DSG) (2 USB-C ports in the front, 1 USB-C charging port on the rear center console - Head-up display - Leather multifunction steering wheel, heated, with shift paddles - Automatically heated windshield washer nozzles in the front - Voice control - "Comfort" telephone interface with inductive charging function - Heated front seats)
- Park Assist system including parking aid
- Wheels: Light alloy (4) "Kingston" 7 J x 18 (AirStop tires 235/55 R 18, optimized for rolling resistance - wheel locks with enhanced theft protection)
- Auxiliary heating and ventilation (with radio remote control and timer)
- Anti-theft alarm system with safe locking (anti-theft alarm system with interior monitoring, backup horn and tow-away protection, central locking with safe locking, remote control and 2 remote folding keys)
- Navigation system "Discover Pro" incl. "Streaming & Internet" (8 speakers - App-Connect incl. App-Connect Wireless for Apple CarPlay and Android Auto - Digital radio reception DAB+ - Navigation system "Discover Pro" incl. "Streaming & Internet" - Radio - Voice control - Traffic sign recognition)
- Package: Leather package "Vienna" including front seats with memory function (electrically adjustable, folding, heated exterior mirrors with memory function and ambient lighting - electrically adjustable lumbar support in the front - perforated "Vienna" leather center panels of the front seats and outer rear seats - top comfort seats in the front - electrically adjustable front seats with memory function; with comfort entry on the driver's side - front seats with active climate control)
- Windows: Rear side windows and rear window tinted
- Keyless locking and starting system "Keyless Access" with safe locking mechanism
- Surround view "Area View" (incl. reversing camera "Rear View")

Brief expert findings

Documents submitted	At the time of the inspection, the vehicle registration certificate Part 2 (title) was available, but the vehicle registration certificate Part 1 (document) was not. (Copy)
VIN comparison	The vehicle identification number (VIN) was read from the vehicle and its conformity with the submitted documents was confirmed by the undersigned during the inspection.
Inspection	The inspection conditions were sufficient for the assessment of the vehicle. Lifting equipment and/or a pit were available for examining the vehicle.
Test drive	No test drive/shunting maneuver was carried out during the inspection of the vehicle.
Engine function test	An engine test run was performed.

Value reducing factors

No.	Component group	Description
1	Equipment	Vehicle key (Batterie) - Empty - Replace
2	Bonnet	Bonnet - dent(s) - Smooth repair work
3	Door - front left side	Door edge - Scratch(es) - Smart repair

Wear and tear

No.	Component group	Description
1	Misc.	Main inspection - No evidence - No deduction
2	Rear bumper	Rear bumper - Scratch(es) - No deduction

The vehicle shows signs of wear and tear commensurate with its age and use.

Repainting

No.	Repainting
1	Side panel - rear left side, Professionally carried out, Invoice of repair done Non-existent



Paint coat thickness measurement

Side panel - rear left side 140 µm |

Order/Scope of Order

An order was placed to prepare a sales report for the described vehicle. This report includes the following:

- Description of key vehicle information
- Documentation of equipment features
(Delivery by third-party service providers)
- Documentation of damage, defects, missing parts
- Documentation of prior damage, unrepaired prior damage, repainting
- A brief visual or functional inspection of the equipment details, if possible.
(Functional testing of driver assistance systems is not included in the scope of services!)
- a photographic documentation of the vehicle

Basis for the order

This product is based on the guidelines for vehicle returns and valuations published by Alphabet Fleet GmbH. The expert makes the specific findings in each individual case objectively, within the framework of the prescribed standards, based on their own expertise.

The vehicle inspection takes place in a fully assembled, unassembled state.

Damage or defects that can only be detected during disassembly/diagnostic work or through further investigation remain within the realm of prognostic risk. An increased risk exists due to concealed defects caused by fraudulent misrepresentation and which were not identifiable by the expert.

Damage or defects resulting from normal use or wear and tear of the vehicle will be accepted in accordance with the applicable standard.

There was no explicit identification or monetary consideration of the expected features within the product.

Features which, in their nature and extent, slightly exceed normal use but do not constitute unacceptable damage, will be documented and indicated as signs of wear, if applicable.

Damage or defects that, according to the applicable standard, can no longer be attributed to normal use or wear and tear are listed under "Value Reducing Factors" in the product description.

Depending on the product specification, a monetary ID can be provided. If this takes place, the costs can be 100% d or pro rata depending on the vehicle's age and mileage.

Previous damages

No apparent prior damage that had been repaired could be found on the vehicle.

Comments

Der montierte Winterradsatz ist nicht Bestandteil der Ausstattung.



Figure 1: Diagonal front (left)



Figure 2: Diagonal front (right)



Figure 3: Diagonal rear (left)



Figure 4: Diagonal rear (right)



Figure 5: Interior - front



Figure 6: Interior - rear



Figure 7: Instrument cluster



Figure 8: Instrument panel



Figure 9: Interior 360° view



Figure 10: Cargo area



Figure 11: VIN



Figure 12: Mounted tyres



Figure 13: Documents



Figure 14: Additional tyres



Figure 15: Navigation



Figure 16: Misc.

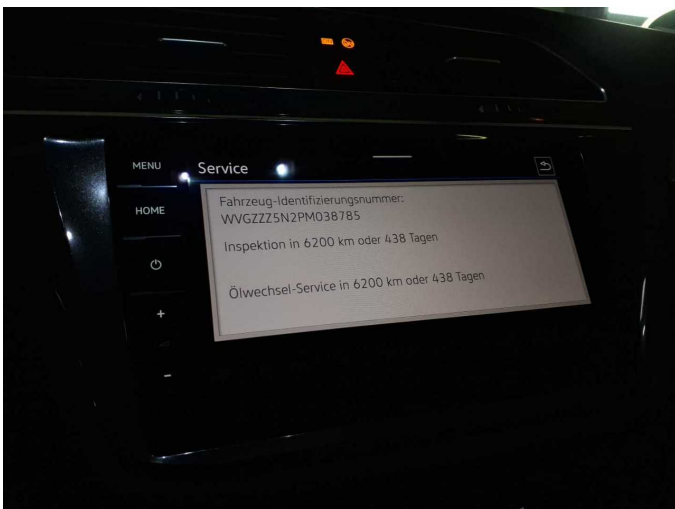


Figure 17: Misc.



Figure 18: Misc.



Figure 19: Misc.



Figure 20: Misc.

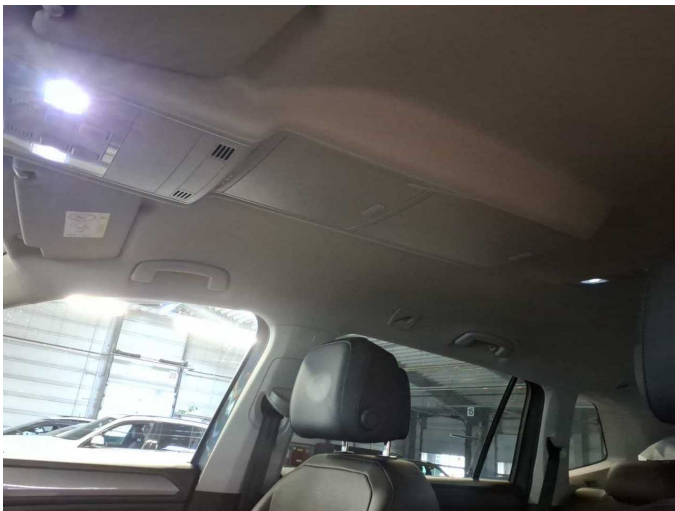


Figure 21: Misc.



Figure 22: Misc.

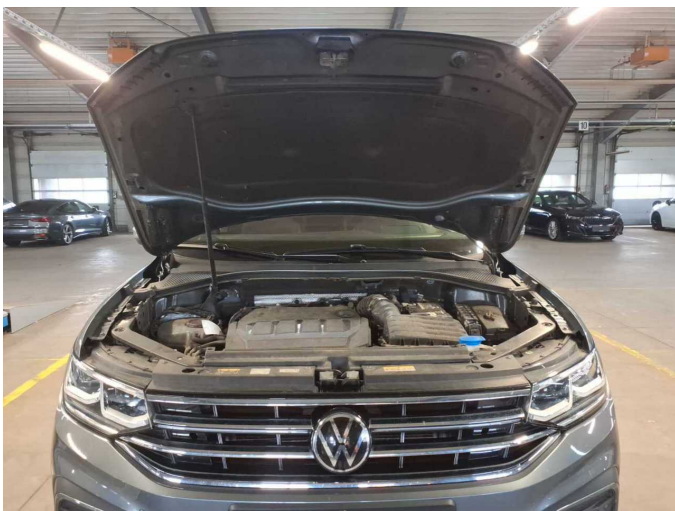


Figure 23: Misc.



Figure 24: Misc.



Figure 25: Misc.



Figure 26: Misc.



Figure 27: Misc.

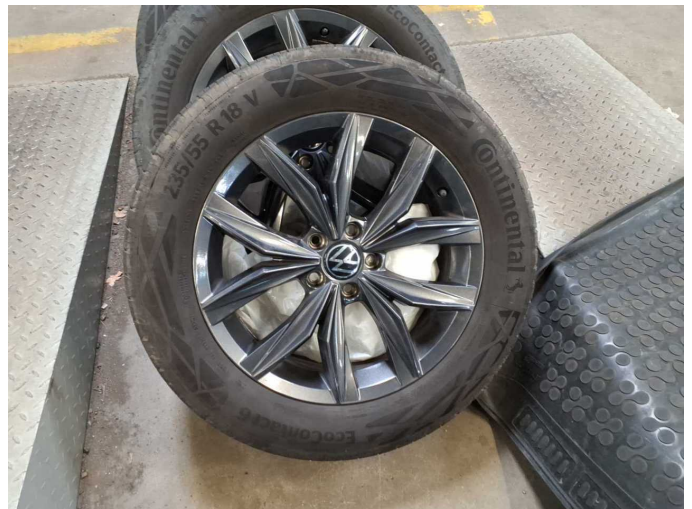
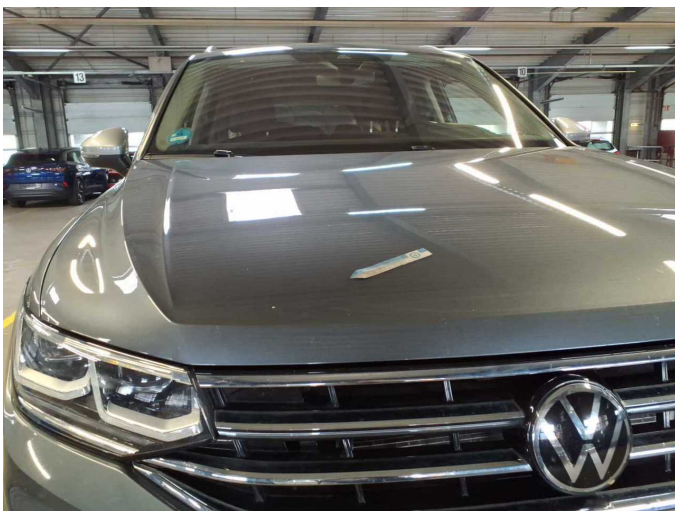
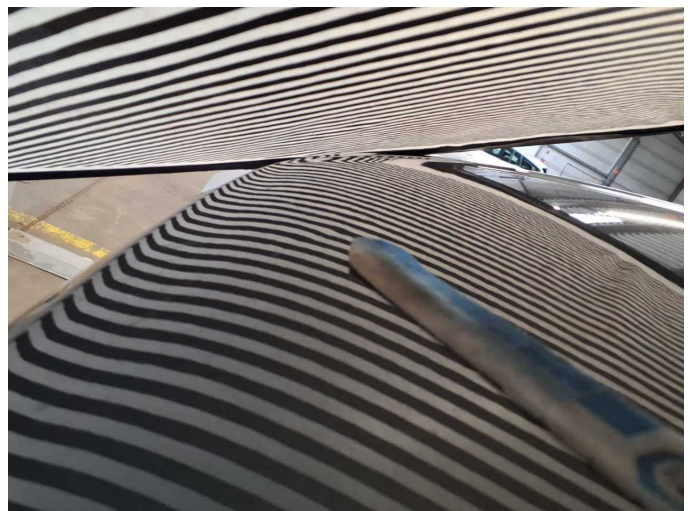


Figure 28: Misc.



Damage 2: Bonnet: Bonnet - dent(s) - Smooth repair work



Damage 2: Bonnet: Bonnet - dent(s) - Smooth repair work



Damage 3: Door - front left side: Door edge - Scratch(es) - Smart repair

Damage 3: Door - front left side: Door edge - Scratch(es) - Smart repair



Repainting 1: Side panel - rear left side



Wartungshistorie

(gemäß Auftraggeber Informationen)

Fahrgestellnummer: WVGZZZ5N2PM038785

Hersteller / Modell: VOLKSWAGEN VW Tiguan Allspace 2.0 TDI SCR DSG Life

Datum	KM-Stand	Beschreibung
11.02.2026	103.729	HU + AU
10.02.2026	103.729	Klimaanlage inst.; Reparatur Sonstiges; Systemtest/Eigendiagnose
30.09.2025	87.566	Bremse Sonstiges; Bremsflüssigkeit; Bremsflüssigkeit ern; Bremsklötze vorne; Bremsscheiben + Klötze v; Bremsscheiben vorne; Kraftstofffilter ern; Luftfiltereinsatz ern; Motoröl b. Wartung; Ölfilter ern; Regelwartungsdienst; Systemtest/Eigendiagnose; Wartung Sonstiges
10.12.2024	60.390	Bremse Sonstiges; Bremsklötze hinten; Motoröl b. Wartung; Ölfilter ern; Regelwartungsdienst; Wartung Sonstiges
06.12.2023	28.806	Motoröl b. Wartung; Regelwartungsdienst