

Expertise

Protocol number: 45522218
Order No. / Reference: 26138346
Inspection date: 11 May 2026

Manufacturer: Opel

Model: Insignia Sports Tourer 2.0 Diesel Aut. Business Elegance

VIN: W0VZT8EP4N1006524



Vehicle details

Manufacturer / Type / Model / Equipment

Opel Insignia Sports Tourer 2.0 Diesel Aut. Business Elegance

Vehicle Identification number W0VZT8EP4N1006524

Mileage (Read) 89,773 km

First registration 25 Apr 2022

Number of holders 1

Power / Engine displacement 128 kw / 1,995 ccm

Fuel type / Cylinder Diesel / 4

Gearbox / Number of gears Automatic / 8

Type of drive Front drive

Type of vehicle Station wagon

Colour / colour code Diamant Schwarz Metallic

Doors / Seats 5 / 5

Upholstery type Leather

Colour of upholstery Black

readiness to drive Roadworthy



Vehicle details

Maintenance booklet / proof	digital evidence / incomplete	Next maintenance in	0 %
Last service on / at	04/2025 at 70,262 km		
Key is / should be	2 / 2	FZG documents	ZB#2 (B) was available (copy), ZB#1 (S) was not available.
		Letter No.	GJ652897
Previous damage / Accident	None detectable	Repainting	None detectable
Inspection conditions	sufficient	Lifting equipment / pit	No
Test drive	Not performed	Engine function test	Performed
readiness to drive	Roadworthy		
Manufacturer key number/ type code number	1844 / AMC 00266		
Emission standard	EURO6;WLTP;AP;PI/CI; M, N1 I	fine dust sticker	
Permitted total weight	2,215 kg	Empty weight	

Tyres

Mounted tyres

#	Tyre size	Type of tyre	Manufacturer	Tread depth
1)	225/55 R17 101H	Winter tyres on Light alloy	Dunlop	5mm / 5mm
2)	225/55 R17 101H	Winter tyres on Light alloy	Dunlop	7mm / 7mm

Additional tyres

#	Tyre size	Type of tyre	Manufacturer	Tread depth
1)	225/55 R17 97W	Summer tyres on Light alloy	Bridgestone	3mm / 3mm
2)	225/55 R17 97W	Summer tyres on Light alloy	Bridgestone	5mm / 5mm

Replacement

Typ	Tyre size	Type of tyre	Manufacturer	Tread depth
Tirefit		Expiration date 08/2026		

Legend: Tread depth information for the left tire is listed first, for the right tire it is listed second on the axle in the direction of travel.



Equipment

Standard equipment

- Storage compartments
- Airbag: Front and rear outer head airbags
- Ambient lighting
- Electrically adjustable and heated exterior mirrors for driver and passenger side
- Roof rails, silver anodized
- Tachometer
- Electronic Stability Program (ESP Plus)
- Front collision warning system with pedestrian detection and automatic emergency braking
- Speed controller
- rear window wiper
- Automatic climate control, two zones
- Rear headrests (3 pieces)
- LED fog lights
- Steering column adjustable for height and reach
- Illuminated makeup mirrors in both sun visors
- Package: Charging (Sports Tourer)
- Package: Innovations 1
- Electric parking brake
- Upholstery: Monita fabric/Premium leather look
- Radio: Digital radio reception DAB+
- Radio accessories: 2 USB ports
- Tire repair kit
- Wheels: Alloy wheels 8.5 J x 18 (multi-spoke)
- Power steering
- Seat belts: Three-point seat belts in all seats
- Visibility equipment
- Lane Keeping Assist
- Start/Stop System
- Traction Control (TC) Plus
- Immobiliser
- Central locking with remote control

Extra equipment

- Swiveling trailer hitch (including trailer stability program)
- Package: Business Premium
- Upholstery: Siena leather interior, perforated, black (Ergonomic active seat (AGR), driver and front passenger - Leather upholstery (seat contact surfaces in leather; 2nd row center seat, headrests, door panels and outer seat bolsters in leatherette) - Multi-stage seat heating, driver and front passenger - Rear center armrest with cupholder and pass-through from the luggage compartment - Rear seat backrest with FlexFold function, 40:20:40 split-folding - Door sill trims with OPEL lettering, front)

- Airbag: Front airbags (multi-stage) and side airbags, driver and front passenger
- Anti-lock braking system (ABS)
- Hill Start Assist
- third brake light
- Diesel particulate filter
- Electronic brake force distribution (EBD)
- Electric windows front and rear
- Pedestrian protection including active hood
- luggage compartment cover
- Transmission: 8-speed automatic transmission
- Child safety lock in the rear doors, manual
- Front headrests
- LED headlights
- LED daytime running lights including LED indicators, front and LED taillights
- Center armrest, front
- Package: Easy-Access
- Park & Go with reversing camera, digital
- Parkpilot, front and rear parking aid
- Quickheat rapid heating system
- Radio: Multimedia Navi Pro with 8" color touchscreen display
- Tire pressure gauge
- Rear seat backrest with FlexFold function, foldable in a 40:20:40 ratio
- safety net
- Seats: Ergonomic active seat (AGR) for driver and front passenger
- Bumpers painted in body color
- Pre-installation for child seat mounting system "ISOFIX"
- Thermal insulation glazing, green tinted
- Second folding ignition key

- Paint finish: Metallic
- Package: Innovations 2 (Sports Tourer automatic transmission) (Head-up display, Adaptive cruise control (Generation 3), Stop & Go function, Forward collision alert with pedestrian detection and automatic emergency braking, active from 4 km/h, range 150 m. In case of collision risk, the braking system is prepared and, if necessary, emergency braking/automatic emergency braking is initiated. Lane keeping assist, keyless entry and start system, sensor-controlled electric tailgate, stainless steel loading sill protector)



Brief expert findings

Documents submitted	At the time of the inspection, the vehicle registration certificate Part 2 (title) was available, but the vehicle registration certificate Part 1 (document) was not. (Copy)
VIN comparison	The vehicle identification number (VIN) was read from the vehicle and its conformity with the submitted documents was confirmed by the undersigned during the inspection.
Inspection	The inspection conditions were sufficient for the assessment of the vehicle. No lifting equipment or pit was available for inspecting the vehicle. Therefore, inspection of the vehicle's underside was only possible to a limited extent.
Test drive	No test drive/shunting maneuver was carried out during the inspection of the vehicle.
Engine function test	An engine test run was performed.
readiness to drive	The vehicle was roadworthy at the time of inspection.

Value reducing factors

No.	Component group	Description
1	Boot lid / rear door	Boot lid - Glued / labelled - De-glue / neutralise
2	Roof	Roof - dent(s) - Smooth repair work
3	Rear bumper	Rear bumper - Scratch(es) - Smart repair
4	Misc.	Inspection / maintenance - Due - Perform

Wear and tear

No.	Component group	Description
1	Front bumper	Front bumper - Stone chips - No deduction
2	Bonnet	Bonnet - Stone chips - No deduction

The vehicle shows signs of wear and tear commensurate with its age and use.

Order/Scope of Order

An order was placed to prepare a sales report for the described vehicle. This report includes the following:

- Description of key vehicle information
- Documentation of equipment features
(Delivery by third-party service providers)
- Documentation of damage, defects, missing parts
- Documentation of prior damage, unrepaired prior damage, repainting
- A brief visual or functional inspection of the equipment details, if possible.
(Functional testing of driver assistance systems is not included in the scope of services!)
- a photographic documentation of the vehicle



Basis for the order

This product is based on the guidelines for vehicle returns and valuations published by Alphabet Fleet GmbH. The expert makes the specific findings in each individual case objectively, within the framework of the prescribed standards, based on their own expertise.

The vehicle inspection takes place in a fully assembled, unassembled state.

Damage or defects that can only be detected during disassembly/diagnostic work or through further investigation remain within the realm of prognostic risk. An increased risk exists due to concealed defects caused by fraudulent misrepresentation and which were not identifiable by the expert.

Damage or defects resulting from normal use or wear and tear of the vehicle will be accepted in accordance with the applicable standard.

There was no explicit identification or monetary consideration of the expected features within the product.

Features which, in their nature and extent, slightly exceed normal use but do not constitute unacceptable damage, will be documented and indicated as signs of wear, if applicable.

Damage or defects that, according to the applicable standard, can no longer be attributed to normal use or wear and tear are listed under "Value Reducing Factors" in the product description.

Depending on the product specification, a monetary ID can be provided. If this takes place, the costs can be 100% d or pro rata depending on the vehicle's age and mileage.

Previous damages

No apparent prior damage that had been repaired could be found on the vehicle.

Comments

Der montierte Winterradsatz ist kein Bestandteil der Ausstattung.

ALPHABET



Figure 1: Diagonal front (left)

ALPHABET



Figure 2: Diagonal front (right)

ALPHABET



Figure 3: Diagonal rear (left)

ALPHABET



Figure 4: Diagonal rear (right)



Figure 5: Interior - front



Figure 6: Interior - rear



Figure 7: Instrument cluster



Figure 8: Instrument panel



Figure 9: Interior 360° view



Figure 10: Cargo area



Figure 11: VIN



Figure 12: Mounted tyres



Figure 13: Documents



Figure 14: Documents



Figure 15: Documents

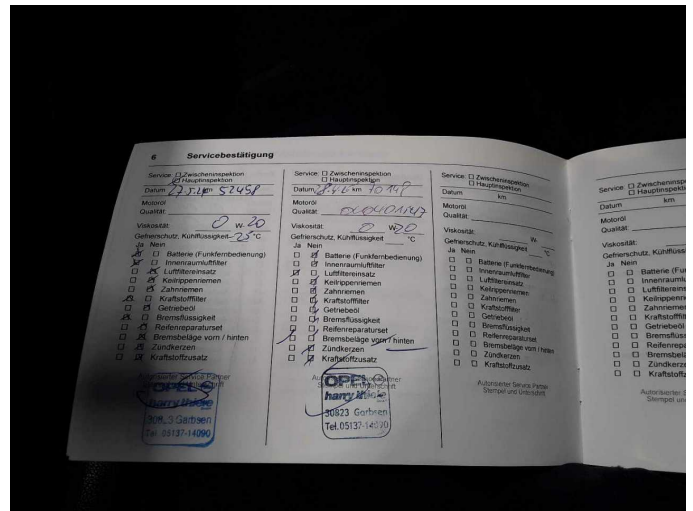


Figure 16: Documents

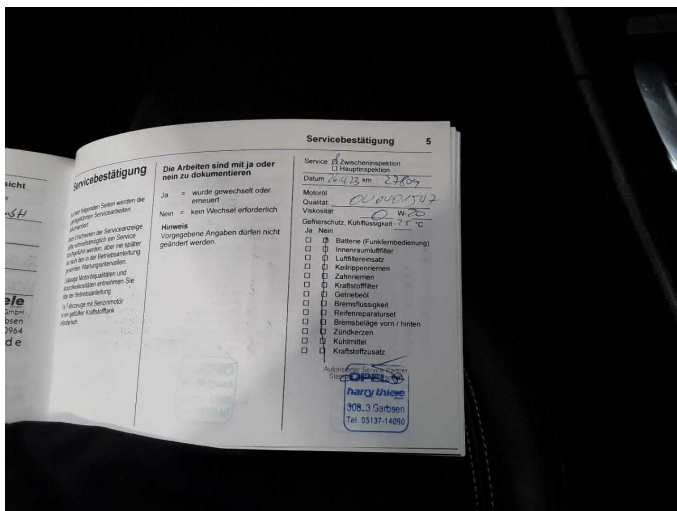


Figure 17: Documents



Figure 18: Additional tyres



Figure 19: Navigation



Figure 20: Misc.

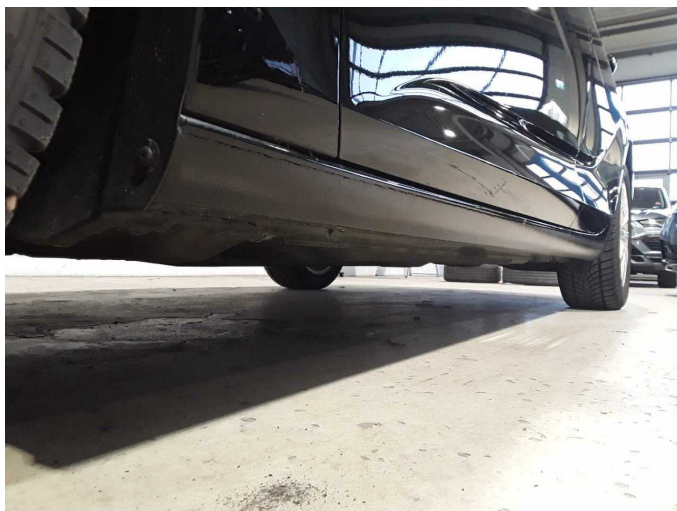


Figure 21: Misc.



Figure 22: Misc.



Figure 23: Misc.

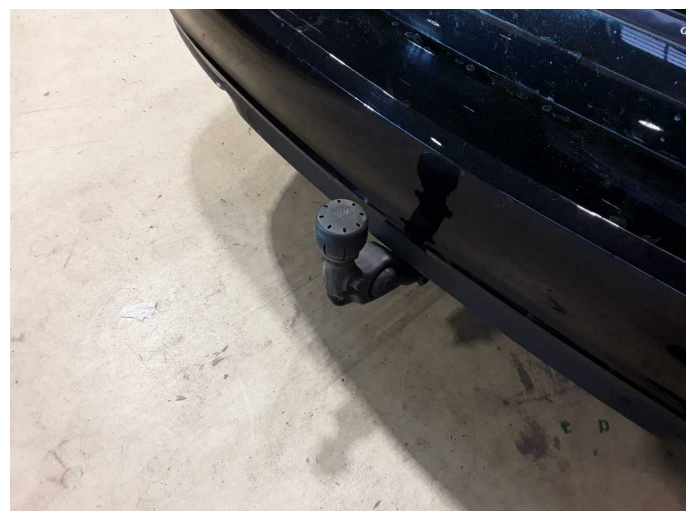


Figure 24: Misc.



Figure 25: Misc.



Figure 26: Misc.



Figure 27: Misc.

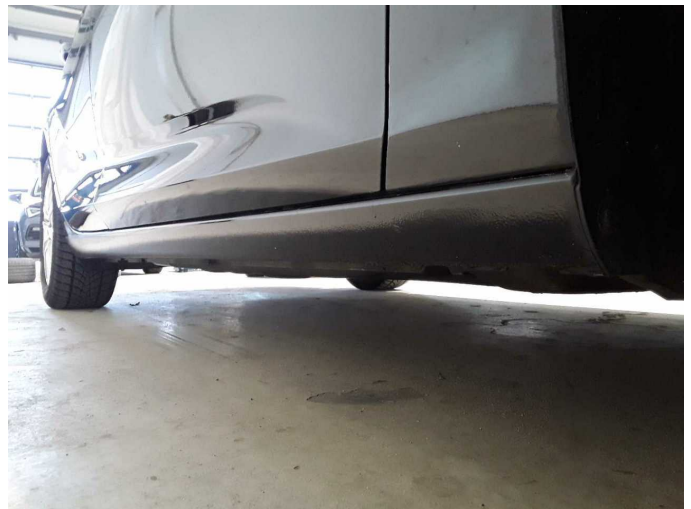


Figure 28: Misc.

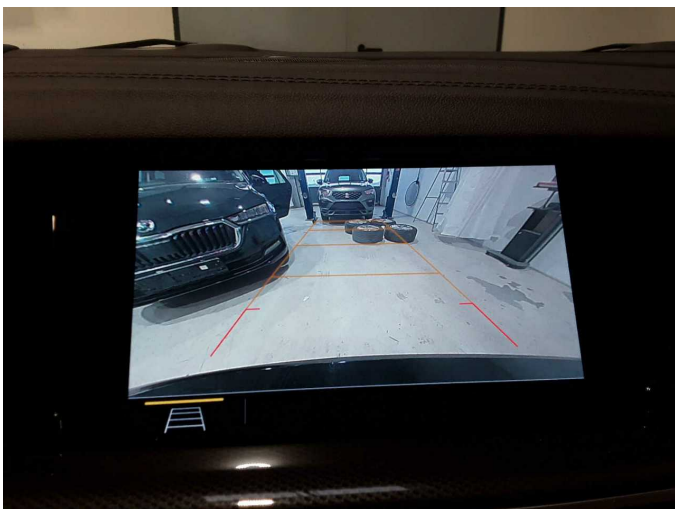


Figure 29: Misc.



Figure 30: Misc.



Damage 1: Boot lid / rear door: Boot lid - Glued / labelled - De-glue / neutralise



Damage 2: Roof: Roof - dent(s) - Smooth repair work



Damage 2: Roof: Roof - dent(s) - Smooth repair work



Damage 3: Rear bumper: Rear bumper - Scratch(es) - Smart repair



Damage 3: Rear bumper: Rear bumper - Scratch(es) - Smart repair



Damage 4: Misc.: Inspection / maintenance - Due - Perform



Wartungshistorie

(gemäß Auftraggeber Informationen)

Fahrgestellnummer: W0VZT8EP4N1006524

Hersteller / Modell: OPEL OPEL Insignia Sports Tourer 2.0 Diesel Aut. Business

Datum	KM-Stand	Beschreibung
29.04.2025	70.262	AU; Bremse Sonstiges; Bremsklötze hinten; Bremsscheiben hinten; Luftfiltereinsatz ern; Motoröl b. Wartung; Ölfilter ern; Regelwartungsdienst; Wartung Sonstiges
22.11.2024	61.558	Batterie ern; Systemtest/Eigendiagnose
31.05.2024	52.458	Bremsflüssigkeit; Bremsflüssigkeit ern; Kraftstofffilter ern; Motoröl b. Wartung; Ölfilter ern; Regelwartungsdienst; Wartung Sonstiges
02.05.2023	27.809	Motoröl b. Wartung; Ölfilter ern; Regelwartungsdienst; Wartung Sonstiges