

## Expertise

Protocol number: 46352732  
Order No. / Reference: 26482530  
Inspection date: 7 Jul 2026

Manufacturer: Skoda

Model: Superb Combi 2.0 TDI DSG 4x4 L&K

VIN: TMBLR0NZXTC007177



### Vehicle details

#### Manufacturer / Type / Model / Equipment

Skoda Superb Combi 2.0 TDI DSG 4x4 L&K

**Vehicle Identification number** TMBLR0NZXTC007177

**Mileage (Read)** 29,989 km

**First registration** 13 Aug 2025

**Number of holders** 1

**Next periodical technical inspection** 08/2028

(Report not on hand)

**Power / Engine displacement** 142 kw / 1,968 ccm

**Fuel type / Cylinder** Diesel / 4

**Gearbox / Number of gears** Automatic / 7

**Type of drive** All-wheel drive

**Type of vehicle** Station wagon

**Colour / colour code** Atlantik-Blau Metallic

**Doors / Seats** 5 / 5

**Upholstery type** Leather

**Colour of upholstery** Brown



## Vehicle details

<b>Maintenance booklet / proof</b>	Non-existent	<b>Next maintenance in</b>	100 km
<b>Key is / should be</b>	3 / 3	<b>FZG documents</b>	ZB#2 (B) was available (copy), ZB#1 (S) was not available.
		<b>Letter No.</b>	HQ791037
<b>Previous damage / Accident</b>	None detectable	<b>Repainting</b>	None detectable
<b>Inspection conditions</b>	sufficient	<b>Lifting equipment / pit</b>	No
<b>Test drive</b>	Not performed	<b>Engine function test</b>	Performed
<b>Manufacturer key number/ type code number</b>	8004 / AYA 00098		
<b>Emission standard</b>	EURO6;WLTP;EB;PI/CI;M, N1, N2	<b>fine dust sticker</b>	
<b>Permitted total weight</b>	2,320 kg	<b>Empty weight</b>	

## Tyres

### Mounted tyres

#	Tyre size	Type of tyre	Manufacturer	Tread depth
1)	235/45 R18 94W	Summer tyres (with run-flat tyres) on Light alloy	Pirelli	5mm / 5mm
2)	235/45 R18 94W	Summer tyres (with run-flat tyres) on Light alloy	Pirelli	5mm / 5mm

### Additional tyres

#	Tyre size	Type of tyre	Manufacturer	Tread depth
1)	215/55 R17 98V	Winter tyres on Light alloy	Pirelli	7mm / 7mm
2)	215/55 R17 98V	Winter tyres on Light alloy	Pirelli	8mm / 8mm

### Replacement

Typ	Tyre size	Type of tyre	Manufacturer	Tread depth
N	125/70 R18 99M	Summer tyres on Steel	Sonstige	6 mm

**Legend: Tread depth information for the left tire is listed first, for the right tire it is listed second on the axle in the direction of travel.**

TÜV SÜD Auto Partner GmbH  
Wiesenring 2  
04159 Leipzig

Inspection location  
ARS Altmann AG Automobillogistik  
Römerstraße 3  
64560 Riedstadt



## Equipment



## Standard equipment

- Storage compartments in the front door panels with 1.5l bottle holders
- Airbag, driver and passenger
- Airbag: Side airbags, front center airbag and front and rear head airbags
- Anti-lock braking system (ABS)
- Attention and fatigue assistant
- Exterior mirrors and door handles in body color
- Cup holders in the front center console
- Hydraulic brake assist (HBA)
- Cargo elements in the trunk
- Grey headliner
- Digital Cockpit Plus
- Ice scraper in the fuel filler flap
- Electronic transverse differential lock (XDS+)
- Electric windows front and rear, including anti-pinch protection and electric child safety lock
- Transmission: 7-speed dual-clutch transmission (DSG)
- Heated rear window
- Interior LED lights at the front with 2 reading lights, 2 reading lights at the rear
- Climatronic air conditioning (3-zone)
- Rear headrests (3), height adjustable
- Stainless steel loading edge
- Remote release of the rear seat backrests in the trunk
- Center armrest with storage compartment and 12-volt socket
- Multi-collision brake
- Package: Chrome (Combi)
- Package: EU-NCAP (Bumpers with enhanced and predictive pedestrian protection measures - Traffic sign recognition - Emergency Steering and Turn Assist - Crossroad Assist - Front radar assist including City Emergency Braking and pedestrian and cyclist detection - Intelligent Speed Assist (ISA) - Lane Assist - Side Assist and Exit Warning)
- Package: Transport (Combi) (Luggage compartment net program (3 nets) - Luggage compartment cover with flexible storage pocket with electric roller blind release - Comfort opening with electric tailgate operation - KESSY - Anti-theft alarm system including safe system with interior monitoring and tilt sensor)
- Radio accessories: 2 USB charging ports in the center console
- Radio accessories: Digital radio reception DAB+
- Radio accessories: USB charging port in the rearview mirror (15W)
- Umbrella and broom compartments in the front doors
- Tire pressure monitoring
- Rear view camera
- LED safety lights in the front and rear doors
- Seats: Ergo Comfort front seats
- SKODA Care Connect
- SKODA Infotainment Online
- 12V power outlet in the luggage compartment
- Storage pockets on the backs of the front seats including smartphone pockets
- Airbag, driver's knee airbag
- Ambient lighting
- Trailer hitch preparation including trailer stabilization
- Traction control (ASR)
- Electrically adjustable, heated and folding exterior mirrors, with boarding lights
- Hill start assist
- third brake light
- roof grab handles four
- Diesel particulate filter
- Digital rotary controls (Smart Dials)
- Electronic parking brake including auto-hold function
- Electronic Stability Control (ESC)
- Luggage compartment lighting with 2 lamps
- Cruise control system including speed limiter (speed limiter)
- Rear window wiper including windshield washer system
- Interior mirror automatically dimming
- ISOFIX preparations on the front passenger seat and the outer rear seats including top tether anchorage
- Front headrests, height and length adjustable
- LED footwell lighting front and rear
- electric auxiliary air heater
- Engine drag torque control (MSR)
- Multifunctional camera (for driver assistance systems)
- eCall+ emergency call function
- Package: Drive Plus (Adaptive chassis DCC Plus - Driving profile selection - Progressive steering)
- Package: Light & Sight (Matrix LED headlights with Light Assist and Welcome Effect - Dynamic High Beam Assist - Dynamic and automatic headlight range control - LED rear reflectors with dynamic turn signals, crystal design and Welcome Effect - Rear fog lights on both sides, reversing lights on both sides - Cornering and rough road lights)
- Package: Winter (Heated front seats and outer rear seats - Wireless heated windshield)
- Front and rear parking sensors with maneuvering brake function
- Phone box with charging function 15 W
- Proactive occupant protection with rear impact detection
- Radio accessories: Bluetooth hands-free system
- Radio accessories: CANTON sound system with 14 speakers
- Radio accessories: Wireless & Wired SmartLink
- Umbrella
- Rain sensor and driving light assistant
- Wheels: 18" Belatrix alloy wheels, diamond-cut anthracite
- Superb seat belts
- Seats: Heated front seats
- Seats: Rear seat backrest split 60:40, foldable with center armrest



- Sunset (rear window and rear side windows tinted dark)
- Textile floor mats
- Front door sill trims
- Lashing eyes in the luggage compartment
- Preparation for alcohol immobilizer
- Central locking accessories: 3rd vehicle key

- Sun visors with illuminated make-up mirror on driver and passenger side
- Daytime running lights with cornering lights and coming home function
- Glazing: Acoustic glazing in the front side windows and Sunset
- Electronic immobilizer

**Extra equipment**

- Swiveling trailer hitch including trailer stabilization with trailer maneuvering assistant (ARA)
- Package: Driving Assistance Plus (Travel Assist Plus: - Adaptive Cruise Control ACC (control range up to 210 km/h, cruise control system omitted) - Adaptive Lane Keeping Assist (Lane Assist +) - Traffic Jam and Emergency Assist - Intelligent Park Assist, front and rear parking sensors - Trained Park Assist - Remote Park Assist - 360° Area View cameras)
- Package: Infotainment Plus (Navigation system - 13" infotainment display - Display cleaner - Head-up display - Infotainment Online (3-year subscription))

- Luggage net partition
- Interior Design Selection Suite L&K Cognac (Interior fittings with leather and imitation leather combination in cognac with L&K logo on the headrest and perforated seat panels - Kida decorative inlays - decorative pad in imitation leather in cognac with double stitching in cognac)
- Package: Family (Combi) (Sunshade roller blind for rear side windows - Tablet holder on the headrest (not with Sportline) - Sleeping package (sleeping headrest + blanket) - Rear side airbags - Waste bin)
- Panoramic sunroof, electric
- Auxiliary heater with radio remote control

**Brief expert findings**

Documents submitted	At the time of the inspection, the vehicle registration certificate Part 2 (title) was available, but the vehicle registration certificate Part 1 (document) was not. (Copy)
VIN comparison	The vehicle identification number (VIN) was read from the vehicle and its conformity with the submitted documents was confirmed by the undersigned during the inspection.
Inspection	The inspection conditions were sufficient for the assessment of the vehicle. No lifting equipment or pit was available for inspecting the vehicle. Therefore, inspection of the vehicle's underside was only possible to a limited extent.
Test drive	No test drive/shunting maneuver was carried out during the inspection of the vehicle.
Engine function test	An engine test run was performed.

**Value reducing factors**

No.	Component group	Description
1	Door - front left side	Door edge - Scratch(es) - Smart repair

**Wear and tear**

No.	Component group	Description
1	Vehicle glazing	Windscreen - Stone chips - No deduction
2	Bonnet	Bonnet - Stone chips - No deduction

The vehicle shows signs of wear and tear commensurate with its age and use.



## Order/Scope of Order

An order was placed to prepare a sales report for the described vehicle. This report includes the following:

- Description of key vehicle information
- Documentation of equipment features  
*(Delivery by third-party service providers)*
- Documentation of damage, defects, missing parts
- Documentation of prior damage, unrepaired prior damage, repainting
- A brief visual or functional inspection of the equipment details, if possible.  
*(Functional testing of driver assistance systems is not included in the scope of services!)*
- a photographic documentation of the vehicle

## Basis for the order

This product is based on the guidelines for vehicle returns and valuations published by Alphabet Fleet GmbH. The expert makes the specific findings in each individual case objectively, within the framework of the prescribed standards, based on their own expertise.

The vehicle inspection takes place in a fully assembled, unassembled state.

Damage or defects that can only be detected during disassembly/diagnostic work or through further investigation remain within the realm of prognostic risk. An increased risk exists due to concealed defects caused by fraudulent misrepresentation and which were not identifiable by the expert.

Damage or defects resulting from normal use or wear and tear of the vehicle will be accepted in accordance with the applicable standard.

There was no explicit identification or monetary consideration of the expected features within the product.

Features which, in their nature and extent, slightly exceed normal use but do not constitute unacceptable damage, will be documented and indicated as signs of wear, if applicable.

Damage or defects that, according to the applicable standard, can no longer be attributed to normal use or wear and tear are listed under "Value Reducing Factors" in the product description.

Depending on the product specification, a monetary ID can be provided. If this takes place, the costs can be 100% d or pro rata depending on the vehicle's age and mileage.

## Previous damages

No apparent prior damage that had been repaired could be found on the vehicle.

## Comments

- Die Unterbodenbesichtigung war nur ebenerdig & eingeschränkt möglich. Mehrkosten möglich.
- Winterradsatz ist kein Bestandteil des Auslieferungsumfangs.



Figure 1: Diagonal front (left)



Figure 2: Diagonal front (right)



Figure 3: Diagonal rear (left)



Figure 4: Diagonal rear (right)



Figure 5: Interior - front



Figure 6: Interior - rear



Figure 7: Instrument cluster



Figure 8: Instrument panel



Figure 9: Interior 360° view



Figure 10: Cargo area

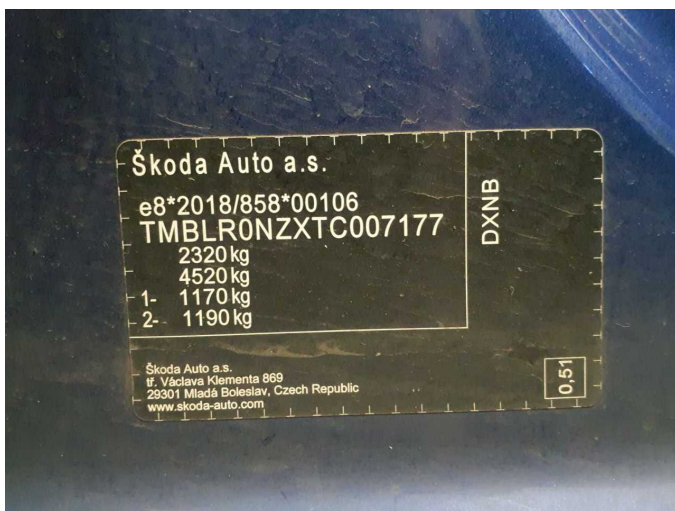


Figure 11: VIN



Figure 12: Mounted tyres

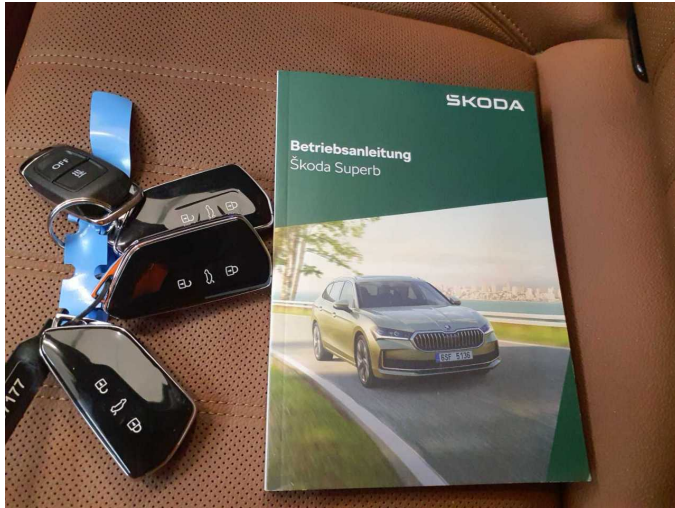


Figure 13: Documents

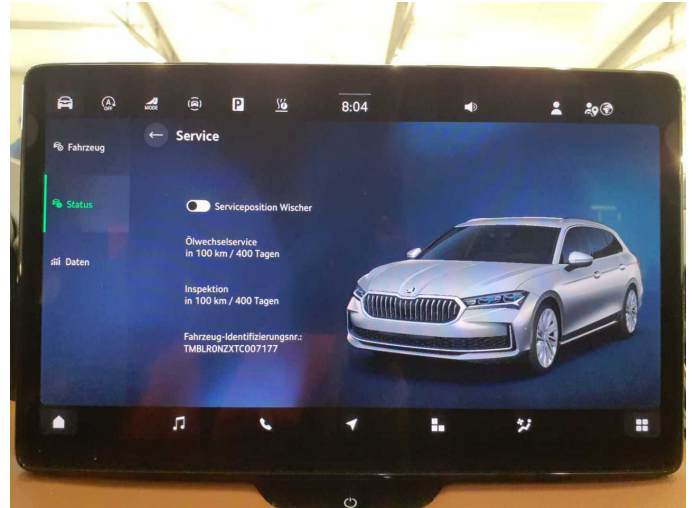


Figure 14: Documents



Figure 15: Additional tyres

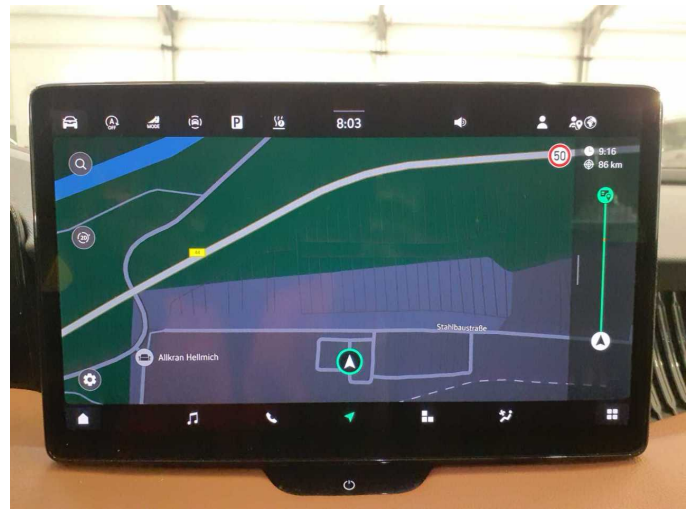


Figure 16: Navigation



Figure 17: Misc.



Figure 18: Misc.



Figure 19: Misc.



Figure 20: Misc.



Figure 21: Misc.



Figure 22: Misc.



Figure 23: Misc.



Figure 24: Misc.



Figure 25: Misc.



Figure 26: Misc.



Figure 27: Misc.



Figure 28: Misc.



Figure 29: Misc.



Figure 30: Misc.



Figure 31: Misc.



Figure 32: Misc.



Figure 33: Misc.



Figure 34: Misc.



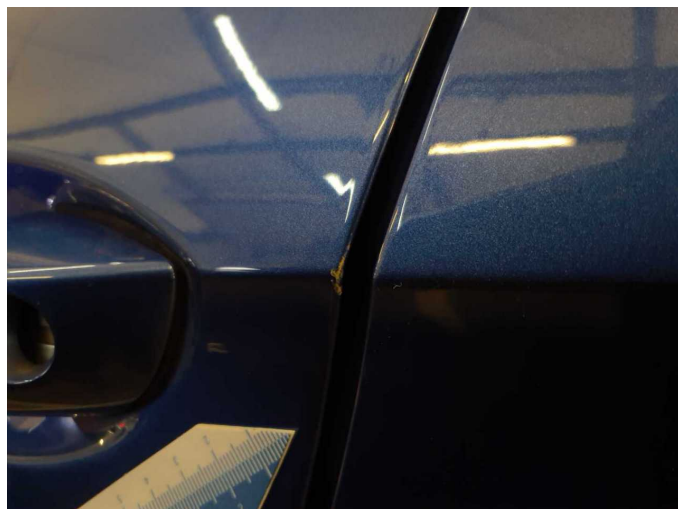
Figure 35: Misc.



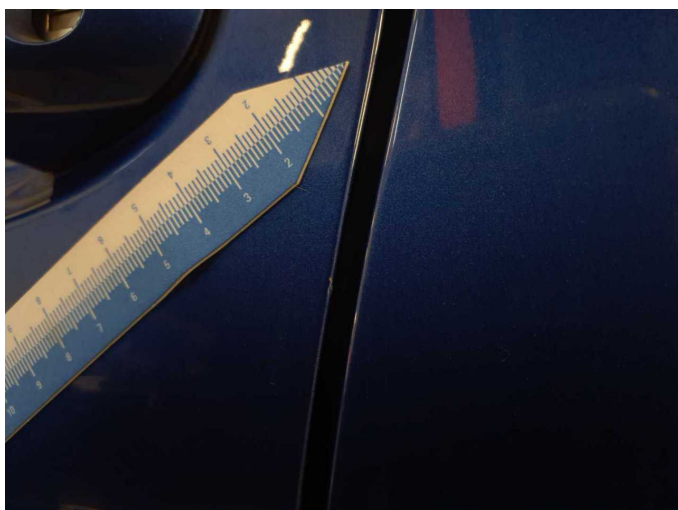
Figure 36: Misc.



**Damage 1:** Door - front left side: Door edge - Scratch(es) - Smart repair



**Damage 1:** Door - front left side: Door edge - Scratch(es) - Smart repair



**Damage 1:** Door - front left side: Door edge - Scratch(es) - Smart repair