

## Expertise

Protocol number: 45689421  
Order No. / Reference: 26414751  
Inspection date: 28 May 2026

Manufacturer: Seat

Model: Leon 2.0 TDI DSG FR Plus

VIN: VSSZZKL2RR024963



### Vehicle details

#### Manufacturer / Type / Model / Equipment

Seat Leon 2.0 TDI DSG FR Plus

**Vehicle Identification number** VSSZZKL2RR024963

**Mileage (Read)** 30,752 km

**First registration** 26 Jan 2024

**Number of holders** 1

**Power / Engine displacement** 110 kw / 1,968 ccm

**Fuel type / Cylinder** Diesel / 4

**Gearbox / Number of gears** Automatic / 7

**Type of drive** Front drive

**Type of vehicle** Saloon car

**Colour / colour code** Nevada Weiß Metallic

**Doors / Seats** 5 / 5

**Upholstery type** Alcantara / Leather

**Colour of upholstery** Black-Anthracite



Vehicle details			
<b>Maintenance booklet / proof</b>	digital proof / complete	<b>Next maintenance in</b>	15,300 km
<b>Last service on / at</b>	07/2025 at 20,018 km		
<b>Key is / should be</b>	2 / 2	<b>FZG documents</b>	ZB#2 (B) was available (copy), ZB#1 (S) was not available.
		<b>Letter No.</b>	GV870495
<b>Previous damage / Accident</b>	None detectable	<b>Repainting</b>	None detectable
<b>Inspection conditions</b>	sufficient	<b>Lifting equipment / pit</b>	yes
<b>Test drive</b>	Not performed	<b>Engine function test</b>	Performed
<b>Manufacturer key number/ type code number</b>	7593 / ASE 00779		
<b>Emission standard</b>	EURO6;WLTP;AP;PI/CI; M, N1 I	<b>fine dust sticker</b>	
<b>Permitted total weight</b>	1,970 kg	<b>Empty weight</b>	

## Tyres

Mounted tyres				
#	Tyre size	Type of tyre	Manufacturer	Tread depth
1)	205/55 R16 91H	Winter tyres on Light alloy	Goodyear	5mm / 5mm
2)	205/55 R16 91H	Winter tyres on Light alloy	Goodyear	5mm / 5mm
Additional tyres				
#	Tyre size	Type of tyre	Manufacturer	Tread depth
1)	225/40 R18 92Y	Summer tyres on Light alloy	Bridgestone	5mm / 5mm
2)	225/40 R18 92Y	Summer tyres on Light alloy	Bridgestone	6mm / 6mm
Replacement				
Typ	Tyre size	Type of tyre	Manufacturer	Tread depth
N	125/70 R18 99M	Summer tyres on Steel	Sonstige	4 mm

**Legend: Tread depth information for the left tire is listed first, for the right tire it is listed second on the axle in the direction of travel.**



## Equipment

### Standard equipment

- Storage compartment in the front doors
- Driver and passenger airbags
- Airbag: Head airbag system, front and rear
- Electrically folding exterior mirrors including passenger side mirror lowering
- LED turn signals integrated into the exterior mirrors
- third brake light
- Electronic differential lock XDS
- Electronic Stability Control (ESC) including Anti-lock Braking System (ABS)
- Gear recommendation display
- Luggage compartment lighting
- Cruise control system
- Illuminated glove compartment
- rear window wiper
- ISOFIX child seat restraint system, two anchor points in the outer 2nd row of seats
- Front headrests (2)
- LED technology for headlights, daytime running lights and taillights
- Reading light front/rear
- Fatigue detection
- Emergency call service
- Upholstery: Cloth
- Radio accessories: 6 speakers
- Radio accessories: Digital radio reception DAB+
- Tire pressure monitoring system
- paddle shifters on the steering wheel
- SEAT Drive Profile
- Side skirts in Cosmo Grey
- Power steering
- Seats, passenger seat height adjustable
- Seats: Lumbar support for front passenger
- Seats: Rear seat backrest asymmetrically split and foldable
- Sport pedals and footrest in aluminum
- Sport suspension "FR"
- Start-stop system
- Illuminated front door sill trims
- Front Assist area monitoring system with City Emergency Braking function
- Electronic immobilizer
- Central locking with remote control
- Storage pockets on the backs of the front seats
- Airbag: Passenger airbag deactivation
- Airbag: Side airbag for driver and front passenger
- Electrically adjustable and heated exterior mirrors
- Exterior mirror housings painted in Cosmo Grey
- On-board computer
- Diesel particulate filter
- Electronic parking brake
- Electric window regulator with anti-pinch protection and one-touch function
- luggage compartment cover
- Speed limiter
- Transmission: 7-speed DSG
- Heated rear window
- Rear spoiler in Cosmo Grey
- Keyless Go (engine start/stop button)
- "Climatronic" air conditioning system
- Rear headrests (3)
- Steering wheel: Three-spoke leather steering wheel with multifunction and logo
- Lights: Full LED taillights
- Fog lights with cornering light function in LED technology
- Package: LED interior lighting package
- Radio: Media System Plus 8.25"
- Radio accessories: Bluetooth interface with integrated hands-free system and audio streaming
- Wheels: Alloy wheels (4) 7.5 J x 18" "Performance II" in Cosmo Grey, diamond-turned
- Side windows from the 2nd row of seats and rear window are dark tinted.
- Seat belts: Three-point automatic front and rear
- Seats: Driver's seat with height adjustment
- Seats: Lumbar support for driver
- Seats: Sport comfort seats in the front
- Sun visor on driver and passenger side with make-up mirror and lighting
- Lane departure warning system
- Power outlet: 12V socket at the front
- Ultrasonic rear parking aid
- Lashing eyes in the luggage compartment
- Virtual Cockpit
- thermal insulation glazing



### Extra equipment

- Airbag: Rear side airbags and driver's knee airbag
- Roof: Panoramic glass sunroof, electric (with sunshade blind)
- Package: Business Package INFOTAIN (Navigation system, prepared for activation of the SEAT CONNECT Online anti-theft package - Infotainment, navigation system with 10" display, 3D navigation, voice control, MAPCARE with integrated map for Europe - Wireless Full Link Connectivity incl. Android Auto and Apple CarPlay - Connectivity Box in the storage compartment of the center console incl. wireless charger - Anti-theft alarm system incl. interior monitoring, backup horn and tow-away protection)
- Package: Light and Sight (Rain sensor - Automatically dimming interior mirror - Light sensor with automatic headlight control - Automatic coming home and leaving home function)
- Package: Winter Package (heated steering wheel - heated front seats)
- PreCrash Assist (Proactive occupant protection system)
- Wheels: Spare wheel as emergency wheel
- Rear view camera
- Keyless locking and unlocking system; Kessy Advanced
- Power outlet: 230V socket in the luggage compartment
- Swiveling towbar with electric release
- Black headliner
- Lights: Full LED headlights (Full LED headlights - "Hola!" light projection for greeting under the exterior mirrors - Dynamic headlight range control - Rear turn signals with dynamic LED technology Infinite Light; Dynamic LED light strip at the rear)
- Package: Dinamica - Package (Seat center section in Dinamica microfiber, color black - Driver's seat electrically adjustable with memory function - Lumbar support driver's side, electrically adjustable - Exterior mirrors with memory function - Rear center armrest with pass-through option)
- Package: Driving Assistance Package XL for navigation system (Adaptive Cruise Control ACC up to 210 km/h with Predictive Cruise Control PCC - High Beam Assist - Side Assist incl. Blind Spot Assist - Exit Assist Information and Exit Warning - Lane Keeping Assist Plus incl. Travel Assist, Emergency Assist and Traffic Jam Assist - Traffic Sign Recognition)
- Radio accessories: BeatsAudio sound system (10 speakers (with subwoofer), digital 12-channel amplifier, subwoofer, 340 watts total power)
- Smart Ambient Light (All-around ambient lighting in the interior - Welcome ceremony - Interaction with assistance systems and Drive Profile in FR)

### Brief expert findings

Documents submitted	At the time of the inspection, the vehicle registration certificate Part 2 (title) was available, but the vehicle registration certificate Part 1 (document) was not. (Copy)
VIN comparison	The vehicle identification number (VIN) was read from the vehicle and its conformity with the submitted documents was confirmed by the undersigned during the inspection.
Inspection	The inspection conditions were sufficient for the assessment of the vehicle. Lifting equipment and/or a pit were available for examining the vehicle.
Test drive	No test drive/shunting maneuver was carried out during the inspection of the vehicle.
Engine function test	An engine test run was performed.

### Value reducing factors

No.	Component group	Description
1	Misc.	Main inspection - No evidence - No deduction
2	Boot lid / rear door	Boot lid - dent(s) - Smooth repair work
3	Front bumper	Front bumper (Kratzer) - Stone chips - Paint

### Wear and tear

No.	Component group	Description
1	Door - rear right side	Door handle - outside - Abrasion - No deduction

The vehicle shows signs of wear and tear commensurate with its age and use.



## Order/Scope of Order

An order was placed to prepare a sales report for the described vehicle. This report includes the following:

- Description of key vehicle information
- Documentation of equipment features  
*(Delivery by third-party service providers)*
- Documentation of damage, defects, missing parts
- Documentation of prior damage, unrepaired prior damage, repainting
- A brief visual or functional inspection of the equipment details, if possible.  
*(Functional testing of driver assistance systems is not included in the scope of services!)*
- a photographic documentation of the vehicle

## Basis for the order

This product is based on the guidelines for vehicle returns and valuations published by Alphabet Fleet GmbH. The expert makes the specific findings in each individual case objectively, within the framework of the prescribed standards, based on their own expertise.

The vehicle inspection takes place in a fully assembled, unassembled state.

Damage or defects that can only be detected during disassembly/diagnostic work or through further investigation remain within the realm of prognostic risk. An increased risk exists due to concealed defects caused by fraudulent misrepresentation and which were not identifiable by the expert.

Damage or defects resulting from normal use or wear and tear of the vehicle will be accepted in accordance with the applicable standard.

There was no explicit identification or monetary consideration of the expected features within the product.

Features which, in their nature and extent, slightly exceed normal use but do not constitute unacceptable damage, will be documented and indicated as signs of wear, if applicable.

Damage or defects that, according to the applicable standard, can no longer be attributed to normal use or wear and tear are listed under "Value Reducing Factors" in the product description.

Depending on the product specification, a monetary ID can be provided. If this takes place, the costs can be 100% or pro rata depending on the vehicle's age and mileage.

## Previous damages

No apparent prior damage that had been repaired could be found on the vehicle.

## Comments

Wartungshistorie gemäß Auftraggeber Informationen.

- Winterradsatz ist kein Bestandteil des Auslieferungsumfangs.



Figure 1: Diagonal front (left)



Figure 2: Diagonal front (right)



Figure 3: Diagonal rear (left)



Figure 4: Diagonal rear (right)



Figure 5: Interior - front



Figure 6: Interior - rear



Figure 7: Instrument cluster



Figure 8: Instrument panel



Figure 9: Interior 360° view



Figure 10: Cargo area

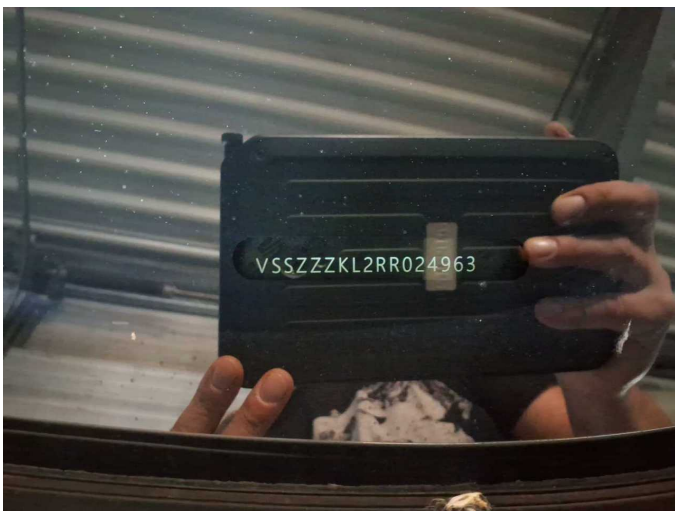


Figure 11: VIN



Figure 12: Mounted tyres



Figure 13: Documents



Figure 14: Additional tyres



Figure 15: Navigation



Figure 16: Misc.

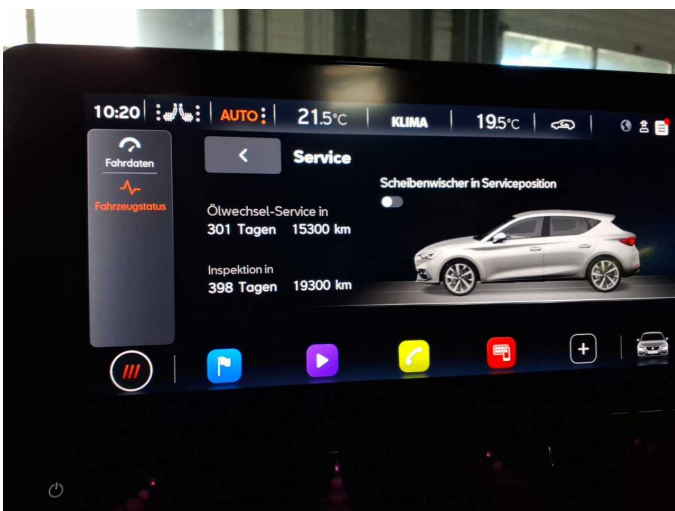


Figure 17: Misc.



Figure 18: Misc.



Figure 19: Misc.



Figure 20: Misc.

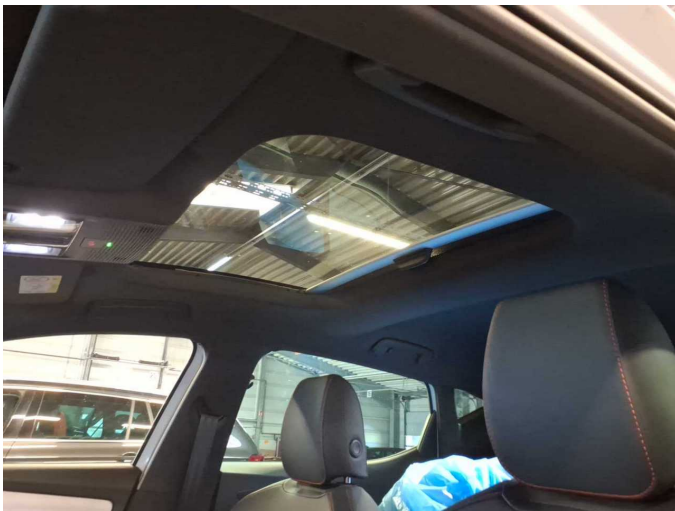


Figure 21: Misc.



Figure 22: Misc.



Figure 23: Misc.

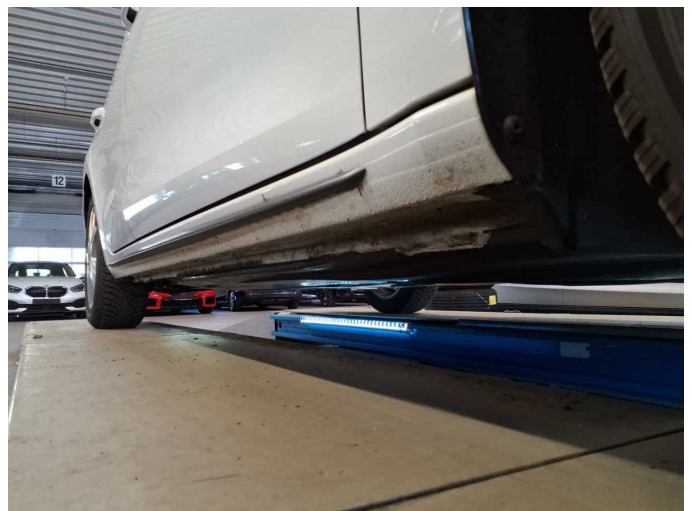


Figure 24: Misc.



Figure 25: Misc.



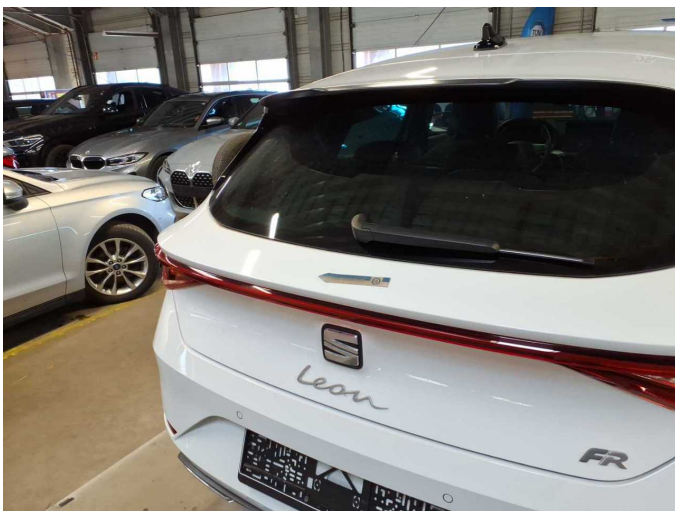
Figure 26: Misc.



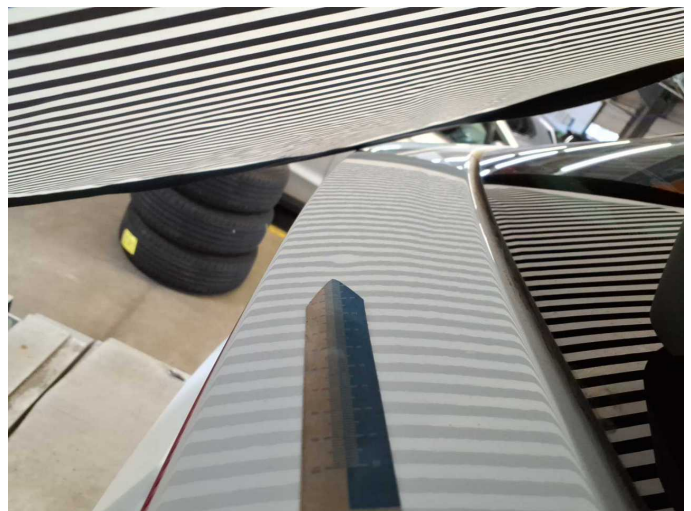
Figure 27: Misc.



Figure 28: Misc.



Damage 2: Boot lid / rear door: Boot lid - dent(s) - Smooth repair work



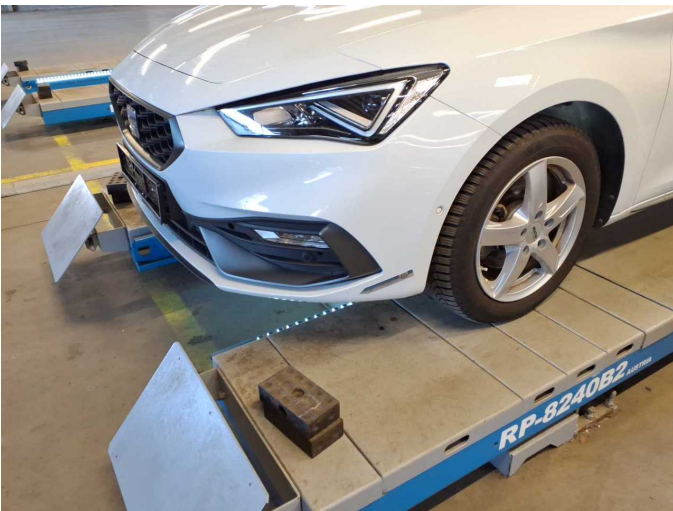
Damage 2: Boot lid / rear door: Boot lid - dent(s) - Smooth repair work



**Damage 3:** Front bumper: Front bumper (Kratzer) - Stone chips - Paint



**Damage 3:** Front bumper: Front bumper (Kratzer) - Stone chips - Paint



**Damage 3:** Front bumper: Front bumper (Kratzer) - Stone chips - Paint



**Damage 3:** Front bumper: Front bumper (Kratzer) - Stone chips - Paint



# Wartungshistorie

(gemäß Auftraggeber Informationen)

Fahrgestellnummer: VSSZZZKL2RR024963  
Hersteller / Modell: SEAT SEAT Leon 2.0 TDI DSG FR Plus

Datum	KM-Stand	Beschreibung
01.07.2025	20.018	Motoröl b. Wartung; Ölfilter ern; Regelwartungsdienst; Wartung Sonstiges