

## Expertise

Protocol number: 46286624  
Order No. / Reference: 26414559  
Inspection date: 2 Jul 2026

Manufacturer: Mercedes-Benz

Model: GLC 300 de 4Matic 9G-TRONIC Exclusive

VIN: W1N2539111V299108



### Vehicle details

#### Manufacturer / Type / Model / Equipment

Mercedes-Benz GLC 300 de 4Matic 9G-TRONIC Exclusive

**Vehicle Identification number** W1N2539111V299108

**Mileage (Read)** 177,822 km

**First registration** 7 Apr 2021

**Number of holders** 1

**Next periodical technical inspection** 05/2026  
(Report not on hand)

**Power / Engine displacement** 143 kw / 1,950 ccm

**Fuel type / Cylinder** Hybr.D/E ext.aufll / 4

**Gearbox / Number of gears** Automatic / 9

**Type of drive** All-wheel drive

**Type of vehicle** SUV

**Colour / colour code** Selenitgrau Metallic

**Doors / Seats** 5 / 5

**Upholstery type** Cloth / leather combination

**Colour of upholstery** Black

**Re-import** no

**readiness to drive** Roadworthy



Vehicle details			
<b>Maintenance booklet / proof</b>	digital proof / complete	<b>Next maintenance in</b>	106 Tag(e)
<b>Last service on / at</b>	10/2025 at 161,572 km		
<b>Key is / should be</b>	2 / 2	<b>FZG documents</b>	ZB#2 (B) was available (copy), ZB#1 (S) was not available.
		<b>Letter No.</b>	GC570623
<b>Previous damage / Accident</b>	Detectable	<b>Repainting</b>	None detectable
<b>Inspection conditions</b>	sufficient	<b>Lifting equipment / pit</b>	No
<b>Test drive</b>	Not performed	<b>Engine function test</b>	Performed
<b>readiness to drive</b>	Roadworthy		
<b>Manufacturer key number/ type code number</b>	2222 / ASV 00037		
<b>Emission standard</b>	EURO6;WLTP;AP;PI/CI; M, N1 I	<b>fine dust sticker</b>	
<b>Permitted total weight</b>	2,650 kg	<b>Empty weight</b>	

## Tyres

Mounted tyres				
#	Tyre size	Type of tyre	Manufacturer	Tread depth
1)	235/60 R18 107H	Winter tyres on Light alloy	Dunlop	4mm / 4mm
2)	235/60 R18 107H	Winter tyres on Light alloy	Dunlop	5mm / 5mm
Additional tyres				
#	Tyre size	Type of tyre	Manufacturer	Tread depth
1)	235/60 R18 103V	Summer tyres on Light alloy	Pirelli	5mm / 5mm
2)	235/60 R18 103V	Summer tyres on Light alloy	Pirelli	4mm / 4mm

**Legend: Tread depth information for the left tire is listed first, for the right tire it is listed second on the axle in the direction of travel.**



## Equipment

### Standard equipment

- Airbag for driver and front passenger
- Airbag: Side airbag for driver and front passenger
- Active Brake Assist
- 4MATIC all-wheel drive
- ATTENTION ASSIST
- Heated exterior mirrors (left and right), electrically adjustable from inside
- Roof rails in polished aluminum
- Tachometer
- DYNAMIC SELECT
- Electronic Stability Program (ESP)
- Chassis with higher ground clearance
- electric parking brake
- Transmission: 9G-TRONIC
- rear window wiper
- Instrument panel and door sills in ARTICO man-made leather
- Remote trunk lid release
- Instrument cluster with 2 tubular round instruments, 13.97 cm (5.5") multifunction display
- Headrests 5-way
- Steering wheel: Multifunction sports steering wheel in 3-spoke design in black leather
- Mercedes-Benz emergency call system
- Package: Storage
- Upholstery: ARTICO leatherette/Grenoble fabric
- Radio accessories: Digital radio
- Tire pressure monitoring system (TPMS)
- Windscreen wipers with rain sensor
- Seats: Rear seat backrests foldable
- Seats: Front seats electrically adjustable
- High-visibility vest for drivers
- Central locking
- Airbag: Kneebag for driver
- Airbag: Windowbags
- Acoustic environmental protection
- Anti-lock braking system (ABS)
- Automatic passenger airbag deactivation
- On-board computer
- Brake system with larger brake discs on the front axle
- Diesel particulate filter
- Third brake light in LED technology
- EASY-Pack cargo cover (removable)
- Driving light assistant
- Electric windows (4-way)
- Velour floor mats in interior color
- Rear window heated
- Interior headliner fabric crystal grey
- KEYLESS-GO start function
- Climate: THERMATIC automatic climate control with 2 climate zones
- Communication module (LTE) for the use of Mercedes me connect services
- Charging system: AC on-board charger (AC charging)
- Steering column mechanically adjustable in height and length
- Navigation accessories: Extended MBUX functions
- Package: Interior light
- Radio: MBUX multimedia system
- Radio accessories: Touchpad
- Remote Services Plus
- Power steering
- Seats: i-Size child restraint system on the outer rear seats
- Cruise control
- Immobiliser



### Extra equipment

- Head-up display
- Charging cable for household socket, 5m, smooth (This charging cable, also called Mode 2 cable, allows you to charge the vehicle battery at the household socket with up to 2.3 kW (230 V, 1-phase, 10 A) and fits sockets of type E/F CEE 7/7.)
- Package: Advanced Light (LED High Performance headlights and adaptive LED taillights, Adaptive Highbeam Assist)
- Package: Business (for plug-in hybrid vehicles) (Advanced Parking Package: Active Parking Assist PARKTRONIC with reversing camera; Advanced Infotainment Package: Media display with touch operation, smartphone integration - Apple CarPlay and Android Auto, connectivity package navigation, traffic sign assist; Comfort Package: Heated seats for driver and front passenger, seat comfort package - electric and manual adjustment options for the front seats)
- Radio accessories: Burmester surround sound system (with 13 speakers and 590 watts system power. Experience enhanced performance and exclusivity with legendary Burmester sound. The high-performance speakers create a first-class surround sound experience. This can be specifically optimized for the front and rear seats, intensifying the listening experience. A quality that is also visible thanks to the high-quality Burmester logos.)
- Decorative elements: open-pored black ash wood
- Paint finish: Metallic
- Package: Advanced Infotainment (Media display with touch operation, smartphone integration: Apple CarPlay and Android Auto, connectivity package, navigation, traffic sign assistant: thanks to intelligent linking of camera and map data, it can not only recognize speed limits, no-overtaking zones and their cancellation, but also displays no-entry signs and warns you of wrong-way driving.)
- Package: Advanced Park (Parking package with reversing camera, active parking assistant with PARKTRONIC)
- Package: Comfort (Seat heating for driver and front passenger, electric and manual adjustment options for driver and front passenger seats, electro-pneumatic 4-way lumbar support and lateral support adjustment with control element on the seat, electric seat cushion tilt adjustment, electric height adjustment, electric backrest adjustment, mechanical seat cushion depth adjustment by 6 cm with leg rest pad, mechanical longitudinal adjustment, mechanical headrest adjustment)
- Wheels: 45.7 cm (18") alloy wheels, 4-spoke design (vanadium silver painted with 235/60 R18 tires, 8 J x 18 ET 38)
- Heated windshield washer system
- Heat and sound insulating acoustic glass (The heat and sound insulating acoustic glass for the front side windows offers you greater noise comfort.)

### Brief expert findings

Documents submitted	At the time of the inspection, the vehicle registration certificate Part 2 (title) was available, but the vehicle registration certificate Part 1 (document) was not. (Copy)
VIN comparison	The vehicle identification number (VIN) was read from the vehicle and its conformity with the submitted documents was confirmed by the undersigned during the inspection.
Inspection	The inspection conditions were sufficient for the assessment of the vehicle. No lifting equipment or pit was available for inspecting the vehicle. Therefore, inspection of the vehicle's underside was only possible to a limited extent.
Test drive	No test drive/shunting maneuver was carried out during the inspection of the vehicle.
Engine function test	An engine test run was performed.
readiness to drive	The vehicle was roadworthy at the time of inspection.

### Value reducing factors

No.	Component group	Description
1	Side panel - rear left side	Side panel - dent(s) - Smart repair
2	Door - front left side	Door - dent(s) - Smart repair
3	Bonnet	Bonnet - Dent / paintcoat damage - Smart repair
4	Misc.	Main inspection - Due - Perform
5	Side panel - rear left side	Wheel well extension - Scratch(es) - Replace
6	Trim / covers	Brightware / decorative strip - Broken / torn - Replace
7	Rear bumper	Rear bumper - Scratch(es) - Paint
8	Front bumper	Front bumper - Scratch(es) - repair according to calculation



## Wear and tear

No.	Component group	Description
1	Vehicle glazing	Windscreen with lane departure assistant - Stone chips - No deduction

The vehicle shows signs of wear and tear commensurate with its age and use.

## Previous damages

No.	Previous damage	Extent of damage (Net)
1	Front, Provided by user / customer, from 11 Oct 2025	2.066,23 €
2	Side right, Provided by user / customer, from 21 Nov 2025	8.672,33 €

## Order/Scope of Order

An order was placed to prepare a sales report for the described vehicle. This report includes the following:

- Description of key vehicle information
- Documentation of equipment features  
*(Delivery by third-party service providers)*
- Documentation of damage, defects, missing parts
- Documentation of prior damage, unrepaired prior damage, repainting
- A brief visual or functional inspection of the equipment details, if possible.  
*(Functional testing of driver assistance systems is not included in the scope of services!)*
- a photographic documentation of the vehicle

## Basis for the order

This product is based on the guidelines for vehicle returns and valuations published by Alphabet Fleet GmbH. The expert makes the specific findings in each individual case objectively, within the framework of the prescribed standards, based on their own expertise.

The vehicle inspection takes place in a fully assembled, unassembled state.

Damage or defects that can only be detected during disassembly/diagnostic work or through further investigation remain within the realm of prognostic risk. An increased risk exists due to concealed defects caused by fraudulent misrepresentation and which were not identifiable by the expert.

Damage or defects resulting from normal use or wear and tear of the vehicle will be accepted in accordance with the applicable standard.

There was no explicit identification or monetary consideration of the expected features within the product.

Features which, in their nature and extent, slightly exceed normal use but do not constitute unacceptable damage, will be documented and indicated as signs of wear, if applicable.

Damage or defects that, according to the applicable standard, can no longer be attributed to normal use or wear and tear are listed under "Value Reducing Factors" in the product description.

Depending on the product specification, a monetary ID can be provided. If this takes place, the costs can be 100% d or pro rata depending on the vehicle's age and mileage.

## Previous damages

According to available information previous damages were repaired at the vehicle. Traces of repairs, which allow conclusions about the area of repair, were not recognizable during the inspection.



## Comments

- Die Unterbodenbesichtigung war nur ebenerdig & eingeschränkt möglich. Mehrkosten möglich.
- Für den montierten Radsatz wurde kein Nachweis erbracht.
- Winterradsatz ist kein Bestandteil des Auslieferungsumfangs.



Figure 1: Diagonal front (left)



Figure 2: Diagonal front (right)



Figure 3: Diagonal rear (left)



Figure 4: Diagonal rear (right)



Figure 5: Interior - front



Figure 6: Interior - rear



Figure 7: Instrument cluster



Figure 8: Instrument panel



Figure 9: Interior 360° view



Figure 10: Cargo area



Figure 11: VIN



Figure 12: Mounted tyres



Figure 13: Documents



Figure 14: Documents



Figure 15: Additional tyres



Figure 16: Navigation



Figure 17: Misc.

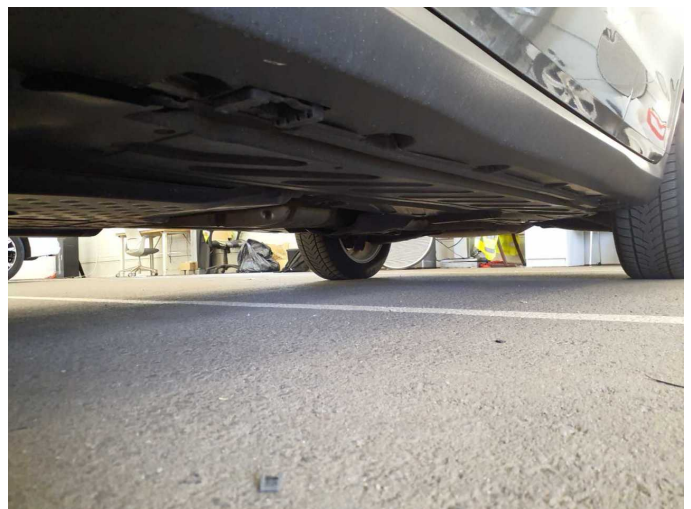


Figure 18: Misc.



Figure 19: Misc.



Figure 20: Misc.



Figure 21: Misc.



Figure 22: Misc.



Figure 23: Misc.

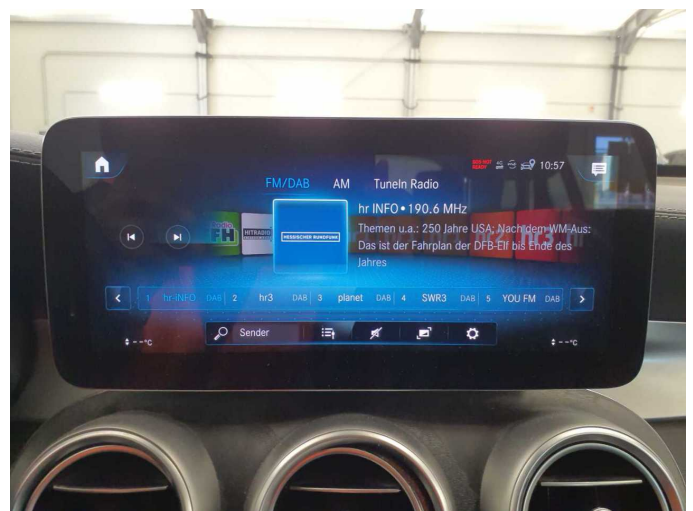


Figure 24: Misc.



Figure 25: Misc.



Figure 26: Misc.

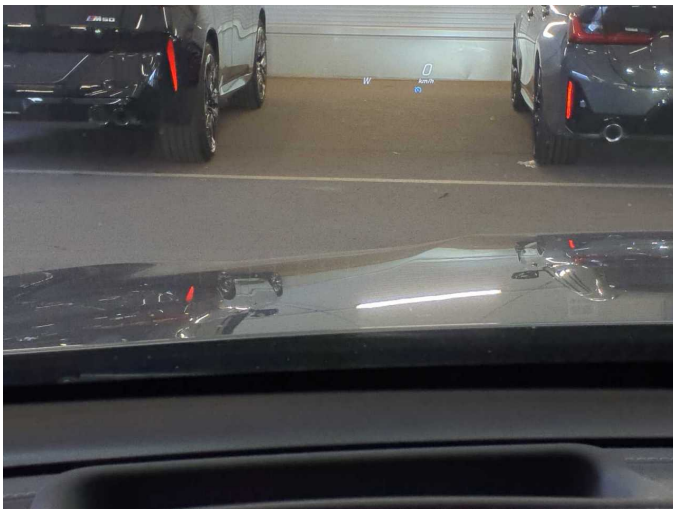


Figure 27: Misc.



Figure 28: Misc.



Figure 29: Misc.

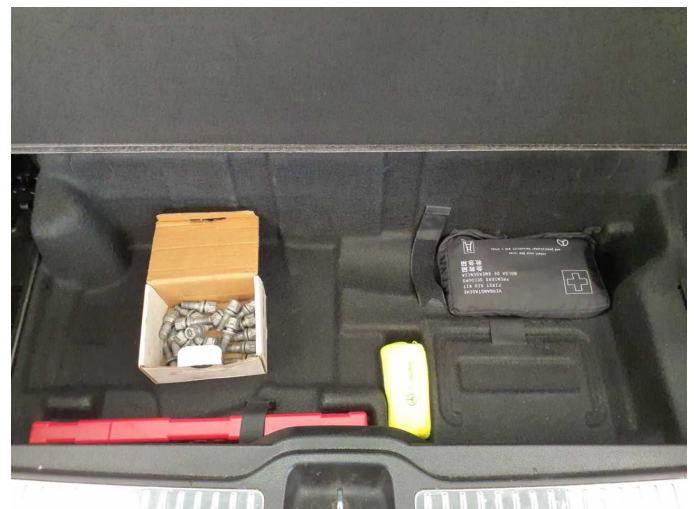


Figure 30: Misc.



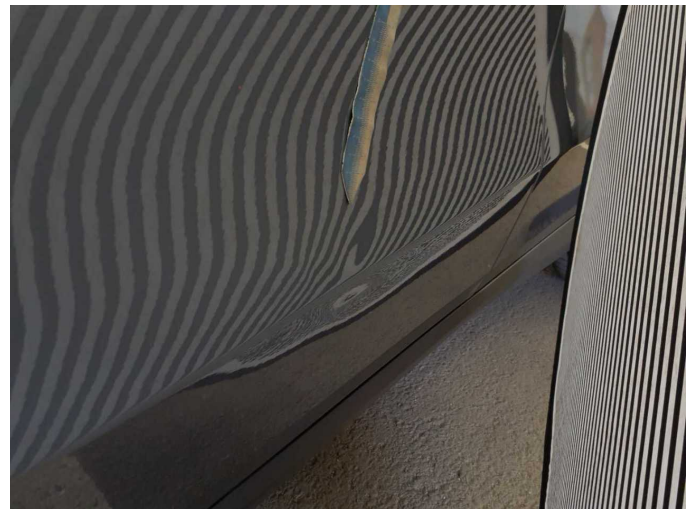
**Damage 1:** Side panel - rear left side: Side panel - dent(s) - Smart repair



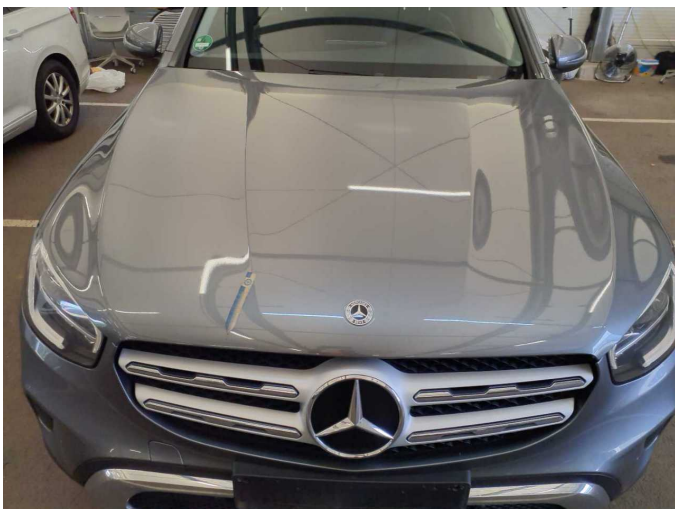
**Damage 1:** Side panel - rear left side: Side panel - dent(s) - Smart repair



**Damage 2:** Door - front left side: Door - dent(s) - Smart repair



**Damage 2:** Door - front left side: Door - dent(s) - Smart repair



**Damage 3:** Bonnet: Bonnet - Dent / paintcoat damage - Smart repair



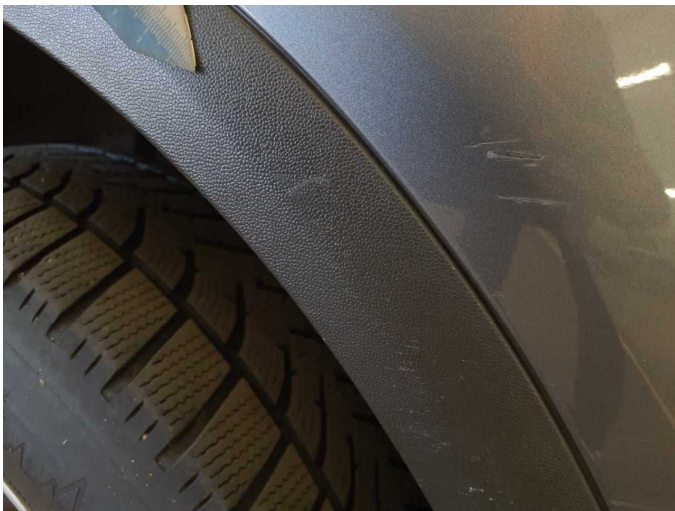
**Damage 3:** Bonnet: Bonnet - Dent / paintcoat damage - Smart repair



**Damage 3:** Bonnet: Bonnet - Dent / paintcoat damage - Smart repair



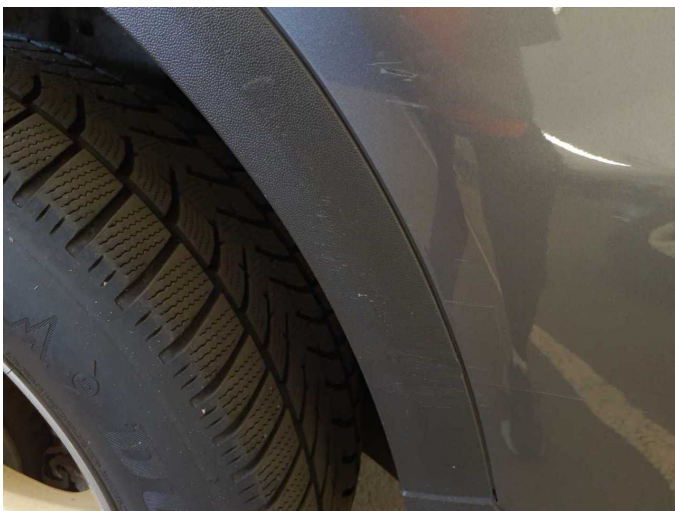
**Damage 5:** Side panel - rear left side: Wheel well extension - Scratch(es) - Replace



**Damage 5:** Side panel - rear left side: Wheel well extension - Scratch(es) - Replace



**Damage 5:** Side panel - rear left side: Wheel well extension - Scratch(es) - Replace



**Damage 5:** Side panel - rear left side: Wheel well extension - Scratch(es) - Replace



**Damage 6:** Trim / covers: Brightware / decorative strip - Broken / torn - Replace



**Damage 6:** Trim / covers: Brightware / decorative strip - Broken / torn - Replace



**Damage 7:** Rear bumper: Rear bumper - Scratch(es) - Paint



**Damage 7:** Rear bumper: Rear bumper - Scratch(es) - Paint



**Damage 7:** Rear bumper: Rear bumper - Scratch(es) - Paint



**Damage 7:** Rear bumper: Rear bumper - Scratch(es) - Paint



**Damage 8:** Front bumper: Front bumper - Scratch(es) - repair according to calculation



**Damage 8:** Front bumper: Front bumper - Scratch(es) - repair according to calculation



**Damage 8:** Front bumper: Front bumper - Scratch(es) - repair according to calculation



**Damage 8:** Front bumper: Front bumper - Scratch(es) - repair according to calculation



**Damage 8:** Front bumper: Front bumper - Scratch(es) - repair according to calculation



**Damage 8:** Front bumper: Front bumper - Scratch(es) - repair according to calculation



# Wartungshistorie

(gemäß Auftraggeber Informationen)

Fahrgestellnummer: W1N2539111V299108  
Hersteller / Modell: MERCEDES-BENZ MERCEDES-BENZ GLC 300 de 4Matic 9G-TRONIC Exclusive

Datum	KM-Stand	Beschreibung
09.12.2025	164.702	Systemtest/Eigendiagnose
16.10.2025	161.572	Regelwartungsdienst
10.04.2025	144.462	Batterie ern; Getriebeöl ern/prüfen; Reparatur Sonstiges; Systemtest/Eigendiagnose
16.01.2025	135.832	Regelwartungsdienst
21.05.2024	108.107	AU; Regelwartungsdienst
27.07.2023	80.935	Bremsklötze hinten; Regelwartungsdienst
14.10.2022	53.200	Regelwartungsdienst
18.02.2022	26.046	Regelwartungsdienst