

## Expertise

Protocol number: 46322618  
Order No. / Reference: 26497494  
Inspection date: 3 Jul 2026

Manufacturer: Opel

Model: Crossland X 1.5 Diesel Start/Stop Automatik Innovation

VIN: W0V7H9EJ2L4325605



### Vehicle details

#### Manufacturer / Type / Model / Equipment

Opel Crossland X 1.5 Diesel Start/Stop Automatik Innovation

<b>Vehicle Identification number</b>	W0V7H9EJ2L4325605
<b>Mileage (Read)</b>	113,186 km
<b>First registration</b>	28 Sept 2020
<b>Number of holders</b>	1
<b>Next periodical technical inspection</b> (Report on hand)	10/2027

<b>Power / Engine displacement</b>	88 kw / 1,499 ccm
------------------------------------	-------------------

<b>Fuel type / Cylinder</b>	Diesel / 4
-----------------------------	------------

<b>Gearbox / Number of gears</b>	Automatic / 6
----------------------------------	---------------

<b>Type of drive</b>	Front drive
----------------------	-------------

<b>Type of vehicle</b>	SUV
------------------------	-----

<b>Colour / colour code</b>	Quarz Silber Metallic
-----------------------------	-----------------------

<b>Doors / Seats</b>	5 / 5
----------------------	-------

<b>Upholstery type</b>	Cloth / leather combination
------------------------	--------------------------------

<b>Colour of upholstery</b>	Grey-Black
-----------------------------	------------



## Vehicle details

<b>Maintenance booklet / proof</b>	Available / complete	<b>Next maintenance in</b>	4 Monat(e)
<b>Last service on / at</b>	10/2025 at 108,671 km		
<b>Key is / should be</b>	2 / 2	<b>FZG documents</b>	ZB#2 (B) was available (copy), ZB#1 (S) was not available.
		<b>Letter No.</b>	FT977292
<b>Previous damage / Accident</b>	Detectable	<b>Repainting</b>	Detectable
<b>Inspection conditions</b>	sufficient	<b>Lifting equipment / pit</b>	No
<b>Test drive</b>	Not performed	<b>Engine function test</b>	Performed
<b>Manufacturer key number/ type code number</b>	1844 / AKJ 00033		
<b>Emission standard</b>	EURO6;WLTP;AM;PI/CI; M, N1 I	<b>fine dust sticker</b>	
<b>Permitted total weight</b>	1,855 kg	<b>Empty weight</b>	
<b>Dimensions</b>	4212 x 1765 x 1605		

## Tyres

**Mounted tyres**

#	Tyre size	Type of tyre	Manufacturer	Tread depth
1)	195/60 R16 89H	Winter tyres on Light alloy	Hankook	5mm / 5mm
2)	195/60 R16 89H	Winter tyres on Light alloy	Hankook	5mm / 5mm

**Additional tyres**

#	Tyre size	Type of tyre	Manufacturer	Tread depth
1)	195/60 R16 89H	Summer tyres on Light alloy	Bridgestone	6mm / 6mm
2)	195/60 R16 89H	Summer tyres on Light alloy	Bridgestone	6mm / 6mm

**Replacement**

Typ	Tyre size	Type of tyre	Manufacturer	Tread depth
Tirefit		Expiration date 12/2024		

**Legend: Tread depth information for the left tire is listed first, for the right tire it is listed second on the axle in the direction of travel.**

TÜV SÜD Auto Partner GmbH  
Gutenbergstraße 13  
70771 Leinfelden-Echterdingen

Inspection location  
ARS Altmann AG Automobillogistik  
Römerstraße 3  
64560 Riedstadt



## Equipment



## Standard equipment

- Storage compartments (storage compartment in the instrument panel, driver's side; storage compartment in the center console, front and rear; storage compartment in the front doors, suitable for 1.5-liter beverage bottles; storage compartment in the rear doors, suitable for 0.5-liter beverage bottles; 2 cup holders in the center console; glove compartment; bag hooks, side in the luggage compartment)
- Electrically adjustable exterior mirrors for driver and passenger side (housing in body color)
- Hill Start Assist
- On-board computer
- Diesel particulate filter (DPF) maintenance-free (exhaust aftertreatment via SCR (Selective Catalytic Reduction) catalyst with AdBlue (urea injection). Vehicles with BlueInjection technology require refilling of the AdBlue fluid between regular service intervals. A display in the vehicle informs the driver in good time when refilling is necessary.)
- Electric front windows (one-touch function - anti-pinch protection - comfort closing function via remote control of the central locking system)
- rear window wiper
- Interior lighting (front and rear)
- Child safety lock in the rear doors, manual
- Rear headrests 2 (height adjustable)
- Front headrests (height adjustable)
- LED ambient lighting (in the center console and in the front doors)
- LED headlights
- Steering wheel: Leather steering wheel with chrome elements
- Fatigue warning
- Upholstery: Fabric/Premium leather look (pockets on front seat backs)
- Tire repair kit (including tire sealant and 12-volt compressor (without jack))
- Tire pressure warning
- Power steering (speed-dependent)
- Seat belts: Three-point seat belts in all seats (belt force limiter, front and rear outer seats - Double belt tensioners, front seats - Belt tensioners, rear outer seats - Warning tone and light for unfastened seat belts, front and rear seats)
- Seats: Comfort seats (comfort driver's seat, 6-way manually adjustable (length, height, backrest angle) - comfort passenger seat, 4-way manually adjustable (length, backrest angle))
- Lane departure warning (warning in case of unintentional lane departure from 60 km/h via warning tone and indicator light in the driver information display)
- 12V power outlet in the center console
- Traffic sign assistant (recognition of speed limits and their cancellation, as well as display of the recognized sign in the driver information display (depending on visibility and weather conditions))
- Heat-insulating glazing, tinted
- Ignition keys with remote control, two, both foldable
- Adaptive brake light
- Airbag for driver and front passenger side (front passenger airbag can be manually deactivated)
- Airbag: Front and rear outer head airbags
- Airbag: Side airbag for driver and front passenger side (side airbag, front passenger, deactivatable)
- Anti-lock braking system (ABS) (with cornering brake control (CBC) and brake assist)
- Manually folding exterior mirrors
- Welcome light when unlocking the vehicle and ambient lighting
- Roof spoiler
- Tachometer
- Electronic brake force distribution (EBD)
- Electronic Stability Program (ESP Plus)
- Electric rear windows (one-touch function - anti-pinch protection - comfort closing function via remote control of the central locking system)
- Pedestrian protection
- Cruise control with intelligent speed limiter
- Transmission: 6-speed automatic transmission
- Heating and ventilation system with particle and odor filter, including rear footwell heating
- Automatic climate control, two zones (with separate temperature control for driver and front passenger), recirculation mode, manual, automatic air distribution, sun position sensor, activated carbon filter)
- LED taillights
- LED daytime running lights
- Steering column adjustable for height and reach
- Make-up mirror in sun visor, passenger side
- Fog light
- Radio: Radio R 4.0 IntelliLink with 7" touchscreen color display, 6 speakers (Automatic music recognition (title, album, artist, cover) for audio devices with USB connection, Bluetooth audio streaming, hands-free calling via Bluetooth interface, display of phonebook and call lists, up to 5 mobile phones can be paired, display of pictures/films/videos via USB interface, smartphone integration via Apple CarPlay and Android Auto, use of the voice control of the paired Smart, steering wheel remote control)
- Visibility equipment (rain sensor, front; automatic dimming headlights with tunnel detection; interior rearview mirror, automatically dimming; illuminated make-up mirrors in both sun visors; reading lights, rear)
- Seats: Seat backrest split 60:40, foldable
- Start/Stop System (Reinforced starter motor - High-performance battery - "eco" switch to deactivate the start/stop function - Upshift recommendation)
- Traction control (TC Plus)
- Lashing eyes in the luggage compartment
- Pre-installation for child seat restraint system "ISOFIX" (incl. top tether attachment points, rear outer)
- Immobiliser



- Central locking with remote control (and interior switch)

### Extra equipment

- Detachable trailer hitch
- Luggage compartment floor, 2-way height adjustable (flat loading area when rear seats are folded down)
- OpelConnect (with telematics services: - Emergency call/breakdown call - Vehicle status and information - Route and journey information)
- Package: Comfort (Park pilot, front and rear parking aid - Heated seats, driver and front passenger, multi-stage switchable - Heated leather steering wheel - Heated ThermoTec windshield)
- Wheels: Alloy wheels 6.5 J x 16, low rolling resistance tires 195/60 R 16 (4 double spokes in BiColor Titanium)
- Seats: Ergonomic active seat with AGR seal of approval for the driver (length, height and backrest angle manually adjustable - seat tilt electrically adjustable - lumbar support electropneumatically adjustable in height and length - extendable thigh support manually adjustable - Florey fabric/premium leather look, black)
- Armrest, driver
- Paint finish: Metallic
- Navi 5.0 IntelliLink with 8" color touchscreen display (navigation system with integrated memory, dynamic route guidance, steering wheel remote control, voice control, Bluetooth audio streaming, hands-free system via mobile phone-compatible Bluetooth interface. Movies/videos and screen presentations are automatically stopped while driving. Aux-in and USB support for audio & video. Video playback via USB interface. OpelConnect with navigation services. Smartphone integration via Apple CarPlay and Apple iPhones).
- Solar Protect heat-insulating glazing (in the rear, heavily tinted)
- additional set of winter tires 195/60 R16 on 16" alloy wheels

### Brief expert findings

Documents submitted	At the time of the inspection, the vehicle registration certificate Part 2 (title) was available, but the vehicle registration certificate Part 1 (document) was not. (Copy)
VIN comparison	The vehicle identification number (VIN) was read from the vehicle and its conformity with the submitted documents was confirmed by the undersigned during the inspection.
Inspection	The inspection conditions were sufficient for the assessment of the vehicle. No lifting equipment or pit was available for inspecting the vehicle. Therefore, inspection of the vehicle's underside was only possible to a limited extent.
Test drive	No test drive/shunting maneuver was carried out during the inspection of the vehicle.
Engine function test	An engine test run was performed.

### Value reducing factors

No.	Component group	Description
1	Equipment	Tirefit filler - Expired - Replace
2	Wing mirror - right side	Cap - Scratch(es) - Smart repair
3	2nd wheel set	1 alloy rim - Scratch(es) - Loss in value
4	2nd wheel set	1 alloy rim - Scratch(es) - Loss in value
5	Side panel - rear right side	Side panel - dent(s) - Smart repair
6	Door - rear right side	Door - Scratch(es) - Smart repair
7	Body	Body - Glued / labelled - De-glue / neutralise
8	Steering system	Steering wheel sheath (Leder) - Worn - Replace
9	Vehicle glazing	Windscreen - Broken / torn - Replace

### Previous damages

No.	Previous damage	Extent of damage (Net)
1	Rear, Side - left, Provided by user / customer, from 11 Feb 2026	2.816,61 €



## Repainting

### No. Repainting

1 Side panel - rear left side, Professionally carried out, Invoice of repair done Non-existent

## Paint coat thickness measurement

Side panel - rear left side 520 µm |

## Order/Scope of Order

An order was placed to prepare a sales report for the described vehicle. This report includes the following:

- Description of key vehicle information
- Documentation of equipment features  
(*Delivery by third-party service providers*)
- Documentation of damage, defects, missing parts
- Documentation of prior damage, unrepaired prior damage, repainting
- A brief visual or functional inspection of the equipment details, if possible.  
(*Functional testing of driver assistance systems is not included in the scope of services!*)
- a photographic documentation of the vehicle

## Basis for the order

This product is based on the guidelines for vehicle returns and valuations published by Alphabet Fleet GmbH. The expert makes the specific findings in each individual case objectively, within the framework of the prescribed standards, based on their own expertise.

The vehicle inspection takes place in a fully assembled, unassembled state.

Damage or defects that can only be detected during disassembly/diagnostic work or through further investigation remain within the realm of prognostic risk. An increased risk exists due to concealed defects caused by fraudulent misrepresentation and which were not identifiable by the expert.

Damage or defects resulting from normal use or wear and tear of the vehicle will be accepted in accordance with the applicable standard.

There was no explicit identification or monetary consideration of the expected features within the product.

Features which, in their nature and extent, slightly exceed normal use but do not constitute unacceptable damage, will be documented and indicated as signs of wear, if applicable.

Damage or defects that, according to the applicable standard, can no longer be attributed to normal use or wear and tear are listed under "Value Reducing Factors" in the product description.

Depending on the product specification, a monetary ID can be provided. If this takes place, the costs can be 100% d or pro rata depending on the vehicle's age and mileage.

## Previous damages

According to available information previous damages were repaired at the vehicle. Traces of repairs, which allow conclusions about the area of repair, were not recognizable during the inspection.

## Comments

- Die Unterbodenbesichtigung war nur ebenerdig & eingeschränkt möglich. Mehrkosten möglich.



Figure 1: Diagonal front (left)



Figure 2: Diagonal front (right)



Figure 3: Diagonal rear (left)



Figure 4: Diagonal rear (right)



Figure 5: Interior - front



Figure 6: Interior - rear



Figure 7: Instrument cluster



Figure 8: Instrument panel



Figure 9: Interior 360° view



Figure 10: Cargo area

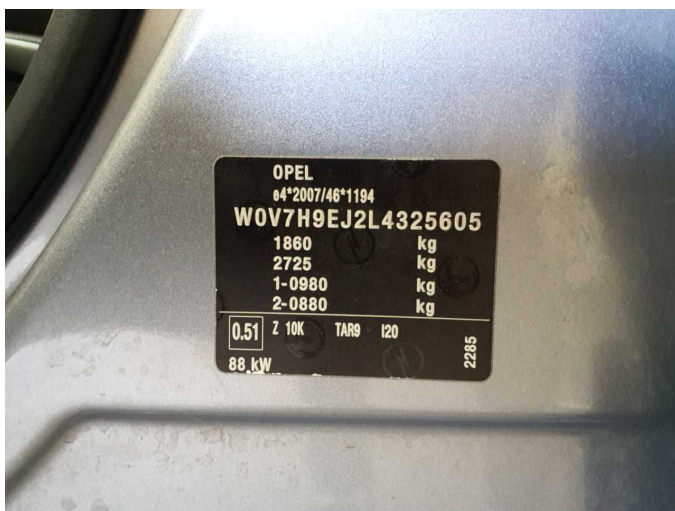


Figure 11: VIN



Figure 12: Mounted tyres





Figure 19: Misc.



Figure 20: Misc.



Figure 21: Misc.



Figure 22: Misc.



Figure 23: Misc.

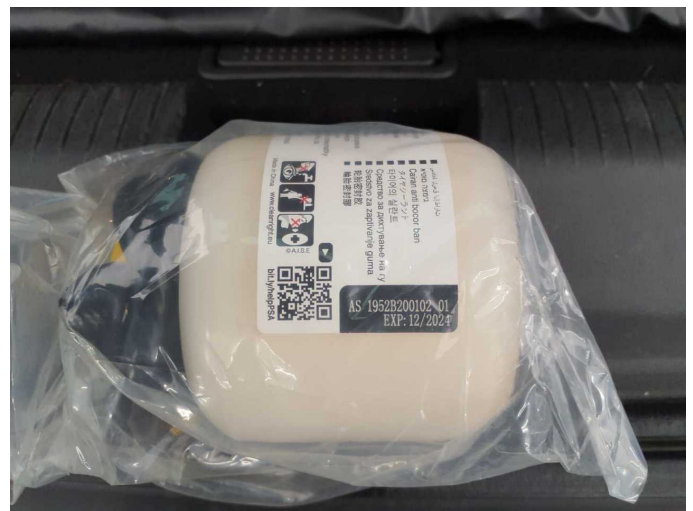


Figure 24: Misc.



Figure 25: Misc.



Damage 1: Equipment: Tirefit filler - Expired - Replace



Damage 2: Wing mirror - right side: Cap - Scratch(es) - Smart repair



Damage 2: Wing mirror - right side: Cap - Scratch(es) - Smart repair



Damage 3: 2nd wheel set: 1 alloy rim - Scratch(es) - Loss in value



Damage 3: 2nd wheel set: 1 alloy rim - Scratch(es) - Loss in value



**Damage 4:** 2nd wheel set: 1 alloy rim - Scratch(es) - Loss in value



**Damage 4:** 2nd wheel set: 1 alloy rim - Scratch(es) - Loss in value



**Damage 5:** Side panel - rear right side: Side panel - dent(s) - Smart repair



**Damage 5:** Side panel - rear right side: Side panel - dent(s) - Smart repair



**Damage 6:** Door - rear right side: Door - Scratch(es) - Smart repair



**Damage 6:** Door - rear right side: Door - Scratch(es) - Smart repair



**Damage 7:** Body: Body - Glued / labelled - De-glude / neutralise



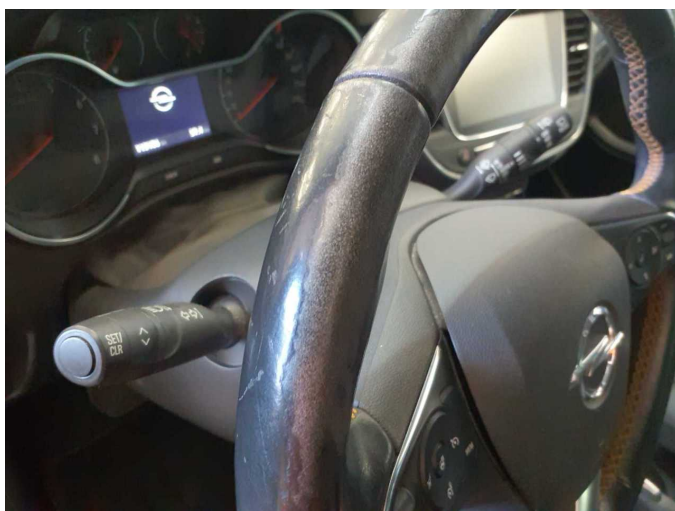
**Damage 7:** Body: Body - Glued / labelled - De-glude / neutralise



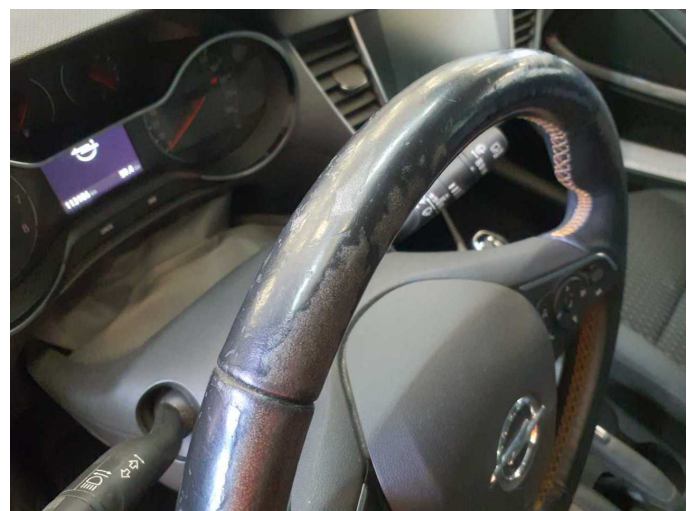
**Damage 7:** Body: Body - Glued / labelled - De-glude / neutralise



**Damage 8:** Steering system: Steering wheel sheath (Leder) - Worn - Replace



**Damage 8:** Steering system: Steering wheel sheath (Leder) - Worn - Replace



**Damage 8:** Steering system: Steering wheel sheath (Leder) - Worn - Replace



**Damage 8:** Steering system: Steering wheel sheath (Leder) - Worn - Replace



**Damage 9:** Vehicle glazing: Windscreen - Broken / torn - Replace



**Damage 9:** Vehicle glazing: Windscreen - Broken / torn - Replace



**Repainting 1:** Side panel - rear left side



**Repainting 1:** Side panel - rear left side