

Expertise

Protocol number: 45949796
Order No. / Reference: 26420398
Inspection date: 15 Jun 2026

Manufacturer: Volvo

Model: XC60 T6 AWD Recharge Plus Dark

VIN: LYVUZH1V7PB325743



Vehicle details

Manufacturer / Type / Model / Equipment

Volvo XC60 T6 AWD Recharge Plus Dark

Vehicle Identification number LYVUZH1V7PB325743

Mileage (Read) 59,185 km

First registration 12 May 2023

Number of holders 1

Power / Engine displacement 186 kw / 1,969 ccm

Fuel type / Cylinder Hybrid P / E ext. charg. / 4

Gearbox / Number of gears Automatic / 8

Type of drive All-wheel drive

Type of vehicle SUV

Colour / colour code Blue Metallic

Doors / Seats 5 / 5

Upholstery type Cloth

Colour of upholstery Light grey

Re-import no



Vehicle details

Maintenance booklet / proof	digital proof / complete	Next maintenance in	321 Tag(e)
Last service on / at	05/2026 at 57,922 km		
Key is / should be	2 / 2	FZG documents	ZB#2 (B) was available (copy), ZB#1 (S) was not available.
		Letter No.	GS764639
Previous damage / Accident	None detectable	Repainting	None detectable
Inspection conditions	sufficient	Lifting equipment / pit	yes
Test drive	Not performed	Engine function test	Performed
Manufacturer key number/ type code number	9101 / BRS 00017		
Emission standard	EURO6;WLTP;AP;PI/CI; M, N1 I	fine dust sticker	
Permitted total weight	2,660 kg	Empty weight	
Dimensions	4708 x - x -		

Tyres

Mounted tyres

#	Tyre size	Type of tyre	Manufacturer	Tread depth
1)	255/45 R20 105V	Summer tyres on Light alloy	Goodyear	7mm / 7mm
2)	255/45 R20 105V	Summer tyres on Light alloy	Goodyear	7mm / 7mm

Additional tyres

#	Tyre size	Type of tyre	Manufacturer	Tread depth
1)	235/60 R18 107H	Winter tyres on Light alloy	Pirelli	6mm / 6mm
2)	235/60 R18 107H	Winter tyres on Light alloy	Pirelli	6mm / 6mm

Replacement

Typ	Tyre size	Type of tyre	Manufacturer	Tread depth
Tirefit		Expiration date 01/2027		

Legend: Tread depth information for the left tire is listed first, for the right tire it is listed second on the axle in the direction of travel.

TÜV SÜD Auto Partner GmbH
Gutenbergstraße 13
70771 Leinfelden-Echterdingen

Inspection location
Hartmann Fleet Professionals GmbH
Industriestraße 11
36272 Niederaula



Equipment



Standard equipment

- ABS - Anti-lock Braking System
- Airbag, driver's knee airbag
- Airbag, side airbags for driver and front passenger and head/shoulder airbags for all occupants
- Ambient lighting (Extended interior lighting with: - Ambient lighting front and rear - Exit lights front and rear - Work light on the tailgate - Illuminated door pockets and door openers front and rear - Rear footwell lighting - Rear reading lights)
- Automatic climate control with separate temperature control for driver and front passenger (and additional air vents for the 2nd row of seats (integrated in the B-pillar))
- Automatic emergency braking (emergency braking mechanism after the deployment of the airbags or seatbelt pretensioners to prevent secondary accidents)
- Automatic tailgate (electric)
- Cargo area roller blind
- Child safety lock for the rear doors (electric)
- Digital Services including Google Maps navigation system (Google Services (includes Google Maps, Google Assistant, Google Play Store and unlimited data) - Volvo On Call (includes, among other things, contacting the Volvo On Call service center at the touch of a button and additional convenience services via the Volvo CarsApp) - Usage is time-limited and will be subject to charges thereafter. Further information on renewal is available from a Volvo dealer partner.)
- Door sill area in car color
- Driver and passenger side airbags with two-stage deployment system
- Electric windows front and rear (with auto-down and auto-up function)
- Electrically adjustable exterior mirrors
- Electronic differential lock
- Emergency brake lights (brake lights flash rapidly during heavy deceleration; hazard warning lights are automatically activated below 10 km/h)
- Glazing: Colored glazing
- High-gloss black applications on the rear of the vehicle
- Hill Start Assist (HSA)
- Illuminated makeup mirror for driver and front passenger
- Immobilizer (deactivation of the high-voltage battery in the event of a collision)
- Interior lighting (headliner, front reading lights, front ambient lighting, front footwell, storage compartment behind center console, glove compartment and luggage compartment)
- Keyless Start (electronic engine start system)
- LED turn signals integrated into the exterior mirrors
- Outdoor temperature display
- Acoustic Vehicle Alerting System (AVAS) (Acoustic pedestrian/cyclist protection through artificially generated driving noises in the speed range up to 20 km/h)
- Active safety belts with belt tensioners
- All-wheel drive (AWD) (depending on the driving mode)
- Aluminum door sill plates with Recharge lettering, front
- Android infotainment system (9" touchscreen (22.9 cm diagonal) - Bluetooth hands-free system incl. audio streaming - Digital vehicle owner's manual - Digital radio reception (DAB+) - 2 USB-C ports (compatible with Apple iPod/iPhone/iPad))
- Central locking with two remote controls and integrated emergency keys (automatic locking of doors while driving (can be deactivated) - comfort opening/closing of side windows and, if applicable, sunroof via remote control - panic function integrated into the remote control)
- Charging box under the cargo floor
- Charging cable Schuko/Type 2 (Mode 2) (7 m length, 1-phase, 10A (for connection to a standard 230-volt household socket))
- CleanZone air quality system with activated carbon filter (automatic recirculation and pre-ventilation of the interior when the vehicle is unlocked)
- Deactivation of the high-voltage battery (in case of a collision)
- Digital instrumentation 2nd generation (Full graphic 12.3" driver display (31.2 cm diagonal) with two variable round instruments and information display (e.g. for navigation map view))
- Electric parking brake
- Electrically folding exterior mirrors
- Electronic Stability Control (ESC)
- Enhanced air quality system with fine dust filtration according to air quality standard PM2.5
- First aid kit and warning triangle
- Fog sensor for automatic activation of the defroster function
- Front center armrest with integrated storage compartment and cup holders
- Front seat belt height adjustment
- Headrests (5) front and rear
- Heated exterior mirrors and rear window (automatic)
- Hill Descent Control (HDC)
- Intelligent driver information system (delays incoming calls or vehicle information in dangerous situations)
- Interior and exterior mirrors automatically dimming
- ISOFIX mounting for the outer rear seats
- Keyless Drive (electronic access system) (with sensor-controlled tailgate, illuminated door handles and floor lights)
- Lashing eyes in the luggage compartment (foldable)
- LED headlights "Thor's Hammer" with high beam assist and integrated LED daytime running lights
- Luggage compartment partition net
- On-board computer (with vehicle control functions)
- Package: Parking Assistance Package (front and rear parking aid with automatic braking intervention (rear) - reversing camera)



- Package: Seat Comfort Package (Electrically adjustable front passenger seat - Electrically adjustable driver's seat with memory function for driver's seat and exterior mirror settings (stored in remote control) - Lumbar support (4-way electrically adjustable) for driver and front passenger seats - Memory function for front passenger seat - Adjustable leg support for driver and front passenger seats)
- Parking ticket holder
- Passenger side airbag can be deactivated
- Power outlet (12-volt connection in the luggage compartment)
- Preparation for Trailer Stability Assist (TSA)
- Rain sensor
- Roof rails in high-gloss black (integrated)
- Safety Assistance (Automatic emergency braking system with detection of vehicles, cyclists, pedestrians and large animals including intersection braking assistant and emergency braking assistant for oncoming traffic - Connected Safety - Driver Alert - Attention warning - Distance warning - Variable speed limiter - Cruise control - Lane Keeping Aid (LKA) - Active lane keeping assistant - Oncoming Lane Mitigation - Ready to Drive notification - Road Edge Detection - Road Sign Information (RSI) - Traffic sign recognition)
- Sport exterior mirrors in high-gloss black
- Sport front and rear apron
- Stainless steel loading sill protector in the luggage compartment
- Start/Stop technology
- Steering wheel adjustable for height and reach
- Steering wheel: Three-spoke steering wheel, leather-free
- Textile floor mats: Sport textile floor mats front and rear
- Third brake light (emergency brake lights (brake lights flash rapidly in case of heavy deceleration; hazard warning lights are automatically activated at speeds below 10 km/h))
- Tire pressure monitoring system (with tire-specific pressure loss warning)
- Wheels: Tire sealant (Incl. 12-volt compressor, maximum speed 80 km/h)

Extra equipment

- Towbar (semi-electric)
- Paint finish: Metallic paint
- Package: Driver Assistance Package (Driver Assistance: - Adaptive Cruise Control - Emergency Stop Assist - Automatic emergency braking system if warnings are ignored - Pilot Assist - Lane Keeping Assist up to speeds of 130 km/h Driver Awareness: - Blind Spot Information System - Blind Spot Assist including Lane Change Warning for rapidly approaching vehicles including steering intervention - Cross Traffic Alert - Cross-traffic alert with braking intervention - Rear Impact Mitigation - Preventive protection in case of an impending rear-end collision)
- Glazing: Side and rear windows tinted (from the B-pillar back)

- Package: Winter Package (front seat heating - rear seat heating - steering wheel heating)
- Panoramic glass sliding sunroof with lifting function (electric) (with integrated, continuously adjustable sunshade)
- Phone: Inductive smartphone charging system (Wirelessly charges smartphones that support the Qi standard on a charging pad)
- Radio accessories: Two USB-C ports on the back of the center console
- Rear parking assist with automatic braking intervention (rear)
- Rear seats in a 40/60 split or completely foldable with pass-through function
- Roof edge spoiler
- Run-off Road Protection (preventive protection system in case of unintentional leaving of the road or impending rollovers and door unlocking)
- Safety braking system with disc brakes all around (internally ventilated) (automatic brake system pre-tensioning, brake assist and automatic hold function)
- Seats: Driver and front passenger seats height adjustable (electrically) (including manual tilt adjustment for the driver's seat)
- Speed-sensitive power steering
- Sport front grille with horizontal struts and grille surround in high-gloss black
- Steering wheel: Multifunction buttons on the steering wheel
- Transmission: 8-speed automatic transmission
- Warning tone/indicator when seat belts are not fastened (for all seats)
- Whiplash Protection System (WHIPS) (including immersion protection on all seats and energy-absorbing front seat cushions)
- Window surround in high-gloss black

- Rubber floor mats
- Charging cable Type 2 / Type 2 (Mode 3)
- Upholstery: Tailored Wool sports seats (including rear center armrest - gearshift lever made of Swedish crystal glass by Orrefors - inlay: Drift Wood - headliner: Anthracite)
- Radio: Audio system High Performance Sound Pro by Harman/Kardon (600 watts of power - 14 speakers - Fresh Air - Subwoofer - Dirac Unison - Sound optimization)
- Wheels: 20" 5-Y-spoke alloy wheels, sport design, diamond cut/high-gloss black (tires 255/45 R20 with rims 8.0 x 20")
- Seats: Child seats (2-stage) integrated into the outer rear seats in conjunction with the winter package



Brief expert findings

Documents submitted	At the time of the inspection, the vehicle registration certificate Part 2 (title) was available, but the vehicle registration certificate Part 1 (document) was not. (Copy)
VIN comparison	The vehicle identification number (VIN) was read from the vehicle and its conformity with the submitted documents was confirmed by the undersigned during the inspection.
Inspection	The inspection conditions were sufficient for the assessment of the vehicle. Lifting equipment and/or a pit were available for examining the vehicle.
Test drive	No test drive/shunting maneuver was carried out during the inspection of the vehicle.
Engine function test	An engine test run was performed.

Value reducing factors

No.	Component group	Description
1	Misc.	Main inspection - No evidence - No deduction
2	Rear bumper	Rear bumper - Scratch(es) - Smart repair

Missing parts

Description

Equipment - charging cable (Mode 2 (mit Schuko-Stecker))

Order/Scope of Order

An order was placed to prepare a sales report for the described vehicle. This report includes the following:

- Description of key vehicle information
- Documentation of equipment features
(*Delivery by third-party service providers*)
- Documentation of damage, defects, missing parts
- Documentation of prior damage, unrepaired prior damage, repainting
- A brief visual or functional inspection of the equipment details, if possible.
(*Functional testing of driver assistance systems is not included in the scope of services!*)
- a photographic documentation of the vehicle

Basis for the order

This product is based on the guidelines for vehicle returns and valuations published by Alphabet Fleet GmbH. The expert makes the specific findings in each individual case objectively, within the framework of the prescribed standards, based on their own expertise.

The vehicle inspection takes place in a fully assembled, unassembled state.

Damage or defects that can only be detected during disassembly/diagnostic work or through further investigation remain within the realm of prognostic risk. An increased risk exists due to concealed defects caused by fraudulent misrepresentation and which were not identifiable by the expert.

Damage or defects resulting from normal use or wear and tear of the vehicle will be accepted in accordance with the applicable standard.

There was no explicit identification or monetary consideration of the expected features within the product.

Features which, in their nature and extent, slightly exceed normal use but do not constitute unacceptable damage, will be documented and indicated as signs of wear, if applicable.

Damage or defects that, according to the applicable standard, can no longer be attributed to normal use or wear and tear are listed under "Value Reducing Factors" in the product description.

Depending on the product specification, a monetary ID can be provided. If this takes place, the costs can be 100% or pro rata depending on the vehicle's age and mileage.



Previous damages

No apparent prior damage that had been repaired could be found on the vehicle.

Comments

- Der Winterradsatz ist kein Bestandteil der Ausstattungsliste.



Figure 1: Diagonal front (left)



Figure 2: Diagonal front (right)



Figure 3: Diagonal rear (left)



Figure 4: Diagonal rear (right)

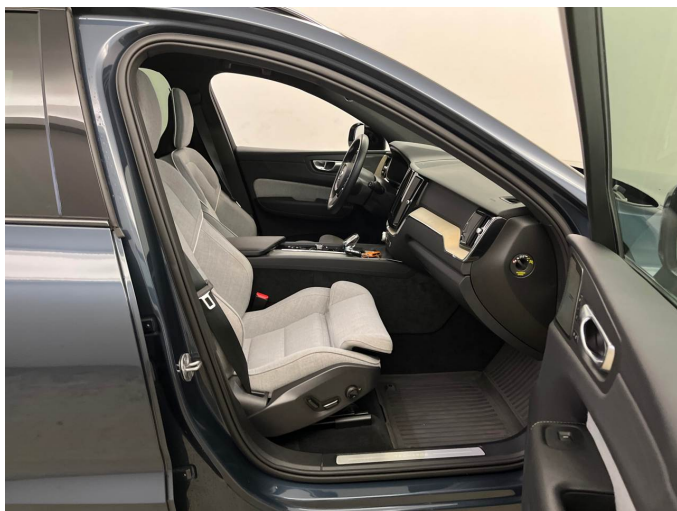


Figure 5: Interior - front



Figure 6: Interior - rear



Figure 7: Instrument cluster



Figure 8: Instrument panel



Figure 9: Interior 360° view



Figure 10: Cargo area

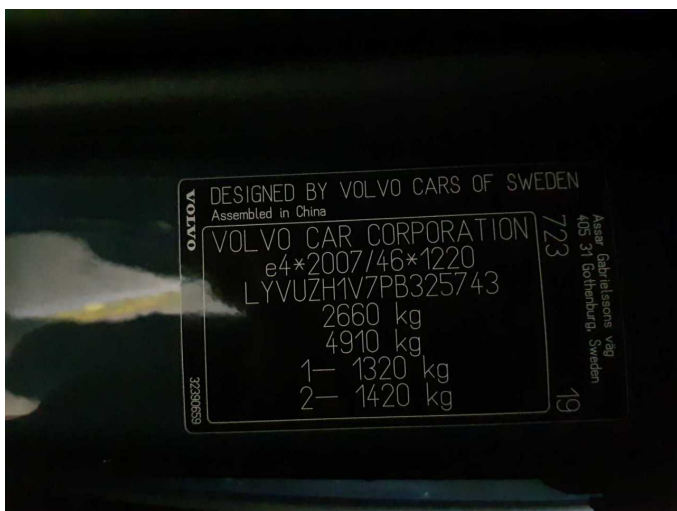


Figure 11: VIN



Figure 12: Mounted tyres



Figure 13: Documents



Figure 14: Additional tyres



Figure 15: Additional tyres

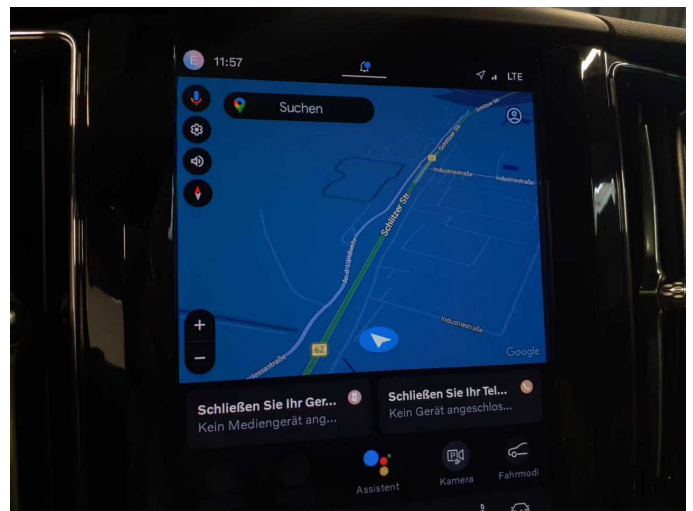


Figure 16: Navigation

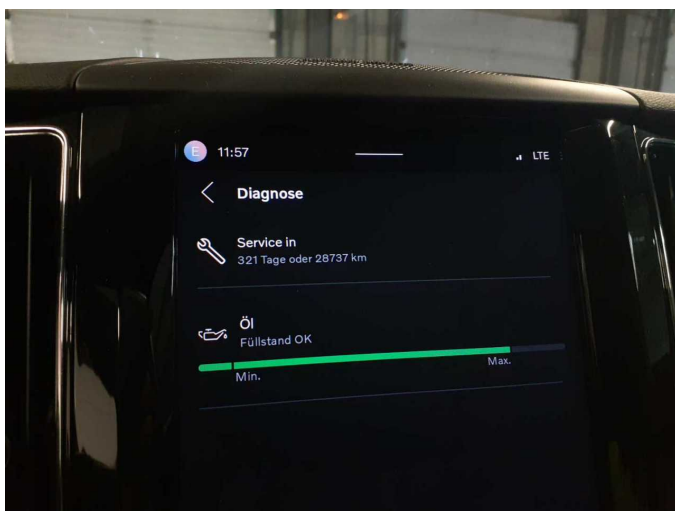


Figure 17: Misc.

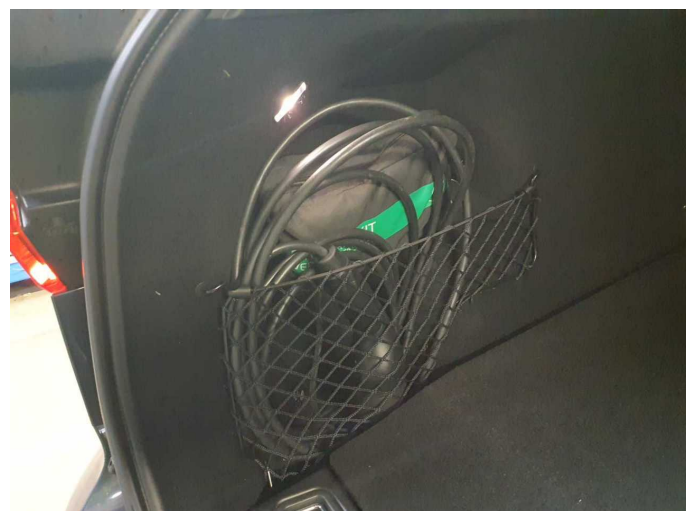


Figure 18: Misc.



Figure 19: Misc.



Figure 20: Misc.



Figure 21: Misc.

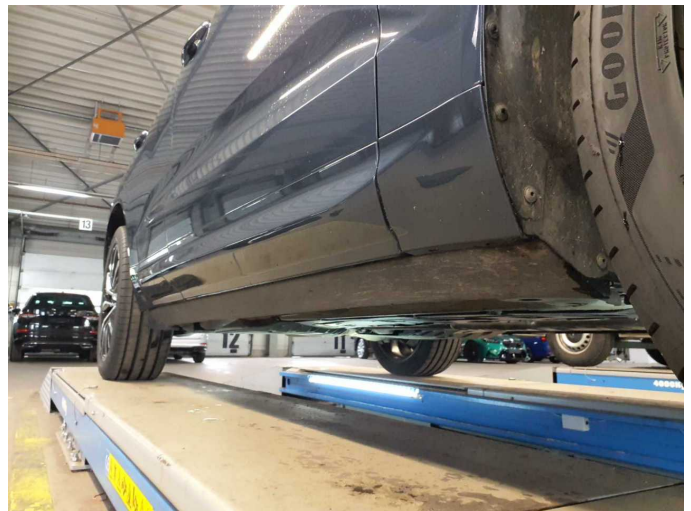


Figure 22: Misc.



Figure 23: Misc.



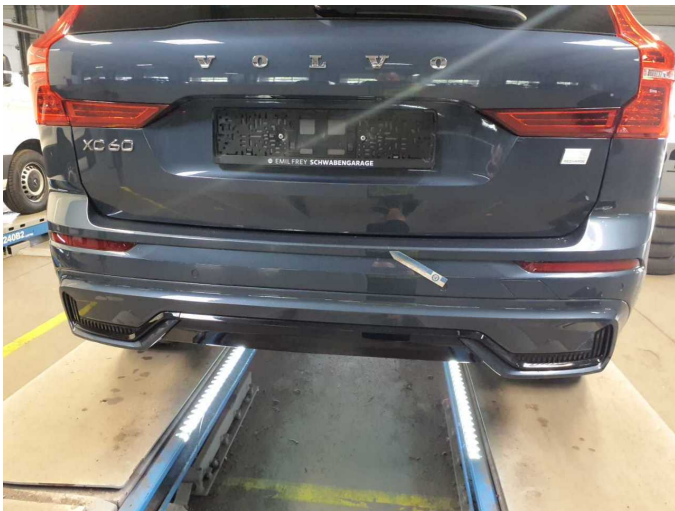
Figure 24: Misc.



Figure 25: Misc.



Figure 26: Misc.



Damage 2: Rear bumper: Rear bumper - Scratch(es) - Smart repair



Damage 2: Rear bumper: Rear bumper - Scratch(es) - Smart repair



Wartungshistorie

(gemäß Auftraggeber Informationen)

Fahrgestellnummer: LYVUZH1V7PB325743

Hersteller / Modell: VOLVO VOLVO XC60 T6 AWD Recharge Plus Dark

Datum	KM-Stand	Beschreibung
07.05.2026	57.922	Luftfiltereinsatz ern; Motoröl b. Wartung; Ölfilter ern; Regelwartungsdienst; Reparatur Sonstiges; Wartung Sonstiges; Zündkerzen ern
09.05.2025	34.492	Bremsflüssigkeit; Bremsflüssigkeit ern; Motoröl b. Wartung; Ölfilter ern; Regelwartungsdienst; Wartung Sonstiges
07.05.2024	16.255	Motoröl b. Wartung; Ölfilter ern; Regelwartungsdienst; Systemtest/ Eigendiagnose; Wartung Sonstiges