

## Expertise

Protocol number: 45506512  
Order No. / Reference: 26319675  
Inspection date: 18 May 2026

Manufacturer: Audi

Model: A4 Avant 40 TFSI S tronic

VIN: WAUZZZF4XMA044015



### Vehicle details

#### Manufacturer / Type / Model / Equipment

Audi A4 Avant 40 TFSI S tronic

**Vehicle Identification number** WAUZZZF4XMA044015

**Mileage (Read)** 96,247 km

**First registration** 1 Mar 2021

**Number of holders** 2

**Power / Engine displacement** 150 kw / 1,984 ccm

**Fuel type / Cylinder** Hybrid Petrol / E / 4

**Gearbox / Number of gears** Automatic / 7

**Type of drive** Front drive

**Type of vehicle** Station wagon

**Colour / colour code** Mythossschwarz

**Doors / Seats** 5 / 5

**Upholstery type** Cloth

**Colour of upholstery** Black-Anthracite



Vehicle details			
<b>Maintenance booklet / proof</b>	digital proof / complete	<b>Next maintenance in</b>	22,600 km
<b>Last service on / at</b>	01/2026 at 93,453 km		
<b>Key is / should be</b>	2 / 2	<b>FZG documents</b>	ZB#2 (B) was available (copy), ZB#1 (S) was not available.
		<b>Letter No.</b>	FX501113
<b>Previous damage / Accident</b>	None detectable	<b>Repainting</b>	None detectable
<b>Inspection conditions</b>	sufficient	<b>Lifting equipment / pit</b>	No
<b>Test drive</b>	Not performed	<b>Engine function test</b>	Performed
<b>Manufacturer key number/ type code number</b>	0588 / BUX 00199		
<b>Emission standard</b>	EURO6;WLTP;AP;PI/CI; M, N1 I	<b>fine dust sticker</b>	
<b>Permitted total weight</b>	2,140 kg	<b>Empty weight</b>	

## Tyres

Mounted tyres				
#	Tyre size	Type of tyre	Manufacturer	Tread depth
1)	225/50 R17 98H	Winter tyres on Light alloy	Pirelli	5mm / 5mm
2)	225/50 R17 98H	Winter tyres on Light alloy	Pirelli	5mm / 5mm
Additional tyres				
#	Tyre size	Type of tyre	Manufacturer	Tread depth
1)	225/50 R17 94H	Summer tyres on Light alloy	Continental	6mm / 6mm
2)	225/50 R17 94H	Summer tyres on Light alloy	Continental	7mm / 7mm
Replacement				
Typ	Tyre size	Type of tyre	Manufacturer	Tread depth
	Tirefit	Expiration date 11/2024		

**Legend: Tread depth information for the left tire is listed first, for the right tire it is listed second on the axle in the direction of travel.**

TÜV SÜD Auto Partner GmbH  
Wiesenring 2  
04159 Leipzig

Inspection location  
Hartmann Fleet Professionals GmbH  
Leerenstraße 25  
29683 Bad Fallingbommel



## Equipment



## Standard equipment

- Airbag for driver and front passenger (with front passenger airbag deactivation)
- Anti-lock braking system (ABS) (with electronic brake force distribution (EBD) and brake assist)
- Audi connect Emergency Call & Service with Audi connect Remote & Control (Audi connect Emergency Call: - Online breakdown call - Audi damage service - Audi service appointment online. The package includes the following services: - Parking position - Vehicle status - Remote locking and unlocking - Remote control of auxiliary heating - Anti-theft alarm notification)
- Exterior mirror housings in body color
- On-board tools (in the luggage compartment)
- third brake light, raised
- Black roof rails (for transport, stable and aerodynamically shaped, in aluminum)
- Tachometer
- Electromechanical parking brake (includes parking brake function when stationary, starting aid by automatic release when starting and full deceleration while driving via all 4 wheels)
- Chassis: Standard chassis (for good driving dynamics with very good ride comfort; shock absorbers and coil springs on front and rear axles)
- Electric windows (front and rear)
- Window channel strips in black (rubber)
- Remote key, without SafeLock (locks and unlocks doors, luggage compartment and fuel filler flap - including Keyless-Go - including comfort closing/opening of windows)
- Transmission: S tronic 7-speed
- rear window wiper
- Top speed limited to 210 km/h
- Interior lighting (front and rear roof module including reading lights - capacitively operated at the front, ambient light on center console, glove box light, passive door warning lights, trunk light on the left, additionally on the right for the A4 Avant/S4 Avant, and tailgate lighting)
- Automatic climate control (single-zone automatic climate control - electronically regulates air temperature, volume and distribution, sun position-dependent control - air distribution can be set using 5 main positions - the 3 LEDs integrated into the seat heating and seat ventilation buttons provide feedback on the selected setting (optional) - buttons for defrosting the front and rear windows - manual recirculation control and particle filter - with key recognition and humidity sensor)
- LED headlights (low beam, high beam, daytime running lights and position lights in LED technology - turn signals in incandescent bulb technology)
- Airbag: Front side airbags and head airbag system
- Accent surfaces in matte black (for dashboard, trim panels in door sills and center console insert)
- Traction control (ASR)
- Audi drive select (For individual vehicle tuning, with more dynamics or more comfort; allows the desired vehicle characteristics to be set in the available modes: - Auto - Comfort - Dynamic - Efficiency - Individual - Offroad (for Allroad quattro))
- Audi pre sense city (can detect vehicles and pedestrians within system limits at speeds up to approximately 85 km/h. If an impending collision is detected, the system warns the driver visually, audibly, and, if necessary, with a braking jolt, and can initiate full deceleration if required to reduce speed or, if necessary, avoid the collision.)
- Decorative inlays diamond lacquer silver grey
- Door sill trims with aluminum inlay at the front
- Electronic Differential Lock (EDS)
- Electronic Stability Control (ESC)
- Driver Information System (with high-resolution 5" monochrome display - display content: speed, time, mileage, outside temperature, fuel warning with remaining range, gear shift indicator, current radio station or music track, radio and media lists, telephone menu (in conjunction with multifunction steering wheel), navigation information (if equipped). On-board computer with short- and long-term memory - including break recommendation)
- Front and rear floor mats (made of velour in black)
- Cruise control system including speed limiter (maintains the desired speed from approximately 20 km/h, provided the engine power or engine braking effect allows it; adjustable speed limiter allows individual limitation of the maximum speed, e.g. within built-up areas)
- Interior mirror dimming
- Child lock
- ISOFIX and Top Tether child seat attachments for the outer rear seats (standard mounting brackets for the convenient attachment of ISOFIX child seats - including an additional attachment point (Top Tether). Recommended child seats are available from your Audi dealer.)
- boot floor mat
- Headrests (5) (height adjustable front and rear)
- Fuel tank with increased filling volume (54 l)
- Manual cargo cover
- LED rear lights (indicator, brake, tail, reversing and rear license plate lights in LED technology. - Brake lights in LED technology enable earlier detection by following traffic due to faster activation)
- Steering column, manually adjustable in height and axis
- Light/rain sensor (for controlling the automatic headlight switching, the coming home/leaving home function and the automatic windshield wiper function)
- front center armrest



- Mild hybrid (enables the integration of hybrid functions into conventional TFSI and TDI engines. A belt-driven starter generator (BSG) and an additional lithium-ion battery enable fuel consumption reduction/CO2 savings through increased recuperation and by switching off the combustion engine while driving below 160 km/h (coasting, only in conjunction with automatic transmissions).)
- Wheel: Low rolling resistance tires, speed-limited (maximum permissible speed 210 km/h)
- Radio accessories: Digital radio reception (DAB) (in addition to the analog station offerings, reception of digitally broadcast radio stations according to the DAB standard. Display of program-related information (e.g., artist and title) as well as additional information in the form of a slideshow (e.g., album art and weather). A second DAB tuner with a second DAB antenna continuously searches for alternative reception frequencies of the selected station. The station list is updated simultaneously.)
- Tire repair kit (compressor and tire sealant, maximum permissible speed 80 km/h)
- Seats: Folding rear seat backrest (split in a 40:20:40 ratio or fully foldable - center armrest - including lashing eyes, 4 in the luggage compartment, for securing luggage and objects - attachment points for the luggage compartment net, with removable partition net; to be attached to the body or to the folded rear seat backrest; helpful whether the rear seat backrest is upright, folded down on one side, or folded down on both sides)
- First aid kit with warning triangle (warning triangle in the trunk - first aid kit in the trunk - 2 high-visibility vests in the door pockets)
- Glazing: Green tinted heat-insulating glazing (for rear window, door and side windows - rear window heated, with timer)
- Central locking "Keyless-Go" without safe locking (keyless engine start)
- Non-smoking version (one 12-volt socket each in the front in front of the cup holders and in the rear for the 2nd row of seats - no cigarette lighter)
- Otto particulate filter
- Wheel: Light alloy wheels, 10-spoke (size 7.5 J x 17 with 225/50 R 17 forged tires)
- Radio: MMI Radio plus (10.1" color display (1,540 × 720) including MMI touch operation - driver information system with 5" mono display - Bluetooth interface (hands-free calling and audio streaming) - Audi music interface with 1 USB-A and 1 USB-C port, each with data and charging function - passive speakers - AM/FM phase diversity - speed-dependent volume adjustment - voice control system with natural language for controlling infotainment and vehicle functions - WLAN hardware)
- Tire pressure monitoring system (visual and audible warning in case of pressure loss in one or more wheels, display in the driver information system)
- Electromechanical power steering (maintenance-free rack and pinion steering with speed-dependent steering assistance; precise steering feel at high speeds, excellent support when parking.)
- Seats: Front seats manually adjustable
- Start-stop system (helps reduce fuel consumption and CO2 emissions by switching off the engine during stationary phases, e.g. at traffic lights. For restarting, the starting process is initiated as soon as the foot brake is released. Can be deactivated at any time via a button.)
- Glazing: Windscreen in acoustic glazing (heat-insulating glazing with improved acoustic insulation value of the windscreen)
- Electronic immobilizer
- Reversible loading floor



## Extra equipment

- Assistance package Tour in conjunction with package Business (adaptive cruise control incl. Stop&Go function - traffic jam assistant - predictive efficiency assistant - Audi pre sense city (standard) - Audi pre sense front - swerve assistant - left turn assistant - camera-based traffic sign recognition - high beam assistant - Audi active lane assist)
- Audi connect Navigation & Infotainment (Online Points of Interest - Online Traffic Information - Hazard Information - Online Traffic Sign Information - Weather Information - Calendar Access - Wi-Fi Hotspot - Online News - Navigation with Google Earth - Online Search for Navigation Destinations - Online Voice Input - Highly Detailed 3D City Display - On-Street Parking - Online Radio - Hybrid Radio - Traffic Light Information - Personal Profiles)
- Business Package (MMI Navigation plus with MMI touch (including driver information system with color display) - Audi phone box - Leather steering wheel in 3-spoke design with multifunction plus - Heated front seats - Automatically dimming, frameless interior mirror - Electrically adjustable, heated and folding exterior mirrors, automatically dimming on both sides - Rear parking aid - High-beam assistant - Manual sunshade for the rear door windows)
- Comfort center armrest in the front (adjustable in tilt and longitudinally movable)
- Driver information system with color display (high-resolution 7" color display - display content: speed, time, mileage, outside temperature, fuel warning with remaining range, gear shift indicator, current radio station or music track, radio and media lists, telephone menu (in conjunction with multifunction steering wheel), navigation information (if equipped). On-board computer with short- and long-term memory - including break recommendation)
- Glazing: Climate comfort/acoustic windshield, wirelessly heated (without obstructing vision – prevents fogging – assists in defrosting the windshield – with heated wiper blade rest – selectable via defrost button in the climate control unit – additional advantage: the infrared-reflecting properties of the windshield reduce the heating of the interior in sunlight. This significantly reduces the energy consumption of the air conditioning system.)
- Hold assist (holds the vehicle indefinitely after stopping on typical road inclines and declines. The system is activated by pressing a button and allows the driver to start off comfortably.)
- Seats: Pneumatically adjustable lumbar support for the front seats with massage function (pneumatic lumbar support using three lordosis bubbles that provide good support in the lumbar region through targeted inflation and deflation - with massage function: This is controlled via the multifunction switch or via MMI - a massage lasts approximately 10 minutes)
- Black fabric headliner
- Deletion of model designation and performance/technology lettering
- Electrically adjustable, heated and folding exterior mirrors, automatically dimming on both sides (including curb view function for passenger-side exterior mirror with integrated LED turn signal, including heated windshield washer nozzles; the curb view function folds the passenger-side mirror down when reverse gear is engaged, giving the driver a better view of the curb edge)
- Front seat heating (heats seat and backrest center panels; with leather upholstery, sport seats and S sport seats also seat side bolsters - individually adjustable in multiple stages for driver and front passenger side via the climate control unit)
- Front sports seats (with manual adjustment of seat height, seat longitudinal position, seat tilt, backrest tilt, headrest and belt height; with pronounced seat side bolsters for better lateral support in curves, extendable thigh support)
- Glazing: Privacy glazing (tinted windows) (rear window, rear door and side windows tinted)
- High-beam assist (within the system's limitations, it automatically detects oncoming headlights, taillights of other road users, and light sources in built-up areas. Depending on the traffic situation, the high beams are automatically switched on or off. The system thus improves the driver's visibility and increases comfort.)
- Paint finish: Metallic
- Parking aid plus (Acoustic and visual parking aid front and rear assists with parking and maneuvering. With selective, visual display of the distance to detected objects in the MMI display, depending on the current steering angle and direction of travel. The virtual lane indicator also provides lateral guide lines that are calculated in advance based on the currently selected steering angle. Measurement is carried out by ultrasonic sensors, discreetly integrated into the bumpers.)
- Radio accessories: Audi sound system (10 speakers including center speaker and subwoofer - 6-channel amplifier - total output of 180 watts)
- Seat covers in fabric system (seat center panels in fabric system black or black-red - seat side bolsters, thigh support, headrests in solid black fabric)
- Steering wheel: Leather steering wheel in a 3-spoke design with multifunction plus (The steering wheel impresses with its high-quality look and aluminum trim and feels good in the hand. Height and reach of the steering wheel are manually adjustable. For convenient operation of the extensive standard and optional infotainment features, the steering wheel is equipped with 12 multifunction buttons. It also includes paddle shifters for manually changing gears with an automatic transmission.)



## Brief expert findings

Documents submitted	At the time of the inspection, the vehicle registration certificate Part 2 (title) was available, but the vehicle registration certificate Part 1 (document) was not. (Copy)
VIN comparison	The vehicle identification number (VIN) was read from the vehicle and its conformity with the submitted documents was confirmed by the undersigned during the inspection.
Inspection	The inspection conditions were sufficient for the assessment of the vehicle. No lifting equipment or pit was available for inspecting the vehicle. Therefore, inspection of the vehicle's underside was only possible to a limited extent.
Test drive	No test drive/shunting maneuver was carried out during the inspection of the vehicle.
Engine function test	An engine test run was performed.

## Value reducing factors

No.	Component group	Description
1	Equipment	Tirefit filler - Expired - Replace
2	Front bumper	Front bumper - Scratch(es) - Smart repair
3	Door - front right side	Door - Scratch(es) - Paint
4	Rear bumper	Rear bumper - Scratch(es) - Paint

## Wear and tear

No.	Component group	Description
1	2nd wheel set	1 alloy rim - Scratch(es) - No deduction

The vehicle shows signs of wear and tear commensurate with its age and use.

## Order/Scope of Order

An order was placed to prepare a sales report for the described vehicle. This report includes the following:

- Description of key vehicle information
- Documentation of equipment features  
(*Delivery by third-party service providers*)
- Documentation of damage, defects, missing parts
- Documentation of prior damage, unrepaired prior damage, repainting
- A brief visual or functional inspection of the equipment details, if possible.  
(*Functional testing of driver assistance systems is not included in the scope of services!*)
- a photographic documentation of the vehicle



## Basis for the order

This product is based on the guidelines for vehicle returns and valuations published by Alphabet Fleet GmbH. The expert makes the specific findings in each individual case objectively, within the framework of the prescribed standards, based on their own expertise.

The vehicle inspection takes place in a fully assembled, unassembled state.

Damage or defects that can only be detected during disassembly/diagnostic work or through further investigation remain within the realm of prognostic risk. An increased risk exists due to concealed defects caused by fraudulent misrepresentation and which were not identifiable by the expert.

Damage or defects resulting from normal use or wear and tear of the vehicle will be accepted in accordance with the applicable standard.

There was no explicit identification or monetary consideration of the expected features within the product.

Features which, in their nature and extent, slightly exceed normal use but do not constitute unacceptable damage, will be documented and indicated as signs of wear, if applicable.

Damage or defects that, according to the applicable standard, can no longer be attributed to normal use or wear and tear are listed under "Value Reducing Factors" in the product description.

Depending on the product specification, a monetary ID can be provided. If this takes place, the costs can be 100% d or pro rata depending on the vehicle's age and mileage.

## Previous damages

No apparent prior damage that had been repaired could be found on the vehicle.

## Comments

-Der montierte Winterradsatz ist kein Bestandteil des Auslieferungsumfangs.



Figure 1: Diagonal front (left)



Figure 2: Diagonal front (right)



Figure 3: Diagonal rear (left)



Figure 4: Diagonal rear (right)



Figure 5: Interior - front



Figure 6: Interior - rear



Figure 7: Instrument cluster



Figure 8: Instrument panel



Figure 9: Interior 360° view



Figure 10: Cargo area



Figure 11: VIN



Figure 12: Mounted tyres



Figure 13: Documents



Figure 14: Documents



Figure 15: Documents



Figure 16: Additional tyres

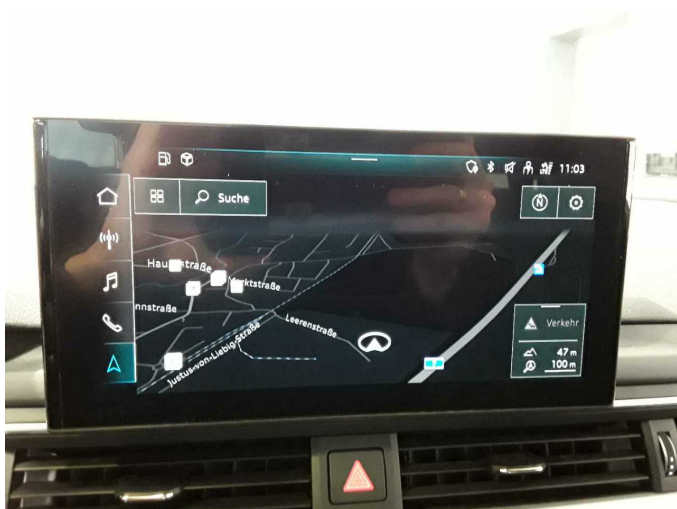


Figure 17: Navigation

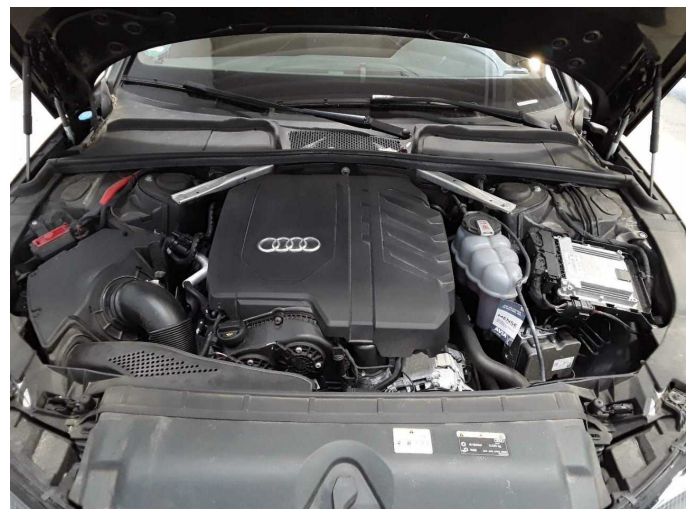


Figure 18: Misc.



Figure 19: Misc.



Figure 20: Misc.



Figure 21: Misc.



Figure 22: Misc.



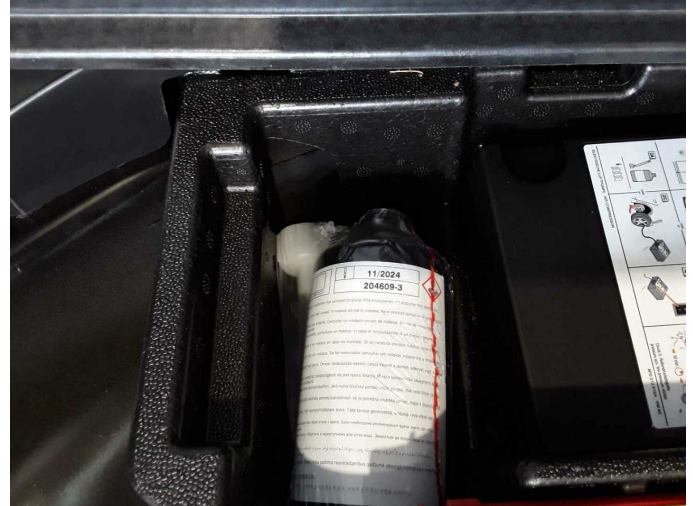
Figure 23: Misc.



Figure 24: Misc.



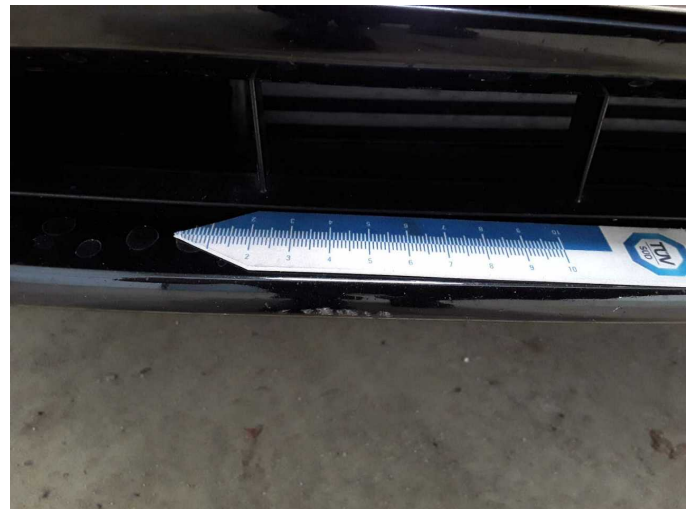
Figure 25: Misc.



Damage 1: Equipment: Tirefit filler - Expired - Replace



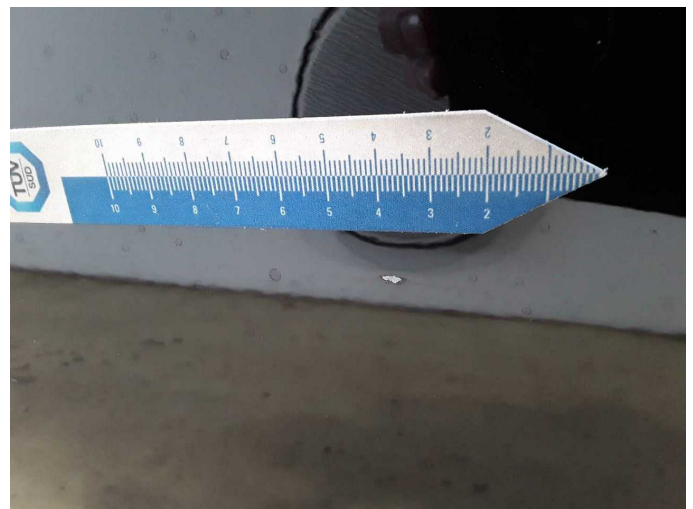
Damage 2: Front bumper: Front bumper - Scratch(es) - Smart repair



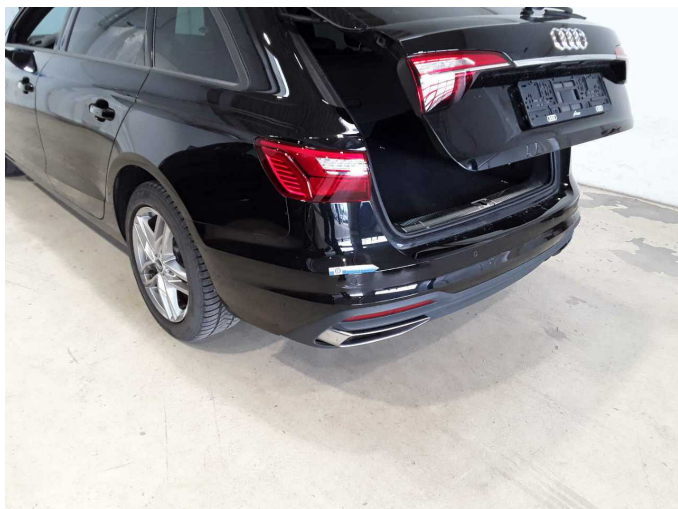
Damage 2: Front bumper: Front bumper - Scratch(es) - Smart repair



Damage 3: Door - front right side: Door - Scratch(es) - Paint



Damage 3: Door - front right side: Door - Scratch(es) - Paint



**Damage 4:** Rear bumper: Rear bumper - Scratch(es) - Paint



**Damage 4:** Rear bumper: Rear bumper - Scratch(es) - Paint



# Wartungshistorie

(gemäß Auftraggeber Informationen)

Fahrgestellnummer: WAUZZZF4XMA044015  
Hersteller / Modell: AUDI AUDIbA4 Avant 40 TFSI S tronic

Datum	KM-Stand	Beschreibung
21.01.2026	93.453	AU; Bremsflüssigkeit; Bremsflüssigkeit ern
20.10.2025	88.786	Bremsbelagfühler ern; Bremse Sonstiges; Bremsklötze hinten; Bremsklötze vorne; Bremsscheiben + Klötze h; Bremsscheiben + Klötze v; Bremsscheiben hinten; Bremsscheiben vorne; Keilrippenriemen; Luftfiltereinsatz ern; Motoröl b. Wartung; Ölfilter ern; Regelwartungsdienst; Reparatur Sonstiges; Wartung Sonstiges
21.02.2024	58.868	AU; Bremsflüssigkeit; Bremsflüssigkeit ern; Getriebeöl ern/prüfen; Motoröl b. Wartung; Ölfilter ern; Regelwartungsdienst; Wartung Sonstiges; Zündkerzen ern
01.09.2023	47.819	Systemtest/Eigendiagnose
12.05.2022	29.016	Bremsbelagfühler ern; Bremse Sonstiges; Bremsklötze hinten; Bremsklötze vorne; Motoröl b. Wartung; Ölfilter ern; Regelwartungsdienst; Reparatur Sonstiges; Systemtest/Eigendiagnose; Wartung Sonstiges