

Expertise

Protocol number: 44804557
Order No. / Reference: 25619476
Inspection date: 2 Apr 2026

Manufacturer: Ford

Model: Focus Turnier 1.5 EcoBlue Start-Stopp-System Aut.
COOL&CONNECT

VIN: WF0PXXGCHPNB00467



Vehicle details

Manufacturer / Type / Model / Equipment

Ford Focus Turnier 1.5 EcoBlue Start-Stopp-System Aut.
COOL&CONNECT

Vehicle Identification number	WF0PXXGCHPNB00467
Mileage (Read)	102,412 km
First registration	10 Nov 2022
Number of holders	1
Next periodical technical inspection	12/2027

(Report on hand)

Power / Engine displacement	88 kw / 1,499 ccm
------------------------------------	-------------------

Fuel type / Cylinder	Diesel / 4
-----------------------------	------------

Gearbox / Number of gears	Automatic / 8
----------------------------------	---------------

Type of drive	Front drive
----------------------	-------------

Type of vehicle	Station wagon
------------------------	---------------

Colour / colour code	Polar-Silber-Metallic
-----------------------------	-----------------------

Doors / Seats	5 / 5
----------------------	-------

Upholstery type	Cloth
------------------------	-------

Colour of upholstery	Black-Anthracite
-----------------------------	------------------

readiness to drive	Roadworthy
---------------------------	------------



Equipment

Standard equipment

- Airbag: Passenger airbag deactivation
- Exterior mirrors in body color, driver and passenger side, electrically adjustable and heated
- Tires: 6.5 J x 16 design wheels (4) with 205/60 R16 tires
- Hill start assist
- Roof rails, black
- Diesel particulate filter (DPF)
- Electronic Shifter
- Driver information system with on-board computer, color (10.7 cm screen diagonal)
- Electronic parking brake
- Luggage compartment cover
- Speed limiter
- Transmission: 8-speed automatic transmission
- Back window, heater
- Interior lighting with LED technology
- Isofix bracket
- Headrests: 2 front and 3 rear, height adjustable
- Leather gear knob
- Adjustable steering column
- Center console "Premium" front
- Front and rear parking pilot system
- Post-Collision Assist
- Radio: Ford SYNC 3 Light with AppLink, 8" touchscreen and DAB/DAB+
- Headlight assistant with day/night sensor
- Seats: Passenger seat height adjustable, manual
- Seats: Map grid on driver and passenger seat backrests
- Seats: Front sports seats with enhanced lateral support
- 12-volt power outlet in the luggage compartment
- Lashing eyes in the luggage compartment
- Electronic immobilizer
- Central locking with remote control and remote luggage compartment release
- Anti-lock braking system (ABS) with electronic brake force distribution (EBD)
- Attachment points behind the second row of seats for mounting the safety partition net
- Fabric headliner
- Roof spoiler painted in car color
- Tachometer
- Electronic Safety and Stability Program (ESP)
- Lane keeping assist including lane keeping assist
- Electric windows front and rear
- FordPass Connect including eCall, Live Traffic Information (only with navigation) and Wi-Fi hotspot
- Cruise control
- Illuminated glove compartment
- Rear window wiper
- Intelligent security system
- Air conditioning, manual
- LED headlights
- Steering wheel: 3-spoke design
- Make-up mirrors in driver and passenger sun visors
- MyKey key system (individually programmable second key)
- Upholstery: Cloth
- Pre-Collision Assist
- Tire repair kit
- Tire Pressure Monitoring System (TPMS)
- Power steering electro-mechanical speed-dependent
- Seats: Driver's seat height adjustable
- Seats: Rear seat backrest
- Start-stop system
- Carpet floor mats front
- Warning system for unfastened seat belts for the 1st and 2nd rows of seats

Extra equipment

- Swiveling towbar (incl. ESP trailer stabilization)
- Navigation: Ford SYNC 3 with AppLink, 8" touchscreen and DAB/DAB+
- Package: Comfort (Air conditioning with automatic temperature control, separately adjustable for driver and front passenger side (2-zone automatic climate control) - Ford Key Free System (keyless locking/unlocking) including Ford Power Start function (keyless start) - Windscreen wipers with rain sensor, variable sensitivity adjustment - Interior mirror, automatically dimming - Exterior mirrors electrically folding and with ambient lighting)
- Rear decal including installation
- Package: Easy Parking (Active Parking Assist with parking and exiting function (in conjunction with 8-speed automatic transmission including semi-automated vehicle guidance) - Door edge protection - Rearview camera with "Split View" technology)
- Package: Winter (heated windscreen - heated steering wheel - individually and variably heated front seats)
- Polar silver metallic
- Side windows from the 2nd row of seats and rear window, dark tinted.
- Safety partition net for luggage compartment



Brief expert findings

Documents submitted	At the time of the inspection, the vehicle registration certificate Part 2 (title) was available, but the vehicle registration certificate Part 1 (document) was not. (Copy)
VIN comparison	The vehicle identification number (VIN) was read from the vehicle and its conformity with the submitted documents was confirmed by the undersigned during the inspection.
Inspection	The inspection conditions were sufficient for the assessment of the vehicle. Lifting equipment and/or a pit were available for examining the vehicle.
Test drive	No test drive/shunting maneuver was carried out during the inspection of the vehicle.
Engine function test	An engine test run was performed.
readiness to drive	The vehicle was roadworthy at the time of inspection.

Value reducing factors

No.	Component group	Description
1	Side panel - rear right side	Elbow (3) - dent(s) - Smart repair
2	Rear bumper	Spoiler (Loch für anhängerkuppl. fehlt) - does not comply with manufacturer's specifications - Replace
3	Front bumper	Front bumper (Sandstrahleffekt) - Scratch(es) - Paint
4	2nd wheel set	2nd wheel set (Originaldesignfelgen+Reifen fehlen) - Differs from the original configuration - repair according to calculation

Wear and tear

No.	Component group	Description
1	Wheel / tyres	Tyres - complete set - Does not meet the leasing specifications - No deduction
2	Boot lid / rear door	Boot lid (1) - dent(s) - No deduction

The vehicle shows signs of wear and tear commensurate with its age and use.

Missing parts

Description

Engine - Engine cover (+Maderbiss)

Documents - Log book (Inkl. Serviceheft)

Previous damages

No.	Previous damage	Extent of damage (Net)
1	Front, Provided by user / customer, from 8 Mar 2023	832,81 €
2	Rear, Provided by user / customer, from 5 Jan 2024	3.732,45 €

Repainting

No. Repainting

1	Boot lid / rear door, Professionally carried out, Invoice of repair done Non-existent
---	---



Order/Scope of Order

An order was placed to prepare a sales report for the described vehicle. This report includes the following:

- Description of key vehicle information
- Documentation of equipment features
(Delivery by third-party service providers)
- Documentation of damage, defects, missing parts
- Documentation of prior damage, unrepaired prior damage, repainting
- A brief visual or functional inspection of the equipment details, if possible.
(Functional testing of driver assistance systems is not included in the scope of services!)
- a photographic documentation of the vehicle

Basis for the order

This product is based on the guidelines for vehicle returns and valuations published by Alphabet Fleet GmbH. The expert makes the specific findings in each individual case objectively, within the framework of the prescribed standards, based on their own expertise.

The vehicle inspection takes place in a fully assembled, unassembled state.

Damage or defects that can only be detected during disassembly/diagnostic work or through further investigation remain within the realm of prognostic risk. An increased risk exists due to concealed defects caused by fraudulent misrepresentation and which were not identifiable by the expert.

Damage or defects resulting from normal use or wear and tear of the vehicle will be accepted in accordance with the applicable standard.

There was no explicit identification or monetary consideration of the expected features within the product.

Features which, in their nature and extent, slightly exceed normal use but do not constitute unacceptable damage, will be documented and indicated as signs of wear, if applicable.

Damage or defects that, according to the applicable standard, can no longer be attributed to normal use or wear and tear are listed under "Value Reducing Factors" in the product description.

Depending on the product specification, a monetary ID can be provided. If this takes place, the costs can be 100% d or pro rata depending on the vehicle's age and mileage.

Previous damages

According to available information previous damages were repaired at the vehicle. Traces of repairs, which allow conclusions about the area of repair, were not recognizable during the inspection.



Figure 1: Diagonal front (left)



Figure 2: Diagonal front (right)



Figure 3: Diagonal rear (left)



Figure 4: Diagonal rear (right)

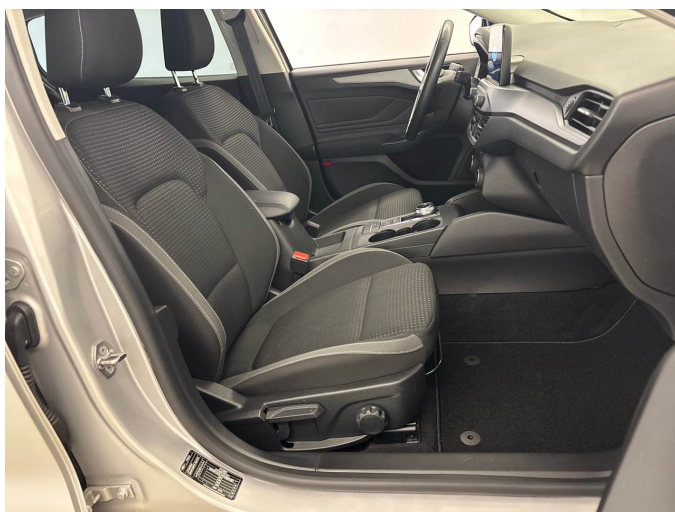


Figure 5: Interior - front



Figure 6: Interior - rear



Figure 7: Instrument cluster



Figure 8: Instrument panel



Figure 9: Interior 360° view



Figure 10: Cargo area



Figure 11: VIN



Figure 12: Mounted tyres



Figure 13: Documents

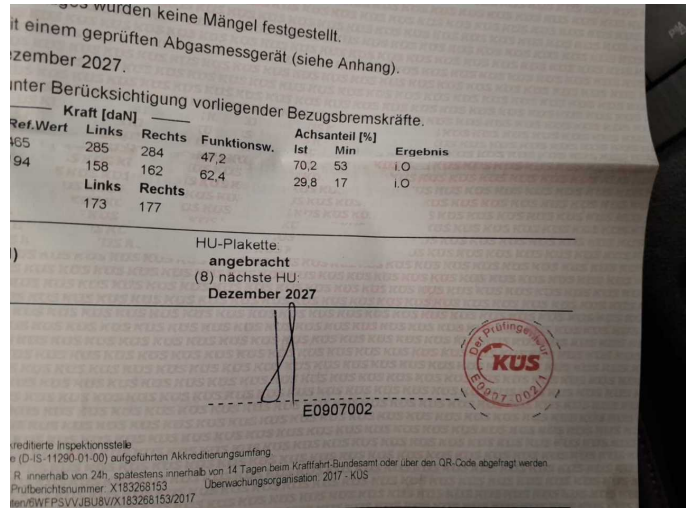


Figure 14: Documents

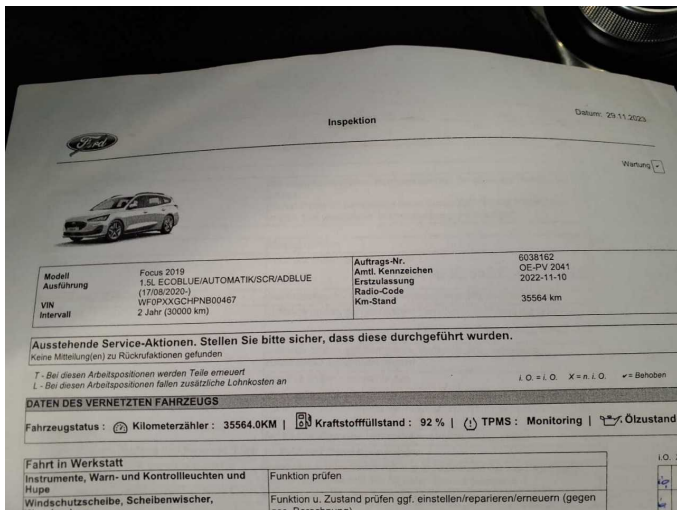


Figure 15: Documents

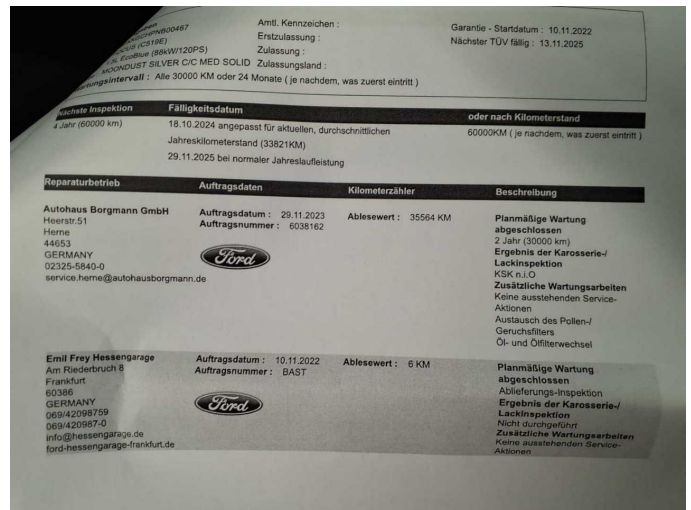


Figure 16: Documents

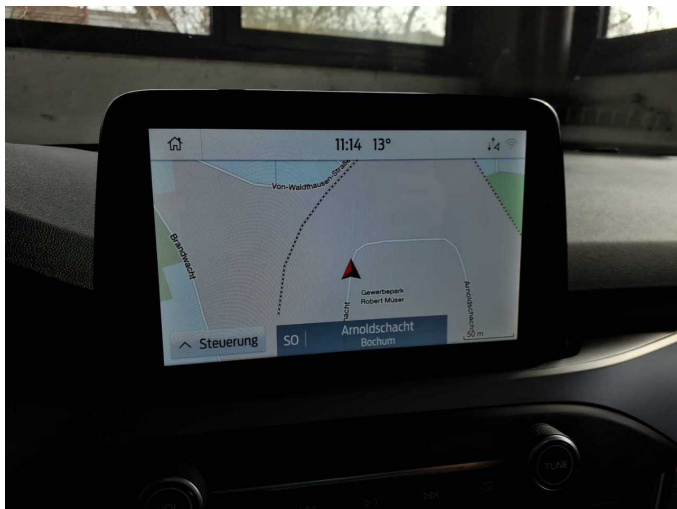


Figure 17: Navigation



Figure 18: Misc.



Figure 19: Misc.

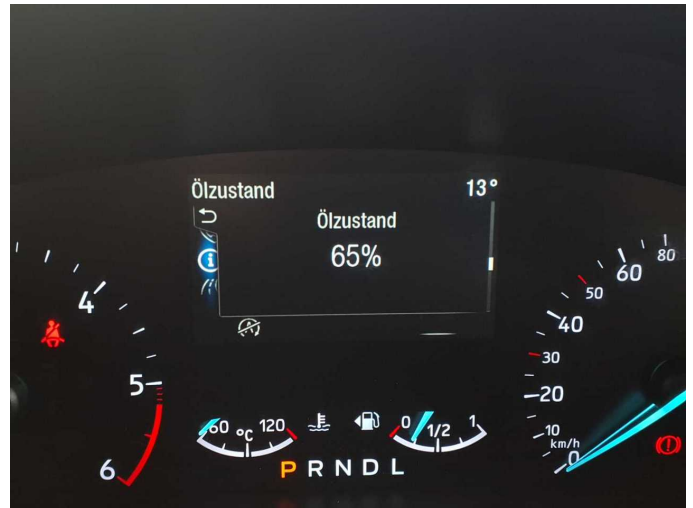


Figure 20: Misc.



Figure 21: Misc.



Figure 22: Misc.



Figure 23: Misc.



Figure 24: Misc.

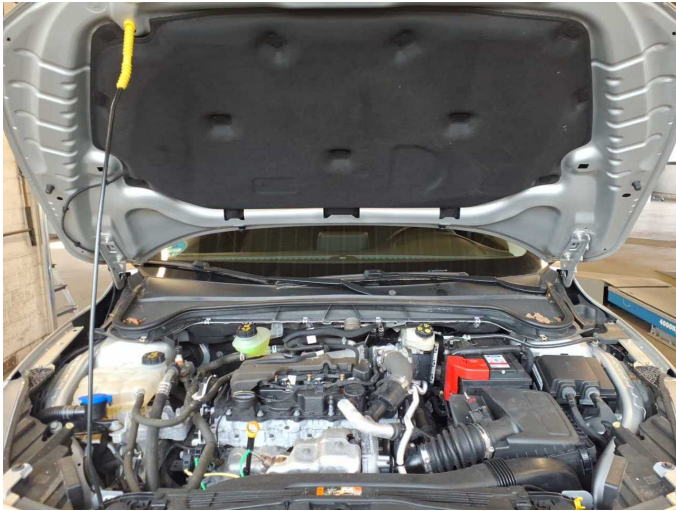


Figure 25: Misc.



Figure 26: Misc.



Figure 27: Misc.



Figure 28: Misc.



Damage 1: Side panel - rear right side: Elbow (3) - dent(s) - Smart repair



Damage 1: Side panel - rear right side: Elbow (3) - dent(s) - Smart repair



Damage 1: Side panel - rear right side: Elbow (3) - dent(s) - Smart repair



Damage 2: Rear bumper: Spoiler (Loch für anhängerkuppl. fehlt) - does not comply with manufacturer's specifications - Replace



Damage 2: Rear bumper: Spoiler (Loch für anhängerkuppl. fehlt) - does not comply with manufacturer's specifications - Replace



Damage 2: Rear bumper: Spoiler (Loch für anhängerkuppl. fehlt) - does not comply with manufacturer's specifications - Replace



Damage 3: Front bumper: Front bumper (Sandstrahleffekt) - Scratch(es) - Paint



Damage 3: Front bumper: Front bumper (Sandstrahleffekt) - Scratch(es) - Paint



Damage 3: Front bumper: Front bumper (Sandstrahleffekt) - Scratch(es)
- Paint



Damage 3: Front bumper: Front bumper (Sandstrahleffekt) - Scratch(es)
- Paint



Damage 3: Front bumper: Front bumper (Sandstrahleffekt) - Scratch(es)
- Paint



Damage 3: Front bumper: Front bumper (Sandstrahleffekt) - Scratch(es)
- Paint



Damage 3: Front bumper: Front bumper (Sandstrahleffekt) - Scratch(es)
- Paint



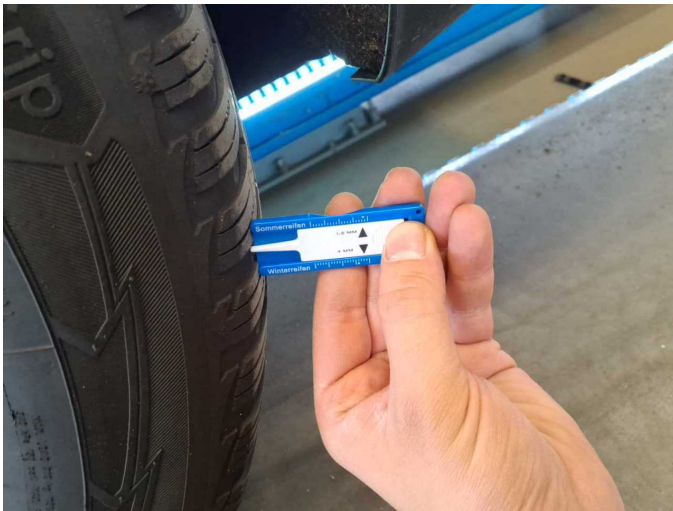
Wear and tear 1: Wheel / tyres: Tyres - complete set - Does not meet the
leasing specifications - No deduction



Wear and tear 1: Wheel / tyres: Tyres - complete set - Does not meet the leasing specifications - No deduction



Wear and tear 1: Wheel / tyres: Tyres - complete set - Does not meet the leasing specifications - No deduction



Wear and tear 1: Wheel / tyres: Tyres - complete set - Does not meet the leasing specifications - No deduction



Wear and tear 2: Boot lid / rear door: Boot lid (1) - dent(s) - No deduction



Wear and tear 2: Boot lid / rear door: Boot lid (1) - dent(s) - No deduction



Missing part 1: Engine: Engine cover (+Maderbiss) - Missing - Replace



Missing part 1: Engine: Engine cover (+Maderbiss) - Missing - Replace



Missing part 1: Engine: Engine cover (+Maderbiss) - Missing - Replace



Repainting 1: Boot lid / rear door



Repainting 1: Boot lid / rear door



Wartungshistorie

(gemäß Auftraggeber Informationen)

Fahrgestellnummer: WF0PXXGCHPNB00467
Hersteller / Modell: FORD Ford Focus Turnier 1.5 EcoBlue Start-Stopp-System Aut.
COOL&CONNECT

Datum	KM-Stand	Beschreibung
21.07.2025	97.105	Bremsflüssigkeit; Bremsflüssigkeit ern; Bremsklötze hinten; Motoröl b. Wartung; Ölfilter ern; Regelwartungsdienst; Wartung Sonstiges
29.07.2024	57.864	Bremsscheiben + Klötze h; Bremsscheiben + Klötze v; Kraftstofffilter ern; Luftfiltereinsatz ern; Motoröl b. Wartung; Regelwartungsdienst
29.11.2023	35.564	Motoröl b. Wartung; Ölfilter ern; Regelwartungsdienst; Wartung Sonstiges