

2-FEL-344

2-FEL-344 · 116iA Business Edition · 16 April 2026 · Zaventem (BE)

Specifications

License Plate Number	2-FEL-344	Fuel Type	Gasoline
Manufacturer	BMW	VIN	WBA7K110X07P41418
Model	1-serie	Cylinder Capacity	1.499 ^{cm3}
Model Versions	116iA Business Edition	Transmission Type	Automatisch geschakelde Transmissie
Body Type	5 door hatchback	First Admission	11-04-2024
Color	Grey	Odometer	68.035 ^{km}
Paint Type	Metallic	Numer Of Keys	2
Production Year	2024	Interior	Grey
KW	80	Number Headrests	5

Images





Accessories

ABS

Airbags

Alloy wheels

Audio System

Automatic air conditioning

Bluetooth car kit

Central door locking

Centre armrest

Cruise control

Electric rear windows

Electric windows front

Electrically adjustable exterior mirrors

Front & rear parking sensors

Leather steering wheel

Navigation system

Roller cover / parcel shelf

Steering wheel multifunction

Condition

Condition exterior Adequate

Condition interior Adequate

Last Maintenance Unknown

Previous Repairs Unknown

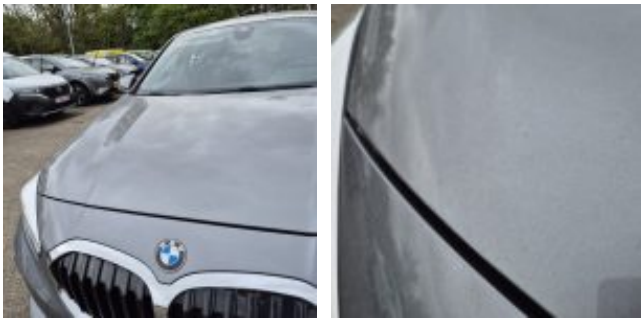
Tire Specifications

Tire	Profile	Brand	Width	Aspect Ratio	Radial	Type
Front Left	5 ^{mm}	Michelin	205 ^{mm}	55 ^{mm}	16 ^{inch}	Summer
Rear Left	7 ^{mm}	Falken	205 ^{mm}	55 ^{mm}	16 ^{inch}	Summer
Front Right	5 ^{mm}	Michelin	205 ^{mm}	55 ^{mm}	16 ^{inch}	Summer
Rear Right	7 ^{mm}	Falken	205 ^{mm}	55 ^{mm}	16 ^{inch}	Summer
Spare Tire Type		None				

Damages



Damage Part	Damage Type	Notes	Repair Type	Acceptable
Other	Burned	Deurstijl	Cloth Repair	No



Damage Part	Damage Type	Repair Type	Acceptable
Hood	Stonechipping	Acceptable	Yes



Damage Part	Damage Type	Repair Type	Acceptable
Bumper - Front	Scratch(es)	Spray	No



Damage Part
Mirror - Rightside

Damage Type
Scratch(es)

Repair Type
Spray

Acceptable
No



Damage Part
Frontdoor - Right

Damage Type
Small scratch(es)

Repair Type
Polish

Acceptable
No



Damage Part
Skirt - Right

Damage Type
Scratch(es)

Repair Type
Spray

Acceptable
No



Damage Part	Damage Type	Repair Type	Acceptable
Alloy - Right Rear	Damaged	Rim repair	No



Damage Part	Damage Type	Repair Type	Acceptable
Bumper - Rear	Scratch(es)	Spray	No



Damage Part	Damage Type	Repair Type	Acceptable
Emblems	Missing	Replace	No



Damage Part	Damage Type	Repair Type	Acceptable
Interior	Stains & dirt	Cleaning	No