

Expertise

Protocol number: 46230273
Order No. / Reference: 26584305
Inspection date: 30 Jun 2026

Manufacturer: Toyota

Model: Aygo X S-CVT Play

VIN: JTDAGNAC600111903



Vehicle details

Manufacturer / Type / Model / Equipment

Toyota Aygo X S-CVT Play

Vehicle Identification number JTDAGNAC600111903

Mileage (Read) 74,926 km

First registration 24 May 2023

Number of holders 1

Power / Engine displacement 53 kw / 998 ccm

Fuel type / Cylinder Petrol / 3

Gearbox / Number of gears Automatic / 1

Type of drive Front drive

Type of vehicle Saloon car

Colour / colour code Schneeweiß

Doors / Seats 5 / 4

Upholstery type Cloth

Colour of upholstery Black



Vehicle details

Maintenance booklet / proof	digital proof / complete	Next maintenance in	5,568 km
Last service on / at	09/2025 at 65,327 km		
Key is / should be	1 / 2	FZG documents	ZB#2 (B) was available (copy), ZB#1 (S) was not available.
		Letter No.	GR730621
Previous damage / Accident	None detectable	Repainting	None detectable
Inspection conditions	sufficient	Lifting equipment / pit	yes
Test drive	Not performed	Engine function test	Performed
Manufacturer key number/ type code number	7104 / AAL 00018		
Emission standard	EURO6;WLTP;AP;PI/CI; M, N1 I	fine dust sticker	
Permitted total weight	1,360 kg	Empty weight	

Tyres

Mounted tyres

#	Tyre size	Type of tyre	Manufacturer	Tread depth
1)	175/65 R17 87H	All-season tyres on Steel rim with wheel cover	Continental	4mm / 4mm
2)	175/65 R17 87H	All-season tyres on Steel rim with wheel cover	Continental	5mm / 5mm

Replacement

Typ	Tyre size	Type of tyre	Manufacturer	Tread depth
Tirefit		Expiration date 03/2029		

Legend: Tread depth information for the left tire is listed first, for the right tire it is listed second on the axle in the direction of travel.



Equipment

Standard equipment

- Automatic low beam
- Anti-lock braking system (ABS) (with electronic brake force distribution (EBD))
- Dynamic brake light
- eCall emergency call system
- electric front windows
- Follow-me-home function
- luggage compartment cover
- Adaptive cruise control (ACC)
- Cup holders, front and rear
- Front and rear seatbelt warning system, visual and audible
- rear window wiper
- ISOFIX child seat attachment
- Headrests (4)
- LED daytime running lights
- Steering wheel integrated controls (steering wheel integrated controls for adaptive cruise control, audio system, multi-information screen, Bluetooth hands-free system, voice control, lane keeping assist)
- Radio accessories: 4 speakers
- Tire Pressure Monitoring System (TPWS)
- Tire repair kit
- Reversing camera with guide lines
- Windscreen wipers with interval setting
- Makeup mirror in the sun visor on the passenger side
- Power steering
- Start-stop system
- Bumpers in body color
- Traction control (TRC)
- Door handles painted in car color
- Door lock with child safety lock at the rear
- Central locking

Extra equipment

- All-weather tires

- Airbags: 6 airbags
- Electrically adjustable and heated exterior mirrors
- Brake light: third in LED
- Light grey headliner
- Bicycle carrier preparation
- High Beam Assist (AHB)
- Fresh air and pollen filter
- Speed limiter
- Transmission: continuously variable automatic transmission
- Heated rear window
- Interior mirror dimming
- air conditioning, manual
- Paint finish: Solid
- Steering wheel: 3-spoke leather steering wheel (manually height-adjustable)
- Multi-information color display (4.2")
- Upholstery: Cloth
- Radio: Toyota Touch multimedia system (Apple CarPlay and Android Auto - DAB (Digital Audio Broadcast) - USB port - Bluetooth hands-free system)
- Wheels: Steel rims 5 J x 17" (with tires 175/65)
- Rear seat backrest split and foldable (50:50 ratio)
- Manual headlight height adjustment
- Makeup mirror in sun visor on driver's side
- Seats: Driver's seat (height adjustable)
- 12V socket, front
- Toyota Safety Sense (Road Sign Assist (RSA) - Pre-Collision System (PCS) with pedestrian and cyclist detection - Driver Attention Assist - Lane Following Assist)
- Immobiliser

- Package: Comfort Package Play (8-inch touch multimedia display - automatic climate control - rain sensor - heated seats for driver and front passenger - smart key system - keyless opening/closing of the vehicle via driver and front passenger doors and tailgate - starting the engine via start/stop button)



Brief expert findings

Documents submitted	At the time of the inspection, the vehicle registration certificate Part 2 (title) was available, but the vehicle registration certificate Part 1 (document) was not. (Copy)
VIN comparison	The vehicle identification number (VIN) was read from the vehicle and its conformity with the submitted documents was confirmed by the undersigned during the inspection.
Inspection	The inspection conditions were sufficient for the assessment of the vehicle. Lifting equipment and/or a pit were available for examining the vehicle.
Test drive	No test drive/shunting maneuver was carried out during the inspection of the vehicle.
Engine function test	An engine test run was performed.

Value reducing factors

No.	Component group	Description
1	Wheel / tyres	Wheel cover - front left side - Scratched - Replace
2	Wheel / tyres	Wheel cover - rear right side - Scratched - Replace
3	Wheel / tyres	Wheel cover - front right side - Scratched - Replace
4	Instrument panel	Indicator light (Reifendruckkontrolle) - on - Diagnosed and repair if necessary
5	Rear bumper	Rear bumper - Scratch(es) - Smart repair
6	Bonnet	Insulation lining - Damage caused by marten / rodent - Replace
7	Wheel / tyres	Tyre - front - Does not meet the leasing specifications - Replace
8	Braking system	Brake discs and brake pads - front (Bremscheiben sind eingelaufen und) - Worn - Replace

Wear and tear

No.	Component group	Description
1	Roof	Roof rail - left side - Stone chips - No deduction
2	Front bumper	Front bumper (Unlackiert) - Scratch(es) - No deduction

The vehicle shows signs of wear and tear commensurate with its age and use.

Missing parts

Description

Equipment - Vehicle key with remote control

Order/Scope of Order

An order was placed to prepare a sales report for the described vehicle. This report includes the following:

- Description of key vehicle information
- Documentation of equipment features
(*Delivery by third-party service providers*)
- Documentation of damage, defects, missing parts
- Documentation of prior damage, unrepaired prior damage, repainting
- A brief visual or functional inspection of the equipment details, if possible.
(*Functional testing of driver assistance systems is not included in the scope of services!*)
- a photographic documentation of the vehicle



Basis for the order

This product is based on the guidelines for vehicle returns and valuations published by Alphabet Fleet GmbH. The expert makes the specific findings in each individual case objectively, within the framework of the prescribed standards, based on their own expertise.

The vehicle inspection takes place in a fully assembled, unassembled state.

Damage or defects that can only be detected during disassembly/diagnostic work or through further investigation remain within the realm of prognostic risk. An increased risk exists due to concealed defects caused by fraudulent misrepresentation and which were not identifiable by the expert.

Damage or defects resulting from normal use or wear and tear of the vehicle will be accepted in accordance with the applicable standard.

There was no explicit identification or monetary consideration of the expected features within the product.

Features which, in their nature and extent, slightly exceed normal use but do not constitute unacceptable damage, will be documented and indicated as signs of wear, if applicable.

Damage or defects that, according to the applicable standard, can no longer be attributed to normal use or wear and tear are listed under "Value Reducing Factors" in the product description.

Depending on the product specification, a monetary ID can be provided. If this takes place, the costs can be 100% d or pro rata depending on the vehicle's age and mileage.

Previous damages

No apparent prior damage that had been repaired could be found on the vehicle.



Figure 1: Diagonal front (left)



Figure 2: Diagonal front (right)



Figure 3: Diagonal rear (left)



Figure 4: Diagonal rear (right)



Figure 5: Interior - front



Figure 6: Interior - rear



Figure 7: Instrument cluster



Figure 8: Instrument panel



Figure 9: Interior 360° view



Figure 10: Cargo area



Figure 11: VIN



Figure 12: Mounted tyres



Figure 13: Documents



Figure 14: Documents



Figure 15: Documents



Figure 16: Documents



Figure 17: Documents

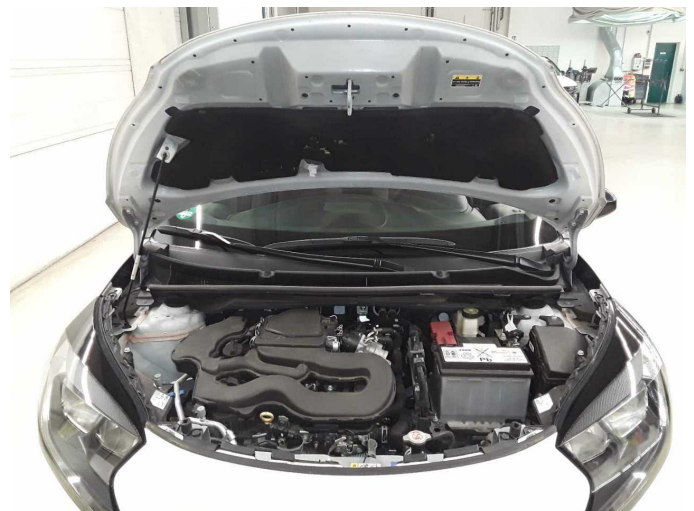


Figure 18: Misc.



Figure 19: Misc.



Figure 20: Misc.



Figure 21: Misc.



Figure 22: Misc.



Figure 23: Misc.



Figure 24: Misc.



Figure 25: Misc.



Figure 26: Misc.

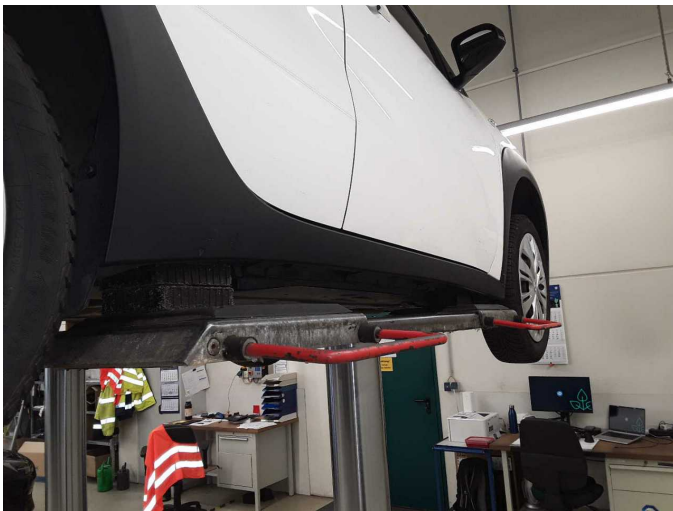


Figure 27: Misc.



Figure 28: Misc.



Damage 1: Wheel / tyres: Wheel cover - front left side - Scratched - Replace



Damage 1: Wheel / tyres: Wheel cover - front left side - Scratched - Replace



Damage 1: Wheel / tyres: Wheel cover - front left side - Scratched - Replace



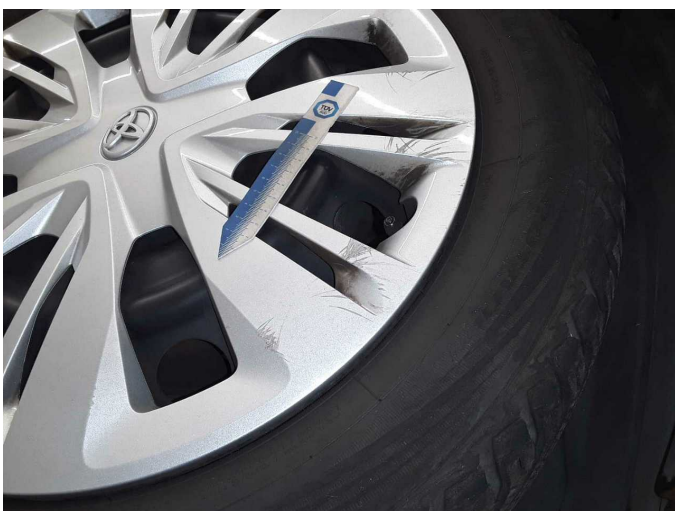
Damage 2: Wheel / tyres: Wheel cover - rear right side - Scratched - Replace



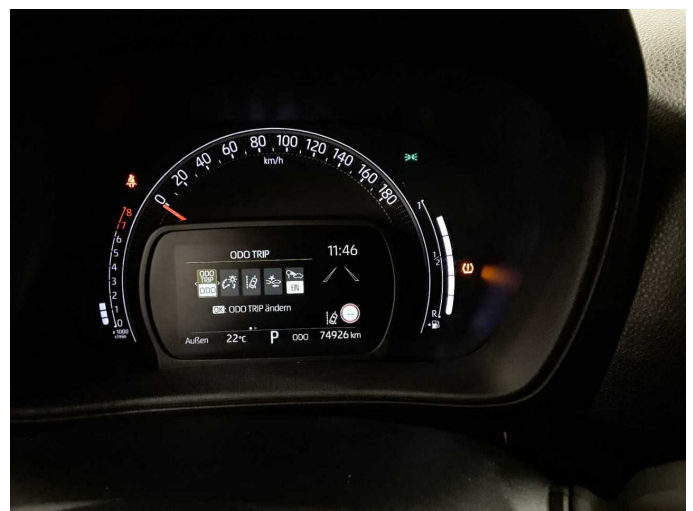
Damage 2: Wheel / tyres: Wheel cover - rear right side - Scratched - Replace



Damage 3: Wheel / tyres: Wheel cover - front right side - Scratched - Replace



Damage 3: Wheel / tyres: Wheel cover - front right side - Scratched - Replace



Damage 4: Instrument panel: Indicator light (Reifendruckkontrolle) - on - Diagnosed and repair if necessary



Damage 5: Rear bumper: Rear bumper - Scratch(es) - Smart repair



Damage 5: Rear bumper: Rear bumper - Scratch(es) - Smart repair



Damage 6: Bonnet: Insulation lining - Damage caused by marten / rodent - Replace



Damage 6: Bonnet: Insulation lining - Damage caused by marten / rodent - Replace



Damage 7: Wheel / tyres: Tyre - front - Does not meet the leasing specifications - Replace



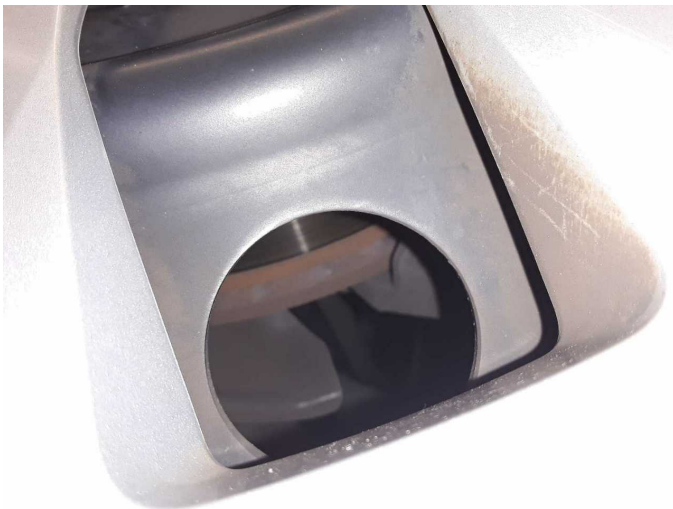
Damage 7: Wheel / tyres: Tyre - front - Does not meet the leasing specifications - Replace



Damage 7: Wheel / tyres: Tyre - front - Does not meet the leasing specifications - Replace



Damage 7: Wheel / tyres: Tyre - front - Does not meet the leasing specifications - Replace



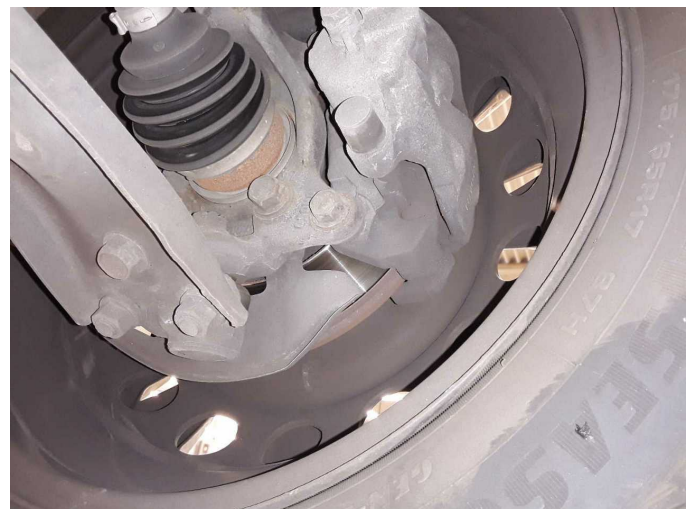
Damage 8: Braking system: Brake discs and brake pads - front (Bremsscheiben sind eingelaufen und) - Worn - Replace



Damage 8: Braking system: Brake discs and brake pads - front (Bremsscheiben sind eingelaufen und) - Worn - Replace



Damage 8: Braking system: Brake discs and brake pads - front (Bremsscheiben sind eingelaufen und) - Worn - Replace



Damage 8: Braking system: Brake discs and brake pads - front (Bremsscheiben sind eingelaufen und) - Worn - Replace



Damage 8: Braking system: Brake discs and brake pads - front (Bremscheiben sind eingelaufen und) - Worn - Replace



Damage 8: Braking system: Brake discs and brake pads - front (Bremscheiben sind eingelaufen und) - Worn - Replace



Damage 8: Braking system: Brake discs and brake pads - front (Bremscheiben sind eingelaufen und) - Worn - Replace



Wear and tear 1: Roof: Roof rail - left side - Stone chips - No deduction



Wear and tear 1: Roof: Roof rail - left side - Stone chips - No deduction



Wear and tear 2: Front bumper: Front bumper (Unlackiert) - Scratch(es) - No deduction



Wear and tear 2: Front bumper: Front bumper (Unlackiert) - Scratch(es) - No deduction



Wear and tear 2: Front bumper: Front bumper (Unlackiert) - Scratch(es) - No deduction



Wartungshistorie

(gemäß Auftraggeber Informationen)

Fahrgestellnummer: JTDAGNAC600111903
Hersteller / Modell: TOYOTA TOYOTA Aygo X S-CVT Play

Datum	KM-Stand	Beschreibung
29.05.2026	73.884	HU + AU
24.09.2025	65.327	Bremsflüssigkeit; Luftfiltereinsatz ern; Motoröl b. Wartung; Ölfilter ern; Regelwartungsdienst; Wartung Sonstiges
21.03.2025	49.146	Motoröl b. Wartung; Ölfilter ern; Regelwartungsdienst; Wartung Sonstiges
20.09.2024	32.668	Motoröl b. Wartung; Ölfilter ern; Regelwartungsdienst; Wartung Sonstiges
25.06.2024	17.906	Motoröl b. Wartung; Ölfilter ern; Regelwartungsdienst; Wartung Sonstiges