

## Expertise

Protocol number: 45572873  
Order No. / Reference: 26276787  
Inspection date: 15 May 2026

Manufacturer: Skoda

Model: Kodiaq 2.0 TDI 4x4 DSG Drive 125

VIN: TMBLN7NS4M8030806



### Vehicle details

#### Manufacturer / Type / Model / Equipment

Skoda Kodiaq 2.0 TDI 4x4 DSG Drive 125

**Vehicle Identification number** TMBLN7NS4M8030806

**Mileage (Read)** 148,564 km

**First registration** 12 Jan 2021

**Number of holders** 1

**Next periodical technical inspection** 02/2028  
(Report not on hand)

**Power / Engine displacement** 147 kw / 1,968 ccm

**Fuel type / Cylinder** Diesel / 4

**Gearbox / Number of gears** Automatic / 7

**Type of drive** All-wheel drive

**Type of vehicle** SUV

**Colour / colour code** Crystal-Black Premium  
Metallic

**Doors / Seats** 5 / 5

**Upholstery type** Cloth

**Colour of upholstery** Black-Grey



Vehicle details			
<b>Maintenance booklet / proof</b>	digital proof / complete	<b>Next maintenance in</b>	3,300 km
<b>Last service on / at</b>	04/2025 at 121,843 km		
<b>Key is / should be</b>	2 / 2	<b>FZG documents</b>	ZB#2 (B) was available (copy), ZB#1 (S) was not available.
		<b>Letter No.</b>	FX240806
<b>Previous damage / Accident</b>	None detectable	<b>Repainting</b>	None detectable
<b>Inspection conditions</b>	sufficient	<b>Lifting equipment / pit</b>	yes
<b>Test drive</b>	Not performed	<b>Engine function test</b>	Performed
<b>Manufacturer key number/ type code number</b>	8004 / AVW 00156		
<b>Emission standard</b>	EURO6;WLTP;AP;PI/CI; M, N1 I	<b>fine dust sticker</b>	
<b>Permitted total weight</b>	2,369 kg	<b>Empty weight</b>	

## Tyres

Mounted tyres				
#	Tyre size	Type of tyre	Manufacturer	Tread depth
1)	235/55 R18 100H	Winter tyres on Light alloy	Continental	5mm / 5mm
2)	235/55 R18 100H	Winter tyres on Light alloy	Continental	5mm / 5mm
Additional tyres				
#	Tyre size	Type of tyre	Manufacturer	Tread depth
1)	235/50 R19 99V	Summer tires (with run-flat tires) on Light alloy	Pirelli	4mm / 4mm
2)	235/50 R19 99V	Summer tires (with run-flat tires) on Light alloy	Pirelli	6mm / 6mm
Replacement				
Typ	Tyre size	Type of tyre	Manufacturer	Tread depth
E	145/85 R18 103M	Summer tyres on Steel	Sonstige	3 mm

**Legend: Tread depth information for the left tire is listed first, for the right tire it is listed second on the axle in the direction of travel.**

TÜV SÜD Auto Partner GmbH  
Wiesenring 2  
04159 Leipzig

Inspection location  
Hartmann Fleet Professionals GmbH  
Leerenstraße 25  
29683 Bad Fallingbommel



## Equipment



## Standard equipment

- Storage compartment on the left wheel arch
- Storage compartments (ticket holder on the windshield, closed storage compartment on the driver's side, 4 roof grab handles, rear with coat hooks, coat hooks on the B-pillar, high-visibility vest compartment in the front doors, sunglasses compartment in the headliner, storage compartments in the door panels (front and rear) with bottle holders (1.5l front, 1l rear), cup holder in the front center console with "Easy-Open" bottle opening, storage pockets on the front seatbacks)
- Permanent all-wheel drive
- Traction control (ASR)
- Traveller Plus (DSG) assistance system (Adaptive Cruise Control ACC (control range up to 210 km/h) - Lane Assist, Blind Spot Detection and Parking Assist, Exit Warning - Adaptive Lane Guidance - Park Assist - Traffic Jam and Emergency Assist)
- Hydraulic brake assist
- Cargo elements in the trunk
- Roof rails, black
- Anti-theft alarm system (with SAFE system, interior monitoring and tilt sensor)
- Third brake light (in the rear spoiler (LED))
- Electric tailgate operation including comfort opening
- Electronic parking brake including auto-hold function
- ESC Electronic Stability Control
- Electric windows front and rear (including anti-pinch protection and child safety lock)
- Transmission: 7-speed dual-clutch transmission (DSG)
- Tinted windows
- Illuminated glove compartment
- Heated rear window
- ISOFIX preparation on the outer rear seats (including top tether)
- Climatronic air conditioning (2-zone) (fully automatic, separately adjustable for driver and front passenger, including humidity sensor, odor and allergen filter and air-conditioned glove compartment)
- LED headlights with LED daytime running lights (incl. adaptive front headlights (AFS): lighting system with fully automatic and situation-dependent light control (city, country road, motorway and bad weather mode), cornering lights, automatic headlight range control)
- Steering wheel: Heated steering wheel (including paddle shifters)
- Rear center armrest with cup holders and pass-through option
- Front center armrest, including storage compartment
- Multifunction display in the instrument cluster, color
- Network program in the trunk
- Park Assist 3.0 with front parking sensors
- Upholstery: Cloth
- Radio: Infotainment system Columbus (RS)
- Radio accessories: Digital radio reception DAB+
- Radio accessories: Wireless SmartLink (Apple CarPlay)
- Tire mobility kit (tire repair spray incl. compressor)
- Storage compartments behind the wheel arches in the trunk
- Removable waste bin for the door panel
- front aero windshield wipers
- Airbag for driver and front passenger (passenger airbag can be deactivated)
- Airbag, driver's knee airbag
- Airbag, head airbags
- Airbag, front side airbags
- Allergen filter
- Anti-lock braking system (ABS)
- Dashboard in black / black, door trim in black
- Electrically folding exterior mirrors including interior and exterior mirrors with automatic dimming.
- Electrically adjustable and heated exterior mirrors with integrated side indicators
- Hill start assist
- Care Connect: Proactive services (10-year term) (Remote Access (1-year term))
- Decorative inlay Mythos Glossy Black
- Diesel particulate filter
- Tachometer
- eCall (automatic emergency call function in case of an accident with airbag deployment)
- Electronic transverse differential lock (XDS+)
- Driving light assistant and rain sensor ((tunnel light, coming and leaving home function))
- Front radar assistant including city emergency braking function with pedestrian detection
- Green tec (Start/Stop automatic including brake energy recuperation)
- Aero rear window wiper including windshield washer system
- Kessy - keyless entry and start-stop system
- Boot cover, roll-up and removable
- Front and rear headrests are height-adjustable.
- LED ambient lighting (decorative strips in the door panels with selectable color climate, LED reading lights in the front, LED lighting for the make-up mirrors in the sun visors)
- LED taillights in crystal glass look & LED license plate lights
- Steering wheel with multifunction buttons (steering wheel with radio controls)
- Steering wheel: Leather steering wheel with multifunction buttons (height and reach adjustable - gearshift lever with leather elements)
- MSR (Motor drag torque control)
- Fog lights with integrated LED daytime running lights
- Package: Family (Removable waste bin for the door panel - Sunshades for the rear side windows - Door edge protectors - Electric child safety lock adjustment)
- Radio accessories: 8 speakers
- Radio accessories: SmartLink (MirrorLink, Android Auto and Apple CarPlay)
- Tire pressure monitoring



- Wheels: 19" alloy wheels Aero Anthracite-gloss-turned (7Jx19 tires 235/50 R19 99V ET43)
- Heated windshield washer nozzles
- Electromechanical power steering
- Seats: Heated front and outer rear seats
- Seats: Driver and front passenger seats are height-adjustable (including adjustable lumbar support)
- Skoda Care Connect (SOS emergency call function (Emergency Call including automatic activation in the event of an accident with airbag deployment), Mobility service (connection for rapid assistance in case of breakdown), Information service (connection to the hotline for all questions regarding vehicle functions), Free remote vehicle access for 1 year (Remote Access) with access to vehicle data and functions via smartphone)
- Sunset (rear window and rear side windows tinted dark)
- Front door sill trims
- Variable fastening concept in the boot (only for 5-seaters)
- Lashing eyes in the trunk
- Central locking with remote control

**Extra equipment**

- Swiveling trailer hitch (with electric release, including trailer stabilization)
- Fatigue detection
- Electric panoramic sunroof including sunshade (no glasses compartment in the headliner)
- Wheels: 18" steel spare wheel, space-saving (tire 145/85 R18 incl. jack, wheel bolt wrench, load floor cover replaces tire mobility kit)
- Auxiliary heater with remote control
- 360° surround view camera (Area-View) including trailer maneuvering assistant (Trailer Assist), parking assistant

- Rear seat backrest split 60:40, foldable, longitudinally adjustable, backrest angle adjustable
- Headlights washer / wiper system
- Kodiaq safety belts (Height-adjustable three-point seat belts in the front, with belt tensioners - Three three-point seat belts in the rear - Belt fastening indicator in the front and in the second row of seats)
- Skoda Infotainment Online (online map updates for navigation (only in conjunction with Columbus infotainment system) - display of weather data, news, headlines - petrol stations and parking space search and much more)
- Sunshade roller blind for the rear side windows
- 12V socket - in the center console and in the trunk
- Bumpers painted in body color (exterior mirrors and door handles painted in body color)
- Telephone: Comfort hands-free telephone system including phone box (with inductive charging function (connection via external antenna))
- Immobiliser

- High beam assist
- Paint finish: Premium paint finish
- Package: Business Columbus (Drive) (Columbus dynamic radio navigation system with MP3, 9.2" capacitive color display, digital instrument cluster (virtual cockpit), Wi-Fi hotspot (data connection via SIM in LTE modem or via the paired mobile phone), 230 V socket and USB port, luggage net partition, Infotainment Online (3-year subscription))

**Brief expert findings**

Documents submitted	At the time of the inspection, the vehicle registration certificate Part 2 (title) was available, but the vehicle registration certificate Part 1 (document) was not. (Copy)
VIN comparison	The vehicle identification number (VIN) was read from the vehicle and its conformity with the submitted documents was confirmed by the undersigned during the inspection.
Inspection	The inspection conditions were sufficient for the assessment of the vehicle. Lifting equipment and/or a pit were available for examining the vehicle.
Test drive	No test drive/shunting maneuver was carried out during the inspection of the vehicle.
Engine function test	An engine test run was performed.



## Value reducing factors

No.	Component group	Description
1	Documents	Service book (30000er & 60000er Insp überzogen) - Incomplete - No deduction
2	Side panel - rear right side	Side panel - dent(s) - Smooth repair work
3	Side panel - rear left side	Side panel - dent(s) - Smooth repair work
4	Front bumper	Spoiler - Deformed - Replace
5	Door - front right side	Door - Corrosion - Repair and paint
6	Door - rear right side	Door - Deformed - Repair and paint
7	Headlight	Headlight - left side (+ Rechts / Milchig) - Not admissible - Replace

## Wear and tear

No.	Component group	Description
1	2nd wheel set	2nd wheel set - Soiled - No deduction
2	Vehicle glazing	Windscreen - Stone chips - No deduction
3	Bonnet	Bonnet - Stone chips - No deduction
4	Front bumper	Front bumper - Scratch(es) - No deduction
5	Wing mirror - left side	Cap - Scratch(es) - No deduction

The vehicle shows signs of wear and tear commensurate with its age and use.

## Order/Scope of Order

An order was placed to prepare a sales report for the described vehicle. This report includes the following:

- Description of key vehicle information
- Documentation of equipment features  
(*Delivery by third-party service providers*)
- Documentation of damage, defects, missing parts
- Documentation of prior damage, unrepaired prior damage, repainting
- A brief visual or functional inspection of the equipment details, if possible.  
(*Functional testing of driver assistance systems is not included in the scope of services!*)
- a photographic documentation of the vehicle

## Basis for the order

This product is based on the guidelines for vehicle returns and valuations published by Alphabet Fleet GmbH. The expert makes the specific findings in each individual case objectively, within the framework of the prescribed standards, based on their own expertise.

The vehicle inspection takes place in a fully assembled, unassembled state.

Damage or defects that can only be detected during disassembly/diagnostic work or through further investigation remain within the realm of prognostic risk. An increased risk exists due to concealed defects caused by fraudulent misrepresentation and which were not identifiable by the expert.

Damage or defects resulting from normal use or wear and tear of the vehicle will be accepted in accordance with the applicable standard.

There was no explicit identification or monetary consideration of the expected features within the product.

Features which, in their nature and extent, slightly exceed normal use but do not constitute unacceptable damage, will be documented and indicated as signs of wear, if applicable.

Damage or defects that, according to the applicable standard, can no longer be attributed to normal use or wear and tear are listed under "Value Reducing Factors" in the product description.

Depending on the product specification, a monetary ID can be provided. If this takes place, the costs can be 100% d or pro rata depending on the vehicle's age and mileage.



## Previous damages

No apparent prior damage that had been repaired could be found on the vehicle.

## Comments

-Der montierte Winterradsatz ist kein Bestandteil des Auslieferungsumfangs.



Figure 1: Diagonal front (left)



Figure 2: Diagonal front (right)



Figure 3: Diagonal rear (left)



Figure 4: Diagonal rear (right)

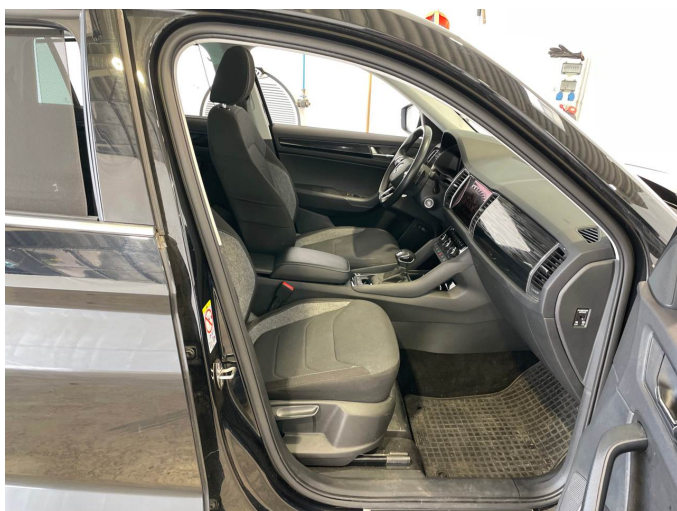


Figure 5: Interior - front



Figure 6: Interior - rear



Figure 7: Instrument cluster



Figure 8: Instrument panel



Figure 9: Interior 360° view



Figure 10: Cargo area

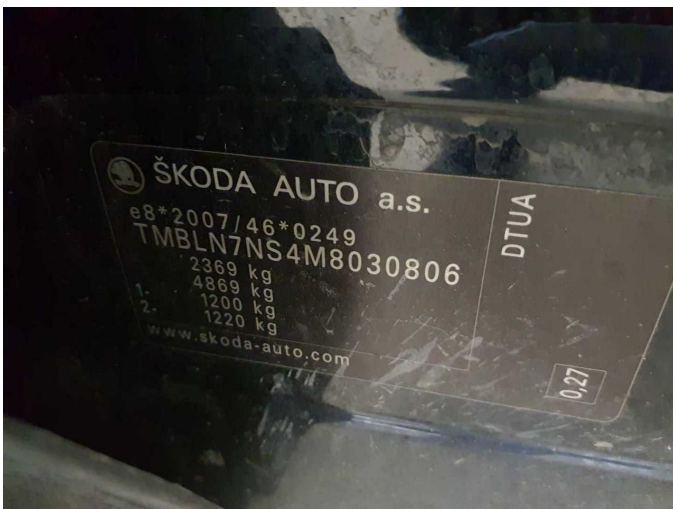


Figure 11: VIN



Figure 12: Mounted tyres

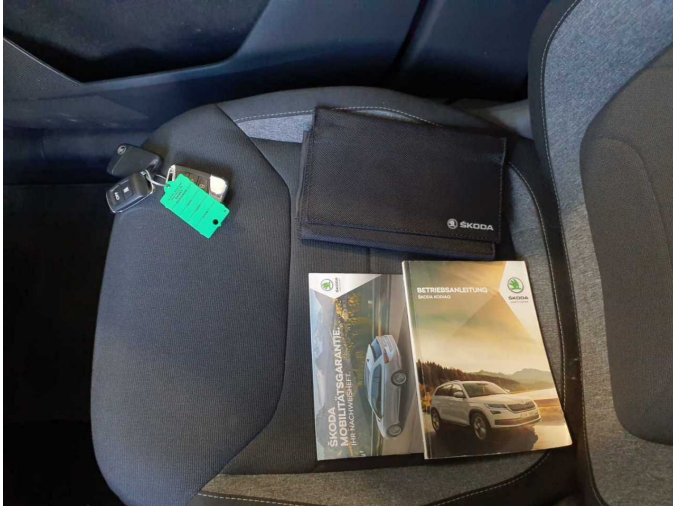


Figure 13: Documents



Figure 14: Additional tyres



Figure 15: Navigation



Figure 16: Misc.



Figure 17: Misc.



Figure 18: Misc.



Figure 19: Misc.



Figure 20: Misc.



Figure 21: Misc.



Figure 22: Misc.



Figure 23: Misc.



Figure 24: Misc.



Figure 25: Misc.



Figure 26: Misc.



Figure 27: Misc.



Figure 28: Misc.

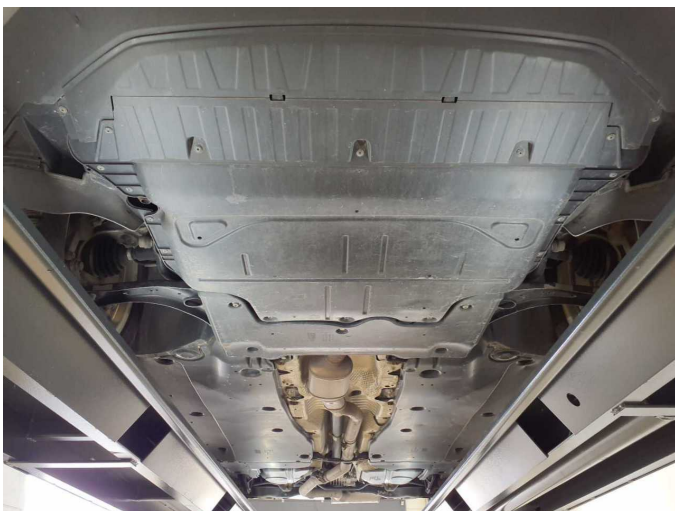


Figure 29: Misc.



Figure 30: Misc.



**Damage 2:** Side panel - rear right side: Side panel - dent(s) - Smooth repair work



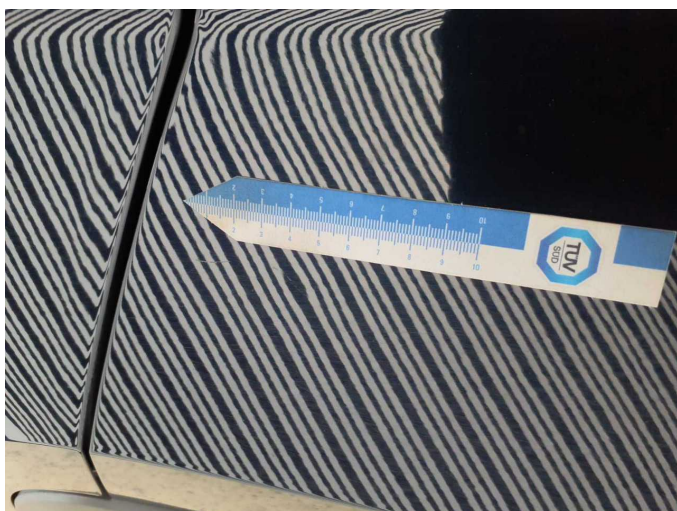
**Damage 2:** Side panel - rear right side: Side panel - dent(s) - Smooth repair work



**Damage 3:** Side panel - rear left side: Side panel - dent(s) - Smooth repair work



**Damage 3:** Side panel - rear left side: Side panel - dent(s) - Smooth repair work



**Damage 3:** Side panel - rear left side: Side panel - dent(s) - Smooth repair work



**Damage 3:** Side panel - rear left side: Side panel - dent(s) - Smooth repair work



**Damage 4:** Front bumper: Spoiler - Deformed - Replace



**Damage 4:** Front bumper: Spoiler - Deformed - Replace



**Damage 4:** Front bumper: Spoiler - Deformed - Replace



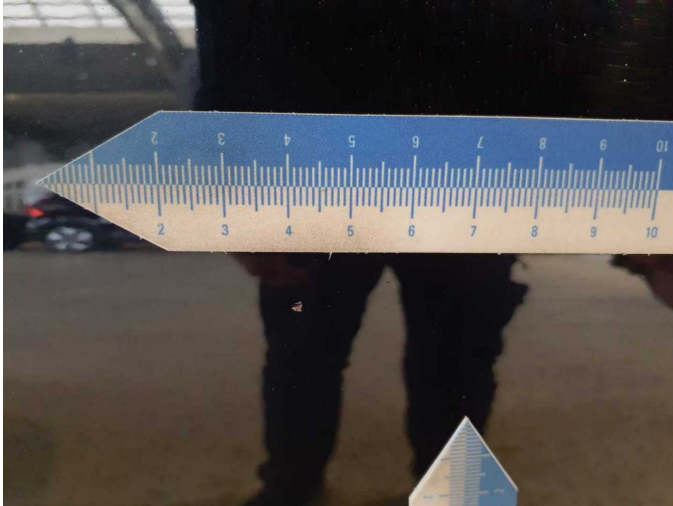
**Damage 4:** Front bumper: Spoiler - Deformed - Replace



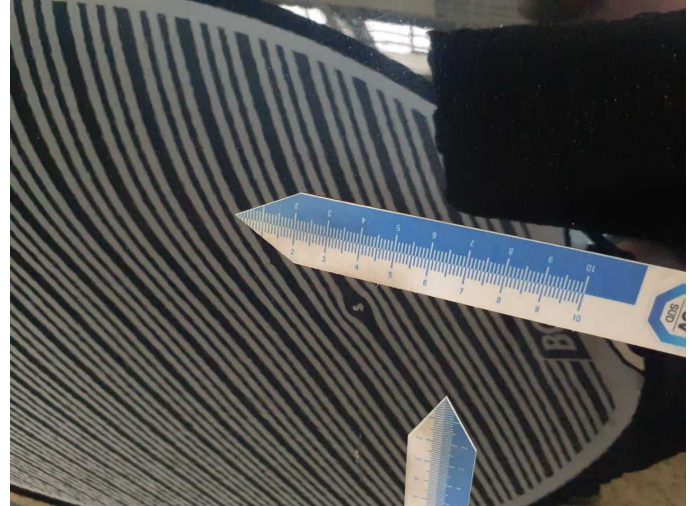
**Damage 4:** Front bumper: Spoiler - Deformed - Replace



**Damage 5:** Door - front right side: Door - Corrosion - Repair and paint



**Damage 5:** Door - front right side: Door - Corrosion - Repair and paint



**Damage 5:** Door - front right side: Door - Corrosion - Repair and paint



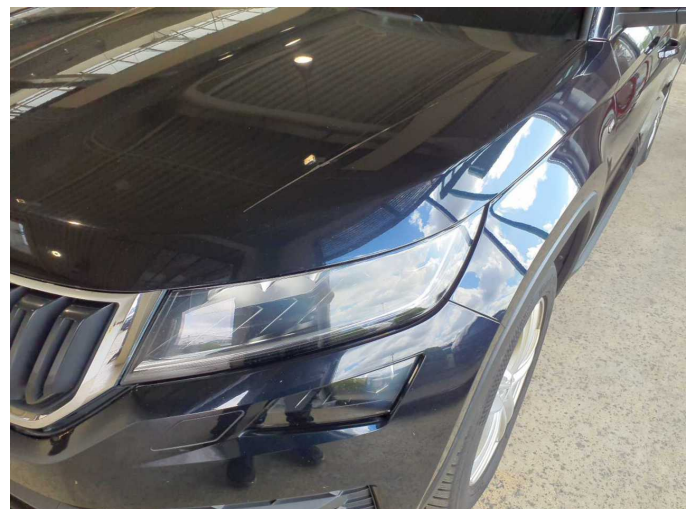
**Damage 5:** Door - front right side: Door - Corrosion - Repair and paint



**Damage 6:** Door - rear right side: Door - Deformed - Repair and paint



**Damage 6:** Door - rear right side: Door - Deformed - Repair and paint



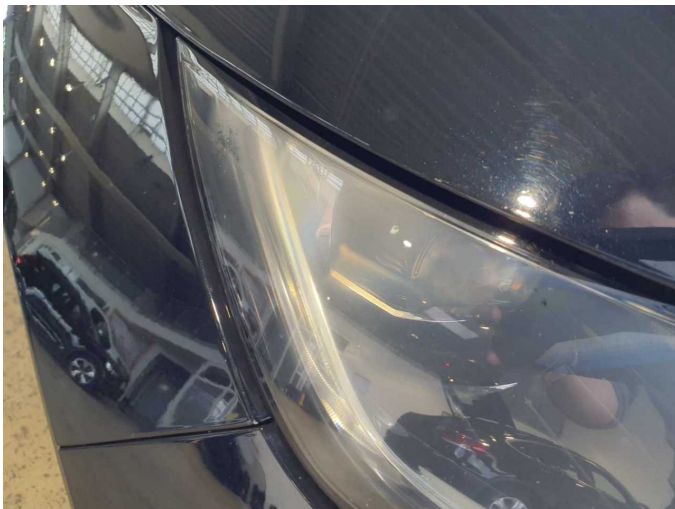
**Damage 7:** Headlight: Headlight - left side (+ Rechts / Milchig) - Not admissible - Replace



**Damage 7:** Headlight: Headlight - left side (+ Rechts / Milchig) - Not admissible - Replace



**Damage 7:** Headlight: Headlight - left side (+ Rechts / Milchig) - Not admissible - Replace



**Damage 7:** Headlight: Headlight - left side (+ Rechts / Milchig) - Not admissible - Replace



**Damage 7:** Headlight: Headlight - left side (+ Rechts / Milchig) - Not admissible - Replace



# Wartungshistorie

(gemäß Auftraggeber Informationen)

Fahrgestellnummer: TMBLN7NS4M8030806  
Hersteller / Modell: SKODA SKODA Kodiaq 2.0 TDI 4x4 DSG Drive 125

Datum	KM-Stand	Beschreibung
05.02.2026	0	HU + AU
29.08.2025	140.420	Batterie ern; Systemtest/Eigendiagnose
11.04.2025	121.843	Bremse Sonstiges; Bremsflüssigkeit; Bremsflüssigkeit ern; Bremsklötze vorne; Getriebeöl ern/prüfen; Motoröl b. Wartung; Ölfilter ern; Ölwechsel - Hinterachse; Regelwartungsdienst; Reparatur Sonstiges; Wartung Sonstiges
10.05.2024	92.208	Kraftstofffilter ern; Luftfiltereinsatz ern; Motoröl b. Wartung; Ölfilter ern; Regelwartungsdienst; Systemtest/Eigendiagnose; Wartung Sonstiges
26.01.2024	82.929	AU
20.06.2023	62.363	Bremsflüssigkeit ern; Bremsscheiben + Klötze h; Bremsscheiben + Klötze v; Motoröl b. Wartung; Ölwechsel - Hinterachse; Regelwartungsdienst
22.12.2022	47.780	Systemtest/Eigendiagnose
18.05.2022	30.356	Motoröl b. Wartung; Regelwartungsdienst