

## Expertise

Protocol number: 45800289  
Order No. / Reference: 26332027  
Inspection date: 22 May 2026

Manufacturer: Mercedes-Benz

Model: C 300 d T 9G-TRONIC Avantgarde

VIN: W1KAH0GB8PF101997



### Vehicle details

#### Manufacturer / Type / Model / Equipment

Mercedes-Benz C 300 d T 9G-TRONIC Avantgarde

**Vehicle Identification number** W1KAH0GB8PF101997

**Mileage (Read)** 84,691 km

**First registration** 17 Mar 2023

**Number of holders** 1

**Power / Engine displacement** 195 kw / 1,993 ccm

**Fuel type / Cylinder** Hybrid Diesel / E / 4

**Gearbox / Number of gears** Automatic / 9

**Type of drive** Rear drive

**Type of vehicle** Station wagon

**Colour / colour code** SELENITGRAU -  
METALLIKLACK

**Doors / Seats** 5 / 5

**Upholstery type** Cloth / leather  
combination

**Colour of upholstery** Black-Grey



## Vehicle details

|  |                              |                                |  |
|--|------------------------------|--------------------------------|--|
| <b>Maintenance booklet / proof</b>                   | Non-existent                 | <b>Next maintenance in</b>     | 268 Tag(e)   |
| <b>Key is / should be</b>                            | 2 / 2                        | <b>FZG documents</b>           | ZB#2 (B) was available (copy), ZB#1 (S) was not available. |
|  |                              | <b>Letter No.</b>              | GS680413   |
| <b>Previous damage / Accident</b>                    | Detectable                   | <b>Repainting</b>              | None detectable  |
| <b>Inspection conditions</b>                         | sufficient                   | <b>Lifting equipment / pit</b> | No   |
| <b>Test drive</b>                                    | Not performed                | <b>Engine function test</b>    | Performed  |
| <b>Manufacturer key number/<br/>type code number</b> | 2222 / AY1 00149             |                                |  |
| <b>Emission standard</b>                             | EURO6;WLTP;AP;PI/CI; M, N1 I | <b>fine dust sticker</b>       |  |
| <b>Permitted total weight</b>                        | 2,400 kg                     | <b>Empty weight</b>            |  |

## Tyres

### Mounted tyres

| #  | Tyre size      | Type of tyre                | Manufacturer | Tread depth |
|----|----------------|-----------------------------|--------------|-------------|
| 1) | 225/45 R18 95Y | Summer tyres on Light alloy | Goodyear     | 5mm / 4mm   |
| 2) | 245/40 R18 97Y | Summer tyres on Light alloy | Goodyear     | 5mm / 5mm   |

### Additional tyres

| #  | Tyre size      | Type of tyre                | Manufacturer | Tread depth |
|----|----------------|-----------------------------|--------------|-------------|
| 1) | 225/50 R17 98H | Winter tyres on Light alloy | Dunlop       | 5mm / 5mm   |
| 2) | 225/50 R17 98H | Winter tyres on Light alloy | Dunlop       | 7mm / 6mm   |

**Legend: Tread depth information for the left tire is listed first, for the right tire it is listed second on the axle in the direction of travel.**



## Equipment

### Standard equipment

- Airbag for driver and front passenger
  - Airbag: Center airbag
  - Airbag: Windowbag for driver and front passenger
  - Left and right exterior mirrors are heated and electrically adjustable
  - Roof rails in polished aluminum
  - Double cup holder at the front
  - EASY-PACK tailgate
  - Electronic Stability Program (ESP)
  - Velour floor mats
  - Transmission: 9-speed automatic, 9G-TRONIC
  - Rear bumper in body color
  - Interior headliner fabric crystal grey
  - KEYLESS-GO start function
  - Rear headrests (3)
  - Paint finish: Solid
  - LED High Performance Headlights
  - Mercedes-Benz emergency call system
  - Center console in high-gloss black
  - Package: AVANTGARDE Exterior
  - Upholstery: ARTICO leatherette/fabric
  - Radio accessories: Digital radio (DAB)
  - Tire pressure monitoring system (TPMS)
  - Remote Services Plus
  - Power steering
  - Cruise control
  - Electronic immobilizer
  - Decorative elements in diamond pattern, silver-grey
- Airbag: Automatic passenger airbag deactivation
  - Airbag: Side airbag for driver and front passenger
  - Ambient lighting with 64 light colors
  - Basic services
  - Brake assist, active
  - Diesel particulate filter
  - DYNAMIC SELECT
  - ECO start/stop function
  - Electric windows (4-way)
  - Speed Limit Assistant
  - rear window wiper
  - Heated rear window
  - ISOFIX child seat attachment with top tether in the rear
  - Mechanical child safety lock for the rear doors
  - Front headrests
  - Cargo area cover including EASY-PACK safety net
  - Steering wheel: Multifunction sports steering wheel in leather
  - Package: Storage
  - Package: Interior lighting package
  - Radio: Extended MBUX functions
  - Radio accessories: Communication module (LTE) for using Mercedes me connect services
  - Windscreen wipers with rain sensor
  - Seats: Rear seat backrests foldable
  - High-visibility vest for drivers
  - Central locking with remote control



## Extra equipment

- Towbar with ESP trailer stabilization
- Head-up display
- THERMOTRONIC automatic climate control with 4 climate zones (controlled via the central display or the climate control unit in the center console, with Auto button for automatic control of temperature, air volume and air distribution - control unit on the back of the center console - automatic recirculation when a tunnel is detected via GPS, only in conjunction with navigation system - sensors for detecting e.g. inside/outside temperature - fine dust activated carbon filter - ventilation system - dew point sensors - residual heat function for efficient use of engine waste heat)
- Package: High-End Infotainment Package (MBUX Navigation Premium (hard drive navigation, pre-installation for Live Traffic Information), Traffic Sign Assist, Smartphone Integration (connects the mobile phone wirelessly to the multimedia system via Apple CarPlay and Android Auto), Wireless charging system for mobile devices in the front, Driver display - 31.2 cm (12.3") color LCD display, Central display - 30.2 cm (11.9") touch display, MBUX Augmented Reality for navigation.)
- Package: Night (for T-Model with Avantgarde exterior) (Radiator grille: louvers in high-gloss black and trim in glossy chrome (17") 5-spoke design light-alloy wheels, black painted and diamond-turned with 225/50 R17 tires on 7Jx17 ET44, 5 Front apron with trim (wing) in high-gloss black Rear bumper with trim (wing) in high-gloss black Belt trim strip and window surrounds in high-gloss black Exterior mirror housings painted in high-gloss black Heat-insulating dark tinted glass at the rear (from the B-pillar) Roof rails in black)
- Package: Mirror package (both exterior mirrors electrically folding (button in the driver's door control panel) - interior mirror and exterior mirror on the driver's side automatically dimming continuously - ambient lighting of the exterior mirror to illuminate the entry area with projection of the Mercedes-Benz logo)
- Seats: Comfort seats
- Sunshades in the rear doors, left and right (manually extendable)
- Heat-insulating dark tinted glass
- Brake system with larger brake discs on the front axle
- Instrument panel and door sills in ARTICO man-made leather in black nappa look
- Fuel tank with larger capacity
- Paint finish: Metallic
- Package: Driving Assistance Package Plus (Active Distance Assist DISTRONIC, Active Speed Limit Assist, Extended Automatic Restart on Highways, Route-Based Speed Adaptation with Traffic Jam End Function, Active Traffic Jam Assist, Active Steering Assist, Active Lane Change Assist, Active Emergency Stop Assist, Emergency Lane Function, Active Brake Assist with Vehicle, Bicycle and Pedestrian Detection; Intersection Function, Turn Function, Traffic Jam End Emergency Braking Function, Evasive Steering Assist, Active Lane Keeping Assist, Active Blind Spot Assist, PRE-SAFE Impulse Side)
- Package: High-End Comfort Package (Seat heating for driver and front passenger - Memory Package: Driver and front passenger seats, steering column and exterior mirrors electrically adjustable and storable; Seat longitudinal position and headrest height additionally electrically adjustable; 3 memory settings each for driver and front passenger; 4-way lumbar support for driver and front passenger; Seat cushion depth adjustment with gapless cushion; PRE-SAFE positioning function for the front passenger seat)
- Package: Parking (12 ultrasonic sensors - reversing camera - Active Parking Assist with PARKTRONIC: detects free parking spaces, assisted parking, visual and acoustic warning, display of camera and ultrasonic data in the media display - Cross traffic warning: can provide visual and acoustic warnings when reversing out of a parking space and, if necessary, automatically initiate emergency braking - Reverse maneuvering brake: can trigger a braking process - Drive-away assist)
- Wheels: 45.7 cm (18") light alloy wheels in 5-twin-spoke design (black painted and polished with front axle 225/45 R 18 on 7.5 J x 18 ET 40, rear axle 245/40 R 18 on 8.5 J x 18 ET 52)
- Type designation removed from trunk lid
- Heat and noise insulating acoustic glass (for windshield and front doors)

## Brief expert findings

|                      |   |
|----------------------|---|
| Documents submitted  | At the time of the inspection, the vehicle registration certificate Part 2 (title) was available, but the vehicle registration certificate Part 1 (document) was not. (Copy)  |
| VIN comparison       | The vehicle identification number (VIN) was read from the vehicle and its conformity with the submitted documents was confirmed by the undersigned during the inspection.   |
| Inspection           | The inspection conditions were sufficient for the assessment of the vehicle.<br>No lifting equipment or pit was available for inspecting the vehicle. Therefore, inspection of the vehicle's underside was only possible to a limited extent. |
| Test drive           | No test drive/shunting maneuver was carried out during the inspection of the vehicle.   |
| Engine function test | An engine test run was performed.   |



## Value reducing factors

| No. | Component group              | Description  |
|-----|------------------------------|--|
| 1   | Misc.                        | Inspection / maintenance - No evidence - No deduction  |
| 2   | Misc.                        | Main inspection - No evidence - No deduction   |
| 3   | Bonnet                       | Bonnet - dent(s) - Smooth repair work  |
| 4   | Side panel - rear right side | Sill - Dent / paintcoat damage - Smart repair  |
| 5   | Sill - left side             | Sill - Scratch(es) - Smart repair  |
| 6   | Wheel / tyres                | Tyre - rear right side (nicht fahrbereit) - Porous / cracked - Replace                           |
| 7   | Wheel / tyres                | Alloy rim - rear right side - Scratch(es) - Loss in value  |
| 8   | Door - rear left side        | Door - Dent / paintcoat damage - Repair and paint  |
| 9   | Rear bumper                  | Rear bumper (Zusätzlich Kratzer Blende und Spoiler) - Dent / paintcoat damage - Repair and paint |

## Wear and tear

| No. | Component group              | Description   |
|-----|------------------------------|---|
| 1   | Trim / covers                | Boot lid - interior trim - Scratch(es) - No deduction         |
| 2   | Side panel - rear right side | Side panel - dent(s) - No deduction                           |
| 3   | Boot lid / rear door         | Boot lid - dent(s) - No deduction                             |
| 4   | Vehicle glazing              | Windscreen - Stone chips - No deduction                       |
| 5   | Body                         | B-pillar - left side - Dent / paintcoat damage - No deduction |

The vehicle shows signs of wear and tear commensurate with its age and use.

## Previous damages

| No. | Previous damage   | Extent of damage (Net) |
|-----|---|------------------------|
| 1   | Side - left, Provided by user / customer, from 4 Mar 2025 | 1.158,00 €             |

## Order/Scope of Order

An order was placed to prepare a sales report for the described vehicle. This report includes the following:

- Description of key vehicle information
- Documentation of equipment features  
(*Delivery by third-party service providers*)
- Documentation of damage, defects, missing parts
- Documentation of prior damage, unrepaired prior damage, repainting
- A brief visual or functional inspection of the equipment details, if possible.  
(*Functional testing of driver assistance systems is not included in the scope of services!*)
- a photographic documentation of the vehicle



## Basis for the order

This product is based on the guidelines for vehicle returns and valuations published by Alphabet Fleet GmbH. The expert makes the specific findings in each individual case objectively, within the framework of the prescribed standards, based on their own expertise.

The vehicle inspection takes place in a fully assembled, unassembled state.

Damage or defects that can only be detected during disassembly/diagnostic work or through further investigation remain within the realm of prognostic risk. An increased risk exists due to concealed defects caused by fraudulent misrepresentation and which were not identifiable by the expert.

Damage or defects resulting from normal use or wear and tear of the vehicle will be accepted in accordance with the applicable standard.

There was no explicit identification or monetary consideration of the expected features within the product.

Features which, in their nature and extent, slightly exceed normal use but do not constitute unacceptable damage, will be documented and indicated as signs of wear, if applicable.

Damage or defects that, according to the applicable standard, can no longer be attributed to normal use or wear and tear are listed under "Value Reducing Factors" in the product description.

Depending on the product specification, a monetary ID can be provided. If this takes place, the costs can be 100% or pro rata depending on the vehicle's age and mileage.

## Previous damages

According to available information previous damages were repaired at the vehicle. Traces of repairs, which allow conclusions about the area of repair, were not recognizable during the inspection.



Figure 1: Diagonal front (left)



Figure 2: Diagonal front (right)



Figure 3: Diagonal rear (left)



Figure 4: Diagonal rear (right)



Figure 5: Interior - front



Figure 6: Interior - rear



Figure 7: Instrument cluster



Figure 8: Instrument panel



Figure 9: Interior 360° view



Figure 10: Cargo area

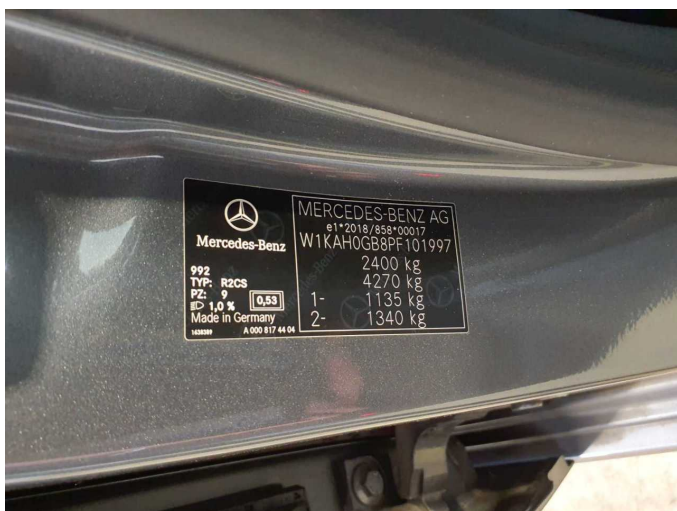


Figure 11: VIN



Figure 12: Mounted tyres



Figure 13: Documents



Figure 14: Additional tyres

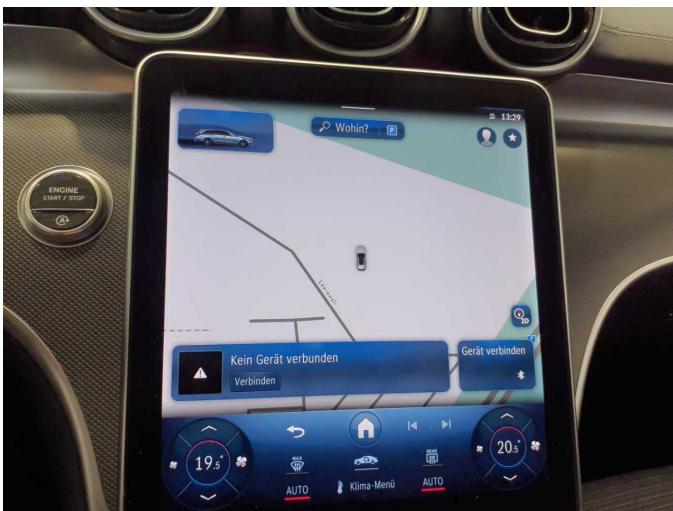


Figure 15: Navigation



Figure 16: Misc.



Figure 17: Misc.



Figure 18: Misc.



Figure 19: Misc.



Figure 20: Misc.



Figure 21: Misc.



Figure 22: Misc.



Figure 23: Misc.



Figure 24: Misc.



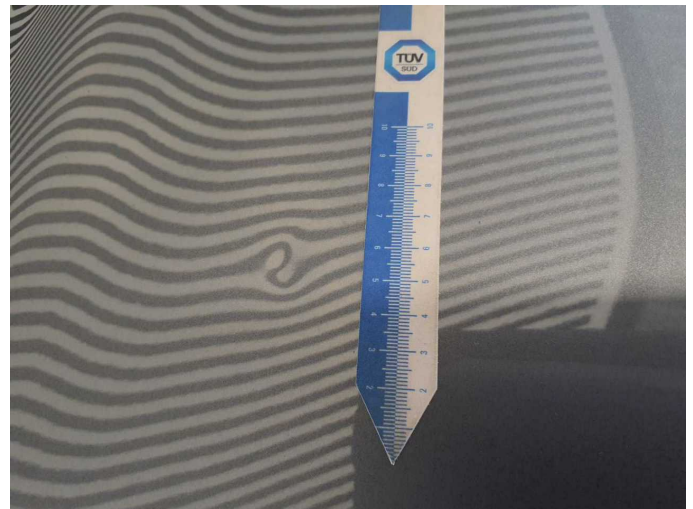
Figure 25: Misc.



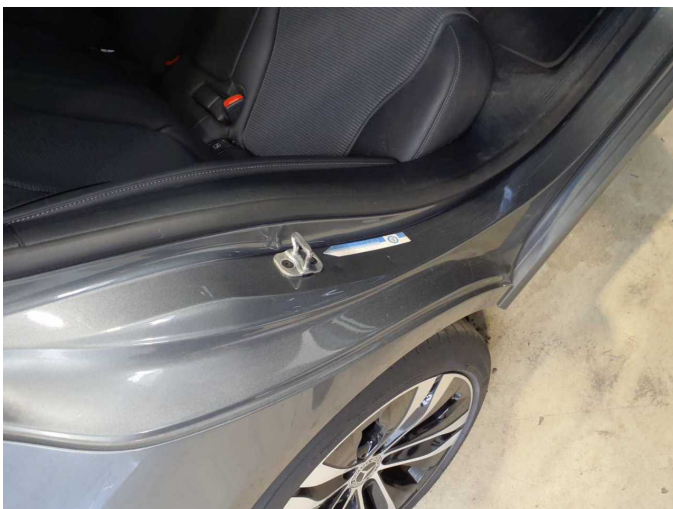
Figure 26: Misc.



Damage 3: Bonnet: Bonnet - dent(s) - Smooth repair work



Damage 3: Bonnet: Bonnet - dent(s) - Smooth repair work



Damage 4: Side panel - rear right side: Sill - Dent / paintcoat damage - Smart repair



Damage 4: Side panel - rear right side: Sill - Dent / paintcoat damage - Smart repair



**Damage 5:** Sill - left side: Sill - Scratch(es) - Smart repair



**Damage 5:** Sill - left side: Sill - Scratch(es) - Smart repair



**Damage 5:** Sill - left side: Sill - Scratch(es) - Smart repair



**Damage 5:** Sill - left side: Sill - Scratch(es) - Smart repair



**Damage 6:** Wheel / tyres: Tyre - rear right side (nicht fahrbereit) - Porous / cracked - Replace



**Damage 6:** Wheel / tyres: Tyre - rear right side (nicht fahrbereit) - Porous / cracked - Replace



**Damage 7:** Wheel / tyres: Alloy rim - rear right side - Scratch(es) - Loss in value



**Damage 7:** Wheel / tyres: Alloy rim - rear right side - Scratch(es) - Loss in value



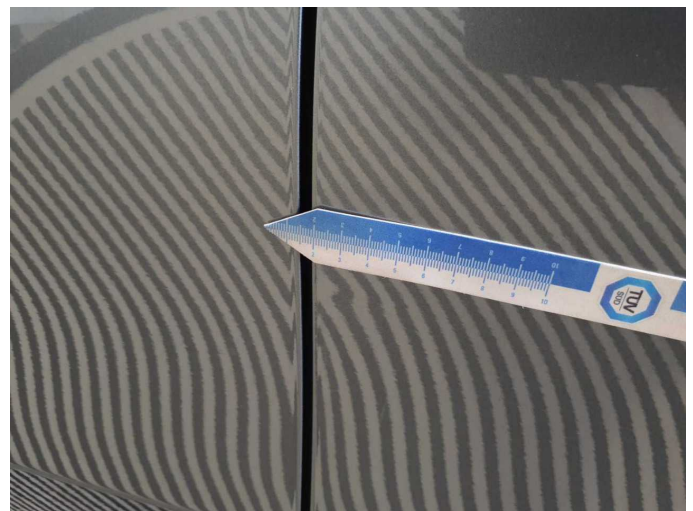
**Damage 7:** Wheel / tyres: Alloy rim - rear right side - Scratch(es) - Loss in value



**Damage 8:** Door - rear left side: Door - Dent / paintcoat damage - Repair and paint



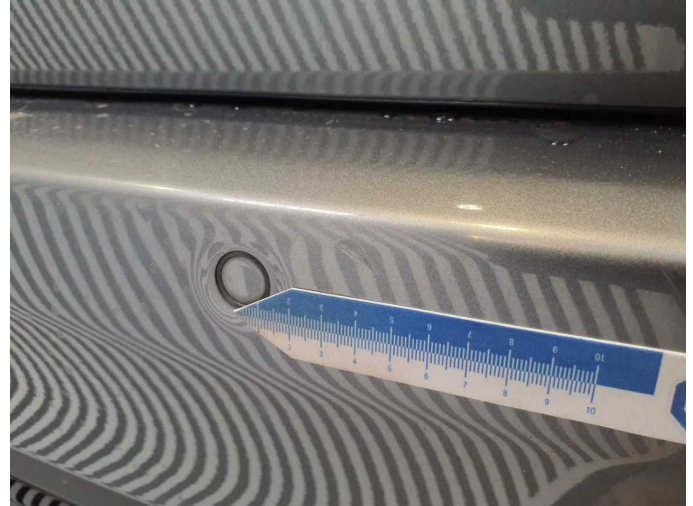
**Damage 8:** Door - rear left side: Door - Dent / paintcoat damage - Repair and paint



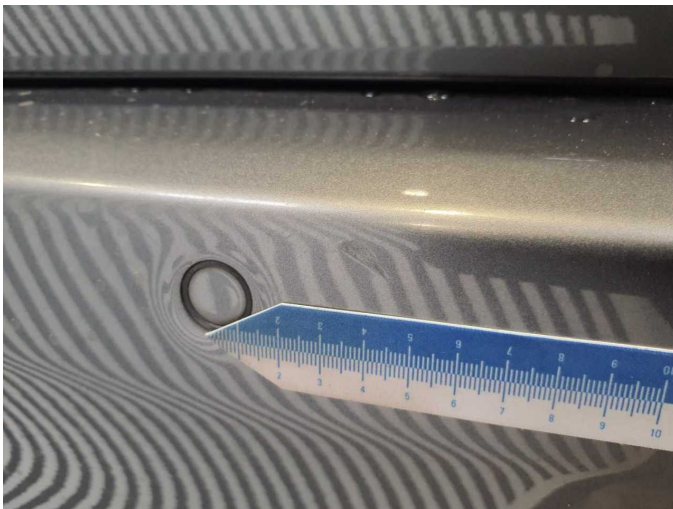
**Damage 8:** Door - rear left side: Door - Dent / paintcoat damage - Repair and paint



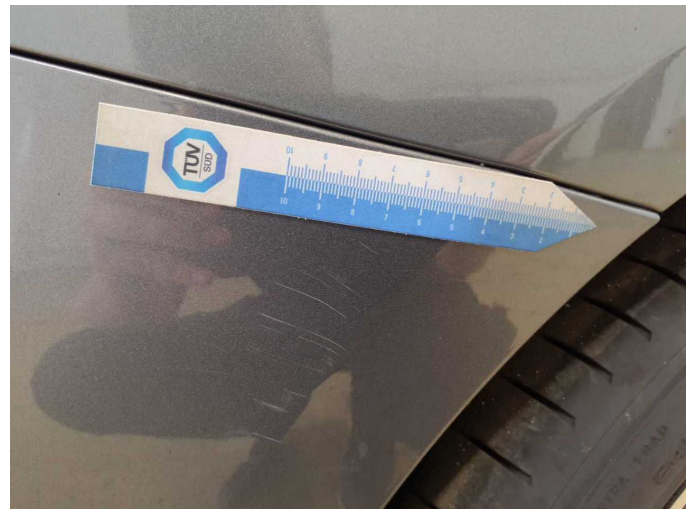
**Damage 9:** Rear bumper: Rear bumper (Zusätzlich Kratzer Blende und Spoiler) - Dent / paintcoat damage - Repair and paint



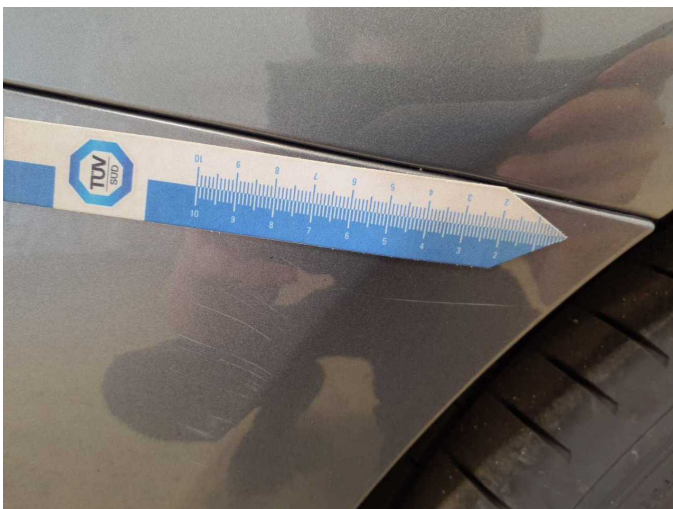
**Damage 9:** Rear bumper: Rear bumper (Zusätzlich Kratzer Blende und Spoiler) - Dent / paintcoat damage - Repair and paint



**Damage 9:** Rear bumper: Rear bumper (Zusätzlich Kratzer Blende und Spoiler) - Dent / paintcoat damage - Repair and paint



**Damage 9:** Rear bumper: Rear bumper (Zusätzlich Kratzer Blende und Spoiler) - Dent / paintcoat damage - Repair and paint



**Damage 9:** Rear bumper: Rear bumper (Zusätzlich Kratzer Blende und Spoiler) - Dent / paintcoat damage - Repair and paint



**Damage 9:** Rear bumper: Rear bumper (Zusätzlich Kratzer Blende und Spoiler) - Dent / paintcoat damage - Repair and paint



**Damage 9:** Rear bumper: Rear bumper (Zusätzlich Kratzer Blende und Spoiler) - Dent / paintcoat damage - Repair and paint