

## Expertise

Protocol number: 45872899  
Order No. / Reference: 26412481  
Inspection date: 10 Jun 2026

Manufacturer: Peugeot

Model: 308 SW BlueHDi 130 EAT8 Allure Pack

VIN: VR3FCYHZTNY646022



### Vehicle details

#### Manufacturer / Type / Model / Equipment

Peugeot 308 SW BlueHDi 130 EAT8 Allure Pack

**Vehicle Identification number** VR3FCYHZTNY646022

**Mileage (Read)** 56,027 km

**First registration** 17 Apr 2023

**Number of holders** 1

**Power / Engine displacement** 96 kw / 1,499 ccm

**Fuel type / Cylinder** Diesel / 4

**Gearbox / Number of gears** Automatic / 8

**Type of drive** Front drive

**Type of vehicle** Station wagon

**Colour / colour code** TYPE HABILLAGE  
EXTERIEUR PLATE  
STANDARD

**Doors / Seats** 5 / 5

**Upholstery type** Cloth

**Colour of upholstery** Black-Grey

**Vehicle with smoke odor** no



**Vehicle details**

|  |                              |                                |  |
|--|------------------------------|--------------------------------|--|
| <b>Maintenance booklet / proof</b>               | digital proof / complete     | <b>Next maintenance in</b>     | 23,200 km  |
| <b>Last service on / at</b>                      | 04/2026 at 54,997 km         |                                |  |
| <b>Key is / should be</b>                        | 2 / 2                        | <b>FZG documents</b>           | ZB#2 (B) was available (copy), ZB#1 (S) was not available. |
|  |                              | <b>Letter No.</b>              | GG043245   |
| <b>Previous damage / Accident</b>                | None detectable              | <b>Repainting</b>              | None detectable  |
| <b>Inspection conditions</b>                     | sufficient                   | <b>Lifting equipment / pit</b> | No   |
| <b>Test drive</b>                                | Not performed                | <b>Engine function test</b>    | Performed  |
| <b>Manufacturer key number/ type code number</b> | 1889 / AEI 00038             |                                |  |
| <b>Emission standard</b>                         | EURO6;WLTP;AP;PI/CI; M, N1 I | <b>fine dust sticker</b>       |  |
| <b>Permitted total weight</b>                    | 1,950 kg                     | <b>Empty weight</b>            |  |

**Tyres**

**Mounted tyres**

| #  | Tyre size      | Type of tyre                | Manufacturer | Tread depth |
|----|----------------|-----------------------------|--------------|-------------|
| 1) | 225/45 R17 94V | Summer tyres on Light alloy | Michelin     | 5mm / 5mm   |
| 2) | 225/45 R17 94V | Summer tyres on Light alloy | Michelin     | 5mm / 5mm   |

**Additional tyres**

| #  | Tyre size      | Type of tyre                | Manufacturer | Tread depth |
|----|----------------|-----------------------------|--------------|-------------|
| 1) | 205/55 R16 91H | Winter tyres on Light alloy | Goodyear     | 6mm / 6mm   |
| 2) | 205/55 R16 91H | Winter tyres on Light alloy | Goodyear     | 7mm / 7mm   |

**Replacement**

| Typ | Tyre size | Type of tyre            | Manufacturer | Tread depth |
|-----|-----------|-------------------------|--------------|-------------|
|     | Tirefit   | Expiration date 06/2028 |              |             |

**Legend: Tread depth information for the left tire is listed first, for the right tire it is listed second on the axle in the direction of travel.**



## Equipment

### Standard equipment

- Storage compartment: Illuminated glove compartment
- Active Safety Brake
- Airbags (6)
- Exterior mirror caps in Perla Nera Black
- Turn signals with lane change indicator function
- third brake light
- Digital instrument cluster with high-resolution 10" screen, adjustable and customizable
- Eco-LED headlights
- Electronic Stability Program (ESP)
- Electric windows, front and rear
- electric parking brake
- Front collision warning
- luggage compartment roller blind
- Transmission: 8-speed automatic transmission EAT8
- Heated rear window
- Rear apron in black
- Interior mirror automatically dimming
- Keyless system
- Automatic climate control (2-zone), with activated carbon filter
- LED ceiling lighting at the front
- LED daytime running lights
- Steering wheel: Leather steering wheel with paddle shifters
- Mirror Screen
- front center armrest
- Multi-collision brake
- Emergency brake assist with automatic activation of the hazard warning lights
- Peugeot i-Toggles
- Rain sensor
- Wheels: Calgary 17" alloy wheels, two-tone
- Reversing camera with 180° surround view
- Electric power steering
- Seats: Passenger seat height adjustable
- Seats: Manual lumbar support for driver
- Seats: Rear seats
- Seats: Front seats
- 12-volt socket
- Doors lock automatically when driving off
- Traffic sign recognition
- Central locking system, activatable from inside via remote control
- ABS (Anti-lock Braking System) with electronic brake force distribution
- Electrically adjustable, heated and folding exterior mirrors
- Hill start assist
- On-board computer
- Decorative fabric inserts "Texa" for door panels and dashboard
- Tachometer
- Rear parking aid, acoustic and visual
- Driving mode selector (Sport - Normal - Eco)
- High beam assist
- Follow-me-home function (automatic)
- Laminated glass windshield, noise-reducing
- Cruise control system with speed limiter
- Cup holder in the center console
- rear window wiper
- Infotainment system: PEUGEOT i-Connect Advanced
- Map pockets on the front seatbacks
- Child safety lock at the rear
- Paint finish: Metallic Avatar Blue
- LED lighting in the front footwell
- LED taillights
- Steering wheel: Small multifunction leather steering wheel, flattened at the top and bottom.
- light sensor
- Armrest - centre, rear
- Multifunctional touchscreen with 10" HD color display
- Fatigue warning
- Particulate filter: FAP diesel particulate filter
- Break warning
- Upholstery: Fabric/faux leather
- Tire pressure monitoring system
- Wheels: Tire repair kit (compressor + tire sealant spray)
- Side windows in the second row and rear window are more heavily tinted.
- Seats: Driver's seat height adjustable
- Seats: Rear bench seat and backrest split 40/20/40, foldable
- Lane keeping assist with steering intervention
- Stop&Start automatic
- Chrome-plated decorative exhaust tailpipes
- Immobiliser
- Decorative trim in high-gloss black on the side windows
- Adjustable intermediate loading shelf



### Extra equipment

- Detachable towbar (with removable ball head without tools)
- luggage compartment partition net
- Paint finish: Solid
- Seats: Heated front seats
- Keyless System Plus (keyless access and start system)
- Package: Drive Assist Package (Active Safety Brake Plus - Rear Cross Traffic Alert - Adaptive Cruise Control (ACC), including Stop & Go function and recognition of stop signs, one-way street signs and start/end of no-overtaking zones - Blind Spot Assist with long range up to 75 meters in reverse)

### Brief expert findings

|                      |   |
|----------------------|---|
| Documents submitted  | At the time of the inspection, the vehicle registration certificate Part 2 (title) was available, but the vehicle registration certificate Part 1 (document) was not. (Copy)  |
| VIN comparison       | The vehicle identification number (VIN) was read from the vehicle and its conformity with the submitted documents was confirmed by the undersigned during the inspection.   |
| Inspection           | The inspection conditions were sufficient for the assessment of the vehicle.<br>No lifting equipment or pit was available for inspecting the vehicle. Therefore, inspection of the vehicle's underside was only possible to a limited extent. |
| Test drive           | No test drive/shunting maneuver was carried out during the inspection of the vehicle.   |
| Engine function test | An engine test run was performed.   |

### Value reducing factors

| No. | Component group        | Description                                  |
|-----|------------------------|--|
| 1   | Misc.                  | Main inspection - No evidence - No deduction |
| 2   | Door - rear right side | Door - dent(s) - Smooth repair work          |
| 3   | Rear bumper            | Rear bumper - Scratched - Paint              |

### Wear and tear

| No. | Component group | Description                               |
|-----|-----------------|---|
| 1   | Front bumper    | Front bumper - Stone chips - No deduction |
| 2   | Bonnet          | Bonnet - Stone chips - No deduction       |
| 3   | Vehicle glazing | Windscreen - Stone chips - No deduction   |
| 4   | Interior        | Interior - Soiled - No deduction          |

The vehicle shows signs of wear and tear commensurate with its age and use.

### Order/Scope of Order

An order was placed to prepare a sales report for the described vehicle. This report includes the following:

- Description of key vehicle information
- Documentation of equipment features  
(*Delivery by third-party service providers*)
- Documentation of damage, defects, missing parts
- Documentation of prior damage, unrepaired prior damage, repainting
- A brief visual or functional inspection of the equipment details, if possible.  
(*Functional testing of driver assistance systems is not included in the scope of services!*)
- a photographic documentation of the vehicle



## Basis for the order

This product is based on the guidelines for vehicle returns and valuations published by Alphabet Fleet GmbH. The expert makes the specific findings in each individual case objectively, within the framework of the prescribed standards, based on their own expertise.

The vehicle inspection takes place in a fully assembled, unassembled state.

Damage or defects that can only be detected during disassembly/diagnostic work or through further investigation remain within the realm of prognostic risk. An increased risk exists due to concealed defects caused by fraudulent misrepresentation and which were not identifiable by the expert.

Damage or defects resulting from normal use or wear and tear of the vehicle will be accepted in accordance with the applicable standard.

There was no explicit identification or monetary consideration of the expected features within the product.

Features which, in their nature and extent, slightly exceed normal use but do not constitute unacceptable damage, will be documented and indicated as signs of wear, if applicable.

Damage or defects that, according to the applicable standard, can no longer be attributed to normal use or wear and tear are listed under "Value Reducing Factors" in the product description.

Depending on the product specification, a monetary ID can be provided. If this takes place, the costs can be 100% d or pro rata depending on the vehicle's age and mileage.

## Previous damages

No apparent prior damage that had been repaired could be found on the vehicle.



Figure 1: Diagonal front (left)



Figure 2: Diagonal front (right)



Figure 3: Diagonal rear (left)



Figure 4: Diagonal rear (right)

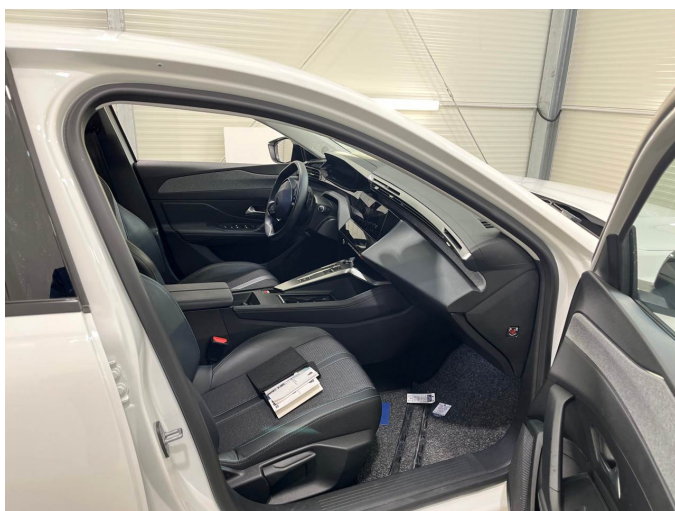


Figure 5: Interior - front



Figure 6: Interior - rear



Figure 7: Instrument cluster



Figure 8: Instrument panel



Figure 9: Interior 360° view



Figure 10: Cargo area

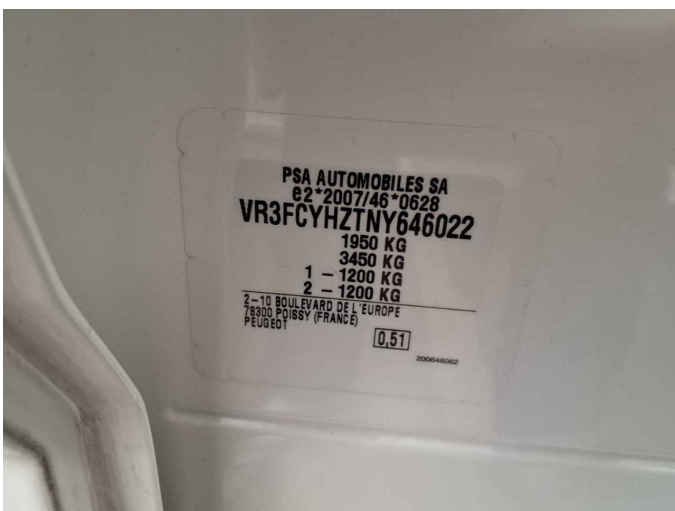


Figure 11: VIN



Figure 12: Mounted tyres



Figure 13: Documents



Figure 14: Documents



Figure 15: Additional tyres



Figure 16: Navigation



Figure 17: Misc.

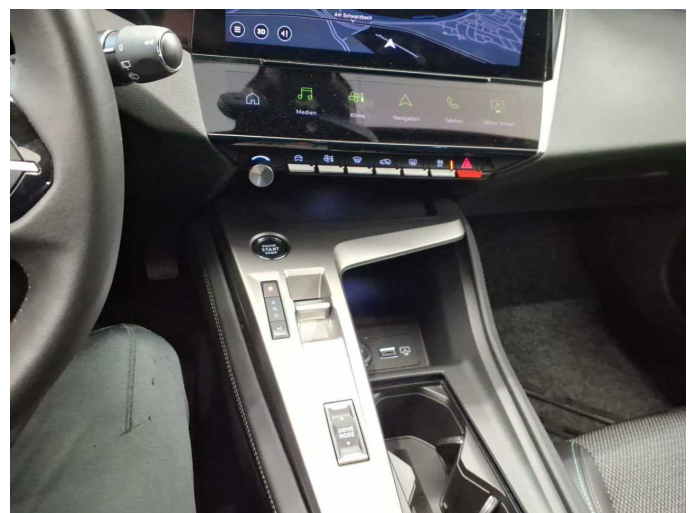


Figure 18: Misc.



Figure 19: Misc.



Figure 20: Misc.



Figure 21: Misc.



Figure 22: Misc.

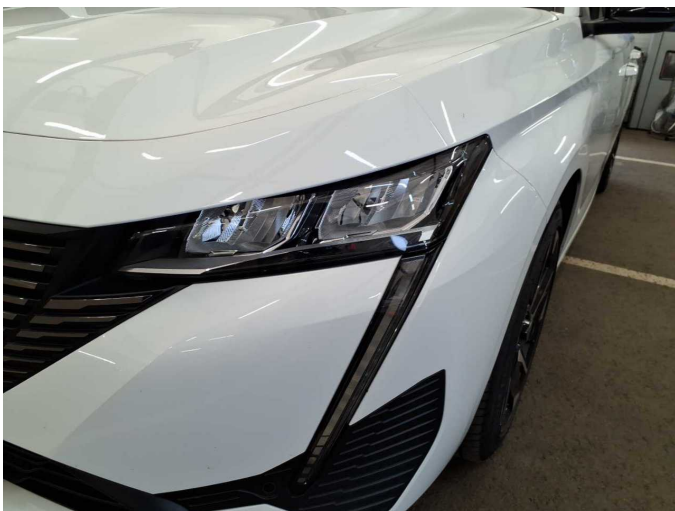


Figure 23: Misc.



Figure 24: Misc.



Figure 25: Misc.



Figure 26: Misc.



Figure 27: Misc.



Figure 28: Misc.



Figure 29: Misc.



Damage 2: Door - rear right side: Door - dent(s) - Smooth repair work



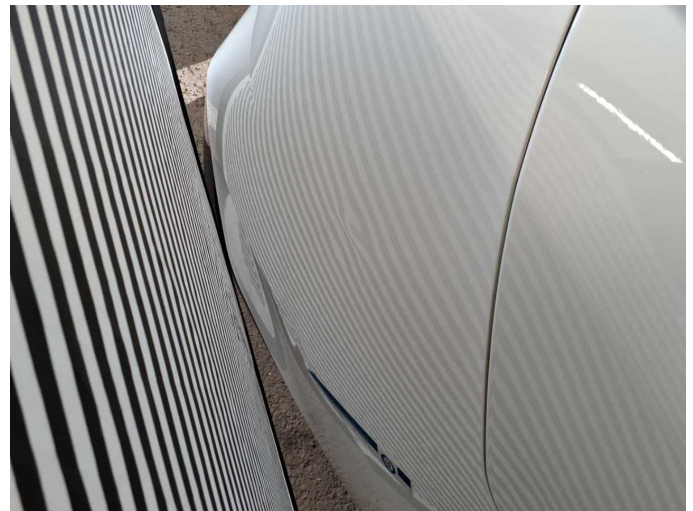
**Damage 2:** Door - rear right side: Door - dent(s) - Smooth repair work



**Damage 3:** Rear bumper: Rear bumper - Scratched - Paint



**Damage 3:** Rear bumper: Rear bumper - Scratched - Paint



**Damage 3:** Rear bumper: Rear bumper - Scratched - Paint



**Damage 3:** Rear bumper: Rear bumper - Scratched - Paint