

Expertise

Protocol number: 46393495
Order No. / Reference: 26642319
Inspection date: 8 Jul 2026

Manufacturer: Ford

Model: Transit Custom 280 L1H1 LKW VA Trend

VIN: WF0RXXTAXRRC85072



Vehicle details

Manufacturer / Type / Model / Equipment

Ford Transit Custom 280 L1H1 LKW VA Trend

Vehicle Identification number WF0RXXTAXRRC85072

Mileage (Read) 12,936 km

First registration 13 Jan 2025

Number of holders 1

Power / Engine displacement 81 kw / 1,996 ccm

Fuel type / Cylinder Diesel / 4

Gearbox / Number of gears Manual / 6

Type of drive Front drive

Type of vehicle Van

Colour / colour code Moondust Silver Metallic

Doors / Seats 4 / 3

Upholstery type Cloth

Colour of upholstery Black-Anthracite



Vehicle details

Maintenance booklet / proof	Available / incomplete	Next maintenance in	29 %
Key is / should be	2 / 2	FZG documents	ZB#2 (B) was available (copy), ZB#1 (S) was not available.
		Letter No.	HB902568
Previous damage / Accident	None detectable	Repainting	None detectable
Inspection conditions	sufficient	Lifting equipment / pit	yes
Test drive	Not performed	Engine function test	Performed
Manufacturer key number/ type code number	8566 / CAJ 00304		
Emission standard	EURO6;WLTP;EA;PI/CI;M, N1, N2	fine dust sticker	
Permitted total weight	2,825 kg	Empty weight	

Tyres

Mounted tyres

#	Tyre size	Type of tyre	Manufacturer	Tread depth
1)	215/65 R16 107T	Summer tyres on Steel rim with wheel cover	Goodyear	5mm / 5mm
2)	215/65 R16 107T	Summer tyres on Steel rim with wheel cover	Goodyear	5mm / 5mm

Replacement

Typ	Tyre size	Type of tyre	Manufacturer	Tread depth
E	215/65 R16 107T C	Summer tyres on Steel	Goodyear	7 mm

Legend: Tread depth information for the left tire is listed first, for the right tire it is listed second on the axle in the direction of travel.



Equipment

Standard equipment

- 2-stage unlocking for passenger compartment and cargo area
- Electrically adjustable and heated exterior mirrors
- Exterior mirror housing made of plastic, black-grey
- roof, flat
- Double rear doors (without windows), with 90°
- Third brake light
- Front electric windows
- Ford Power Start function
- Floor mats: Rubber floor mats, front
- Grab handle, driver and passenger side
- Front interior light
- Fuel tank 55 l
- Steering wheel: Plastic steering wheel
- Emergency call assistant
- Particulate filter: diesel particulate filter
- Tire Pressure Monitoring System (TPMS)
- Wheels: Steel wheels 6.5 J x 16 with 215/65 R 16 tires
- Headlights with LED low beam
- Front mud flaps
- Seat belts
- Front and rear bumpers partially painted in body color
- Plastic door handles, black-grey
- Lashing eyes 6
- Thermal insulation glazing, light tint, complete

Extra equipment

- DPF regenerator, manual
- 2-zone automatic climate control (with automatic temperature control, separately adjustable for driver and passenger side - auxiliary heater, electric)
- Cargo area floor made of hardwood 2 (with anti-slip coating)
- Package: Technology Package 5 (Exterior mirrors with indicators, electrically adjustable, heated and folding; audio system; 13" multifunction display; Ford SYNC 4 including navigation; Blind Spot Assist including CTA; Rear Cross Traffic Alert; Pre-Collision Assist, camera and radar-based; Driver Alert; Wrong-Way Warning; Lane Departure Warning including Lane Keeping Assist and Lane Change Assist; Traffic Sign Recognition; Front/Rear Parking Sensors; Adaptive Cruise Control; Intelligent Speed Limiter; Rearview Camera; Sensico Leather-Look Steering Wheel; Electronic Safety and ESP)

- Driver's side airbag
- Anti-lock braking system with electronic brake force distribution (EBD)
- Battery: H7 AGM single battery
- roof console
- Tachometer
- Electronic Safety and Stability Program (ESP)
- Electronic parking brake
- Heated windshield
- Transmission: 6-speed transmission
- Lockable glove compartment with lid
- Front headrests (3)
- Cargo area lighting (LED)
- Center console, small
- Package: Technology Package 2 (Trend)
- Radio accessories: 4 speakers
- Wheels: Wheel trims full surface
- Windscreen wipers with rain sensor
- Rear mud flaps
- Power steering
- Start-stop system
- Partition wall (metal) without window
- circulating air heating
- Immobiliser
- Central locking with remote control

- Heated fixed rear window (interior mirror - partition with window - rear window wiper)
- Paint finish: Metallic
- Cargo area lighting (LED) (extra bright)
- LED headlights (LED high beam - LED low beam - LED daytime running lights incl. integrated LED turn signals at the front - static cornering lights - high beam assist)
- Wheels: Spare wheel 16" steel wheel
- Sliding door, right and left
- Half-height side wall cladding
- Seats: Seat package 16A (driver's seat, 4-way manually adjustable, including lumbar support and adjustable inner armrest - fixed double passenger seat with pass-through - heated driver's seat - heated passenger seat (outer seat) - fold-out tray on the passenger seat - passenger airbag - side airbags, right and left - front head and shoulder airbags - Plus Style fabric upholstery, center section in Black Onyx, rest in Ebony)



Brief expert findings

Documents submitted	At the time of the inspection, the vehicle registration certificate Part 2 (title) was available, but the vehicle registration certificate Part 1 (document) was not. (Copy)
VIN comparison	The vehicle identification number (VIN) was read from the vehicle and its conformity with the submitted documents was confirmed by the undersigned during the inspection.
Inspection	The inspection conditions were sufficient for the assessment of the vehicle. Lifting equipment and/or a pit were available for examining the vehicle.
Test drive	No test drive/shunting maneuver was carried out during the inspection of the vehicle.
Engine function test	An engine test run was performed.

Value reducing factors

No.	Component group	Description
1	Sliding door - left side	Sliding door - Dent / paintcoat damage - Repair and paint

Wear and tear

No.	Component group	Description
1	Rear bumper	Rear bumper (unpainted) - Scratch(es) - No deduction
2	Interior	Interior - Scratch(es) - No deduction
3	Bonnet	Bonnet - Stone chips - No deduction
4	Front bumper	Front bumper - Stone chips - No deduction
5	Vehicle glazing	Windscreen - Stone chips - No deduction

The vehicle shows signs of wear and tear commensurate with its age and use.

Order/Scope of Order

An order was placed to prepare a sales report for the described vehicle. This report includes the following:

- Description of key vehicle information
- Documentation of equipment features
(*Delivery by third-party service providers*)
- Documentation of damage, defects, missing parts
- Documentation of prior damage, unrepaired prior damage, repainting
- A brief visual or functional inspection of the equipment details, if possible.
(*Functional testing of driver assistance systems is not included in the scope of services!*)
- a photographic documentation of the vehicle



Basis for the order

This product is based on the guidelines for vehicle returns and valuations of light commercial vehicles published by Alphabet Fleet Management GmbH. The expert makes the specific findings in each individual case objectively, within the framework of the prescribed standards, based on their own expertise.

The vehicle inspection takes place in a fully assembled, unassembled state.

Damage or defects that can only be detected during disassembly/diagnostic work or through further investigation remain within the realm of prognostic risk. An increased risk exists due to concealed defects caused by fraudulent misrepresentation and which were not identifiable by the expert.

Damage or defects resulting from normal use or wear and tear of the vehicle will be accepted in accordance with the applicable standard.

There was no explicit identification or monetary consideration of the expected features within the product.

Features which, in their nature and extent, slightly exceed normal use but do not constitute unacceptable damage, will be documented and indicated as signs of wear, if applicable.

Damage or defects that, according to the applicable standard, can no longer be attributed to normal use or wear and tear are listed under "Value Reducing Factors" in the product description.

Depending on the product specification, a monetary ID can be provided. If this takes place, the costs can be 100% d or pro rata depending on the vehicle's age and mileage.

Previous damages

No apparent prior damage that had been repaired could be found on the vehicle.



Figure 1: Diagonal front (left)



Figure 2: Diagonal front (right)



Figure 3: Diagonal rear (left)



Figure 4: Diagonal rear (right)



Figure 5: Interior - front



Figure 6: Interior - rear



Figure 7: Instrument cluster



Figure 8: Instrument panel



Figure 9: Interior 360° view



Figure 10: Cargo area



Figure 11: VIN



Figure 12: Mounted tyres



Figure 13: Documents

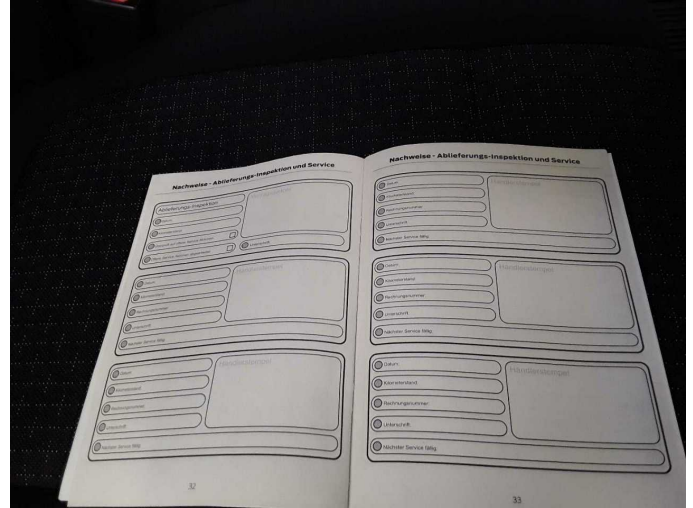


Figure 14: Documents



Figure 15: Navigation



Figure 16: Misc.



Figure 17: Misc.



Figure 18: Misc.



Figure 19: Misc.



Figure 20: Misc.

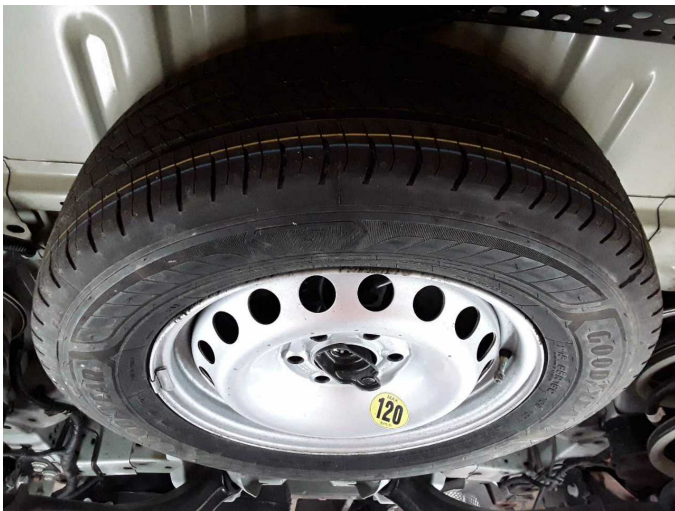


Figure 21: Misc.



Figure 22: Misc.



Figure 23: Misc.



Figure 24: Misc.



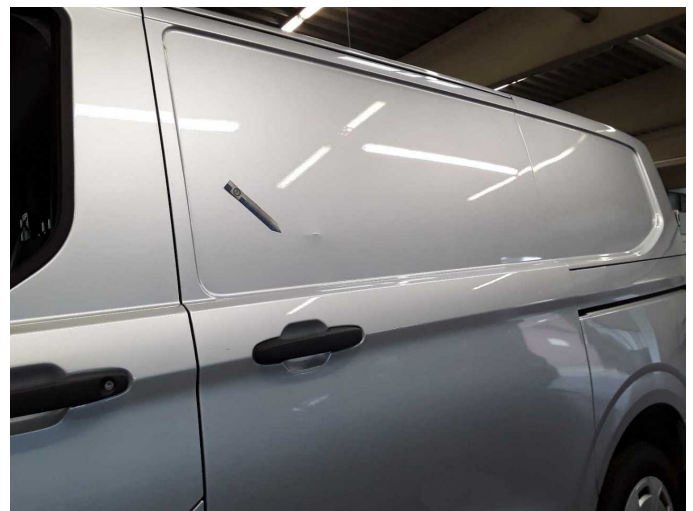
Figure 25: Misc.



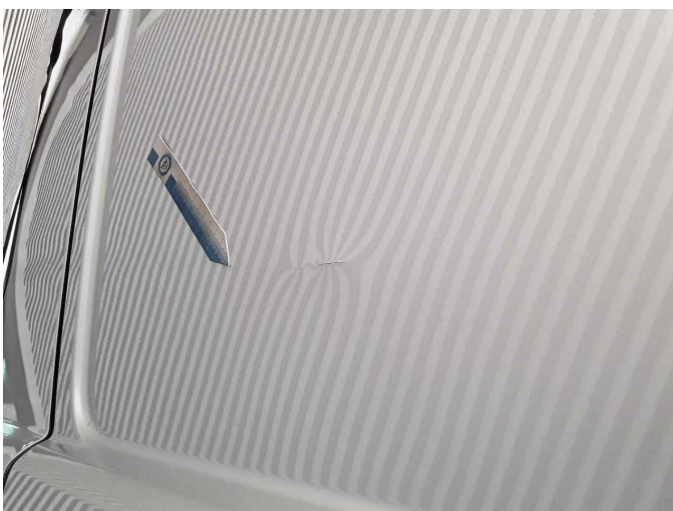
Figure 26: Misc.



Figure 27: Misc.



Damage 1: Sliding door - left side: Sliding door - Dent / paintcoat damage
- Repair and paint



Damage 1: Sliding door - left side: Sliding door - Dent / paintcoat damage
- Repair and paint



Damage 1: Sliding door - left side: Sliding door - Dent / paintcoat damage
- Repair and paint