

## Expertise

Protocol number: 46295643  
Order No. / Reference: 26642073  
Inspection date: 30 Jun 2026

Manufacturer: Ford

Model: Focus Turnier 1.5 EcoBlue Start-Stopp-System Aut. TITANIUM

VIN: WF0PXXGCHPPL03194



### Vehicle details

#### Manufacturer / Type / Model / Equipment

Ford Focus Turnier 1.5 EcoBlue Start-Stopp-System Aut. TITANIUM

**Vehicle Identification number** WF0PXXGCHPPL03194

**Mileage (Read)** 135,432 km

**First registration** 18 Sept 2023

**Number of holders** 1

**Power / Engine displacement** 85 kw / 1,499 ccm

**Fuel type / Cylinder** Diesel / 4

**Gearbox / Number of gears** Automatic / 8

**Type of drive** Front drive

**Type of vehicle** Station wagon

**Colour / colour code** Silver Metallic

**Doors / Seats** 5 / 5

**Upholstery type** Cloth

**Colour of upholstery** Black



## Vehicle details

<b>Maintenance booklet / proof</b>	digital proof / complete	<b>Next maintenance in</b>	53 %
<b>Last service on / at</b>	02/2026 at 121,251 km		
<b>Key is / should be</b>	2 / 2	<b>FZG documents</b>	ZB#2 (B) was available (copy), ZB#1 (S) was not available.
		<b>Letter No.</b>	GT924753
<b>Previous damage / Accident</b>	None detectable	<b>Repainting</b>	Detectable
<b>Inspection conditions</b>	sufficient	<b>Lifting equipment / pit</b>	No
<b>Test drive</b>	Not performed	<b>Engine function test</b>	Performed
<b>Manufacturer key number/ type code number</b>	8566 / BYE 00002		
<b>Emission standard</b>	EURO 6	<b>fine dust sticker</b>	
<b>Permitted total weight</b>	2,035 kg	<b>Empty weight</b>	

## Tyres

**Mounted tyres**

#	Tyre size	Type of tyre	Manufacturer	Tread depth
1)	205/60 R16 92H	Summer tyres on Light alloy	Continental	6mm / 6mm
2)	205/60 R16 92H	Summer tyres on Light alloy	Continental	6mm / 6mm

**Additional tyres**

#	Tyre size	Type of tyre	Manufacturer	Tread depth
1)	205/60 R16 92H	Winter tyres on Light alloy	Goodyear	4mm / 4mm
2)	205/60 R16 92H	Winter tyres on Light alloy	Pirelli	5mm / 5mm

**Replacement**

Typ	Tyre size	Type of tyre	Manufacturer	Tread depth
	Tirefit	Expiration date 06/2027		

**Legend: Tread depth information for the left tire is listed first, for the right tire it is listed second on the axle in the direction of travel.**



## Equipment

### Equipment

- Klimaautomatik

|



## Standard equipment

- Airbag: Passenger airbag deactivation
- Exterior mirrors painted in body color, electrically adjustable, heated and foldable
- Attachment points behind the second row of seats for mounting the safety partition net
- Tires: 6.5 J x 16 design wheels (4) with 205/60 R16 tires
- Hill start assist
- Fabric headliner
- Roof spoiler painted in car color
- Tachometer
- Electronic Shifter
- Electronic Stability Program (ESP) (with Emergency Brake Assist (EBA) and Traction Control System (TCS))
- Lane keeping assist including lane keeping assist
- Electric front and rear windows (with all-around closing function)
- Ford Power Start function (keyless start)
- FordPass Connect including live traffic information (Additionally for PowerShift automatic transmission: Ford Mobile Remote remote start function)
- Speed limiter (Intelligent speed limiter with speed limit display)
- Transmission: 8-speed automatic transmission
- Illuminated glove compartment
- rear window wiper
- Interior lighting with LED technology (front and rear and map reading lights at the front)
- Intelligent safety system (front airbag for driver and front passenger - front and rear head and shoulder airbags - side airbag for driver and front passenger - seat belt tensioners and force limiters in the front and on the outer seats of the 2nd row - 3-point seat belts on all seats, height-adjustable in the front - safety pedal assembly)
- Headrests: 2 front and 3 rear, height adjustable
- Paint finish: Solid
- LED headlights
- Steering wheel: 3-spoke design
- Steering wheel: 3-spoke design steering wheel (in Sensico leather look)
- Adjustable steering column
- Make-up mirrors in driver and passenger sun visors
- Center console "Premium" front
- MyKey key system (individually programmable second key)
- Navigation: Ford SYNC 4 including Ford navigation system with AppLink, 13.2" touchscreen and DAB/DAB+
- Emergency call assistant
- Otto particulate filter
- Front and rear parking pilot system
- Upholstery: Cloth
- Post-Collision Assist
- Anti-lock braking system (ABS) with electronic brake force distribution (EBD)
- Exterior mirrors painted in body color, electrically adjustable, heated and foldable (with integrated turn signals)
- Tires: 6.5 J x 16 design wheels (4) with 205/60 R16 tires (in 10-spoke design, in black-silver)
- Roof rails, aluminum
- Diesel particulate filter (DPF)
- Third brake light
- Electronic Safety and Stability Program (ESP)
- Driver information system with on-board computer, color (10.7 cm screen diagonal)
- Electric windows front and rear
- Electric parking brake with auto-hold function
- Ford Power Start function
- FordPass Connect including live traffic information
- Luggage compartment cover
- Luggage compartment lighting
- Speed limiter
- Cruise control
- Transmission: 6-speed manual transmission
- Rubber mats (wet area with standard rubber mat)
- Back window, heater
- Interior lighting with LED technology
- Interior mirror, automatically dimming
- Intelligent security system
- Isofix bracket
- Isofix mounting (including top tether anchor points on the outer seats of the 2nd row)
- Air conditioning with automatic temperature control
- Air conditioning with automatic temperature control (separately adjustable for driver and passenger side (2-zone automatic climate control))
- LED taillights
- LED headlights (LED low beam - LED high beam - LED daytime running lights incl. integrated LED turn signals at the front - LED cornering lights, static, incl. integrated LED fog light function and maneuvering light)
- Steering column, adjustable (adjustable in height and reach)
- Front center console "Premium" (sliding armrest - cup holders - storage compartments - 12-volt and USB connection)



- Post-Collision Assist (In the event of a severe collision, which would also deploy the airbag and in which the driver might be incapacitated, this system initiates the braking process. This reduces the risk of colliding with further obstacles and road users after the initial collision. The driver can intervene and operate the accelerator or brake pedal manually throughout the entire process.)
- Tire repair kit
- Tire repair kit (for use at a maximum speed of 80 km/h)
- Gear knob, Sensico in leather look
- Headlight low beam
- Selective driving mode switch
- Electromechanical speed-dependent power steering
- Electro-mechanical speed-dependent power steering (EPAS - Electric Power Assisted Steering)
- Seats: Passenger seat, 2-way adjustable
- Seats: Driver's seat height adjustable (with manually adjustable lumbar support)
- Seats: Front sports seats with enhanced lateral support
- 12-volt power outlet in the luggage compartment
- Trim above the side window, black (trim below the side window, chrome trim)
- Warning system for unfastened seat belts for the 1st and 2nd rows of seats

- Navigation: Ford SYNC 4 including Ford navigation system with AppLink, 13.2" touchscreen and DAB/DAB+ (6 speakers - Amazon Alexa built-in voice assistant - Android Auto and Apple CarPlay - Steering wheel controls - Digital user manual - Bluetooth hands-free calling and audio streaming - USB ports - Voice control for audio and phone - Ford Power-Up software updates - Intelligent route suggestions - Customizable user profiles - Radio player - Audible and visual route guidance, dynamic and cloud-based navigation with advanced traffic information system, lane guidance and road map for Europe)
- Pre-Collision Assist
- Pre-Collision Assist (Forward Alert system with pedestrian and bicycle detection)
- Tire Pressure Monitoring System (TMPS)
- Windscreen wipers with rain sensor (sensitivity adjustable)
- Headlight assistant with day/night sensor
- Selective driving mode switch (including 3 selectable driving modes: Normal, Sport and Eco)
- Seats: Passenger seat height-adjustable, manually (with adjustable lumbar support)
- Seats: Driver's seat height adjustable
- Seats: Rear seat backrest
- Seats: Rear seat backrest (foldable, 60:40 split)
- Start-stop system
- Carpet floor mats in the front
- Variable radiator air intake
- Lashing eyes in the luggage compartment
- Electronic immobilizer
- Central locking with remote control and remote luggage compartment release

### Extra equipment

- Detachable towbar (including ESP trailer stabilization)
- eCall
- Package: Easy Parking
- Package: Winter
- Package: Winter (heated windscreen - heated steering wheel - individually and variably heated front seats)
- Rear view camera
- Safety partition net for luggage compartment

- Swiveling tow bar
- Paint finish: Metallic
- Package: Easy Parking (Active Parking Assist with parking and exiting function (in conjunction with 8-speed automatic transmission including semi-automated vehicle guidance) - Door edge protection - Rearview camera with "Split View" technology)

### Brief expert findings

Documents submitted	At the time of the inspection, the vehicle registration certificate Part 2 (title) was available, but the vehicle registration certificate Part 1 (document) was not. (Copy)
VIN comparison	The vehicle identification number (VIN) was read from the vehicle and its conformity with the submitted documents was confirmed by the undersigned during the inspection.
Inspection	The inspection conditions were sufficient for the assessment of the vehicle. No lifting equipment or pit was available for inspecting the vehicle. Therefore, inspection of the vehicle's underside was only possible to a limited extent.
Test drive	No test drive/shunting maneuver was carried out during the inspection of the vehicle.
Engine function test	An engine test run was performed.



## Value reducing factors

No.	Component group	Description
1	Door - rear right side	Door - dent(s) - Smooth repair work
2	Side panel - rear right side	Side panel - dent(s) - Smooth repair work
3	Boot lid / rear door	Boot lid - dent(s) - Smooth repair work
4	Boot lid / rear door	Boot lid - Glued / labelled - De-glue / neutralise
5	Engine	Engine cover - Damage caused by marten / rodent - Replace
6	Rear bumper	Bumper with Parktronic - Scratch(es) - Paint
7	Bonnet	Bonnet - Scratch(es) - Paint

## Wear and tear

No.	Component group	Description
1	Roof	Roof rail - left side - dent(s) - No deduction
2	Front bumper	Front bumper - Stone chips - No deduction
3	Vehicle glazing	Windscreen - Stone chips - No deduction
4	Boot lid / rear door	Rear spoiler - Scratch(es) - No deduction
5	Roof	Roof - Scratch(es) - Conditioning
6	Door - rear left side	Door - Scratch(es) - Smart repair
7	Door - front left side	Door - Scratch(es) - Smart repair
8	Trim / covers	Floor mats - Broken / torn - No deduction
9	Wheel / tyres	Wheel cover - rear left side - Scratch(es) - No deduction

The vehicle shows signs of wear and tear commensurate with its age and use.

## Missing parts

### Description

Trim / covers - Floor mats (Hinten)

## Repainting

### No. Repainting

1 Door - rear left side, Unprofessionally carried out, Invoice of repair done Non-existent

## Paint coat thickness measurement

Door - rear left side 195 µm |

## Order/Scope of Order

An order was placed to prepare a sales report for the described vehicle. This report includes the following:

- Description of key vehicle information
- Documentation of equipment features  
(*Delivery by third-party service providers*)
- Documentation of damage, defects, missing parts
- Documentation of prior damage, unrepaired prior damage, repainting
- A brief visual or functional inspection of the equipment details, if possible.  
(*Functional testing of driver assistance systems is not included in the scope of services!*)
- a photographic documentation of the vehicle



## Basis for the order

This product is based on the guidelines for vehicle returns and valuations published by Alphabet Fleet GmbH. The expert makes the specific findings in each individual case objectively, within the framework of the prescribed standards, based on their own expertise.

The vehicle inspection takes place in a fully assembled, unassembled state.

Damage or defects that can only be detected during disassembly/diagnostic work or through further investigation remain within the realm of prognostic risk. An increased risk exists due to concealed defects caused by fraudulent misrepresentation and which were not identifiable by the expert.

Damage or defects resulting from normal use or wear and tear of the vehicle will be accepted in accordance with the applicable standard.

There was no explicit identification or monetary consideration of the expected features within the product.

Features which, in their nature and extent, slightly exceed normal use but do not constitute unacceptable damage, will be documented and indicated as signs of wear, if applicable.

Damage or defects that, according to the applicable standard, can no longer be attributed to normal use or wear and tear are listed under "Value Reducing Factors" in the product description.

Depending on the product specification, a monetary ID can be provided. If this takes place, the costs can be 100% d or pro rata depending on the vehicle's age and mileage.

## Previous damages

No apparent prior damage that had been repaired could be found on the vehicle.



Figure 1: Diagonal front (left)



Figure 2: Diagonal front (right)



Figure 3: Diagonal rear (left)



Figure 4: Diagonal rear (right)



Figure 5: Interior - front



Figure 6: Interior - rear



Figure 7: Instrument cluster



Figure 8: Instrument panel



Figure 9: Interior 360° view



Figure 10: Cargo area



Figure 11: VIN



Figure 12: Mounted tyres





Figure 19: Misc.



Figure 20: Misc.



Figure 21: Misc.



Figure 22: Misc.

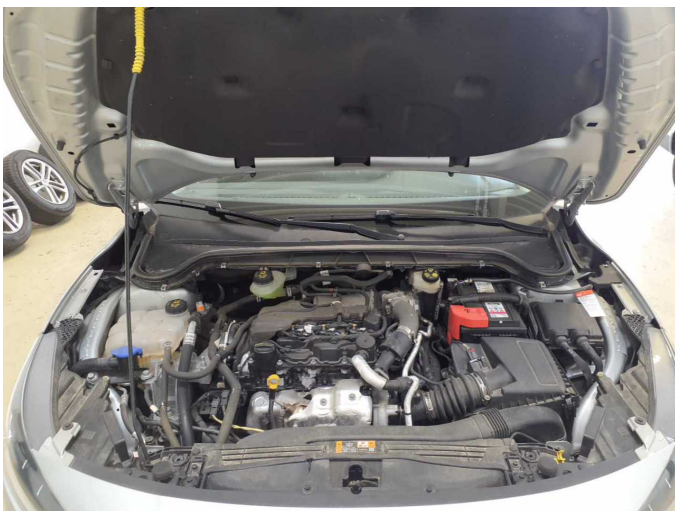


Figure 23: Misc.

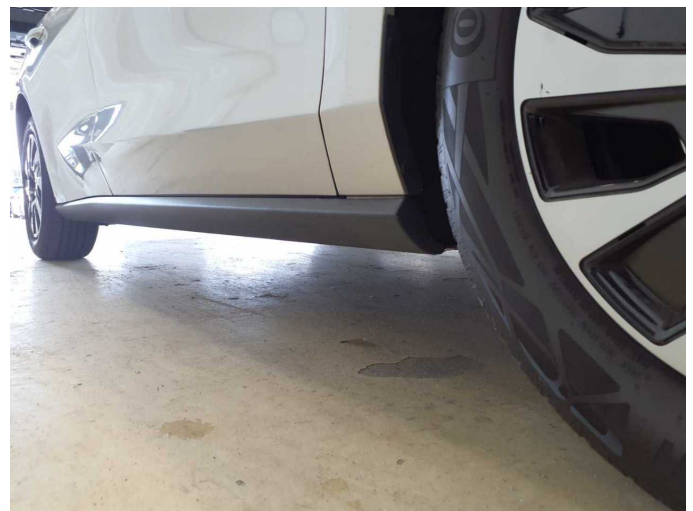


Figure 24: Misc.



Figure 25: Misc.



Figure 26: Misc.



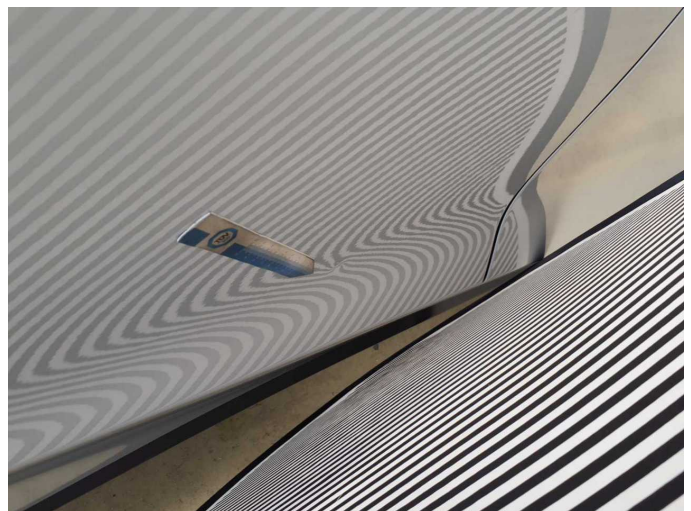
Figure 27: Misc.



Figure 28: Misc.



Damage 1: Door - rear right side: Door - dent(s) - Smooth repair work



Damage 1: Door - rear right side: Door - dent(s) - Smooth repair work



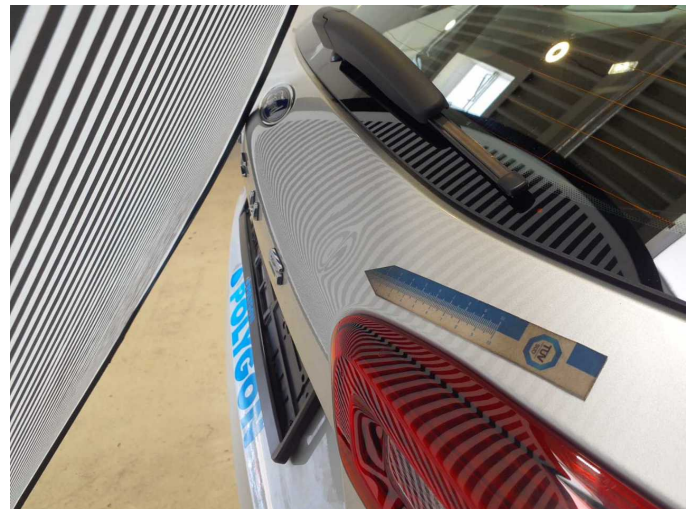
**Damage 2:** Side panel - rear right side: Side panel - dent(s) - Smooth repair work



**Damage 2:** Side panel - rear right side: Side panel - dent(s) - Smooth repair work



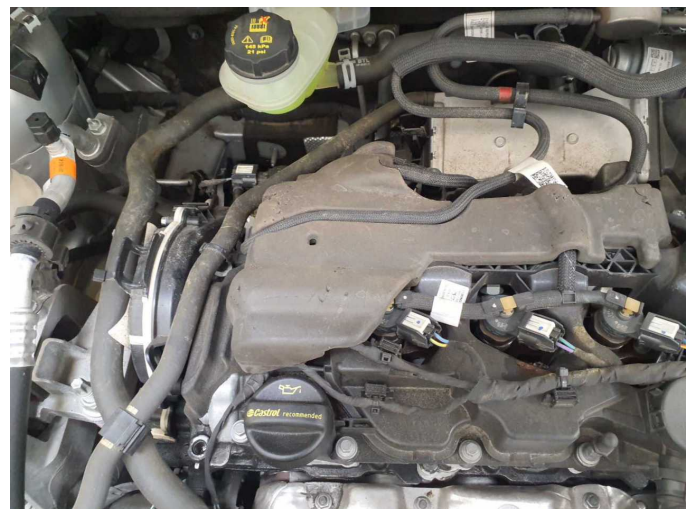
**Damage 3:** Boot lid / rear door: Boot lid - dent(s) - Smooth repair work



**Damage 3:** Boot lid / rear door: Boot lid - dent(s) - Smooth repair work



**Damage 4:** Boot lid / rear door: Boot lid - Glued / labelled - De-glue / neutralise



**Damage 5:** Engine: Engine cover - Damage caused by marten / rodent - Replace



**Damage 6:** Rear bumper: Bumper with Parktronic - Scratch(es) - Paint



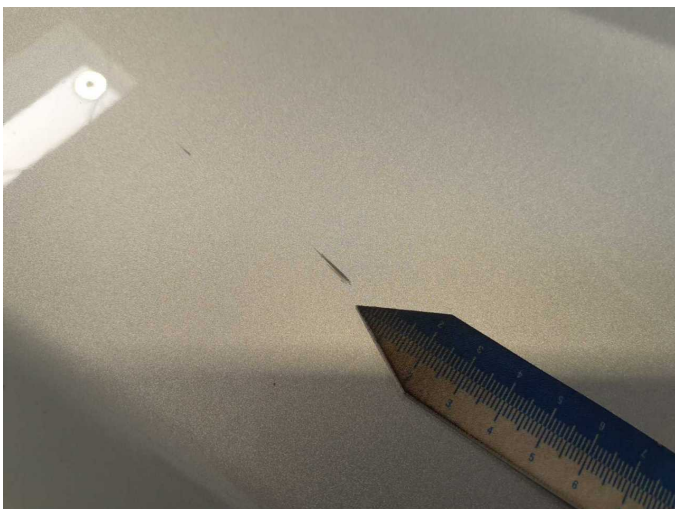
**Damage 6:** Rear bumper: Bumper with Parktronic - Scratch(es) - Paint



**Damage 7:** Bonnet: Bonnet - Scratch(es) - Paint



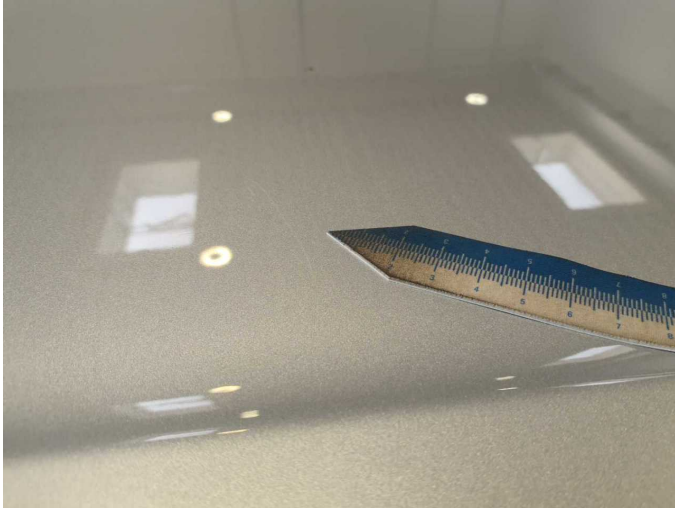
**Damage 7:** Bonnet: Bonnet - Scratch(es) - Paint



**Damage 7:** Bonnet: Bonnet - Scratch(es) - Paint



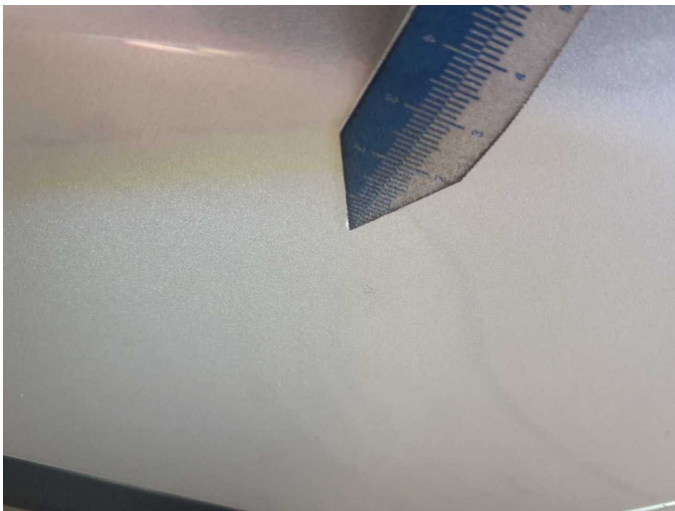
**Wear and tear 5:** Roof: Roof - Scratch(es) - Conditioning



**Wear and tear 5:** Roof: Roof - Scratch(es) - Conditioning



**Wear and tear 6:** Door - rear left side: Door - Scratch(es) - Smart repair



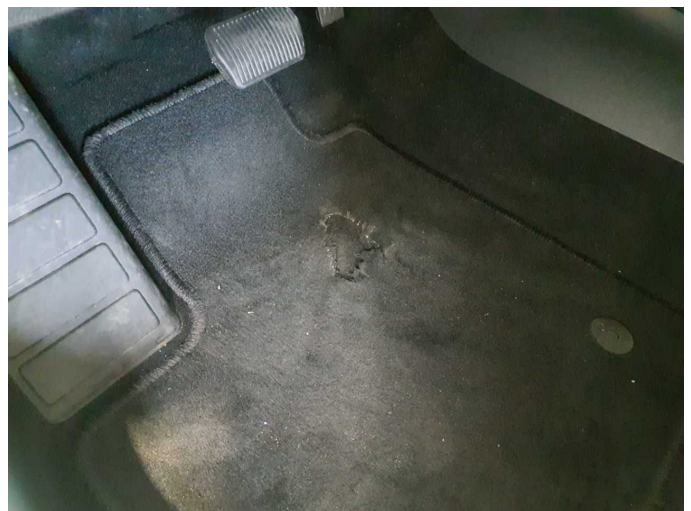
**Wear and tear 6:** Door - rear left side: Door - Scratch(es) - Smart repair



**Wear and tear 7:** Door - front left side: Door - Scratch(es) - Smart repair



**Wear and tear 7:** Door - front left side: Door - Scratch(es) - Smart repair



**Wear and tear 8:** Trim / covers: Floor mats - Broken / torn - No deduction



**Wear and tear 9:** Wheel / tyres: Wheel cover - rear left side - Scratch(es)  
- No deduction



**Wear and tear 9:** Wheel / tyres: Wheel cover - rear left side - Scratch(es)  
- No deduction



**Repainting 1:** Door - rear left side



**Repainting 1:** Door - rear left side