

Expertise

Protocol number: 46285090
Order No. / Reference: 26530376
Inspection date: 1 Jul 2026

Manufacturer: Skoda

Model: Octavia 2.0 TDI DSG Style

VIN: TMBAJ8NX7RY062452



Vehicle details

Manufacturer / Type / Model / Equipment

Skoda Octavia 2.0 TDI DSG Style

Vehicle Identification number TMBAJ8NX7RY062452

Mileage (Read) 173,468 km

First registration 6 Nov 2023

Number of holders 1

Next periodical technical inspection 11/2026
(Report not on hand)

Power / Engine displacement 110 kw / 1,968 ccm

Fuel type / Cylinder Diesel / 4

Gearbox / Number of gears Automatic / 7

Type of drive Front drive

Type of vehicle Saloon car

Colour / colour code Graphit-Grau Metallic

Doors / Seats 5 / 5

Upholstery type Cloth

Colour of upholstery Grey-Black



Vehicle details

Maintenance booklet / proof	digital proof / complete	Next maintenance in	7,800 km
Last service on / at	12/2025 at 151,232 km		
Key is / should be	2 / 2	FZG documents	ZB#2 (B) was available (copy), ZB#1 (S) was not available.
		Letter No.	GV944331
Previous damage / Accident	Detectable	Repainting	Detectable
Inspection conditions	sufficient	Lifting equipment / pit	No
Test drive	Not performed	Engine function test	Performed
Manufacturer key number/ type code number	8004 / AWG 00575		
Emission standard	EURO6;WLTP;AP;PI/CI; M, N1 I	fine dust sticker	
Permitted total weight	1,987 kg	Empty weight	

Tyres

Mounted tyres

#	Tyre size	Type of tyre	Manufacturer	Tread depth
1)	225/45 R18 95Y	Summer tyres on Light alloy	Continental	5mm / 5mm
2)	225/45 R18 91Y	Summer tyres on Light alloy	Bridgestone	6mm / 6mm

Additional tyres

#	Tyre size	Type of tyre	Manufacturer	Tread depth
1)	205/60 R16 92H	Winter tyres on Light alloy	Continental	5mm / 5mm
2)	205/60 R16 92H	Winter tyres on Light alloy	Bridgestone	5mm / 5mm

Replacement

Typ	Tyre size	Type of tyre	Manufacturer	Tread depth
	Tirefit	Expiration date 08/2027		

Legend: Tread depth information for the left tire is listed first, for the right tire it is listed second on the axle in the direction of travel.

TÜV SÜD Auto Partner GmbH
Wiesenring 2
04159 Leipzig

Inspection location
ARS Altmann AG Automobillogistik
Römerstraße 3
64560 Riedstadt



Equipment



Standard equipment

- Storage compartment in the luggage compartment with cargo element
- Airbag for driver and front passenger (passenger airbag can be deactivated)
- Airbag, driver's knee airbag
- Airbag, front side airbags
- Ambient lighting (dashboard, front trim strips and footwell with selectable color climate) in the interior as well as logo projector on the outside)
- Automatically dimming exterior mirror (driver's side)
- Exterior mirrors with memory function (boarding spots in the exterior mirrors as well as memory function and mirror lowering)
- Hill start assist
- Glasses compartment in the headliner
- Decorative strip in silver square with ambient lighting
- Digital Cockpit Plus
- Third brake light
- Electronic transverse differential lock (XDS+)
- Driving profile selection
- Front radar assistant including city emergency braking function and pedestrian and cyclist detection
- Transmission: 7-speed dual-clutch transmission (DSG)
- Green tec: Start/stop system including brake energy recuperation
- ISOFIX preparations on the front passenger seat and the outer rear seats including top tether anchorage
- Climatronic air conditioning (2-zone) (fully automatic, separately adjustable for driver and front passenger, and with anti-allergen filter & activated carbon filter)
- LED taillights in crystal glass look and animated turn signals
- Remote release of the rear seat backrests in the trunk
- Steering wheel: Leather steering wheel with multifunction buttons and paddle shifters (leather steering wheel and gearshift lever with leather elements - infotainment and driver assistance system operation)
- Fatigue detection
- Upholstery: Cloth
- Radio accessories: 2 USB-C ports on the front
- Radio accessories: Bluetooth hands-free system
- Radio accessories: SmartLink (Apple CarPlay - Android Auto)
- Tire pressure monitoring
- Tire mobility kit (tire repair spray incl. compressor)
- Electromechanical power steering
- Seat belts (Three three-point seat belts in the rear)
- Seats: Heated front seats
- Seats: Electrically adjustable front seats with memory function (and boarding spots in the exterior mirrors)
- Seats: Rear seat backrest split 60:40, foldable
- Storage compartments (storage compartments in the front door panels with 1.5l bottle holders, storage compartments in the rear door panels with 0.5l bottle holders, storage compartments in the doors with felt lining)
- Airbag, head airbags
- Airbag: Center airbag front
- Anti-lock braking system (ABS)
- Traction control (ASR)
- Center section of the dashboard with fabric covering
- Electrically adjustable and heated exterior mirrors
- Electrically folding exterior mirrors
- Heated windshield washer nozzles including 5l washer fluid reservoir
- Hydraulic brake assist (HBA)
- Grey headliner
- Diesel particulate filter
- Tachometer
- Electronic parking brake including auto-hold function
- Electronic Stability Control (ESC)
- Electric windows front and rear, including anti-pinch protection and child safety lock
- Cruise control system
- Tinted windows
- Heated rear window
- Interior mirror automatically dimming
- Kessy, keyless entry and start-stop system
- Child safety lock for the rear doors and windows
- Removable boot cover
- Headrests (5) front and rear height adjustable
- LED fog lights
- LED license plate lights
- LED headlights with LED daytime running lights
- Steering wheel: height and reach adjustable
- Manual headlight range adjustment
- Rear center armrest with pass-through option
- Front center armrest, including storage compartment
- Engine drag torque control (MSR)
- Front and rear parking sensors
- Radio: Bolero music system with 10" display
- Radio accessories: 8 speakers
- Radio accessories: Digital radio reception DAB+
- Radio accessories: Voice control
- Rain sensor and driving light assistant ((Easy Light Assist) (Tunnel light, Coming Home, Leaving Home))
- Wheels: 17" alloy wheels Rotare AERO (7J x 17, ET 46 with tires 205/55 R17)
- Safety lights in the front side doors
- Seats: Electrically adjustable front seats with memory function
- Seats: Height-adjustable driver and passenger seats (including lumbar support)
- Speed limiter



- SKODA Care Connect (SOS emergency call function (eCall+ including automatic activation in the event of an accident with airbag deployment) - Mobility service (connection option for rapid assistance in case of breakdown) - Information service (connection option to the hotline for all questions relating to vehicle functions) - Free remote vehicle access for 1 year (Remote Access) with access to vehicle data and functions via smartphone, e.g. parking position, activating hazard warning lights, current fuel level)

- Lane keeping assistant (Lane Assist)
- Lane change and parking assist as well as exit warning
- 12V socket in the trunk
- Telephone: Phonebox with inductive charging function (connection via external antenna)
- Phone: Wireless SmartLink for Apple CarPlay
- Lashing eyes in the trunk
- Immobiliser
- Central locking including remote control integrated into the key and EASY Start

Extra equipment

- Rear window wiper including windshield washer system
- Steering wheel: Heated steering wheel in a sporty design with paddle shifters
- Wheels: 18" Perseus alloy wheels, silver polished (7.5J x 18, ET 48 with 225/45 R18 tires)
- Rear view camera
- Universal holder for multimedia devices including installation

- Paint finish: Metallic
- Package: Columbus infotainment package (Style, RS) (Columbus navigation system - Bluetooth hands-free system - Infotainment Online (3-year term), online map updates: for navigation, traffic situation, petrol stations and parking space search - 2 x USB charging ports in the rear as well as USB charging port on the rearview mirror)
- Winter wheel set 205/60R16 on alloy rim

Brief expert findings

Documents submitted	At the time of the inspection, the vehicle registration certificate Part 2 (title) was available, but the vehicle registration certificate Part 1 (document) was not. (Copy)
VIN comparison	The vehicle identification number (VIN) was read from the vehicle and its conformity with the submitted documents was confirmed by the undersigned during the inspection.
Inspection	The inspection conditions were sufficient for the assessment of the vehicle. No lifting equipment or pit was available for inspecting the vehicle. Therefore, inspection of the vehicle's underside was only possible to a limited extent.
Test drive	No test drive/shunting maneuver was carried out during the inspection of the vehicle.
Engine function test	An engine test run was performed.

Value reducing factors

No.	Component group	Description
1	Boot lid / rear door	Boot lid - Glued / labelled - De-glue / neutralise
2	Boot lid / rear door	Boot lid - Scratch(es) - Smart repair
3	Side panel - rear left side	Side panel - Dent / paintcoat damage - Smart repair
4	Trim / covers	Carpet - front left side - Broken / torn - Smart repair
5	Bonnet	Bonnet - Stone chips - Paint
6	Front bumper	Front bumper - Stone chips - Paint

Wear and tear

No.	Component group	Description
1	Trim / covers	Floor mats - Broken / torn - No deduction

The vehicle shows signs of wear and tear commensurate with its age and use.



Previous damages

No.	Previous damage	Extent of damage (Net)
1	Side - left, Provided by user / customer, from 5 Nov 2024	8.828,27 €

Repainting

No. Repainting

- 1 Side panel - rear left side, Professionally carried out, Invoice of repair done Non-existent
- 2 Door - rear left side, Professionally carried out, Invoice of repair done Non-existent
- 3 Door - front left side, Professionally carried out, Invoice of repair done Non-existent

Paint coat thickness measurement

Side panel - rear left side	210 µm	Door - rear left side	250 µm
Door - front left side	257 µm		

Order/Scope of Order

An order was placed to prepare a sales report for the described vehicle. This report includes the following:

- Description of key vehicle information
- Documentation of equipment features
(*Delivery by third-party service providers*)
- Documentation of damage, defects, missing parts
- Documentation of prior damage, unrepaired prior damage, repainting
- A brief visual or functional inspection of the equipment details, if possible.
(*Functional testing of driver assistance systems is not included in the scope of services!*)
- a photographic documentation of the vehicle

Basis for the order

This product is based on the guidelines for vehicle returns and valuations published by Alphabet Fleet GmbH. The expert makes the specific findings in each individual case objectively, within the framework of the prescribed standards, based on their own expertise.

The vehicle inspection takes place in a fully assembled, unassembled state.

Damage or defects that can only be detected during disassembly/diagnostic work or through further investigation remain within the realm of prognostic risk. An increased risk exists due to concealed defects caused by fraudulent misrepresentation and which were not identifiable by the expert.

Damage or defects resulting from normal use or wear and tear of the vehicle will be accepted in accordance with the applicable standard.

There was no explicit identification or monetary consideration of the expected features within the product.

Features which, in their nature and extent, slightly exceed normal use but do not constitute unacceptable damage, will be documented and indicated as signs of wear, if applicable.

Damage or defects that, according to the applicable standard, can no longer be attributed to normal use or wear and tear are listed under "Value Reducing Factors" in the product description.

Depending on the product specification, a monetary ID can be provided. If this takes place, the costs can be 100% d or pro rata depending on the vehicle's age and mileage.

Previous damages

According to available information previous damages were repaired at the vehicle. Traces of repairs, which allow conclusions about the area of repair, were not recognizable during the inspection.



Comments

Die Unterbodenbesichtigung war nur ebenerdig und eingeschränkt möglich. Mehrkosten möglich



Figure 1: Diagonal front (left)



Figure 2: Diagonal front (right)



Figure 3: Diagonal rear (left)



Figure 4: Diagonal rear (right)



Figure 5: Interior - front



Figure 6: Interior - rear



Figure 7: Instrument cluster



Figure 8: Instrument panel



Figure 9: Interior 360° view



Figure 10: Cargo area

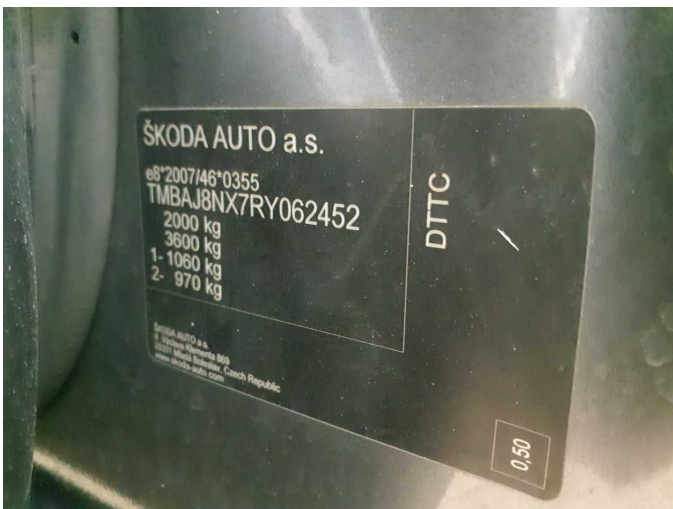


Figure 11: VIN



Figure 12: Mounted tyres

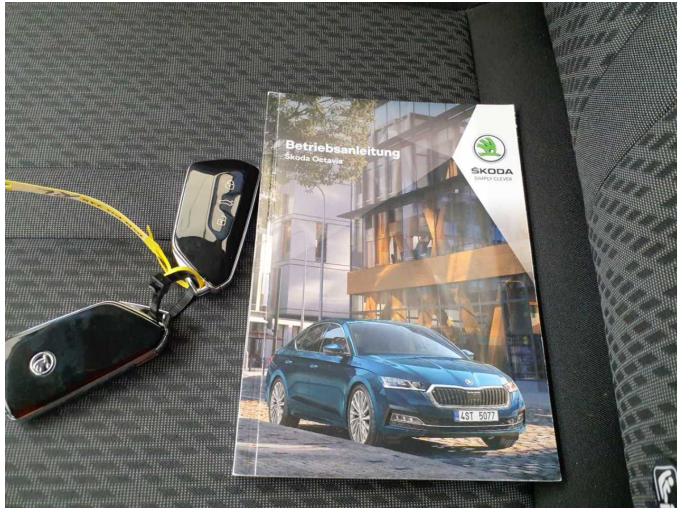


Figure 13: Documents



Figure 14: Documents



Figure 15: Additional tyres



Figure 16: Navigation



Figure 17: Misc.



Figure 18: Misc.



Figure 19: Misc.



Figure 20: Misc.



Figure 21: Misc.



Figure 22: Misc.



Figure 23: Misc.

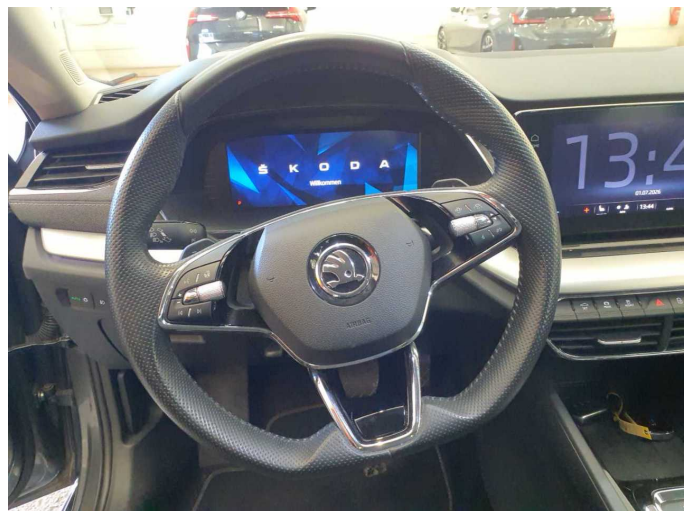


Figure 24: Misc.



Figure 25: Misc.



Figure 26: Misc.



Figure 27: Misc.

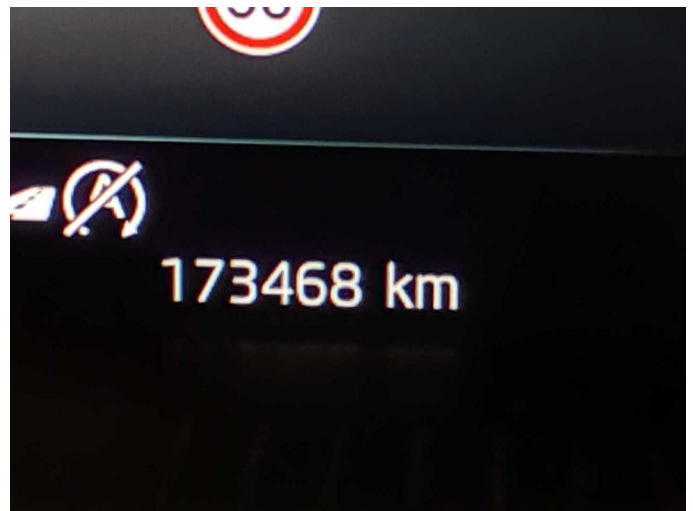


Figure 28: Misc.

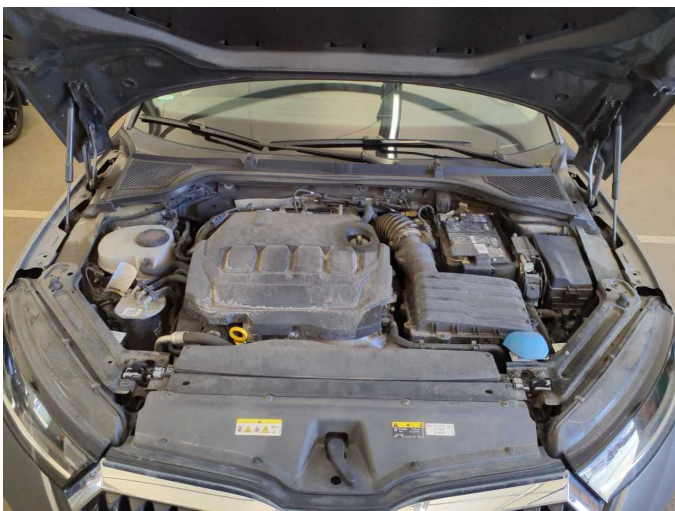


Figure 29: Misc.



Figure 30: Misc.

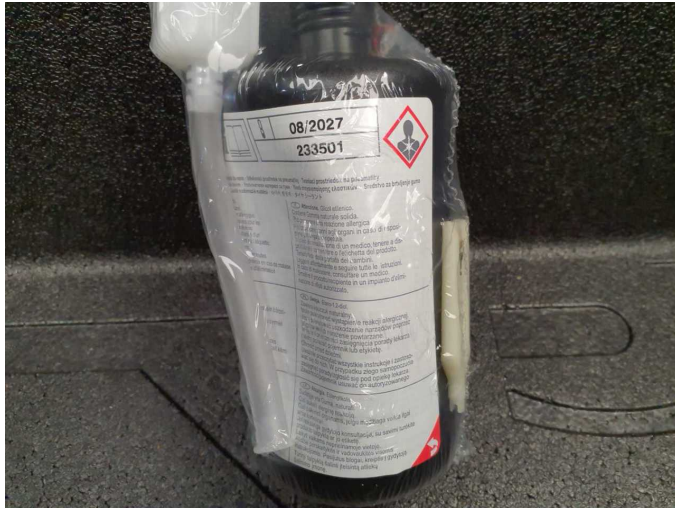


Figure 31: Misc.



Figure 32: Misc.



Figure 33: Misc.



Damage 1: Boot lid / rear door: Boot lid - Glued / labelled - De-glu / neutralise



Damage 1: Boot lid / rear door: Boot lid - Glued / labelled - De-glu / neutralise



Damage 2: Boot lid / rear door: Boot lid - Scratch(es) - Smart repair



Damage 2: Boot lid / rear door: Boot lid - Scratch(es) - Smart repair



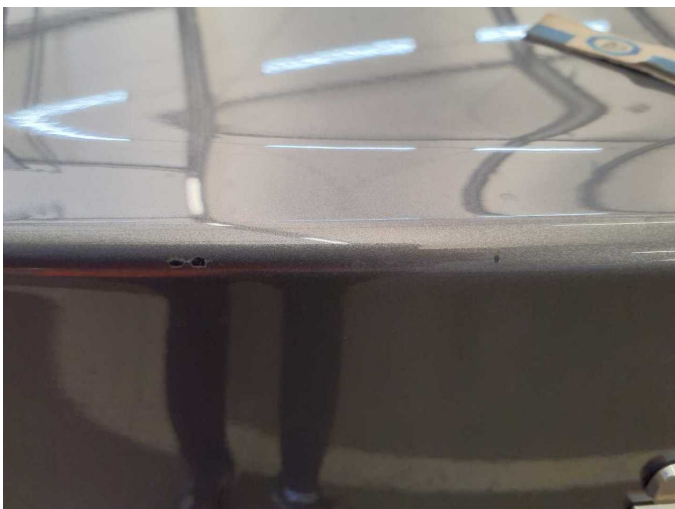
Damage 2: Boot lid / rear door: Boot lid - Scratch(es) - Smart repair



Damage 2: Boot lid / rear door: Boot lid - Scratch(es) - Smart repair



Damage 2: Boot lid / rear door: Boot lid - Scratch(es) - Smart repair



Damage 2: Boot lid / rear door: Boot lid - Scratch(es) - Smart repair



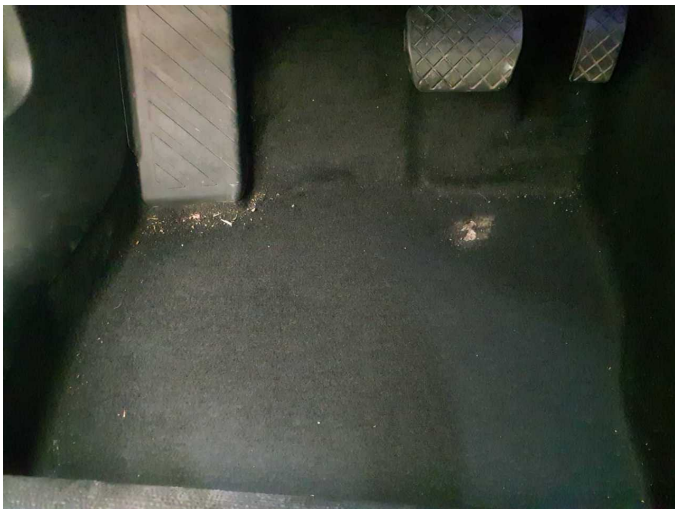
Damage 3: Side panel - rear left side: Side panel - Dent / paintcoat damage - Smart repair



Damage 3: Side panel - rear left side: Side panel - Dent / paintcoat damage - Smart repair



Damage 3: Side panel - rear left side: Side panel - Dent / paintcoat damage - Smart repair



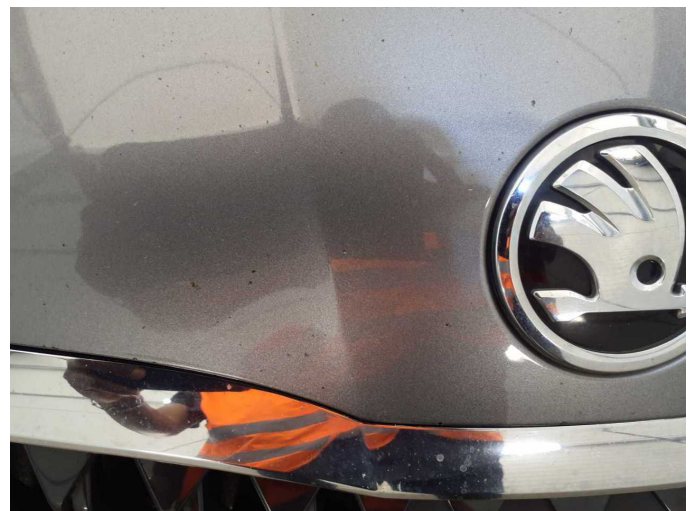
Damage 4: Trim / covers: Carpet - front left side - Broken / torn - Smart repair



Damage 4: Trim / covers: Carpet - front left side - Broken / torn - Smart repair



Damage 5: Bonnet: Bonnet - Stone chips - Paint



Damage 5: Bonnet: Bonnet - Stone chips - Paint



Damage 5: Bonnet: Bonnet - Stone chips - Paint



Damage 5: Bonnet: Bonnet - Stone chips - Paint



Damage 5: Bonnet: Bonnet - Stone chips - Paint



Damage 5: Bonnet: Bonnet - Stone chips - Paint



Damage 5: Bonnet: Bonnet - Stone chips - Paint



Damage 5: Bonnet: Bonnet - Stone chips - Paint



Damage 6: Front bumper: Front bumper - Stone chips - Paint



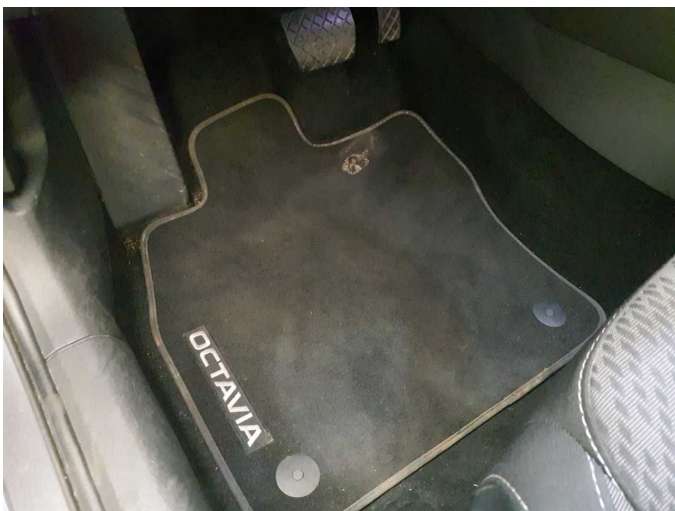
Damage 6: Front bumper: Front bumper - Stone chips - Paint



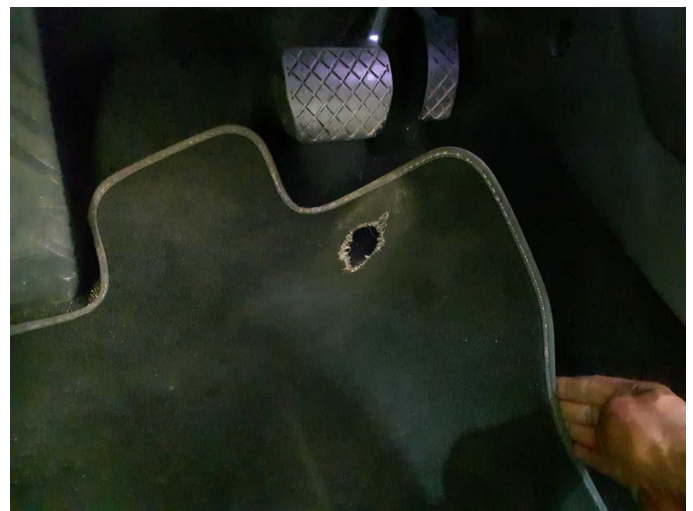
Damage 6: Front bumper: Front bumper - Stone chips - Paint



Damage 6: Front bumper: Front bumper - Stone chips - Paint



Wear and tear 1: Trim / covers: Floor mats - Broken / torn - No deduction



Wear and tear 1: Trim / covers: Floor mats - Broken / torn - No deduction



Repainting 1: Side panel - rear left side



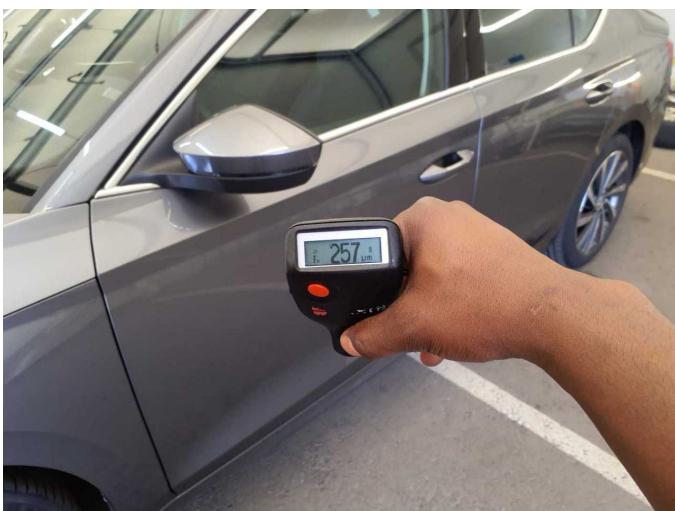
Repainting 1: Side panel - rear left side



Repainting 2: Door - rear left side



Repainting 2: Door - rear left side



Repainting 3: Door - front left side



Repainting 3: Door - front left side



Wartungshistorie

(gemäß Auftraggeber Informationen)

Fahrgestellnummer: TMBAJ8NX7RY062452
Hersteller / Modell: SKODA SKODA Octavia 2.0 TDI DSG Style

Datum	KM-Stand	Beschreibung
16.12.2025	151.232	Bremsflüssigkeit; Bremsflüssigkeit ern; Motoröl b. Wartung; Ölfilter ern; Regelwartungsdienst; Wartung Sonstiges
18.07.2025	119.505	Getriebeöl ern/prüfen; Motoröl b. Wartung; Ölfilter ern; Regelwartungsdienst; Wartung Sonstiges
24.02.2025	90.256	Bremse Sonstiges; Bremsklötze hinten; Bremsklötze vorne; Bremsscheiben + Klötze h; Bremsscheiben + Klötze v; Bremsscheiben hinten; Bremsscheiben vorne; Kraftstofffilter ern; Luftfiltereinsatz ern; Motoröl b. Wartung; Ölfilter ern; Regelwartungsdienst; Systemtest/Eigendiagnose; Wartung Sonstiges
06.09.2024	61.067	Motoröl b. Wartung; Ölfilter ern; Regelwartungsdienst; Wartung Sonstiges
28.03.2024	29.312	Motoröl b. Wartung; Ölfilter ern; Regelwartungsdienst; Wartung Sonstiges