

Expertise

Protocol number: 45139377
Order No. / Reference: 25785035
Inspection date: 24 Apr 2026

Manufacturer: Mercedes-Benz

Model: eSprinter Kasten 414 Standard 56 kWh PRO

VIN: W1V4UBHZ3SP737622



Vehicle details

Manufacturer / Type / Model / Equipment

Mercedes-Benz eSprinter Kasten 414 Standard 56 kWh PRO

Vehicle Identification number W1V4UBHZ3SP737622

Mileage (Read) 23,403 km

First registration 29 Jul 2024

Number of holders 1

Power / Engine displacement 80 kw / 0 ccm

Fuel type / Cylinder Electric / 0

Gearbox / Number of gears Direct drive / 1

Type of drive Rear drive

Type of vehicle Van

Colour / colour code ARKTIKWEISS

Doors / Seats 4 / 3

Upholstery type Artificial leather

Colour of upholstery Black

readiness to drive Not roadworthy /
moveable



Vehicle details

Maintenance booklet / proof	Non-existent	Next maintenance in	246 Tag(e)
Key is / should be	2 / 2	FZG documents	ZB#2 (B) was available (copy), ZB#1 (S) was not available.
		Letter No.	HE687205
Previous damage / Accident	None detectable	Repainting	None detectable
Inspection conditions	sufficient	Lifting equipment / pit	yes
Test drive	Not performed	Engine function test	With complaint
readiness to drive	Not roadworthy / moveable		
Manufacturer key number/ type code number	2222 / BQX 00217		
Emission standard	2017/1151;WLTP;reine Elektrofz	fine dust sticker	
Permitted total weight	4,100 kg	Empty weight	

Tyres

Mounted tyres

#	Tyre size	Type of tyre	Manufacturer	Tread depth
1)	225/75 R16 121R	Winter tyres on Steel	Continental	8mm / 8mm
2)	225/75 R16 121R	Winter tyres on Steel	Continental	7mm / 7mm

Additional tyres

#	Tyre size	Type of tyre	Manufacturer	Tread depth
1)	225/75 R16 121R	Summer tyres on Steel	Continental	6mm / 6mm
2)	225/75 R16 121R	Summer tyres on Steel	Continental	6mm / 6mm

Replacement

Typ	Tyre size	Type of tyre	Manufacturer	Tread depth
E	225/75 R16 121R C	Summer tyres on Steel	Continental	8 mm

Legend: Tread depth information for the left tire is listed first, for the right tire it is listed second on the axle in the direction of travel.



Equipment

Standard equipment

- Turn assist
- Storage compartment under cockpit
- Driver's side airbag
- Anti-lock braking system
- Electrically folding exterior mirrors
- Outdoor temperature display
- Battery: AC charging 11 kW / DC charging 50 kW
- Battery: High-voltage battery (56 kWh)
- Hill start assist
- Brake lights, adaptive
- ESP - Adaptive ESP9i
- Comfort electric window regulator front (driver/passenger)
- Speed limit 80 km/h
- Weight variant 4,100 kg
- Grab handle for entry to the cargo area sliding door on the partition wall
- Intelligent speed assistant
- semi-automatic air conditioning system controlled by TEMPATIC
- Paint finish: Solid color paint
- Cable duct at rear portal
- Steering wheel adjustable for tilt and height
- electric steering
- Longitudinal beam reinforcement
- Navigation: Navigation pre-installation
- Package: Maintenance Package
- Radio: Digital Radio DAB
- Radio: MBUX multimedia system
- Rain sensor
- Tires: 225/75 R16C
- Tires: Tires optimized for rolling resistance
- Tires: Summer tires
- Tire pressure monitoring (on front and rear axles (wireless))
- Sliding door on the right, cargo/passenger compartment
- Seats: Driver's seat adjustable
- Jump start contact (The jump start contact facilitates jump-starting the vehicle and externally charging the starter battery. The contact is located in the engine compartment on the air filter box.)
- Wheel chock
- Pre-installation for remote and navigation services
- Pre-installation Remote and Charging Services Premium
- Immobiliser
- Heat-insulating glass all around

Extra equipment

- Storage for smartphones including wireless charging
- Active Distance Assist DISTRONIC
- Electrically adjustable and heated exterior mirrors, left and right

- Storage compartment above windshield
- Rear towing eye
- Acoustic environmental protection
- ATTENTION ASSIST (ATTENTION ASSIST can assist the driver on long, monotonous journeys by monitoring attention. If signs of fatigue or increasing inattention are detected, it suggests a break.)
- Battery: fleece battery 12 V / 92 Ah
- third brake light
- Roof: High roof
- Driving light assistant (automatically switching on driving lights)
- Transmission: Direct drive
- Seatbelt warning device for driver's seat
- Grab handle for entry of driver and passenger
- HOLD function
- Climate: Pre-conditioning
- Communication module (LTE) for digital services
- Headrests (2), front
- Mode 3 charging cable (Type 2, 3x20A) 8m
- Cable duct on side wall
- Steering wheel: Multifunction steering wheel
- Headlight range control
- Mercedes-Benz emergency call system (communication module (LTE) for digital services breakdown management)
- Breakdown Management (By pressing the breakdown button or via the phone book entry in the vehicle's address book, the disabled vehicle automatically establishes a voice connection with the Customer Assistance Center (CAC). It transmits the current location and all relevant vehicle information. The CAC staff immediately inform the nearest Mercedes-Benz Service24h, which dispatches a repair service.)
- Wheels: Steel rims 6.5 J x 16
- Crosswind Assist
- Seat heating on driver's side
- Storage compartment for charging cables
- USB 5V socket
- Blind Spot Assist
- continuous partition wall
- First aid kit
- Pre-installation for Remote Services Plus
- Warning triangle
- Parking light removed
- Central locking with multi-button remote control

- Passenger side airbag
- Entrance rear door
- Battery: AC charging 11 kW / DC charging 115 kW



- BOTT - Installation
 - Brakes: Electric parking brake
 - Entry handle on rear left corner pillar
 - Lockable compartment in storage area above windshield
 - Seatbelt warning device for front passenger seat
 - Clothes hooks in the driver's cab
 - leather steering wheel
 - Navigation
 - Fog lights with cornering function
 - Package: Acoustics
 - Package: Smartphone Integration Package
 - Parking package with reversing camera
 - Upholstery: ARTICO black leatherette
 - Spare wheel
 - Spare wheel carrier under frame end
 - Double-leaf rear door, opening to side wall
 - Key: Multi-button radio remote control
 - Seats: Driver's seat armrest
 - Seats: Passenger seat, two-seater (including two headrests)
 - Seats: Suspension seat comfort version, driver's seat
 - Rear panel
 - WET WIPER SYSTEM
 - Winter complete wheels
 - Heat-insulating glass all around with band filter on the windshield
- Plastic flooring
 - Brake assist, active
 - Ceiling light in the cargo/passenger compartment (with door contact)
 - All-weather floor mats with high surrounding edge
 - Hinged lid for storage compartment
 - LED High Performance Headlights
 - Marker lights, side
 - Navigation accessories: Pre-installation for Live Traffic Information
 - Package: Instrument Panel Charging Package (The charging package expands the charging options in the cockpit with two 5V USB-C ports and one 12V socket. One USB port and the 12V socket are installed in the center storage compartment of the instrument panel, and another USB port is located in the lower part of the center console. This allows for the charging of electronic devices such as mobile phones within easy reach of the driver and front passenger.)
 - Seats: Driver's seat box, low
 - Seats: Lumbar support for driver's seat
 - Seat heating on passenger side
 - Long-throw nozzles in I-panel
 - Heated windshield
 - Winter Package Plus
 - Thermal insulation driver's compartment
 - Additional rear door locking mechanism at 90 degrees

Brief expert findings

Documents submitted	At the time of the inspection, the vehicle registration certificate Part 2 (title) was available, but the vehicle registration certificate Part 1 (document) was not. (Copy)
VIN comparison	The vehicle identification number (VIN) was read from the vehicle and its conformity with the submitted documents was confirmed by the undersigned during the inspection.
Inspection	The inspection conditions were sufficient for the assessment of the vehicle. Lifting equipment and/or a pit were available for examining the vehicle.
Test drive	No test drive/shunting maneuver was carried out during the inspection of the vehicle.
Engine function test	An engine test run was performed, problem has been detected
readiness to drive	The vehicle was not capable of driving under its own power at the time of inspection, but can be moved on its own axle with the aid of assistance.

Value reducing factors

No.	Component group	Description
1	Misc.	Inspection / maintenance - No evidence - No deduction
2	Electrical system	Battery (Tiefenentladen) - Functional / admissibility - Perform diagnosis
3	Instrument panel	Indicator light (Tachograf) - on - Perform diagnosis
4	Front bumper	Front bumper (unpainted) - Scratch(es) - Loss in value
5	Misc.	Tachograph inspection (Sicherheitsverletzung) - Functional / admissibility - Perform diagnosis
6	Mudguard - left side	Mudguard - left side - Scratch(es) - Paint

Wear and tear



No.	Component group	Description
1	Sliding door, right	Sliding door - dent(s) - No deduction

The vehicle shows signs of wear and tear commensurate with its age and use.

Missing parts

Description

Documents - Service book (Digitaler Ausdruck)

Order/Scope of Order

An order was placed to prepare a sales report for the described vehicle. This report includes the following:

- Description of key vehicle information
- Documentation of equipment features
(*Delivery by third-party service providers*)
- Documentation of damage, defects, missing parts
- Documentation of prior damage, unrepaired prior damage, repainting
- A brief visual or functional inspection of the equipment details, if possible.
(*Functional testing of driver assistance systems is not included in the scope of services!*)
- a photographic documentation of the vehicle

Basis for the order

This product is based on the guidelines for vehicle returns and valuations of light commercial vehicles published by Alphabet Fleet Management GmbH. The expert makes the specific findings in each individual case objectively, within the framework of the prescribed standards, based on their own expertise.

The vehicle inspection takes place in a fully assembled, unassembled state.

Damage or defects that can only be detected during disassembly/diagnostic work or through further investigation remain within the realm of prognostic risk. An increased risk exists due to concealed defects caused by fraudulent misrepresentation and which were not identifiable by the expert.

Damage or defects resulting from normal use or wear and tear of the vehicle will be accepted in accordance with the applicable standard.

There was no explicit identification or monetary consideration of the expected features within the product.

Features which, in their nature and extent, slightly exceed normal use but do not constitute unacceptable damage, will be documented and indicated as signs of wear, if applicable.

Damage or defects that, according to the applicable standard, can no longer be attributed to normal use or wear and tear are listed under "Value Reducing Factors" in the product description.

Depending on the product specification, a monetary ID can be provided. If this takes place, the costs can be 100% d or pro rata depending on the vehicle's age and mileage.

Previous damages

No apparent prior damage that had been repaired could be found on the vehicle.



Figure 1: Diagonal front (left)



Figure 2: Diagonal front (right)



Figure 3: Diagonal rear (left)



Figure 4: Diagonal rear (right)

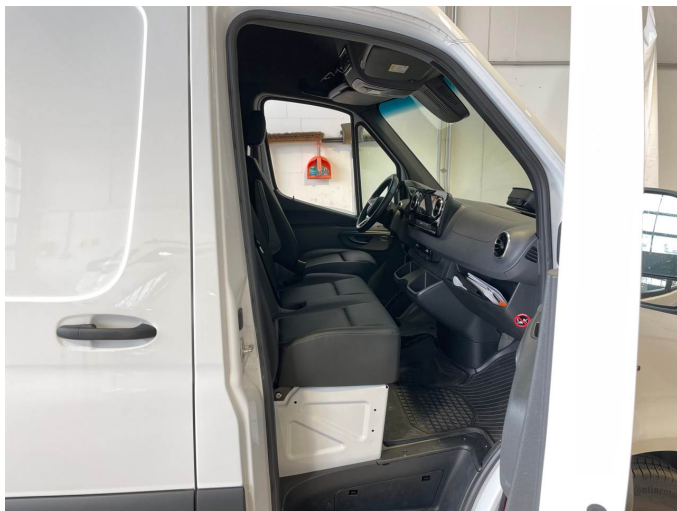


Figure 5: Interior - front



Figure 6: Interior - rear

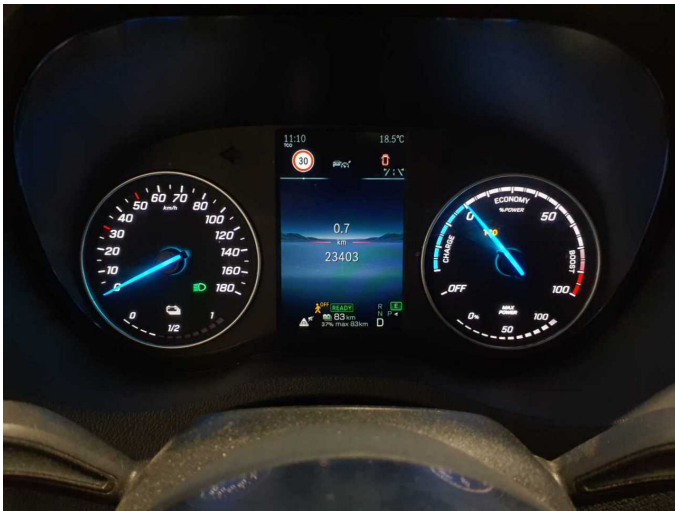


Figure 7: Instrument cluster



Figure 8: Instrument panel



Figure 9: Interior 360° view



Figure 10: Cargo area



Figure 11: VIN



Figure 12: Mounted tyres

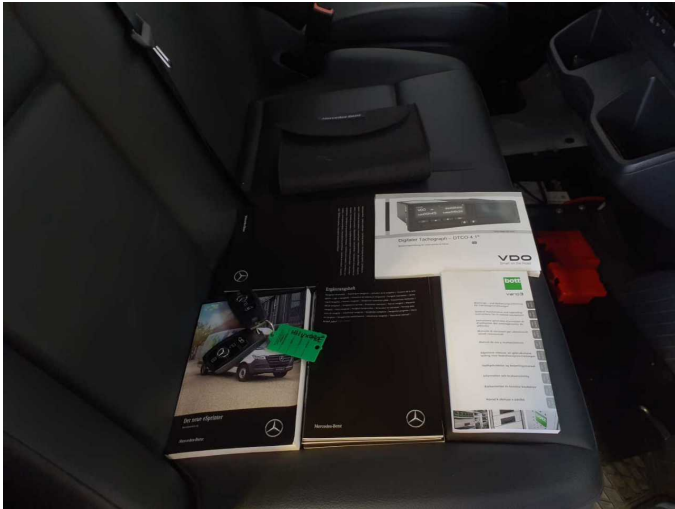


Figure 13: Documents



Figure 14: Additional tyres



Figure 15: Navigation



Figure 16: Misc.



Figure 17: Misc.



Figure 18: Misc.



Figure 19: Misc.



Figure 20: Misc.



Figure 21: Misc.



Figure 22: Misc.



Figure 23: Misc.



Figure 24: Misc.



Figure 25: Misc.



Figure 26: Misc.



Figure 27: Misc.

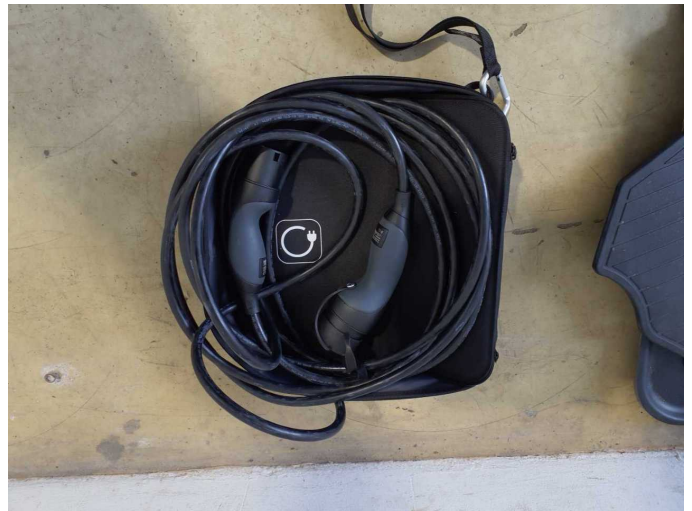


Figure 28: Misc.

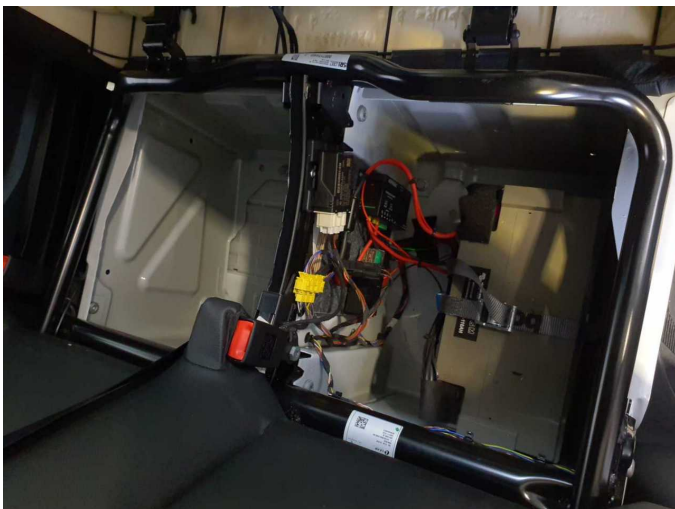


Figure 29: Misc.



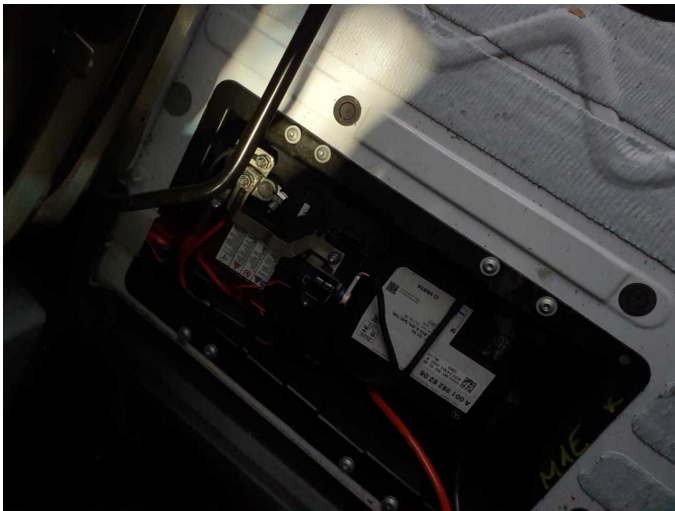
Figure 30: Misc.



Figure 31: Misc.



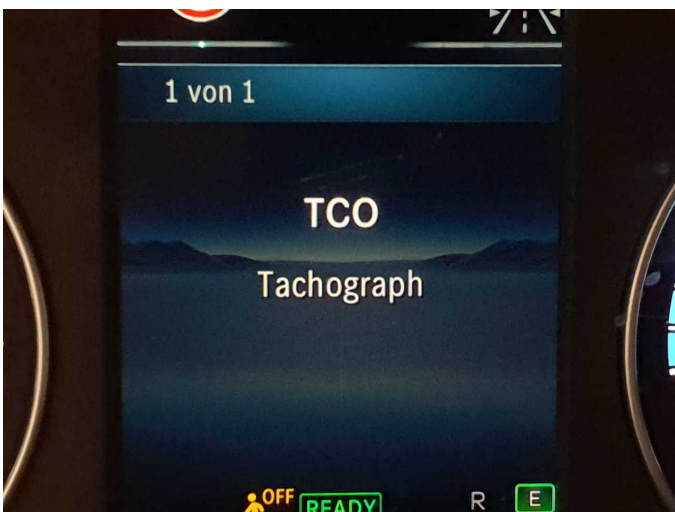
Damage 2: Electrical system: Battery (Tiefenentladen) - Functional / admissibility - Perform diagnosis



Damage 2: Electrical system: Battery (Tiefenentladen) - Functional / admissibility - Perform diagnosis



Damage 2: Electrical system: Battery (Tiefenentladen) - Functional / admissibility - Perform diagnosis



Damage 3: Instrument panel: Indicator light (Tachograf) - on - Perform diagnosis



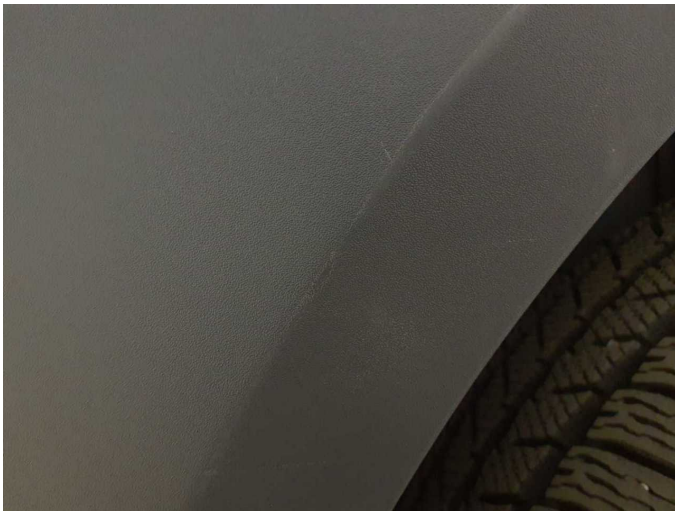
Damage 4: Front bumper: Front bumper (unpainted) - Scratch(es) - Loss in value



Damage 4: Front bumper: Front bumper (unpainted) - Scratch(es) - Loss in value



Damage 4: Front bumper: Front bumper (unpainted) - Scratch(es) - Loss in value



Damage 4: Front bumper: Front bumper (unpainted) - Scratch(es) - Loss in value



Damage 5: Misc.: Tachograph inspection (Sicherheitsverletzung) - Functional / admissibility - Perform diagnosis



Damage 6: Mudguard - left side: Mudguard - left side - Scratch(es) - Paint



Damage 6: Mudguard - left side: Mudguard - left side - Scratch(es) - Paint



Damage 6: Mudguard - left side: Mudguard - left side - Scratch(es) - Paint



Damage 6: Mudguard - left side: Mudguard - left side - Scratch(es) - Paint