

## Expertise

Protocol number: 46108141  
Order No. / Reference: 26472955  
Inspection date: 23 Jun 2026

Manufacturer: Peugeot

Model: 208 BlueHDi 100 GT Pack

VIN: VR3UBYHTKMT098212



### Vehicle details

#### Manufacturer / Type / Model / Equipment

Peugeot 208 BlueHDi 100 GT Pack

**Vehicle Identification number** VR3UBYHTKMT098212

**Mileage (Read)** 85,518 km

**First registration** 9 Dec 2021

**Number of holders** 1

**Next periodical technical inspection** 01/2027  
(Report not on hand)

**Power / Engine displacement** 75 kw / 1,499 ccm

**Fuel type / Cylinder** Diesel / 4

**Gearbox / Number of gears** Manual / 6

**Type of drive** Front drive

**Type of vehicle** Saloon car

**Colour / colour code** Artense Silber Metallic

**Doors / Seats** 5 / 5

**Upholstery type** Alcantara / Leather

**Colour of upholstery** Black-Anthracite

**Re-import** no

**readiness to drive** Roadworthy



## Vehicle details

<b>Maintenance booklet / proof</b>	digital proof / complete	<b>Next maintenance in</b>	11 Monat(e)
<b>Last service on / at</b>	04/2026 at 83,927 km		
<b>Key is / should be</b>	2 / 2	<b>FZG documents</b>	ZB#2 (B) was available (copy), ZB#1 (S) was not available.
		<b>Letter No.</b>	GA832399
<b>Previous damage / Accident</b>	Detectable	<b>Repainting</b>	Detectable
<b>Inspection conditions</b>	sufficient	<b>Lifting equipment / pit</b>	yes
<b>Test drive</b>	Not performed	<b>Engine function test</b>	Performed
<b>readiness to drive</b>	Roadworthy		
<b>Manufacturer key number/ type code number</b>	1889 / ABP 00110		
<b>Emission standard</b>	EURO6;WLTP;AP;PI/CI; M, N1 I	<b>fine dust sticker</b>	
<b>Permitted total weight</b>	1,650 kg	<b>Empty weight</b>	

## Tyres

### Mounted tyres

#	Tyre size	Type of tyre	Manufacturer	Tread depth
1)	185/65 R15 88T	Winter tyres on Light alloy	Dunlop	3mm / 3mm
2)	185/65 R15 88T	Winter tyres on Light alloy	Dunlop	5mm / 5mm

### Additional tyres

#	Tyre size	Type of tyre	Manufacturer	Tread depth
1)	205/45 R17 88H	Summer tyres on Light alloy	Continental	4mm / 4mm
2)	205/45 R17 88H	Summer tyres on Light alloy	Continental	4mm / 4mm

### Replacement

Typ	Tyre size	Type of tyre	Manufacturer	Tread depth
N	125/80 R15 95M	Summer tyres on Steel	Sonstige	2 mm

**Legend: Tread depth information for the left tire is listed first, for the right tire it is listed second on the axle in the direction of travel.**

TÜV SÜD Auto Partner GmbH  
Wiesenring 2  
04159 Leipzig

Inspection location  
Hartmann Compound Professionals  
Arnoldschacht 9-11  
44894 Bochum



## Equipment



## Standard equipment

- Storage compartment with smartphone holder
- Active Safety Brake
- Airbag for driver and front passenger
- Airbag: Curtain airbags front and rear
- Automatic Cruise Control (ACC)
- Electrically adjustable and heated exterior mirrors with integrated LED turn signals
- Hill start assist
- Turn signals with lane change indicator function
- third brake light
- LED ceiling light at the front
- Three-point seat belts at all seats
- EBV (Electronic Brakeforce Distribution)
- Front parking aid, acoustic and visual
- Driving mode selector "Eco" and "Sport"
- Misfueling protection
- Electric windows, front
- electric parking brake
- Front collision warning
- Full LED headlights
- Cruise control system with speed limiter
- Cup holder in the center console
- GT logo on the trunk lid
- Heated rear window
- Rear apron in black
- Interior mirror automatically dimming
- ISOFIX child seat anchor
- Keyless System Plus
- Automatic climate control with activated carbon filter
- Radiator grille with chrome applications
- White LED lighting on the center console and in the front footwell
- Steering wheel adjustable for height and reach
- light sensor
- Illuminated makeup mirrors for driver and front passenger
- Fatigue warning
- Emergency brake assist
- Aluminum pedals and stainless steel door sills
- Pollen filter
- Radio: RCC audio system
- Radio accessories: Mirror Screen
- Wheel arches in glossy black
- Rain sensor
- Wheels: 17" "Bronx" alloy wheels, two-tone, including 15" spare wheel
- Shift point indicator
- Side and rear windows are more heavily tinted.
- Seats: Passenger seat height adjustable
- Lane keeping assist with steering intervention
- Stop&Start system
- Blind spot assist
- ABS (Anti-lock Braking System)
- Active Safety Brake Plus
- Airbag: Front side airbag
- Exhaust with chrome-plated tailpipes
- Electrically folding exterior mirrors with LED approach lighting
- Exterior mirror caps Perla Nera Black
- Trim panel between the taillights in glossy black
- On-board computer
- Black headliner
- Digital instrument cluster with high-resolution 10" screen, adjustable and customizable
- Rear parking aid, acoustic and visual
- ESP (Electronic Stability Program) with ASR (Anti-Slip Regulation)
- Electric rear windows
- High beam assist
- Follow-me-home function (automatic)
- noise-reducing windshield
- Front and rear floor mats with decorative stitching in green
- Transmission: 6-speed manual transmission
- Green decorative stitching on the dashboard, steering wheel and the armrests of the front and rear doors
- rear window wiper
- Rear spoiler, glossy black
- Frameless interior mirror
- Map pockets on the front seatbacks
- Manual child lock
- Headrests (5)
- LED ambient lighting on the dashboard and door trim
- LED ceiling lighting at the front
- LED taillights
- Steering wheel: Small multifunction leather steering wheel, flattened at the top and bottom.
- Front center armrests
- Navigation system: 3D navigation system NAC
- Particulate filter: FAP diesel particulate filter
- Peugeot Connect Box with free telematics services
- Upholstery: Alcantara/synthetic leather
- Radio accessories: Digital radio reception DAB+
- Radio accessories: Multifunctional touchscreen with 10" HD color display
- Tire pressure monitoring system
- Reversing camera with 180° surround view
- Rear seat backrest 40/60 split folding
- Keyless start system
- Electric power steering
- Seats: Driver's seat height adjustable
- 12-volt socket in the trunk
- Daytime running lights: LED daytime running lights
- Door handles painted in car color
- Traffic sign recognition



- Doors lock automatically when driving off
- Immobiliser
- Decorative strip below the side windows in glossy black

- Central locking system, activatable from inside via remote control

### Extra equipment

- Paint finish: Special metallic paint
- Park Assist (active parking system with automatic steering for parallel and perpendicular parking spaces)

- Panoramic glass roof with blind

## Brief expert findings

Documents submitted	At the time of the inspection, the vehicle registration certificate Part 2 (title) was available, but the vehicle registration certificate Part 1 (document) was not. (Copy)
VIN comparison	The vehicle identification number (VIN) was read from the vehicle and its conformity with the submitted documents was confirmed by the undersigned during the inspection.
Inspection	The inspection conditions were sufficient for the assessment of the vehicle. Lifting equipment and/or a pit were available for examining the vehicle.
Test drive	No test drive/shunting maneuver was carried out during the inspection of the vehicle.
Engine function test	An engine test run was performed.
readiness to drive	The vehicle was roadworthy at the time of inspection.

## Value reducing factors

No.	Component group	Description
1	Side panel - rear left side	Sill - dent(s) - Smart repair
2	Rear bumper	Rear bumper - Scratch(es) - Smart repair
3	Front bumper	Front bumper - Scratch(es) - Smart repair
4	Engine	Engine (Mehrkosten möglich) - Leaking - Diagnosed and repair if necessary
5	Interior	Interior (Hundegeur) - Odour - Ozone treatment
6	2nd wheel set	2 alloy rims - Scratched - Loss in value

## Wear and tear

No.	Component group	Description
1	Bonnet	Bonnet - Stone chips - No deduction
2	Wheel / tyres	Alloy rim - front left side - Scratched - No deduction
3	Vehicle glazing	Windscreen - Stone chips - No deduction

The vehicle shows signs of wear and tear commensurate with its age and use.

## Previous damages

No.	Previous damage	Extent of damage (Net)
1	Side - left, Side right, Provided by user / customer	

## Repainting

No.	Repainting
1	Side panel - rear right side, Door - rear right side, Door - front left side, Door - front right side

## Paint coat thickness measurement

Side panel - rear right side	184 µm	Door - rear right side	218 µm
Door - front left side	185 µm	Door - front right side	222 µm



## Order/Scope of Order

An order was placed to prepare a sales report for the described vehicle. This report includes the following:

- Description of key vehicle information
- Documentation of equipment features  
*(Delivery by third-party service providers)*
- Documentation of damage, defects, missing parts
- Documentation of prior damage, unrepaired prior damage, repainting
- A brief visual or functional inspection of the equipment details, if possible.  
*(Functional testing of driver assistance systems is not included in the scope of services!)*
- a photographic documentation of the vehicle

## Basis for the order

This product is based on the guidelines for vehicle returns and valuations published by Alphabet Fleet GmbH. The expert makes the specific findings in each individual case objectively, within the framework of the prescribed standards, based on their own expertise.

The vehicle inspection takes place in a fully assembled, unassembled state.

Damage or defects that can only be detected during disassembly/diagnostic work or through further investigation remain within the realm of prognostic risk. An increased risk exists due to concealed defects caused by fraudulent misrepresentation and which were not identifiable by the expert.

Damage or defects resulting from normal use or wear and tear of the vehicle will be accepted in accordance with the applicable standard.

There was no explicit identification or monetary consideration of the expected features within the product.

Features which, in their nature and extent, slightly exceed normal use but do not constitute unacceptable damage, will be documented and indicated as signs of wear, if applicable.

Damage or defects that, according to the applicable standard, can no longer be attributed to normal use or wear and tear are listed under "Value Reducing Factors" in the product description.

Depending on the product specification, a monetary ID can be provided. If this takes place, the costs can be 100% or pro rata depending on the vehicle's age and mileage.

## Previous damages

According to available information previous damages were repaired at the vehicle. Traces of repairs, which allow conclusions about the area of repair, were not recognizable during the inspection.

## Comments

- Für den montierten Radsatz wurde kein Nachweis erbracht.

- Winterradsatz ist kein Bestandteil des Auslieferungsumfangs.



Figure 1: Diagonal front (left)



Figure 2: Diagonal front (right)



Figure 3: Diagonal rear (left)



Figure 4: Diagonal rear (right)

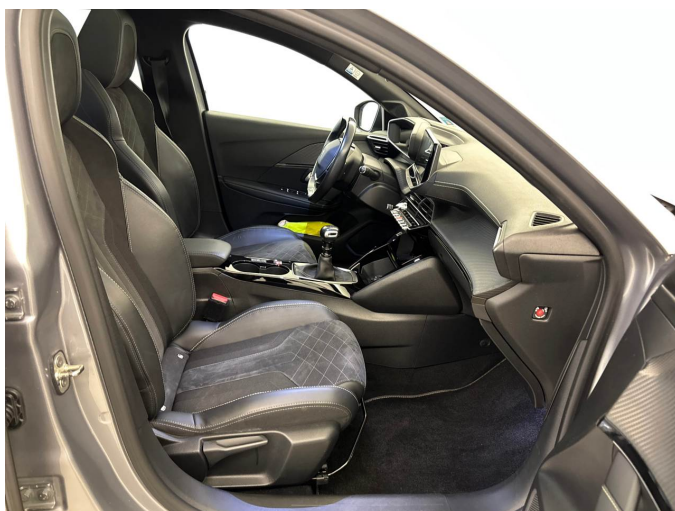


Figure 5: Interior - front



Figure 6: Interior - rear



Figure 7: Instrument cluster



Figure 8: Instrument panel



Figure 9: Interior 360° view



Figure 10: Cargo area

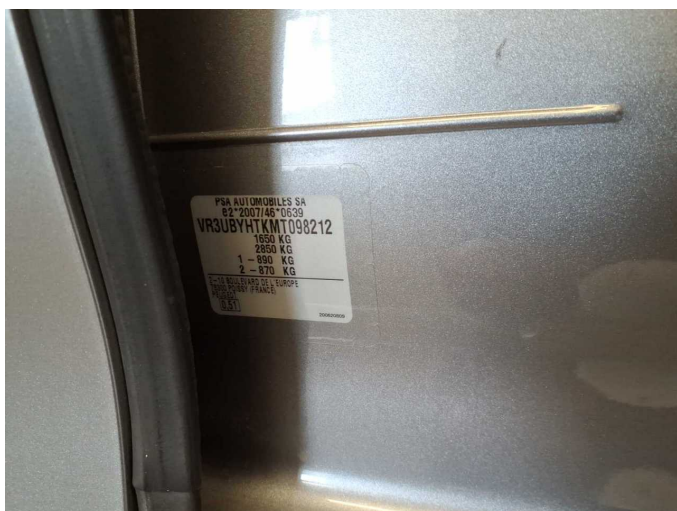


Figure 11: VIN



Figure 12: Mounted tyres

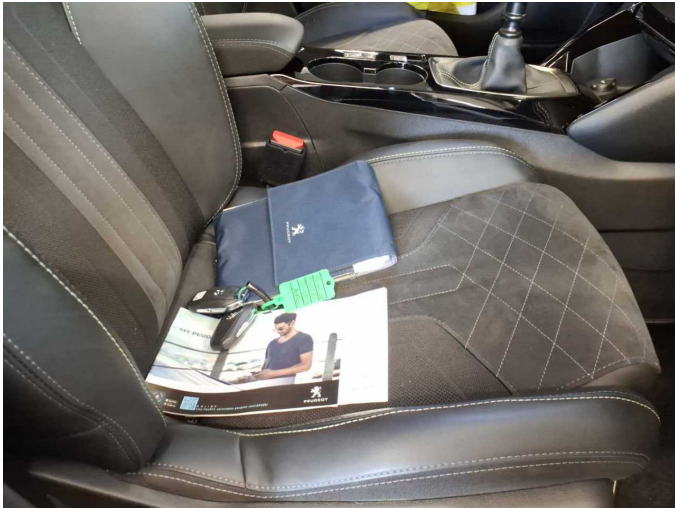


Figure 13: Documents

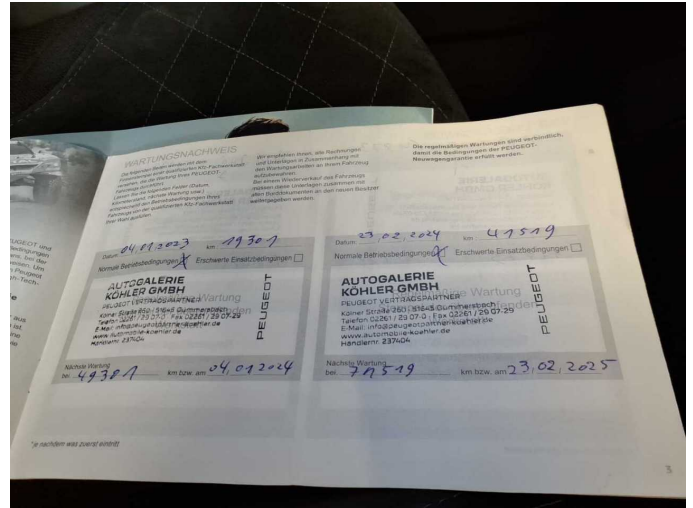


Figure 14: Documents

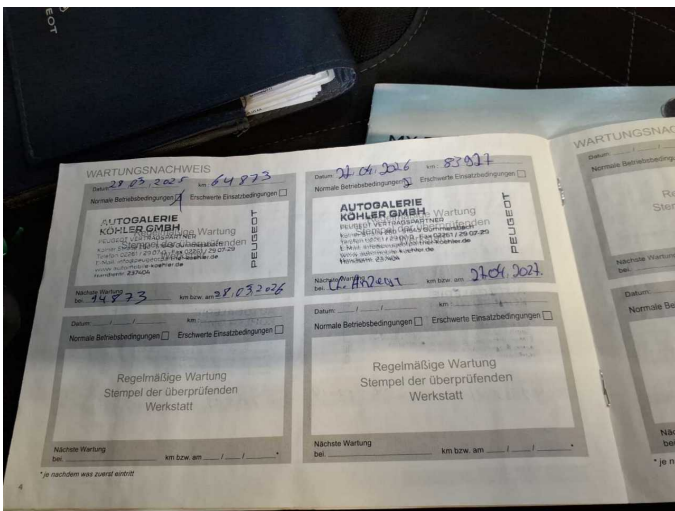


Figure 15: Documents



Figure 16: Additional tyres



Figure 17: Navigation



Figure 18: Misc.



Figure 19: Misc.



Figure 20: Misc.



Figure 21: Misc.



Figure 22: Misc.



Figure 23: Misc.



Figure 24: Misc.



Figure 25: Misc.



Figure 26: Misc.

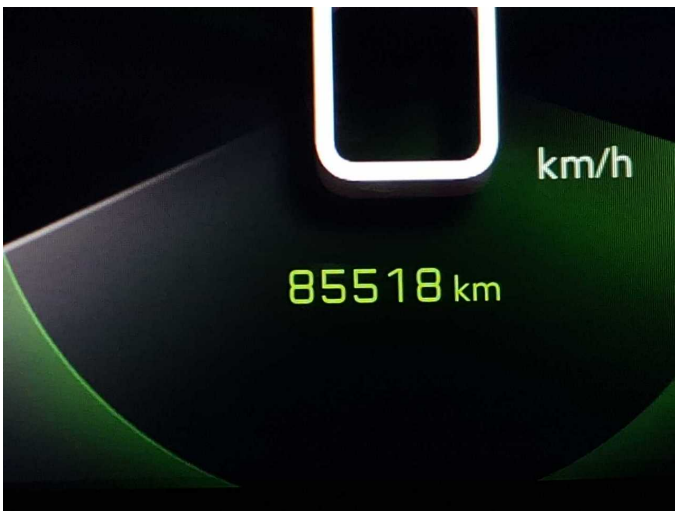


Figure 27: Misc.



Figure 28: Misc.



Figure 29: Misc.



Damage 1: Side panel - rear left side: Sill - dent(s) - Smart repair



**Damage 1:** Side panel - rear left side: Sill - dent(s) - Smart repair



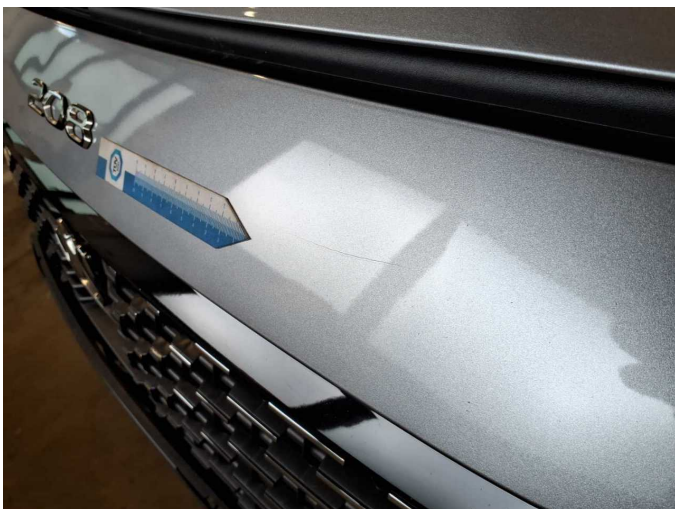
**Damage 2:** Rear bumper: Rear bumper - Scratch(es) - Smart repair



**Damage 2:** Rear bumper: Rear bumper - Scratch(es) - Smart repair



**Damage 3:** Front bumper: Front bumper - Scratch(es) - Smart repair



**Damage 3:** Front bumper: Front bumper - Scratch(es) - Smart repair



**Damage 3:** Front bumper: Front bumper - Scratch(es) - Smart repair



**Damage 3:** Front bumper: Front bumper - Scratch(es) - Smart repair



**Damage 4:** Engine: Engine (Mehrkosten möglich) - Leaking - Diagnosed and repair if necessary



**Damage 4:** Engine: Engine (Mehrkosten möglich) - Leaking - Diagnosed and repair if necessary



**Damage 4:** Engine: Engine (Mehrkosten möglich) - Leaking - Diagnosed and repair if necessary



**Damage 6:** 2nd wheel set: 2 alloy rims - Scratched - Loss in value



**Damage 6:** 2nd wheel set: 2 alloy rims - Scratched - Loss in value



**Damage 6:** 2nd wheel set: 2 alloy rims - Scratched - Loss in value



**Damage 6:** 2nd wheel set: 2 alloy rims - Scratched - Loss in value



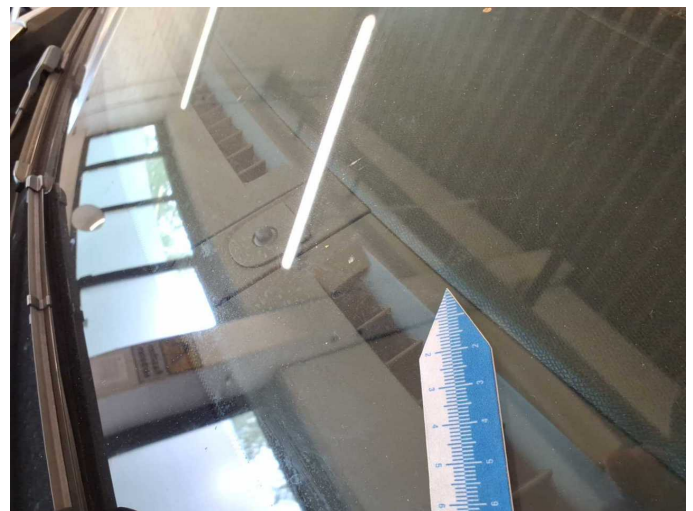
**Wear and tear 1:** Bonnet: Bonnet - Stone chips - No deduction



**Wear and tear 1:** Bonnet: Bonnet - Stone chips - No deduction



**Wear and tear 3:** Vehicle glazing: Windscreen - Stone chips - No deduction



**Wear and tear 3:** Vehicle glazing: Windscreen - Stone chips - No deduction



**Repainting 1:** Side panel - rear right side, Door - rear right side, Door - front left side, Door - front right side



**Repainting 1:** Side panel - rear right side, Door - rear right side, Door - front left side, Door - front right side



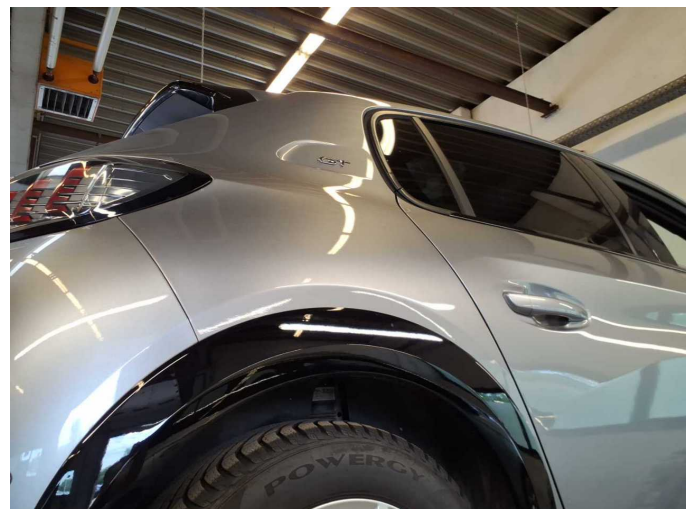
**Repainting 1:** Side panel - rear right side, Door - rear right side, Door - front left side, Door - front right side



**Repainting 1:** Side panel - rear right side, Door - rear right side, Door - front left side, Door - front right side



**Repainting 1:** Side panel - rear right side, Door - rear right side, Door - front left side, Door - front right side



**Repainting 1:** Side panel - rear right side, Door - rear right side, Door - front left side, Door - front right side



**Repainting 1:** Side panel - rear right side, Door - rear right side, Door - front left side, Door - front right side



**Repainting 1:** Side panel - rear right side, Door - rear right side, Door - front left side, Door - front right side



# Wartungshistorie

(gemäß Auftraggeber Informationen)

Fahrgestellnummer: VR3UBYHTKMT098212  
Hersteller / Modell: PEUGEOT PEUGEOT 208 BlueHDi 100 GT Pack

Datum	KM-Stand	Beschreibung
27.04.2026	83.927	Bremsflüssigkeit; Bremsflüssigkeit ern; Motoröl b. Wartung; Ölfilter ern; Regelwartungsdienst; Wartung Sonstiges
14.11.2025	72.072	Systemtest/Eigendiagnose
22.04.2025	66.219	Bremse Sonstiges; Bremsklötze vorne; Bremsscheiben + Klötze v; Bremsscheiben vorne
28.03.2025	64.873	Kraftstofffilter ern; Luftfiltereinsatz ern; Motoröl b. Wartung; Ölfilter ern; Regelwartungsdienst; Wartung Sonstiges; Wartung Sonstiges
10.01.2025	59.169	AU
23.02.2024	41.518	Bremsflüssigkeit; Bremsflüssigkeit ern; Motoröl b. Wartung; Ölfilter ern; Regelwartungsdienst; Wartung Sonstiges
13.01.2023	19.301	Motoröl b. Wartung; Regelwartungsdienst