

Expertise

Protocol number: 46241950
Order No. / Reference: 26533817
Inspection date: 30 Jun 2026

Manufacturer: Audi

Model: A3 35 TDI Sportback S tronic S line

VIN: WAUZZZGY8MA088967



Vehicle details

Manufacturer / Type / Model / Equipment

Audi A3 35 TDI Sportback S tronic S line

Vehicle Identification number WAUZZZGY8MA088967

Mileage (Read) 145,279 km

First registration 18 Mar 2021

Number of holders 1

Power / Engine displacement 110 kw / 1,968 ccm

Fuel type / Cylinder Diesel / 4

Gearbox / Number of gears Automatic / 7

Type of drive Front drive

Type of vehicle Saloon car

Colour / colour code Daytonagrau Perleffekt

Doors / Seats 5 / 5

Upholstery type Cloth / leather combination

Colour of upholstery Grey-Black



Vehicle details

Maintenance booklet / proof	digital proof / complete	Next maintenance in	4,900 km
Last service on / at	11/2025 at 136,622 km		
Key is / should be	2 / 2	FZG documents	ZB#2 (B) was available (copy), ZB#1 (S) was not available.
		Letter No.	GA751043
Previous damage / Accident	None detectable	Repainting	Detectable
Inspection conditions	sufficient	Lifting equipment / pit	No
Test drive	Not performed	Engine function test	Performed
Manufacturer key number/ type code number	0588 / BZQ 00287		
Emission standard	EURO6;WLTP;AP;PI/CI; M, N1 I	fine dust sticker	
Permitted total weight	1,965 kg	Empty weight	

Tyres

Mounted tyres

#	Tyre size	Type of tyre	Manufacturer	Tread depth
1)	205/55 R16 91H	Winter tyres on Light alloy	Pirelli	6mm / 6mm
2)	205/55 R16 91H	Winter tyres on Light alloy	Pirelli	7mm / 7mm

Replacement

Typ	Tyre size	Type of tyre	Manufacturer	Tread depth
Tirefit		Expiration date 01/2025		

Legend: Tread depth information for the left tire is listed first, for the right tire it is listed second on the axle in the direction of travel.

TÜV SÜD Auto Partner GmbH
Wiesenring 2
04159 Leipzig

Inspection location
ARS Altmann AG Automobillogistik
Römerstraße 3
64560 Riedstadt



Equipment



Standard equipment

- Airbag for driver and front passenger (with front passenger airbag deactivation)
- Anti-lock braking system (ABS) (with electronic brake force distribution (EBD), hydraulic brake assist)
- Traction control ASR (prevents wheel spin by reducing engine power, thus providing more stability and improved traction on the road)
- Audi pre sense front (within system limits, uses a front radar to detect the area in front of the vehicle and warns the driver with visual and acoustic signals to indicate a potential hazard from vehicles ahead, whether moving or stationary – pedestrian and cyclist detection registers, within system limits, when a pedestrian or cyclist is moving on or crossing the road. The system then warns the driver with an acoustic and visual signal)
- Exterior mirror housings in body color
- third brake light
- Headliner in steel grey fabric
- Roof edge spoiler S
- Digital instrument cluster - fully digital instrument cluster in 10.25 inches (speed, time, mileage, outside temperature, fuel warning with remaining range, shift indicator (for manual and automatic transmissions in manual mode), current radio station or music track, radio and media lists, classic-style display; if available: telephone menu (in conjunction with multifunction steering wheel), trip computer with short- and long-term memory, fuel-saving tips for more economical driving including break recommendations)
- Electromechanical parking brake (includes parking brake function when stationary, starting aid by automatic release when starting off and emergency braking function while driving via all four wheels)
- Electric windows front and rear
- Remote key (without Safe-Lock) (locks and unlocks doors, luggage compartment and fuel filler flap - including comfort closing/opening of windows)
- Transmission: S tronic 7-speed
- rear window wiper
- Interior lighting (front and rear roof module, including reading lights (incandescent bulbs) - glove box lighting (incandescent bulb) - LED trunk lighting right)
- Manual air conditioning (cools or heats the vehicle interior - air distribution and fan manually adjustable - manual recirculation mode - particle filter - dust and odor separating cabin air filter, which ensures a lower burden of dust particles, odors and allergens in the vehicle interior)
- Light and rain sensor
- Non-smoking version (with 12-volt socket and storage compartment)
- Wheel: Alloy wheels - 17 inch - 5-arm (8.0 J × 17, tire 225/45 R 17)
- Tire pressure monitoring system (visual and audible warning in case of pressure loss in one or more wheels)
- Tire repair kit (with tire sealant and compressor)
- Airbag: Front side airbags, with head airbag and interaction airbag in the front (front side airbags integrated into the seatbacks. With head airbag system: deploys in front of the side window area and can thus protect front and outer rear passengers in the event of a side impact.)
- Audi connect Emergency Call & Service with Audi connect Remote & Control (Audi connect Emergency Call Online, Breakdown Call, Audi Damage Service, Service Appointment Online, Parking Position, Vehicle Status, Push Notification, Anti-Theft Alarm System, Remote Control of Auxiliary Heater (not for A3 Sportback 30 g-tron, 40 TFSI e and S3), Remote Control of Charging (only for A3 Sportback 40 TFSI e), Remote Control of Climate Control (only for A3 Sportback 40 TFSI e))
- Electrically adjustable and heated exterior mirrors (with integrated LED indicator lights - left mirror glass aspherical, right convex - including heated windshield washer nozzles)
- Additive-free diesel particulate filter (DPF)
- Tachometer
- Rear parking aid (supports reversing and maneuvering within the system limits by acoustically indicating the distance to a detected object behind the vehicle. The measurement is carried out by ultrasonic sensors discreetly integrated into the bumper, which are activated when reverse gear is engaged.)
- Door sill trims with aluminum inlay at the front, illuminated, with S lettering
- Electric auxiliary air heater
- Electronic Differential Lock (EDS)
- Electronic Stability Control (ESC)
- Chassis: Sport chassis (Sport chassis with more dynamic spring and damper tuning and lowering by 15 mm, for more direct road contact and sportier handling.)
- Front and rear floor mats (made of velour in black)
- Removable luggage compartment cover
- Speed limiter (assists you in maintaining a constant driving style and adhering to speed limits by adjusting the maximum speed)
- Electrically operated child safety lock
- i-Size child seat attachment and top tether for the outer rear seats
- Rear headrests (3)
- Front headrests
- Steering wheel: Leather steering wheel in a 3-spoke design with multifunction controls and shift paddles (The steering wheel's height and reach are manually adjustable. For convenient operation of the extensive standard and optional infotainment features, the steering wheel is equipped with six multifunction buttons. Shift paddles allow manual gear changes.)



- Headlights (daytime running lights in LED technology - low beam in LED technology - high beam in LED technology - position lights in LED technology - turn signals in incandescent bulb technology)
- Electromechanical power steering (with speed-dependent steering assistance)
- 3-point automatic seat belts (3-point automatic seat belts for all seats, pyrotechnic belt tensioners, belt height adjustment at the front, belt force limiters on all outer seats)
- Seats: Rear seat backrest foldable (split, in a 40:60 ratio or fully foldable)
- Lane Departure Warning (within system limits, helps prevent unintentional lane departures. If the system is activated and ready, and the driver has not used the turn signal, the Lane Departure Warning helps prevent crossing detected lane markings by making corrective steering interventions. Additional steering wheel vibration can be set at the driver's request. Operating range from approximately 60 to a maximum of 250 km/h)

Extra equipment

- Business package (USB ports with charging function in the rear - Audi connect Navigation & Infotainment plus - Audi phone box - Audi virtual cockpit plus - Audi Smartphone Interface - MMI Navigation plus with MMI touch - Cruise control)
- Front seat heating (heats seat and backrest center section (standard seats in fabric), otherwise seat and backrest center section as well as seat side bolsters - individually adjustable in 3 stages for driver and front passenger via direct selection button on the climate control unit)
- LED headlights and LED taillights with dynamic turn signals (daytime running lights, low beam, high beam, position lights, turn signals, cornering lights, all-weather lights (to reduce glare in poor visibility conditions), motorway lights, static cornering lights, maneuvering lights (illumination of the maneuvering area at the front and sides when reversing), automatic dynamic headlight range control, intersection lights (in conjunction with MMI Nav. plus), dynamic rear turn signals, brake lights, tail lights, rear license plate lights, reversing lights)
- Seat covers in leather/synthetic leather mono.pur 550 combination with S embossing
- Seats: Folding rear seat backrest (three-section), with center armrest
- Wheel: Alloy wheels - 18 inch - 5-arm dynamic (8.0 J x 18, tires 225/40 R 18)

- Radio: MMI Radio plus (10.1-inch color display (1,540 x 720) including MMI touch operation, digital instrument cluster with 10.25-inch color display, Audi music interface with two USB-C ports, each with data and charging function, Bluetooth interface (hands-free calling and audio streaming), passive speakers with 4 speakers in the front and 2 in the rear (80 watts), AM/FM phase diversity, DAB+ speed-dependent volume adjustment, voice control system for controlling infotainment and vehicle functions, WLAN hardware)
- Seat covers in fabric (seat center panel in fabric - seat side bolsters, front center armrest (if ordered) and headrests in solid black fabric)
- Seats: Standard front seats (with manual adjustment of seat height, seat longitudinal position, backrest angle, headrest and seatbelt height)
- Start-stop system
- 12-volt power outlet in the rear
- 12V socket
- Daytime running light
- Glazing: Green tinted heat-insulating glazing (for rear window, door and side windows - rear window heated, with timer)
- Electronic immobilizer

- Assistance package with MMI Navigation plus with MMI touch (Audi pre sense front (pedestrian and cyclist detection) - High-beam assistant - Parking assistant with parking aid plus - Adaptive cruise assistant (supports the driver with acceleration, braking, maintaining speed and distance, and lane keeping) - Emergency assistant - Efficiency assistant - Camera-based traffic sign recognition - MMI Navigation plus with MMI touch (10.1-inch color display, natural language interaction, Audi connect Navigation & Info.) - Adaptive cruise control)
- Interior mirror, automatically dimming, frameless
- Paint finish: Daytona Gray Pearl Effect
- S line interior package (front sport seats with manual adjustment of seat height, seat fore/aft position, seat tilt, backrest tilt and belt height, as well as headrests; fabric Puls/mono.pur 550 synthetic leather upholstery; 3-spoke leather steering wheel with multifunction plus and shift paddles, including perforated steering wheel grips; leather armrests in the front and rear doors; dark aluminum spectrum decorative inlay; illuminated front door sill trims with aluminum inlays and S logo; black fabric headliner; front center armrest; floor mats)
- Steering wheel: Leather steering wheel in 3-spoke design with multifunction plus and shift paddles



Brief expert findings

Documents submitted	At the time of the inspection, the vehicle registration certificate Part 2 (title) was available, but the vehicle registration certificate Part 1 (document) was not. (Copy)
VIN comparison	The vehicle identification number (VIN) was read from the vehicle and its conformity with the submitted documents was confirmed by the undersigned during the inspection.
Inspection	The inspection conditions were sufficient for the assessment of the vehicle. No lifting equipment or pit was available for inspecting the vehicle. Therefore, inspection of the vehicle's underside was only possible to a limited extent.
Test drive	No test drive/shunting maneuver was carried out during the inspection of the vehicle.
Engine function test	An engine test run was performed.

Value reducing factors

No.	Component group	Description
1	Equipment	Tirefit filler - Expired - Replace
2	Door - front left side	Door edge - Scratch(es) - Smart repair
3	Vehicle glazing	Windscreen with lane departure assistant - Stone chips - Replace
4	Trim / covers	Brightware / decorative strip (L + R) - Paint defect - Paint

Wear and tear

No.	Component group	Description
1	Front bumper	Front bumper - Stone chips - No deduction

The vehicle shows signs of wear and tear commensurate with its age and use.

Missing parts

Description

2nd wheel set - 2nd wheel set (Sommerradsatz)

Repainting

No. Repainting

- 1 Side panel - rear right side, Professionally carried out, Invoice of repair done Non-existent
- 2 Door - front left side, Professionally carried out, Invoice of repair done Non-existent

Paint coat thickness measurement

Side panel - rear right side 202 µm | Door - front left side 214 µm

Order/Scope of Order

An order was placed to prepare a sales report for the described vehicle. This report includes the following:

- Description of key vehicle information
- Documentation of equipment features
(*Delivery by third-party service providers*)
- Documentation of damage, defects, missing parts
- Documentation of prior damage, unrepaired prior damage, repainting
- A brief visual or functional inspection of the equipment details, if possible.
(*Functional testing of driver assistance systems is not included in the scope of services!*)
- a photographic documentation of the vehicle



Basis for the order

This product is based on the guidelines for vehicle returns and valuations published by Alphabet Fleet GmbH. The expert makes the specific findings in each individual case objectively, within the framework of the prescribed standards, based on their own expertise.

The vehicle inspection takes place in a fully assembled, unassembled state.

Damage or defects that can only be detected during disassembly/diagnostic work or through further investigation remain within the realm of prognostic risk. An increased risk exists due to concealed defects caused by fraudulent misrepresentation and which were not identifiable by the expert.

Damage or defects resulting from normal use or wear and tear of the vehicle will be accepted in accordance with the applicable standard.

There was no explicit identification or monetary consideration of the expected features within the product.

Features which, in their nature and extent, slightly exceed normal use but do not constitute unacceptable damage, will be documented and indicated as signs of wear, if applicable.

Damage or defects that, according to the applicable standard, can no longer be attributed to normal use or wear and tear are listed under "Value Reducing Factors" in the product description.

Depending on the product specification, a monetary ID can be provided. If this takes place, the costs can be 100% d or pro rata depending on the vehicle's age and mileage.

Previous damages

No apparent prior damage that had been repaired could be found on the vehicle.

Comments

Die Unterbodenbesichtigung war nur ebenerdig & eingeschränkt möglich. Mehrkosten möglich.

- Winterradsatz ist kein Bestandteil des Auslieferungsumfangs.



Figure 1: Diagonal front (left)



Figure 2: Diagonal front (right)



Figure 3: Diagonal rear (left)



Figure 4: Diagonal rear (right)



Figure 5: Interior - front



Figure 6: Interior - rear



Figure 7: Instrument cluster



Figure 8: Instrument panel



Figure 9: Interior 360° view



Figure 10: Cargo area

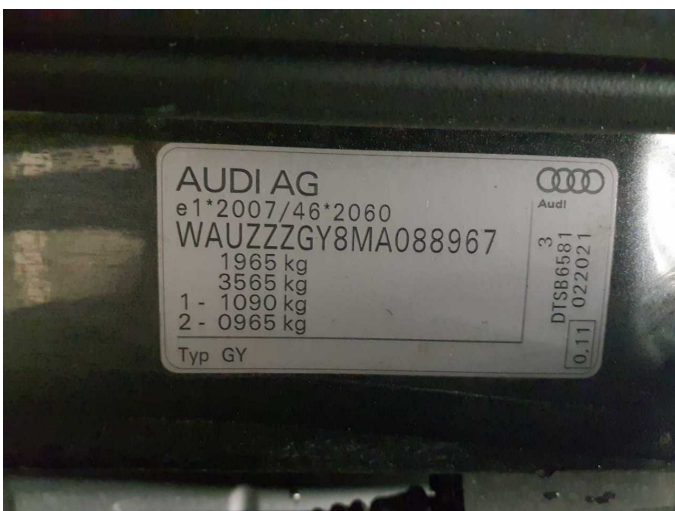


Figure 11: VIN



Figure 12: Mounted tyres



Figure 13: Documents

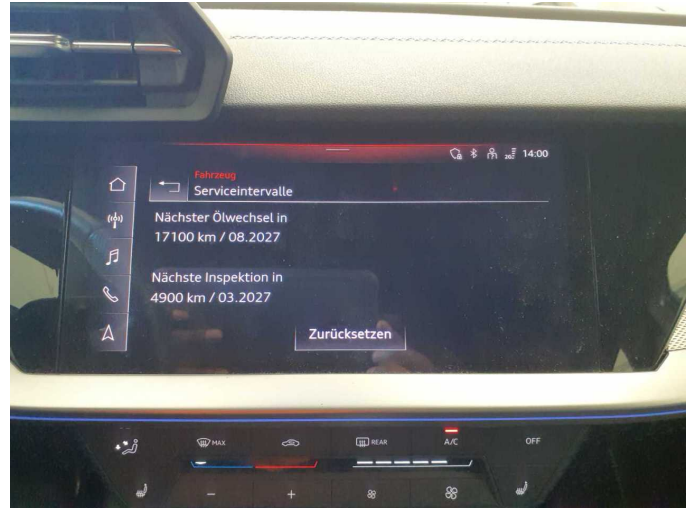


Figure 14: Documents



Figure 15: Navigation



Figure 16: Misc.



Figure 17: Misc.



Figure 18: Misc.



Figure 19: Misc.



Figure 20: Misc.



Figure 21: Misc.

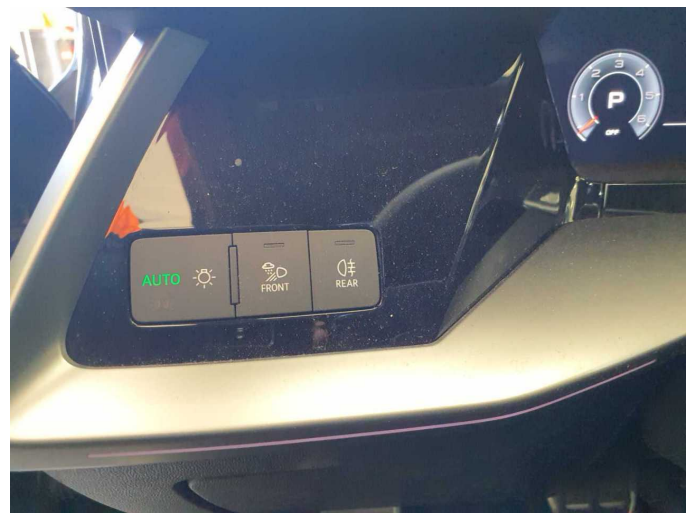


Figure 22: Misc.



Figure 23: Misc.



Figure 24: Misc.



Figure 25: Misc.



Figure 26: Misc.



Figure 27: Misc.

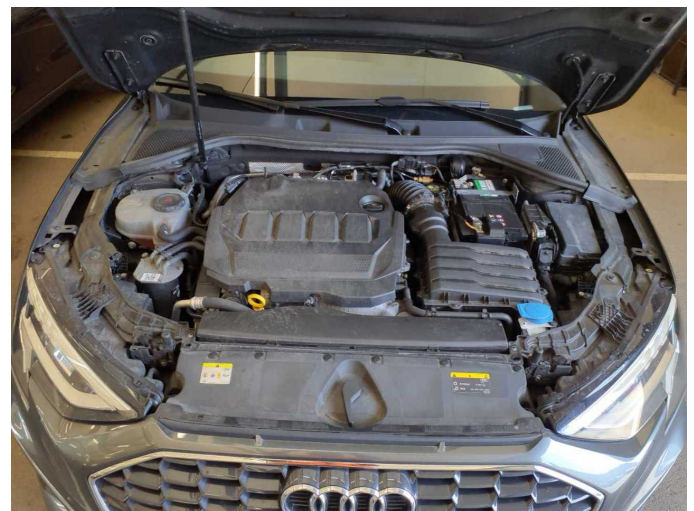


Figure 28: Misc.



Damage 1: Equipment: Tirefit filler - Expired - Replace



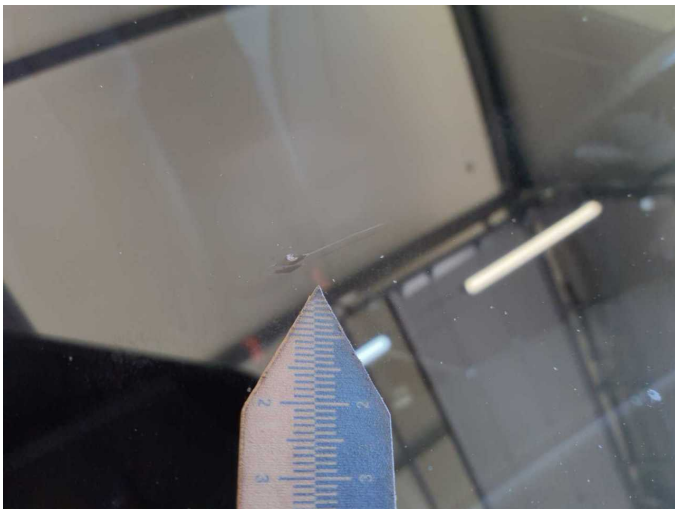
Damage 2: Door - front left side: Door edge - Scratch(es) - Smart repair



Damage 2: Door - front left side: Door edge - Scratch(es) - Smart repair



Damage 3: Vehicle glazing: Windscreen with lane departure assistant - Stone chips - Replace



Damage 3: Vehicle glazing: Windscreen with lane departure assistant - Stone chips - Replace



Damage 4: Trim / covers: Brightware / decorative strip (L + R) - Paint defect - Paint



Damage 4: Trim / covers: Brightware / decorative strip (L + R) - Paint defect - Paint



Damage 4: Trim / covers: Brightware / decorative strip (L + R) - Paint defect - Paint



Damage 4: Trim / covers: Brightware / decorative strip (L + R) - Paint defect - Paint



Repainting 1: Side panel - rear right side



Repainting 1: Side panel - rear right side



Repainting 2: Door - front left side



Repainting 2: Door - front left side



Wartungshistorie

(gemäß Auftraggeber Informationen)

Fahrgestellnummer: WAUZZZGY8MA088967
Hersteller / Modell: AUDI AUDI A3 35 TDI Sportback S tronic S line

Datum	KM-Stand	Beschreibung
21.05.2026	145.176	Batterie ern; Luftfiltereinsatz ern; Reparatur Sonstiges; Systemtest/Eigendiagnose
21.11.2025	136.622	Motoröl b. Wartung; Ölfilter ern; Ölwechsel; Reparatur Sonstiges; Wartung Sonstiges
06.03.2025	119.899	Bremse Sonstiges; Bremsflüssigkeit; Bremsflüssigkeit ern; Bremsklötze hinten; Bremsklötze vorne; Getriebeöl ern/prüfen; Reparatur Sonstiges; Systemtest/Eigendiagnose
25.11.2024	113.638	Keilrippenriemen; Reparatur Sonstiges; Schwingungsdämpfer ern; Systemtest/Eigendiagnose; Zahnriemen/Steuerkett ern
01.11.2024	112.365	Motoröl b. Wartung; Ölfilter ern; Regelwartungsdienst; Wartung Sonstiges
22.09.2023	85.155	Bremsbelagfühler ern; Bremse Sonstiges; Bremsscheiben hinten; Bremsscheiben vorne; Kraftstofffilter ern; Luftfiltereinsatz ern; Motoröl b. Wartung; Ölfilter ern; Regelwartungsdienst; Wartung Sonstiges
06.04.2023	69.374	Systemtest/Eigendiagnose
31.03.2023	69.072	Bremsflüssigkeit; Bremsflüssigkeit ern
23.09.2022	55.508	Motoröl b. Wartung; Regelwartungsdienst
13.12.2021	27.496	Motoröl b. Wartung; Regelwartungsdienst