

Expertise

Protocol number: 46303313
Order No. / Reference: 26503616-1
Inspection date: 24 Jun 2026

Manufacturer: Ford

Model: e-Transit 425 L4H3 68kWh Lkw HA Trend

VIN: WF0EXXTTRBRD57096



Vehicle details

Manufacturer / Type / Model / Equipment

Ford e-Transit 425 L4H3 68kWh Lkw HA Trend

Vehicle Identification number	WF0EXXTTRBRD57096
Mileage (Read)	7,929 km
First registration	18 Oct 2024
Number of holders	1
Next periodical technical inspection	12/2027 (Report not on hand)

Power / Engine displacement	100 kw /
-----------------------------	----------

Fuel type / Cylinder	Electric / 0
----------------------	--------------

Gearbox / Number of gears	Direct drive / 1
---------------------------	------------------

Type of drive	Rear drive
---------------	------------

Type of vehicle	Van
-----------------	-----

Colour / colour code	Frozen White
----------------------	--------------

Doors / Seats	4 / 3
---------------	-------

Upholstery type	Cloth
-----------------	-------

Colour of upholstery	Black-Anthracite
----------------------	------------------

readiness to drive	Roadworthy
--------------------	------------



Vehicle details

Maintenance booklet / proof	Non-existent	Next maintenance in	4 Monat(e)
Key is / should be	1 / 2	FZG documents	ZB#2 (B) was available (copy), ZB#1 (S) was not available.
		Letter No.	HH761098
Previous damage / Accident	None detectable	Repainting	None detectable
Inspection conditions	sufficient	Lifting equipment / pit	yes
Test drive	Not performed	Engine function test	Performed
readiness to drive	Roadworthy		
Manufacturer key number/ type code number	8566 / BWK 00374		
Permitted total weight	4,250 kg	Empty weight	

Tyres

Mounted tyres

#	Tyre size	Type of tyre	Manufacturer	Tread depth
1)	235/65 R16 121R	All-season tyres on Steel rim with wheel cover	Continental	8mm / 8mm
2)	235/65 R16 121R	All-season tyres on Steel rim with wheel cover	Continental	8mm / 8mm

Replacement

Typ	Tyre size	Type of tyre	Manufacturer	Tread depth
Tirefit		Expiration date 08/2028		

Legend: Tread depth information for the left tire is listed first, for the right tire it is listed second on the axle in the direction of travel.



Equipment

Standard equipment

- Increased axle load (front to 1850 kg)
- Anti-lock braking system (ABS) with electronic brake-force distribution (EBD) (Electronic safety and stability program (ESP) with traction control (TCS) - Hill start assist - Crosswind assist - Safety brake assist - Rollover protection - Emergency brake support including emergency brake light - additionally with trailer stabilization only in conjunction with trailer hitch (extra charge))
- Double-wing rear doors with a 256° opening angle, (without windows) (without rear windows, with holding magnets)
- Electronic parking brake
- FordPass Connect including live traffic information and 5G Wi-Fi hotspot modem (information about the current status or location of the vehicle as well as control of selected vehicle functions via smartphone with the FordPass app - Real-time traffic information (in conjunction with navigation system) - Wi-Fi hotspot (up to 5G/LTE, for up to 10 mobile devices))
- 8" instrument panel (semi-digital)
- Automatic climate control (with automatic temperature control)
- Cargo area floor: Vinyl floor covering "Easy Clean"
- Radio: 12" multifunction display and Ford SYNC 4 (communication and entertainment system with voice control, Bluetooth and USB interface - integration of various telephony functions - music playback - integration of storage media - emergency call assistant - Ford Power-Up software updates - AppLink (wireless) - support for Android Auto and Apple CarPlay - capacitive touchscreen technology - 15 different languages, graphic and acoustic)
- Wheels: Wheel trims
- Wheels: Steel wheels 6.5 J x 16 with 235/65 R 16 tires
- Headlight low beam: Halogen headlights with daytime running lights
- Side protection strips
- Seat belts (front seat belt tensioners and force limiters)
- Rear bumper with integrated step
- front bumper
- Digital tachograph (incl. 2 batteries)
- Partition wall (plastic) at the height of the B-pillar
- Recirculation/heating in the front
- Lashing eyes
- Immobiliser
- Central locking with remote control (2 keys, one of which has a remote control)
- Driver's side airbag
- Battery: Battery life, programming of battery life to 10 minutes
- On-board computer (with fuel consumption and mileage information (e.g. remaining range) as well as outside temperature display and Ford ECO mode)
- roof, high
- Headliner, driver's cab
- Third brake light
- Front electric windows (with quickdown/up function for driver's side)
- Ford Power Start function (keyless start)
- Heated windshield
- Warranty: 2-year Ford new car warranty including Ford Assistance mobility guarantee
- Speed limiter 90 km/h (not switchable)
- Transmission: 1-speed direct drive
- Lockable glove compartment with lid
- Interior lighting with delay function (with reading lights at the front)
- Paint finish: Solid color paint
- Cargo area lighting
- Package: Technology Package 6P (Exterior mirrors with turn signals, electrically adjustable, heated and folding - Blind Spot Assist incl. Cross Traffic Alert - Audio system - Fog lights - LED downlights - Pre-Collision Assist, camera and radar-based - Rear Emergency Brake Assist - Lane Keeping Assist incl. Lane Departure Warning - Extended Traffic Sign Recognition System - Front/Rear Parking Pilot System - Adaptive Cruise Control with Stop & Go function - Surround View Camera - Navigation)
- Wheels: Tire repair kit
- Windscreen wipers with rain sensor
- Sliding door at rear, right
- Rear mud flaps
- Power steering
- Seats: Seat package 8A (driver's seat, 4-way adjustable (forward/backward, backrest, tilt, height) - double passenger seat - height-adjustable headrests - driver's seat & passenger seat (outer seat), individually and variably heated - tray table on double passenger seat (foldable) - inner armrest for driver - lumbar support for driver - seat cover: fabric - leather steering wheel, heated)
- Heat-insulating glazing, lightly tinted
- Front overhead storage compartment



Extra equipment

- Weight reduction to 4,075 kg GVW
- Antenna cable mounting (above sliding door)
- Grab handle on the right inside of the rear door, including installation.
- SVO: Express Line package (plastic side wall cladding (4.8 mm) - wooden floor in the cargo area (9 mm) - airline rails on the side walls right and left at heights of 550/650 mm and 1575/1675 mm (rear/front drive) - 6 lashing eyes - partition (plastic))
- Airbag (passenger side)
- Rubber floor mats
- LED lights in the cargo area
- Wheels: All-season tires (suitable for winter use)
- Technology Package 10
- Second key, foldable, with remote control including central locking

Brief expert findings

Documents submitted	At the time of the inspection, the vehicle registration certificate Part 2 (title) was available, but the vehicle registration certificate Part 1 (document) was not. (Copy)
VIN comparison	The vehicle identification number (VIN) was read from the vehicle and its conformity with the submitted documents was confirmed by the undersigned during the inspection.
Inspection	The inspection conditions were sufficient for the assessment of the vehicle. Lifting equipment and/or a pit were available for examining the vehicle.
Test drive	No test drive/shunting maneuver was carried out during the inspection of the vehicle.
Engine function test	An engine test run was performed.
readiness to drive	The vehicle was roadworthy at the time of inspection.

Value reducing factors

No.	Component group	Description
1	Misc.	Main inspection - No evidence - No deduction
2	Trim / covers	Trim / covers - Loose - Repair
3	Roof	Roof - dent(s) - Smooth repair work
4	Sliding door, right	Sliding door - Scratch(es) - Smart repair
5	Sill - right side	Sill - dent(s) - Loss in value
6	Side panel - rear right side	Brightware - Scratch(es) - Replace
7	Front bumper	Front bumper - Scratch(es) - Loss in value
8	Body	Body (Folgekosten möglich) - Glued / labelled - De-glue / neutralise

Wear and tear

No.	Component group	Description
1	Boot lid / rear door	Rear door - left side - dent(s) - No deduction
2	Door - front left side	Door - Scratch(es) - No deduction
3	Door - front right side	Door - Scratch(es) - No deduction

The vehicle shows signs of wear and tear commensurate with its age and use.

Missing parts

Description

- Documents - Service book
- Equipment - Vehicle key



Order/Scope of Order

An order was placed to prepare a sales report for the described vehicle. This report includes the following:

- Description of key vehicle information
- Documentation of equipment features
(Delivery by third-party service providers)
- Documentation of damage, defects, missing parts
- Documentation of prior damage, unrepaired prior damage, repainting
- A brief visual or functional inspection of the equipment details, if possible.
(Functional testing of driver assistance systems is not included in the scope of services!)
- a photographic documentation of the vehicle

Basis for the order

This product is based on the guidelines for vehicle returns and valuations of light commercial vehicles published by Alphabet Fleet Management GmbH. The expert makes the specific findings in each individual case objectively, within the framework of the prescribed standards, based on their own expertise.

The vehicle inspection takes place in a fully assembled, unassembled state.

Damage or defects that can only be detected during disassembly/diagnostic work or through further investigation remain within the realm of prognostic risk. An increased risk exists due to concealed defects caused by fraudulent misrepresentation and which were not identifiable by the expert.

Damage or defects resulting from normal use or wear and tear of the vehicle will be accepted in accordance with the applicable standard.

There was no explicit identification or monetary consideration of the expected features within the product.

Features which, in their nature and extent, slightly exceed normal use but do not constitute unacceptable damage, will be documented and indicated as signs of wear, if applicable.

Damage or defects that, according to the applicable standard, can no longer be attributed to normal use or wear and tear are listed under "Value Reducing Factors" in the product description.

Depending on the product specification, a monetary ID can be provided. If this takes place, the costs can be 100% or pro rata depending on the vehicle's age and mileage.

Previous damages

No apparent prior damage that had been repaired could be found on the vehicle.

Comments

- Das Fahrzeug weist die fahrzeug- und nutzungsbedingt transsportertypischen Gebrauchsspuren auf.



Figure 1: Diagonal front (left)



Figure 2: Diagonal front (right)



Figure 3: Diagonal rear (left)



Figure 4: Diagonal rear (right)

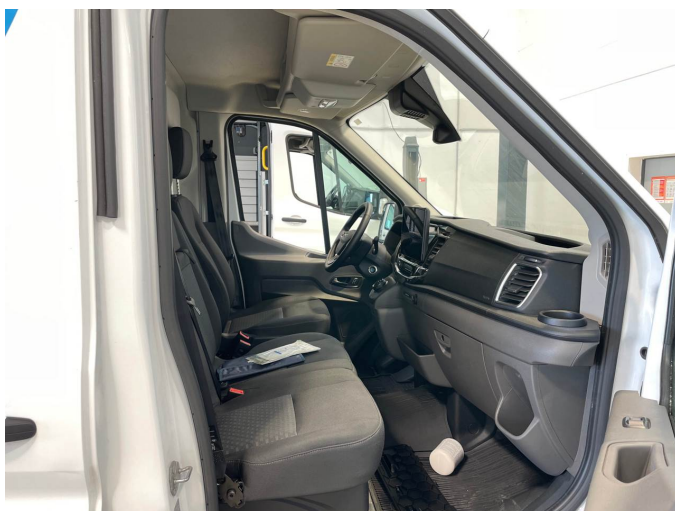


Figure 5: Interior - front



Figure 6: Interior - rear



Figure 7: Instrument cluster



Figure 8: Instrument panel



Figure 9: Interior 360° view



Figure 10: Cargo area



Figure 11: VIN



Figure 12: Mounted tyres



Figure 13: Documents

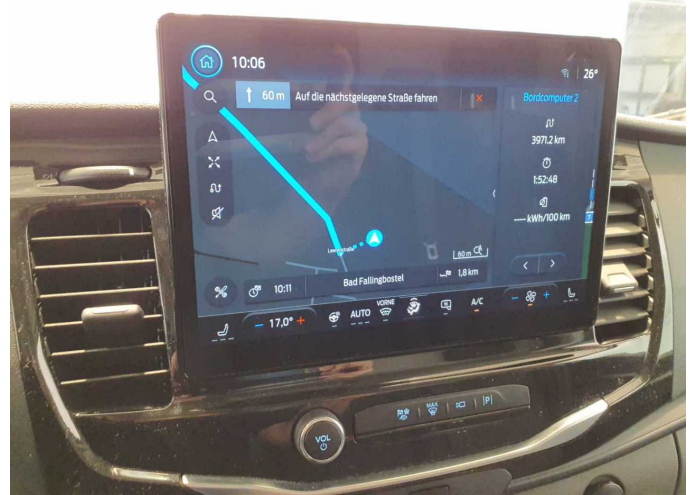


Figure 14: Navigation



Figure 15: Misc.



Figure 16: Misc.

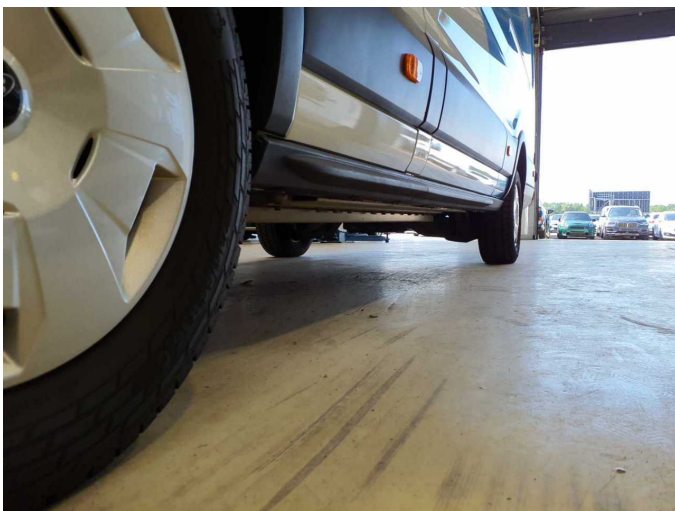


Figure 17: Misc.

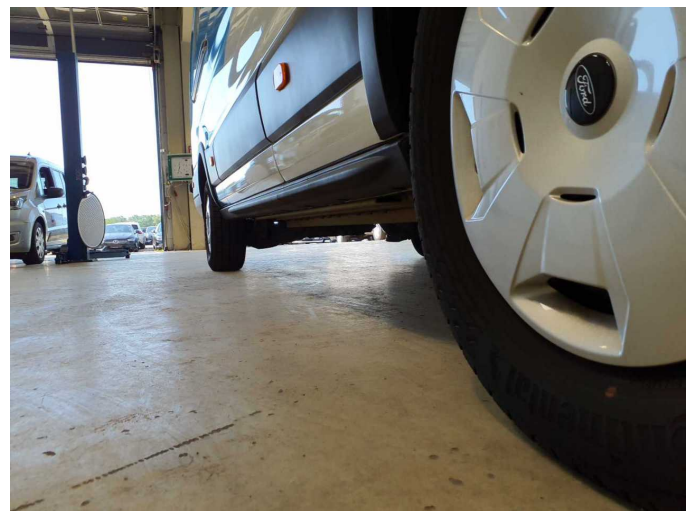


Figure 18: Misc.



Figure 19: Misc.



Figure 20: Misc.



Damage 2: Trim / covers: Trim / covers - Loose - Repair



Damage 3: Roof: Roof - dent(s) - Smooth repair work



Damage 3: Roof: Roof - dent(s) - Smooth repair work



Damage 4: Sliding door, right: Sliding door - Scratch(es) - Smart repair



Damage 4: Sliding door, right: Sliding door - Scratch(es) - Smart repair



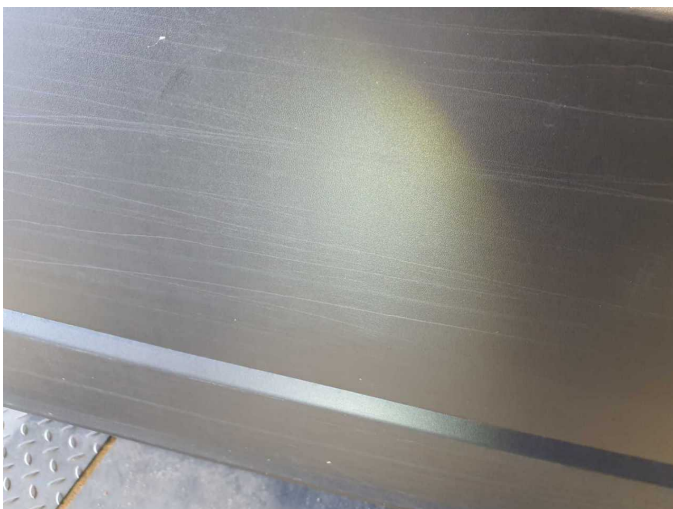
Damage 5: Sill - right side: Sill - dent(s) - Loss in value



Damage 5: Sill - right side: Sill - dent(s) - Loss in value



Damage 6: Side panel - rear right side: Brightware - Scratch(es) - Replace



Damage 6: Side panel - rear right side: Brightware - Scratch(es) - Replace



Damage 6: Side panel - rear right side: Brightware - Scratch(es) - Replace



Damage 7: Front bumper: Front bumper - Scratch(es) - Loss in value



Damage 7: Front bumper: Front bumper - Scratch(es) - Loss in value



Damage 8: Body: Body (Folgekosten möglich) - Glued / labelled - De-glue / neutralise



Damage 8: Body: Body (Folgekosten möglich) - Glued / labelled - De-glue / neutralise