

» Overview

Type:

Client:

Order number:

Order creation date:

Order completed:

Inspection location:

Visited by:

Present at appraisal:

Report number:

VIN:

WVWZZZ3C2RE005370

License plate:

Contract number:



Front Left 3/4



Rear Right 3/4



Mileage

» Costs & Value Summary

Repair costs (estimated)

Net cost (estimated)

» Vehicle Data

Vehicle category:	Passenger Car
Vehicle type:	EstateCar
Make:	Volkswagen
Model:	Passat
Manufacturers and type code:	0603 / BQS
Date of first registration:	06.10.2023
Mileage:	119,844 km
Proof of mileage:	ReadOff
Exterior colour:	Deep Black Perleffekt
Roof colour:	Deep Black Perleffekt
Propulsion:	Front
Fuel:	Diesel
Engine size (cc):	2,000 ccm
Performance:	110 kW (150 PS)
Length:	
Height:	
Width:	
Permitted total weight:	
Wheelbase:	
Number of powered axles:	2
Cylinders:	4
Euronorm:	Euro 6
Number of doors:	4
Number of seats:	5
Gearbox:	Automatic 7-speed
Upholstery type:	Lining fabrics
Interior colour:	Titanschwarz/Titanschwarz/Titanschwarz
Number of keys:	1

» Documents & Maintenance

Statutory inspection date:	
Registration certificate available:	No
Registration certificate received:	No
License plate:	None
Maintenance book:	Digital
Maintenance:	Not testable
Maintenance last date:	
Maintenance last mileage:	

12-V outlet in center console in rear and in luggage compartment

2 beverage holders in front with cover

2 USB-C ports in the front, charging capacity up to 45 W

3 head restraints in rear

3-point seat belt for center rear seat

3-point seat belts for outer rear seats

3-point seat belts in front with height adjustment and seat belt pretensioners

4 AirStop® all-season tires 215/60 R16

4 alloy wheels "Sepang" 6.5J x 16

4-cylinder diesel engine 2.0 l

4-cylinder diesel engine 2.0 l TDI, 110 kW

7-speed automatic transmission or dual-clutch transmission DSG, note: PR family EDF

8 speakers

Adaptive Cruise Control ACC stop & go incl. speed limiter

Air Care Climatronic 3 zone automatic climate control with enhanced air filter with activated carbon

AirStop® all-season tires 215/60 R16

Alloy spare wheel with original equipment tire

Alternator 140 A

App-Connect Wireless for Apple CarPlay and Android Auto

Aspherical exterior mirror on driver side

Aut. headlight control with separate daytime running light, entry lighting and manual exit lighting

Auto-dimming interior rearview mirror

Automatically-heated washer nozzles in front

Autonomous Emergency Braking Front Assist (for Adaptive Cruise Control ACC up to 210 km/h)

Basic equipment variant

Battery 420 A (70 Ah)

Black roof rails

Body-colored lower side trims

Bumpers with body-colored decorative trims

Business

Carpet mats in front and rear

Carrier frequency 433.92 MHz-434.42 Mhz

Category 0

Child safety lock

Chrome trims on the side windows

Comfort seats in front

Curtain airbag system for front and rear passengers incl. side airbags in front

Decorative inserts "Cross Hatch" for dashboard and door trim panels

Decorative inserts "Piano Black" for center console

Digital radio reception DAB+

Disc brakes in front

Disc brakes in rear

Diversity antenna for FM reception

Door and side trim panel in foam film and woven fabric

Driver alert system

Driver and front passenger airbag with front passenger airbag deactivation

Driving on the right

Dual-clutch transmission DSG DQ381

Dynamic Road Sign Display

Electric auxiliary air heater

Electromechanical parking brake with Auto Hold function

Electromechanical speed-sensitive power steering

Electronic engine sound

Electronic immobilizer

Electronic Stability Control and electromechanical brake booster

Elimination of nameplate for engine designation on luggage compartment lid

Emergency call service, 10-year contract duration as of initial delivery, condition: mob. phone network available

Emission standard EU6 AP

Equipment options subset for Germany

Ext. mirror w/surround lighting a. frontpassenger ext. mirror lowering function, folding/heated, auto-dimming on dr. side

First aid kit, warning triangle and safety vest

Folding luggage compartment floor

Folding trailer hitch, with electric release

Front center armrest, height- and longitudinally adjustable, w/ storage comp., 2 vents w/ chrome louvers in rear

Front seats with height adjustment, ergoComfort seat on driver side, with electrical backrest adjustment

Front vent and rotary light switch illuminated, with chrome bezel

Front-wheel drive

Fuel system for diesel engine

Fuel tank with a volume of 66 l

Gearshift knob in leather

Headlight range control

Heated front seats

Hill Start Assist

Illuminated vanity mirror in sun visors, extractable sun visors	Plastic scuff plates in door apertures
Initial standard fuel filling	Preparation for We Connect and We Connect Plus or VW Connect and VW Connect Plus
Inserts of front seats and outer rear seats in fabric "Business"	Privacy glass for rear side windows and rear window
Instrument cluster with electronic speedometer, odometer and trip odometer, tachometer	Proactive passenger protection system in combination with Front Assist
Interior lights with switch-off delay and dimmer, 2 LED reading lights in front and 2 in rear	Radio
ISOFIX anchorage points for mounting of 2 child seats on rear bench seat, also for i-Size child seats	Rain sensor
Keyless Start without SAFELOCK	Rear exhaust tailpipe (standard)
Laminated safety glass windshield, heat- and sound-insulating	Rear fog light on one side, back-up light on both sides
Lane keeping system Lane Assist	Rear shock absorption, basic version 1
Leather-wrapped multi-function steering wheel with shifting paddles	Refrigerant R1234yf
LED entry/warning lights in front doors	Regional code " ECE " for radio
LED front fog lamps and cornering light	Remote unlocking for tailgate/trunk lid
LED headlamps with LED separate daytime running light	Right exterior mirror, convex
LED light unit in front footwell	Safety-optimized front head restraints, longitudinally and height adjustable
LED rear combination lamps	Service indicator 30 000 km or 2 years (variable)
Left-hand drive	Shock absorption in front
LongLife Service Regime	Small navigation system M&I (Media & Internet package)
Luggage compartment cover extractable and removable	Smoker's package: Ashtray and cigarette lighter in front
Lumbar supports in front, power-adjustable on driver side	Special identification label for EC for M1 passenger vehicles
Manual in German (Germany)	Standard battery/alternator capacity
Mass damper for steering wheel, 36 Hz	Standard climatic zones
Mistral Gray headliner	Standard engine starter
Mobile phone interface "Comfort" with inductive charging feature	Standard manufacturing sequence
Model update, week 22	Standard paint coating
Multifunction camera	Standard pedal cluster
Multi-function display "Premium" with multi-color display	Standard roof
Navigation system "Discover Media" incl. Streaming & Internet	Standard wheel bolts
Net partition	Start-stop system with regenerative braking
No special edition	Suspension range 34 installation control only, no requirement forecast
No special purpose vehicle, standard equipment	Textile luggage compartment lining
Non-folding front passenger seat backrest	Tire Pressure Monitoring System
Not hot country	Tires without specification of tire brand
Online service, with OCU, with head unit coding, without engine immobilizer interconnection	Tool kit and jack
Operating permit, alteration	Two-tone horn
Operating voltage 12 V	Type approval country Germany
Park Distance Control - warning signals for obstacles in the front and rear	Unsplit rear bench seat, asymmetric folding backrest, center armrest with storage comp. and load-through hatch
Part set without country-specific prescriptive standard	Vehicle class differentiation -3G0-
Pedestrian Monitoring	Vehicles with special upgrade measures
Plastic loading edge protection	Wagon

Warning signal and warning lamp for front and rear seat belts not fastened	Without vehicle inlet
Weight range 4 installation control only, no requirement forecast	Without voice control
Wheelbase	
Winter package	
With electronic steering column lock	
Without activated carbon canister with SCR	
Without Adaptive Chassis Control	
Without add. lights (interior lighting)	
Without additional front underbody guard	
Without additional tires	
Without alternative drive system	
Without auxiliary heater/parking heater	
Without camera systems/accident sensors	
Without CD/DVD for navigation	
Without charging cable	
Without child seat	
Without clock	
Without delivery equipment	
Without differential lock	
Without ECO function	
Without electric motor (hybrid)	
Without fire extinguisher	
Without front passenger seat control	
Without garage door opener	
Without headlamp washer system	
Without head-up display	
Without integrated toll system	
Without lane change assist	
Without light control	
Without locking and starting systems	
Without preparation for rotating beacon/siren combination	
Without preparation for two-way radio installation	
Without preparation for VTS (vehicle tracking system)	
Without rear spoiler	
Without roll-up sunshade	
Without seat ventilation/massage seat	
Without second battery	
Without special body measures	
Without surface protection, with additional transport protection measures	
Without tie down straps/net/pocket	

» Tyres

MOUNTED TYRES

Make	Location	Position	Type	Rim	Dimensions	Profile depth
Falken	Front	Left	All season	Aluminium	215/60 R 16 99 V	4.0 mm
Falken	Front	Right	All season	Aluminium	215/60 R 16 99 V	4.0 mm
Falken	Rear	Left	All season	Aluminium	215/60 R 16 99 V	7.0 mm
Falken	Rear	Right	All season	Aluminium	215/60 R 16 99 V	7.0 mm

Permitted: Yes

Roadworthy: Yes

SPARE/EMERGENCY TYRE & ACCESSORIES

Spare tyre provided: Yes

Make	Location	Position	Type	Rim	Dimensions	Profile depth
Continental	Spare		All-seasons	Aluminium	215/60 R 16 95 V	8.0 mm

Permitted: Yes

Roadworthy: Yes

Toolkit present: Yes

Jack present: Yes

» Devaluation Factors

Nr	Location	Damage type	Repair type	Repair cost	Net cost
1	Bonnet	Dent(s) and scratch(es)	Repair and paint (complete)	€ 705.50	€ 444.47
2	Wing RL	Dent(s)	Repair and paint (complete)	€ 482.25	€ 303.82
3	Wing RR	Dent(s) and scratch(es)	Repair and paint (partial)	€ 331.06	€ 208.57
4	Roof rail L	Dent(s)	Repair and paint (complete)	€ 330.75	€ 208.37
5	Preparationtime bodywork	Paint preparation	Execute	€ 270.75	€ 170.57
6	Bumper spoiler F	Scratch(es)	Paint	€ 209.56	€ 132.02
7	Door FR	Dent(s)	Spot repair	€ 150.00	€ 150.00
8	Bumper R	Scratch(es)	Smart repair	€ 120.00	€ 120.00
9	Inner door sill RL	Scratch(es)	Smart repair	€ 120.00	€ 120.00
10	Door RR	Residue	Polish	€ 30.00	€ 30.00
11	Door FL	Residue	Polish	€ 30.00	€ 30.00
Total without VAT:				€ 2,779.87	€ 1,917.82

» Usage Damages

Nr	Location	Damage type	Repair type	Repair cost	Net cost
1	Steering wheel	Scratch(es)	Acceptable		
2	Boot lid covering R	Scratch(es)	Acceptable		
3	Windscreen	Stone chip(s)	Acceptable		
Total without VAT:				€ 0.00	€ 0.00

» Missing Parts

Nr	Location	Damage type	Repair type	Repair cost	Net cost
1	Ignition key	Missing	Replace	€ 300.00	€ 300.00
Total without VAT:				€ 300.00	€ 300.00

» Commercial devaluation

Known previous damages:	No
Previous damages detectable:	No
Repainting present:	No
Paint thickness measurement performed:	Yes - no abnormalities/deviations

PAINTHICKNESS MEASUREMENT RESULTS

The measured values were in the usual range.

At least 3 measurements were carried out per component.

» Notes On The Assessment

Details of the assignment and the scope of the assessment:	<p>The order was placed to prepare a condition report on the described vehicle.</p> <p>The vehicle condition assessment was carried out in accordance with the order on the basis of the standards for vehicle assessments specified by the client. The expert makes the findings in the individual case on the basis of his own expertise and at his own expert discretion.</p>
Vehicle identification:	<p>WVWZZZ3C2RE005370</p> <p>VIN check, no comparison with documents possible</p>
Vehicle condition:	<p>Dirty</p>
Inspection condition:	<p>Restricted</p>
Lifting platform/lifting equipment used:	<p>No</p>
Testdrive carried out:	<p>No</p>
Engine test carried out:	<p>Yes</p>

» Remarks

This copy was generated electronically. It is valid without an original signature.

» Commercial Pictures



Front Left 3/4



Front Right 3/4



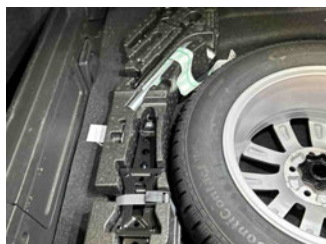
Rear Left 3/4



Rear Right 3/4



Mileage



Tools



Sill outer L



Sill outer R



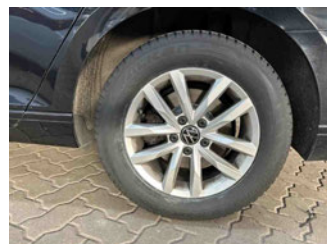
Chassis nr



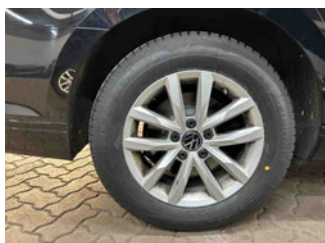
Wheel FL



Wheel FR



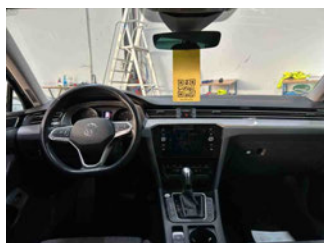
Wheel RL



Wheel RR



Spare wheel



Central console



Engine compartment



Documents



Interior arrangement



Maintenance



Towbar



History Maintenance



Interior - front



Interior - rear

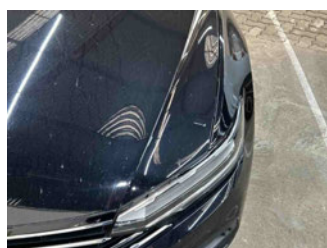


GPS/Radio

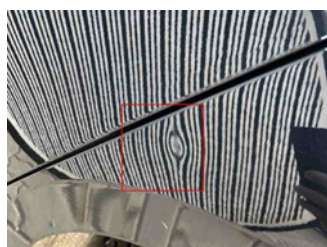
» Devaluation Damages

DEVALUATION FACTORS

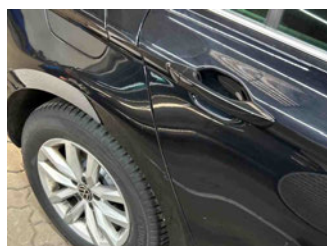
1 - Bonnet - Dent(s) and scratch(es) - Repair and paint (complete)		Repaircosts:	€ 705.50
		Net cost:	€ 444.47
Paint material			€ 147.50
Body work	18 WU		€ 198.00
Paint work	30 WU		€ 360.00



2 - Wing RL - Dent(s) - Repair and paint (complete)		Repaircosts:	€ 482.25
		Net cost:	€ 303.82
Paint material			€ 66.25
Body work	16 WU		€ 176.00
Paint work	20 WU		€ 240.00



3 - Wing RR - Dent(s) and scratch(es) - Repair and paint (partial)		Repaircosts:	€ 331.06
		Net cost:	€ 208.57
Paint material			€ 43.06
Body work	12 WU		€ 132.00
Paint work	13 WU		€ 156.00



4 - Roof rail L - Dent(s) - Repair and paint (complete)		Repaircosts:	€ 330.75
		Net cost:	€ 208.37
Paint material			€ 18.75
Body work	12 WU		€ 132.00
Paint work	15 WU		€ 180.00

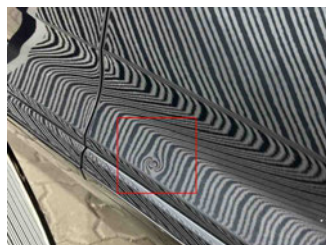
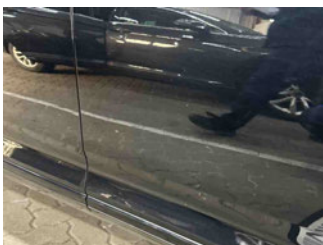


5 - Preparationtime bodywork - Paint preparation - Execute		Repaircosts:	€ 270.75
		Net cost:	€ 170.57
Fixed Price			€ 270.75

6 - Bumper spoiler F - Scratch(es) - Paint		Repaircosts:	€ 209.56
		Net cost:	€ 132.02
Paint material			€ 41.56
Paint work	14 WU		€ 168.00



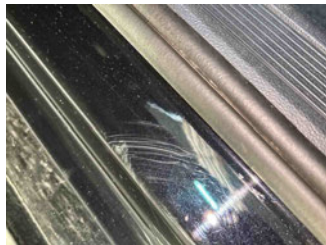
7 - Door FR - Dent(s) - Spot repair		Repaircosts:	€ 150.00
		Net cost:	€ 150.00
Fixed Price			€ 150.00



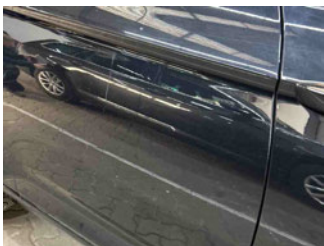
8 - Bumper R - Scratch(es) - Smart repair	Repaircosts:	€ 120.00
	Net cost:	€ 120.00
Fixed Price		€ 120.00



9 - Inner door sill RL - Scratch(es) - Smart repair	Repaircosts:	€ 120.00
	Net cost:	€ 120.00
Fixed Price		€ 120.00



10 - Door RR - Residue - Polish	Repaircosts:	€ 30.00
	Net cost:	€ 30.00
Fixed Price		€ 30.00



11 - Door FL - Residue - Polish	Repaircosts:	€ 30.00
	Net cost:	€ 30.00
Fixed Price		€ 30.00



USAGE DAMAGES

1 - Steering wheel - Scratch(es) - Acceptable	Repaircosts:	€ 0.00
	Net cost:	€ 0.00



2 - Boot lid covering R - Scratch(es) - Acceptable	Repaircosts:	€ 0.00
	Net cost:	€ 0.00



3 - Windscreen - Stone chip(s) - Acceptable	Repaircosts:	€ 0.00
	Net cost:	€ 0.00



MISSING PARTS

1 - Ignition key - Missing - Replace	Repaircosts:	€ 300.00
	Net cost:	€ 300.00

Parts Price	€ 300.00
-------------	----------

Quantity	1
----------	---

