

Expertise

Protocol number: 45483134
Order No. / Reference: 26366876
Inspection date: 18 May 2026

Manufacturer: Mercedes-Benz

Model: V 250 d lang 4Matic 9G-TRONIC

VIN: W1VVMKSZ1R4379249



Vehicle details

Manufacturer / Type / Model / Equipment

Mercedes-Benz V 250 d lang 4Matic 9G-TRONIC

Vehicle Identification number W1VVMKSZ1R4379249

Mileage (Read) 29,439 km

First registration 7 Mar 2024

Number of holders 1

Power / Engine displacement 140 kw / 1,950 ccm

Fuel type / Cylinder Diesel / 4

Gearbox / Number of gears Automatic / 9

Type of drive All-wheel drive

Type of vehicle Van

Colour / colour code Obsidianschwarz metallic

Doors / Seats 4 / 7

Upholstery type Cloth

Colour of upholstery Black-Anthracite



Vehicle details

Maintenance booklet / proof	digital proof / complete	Next maintenance in	659 Tag(e)
Last service on / at	03/2026 at 29,230 km		
Key is / should be	2 / 2	FZG documents	ZB#2 (B) was available (copy), ZB#1 (S) was not available.
		Letter No.	HB940362
Previous damage / Accident	Detectable	Repainting	None detectable
Inspection conditions	sufficient	Lifting equipment / pit	yes
Test drive	Not performed	Engine function test	Performed
Manufacturer key number/ type code number	2222 / ABM 02152		
Emission standard	EURO6;WLTP;AP;PI/CI; M, N1 I	fine dust sticker	
Permitted total weight	3,100 kg	Empty weight	

Tyres

Mounted tyres

#	Tyre size	Type of tyre	Manufacturer	Tread depth
1)	225/55 R17 101V	Winter tyres on Light alloy	Continental	6mm / 6mm
2)	225/55 R17 101V	Winter tyres on Light alloy	Continental	7mm / 7mm

Additional tyres

#	Tyre size	Type of tyre	Manufacturer	Tread depth
1)	225/55 R17 101V	Summer tyres on Light alloy	Continental	5mm / 5mm
2)	225/55 R17 101V	Summer tyres on Light alloy	Continental	6mm / 6mm

Legend: Tread depth information for the left tire is listed first, for the right tire it is listed second on the axle in the direction of travel.

TÜV SÜD Auto Partner GmbH
Wiesenring 2
04159 Leipzig

Inspection location
Hartmann Compound Professionals
Arnoldschacht 9-11
44894 Bochum



Equipment



Standard equipment

- Exhaust gas purification SCR Generation 4
- ADAPTIVE BRAKE with dry braking in wet conditions and hill start assist
- Driver airbag
- Airbag: Windowbag for driver and front passenger
- 4MATIC all-wheel drive
- Armrests for seating in the passenger compartment
- Attention Assistant
- Outdoor temperature display
- Illuminated mirrors for sun visor
- Lighting in the rear grab handle
- BlueEFFICIENCY package
- Tachometer
- ECO start/stop function
- Electronic Stability Program (ESP)
- Chassis: AGILITY CONTROL chassis with selective damping system
- Front right window, fixed in side wall/sliding door
- electric parking brake
- Generator management
- Seatbelt warning device for front passenger seat
- Grab handle for entry
- Lockable and illuminated glove compartment
- Interior headliner in grey fabric
- Mechanical child safety lock in the sliding doors
- Instrument cluster with color display
- Comfort roof control unit
- Front headrests
- Steering column mechanically adjustable in height and length
- Headlight range control
- Center console with storage compartment
- Package: Aerodynamics
- Upholstery: Santos fabric
- Radio accessories: Digital radio (DAB)
- Full wheel cover
- Wheels: Comfort tires
- Windscreen wipers with rain sensor
- Sliding door, right
- electric power steering
- Seat: Single seat, 1st rear row, left
- Seat: Single seat, 2nd rear row, left
- Seat: Comfort driver's seat
- Seats: Seat rail system with quick-release fasteners
- 12V socket
- Bumpers and attachments painted in body color
- Carpet for vehicle interior front
- Touchpad
- First aid kit
- Warm air duct to the passenger compartment
- Maintenance interval indicator "ASSYST"
- Central locking with radio remote control
- Screw-in towing eye front/rear
- Adaptive brake light flashing
- Passenger airbag
- Airbag: Thorax-pelvis sidebags for driver and front passenger
- Outer armrests for individual seats, 2nd rear row
- Increased gross vehicle weight to 3,100 kg
- Exit lights in the side doors
- Battery: fleece battery 12 V / 92 Ah
- Front footwell lighting
- Hill start assist
- Diesel particulate filter
- Third brake light
- Electrical components for trailer socket
- Driving light assistant
- Vehicle key: Electronic key in chrome look
- Front left window, fixed in side wall/sliding door
- Electric window regulator comfort front/front.
- Generator 14 V / 250 A
- Transmission: 9-speed automatic, 9G-TRONIC
- Seatbelt warning device for driver's seat
- Grab handle in the rear
- Tailgate with window including rear window heating
- ISOFIX child seat attachment points in the rear and Top Tether attachment points on the back of the rear seat backrest
- Communication module (LTE) for digital services
- Steering wheel: Multifunction steering wheel with trip computer
- trunk light
- Mercedes-Benz emergency call system
- Navigation accessories: Pre-installation for navigation
- Breakdown management
- Radio accessories: 2-way speakers front and rear
- Radio: MBUX multimedia system Mid
- Tire pressure monitoring
- Disc brakes on front and rear axles
- Halogen headlights
- Crosswind Assist
- 3-point seat belts
- Seat: Single seat, 1st rear row, right
- Seat: Single seat, 2nd rear row, right
- Seat: Standard passenger seat with height and backrest adjustment
- 12V socket in the trunk/cargo area
- Cruise control and variable speed limiter SPEEDTRONIC
- Carpet in the rear
- Ambient lighting tailgate
- Pre-installation for Remote Services Plus
- Warning triangle
- Electronic immobilizer
- Decorative elements piano lacquer look, black, glossy



Extra equipment

- Active Distance Assist DISTRONIC (accelerates independently and brakes with a maximum of half braking power - can be activated by operating the cruise control lever from a speed of 20 km/h - operates in a speed range of 0 to 200 km/h - incl. Active Brake Assist and HOLD function)
- Fuel tank with larger volume 70 l
- Paint finish: Metallic
- leather steering wheel
- Package: Assistance (including Lane Keeping Assist, Blind Spot Assist, Active Brake Assist and PRE-SAFE system)
- Package: Mirror package (including automatically dimming interior and exterior mirrors on the driver's side, automatically folding exterior mirrors on the left and right, and ambient lighting)
- Passenger seat heating
- Traffic Sign Assist (The Traffic Sign Assist can support the driver by continuously displaying the detected speed limits, entry and overtaking prohibitions, and their cancellation.)
- Electric vent windows in the rear passenger compartment (left and right in the passenger compartment)
- Tinted rear windows, black glass
- Luggage securing net
- HOLD function
- TEMPATIC automatic climate control in the rear (additional heat exchanger/evaporator with blower in the passenger compartment)
- Navigation: Navigation Plus (including live traffic information)
- Package: Parking package with 360° camera (including PARKTRONIC with HOLD function)
- Wheels: Tires 225/55 R 17
- Wheels: Alloy wheels 7 J x 17
- Seats: 3-seater comfort bench seat, 1st row (with folding outer seat)
- Heated driver's seat
- Decorative elements in piano black look, glossy, in conjunction with AMG Line or Design Package

Brief expert findings

Documents submitted	At the time of the inspection, the vehicle registration certificate Part 2 (title) was available, but the vehicle registration certificate Part 1 (document) was not. (Copy)
VIN comparison	The vehicle identification number (VIN) was read from the vehicle and its conformity with the submitted documents was confirmed by the undersigned during the inspection.
Inspection	The inspection conditions were sufficient for the assessment of the vehicle. Lifting equipment and/or a pit were available for examining the vehicle.
Test drive	No test drive/shunting maneuver was carried out during the inspection of the vehicle.
Engine function test	An engine test run was performed.

Value reducing factors

No.	Component group	Description
1	Rear bumper	Rear bumper - Scratched - Paint
2	Door - front left side	Door - Dent / paintcoat damage - Repair and paint
3	Boot lid / rear door	Boot lid - Scratched - Paint

Wear and tear

No.	Component group	Description
1	2nd wheel set	2 alloy rims - Scratched - No deduction
2	2nd wheel set	3 tyres (225.55.17 Sommer) - Broken / torn - No deduction

The vehicle shows signs of wear and tear commensurate with its age and use.

Previous damages

No.	Previous damage	Extent of damage (Net)
1	Side right, Provided by user / customer	



Accident damages

No. Accident

1 Side right

Order/Scope of Order

An order was placed to prepare a sales report for the described vehicle. This report includes the following:

- Description of key vehicle information
- Documentation of equipment features
(*Delivery by third-party service providers*)
- Documentation of damage, defects, missing parts
- Documentation of prior damage, unrepaired prior damage, repainting
- A brief visual or functional inspection of the equipment details, if possible.
(*Functional testing of driver assistance systems is not included in the scope of services!*)
- a photographic documentation of the vehicle

Basis for the order

This product is based on the guidelines for vehicle returns and valuations published by Alphabet Fleet GmbH. The expert makes the specific findings in each individual case objectively, within the framework of the prescribed standards, based on their own expertise.

The vehicle inspection takes place in a fully assembled, unassembled state.

Damage or defects that can only be detected during disassembly/diagnostic work or through further investigation remain within the realm of prognostic risk. An increased risk exists due to concealed defects caused by fraudulent misrepresentation and which were not identifiable by the expert.

Damage or defects resulting from normal use or wear and tear of the vehicle will be accepted in accordance with the applicable standard.

There was no explicit identification or monetary consideration of the expected features within the product.

Features which, in their nature and extent, slightly exceed normal use but do not constitute unacceptable damage, will be documented and indicated as signs of wear, if applicable.

Damage or defects that, according to the applicable standard, can no longer be attributed to normal use or wear and tear are listed under "Value Reducing Factors" in the product description.

Depending on the product specification, a monetary ID can be provided. If this takes place, the costs can be 100% d or pro rata depending on the vehicle's age and mileage.

Previous damages

Non-repaired previous damages were found at the vehicle. The necessary repair costs are listed in the expert report or if necessary, are listed in detail in a separately enclosed repair cost calculation.

Comments

Der beiliegende Radsatz gehört nicht zur Ausstattung.



Figure 1: Diagonal front (left)



Figure 2: Diagonal front (right)



Figure 3: Diagonal rear (left)



Figure 4: Diagonal rear (right)



Figure 5: Interior - front



Figure 6: Interior - rear



Figure 7: Instrument cluster



Figure 8: Instrument panel



Figure 9: Interior 360° view



Figure 10: Cargo area



Figure 11: VIN



Figure 12: Mounted tyres



Figure 13: Documents



Figure 14: Documents



Figure 15: Documents



Figure 16: Additional tyres

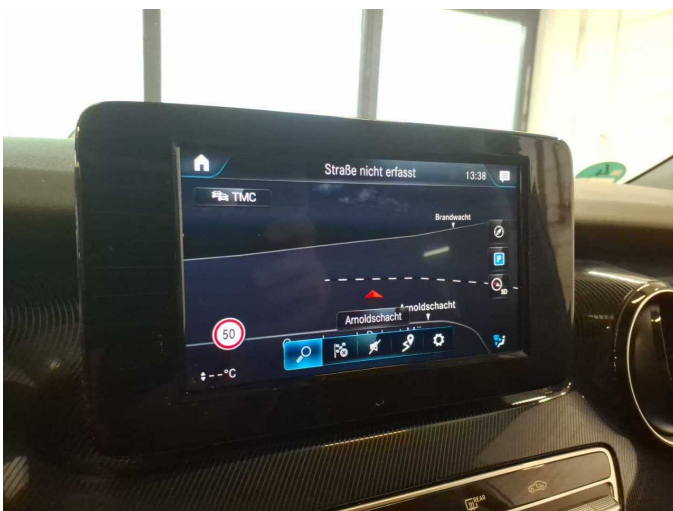


Figure 17: Navigation

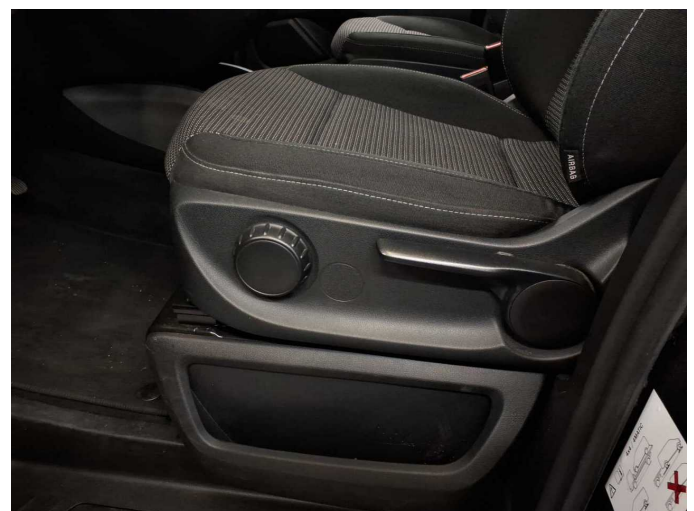


Figure 18: Misc.



Figure 19: Misc.



Figure 20: Misc.



Figure 21: Misc.



Figure 22: Misc.



Figure 23: Misc.



Figure 24: Misc.



Figure 25: Misc.



Figure 26: Misc.

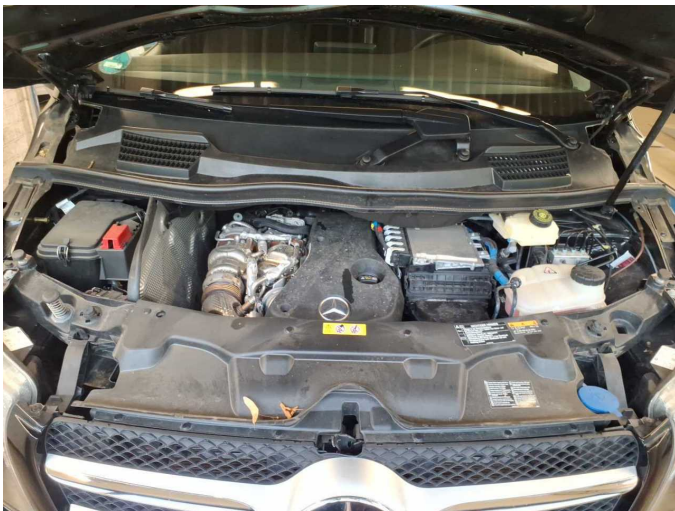


Figure 27: Misc.



Figure 28: Misc.



Figure 29: Misc.



Figure 30: Misc.



Figure 31: Misc.



Damage 1: Rear bumper: Rear bumper - Scratched - Paint



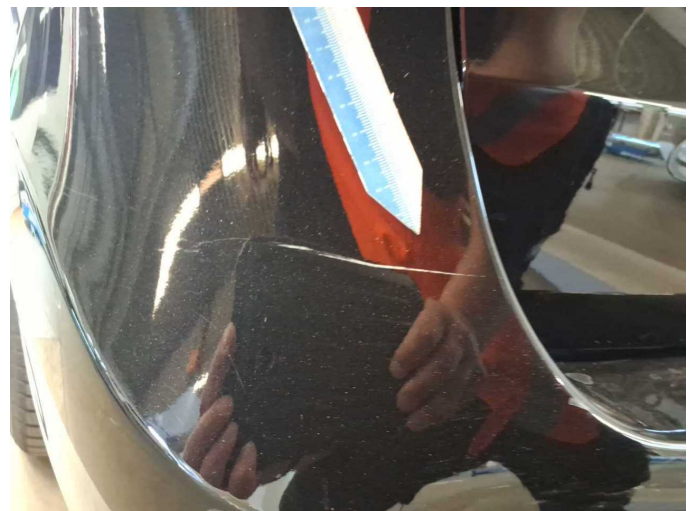
Damage 1: Rear bumper: Rear bumper - Scratched - Paint



Damage 1: Rear bumper: Rear bumper - Scratched - Paint



Damage 1: Rear bumper: Rear bumper - Scratched - Paint



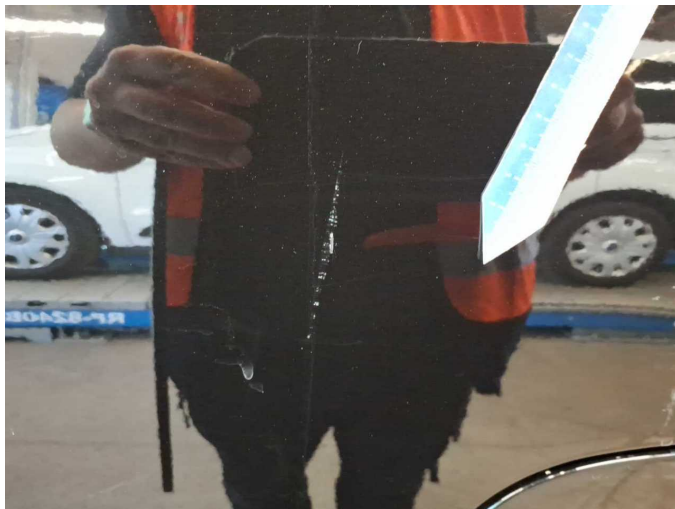
Damage 1: Rear bumper: Rear bumper - Scratched - Paint



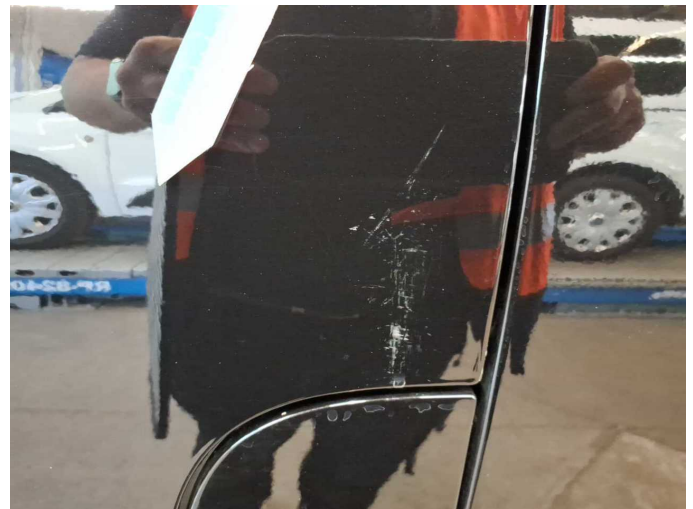
Damage 1: Rear bumper: Rear bumper - Scratched - Paint



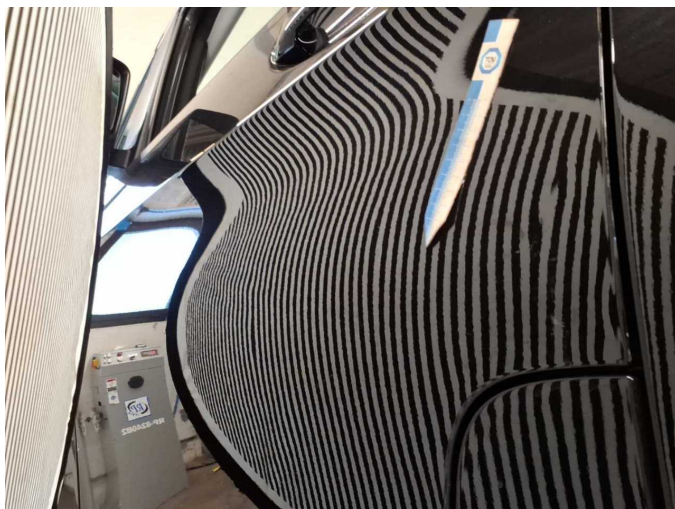
Damage 2: Door - front left side: Door - Dent / paintcoat damage - Repair and paint



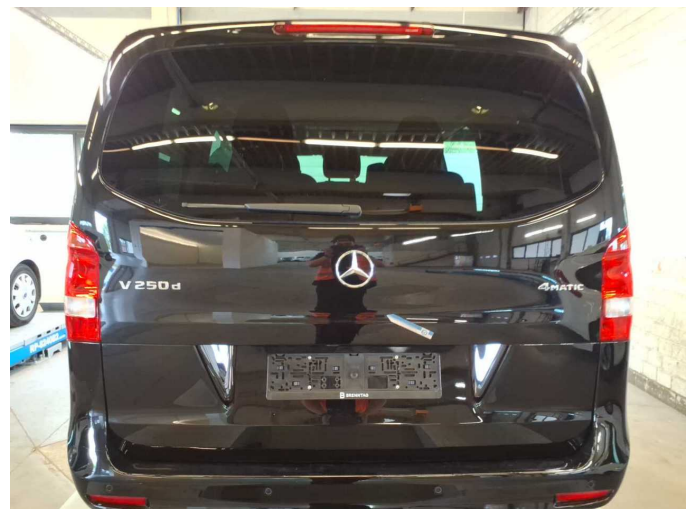
Damage 2: Door - front left side: Door - Dent / paintcoat damage - Repair and paint



Damage 2: Door - front left side: Door - Dent / paintcoat damage - Repair and paint



Damage 2: Door - front left side: Door - Dent / paintcoat damage - Repair and paint



Damage 3: Boot lid / rear door: Boot lid - Scratched - Paint



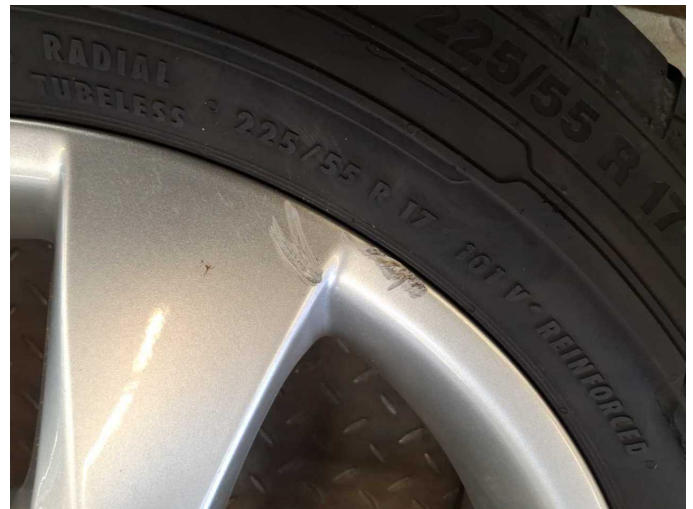
Damage 3: Boot lid / rear door: Boot lid - Scratched - Paint



Damage 3: Boot lid / rear door: Boot lid - Scratched - Paint



Wear and tear 1: 2nd wheel set: 2 alloy rims - Scratched - No deduction



Wear and tear 1: 2nd wheel set: 2 alloy rims - Scratched - No deduction



Wear and tear 1: 2nd wheel set: 2 alloy rims - Scratched - No deduction



Wear and tear 1: 2nd wheel set: 2 alloy rims - Scratched - No deduction



Wear and tear 2: 2nd wheel set: 3 tyres (225.55.17 Sommer) - Broken / torn - No deduction



Wear and tear 2: 2nd wheel set: 3 tyres (225.55.17 Sommer) - Broken / torn - No deduction



Wear and tear 2: 2nd wheel set: 3 tyres (225.55.17 Sommer) - Broken / torn - No deduction



Wear and tear 2: 2nd wheel set: 3 tyres (225.55.17 Sommer) - Broken / torn - No deduction



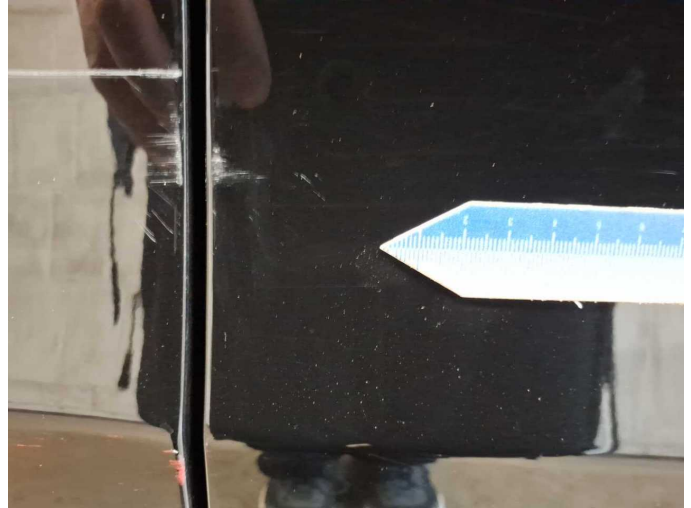
Wear and tear 2: 2nd wheel set: 3 tyres (225.55.17 Sommer) - Broken / torn - No deduction



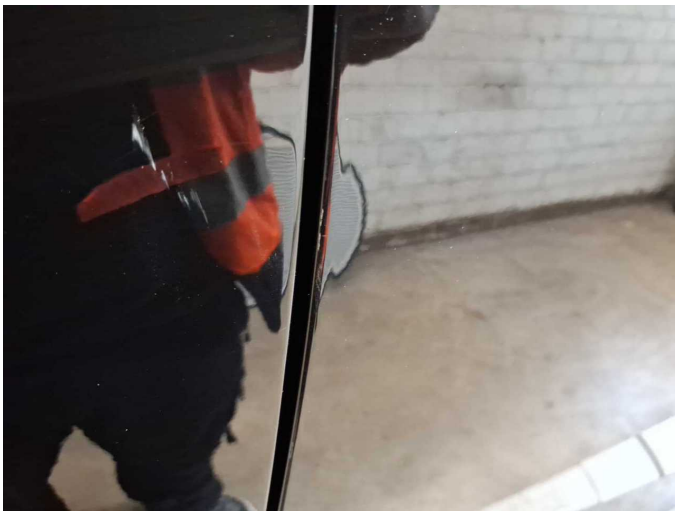
Wear and tear 2: 2nd wheel set: 3 tyres (225.55.17 Sommer) - Broken / torn - No deduction



Accident 1: Side right



Accident 1: Side right



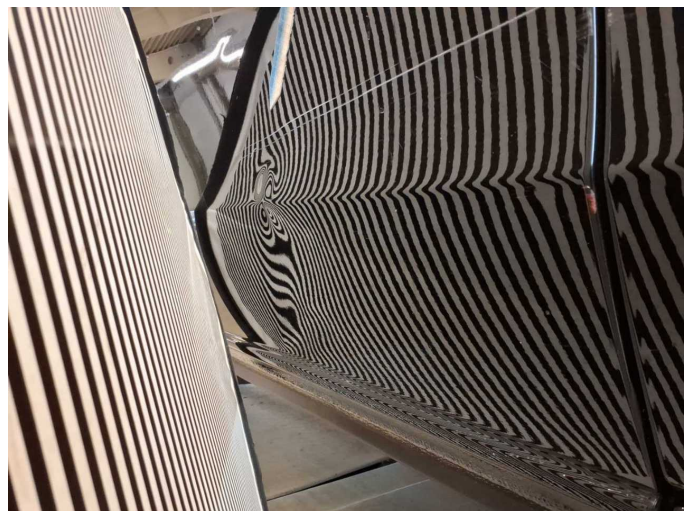
Accident 1: Side right



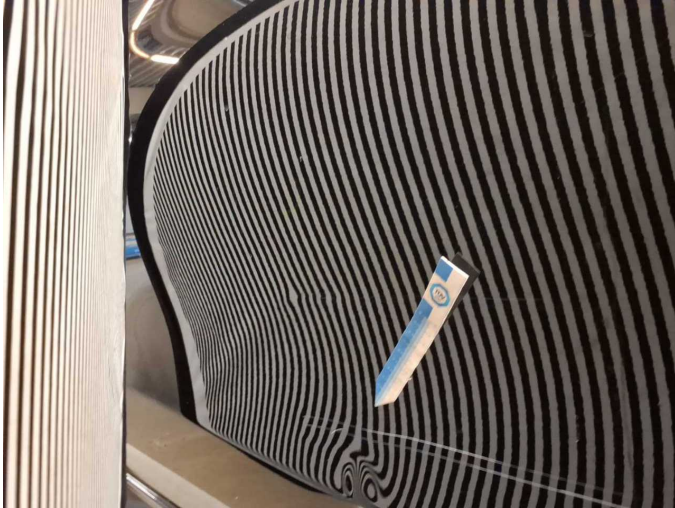
Accident 1: Side right



Accident 1: Side right



Accident 1: Side right



Accident 1: Side right



Wartungshistorie

(gemäß Auftraggeber Informationen)

Fahrgestellnummer: W1VVMKSZ1R4379249

Hersteller / Modell: MERCEDES-BENZ MERCEDES-BENZ V 250 d lang 4Matic 9G-TRONIC

Datum	KM-Stand	Beschreibung
13.03.2026	29.230	Regelwartungsdienst