

## Expertise

Protocol number: 45791234  
Order No. / Reference: 26442348  
Inspection date: 3 Jun 2026

Manufacturer: Skoda

Model: Octavia Combi 2.0 TDI Tour

VIN: TMBJG8NX4PY081018



### Vehicle details

#### Manufacturer / Type / Model / Equipment

Skoda Octavia Combi 2.0 TDI Tour

**Vehicle Identification number** TMBJG8NX4PY081018

**Mileage (Read)** 128,034 km

**First registration** 6 Mar 2023

**Number of holders** Unknown

**Power / Engine displacement** 85 kw / 1,968 ccm

**Fuel type / Cylinder** Diesel / 4

**Gearbox / Number of gears** Manual / 6

**Type of drive** Front drive

**Type of vehicle** Station wagon

**Colour / colour code** Black-Magic Perleffekt

**Doors / Seats** 5 / 5

**Upholstery type** Cloth

**Colour of upholstery** Black-Grey



## Vehicle details

<b>Maintenance booklet / proof</b>	digital proof / complete	<b>Next maintenance in</b>	28,200 km
<b>Last service on / at</b>	04/2026 at 126,234 km		
<b>Key is / should be</b>	3 / 3	<b>FZG documents</b>	ZB#2 (B) was available (copy), ZB#1 (S) was not available.
		<b>Letter No.</b>	GQ 542504
<b>Previous damage / Accident</b>	Detectable	<b>Repainting</b>	None detectable
<b>Inspection conditions</b>	sufficient	<b>Lifting equipment / pit</b>	yes
<b>Test drive</b>	Not performed	<b>Engine function test</b>	Performed
<b>Manufacturer key number/ type code number</b>	8004 / AWK 00538		
<b>Emission standard</b>	EURO6;WLTP;AP;PI/CI; M, N1 I	<b>fine dust sticker</b>	
<b>Permitted total weight</b>	1,960 kg	<b>Empty weight</b>	

## Tyres

### Mounted tyres

#	Tyre size	Type of tyre	Manufacturer	Tread depth
1)	205/55 R17 95V	Summer tyres on Light alloy	Continental	6mm / 6mm
2)	205/55 R17 95V	Summer tyres on Light alloy	Continental	6mm / 6mm

### Additional tyres

#	Tyre size	Type of tyre	Manufacturer	Tread depth
1)	205/60 R16 92H	Winter tyres on Light alloy	Goodyear	5mm / 5mm
2)	205/60 R16 92H	Winter tyres on Light alloy	Goodyear	5mm / 5mm

### Replacement

Typ	Tyre size	Type of tyre	Manufacturer	Tread depth
	Tirefit	Expiration date 11/2026		

**Legend: Tread depth information for the left tire is listed first, for the right tire it is listed second on the axle in the direction of travel.**



## Equipment

### Standard equipment

- Storage compartment in the luggage compartment with cargo element
- Airbag, driver's knee airbag
- Airbag, front side airbags
- Trailer hitch preparation including trailer stabilization
- Anti-lock braking system (ABS)
- Automatically dimming exterior mirror (driver's side)
- Electrically folding exterior mirrors
- Hill start assist including auto-hold function
- Hydraulic brake assist (HBA)
- Grey headliner
- Decorative trim in anodized cross
- Tachometer
- Electronic parking brake
- Electronic Stability Control (ESC)
- Electric windows front and rear, including anti-pinch protection and child safety lock
- Luggage net partition
- Transmission: 6-speed manual transmission
- Green tec: Start/stop system including brake energy recuperation
- Interior mirror automatically dimming
- Kessy, keyless entry and start-stop system
- Child safety lock for the rear doors and windows
- Removable boot cover
- LED fog lights
- LED license plate lights
- LED headlights with LED daytime running lights
- Steering wheel: height and reach adjustable
- Steering wheel: Leather steering wheel with multifunction buttons
- Front center armrest, including storage compartment
- Multifunction display in the instrument cluster
- Upholstery: Cloth
- Radio accessories: 2 USB-C ports on the front
- Radio accessories: 8 speakers
- Radio accessories: Digital radio reception DAB+
- Radio accessories: Voice control
- Tire pressure monitoring
- Wheels: 17" Pulsar AERO alloy wheels, grey, diamond-cut finish
- Seats: Heated rear seats
- Seats: Rear seat backrest split 60:40, foldable
- Speed limiter
- 12V socket in the trunk
- Phone: Wireless SmartLink for Apple CarPlay
- Front door sill trims
- Lashing eyes in the trunk
- Immobiliser
- Storage compartments
- Airbag, driver and passenger
- Airbag, head airbags
- Airbag: Center airbag front
- Extended warranty for 3 years, max. 50,000 km
- Traction control (ASR)
- Electrically adjustable and heated exterior mirrors
- Heated windshield washer nozzles including 5l washer fluid reservoir
- Glasses compartment in the headliner
- Roof rails, black
- Diesel particulate filter
- Third brake light
- Electronic transverse differential lock (XDS+)
- Driving light assistant
- Front radar assistant including city emergency braking function and pedestrian and cyclist detection
- Cruise control system
- Tinted windows
- Heated rear window
- Rear window wiper including windshield washer system
- ISOFIX preparations on the front passenger seat and the outer rear seats including top tether anchorage
- Climatronic air conditioning (3-zone)
- Headrests (5) front and rear height adjustable
- LED taillights in crystal glass look and animated turn signals
- Steering wheel: Heated steering wheel including heated front seats
- Manual headlight range adjustment
- Rear center armrest with pass-through option
- Engine drag torque control (MSR)
- Front and rear parking sensors
- Radio: Bolero music system with capacitive 10" color display
- Radio accessories: Bluetooth hands-free system
- Radio accessories: SmartLink
- Rain sensor
- Tire mobility kit
- Electromechanical power steering
- Seat belts
- Seats: Height-adjustable driver and passenger seats
- SKODA Care Connect
- Lane keeping assistant (Lane Assist)
- 230V power outlet and USB charging port
- TOUR badge
- Glazing: Acoustic glazing in the front side windows and Sunset
- Central locking including remote control integrated into the key and EASY Start



### Extra equipment

- Package: Infotainment package Business Columbus (Columbus navigation system - Infotainment Online (3-year subscription) - Digital instrument cluster (Virtual Cockpit) - 3 USB charging ports - Driving profile selection - Adaptive Cruise Control (ACC) - Traveller Assist system)
- Chassis: Sport chassis (15 mm reduced ground clearance - modified damper settings)
- Comfort opening with electric tailgate operation (Combi)
- Paint finish: Pearl effect

### Brief expert findings

Documents submitted	At the time of the inspection, the vehicle registration certificate Part 2 (title) was available, but the vehicle registration certificate Part 1 (document) was not. (Copy)
VIN comparison	The vehicle identification number (VIN) was read from the vehicle and its conformity with the submitted documents was confirmed by the undersigned during the inspection.
Inspection	The inspection conditions were sufficient for the assessment of the vehicle. Lifting equipment and/or a pit were available for examining the vehicle.
Test drive	No test drive/shunting maneuver was carried out during the inspection of the vehicle.
Engine function test	An engine test run was performed.

### Value reducing factors

No.	Component group	Description
1	Misc.	Main inspection - No evidence - No deduction
2	Door - rear left side	Door - Scratch(es) - Smart repair
3	Front bumper	Front bumper - Stone chips - Paint
4	Bonnet	Bonnet - Stone chips - Paint
5	Boot lid / rear door	Boot lid - Scratch(es) - Paint

### Wear and tear

No.	Component group	Description
1	Body	Body (Waschstraßenkratzer) - Scratch(es) - No deduction
2	Vehicle glazing	Windscreen - Stone chips - No deduction

The vehicle shows signs of wear and tear commensurate with its age and use.

### Accident damages

No.	Accident
1	Side - left

### Order/Scope of Order

An order was placed to prepare a sales report for the described vehicle. This report includes the following:

- Description of key vehicle information
- Documentation of equipment features  
(*Delivery by third-party service providers*)
- Documentation of damage, defects, missing parts
- Documentation of prior damage, unrepaired prior damage, repainting
- A brief visual or functional inspection of the equipment details, if possible.  
(*Functional testing of driver assistance systems is not included in the scope of services!*)
- a photographic documentation of the vehicle



## Basis for the order

This product is based on the guidelines for vehicle returns and valuations published by Alphabet Fleet GmbH. The expert makes the specific findings in each individual case objectively, within the framework of the prescribed standards, based on their own expertise.

The vehicle inspection takes place in a fully assembled, unassembled state.

Damage or defects that can only be detected during disassembly/diagnostic work or through further investigation remain within the realm of prognostic risk. An increased risk exists due to concealed defects caused by fraudulent misrepresentation and which were not identifiable by the expert.

Damage or defects resulting from normal use or wear and tear of the vehicle will be accepted in accordance with the applicable standard.

There was no explicit identification or monetary consideration of the expected features within the product.

Features which, in their nature and extent, slightly exceed normal use but do not constitute unacceptable damage, will be documented and indicated as signs of wear, if applicable.

Damage or defects that, according to the applicable standard, can no longer be attributed to normal use or wear and tear are listed under "Value Reducing Factors" in the product description.

Depending on the product specification, a monetary ID can be provided. If this takes place, the costs can be 100% d or pro rata depending on the vehicle's age and mileage.

## Previous damages

Non-repaired previous damages were found at the vehicle. The necessary repair costs are listed in the expert report or if necessary, are listed in detail in a separately enclosed repair cost calculation.

## Comments

Der beiliegende Radsatz gehört nicht zur Ausstattung.

Die beigefügte Reparaturkostenkalkulation wurde nach bestem Wissen und Gewissen unter eingeschränkten Besichtigungsbedingung im demontagefreien Zustand erstellt. Es können aufgrund verdeckter Beschädigung erhebliche Mehrkosten und somit Abweichung der für den Unfall ausgewiesenen Reparaturkosten nicht ausgeschlossen werden.



Figure 1: Diagonal front (left)



Figure 2: Diagonal front (right)



Figure 3: Diagonal rear (left)



Figure 4: Diagonal rear (right)



Figure 5: Interior - front



Figure 6: Interior - rear



Figure 7: Instrument cluster



Figure 8: Instrument panel



Figure 9: Interior 360° view



Figure 10: Cargo area



Figure 11: VIN



Figure 12: Mounted tyres



Figure 13: Documents



Figure 14: Additional tyres



Figure 15: Navigation



Figure 16: Misc.



Figure 17: Misc.

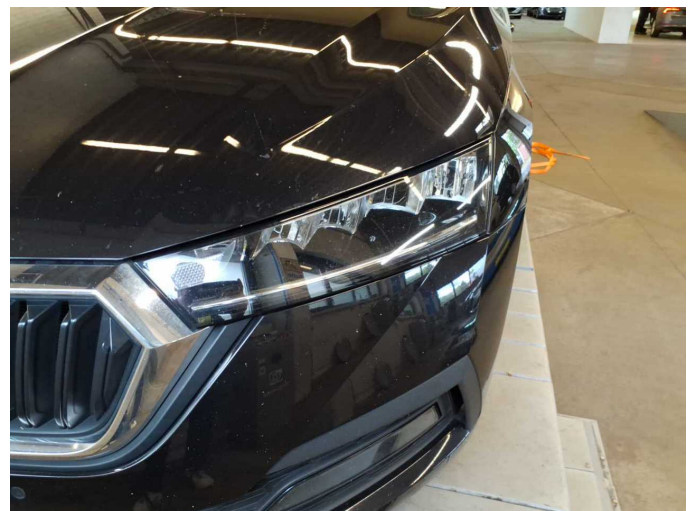


Figure 18: Misc.



Figure 19: Misc.



Figure 20: Misc.



Figure 21: Misc.



Figure 22: Misc.



Figure 23: Misc.



Figure 24: Misc.



Figure 25: Misc.



Figure 26: Misc.



Figure 27: Misc.



Figure 28: Misc.

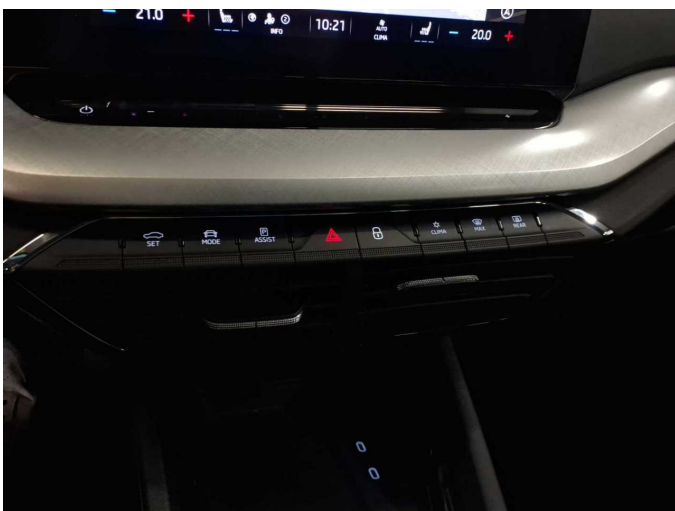
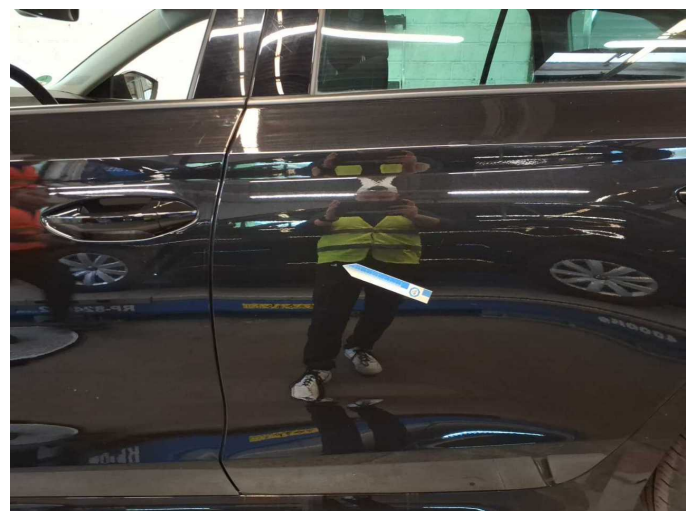


Figure 29: Misc.



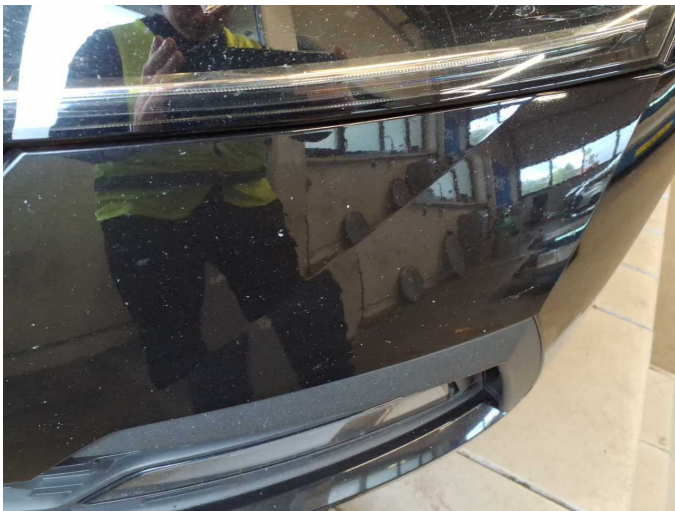
Damage 2: Door - rear left side: Door - Scratch(es) - Smart repair



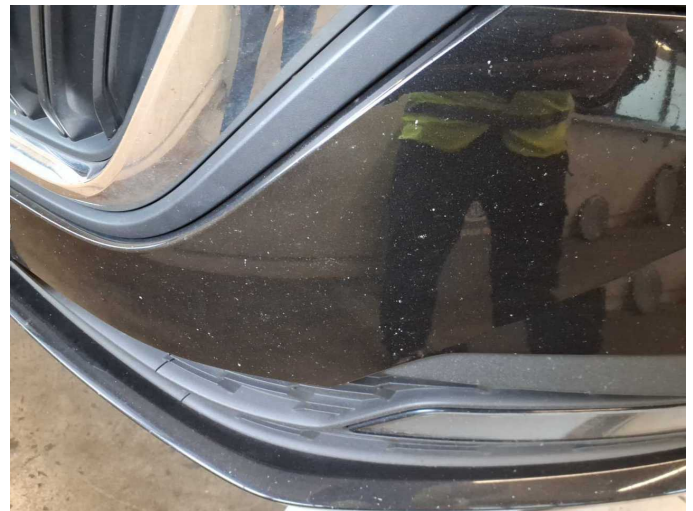
**Damage 2:** Door - rear left side: Door - Scratch(es) - Smart repair



**Damage 3:** Front bumper: Front bumper - Stone chips - Paint



**Damage 3:** Front bumper: Front bumper - Stone chips - Paint



**Damage 3:** Front bumper: Front bumper - Stone chips - Paint



**Damage 3:** Front bumper: Front bumper - Stone chips - Paint



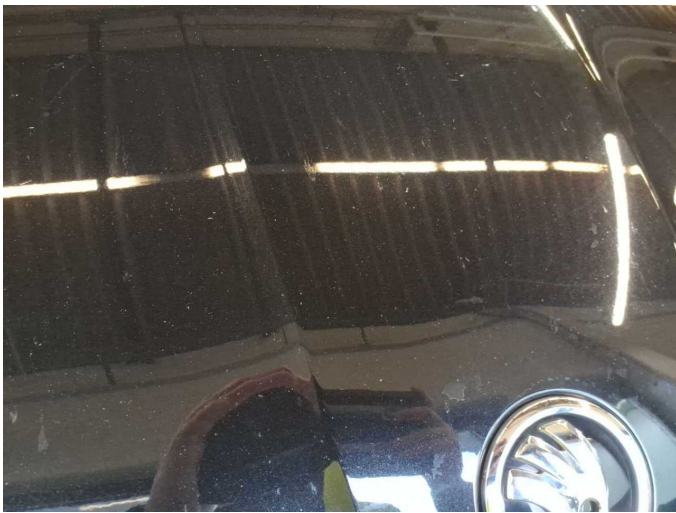
**Damage 3:** Front bumper: Front bumper - Stone chips - Paint



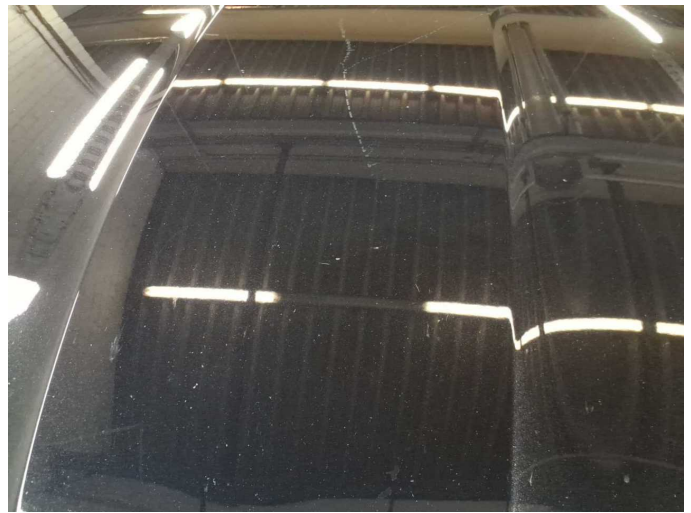
**Damage 4:** Bonnet: Bonnet - Stone chips - Paint



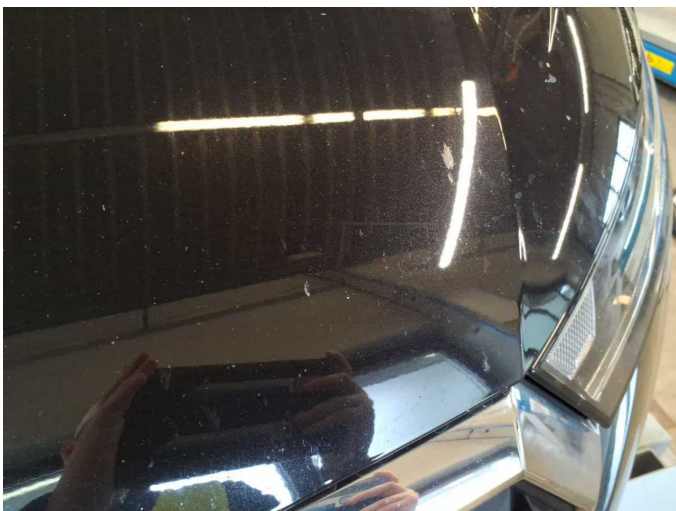
**Damage 4:** Bonnet: Bonnet - Stone chips - Paint



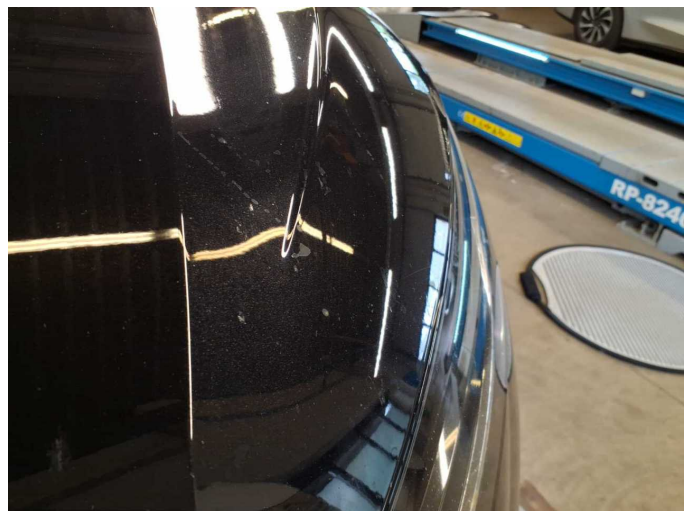
**Damage 4:** Bonnet: Bonnet - Stone chips - Paint



**Damage 4:** Bonnet: Bonnet - Stone chips - Paint



**Damage 4:** Bonnet: Bonnet - Stone chips - Paint



**Damage 4:** Bonnet: Bonnet - Stone chips - Paint



**Damage 5:** Boot lid / rear door: Boot lid - Scratch(es) - Paint



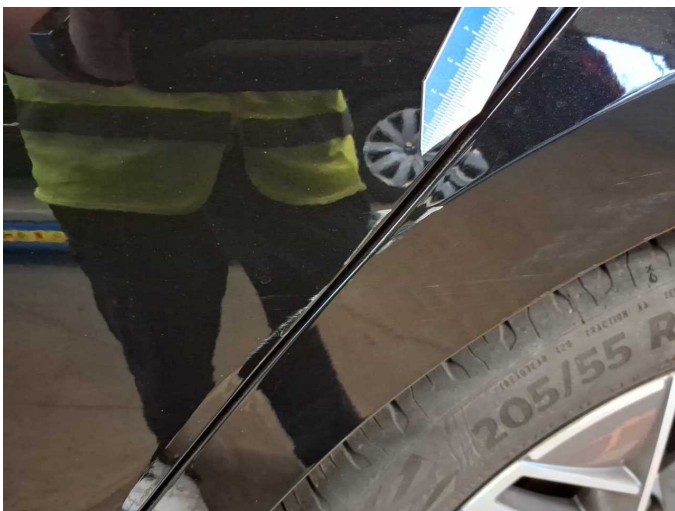
**Damage 5:** Boot lid / rear door: Boot lid - Scratch(es) - Paint



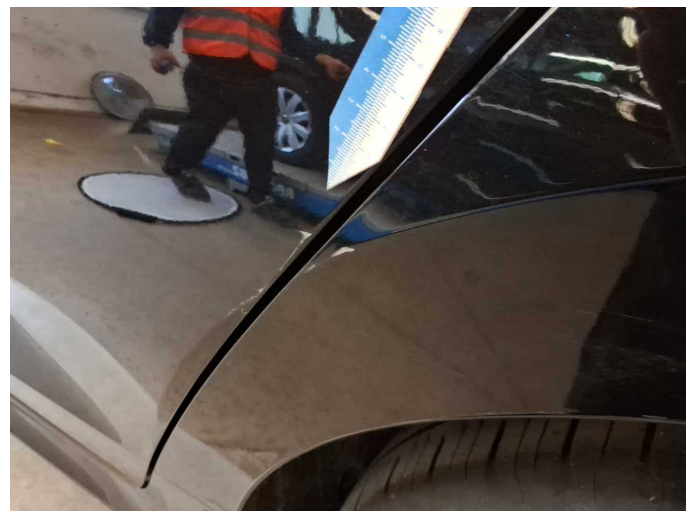
**Accident 1:** Side - left



**Accident 1:** Side - left



**Accident 1:** Side - left



**Accident 1:** Side - left



# Wartungshistorie

(gemäß Auftraggeber Informationen)

Fahrgestellnummer: TMBJG8NX4PY081018  
Hersteller / Modell: SKODA SKODA Octavia Combi 2.0 TDI Tour

Datum	KM-Stand	Beschreibung
24.04.2026	126.234	Motoröl b. Wartung; Ölfilter ern; Regelwartungsdienst; Wartung Sonstiges
02.03.2026	119.907	HU + AU
01.07.2025	94.598	Bremsflüssigkeit; Bremsflüssigkeit ern; Kraftstofffilter ern; Luftfiltereinsatz ern; Motoröl b. Wartung; Ölfilter ern; Regelwartungsdienst; Systemtest/ Eigendiagnose; Wartung Sonstiges
18.10.2024	64.686	Bremse Sonstiges; Bremsklötze hinten; Bremsklötze vorne; Bremsscheiben hinten; Bremsscheiben vorne; Motoröl b. Wartung; Ölfilter ern; Regelwartungsdienst; Wartung Sonstiges
05.01.2024	33.451	Motoröl b. Wartung; Ölfilter ern; Regelwartungsdienst; Wartung Sonstiges