

Expertise

Protocol number: 46209156
Order No. / Reference: 26560053
Inspection date: 26 Jun 2026

Manufacturer: Volkswagen

Model: ID.4 Performance Upgrade Pro

VIN: WVGZZZE2ZNE003551



Vehicle details

Manufacturer / Type / Model / Equipment

Volkswagen ID.4 Performance Upgrade Pro

Vehicle Identification number WVGZZZE2ZNE003551

Mileage (Read) 98,458 km

First registration 10 Nov 2022

Number of holders 1

Next periodical technical inspection 10/2027

(Report on hand)

Power / Engine displacement 70 kw /

Fuel type / Cylinder Electric / 0

Gearbox / Number of gears Direct drive / 1

Type of drive Rear drive

Type of vehicle SUV

Colour / colour code Mythoschwarz Metallic

Doors / Seats 5 / 5

Upholstery type Cloth

Colour of upholstery Black-Anthracite

Vehicle with smoke odor no

readiness to drive Roadworthy



Vehicle details

Maintenance booklet / proof	digital proof / complete	Next maintenance in	116 Tag(e)
Last service on / at	10/2024 at 53,110 km		
Key is / should be	2 / 2	FZG documents	ZB#2 (B) was available (copy), ZB#1 (S) was not available.
		Letter No.	GM706812
Previous damage / Accident	None detectable	Repainting	None detectable
Inspection conditions	sufficient	Lifting equipment / pit	yes
Test drive	short drive on the company premises	Engine function test	Performed
readiness to drive	Roadworthy		
Manufacturer key number/ type code number	0603 / CLQ 00094		
Emission standard	2017/1151;WLTP;reine Elektrofz	fine dust sticker	
Permitted total weight	2,660 kg	Empty weight	

Tyres

Mounted tyres				
#	Tyre size	Type of tyre	Manufacturer	Tread depth
1)	235/55 R19 101T	Winter tyres on Light alloy	Pirelli	6mm / 6mm
2)	255/50 R19 103T	Winter tyres on Light alloy	Pirelli	7mm / 7mm
Additional tyres				
#	Tyre size	Type of tyre	Manufacturer	Tread depth
1)	235/45 R21 101T	Summer tires (with run-flat tires) on Light alloy	Bridgestone	4mm / 4mm
2)	255/40 R21 102T	Summer tires (with run-flat tires) on Light alloy	Bridgestone	3mm / 3mm

Legend: Tread depth information for the left tire is listed first, for the right tire it is listed second on the axle in the direction of travel.



Equipment

Standard equipment

- 2 USB-C ports on the front
- Airbag for driver and front passenger, with front passenger airbag deactivation
- Ambient lighting, 10 colors
- Electrically adjustable, folding and heated exterior mirrors
- Car2X
- e-Sound
- ESP Electronic Stability Program
- Speed limiter
- Back window, heater
- Interior mirror automatically dimming
- "Climatronic" air conditioning system
- Paint finish: Solid
- Charging: 11 kW AC charging power (alternating current)
- LED headlights with automatic headlight control
- Makeup mirrors in the sun visors
- Fatigue detection
- Emergency braking assistant "Front Assist" with pedestrian and cyclist detection
- Upholstery: Seat center panels of the front seats and the outer rear seats in "Matrix" fabric
- Tire pressure monitoring system
- LED taillights
- electromechanical power steering
- Seats: Armrest for front seats
- Seats: Driver's seat height adjustable
- Voice control
- Lane keeping assistant "Lane Assist"
- Ambient lighting with logo projection
- Traffic sign recognition
- Green thermal insulation glazing, sides and rear
- Turning brake function and evasive steering support
- Airbags: Front and rear head airbags, front side airbags, center airbag
- App-Connect Wireless for Apple CarPlay and Android Auto
- third brake light
- black roof rails
- Parking assistance
- Driving profile selection
- Transmission: 1-speed automatic
- rear window wiper
- ISOFIX mounting points for child car seats
- Front and rear headrests (5)
- Mode 3 Type 2 charging cable, 16 A
- Charging: 125 kW DC charging power (direct current)
- Steering wheel: Multifunction steering wheel with touch controls
- Navigation system "Discover Pro"
- Emergency call service
- Package: Infotainment Package
- Radio "Ready 2 Discover"
- Radio accessories: 6 + 1 speakers
- Wheels: Steel wheels (4) 8 J x 19
- Keyless Start system
- Seat belts: Three-point automatic seat belts at the front with height adjustment and belt tensioner
- Seats: Rear bench seat undivided, backrest asymmetrically split and foldable
- Telephone interface
- First aid kit, warning triangle and high-visibility vest
- Electronic immobilizer
- Central locking including remote control



Extra equipment

- All-weather floor mats, front and rear, titanium black
- Reversible luggage compartment mat, variable loading floor, upper P
- Paint finish: Metallic
- Charging cable: Mains charging cable for household socket
- Package: Assistance Package "Plus" including "IQ.DRIVE" in conjunction with Interior Top Sport "Plus" and Style ("Easy Open & Close" - tailgate with sensor-controlled opening and closing, with remote release; Adaptive Cruise Control "Stop & Go", with speed limiter; Anti-theft alarm with interior, backup horn and tow-away function; Driving Assistance "Travel Assist", Lane Keeping Assist "Lane Assist" and "Emergency Assist"; Multifunction leather steering wheel; Parking Assist "Park Assist Plus"; Precise occupant protection; Keyless locking and start system "Keyless Access", with Safe Security; Lane Change Assist "Side Assist"; Surround view "Area View" including reversing camera.)
- Package: Infotainment Package "Plus" (Head-up display - Navigation system "Discover Pro": 23.4 cm touchscreen, map with 2D display, traffic sign recognition, points of interest, App-Connect Wireless, voice control - Radio "Ready 2 Discover Max": DAB+ digital radio reception, diversity antenna for FM reception - Telephone interface "Comfort" with inductive charging function including hands-free system, Bluetooth audio, external antenna connection with LTE support - Sound system, 6 loudspeakers, digital channel amplifier, subwoofer, 450 W)
- Package: Sport package "Plus" (Adaptive chassis control DCC incl. driving profile selection - progressive steering)
- Wheels: Alloy wheels (4) "Narvik" 8.5 J x 21 front, 9 J x 21 rear, in black / diamond-turned (wheels in black, diamond-turned surface - Airstop tires 235/45 R 21 front, Airstop tires 255/40 R 21 rear - wheel locks with enhanced theft protection)
- Folding box for e-charging cables
- Interior Top Sport "Plus" with black steering wheel (30-color ambient lighting, electrically adjustable, folding, and heated exterior mirrors, passenger-side mirror dipping function, ergoActive front seats with electrical adjustment, memory function, sliding thigh support, pneumatically adjustable lumbar support in the front, massage function, leather multifunction steering wheel, heated, with touch controls, pedals in "Play/Pause" design, asymmetrically split and folding rear seat backrest, through-loading facility and center armrest, 2 cup holders, seats in ArtVelours microfleece, ambient lighting, heated front seats)
- Package: Design Package "Plus" (3D LED taillights with dynamic turn signals - Dynamic Light Assist high beam control for LED matrix headlights - IQ.LIGHT - LED matrix headlights with automatic headlight control, bad weather light, welcome function - Illuminated strip between the headlights - Panoramic roof - Laminated safety glass for front side windows; tinted rear window and rear side windows)
- Package: Comfort Package "Plus" in conjunction with Interior Top Sport "Plus" or Style (2 USB-C interfaces in the front, 2 USB-C charging ports on the rear center console - Windscreen in laminated safety glass, wirelessly heated and infrared-reflecting, noise-reducing - Luggage net - Luggage compartment floor - "Air Care Climatronic" air conditioning with active combination filter, stationary climate control and 3-zone temperature control - Variable center console with interchangeable inserts for cup holders and storage compartments - Cargo net partition - Rain sensor - Automatically heated front windscreen washers - Heated front seats)
- Textile floor mats front and rear
- Heat pump for range optimization

Brief expert findings

Documents submitted	At the time of the inspection, the vehicle registration certificate Part 2 (title) was available, but the vehicle registration certificate Part 1 (document) was not. (Copy)
VIN comparison	The vehicle identification number (VIN) was read from the vehicle and its conformity with the submitted documents was confirmed by the undersigned during the inspection.
Inspection	The inspection conditions were sufficient for the assessment of the vehicle. Lifting equipment and/or a pit were available for examining the vehicle.
Test drive	A short maneuvering and shunting exercise was carried out on the company premises.
Engine function test	An engine test run was performed.
readiness to drive	The vehicle was roadworthy at the time of inspection.



Value reducing factors

No.	Component group	Description
1	Door - rear left side	Door edge - Scratch(es) - Smart repair
2	Mudguard - right side	Mudguard - right side - Scratch(es) - Smart repair
3	Side panel - rear right side	Sill - Scratch(es) - Smart repair
4	Boot lid / rear door	Boot lid - Scratch(es) - Smart repair
5	Front axle	Axles / undercarriage (wegen der beschädigten Felgen) - Specify findings - Measure
6	2nd wheel set	1 tyre - Broken / torn - Replace
7	Bonnet	Bonnet - Stone chips - Paint
8	2nd wheel set	1 alloy rim (8,5Jx21) - Scratched - Replace
9	2nd wheel set	1 alloy rim (9Jx21) - Scratched - Replace
10	2nd wheel set	1 alloy rim (9Jx21) - Scratched - Replace
11	Door - front left side	Door - Scratch(es) - Paint
12	Door - front right side	Door - Scratch(es) - Paint

Wear and tear

No.	Component group	Description
1	Front bumper	Spoiler - Scratch(es) - No deduction
2	Front bumper	Front bumper - Stone chips - No deduction
3	Door - rear right side	Door - Scratch(es) - No deduction

The vehicle shows signs of wear and tear commensurate with its age and use.

Missing parts

Description

Documents - Log book (Original Bordbuchmappe + Betriebsanleitung)

Order/Scope of Order

An order was placed to prepare a sales report for the described vehicle. This report includes the following:

- Description of key vehicle information
- Documentation of equipment features
(*Delivery by third-party service providers*)
- Documentation of damage, defects, missing parts
- Documentation of prior damage, unrepaired prior damage, repainting
- A brief visual or functional inspection of the equipment details, if possible.
(*Functional testing of driver assistance systems is not included in the scope of services!*)
- a photographic documentation of the vehicle



Basis for the order

This product is based on the guidelines for vehicle returns and valuations published by Alphabet Fleet GmbH. The expert makes the specific findings in each individual case objectively, within the framework of the prescribed standards, based on their own expertise.

The vehicle inspection takes place in a fully assembled, unassembled state.

Damage or defects that can only be detected during disassembly/diagnostic work or through further investigation remain within the realm of prognostic risk. An increased risk exists due to concealed defects caused by fraudulent misrepresentation and which were not identifiable by the expert.

Damage or defects resulting from normal use or wear and tear of the vehicle will be accepted in accordance with the applicable standard.

There was no explicit identification or monetary consideration of the expected features within the product.

Features which, in their nature and extent, slightly exceed normal use but do not constitute unacceptable damage, will be documented and indicated as signs of wear, if applicable.

Damage or defects that, according to the applicable standard, can no longer be attributed to normal use or wear and tear are listed under "Value Reducing Factors" in the product description.

Depending on the product specification, a monetary ID can be provided. If this takes place, the costs can be 100% d or pro rata depending on the vehicle's age and mileage.

Previous damages

No apparent prior damage that had been repaired could be found on the vehicle.



Figure 1: Diagonal front (left)



Figure 2: Diagonal front (right)



Figure 3: Diagonal rear (left)



Figure 4: Diagonal rear (right)

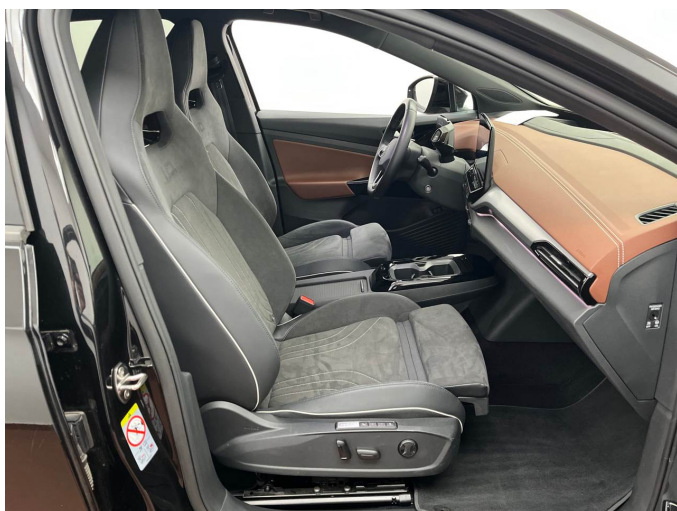


Figure 5: Interior - front



Figure 6: Interior - rear

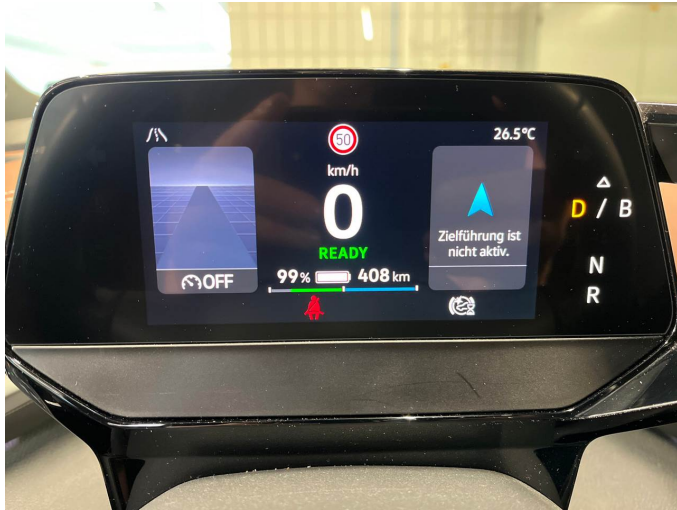


Figure 7: Instrument cluster



Figure 8: Instrument panel



Figure 9: Interior 360° view



Figure 10: Cargo area

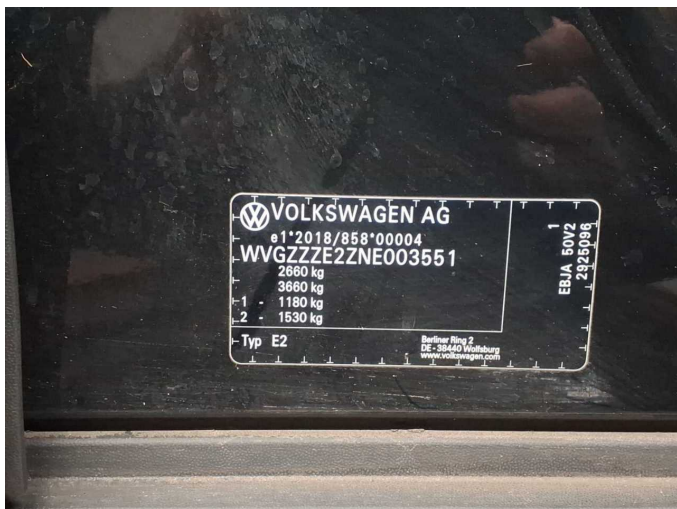


Figure 11: VIN



Figure 12: Mounted tyres



Figure 13: Documents



Figure 14: Documents



Figure 15: Documents



Figure 16: Documents



Figure 17: Additional tyres

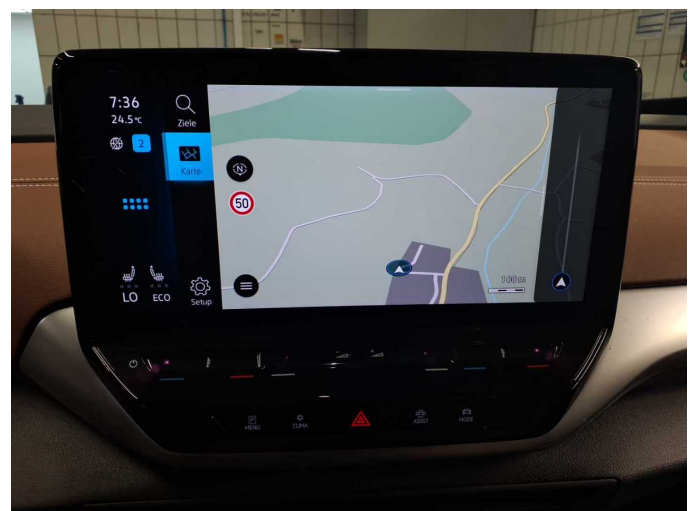


Figure 18: Navigation

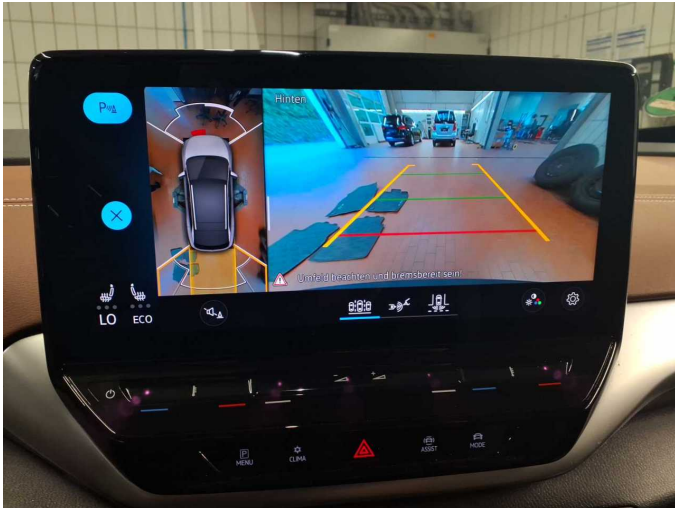


Figure 19: Misc.



Figure 20: Misc.



Figure 21: Misc.



Figure 22: Misc.



Figure 23: Misc.

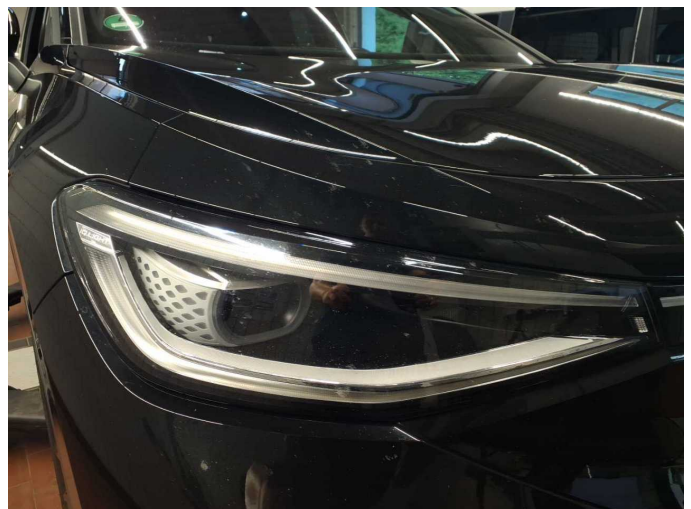


Figure 24: Misc.



Figure 25: Misc.



Figure 26: Misc.



Figure 27: Misc.



Figure 28: Misc.

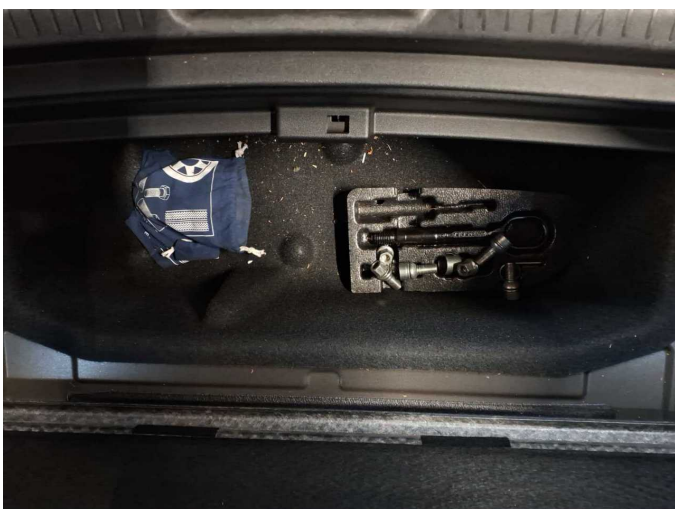


Figure 29: Misc.



Figure 30: Misc.



Figure 31: Misc.



Figure 32: Misc.



Figure 33: Misc.



Figure 34: Misc.



Figure 35: Misc.



Damage 1: Door - rear left side: Door edge - Scratch(es) - Smart repair



Damage 1: Door - rear left side: Door edge - Scratch(es) - Smart repair



Damage 2: Mudguard - right side: Mudguard - right side - Scratch(es) - Smart repair



Damage 2: Mudguard - right side: Mudguard - right side - Scratch(es) - Smart repair



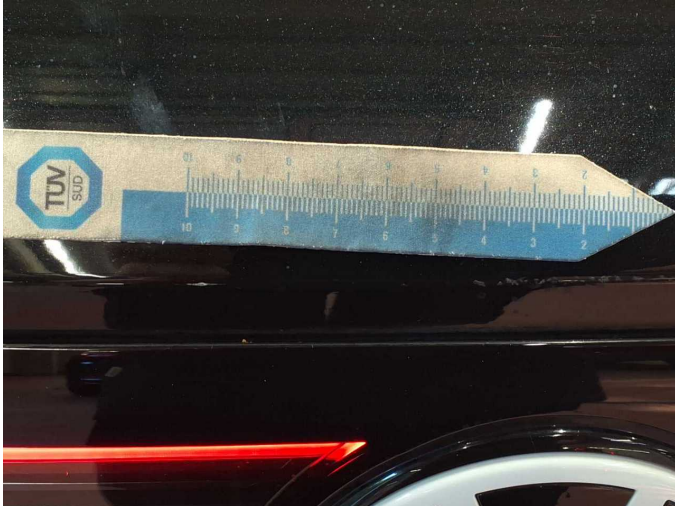
Damage 3: Side panel - rear right side: Sill - Scratch(es) - Smart repair



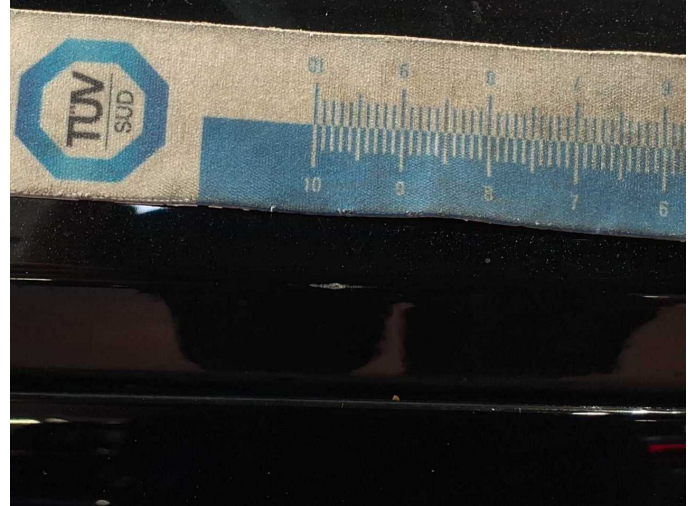
Damage 3: Side panel - rear right side: Sill - Scratch(es) - Smart repair



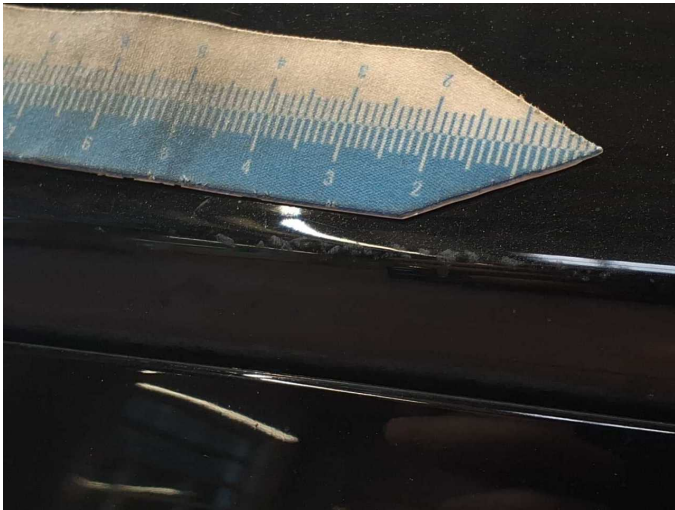
Damage 4: Boot lid / rear door: Boot lid - Scratch(es) - Smart repair



Damage 4: Boot lid / rear door: Boot lid - Scratch(es) - Smart repair



Damage 4: Boot lid / rear door: Boot lid - Scratch(es) - Smart repair



Damage 4: Boot lid / rear door: Boot lid - Scratch(es) - Smart repair



Damage 6: 2nd wheel set: 1 tyre - Broken / torn - Replace



Damage 6: 2nd wheel set: 1 tyre - Broken / torn - Replace



Damage 7: Bonnet: Bonnet - Stone chips - Paint



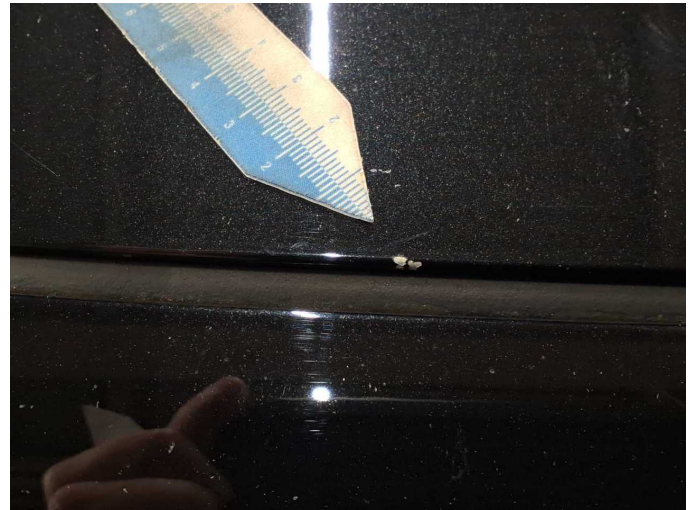
Damage 7: Bonnet: Bonnet - Stone chips - Paint



Damage 7: Bonnet: Bonnet - Stone chips - Paint



Damage 7: Bonnet: Bonnet - Stone chips - Paint



Damage 7: Bonnet: Bonnet - Stone chips - Paint



Damage 8: 2nd wheel set: 1 alloy rim (8,5Jx21) - Scratched - Replace



Damage 8: 2nd wheel set: 1 alloy rim (8,5Jx21) - Scratched - Replace



Damage 8: 2nd wheel set: 1 alloy rim (8,5Jx21) - Scratched - Replace



Damage 8: 2nd wheel set: 1 alloy rim (8,5Jx21) - Scratched - Replace



Damage 8: 2nd wheel set: 1 alloy rim (8,5Jx21) - Scratched - Replace



Damage 8: 2nd wheel set: 1 alloy rim (8,5Jx21) - Scratched - Replace



Damage 9: 2nd wheel set: 1 alloy rim (9Jx21) - Scratched - Replace



Damage 9: 2nd wheel set: 1 alloy rim (9Jx21) - Scratched - Replace



Damage 9: 2nd wheel set: 1 alloy rim (9Jx21) - Scratched - Replace



Damage 9: 2nd wheel set: 1 alloy rim (9Jx21) - Scratched - Replace



Damage 9: 2nd wheel set: 1 alloy rim (9Jx21) - Scratched - Replace



Damage 9: 2nd wheel set: 1 alloy rim (9Jx21) - Scratched - Replace



Damage 10: 2nd wheel set: 1 alloy rim (9Jx21) - Scratched - Replace



Damage 10: 2nd wheel set: 1 alloy rim (9Jx21) - Scratched - Replace



Damage 10: 2nd wheel set: 1 alloy rim (9Jx21) - Scratched - Replace



Damage 10: 2nd wheel set: 1 alloy rim (9Jx21) - Scratched - Replace



Damage 10: 2nd wheel set: 1 alloy rim (9Jx21) - Scratched - Replace



Damage 10: 2nd wheel set: 1 alloy rim (9Jx21) - Scratched - Replace



Damage 10: 2nd wheel set: 1 alloy rim (9Jx21) - Scratched - Replace



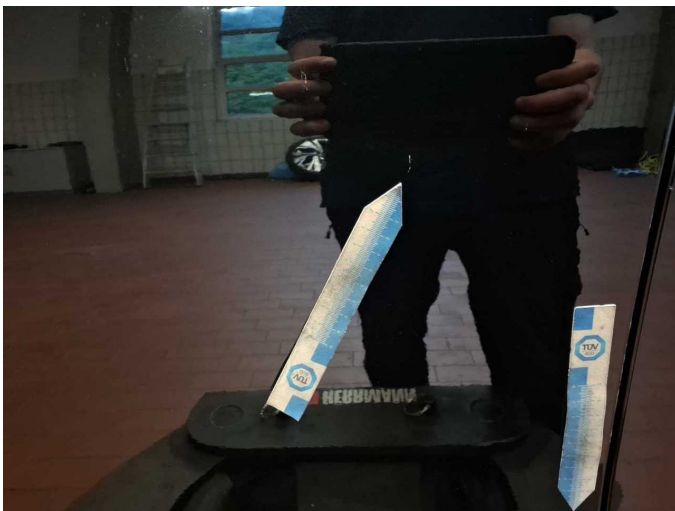
Damage 10: 2nd wheel set: 1 alloy rim (9Jx21) - Scratched - Replace



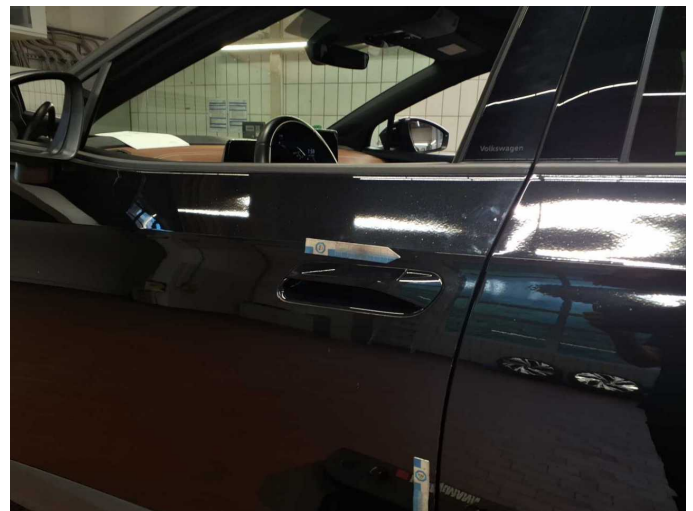
Damage 11: Door - front left side: Door - Scratch(es) - Paint



Damage 11: Door - front left side: Door - Scratch(es) - Paint



Damage 11: Door - front left side: Door - Scratch(es) - Paint



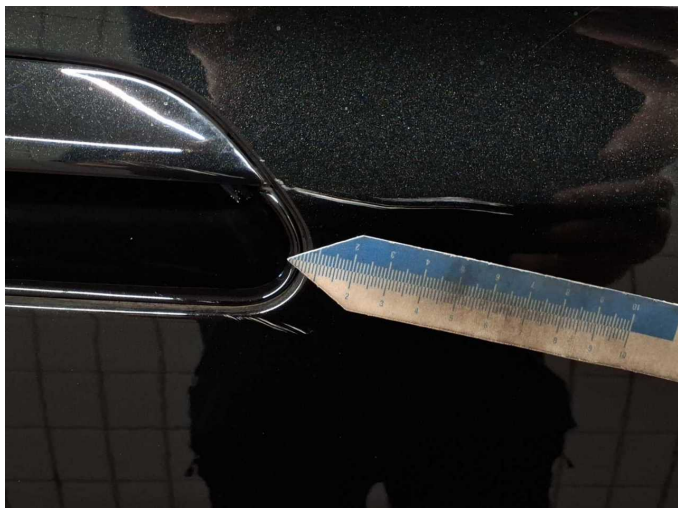
Damage 11: Door - front left side: Door - Scratch(es) - Paint



Damage 11: Door - front left side: Door - Scratch(es) - Paint



Damage 12: Door - front right side: Door - Scratch(es) - Paint



Damage 12: Door - front right side: Door - Scratch(es) - Paint



Wear and tear 2: Front bumper: Front bumper - Stone chips - No deduction



Wear and tear 2: Front bumper: Front bumper - Stone chips - No deduction



Wartungshistorie

(gemäß Auftraggeber Informationen)

Fahrgestellnummer: WVGZZZE2ZNE003551

Hersteller / Modell: VOLKSWAGEN VOLKSWAGEN ID.4 Performance Upgrade Pro

Datum	KM-Stand	Beschreibung
22.01.2026	87.192	Reparatur Sonstiges; Systemtest/Eigendiagnose
21.10.2025	81.408	Bremsbelagfühler ern; Bremse Sonstiges; Bremsklötze vorne; Bremsscheiben vorne
27.02.2025	61.545	Klimaanlage inst.; Reparatur Sonstiges; Systemtest/Eigendiagnose
25.10.2024	53.110	Bremsflüssigkeit ern; Regelwartungsdienst