

Expertise

Protocol number: 46257017
Order No. / Reference: 26441138
Inspection date: 1 Jul 2026

Manufacturer: Mercedes-Benz

Model: GLC 300 de 4Matic 9G-TRONIC AMG Line

VIN: W1N2539111G056191



Vehicle details

Manufacturer / Type / Model / Equipment

Mercedes-Benz GLC 300 de 4Matic 9G-TRONIC AMG Line

Vehicle Identification number W1N2539111G056191

Mileage (Read) 108,355 km

First registration 10 May 2022

Number of holders 1

Next periodical technical inspection 05/2027
(Report on hand)

Power / Engine displacement 143 kw / 1,950 ccm

Fuel type / Cylinder Hybr.D/E ext.auf1 / 4

Gearbox / Number of gears Automatic / 9

Type of drive All-wheel drive

Type of vehicle Station wagon

Colour / colour code CAVANSITBLAU -
METALLICLACK

Doors / Seats 5 / 5

Upholstery type Alcantara / Leather

Colour of upholstery Black-Anthracite

Re-import no

Vehicle with smoke odor no



Vehicle details

Maintenance booklet / proof	Non-existent	Next maintenance in	87 Tag(e)
Key is / should be	2 / 2	FZG documents	ZB#2 (B) was available (copy), ZB#1 (S) was not available.
		Letter No.	GF802060
Previous damage / Accident	None detectable	Repainting	None detectable
Inspection conditions	sufficient	Lifting equipment / pit	No
Test drive	Not performed	Engine function test	Performed
Manufacturer key number/ type code number	2222 / ASV 00057		
Emission standard	EURO6;WLTP;AP;PI/CI; M, N1 I	fine dust sticker	
Permitted total weight	2,650 kg	Empty weight	

Tyres

Mounted tyres

#	Tyre size	Type of tyre	Manufacturer	Tread depth
1)	235/60 R18 103H XL	Winter tyres on Light alloy	Pirelli	5mm / 5mm
2)	235/60 R18 103H XL	Winter tyres on Light alloy	Pirelli	5mm / 5mm

Additional tyres

#	Tyre size	Type of tyre	Manufacturer	Tread depth
1)	235/55 R19 101V	Summer tires (with run-flat tires) on Light alloy	Pirelli	5mm / 5mm
2)	235/55 R19 105W XL	Summer tyres on Light alloy	Michelin	6mm / 6mm

Legend: Tread depth information for the left tire is listed first, for the right tire it is listed second on the axle in the direction of travel.



Equipment

Equipment

- Klimaautomatik

|



Standard equipment

- Airbag for driver and front passenger
- Airbag: Sidebag for driver and front passenger (combined thorax/ pelvisbag)
- Acoustic environmental protection (To ensure that your vehicle does not become a danger to pedestrians and cyclists even when driving purely electrically and almost silently, the acoustic environmental protection generates a Mercedes-Benz specific sound outside the vehicle up to a speed of 30 km/h.)
- Anti-lock braking system (ABS)
- Automatic passenger airbag deactivation
- Heated exterior mirrors on the left and right, electrically adjustable from the inside (with aspherically curved mirror glass and integrated turn signal light)
- Roof rails in polished aluminum
- Diesel particulate filter
- Tachometer
- DYNAMIC SELECT
- Electronic Stability Program (ESP)
- Chassis with higher ground clearance (In this chassis variant, the body is raised by 20 mm)
- electric parking brake
- Transmission: 9G-TRONIC
- rear window wiper
- KEYLESS-GO start function
- Remote trunk lid release
- Instrument cluster with 2 tubular round instruments, 13.97 cm (5.5") multifunction display
- Communication module (LTE) for using Mercedes me connect services (The communication module (LTE) offers you a clear increase in comfort and safety. It constantly connects the vehicle to the internet – so that you can use helpful services such as the Live Traffic Information from Mercedes me connect. Two mobile antennas and an LTE-enabled SIM card ensure a fast connection.)
- Charging system: AC on-board charger (AC charging)
- LED High Performance headlights (with integrated daytime running lights, LED taillights)
- Steering wheel: Multifunction sports steering wheel in 3-spoke design in black Nappa leather (with black decorative stitching, flattened at the bottom, deeply embossed in the grip area, touch control buttons and steering wheel trim in silver chrome galvanized)
- Navigation accessories: Extended MBUX functions (personalization (profiles) and prediction functions - LINGUATRONIC with natural language understanding - activation via "Hey Mercedes" - Wi-Fi hotspot - internet radio)
- Package: OFF-ROAD Exterior (lower part of the front bumper silver-chromed, radiator grille with chrome trim strips, 45.7 cm (18") 5-spoke alloy wheels painted tremolite grey and polished with 235/60 R 18 tires on 8 J x 18 ET 38 rims, suspension with increased ground clearance, front bumper with increased approach angle)
- Radio accessories: Digital radio
- Airbag: Kneebag for driver
- Airbag: Windowbags
- Active Brake Assist (can help avoid rear-end collisions with vehicles ahead, whether moving or stationary, as well as collisions with moving pedestrians and cyclists. In addition to distance and collision warnings, it primarily offers brake boosting – up to and including autonomous emergency braking.)
- 4MATIC all-wheel drive
- ATTENTION ASSIST (can detect typical signs of fatigue through driver behavior and warn the driver of increasing fatigue or inattentiveness)
- On-board computer
- Brake system with larger brake discs on the front axle (drilled front brake discs and front brake calipers with Mercedes-Benz lettering).
- Third brake light in LED technology
- EASY-Pack cargo cover (removable)
- Driving light assistant
- Electric window regulator, 4-way (with comfort operation and anti-pinch protection)
- Black floor mats with AMG lettering
- Heated rear window (with timer)
- Interior headliner fabric crystal grey
- Climate: THERMATIC automatic climate control with 2 climate zones (The THERMATIC automatic climate control with 2 climate zones offers individual climate comfort in the front seats: driver and front passenger can set the temperature separately for their side. Thanks to the automatic climate control and the sensitive sensor system, this is kept constant without any manual adjustments.)
- Headrests adjustable in 5 ways (4-way for driver and front passenger, and 2-way in the rear)
- Paint finish: Solid
- Charging cable for household socket, 5m, smooth (This charging cable, also called Mode 2 cable, allows you to charge the vehicle battery at the household socket with up to 2.3 kW (230 V, 1-phase, 10 A) and fits sockets of type E/F CEE 7/7.)
- Steering column mechanically adjustable in height and length
- Steering: Sport direct steering
- Mercedes-Benz emergency call system
- Package: Storage (map pockets on the back of the front seats - net on the load floor - folding box under the load floor - 12V socket in the load compartment on the left - cargo bars - two USB-C ports in the rear)
- Package: Interior lighting (More light, more atmosphere, better orientation: The interior lighting package provides more comprehensive direct and indirect lighting. The additional light elements create a pleasant atmosphere and make operation easier.)
- Upholstery: ARTICO leatherette/DINAMICA microfiber
- Radio: MBUX multimedia system



- Tire pressure monitoring system (TPMS)
- Remote Services Plus (The Remote Services Plus package transforms mobility into a new experience, offering greater comfort and safety. Status queries provide information about the remaining range. You can remotely control certain functions and locate your vehicle. Services such as maintenance management coordinate service appointments, saving you valuable time.)
- Seats: Folding rear seat backrests (40/20/40 split including Easy Pack Quickfold and center armrest with double cupholder and storage compartment)
- Cruise control (Drive relaxed and fuel-efficiently, especially on longer journeys. Simply select your desired speed and your vehicle will regulate it. In addition to the cruising speed, the speed limiter helps you maintain a maximum speed. This increases road safety and protects you from expensive speeding tickets.)
- Decorative elements: black piano lacquer finish/light longitudinally brushed aluminum

Extra equipment

- Ambient lighting (Design the interior according to your personal preference or current mood. With a total of 64 colors, the ambient lighting offers almost unlimited possibilities for lighting design and has the right color for every situation. Illuminated door sills on the driver and passenger sides.)
- KEYLESS-GO (Your KEYLESS-GO vehicle key can stay in your pocket; you don't need to take it out of your hand. Thanks to the stored access and driving authorization, the vehicle recognizes its owner. Simply grasp the door handle, open the door, get in, and drive off – KEYLESS-GO is always a convenient experience.)
- Package: Advanced Park
- Package: AMG Line Exterior (Plug-in Hybrid) (AMG Styling, consisting of AMG front apron with sporty air intakes and chrome trim element, AMG rear apron in diffuser look with black insert, diamond grille with chrome pins, integrated Mercedes star and matte iridium silver louvre with chrome inlay, 19-inch (48.3 cm) AMG light-alloy wheels in 5-twin-spoke design, painted tremolite grey and high-sheen finish with 235/55 R19 tires on 8 J x 19 ET 38 rims, 2 visible tailpipe trims permanently integrated into the bumper)
- Package: Mirrors (Electrically folding exterior mirrors, lowering right exterior mirror, automatic dimming function)
- Remote and Charging Services Plus
- Wheels: Winter complete wheels M+S 4-way 45.7 cm (18") light alloy wheels in 5-twin-spoke design (45.7 cm (18") light alloy wheels in 5-twin-spoke design, Himalayan grey matt painted and polished with 235/60 R 18 on 8.0 J x 18 ET 38)
- Heat-insulating dark tinted glass all around from the B-pillar back

- Radio accessories: Touchpad (integrated into the center console, including a hand rest - single and multi-finger gestures, swiping movements and zoom gestures by spreading and pinching the fingers - recognizes handwritten characters: letters, special characters and numbers - clear haptic feedback)
- Windscreen wipers with rain sensor
- Power steering
- Seat: Front sports seats
- Seats: i-Size child restraint system on the outer rear seats
- Seats: Front seats electrically adjustable (with electric adjustment for seat height and backrest angle, as well as mechanical adjustment for longitudinal adjustment and headrests)
- High-visibility vest for drivers
- Immobiliser
- Central locking (with interior switch, automatic locking (can be deactivated) and crash sensor with emergency opening)

- Towbar with ESP trailer stabilization (fully electrically foldable and retractable)
- EASY-Pack tailgate with electric operation for opening and closing
- Instrument panel and door sills in ARTICO man-made leather
- Paint finish: Metallic
- Charging cable for wallboxes and public charging stations, 5m, smooth
- Navigation accessories: Pre-installation for Live Traffic Information
- Package: Advanced Comfort (Seat heating for driver and front passenger, driver's seat electrically adjustable with memory function, front right seat electrically adjustable with memory function)
- Package: Business (for plug-in hybrid vehicles) (Advanced Parking Package: Active Parking Assist PARKTRONIC with reversing camera; Advanced Infotainment Package: Media display with touch operation, smartphone integration - Apple CarPlay and Android Auto, connectivity package navigation, traffic sign assist; Comfort Package: Heated seats for driver and front passenger, seat comfort package - electric and manual adjustment options for the front seats; Public Charging Package)
- PRE-SAFE system (as preventive occupant protection)
- Wheels: 48.3 cm (19") AMG light-alloy wheels, 4 in 5-twin-spoke design
- Wheels: Complete winter wheel sets fitted at the factory
- Partition net for luggage compartment separation (and occupant protection)
- Fully digital instrument display
- Decorative elements: open-pored black ash wood



Brief expert findings

Documents submitted	At the time of the inspection, the vehicle registration certificate Part 2 (title) was available, but the vehicle registration certificate Part 1 (document) was not. (Copy)
VIN comparison	The vehicle identification number (VIN) was read from the vehicle and its conformity with the submitted documents was confirmed by the undersigned during the inspection.
Inspection	The inspection conditions were sufficient for the assessment of the vehicle. No lifting equipment or pit was available for inspecting the vehicle. Therefore, inspection of the vehicle's underside was only possible to a limited extent.
Test drive	No test drive/shunting maneuver was carried out during the inspection of the vehicle.
Engine function test	An engine test run was performed.

Value reducing factors

No.	Component group	Description
1	Side panel - rear left side	Sill (Abdeckung) - Loose - Set / adjust
2	Door - front right side	Door - dent(s) - Smart repair
3	Trim / covers	Trim / covers - Scratch(es) - Replace
4	Front bumper	Front bumper - Scratch(es) - Smart repair
5	2nd wheel set	1 alloy rim - Scratch(es) - Loss in value
6	Wheel / tyres	Alloy rim - front right side - Scratched - Loss in value
7	Rear bumper	Spoiler - Scratched - Replace

Wear and tear

No.	Component group	Description
1	Vehicle glazing	Windscreen - Stone chips - No deduction
2	Bonnet	Bonnet - dent(s) - No deduction
3	Mudguard - right side	Wheel well extension - Scratch(es) - No deduction
4	Door - front left side	Door - dent(s) - Smooth repair work

The vehicle shows signs of wear and tear commensurate with its age and use.

Order/Scope of Order

An order was placed to prepare a sales report for the described vehicle. This report includes the following:

- Description of key vehicle information
- Documentation of equipment features
(*Delivery by third-party service providers*)
- Documentation of damage, defects, missing parts
- Documentation of prior damage, unrepaired prior damage, repainting
- A brief visual or functional inspection of the equipment details, if possible.
(*Functional testing of driver assistance systems is not included in the scope of services!*)
- a photographic documentation of the vehicle



Basis for the order

This product is based on the guidelines for vehicle returns and valuations published by Alphabet Fleet GmbH. The expert makes the specific findings in each individual case objectively, within the framework of the prescribed standards, based on their own expertise.

The vehicle inspection takes place in a fully assembled, unassembled state.

Damage or defects that can only be detected during disassembly/diagnostic work or through further investigation remain within the realm of prognostic risk. An increased risk exists due to concealed defects caused by fraudulent misrepresentation and which were not identifiable by the expert.

Damage or defects resulting from normal use or wear and tear of the vehicle will be accepted in accordance with the applicable standard.

There was no explicit identification or monetary consideration of the expected features within the product.

Features which, in their nature and extent, slightly exceed normal use but do not constitute unacceptable damage, will be documented and indicated as signs of wear, if applicable.

Damage or defects that, according to the applicable standard, can no longer be attributed to normal use or wear and tear are listed under "Value Reducing Factors" in the product description.

Depending on the product specification, a monetary ID can be provided. If this takes place, the costs can be 100% d or pro rata depending on the vehicle's age and mileage.

Previous damages

No apparent prior damage that had been repaired could be found on the vehicle.

Comments

Das Fahrzeug weist dem Alter und der Laufleistung entsprechende Gebrauchsspuren auf.

Die Unterbodenbesichtigung war nur ebenerdig & eingeschränkt möglich. Mehrkosten möglich.



Figure 1: Diagonal front (left)



Figure 2: Diagonal front (right)



Figure 3: Diagonal rear (left)



Figure 4: Diagonal rear (right)

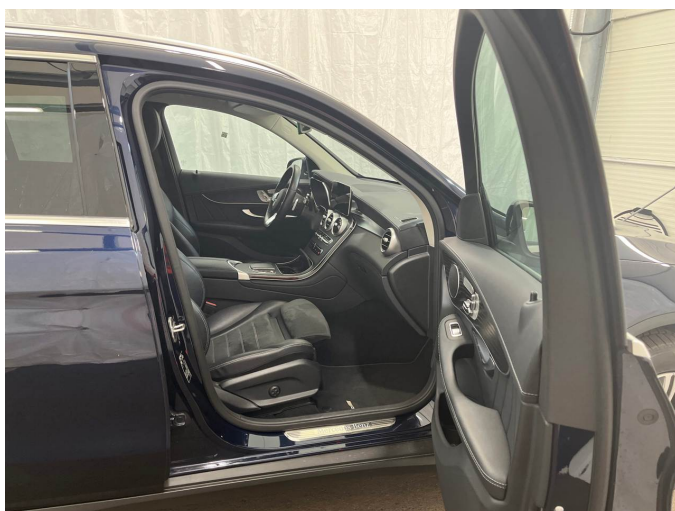


Figure 5: Interior - front



Figure 6: Interior - rear



Figure 7: Instrument cluster



Figure 8: Instrument panel

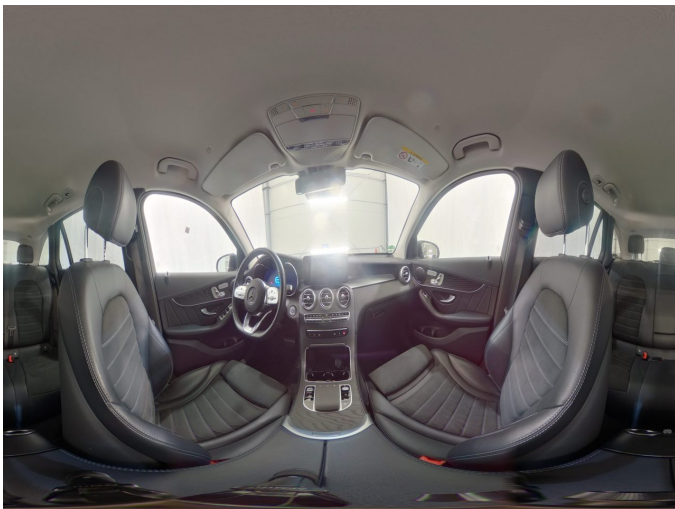


Figure 9: Interior 360° view



Figure 10: Cargo area



Figure 11: VIN



Figure 12: Mounted tyres

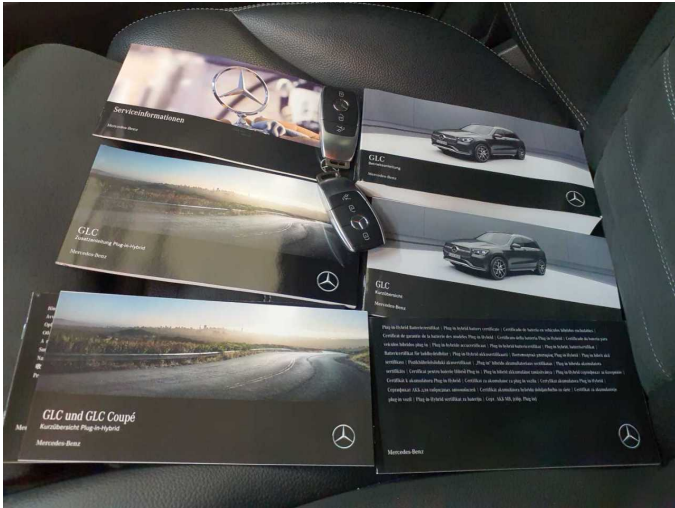


Figure 13: Documents



Figure 14: Documents

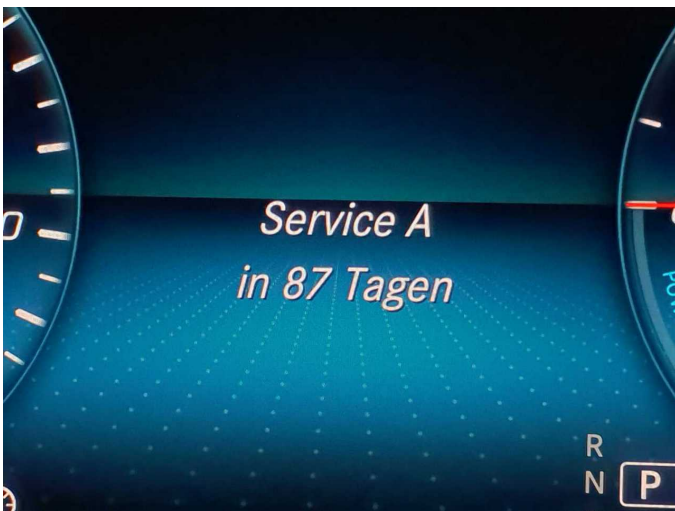


Figure 15: Documents



Figure 16: Additional tyres

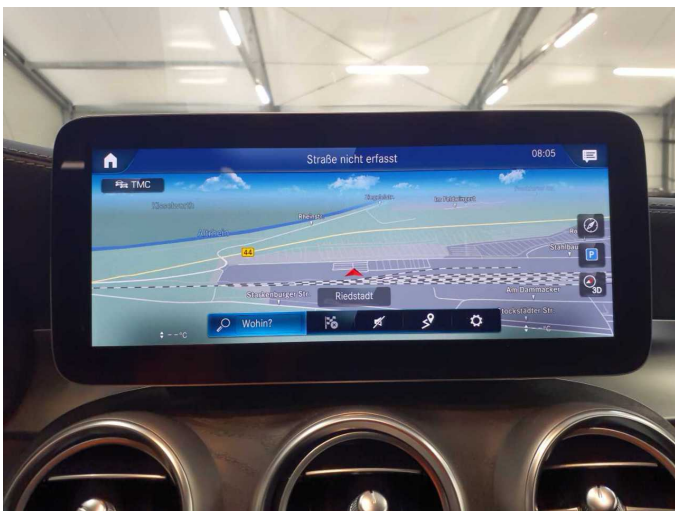


Figure 17: Navigation



Figure 18: Misc.



Figure 19: Misc.



Figure 20: Misc.



Figure 21: Misc.

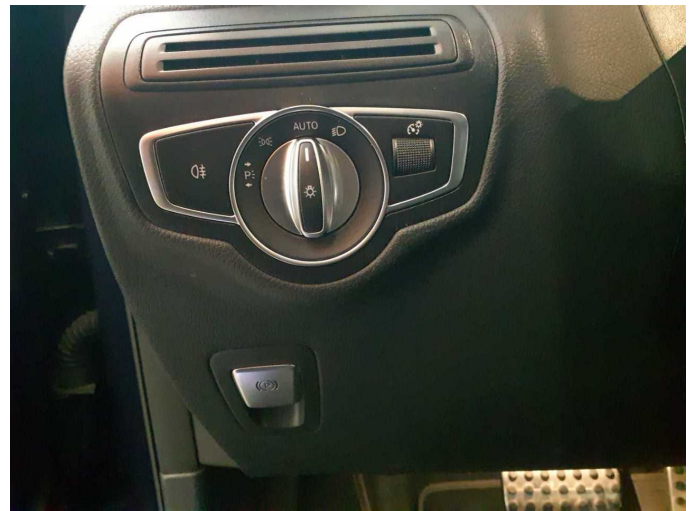


Figure 22: Misc.



Figure 23: Misc.



Figure 24: Misc.

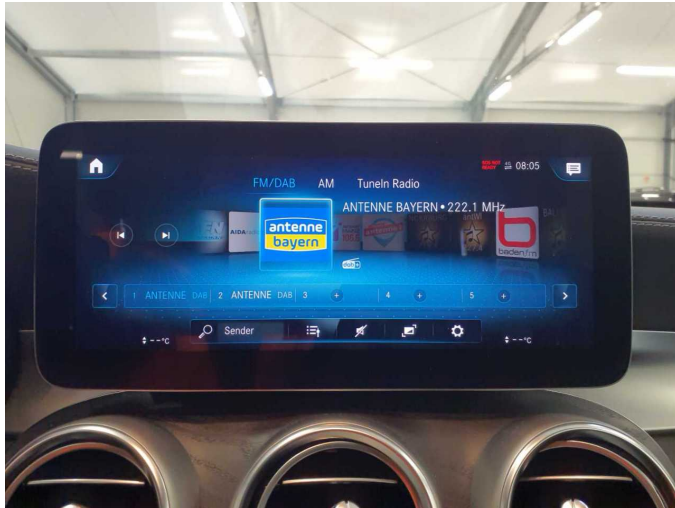


Figure 25: Misc.



Figure 26: Misc.



Figure 27: Misc.

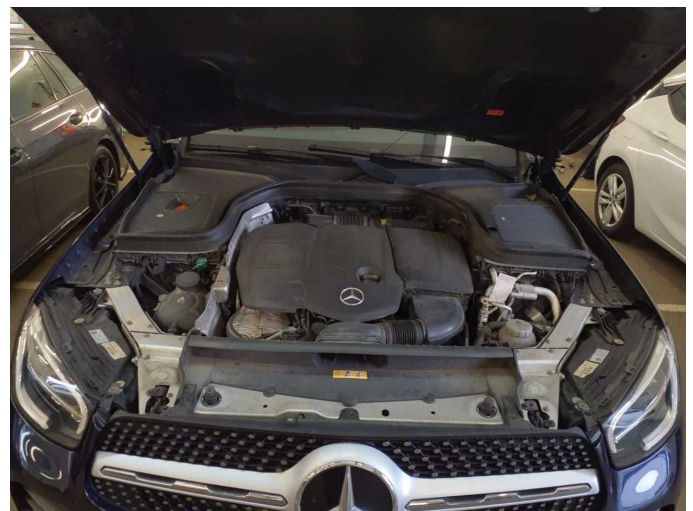


Figure 28: Misc.

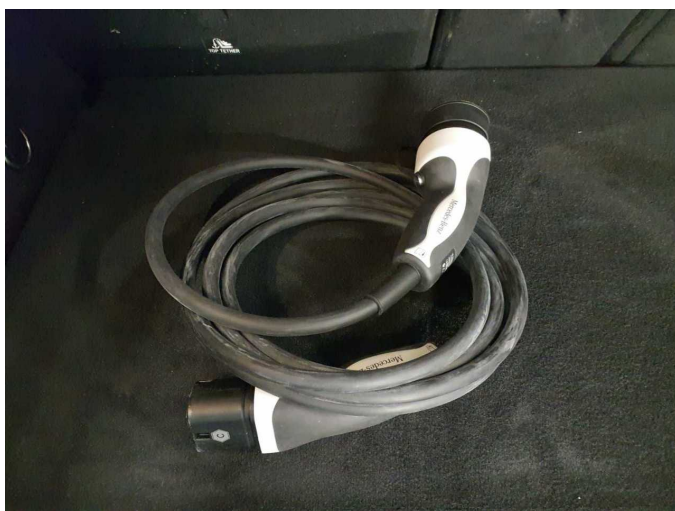


Figure 29: Misc.



Figure 30: Misc.

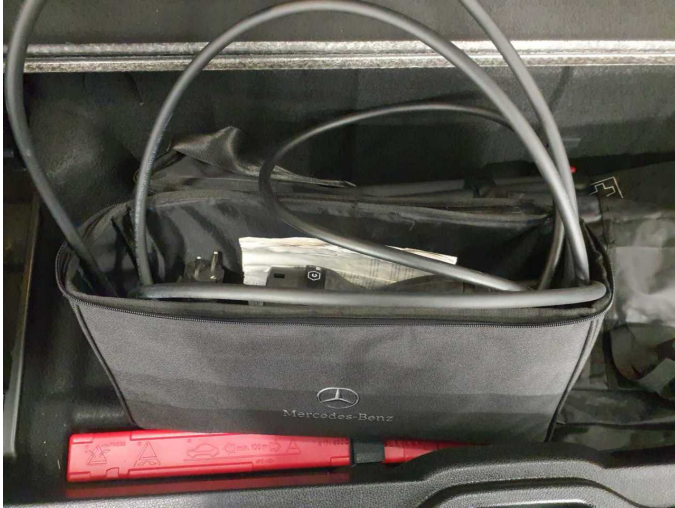


Figure 31: Misc.



Figure 32: Misc.



Figure 33: Misc.

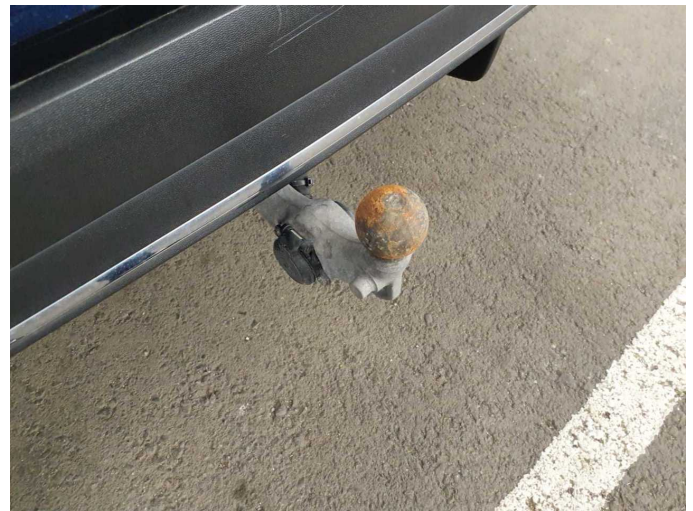
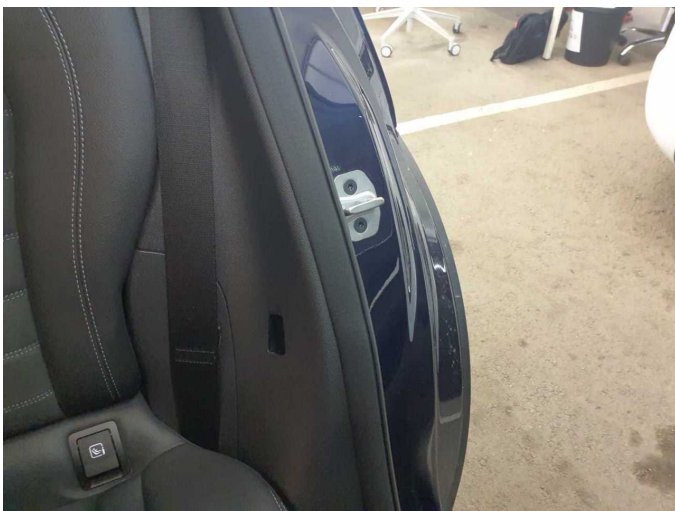


Figure 34: Misc.



Damage 1: Side panel - rear left side: Sill (Abdeckung) - Loose - Set / adjust



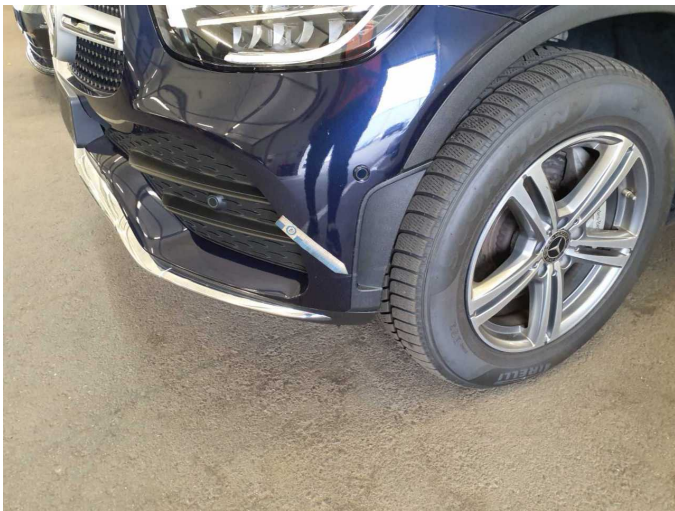
Damage 1: Side panel - rear left side: Sill (Abdeckung) - Loose - Set / adjust



Damage 2: Door - front right side: Door - dent(s) - Smart repair



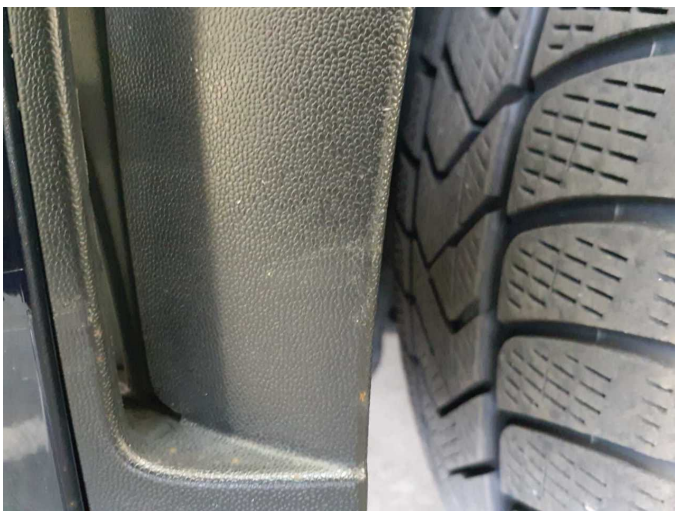
Damage 2: Door - front right side: Door - dent(s) - Smart repair



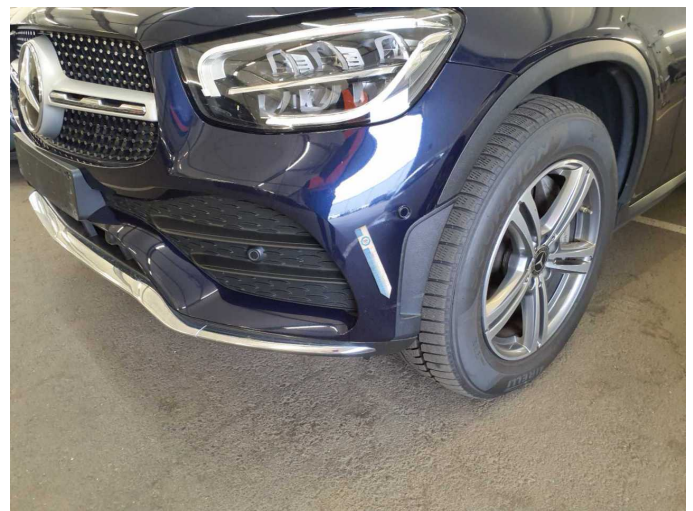
Damage 3: Trim / covers: Trim / covers - Scratch(es) - Replace



Damage 3: Trim / covers: Trim / covers - Scratch(es) - Replace



Damage 3: Trim / covers: Trim / covers - Scratch(es) - Replace



Damage 4: Front bumper: Front bumper - Scratch(es) - Smart repair



Damage 4: Front bumper: Front bumper - Scratch(es) - Smart repair



Damage 5: 2nd wheel set: 1 alloy rim - Scratch(es) - Loss in value



Damage 5: 2nd wheel set: 1 alloy rim - Scratch(es) - Loss in value



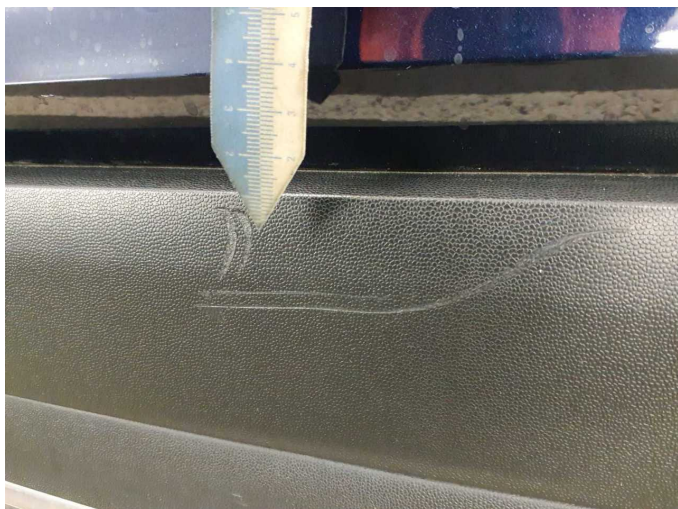
Damage 6: Wheel / tyres: Alloy rim - front right side - Scratched - Loss in value



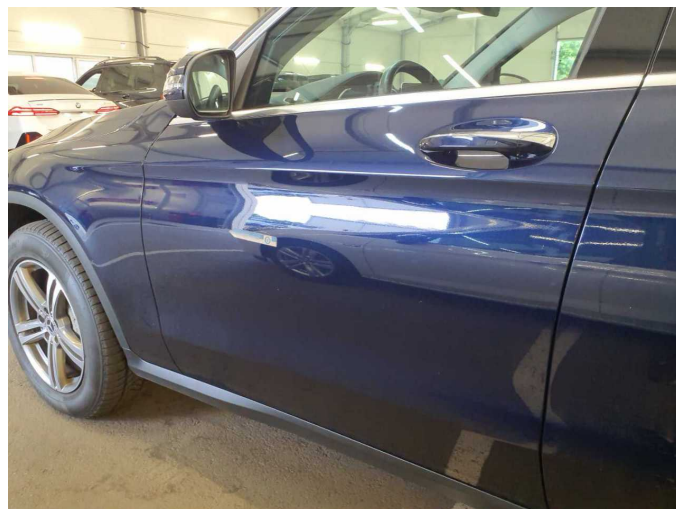
Damage 6: Wheel / tyres: Alloy rim - front right side - Scratched - Loss in value



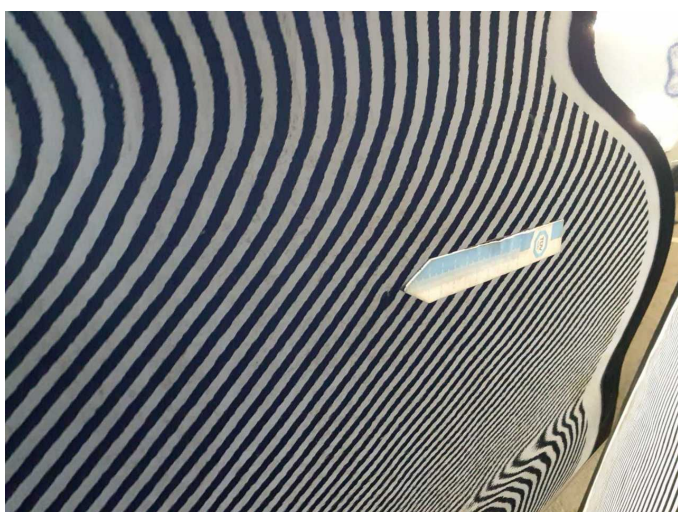
Damage 7: Rear bumper: Spoiler - Scratched - Replace



Damage 7: Rear bumper: Spoiler - Scratched - Replace



Wear and tear 4: Door - front left side: Door - dent(s) - Smooth repair work



Wear and tear 4: Door - front left side: Door - dent(s) - Smooth repair work