

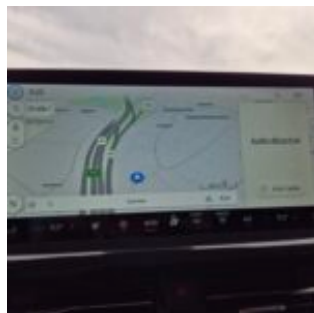
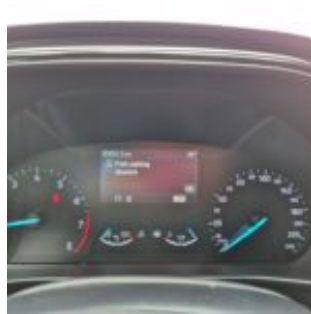
2-DNZ-173

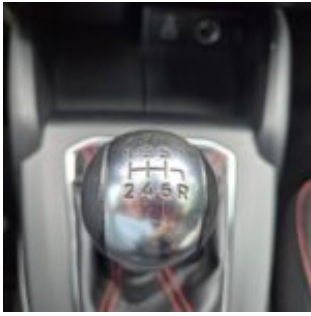
2-DNZ-173 · ST-line 125pk 92kw mHEV M6 5d · 30 June 2026 · Zaventem (BE)

Specifications

License Plate Number	2-DNZ-173	Fuel Type	Hybrid Gasoline
Manufacturer	FORD	VIN	WF0NXXGCHNPL83797
Model	Focus	Cylinder Capacity	999 ^{cm³}
Model Versions	ST-line 125pk 92kw mHEV M6 5d	Transmission Type	Handmatig geschakelde transmissie
Body Type	5 door hatchback	First Admission	10-05-2023
Color	Grey	Odometer	93.001 ^{Km}
Paint Type	Metallic	Numer Of Keys	2
Production Year	2023	Interior	Black
KW	92	Number Headrests	5

Images





Accessories

ABS

Airbags

Alloy wheels

Audio System

Automatic air conditioning

Bluetooth car kit

Central door locking

Centre armrest

Cruise control

Electric rear windows

Electric windows front

Electrically adjustable exterior mirrors

Front & rear parking sensors

Leather steering wheel

Navigation system

Seat heating

Steering wheel multifunction

Steeringwheel - Heated

Windscreen - Heated

Condition

Condition exterior Adequate

Condition interior Adequate

Last Maintenance Unknown

Previous Repairs Unknown

Tire Specifications

Tire	Profile	Brand	Width	Aspect Ratio	Radial	Type
Front Left	2 ^{mm}	Goodyear	215 ^{mm}	50 ^{mm}	17 ^{inch}	All Season
Rear Left	5 ^{mm}	Goodyear	215 ^{mm}	50 ^{mm}	17 ^{inch}	All Season
Front Right	2 ^{mm}	Goodyear	215 ^{mm}	50 ^{mm}	17 ^{inch}	All Season
Rear Right	5 ^{mm}	Goodyear	215 ^{mm}	50 ^{mm}	17 ^{inch}	All Season
Spare Tire Type	Compressor					

Damages



Damage Part
Interior

Damage Type
Stains & dirt

Repair Type
Cleaning

Acceptable
No



Damage Part
Reardoor - Left

Damage Type
Scratch(es)

Notes
Deurgreep

Repair Type
Spray

Acceptable
No



Damage Part
Fender - Rear Left

Damage Type
small dents / small scratches

Repair Type
Panelbeating & Spray

Acceptable
No

Damage Part
Reardoor - Left

Damage Type
Small scratch(es)

Repair Type
Spray

Acceptable
No



Damage Part

Damage Type

Repair Type

Acceptable

Hood

small dents / small scratches

Panelbeating & Spray

No



Damage Part

Damage Type

Repair Type

Acceptable

Bumper - Front

Scratch(es)

Spray

No



Damage Part

Damage Type

Repair Type

Acceptable

Alloy - Right Front

Damaged

Rim repair

No



Damage Part

Damage Type

Repair Type

Acceptable

Fender - Front Right

Small scratch(es)

Polish

No

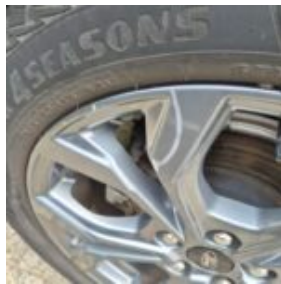


Damage Part
Skirt - Right

Damage Type
Scratch(es)

Repair Type
Spray

Acceptable
No



Damage Part
Alloy - Right Rear

Damage Type
Damaged

Repair Type
Rim repair

Acceptable
No



Damage Part
Frontdoor - Right

Damage Type
Scratch(es)

Repair Type
Spray

Acceptable
No



Damage Part
Reardoor - Right

Damage Type
Small scratch(es)

Repair Type
Spray

Acceptable
No



Damage Part

Damage Type

Repair Type

Acceptable

Fender - Rear Right

Small scratch(es)

Spray

No



Damage Part

Damage Type

Repair Type

Acceptable

Taillight - Left

Scratch(es)

Replace

No



Damage Part

Damage Type

Repair Type

Acceptable

Bumper - Rear

Scratch(es)

Spray

No



Damage Part

Damage Type

Repair Type

Acceptable

Tailgate

Scratch(es)

Spray

No



Damage Part

Damage Type

Repair Type

Acceptable

Roof

Scratch(es)

Spray

No



Damage Part

Damage Type

Repair Type

Acceptable

Trunkshelf

Missing

Replace

No