

Expertise

Protocol number: 46322105
Order No. / Reference: 26510521
Inspection date: 3 Jul 2026

Manufacturer: Volkswagen

Model: Passat Variant 2.0 TDI SCR DSG Business

VIN: WVVZZZ3CZPE009896



Vehicle details

Manufacturer / Type / Model / Equipment

Volkswagen Passat Variant 2.0 TDI SCR DSG Business

Vehicle Identification number WVVZZZ3CZPE009896

Mileage (Read) 150,512 km

First registration 28 Sept 2022

Number of holders 1

Power / Engine displacement 110 kw / 1,968 ccm

Fuel type / Cylinder Diesel / 4

Gearbox / Number of gears Automatic / 7

Type of drive Front drive

Type of vehicle Station wagon

Colour / colour code Mondsteingrau

Doors / Seats 5 / 5

Upholstery type Cloth

Colour of upholstery Black-Grey



Vehicle details			
Maintenance booklet / proof	digital proof / complete	Next maintenance in	24,100 km
Last service on / at	04/2026 at 146,235 km		
Key is / should be	2 / 2	FZG documents	ZB#2 (B) was available (copy), ZB#1 (S) was not available.
		Letter No.	GM705532
Previous damage / Accident	Detectable	Repainting	Detectable
Inspection conditions	sufficient	Lifting equipment / pit	yes
Test drive	Not performed	Engine function test	Performed
Manufacturer key number/ type code number	0603 / BQS 03643		
Emission standard	EURO6;WLTP;AP;PI/CI; M, N1 I	fine dust sticker	
Permitted total weight	2,200 kg	Empty weight	

Tyres

Mounted tyres				
#	Tyre size	Type of tyre	Manufacturer	Tread depth
1)	215/60 R16 95V	Summer tyres on Light alloy	Continental	4mm / 4mm
2)	215/60 R16 95V	Summer tyres on Light alloy	Continental	5mm / 5mm
Additional tyres				
#	Tyre size	Type of tyre	Manufacturer	Tread depth
1)	215/60 R16 99H	Winter tyres on Light alloy	Pirelli	5mm / 5mm
2)	215/60 R16 99H	Winter tyres on Light alloy	Pirelli	6mm / 6mm
Replacement				
Typ	Tyre size	Type of tyre	Manufacturer	Tread depth
	Tirefit	Expiration date 06/2026		

Legend: Tread depth information for the left tire is listed first, for the right tire it is listed second on the axle in the direction of travel.



Equipment

Standard equipment

- Airbag for driver and front passenger
- Anti-lock braking system (ABS)
- Adaptive Cruise Control (ACC) "stop & go", including speed limiter
- Cup holders (2) front
- third brake light
- Headliner in Mistral Grey
- Diesel particulate filter
- Parking aid - warning signals for obstacles in the front and rear area
- Electronic stability program and electromechanical brake booster
- Windscreen made of laminated safety glass, heat and sound insulating
- Transmission: 7-speed DSG
- ISOFIX mounting points
- Front headrests
- LED fog lights and cornering lights
- LED headlights with daytime running lights
- Headlight range control
- Front center armrest, height and length adjustable, with storage box
- Mesh partition
- Emergency braking assistant "Front Assist" (for automatic distance control ACC up to 210 km/h)
- Upholstery: "Business" fabric
- Radio "Composition"
- Radio accessories: Digital radio reception DAB+
- Wheels: 4 light alloy wheels "Sepang" 6.5 J x 16
- Rear bench seat, undivided, backrest asymmetrically split and foldable, with center armrest
- Power steering
- Seats: Comfort seats in the front
- Seats: Front seats are height-adjustable
- Start-stop system
- Telephone interface
- First aid kit, warning triangle and high-visibility vest
- Electronic immobilizer
- Airbag, head airbag system for front and rear passengers
- App-Connect
- Electrically adjustable and heated exterior mirrors, ambient lighting
- Hill start assist
- Chrome trim on the side windows
- black roof rails
- Tachometer
- Entry/warning lights in LED technology in the front doors
- Electronic parking brake including auto-hold function
- Automatic headlight control
- Remote release for luggage compartment lid
- Pedestrian detection
- Adjustable luggage compartment floor
- Interior lights with delayed shut-off and dimming function
- Rear headrests (3)
- Paint finish: Solid
- LED taillights
- Steering wheel: Multifunction steering wheel in leather, with paddle shifters
- "Premium" multifunction display with multicolor screen
- Fatigue detection
- Non-smoking version
- Emergency call service
- Package: Light and Sight Package "Plus"
- Proactive occupant protection system in conjunction with "Front Assist"
- Tire pressure monitoring system (passive)
- Wheels: Tire Mobility Set
- Gearshift knob in leather
- Keyless start system without safe locking
- Seat belts: Three-point automatic seat belt
- Seats: Lumbar support in the front
- Lane keeping assistant "Lane Assist"
- 12V power outlet on the rear of the center console
- Textile floor mats
- Warning tone and light for unfastened seat belts front and rear



Extra equipment

- Towbar, foldable (with electric release)
- Black roof rails with 2 silver anodized support bars (anti-theft protection and included in a storage bag)
- Navigation system "Discover Media" incl. "Streaming & Internet" (4x20 watts, user interface with proximity sensor, dual tuner with phase diversity, vehicle menu, speed, volume adjustment, map, 2D display, tone control, 3-way TFT display with touchscreen operation, navigation "Discover Media" incl. "Streaming & Internet", MP3 radio, telephone contact addresses for navigation, telephone interface, 2 USB ports also for iPod/iPhone, traffic sign recognition "VW Media Control", We Connect Plus, 3 years, incl. We Connect route guidance, dynamic RDS, TMC tuner)
- Package: Winter (front windshield washer nozzles automatically heated - front seats heated)
- "Comfort" telephone interface with inductive charging function (hands-free system)
- App-Connect Wireless (Volkswagen offers three interfaces for connecting smartphones with numerous possibilities: - Apple CarPlay - Android Auto from Google - MirrorLink)
- Package: "Business Premium" package incl. navigation (from Business trim level) (2 USB-C ports in the front, USB-C charging socket in the rear, 230V socket, App-Connect incl. wireless, Apple CarPlay, Android Auto, "Travel Assist" driver assistance system and "Lane Assist" lane keeping assist system, Air Care Climatronic with 3-zone temperature control, active combination filter and rear controls, lumbar support in the front, electric on the driver's side, massage function on the driver's side, "Rear View" reversing camera, heated windshield washer nozzles, Comfort telephone interface, inductive charging function, heated front seats)
- Rear side windows and rear window tinted
- Dividing grid

Brief expert findings

Documents submitted	At the time of the inspection, the vehicle registration certificate Part 2 (title) was available, but the vehicle registration certificate Part 1 (document) was not. (Copy)
VIN comparison	The vehicle identification number (VIN) was read from the vehicle and its conformity with the submitted documents was confirmed by the undersigned during the inspection.
Inspection	The inspection conditions were sufficient for the assessment of the vehicle. Lifting equipment and/or a pit were available for examining the vehicle.
Test drive	No test drive/shunting maneuver was carried out during the inspection of the vehicle.
Engine function test	An engine test run was performed.

Value reducing factors

No.	Component group	Description
1	Equipment	Tirefit filler - Expired - Replace
2	Door - front right side	Door handle - outside - Scratch(es) - Smart repair
3	Side panel - rear right side	Sill - Scratch(es) - Smart repair
4	Side panel - rear left side	Side panel - dent(s) - Smart repair
5	Interior	Interior - Soiled - Clean
6	Trim / covers	Door trim - rear left side - Broken / torn - Replace
7	Door - rear right side	Door - Dent / paintcoat damage - Paint
8	Rear bumper	Rear bumper - Scratched - Paint
9	Vehicle glazing	Windscreen (Sichtfeld) - Stone chips - Replace
10	Vehicle glazing	Rear window - Scratched - Replace

Wear and tear

No.	Component group	Description
1	Front bumper	Front bumper - Stone chips - No deduction
2	Bonnet	Bonnet - Stone chips - No deduction

The vehicle shows signs of wear and tear commensurate with its age and use.



Previous damages

No.	Previous damage	Extent of damage (Net)
1	Front, Provided by user / customer, from 24 Jul 2024	3.658,15 €
2	Front, Rear, Provided by user / customer, from 5 Dec 2023	9.856,80 €

Repainting

No.	Repainting
1	Mudguard - left side, Professionally carried out, Invoice of repair done Non-existent
2	Bonnet, Professionally carried out, Invoice of repair done Non-existent

Paint coat thickness measurement

Mudguard - left side	180 µm	Bonnet	163 µm
----------------------	--------	--------	--------

Order/Scope of Order

An order was placed to prepare a sales report for the described vehicle. This report includes the following:

- Description of key vehicle information
- Documentation of equipment features
(*Delivery by third-party service providers*)
- Documentation of damage, defects, missing parts
- Documentation of prior damage, unrepaired prior damage, repainting
- A brief visual or functional inspection of the equipment details, if possible.
(*Functional testing of driver assistance systems is not included in the scope of services!*)
- a photographic documentation of the vehicle

Basis for the order

This product is based on the guidelines for vehicle returns and valuations published by Alphabet Fleet GmbH. The expert makes the specific findings in each individual case objectively, within the framework of the prescribed standards, based on their own expertise.

The vehicle inspection takes place in a fully assembled, unassembled state.

Damage or defects that can only be detected during disassembly/diagnostic work or through further investigation remain within the realm of prognostic risk. An increased risk exists due to concealed defects caused by fraudulent misrepresentation and which were not identifiable by the expert.

Damage or defects resulting from normal use or wear and tear of the vehicle will be accepted in accordance with the applicable standard.

There was no explicit identification or monetary consideration of the expected features within the product.

Features which, in their nature and extent, slightly exceed normal use but do not constitute unacceptable damage, will be documented and indicated as signs of wear, if applicable.

Damage or defects that, according to the applicable standard, can no longer be attributed to normal use or wear and tear are listed under "Value Reducing Factors" in the product description.

Depending on the product specification, a monetary ID can be provided. If this takes place, the costs can be 100% d or pro rata depending on the vehicle's age and mileage.

Previous damages

According to available information previous damages were repaired at the vehicle. Traces of repairs, which allow conclusions about the area of repair, were not recognizable during the inspection.



Comments

- Der beiliegende Winterradsatz ist kein Bestandteil des Auslieferungsumfangs.



Figure 1: Diagonal front (left)



Figure 2: Diagonal front (right)



Figure 3: Diagonal rear (left)



Figure 4: Diagonal rear (right)



Figure 5: Interior - front



Figure 6: Interior - rear



Figure 7: Instrument cluster



Figure 8: Instrument panel



Figure 9: Interior 360° view



Figure 10: Cargo area



Figure 11: VIN



Figure 12: Mounted tyres

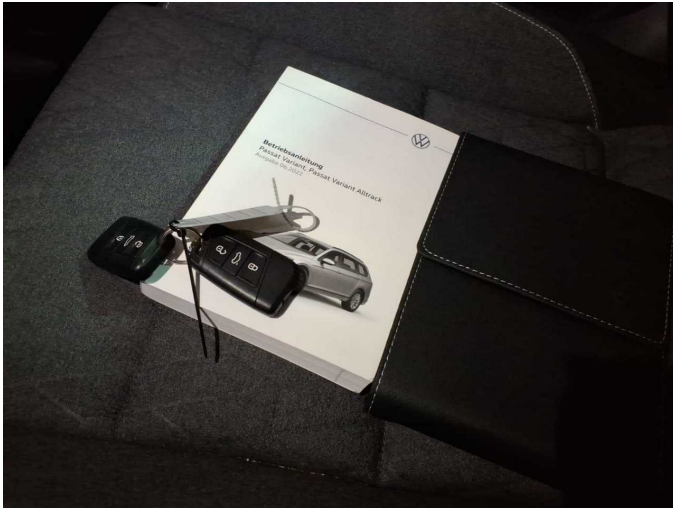


Figure 13: Documents



Figure 14: Additional tyres



Figure 15: Navigation



Figure 16: Misc.

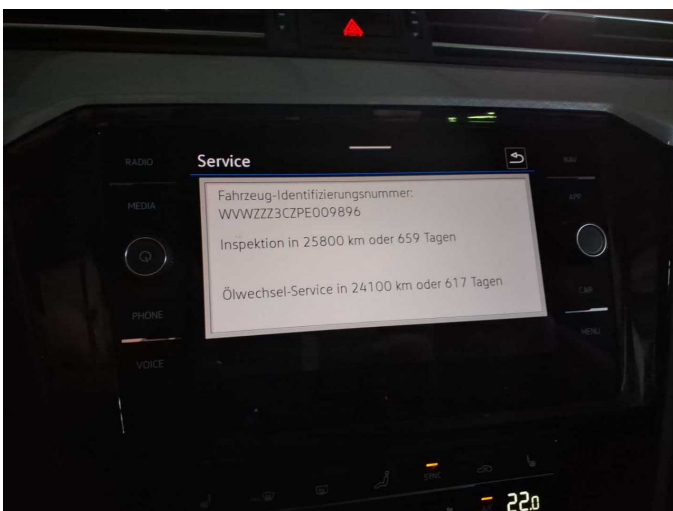


Figure 17: Misc.



Figure 18: Misc.



Figure 19: Misc.



Figure 20: Misc.



Figure 21: Misc.



Figure 22: Misc.



Figure 23: Misc.



Figure 24: Misc.



Figure 25: Misc.

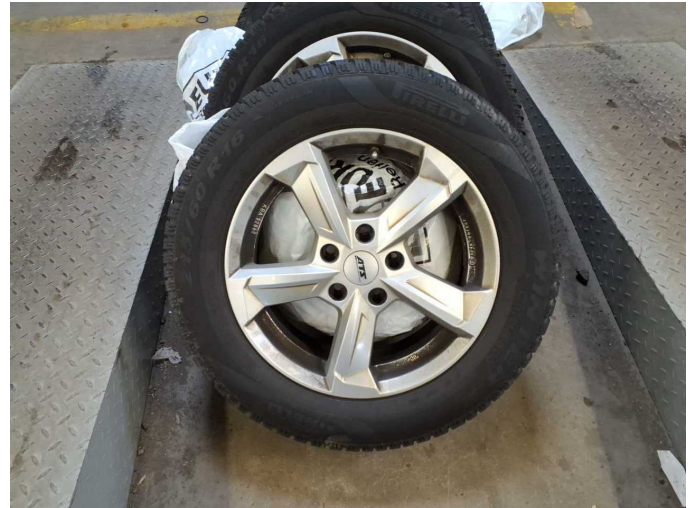


Figure 26: Misc.



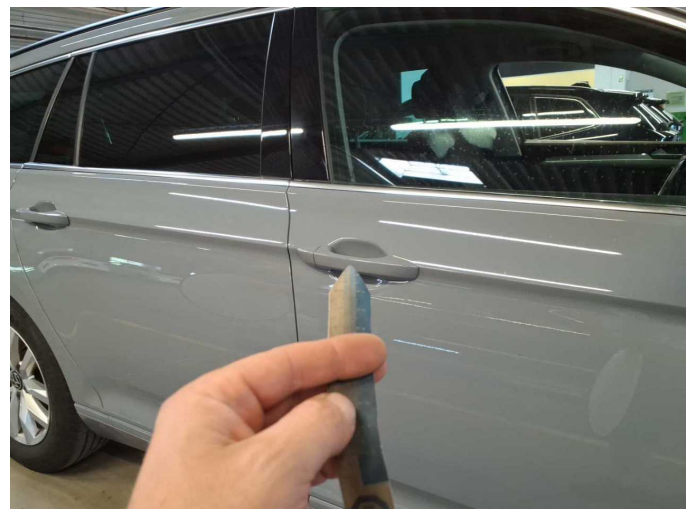
Figure 27: Misc.



Figure 28: Misc.



Damage 1: Equipment: Tirefit filler - Expired - Replace



Damage 2: Door - front right side: Door handle - outside - Scratch(es) - Smart repair



Damage 2: Door - front right side: Door handle - outside - Scratch(es) - Smart repair



Damage 3: Side panel - rear right side: Sill - Scratch(es) - Smart repair



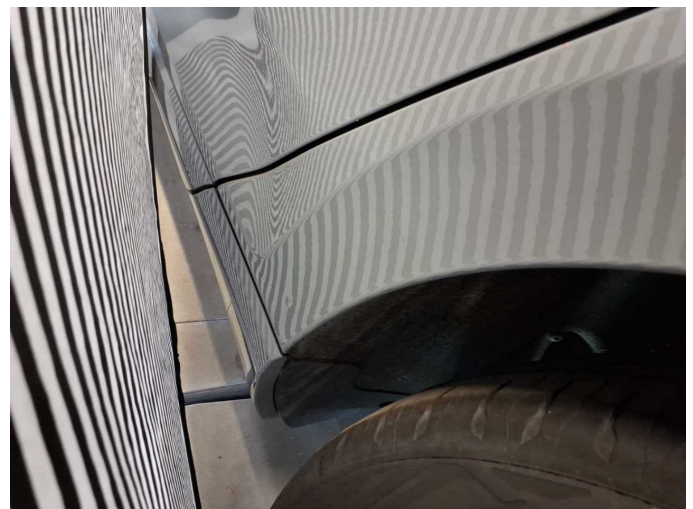
Damage 3: Side panel - rear right side: Sill - Scratch(es) - Smart repair



Damage 4: Side panel - rear left side: Side panel - dent(s) - Smart repair



Damage 4: Side panel - rear left side: Side panel - dent(s) - Smart repair



Damage 4: Side panel - rear left side: Side panel - dent(s) - Smart repair



Damage 5: Interior: Interior - Soiled - Clean



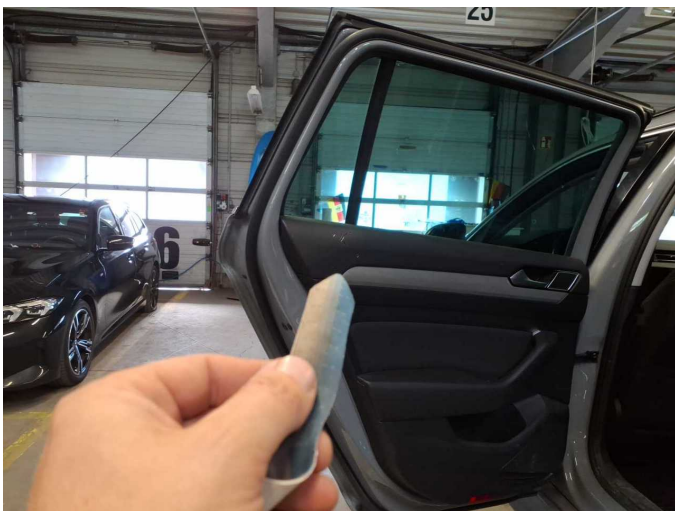
Damage 5: Interior: Interior - Soiled - Clean



Damage 5: Interior: Interior - Soiled - Clean



Damage 5: Interior: Interior - Soiled - Clean



Damage 6: Trim / covers: Door trim - rear left side - Broken / torn - Replace



Damage 6: Trim / covers: Door trim - rear left side - Broken / torn - Replace



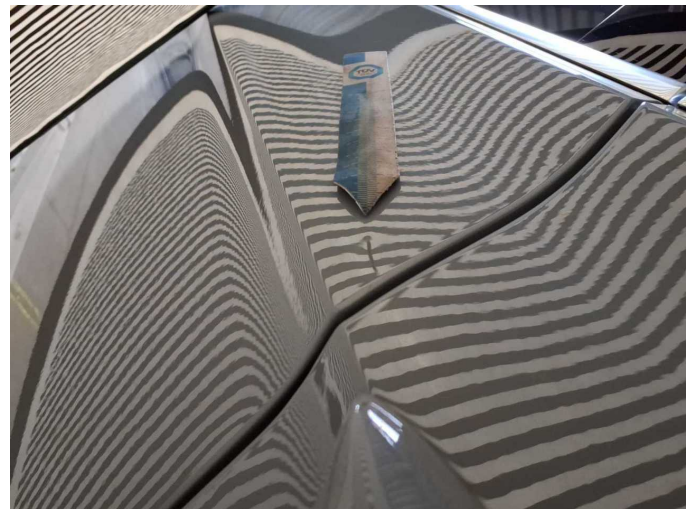
Damage 6: Trim / covers: Door trim - rear left side - Broken / torn - Replace



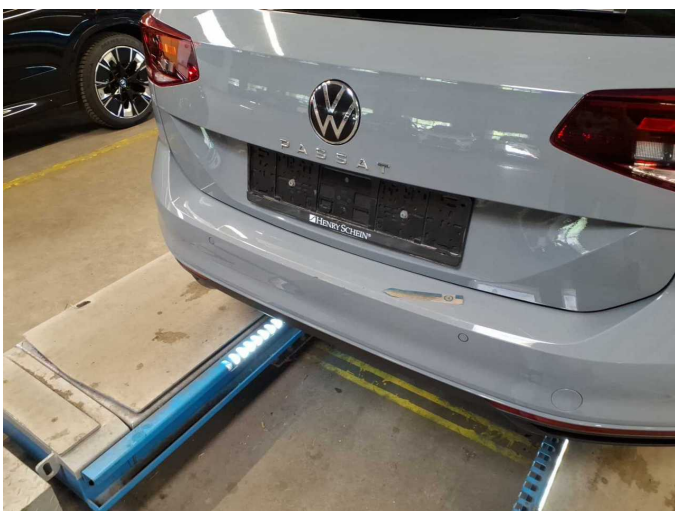
Damage 7: Door - rear right side: Door - Dent / paintcoat damage - Paint



Damage 7: Door - rear right side: Door - Dent / paintcoat damage - Paint



Damage 7: Door - rear right side: Door - Dent / paintcoat damage - Paint



Damage 8: Rear bumper: Rear bumper - Scratched - Paint



Damage 8: Rear bumper: Rear bumper - Scratched - Paint



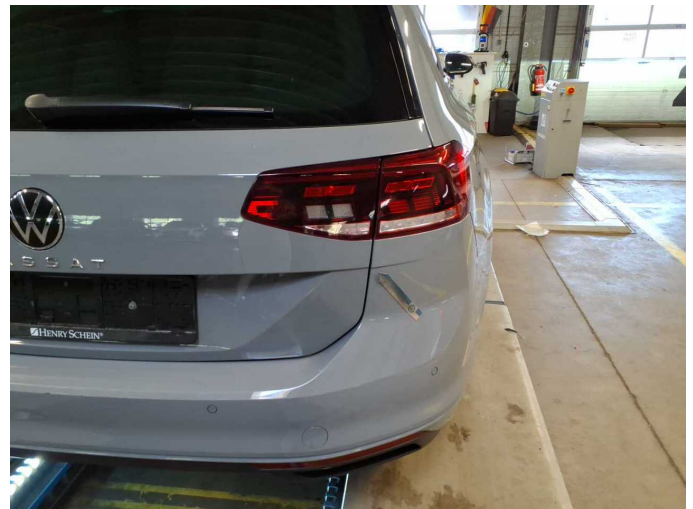
Damage 8: Rear bumper: Rear bumper - Scratched - Paint



Damage 8: Rear bumper: Rear bumper - Scratched - Paint



Damage 8: Rear bumper: Rear bumper - Scratched - Paint



Damage 8: Rear bumper: Rear bumper - Scratched - Paint



Damage 8: Rear bumper: Rear bumper - Scratched - Paint



Damage 9: Vehicle glazing: Windscreen (Sichtfeld) - Stone chips - Replace



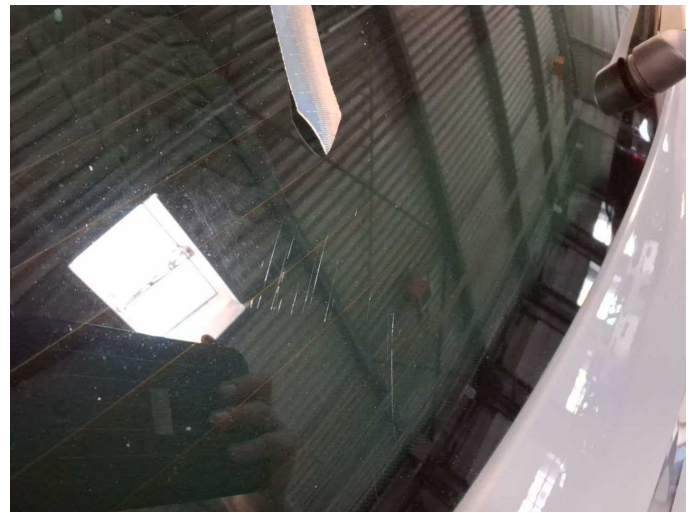
Damage 9: Vehicle glazing: Windscreen (Sichtfeld) - Stone chips - Replace



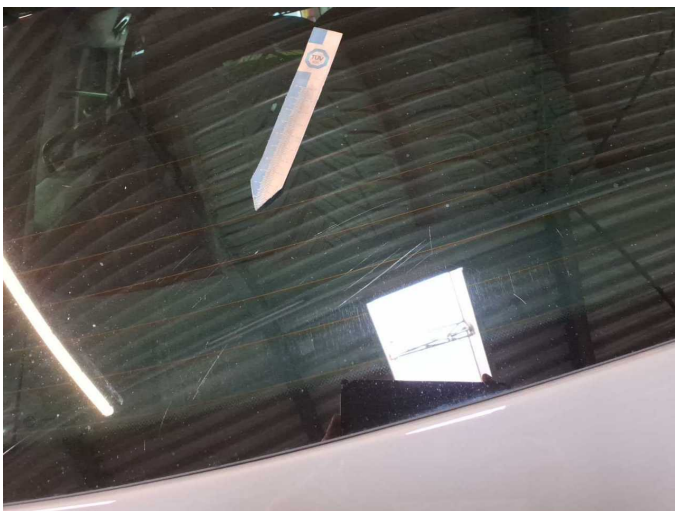
Damage 9: Vehicle glazing: Windscreen (Sichtfeld) - Stone chips - Replace



Damage 10: Vehicle glazing: Rear window - Scratched - Replace



Damage 10: Vehicle glazing: Rear window - Scratched - Replace



Damage 10: Vehicle glazing: Rear window - Scratched - Replace



Repainting 1: Mudguard - left side



Repainting 2: Bonnet



Wartungshistorie

(gemäß Auftraggeber Informationen)

Fahrgestellnummer: WVWZZZ3CZPE009896
Hersteller / Modell: VOLKSWAGEN VOLKSWAGEN Passat Variant 2.0 TDI SCR DSG Business

Datum	KM-Stand	Beschreibung
30.04.2026	146.235	Motoröl b. Wartung; Ölfilter ern; Regelwartungsdienst; Wartung Sonstiges
03.09.2025	119.494	AU; Bremsflüssigkeit; Bremsflüssigkeit ern; Getriebeöl ern/prüfen; Motoröl b. Wartung; Ölfilter ern; Regelwartungsdienst; Wartung Sonstiges
12.03.2025	112.490	Reparatur Sonstiges; Systemtest/Eigendiagnose
28.01.2025	106.185	Bremse Sonstiges; Bremsklötze hinten; Bremsklötze vorne; Bremsscheiben + Klötze h; Bremsscheiben + Klötze v; Bremsscheiben hinten; Bremsscheiben vorne
23.07.2024	92.041	Kraftstofffilter ern; Luftfiltereinsatz ern; Motoröl b. Wartung; Ölfilter ern; Regelwartungsdienst; Systemtest/Eigendiagnose; Wartung Sonstiges
19.01.2024	63.923	Motoröl b. Wartung; Ölfilter ern; Regelwartungsdienst; Wartung Sonstiges
21.09.2023	49.218	Bremse Sonstiges; Bremsklötze hinten; Bremsklötze vorne; Bremsscheiben hinten; Bremsscheiben vorne
28.06.2023	31.714	Motoröl b. Wartung; Ölfilter ern; Regelwartungsdienst; Wartung Sonstiges