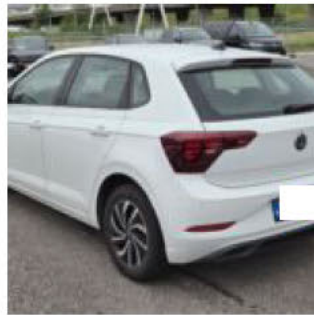


· 1.0 TSI 95pk · 8 June 2026 ·

Specifications

License Plate Number		Cylinder Capacity	999 ^{cm³}
Manufacturer	VOLKSWAGEN	Transmission Type	Handmatig geschakelde transmissie5
Model	Polo		
Model Versions	1.0 TSI 95pk	MOT	13-07-2026
Body Type	5 door hatchback	First Admission	13-07-2022
Color	White	First Registration	13-07-2022
Paint Type	Matte	License Plate 1a Available	
		VAT/Marge	BTW
Production Year	2022	Odometer	212.194 ^{Km}
KW	70	Numer Of Keys	2
Fuel Type	Gasoline	Interior	Darkgrey - Cloth
VIN	WVWZZZAWZNU058964	Number Headrests	5

Images





Accessories

ABS	Electric rear windows
Airbags	Electric windows front
Alloy wheels	Electrically adjustable & heated exterior mirrors
ASR	ESP
Audio System	Front & rear parking sensors
Automatic air conditioning	Leather steering wheel
Bluetooth car kit	Navigation system
Central door locking	Rear view camera
Centre armrest	Roller cover / parcel shelf
Cruise control	Seat heating
Dimming interior mirror	Steering wheel multifunction

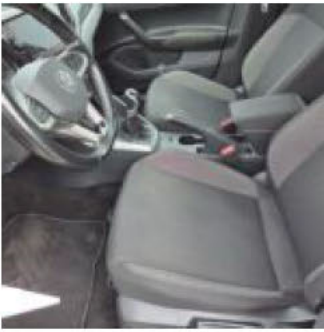
Condition

Condition exterior	Adequate	Last maintenance odometer	175.595
Condition interior	Adequate	Previous Repairs	Unknown
Last Maintenance	01-12-2025	Peculiarities	Volgende onderhoud over 3.100 km.

Tire Specifications

Tire	Profile	Brand	Width	Aspect Ratio	Radial	Type
Front Left	3 ^{mm}	Vredestein	185 ^{mm}	60 ^{mm}	15 ^{inch}	All Season
Rear Left	7 ^{mm}	Vredestein	185 ^{mm}	60 ^{mm}	15 ^{inch}	All Season
Front Right	3 ^{mm}	Vredestein	185 ^{mm}	60 ^{mm}	15 ^{inch}	All Season
Rear Right	7 ^{mm}	Vredestein	185 ^{mm}	60 ^{mm}	15 ^{inch}	All Season
Spare Tire Type	Fully Fledged					
Spare Tire Profile	8 ^{mm}					

Damages



Damage Part

Interior

Damage Type

Stains & dirt

Repair Type

Acceptable

Acceptable

Yes



Damage Part

Alloy - Right Rear



Damage Type

Small scratch(es)

Repair Type

Acceptable

Acceptable

Yes



Damage Part

Bumper - Front



Damage Type

Scratch(es)



Repair Type

Spray

Acceptable

No