

Expertise

Protocol number: 46003178
Order No. / Reference: 26488904
Inspection date: 17 Jun 2026

Manufacturer: Ford

Model: Grand Tourneo Connect 2.0 EcoBlue TITANIUM

VIN: WF0EXXSK7PX010354



Vehicle details

Manufacturer / Type / Model / Equipment

Ford Grand Tourneo Connect 2.0 EcoBlue TITANIUM

Vehicle Identification number WF0EXXSK7PX010354

Mileage (Read) 118,217 km

First registration 25 Apr 2023

Number of holders 1

Power / Engine displacement 90 kw / 1,968 ccm

Fuel type / Cylinder Diesel / 4

Gearbox / Number of gears Manual / 6

Type of drive Front drive

Type of vehicle Van

Colour / colour code Frost Weiß

Doors / Seats 5 / 5

Upholstery type Cloth

Colour of upholstery Anthracite-Black



Vehicle details

Maintenance booklet / proof	Available / incomplete	Next maintenance in	18,000 km
Last service on / at	11/2023 at 28,729 km		
Key is / should be	2 / 2	FZG documents	ZB#2 (B) was available (copy), ZB#1 (S) was not available.
		Letter No.	GT890998
Previous damage / Accident	None detectable	Repainting	None detectable
Inspection conditions	sufficient	Lifting equipment / pit	yes
Test drive	Not performed	Engine function test	Performed
Manufacturer key number/ type code number	8566 / BVY 00118		
Emission standard	EURO6;WLTP;AP;PI/CI; M, N1 I	fine dust sticker	
Permitted total weight	2,300 kg	Empty weight	

Tyres

Mounted tyres

#	Tyre size	Type of tyre	Manufacturer	Tread depth
1)	205/60 R16 96W	Summer tyres on Light alloy	Pirelli	4mm / 4mm
2)	205/60 R16 96W	Summer tyres on Light alloy	Pirelli	4mm / 4mm

Replacement

Typ	Tyre size	Type of tyre	Manufacturer	Tread depth
E	205/60 R16 96H	Summer tyres on Light alloy	Nexen	6 mm

Legend: Tread depth information for the left tire is listed first, for the right tire it is listed second on the axle in the direction of travel.



Equipment

Standard equipment

- Anti-lock braking system (ABS)
- Exterior mirror caps, painted black
- Tires: 6.5 J x 16 alloy wheels (4) with 205/60 R16
- Front overhead storage compartment
- Diesel particulate filter (DPF)
- Electric front windows
- Plastic luggage compartment cover, shaped
- Halogen headlights with daytime running lights
- Tailgate handle, painted in body color
- Interior mirror automatically dimming
- Isofix bracket
- Headrests: 2 front and 3 rear, height adjustable
- Paint finish: Solid
- Steering wheel: Multifunction leather steering wheel, 4 spokes
- Fog light
- Package: Seat Package 18
- Upholstery: Cloth
- Windscreen wipers with rain sensor
- Side windows fixed, 2nd row, right and left
- Start-stop system
- Daytime running light
- Carpeted floor in the luggage compartment
- Child safety lock on sliding doors
- Doors: Sliding door, right and left
- Front door interior trim with illuminated switches including door storage compartments for 1.5 L bottles
- Electronic immobilizer
- Central locking: 2nd remote control key for central locking

Extra equipment

- Fixed towbar including ESP trailer stabilization
- spare wheel, alloy wheel
- Safety partition net for luggage compartment

- Exterior mirrors, electrically adjustable, heated and electrically folding
- third brake light
- Roof rails, silver-colored
- Tachometer
- Ford Power Start function
- Transmission: 6-speed manual transmission
- Illuminated glove compartment with lid
- Back window, heater
- Intelligent Protection System (IPS)
- Front air conditioning, manual, with semi-electronic recirculation function
- Leather gear knob
- Adjustable steering column
- Front center console "Premium"
- Package: Driver Assistance Package 1
- Pollen and dust filter
- Tire Pressure Monitoring System (TPMS)
- Headlight assistant with day/night sensor
- Bench seat (in the 2nd row, 3 seats)
- Rear bumper painted in body color
- Carpet (1st and 2nd row)
- Carpet floor mats for the front (2-piece set)
- Doors: Rear swing door
- Door handles painted in car color
- circulating air heating
- USB port for the 2nd row of seats
- Heat-insulating glazing, tinted (from the B-pillar)
- Auxiliary heater, electric

- Radio equipment: Audio system 4 (Ford navigation system - 10" touchscreen (25.4 cm screen diagonal) in the center console - digital radio reception DAB/DAB+ (Digital Audio Broadcasting) - AM/FM antenna - 6 speakers - voice control for audio and telephone - support for Android Auto and Apple CarPlay)

Brief expert findings

Documents submitted	At the time of the inspection, the vehicle registration certificate Part 2 (title) was available, but the vehicle registration certificate Part 1 (document) was not. (Copy)
VIN comparison	The vehicle identification number (VIN) was read from the vehicle and its conformity with the submitted documents was confirmed by the undersigned during the inspection.
Inspection	The inspection conditions were sufficient for the assessment of the vehicle. Lifting equipment and/or a pit were available for examining the vehicle.
Test drive	No test drive/shunting maneuver was carried out during the inspection of the vehicle.
Engine function test	An engine test run was performed.



Value reducing factors

No.	Component group	Description
1	Misc.	Main inspection - No evidence - No deduction
2	Trim / covers	Door trim - front right side - Scratched - Smart repair
3	Side panel - rear right side	Interior trim - Scratched - Loss in value
4	Side panel - rear left side	Interior trim - Scratched - Loss in value
5	Trim / covers	C-pillar - trim - interior, left side - Scratched - Replace
6	Seat - rear	Table - Scratched - Replace
7	Instrument panel	Centre console - front - Scratched - Smart repair
8	Rear bumper	Rear bumper - Scratched - Paint

Wear and tear

No.	Component group	Description
1	Trim / covers	Boot lid - interior trim - Scratched - No deduction
2	Vehicle glazing	Windscreen - Stone chips - No deduction
3	Front bumper	Front bumper - Stone chips - No deduction
4	Bonnet	Bonnet - Stone chips - No deduction

The vehicle shows signs of wear and tear commensurate with its age and use.

Order/Scope of Order

An order was placed to prepare a sales report for the described vehicle. This report includes the following:

- Description of key vehicle information
- Documentation of equipment features
(*Delivery by third-party service providers*)
- Documentation of damage, defects, missing parts
- Documentation of prior damage, unrepaired prior damage, repainting
- A brief visual or functional inspection of the equipment details, if possible.
(*Functional testing of driver assistance systems is not included in the scope of services!*)
- a photographic documentation of the vehicle

Basis for the order

This product is based on the guidelines for vehicle returns and valuations published by Alphabet Fleet GmbH. The expert makes the specific findings in each individual case objectively, within the framework of the prescribed standards, based on their own expertise.

The vehicle inspection takes place in a fully assembled, unassembled state.

Damage or defects that can only be detected during disassembly/diagnostic work or through further investigation remain within the realm of prognostic risk. An increased risk exists due to concealed defects caused by fraudulent misrepresentation and which were not identifiable by the expert.

Damage or defects resulting from normal use or wear and tear of the vehicle will be accepted in accordance with the applicable standard.

There was no explicit identification or monetary consideration of the expected features within the product.

Features which, in their nature and extent, slightly exceed normal use but do not constitute unacceptable damage, will be documented and indicated as signs of wear, if applicable.

Damage or defects that, according to the applicable standard, can no longer be attributed to normal use or wear and tear are listed under "Value Reducing Factors" in the product description.

Depending on the product specification, a monetary ID can be provided. If this takes place, the costs can be 100% d or pro rata depending on the vehicle's age and mileage.



Previous damages

No apparent prior damage that had been repaired could be found on the vehicle.



Figure 1: Diagonal front (left)



Figure 2: Diagonal front (right)



Figure 3: Diagonal rear (left)



Figure 4: Diagonal rear (right)

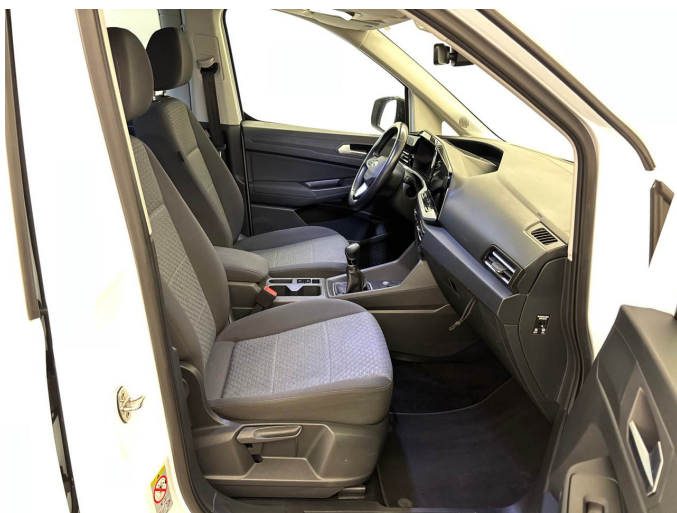


Figure 5: Interior - front



Figure 6: Interior - rear



Figure 7: Instrument cluster



Figure 8: Instrument panel



Figure 9: Interior 360° view

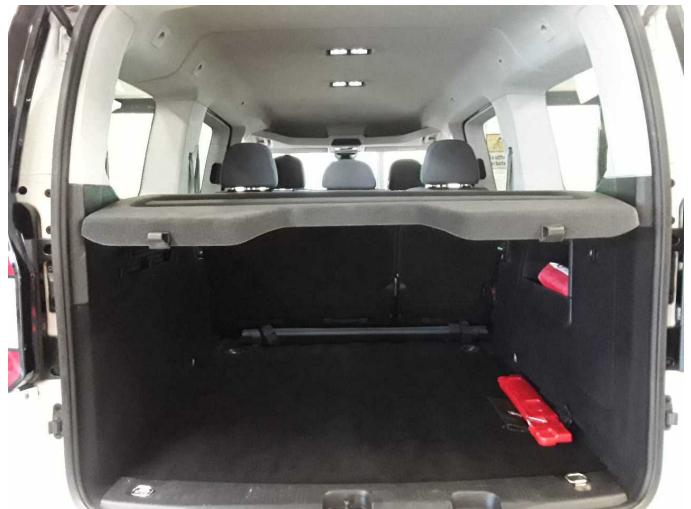


Figure 10: Cargo area

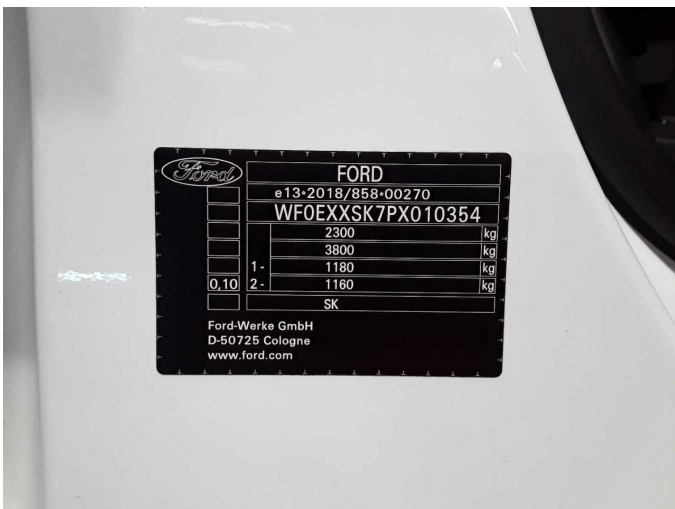


Figure 11: VIN



Figure 12: Mounted tyres



Figure 13: Documents

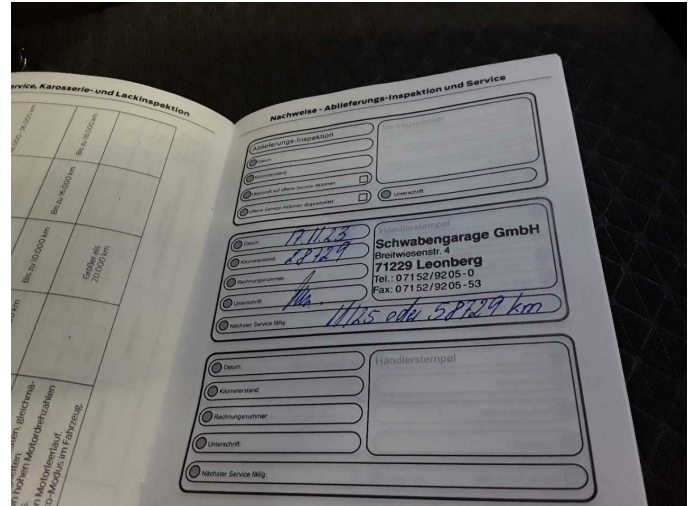


Figure 14: Documents



Figure 15: Navigation



Figure 16: Misc.



Figure 17: Misc.



Figure 18: Misc.



Figure 19: Misc.



Figure 20: Misc.



Figure 21: Misc.



Figure 22: Misc.



Figure 23: Misc.



Figure 24: Misc.



Figure 25: Misc.



Figure 26: Misc.



Damage 2: Trim / covers: Door trim - front right side - Scratched - Smart repair



Damage 2: Trim / covers: Door trim - front right side - Scratched - Smart repair



Damage 3: Side panel - rear right side: Interior trim - Scratched - Loss in value



Damage 3: Side panel - rear right side: Interior trim - Scratched - Loss in value



Damage 4: Side panel - rear left side: Interior trim - Scratched - Loss in value



Damage 4: Side panel - rear left side: Interior trim - Scratched - Loss in value



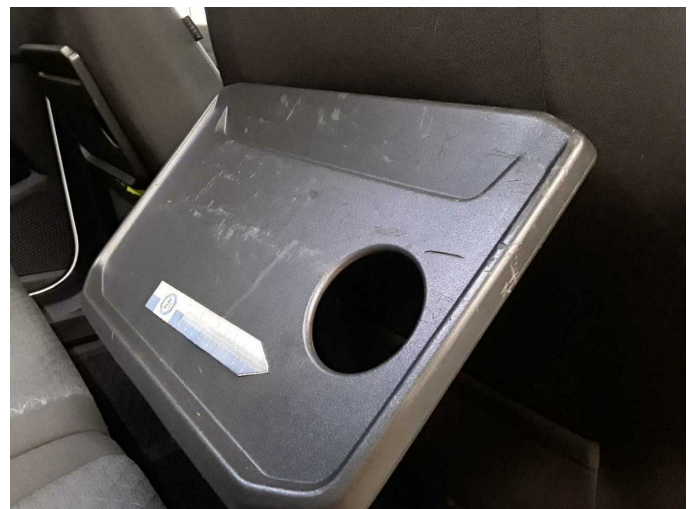
Damage 5: Trim / covers: C-pillar - trim - interior, left side - Scratched - Replace



Damage 5: Trim / covers: C-pillar - trim - interior, left side - Scratched - Replace



Damage 6: Seat - rear: Table - Scratched - Replace



Damage 6: Seat - rear: Table - Scratched - Replace



Damage 7: Instrument panel: Centre console - front - Scratched - Smart repair



Damage 7: Instrument panel: Centre console - front - Scratched - Smart repair



Damage 7: Instrument panel: Centre console - front - Scratched - Smart repair



Damage 7: Instrument panel: Centre console - front - Scratched - Smart repair



Damage 7: Instrument panel: Centre console - front - Scratched - Smart repair



Damage 8: Rear bumper: Rear bumper - Scratched - Paint



Damage 8: Rear bumper: Rear bumper - Scratched - Paint



Damage 8: Rear bumper: Rear bumper - Scratched - Paint



Wear and tear 1: Trim / covers: Boot lid - interior trim - Scratched - No deduction



Wear and tear 2: Vehicle glazing: Windscreen - Stone chips - No deduction



Wear and tear 2: Vehicle glazing: Windscreen - Stone chips - No deduction



Wear and tear 3: Front bumper: Front bumper - Stone chips - No deduction



Wear and tear 3: Front bumper: Front bumper - Stone chips - No deduction



Wear and tear 4: Bonnet: Bonnet - Stone chips - No deduction



Wear and tear 4: Bonnet: Bonnet - Stone chips - No deduction