

Expertise

Protocol number: 46294844
Order No. / Reference: 26154078
Inspection date: 29 Jun 2026

Manufacturer: Mercedes-Benz

Model: Vito 116 CDI 4MATIC Tourer Lang Aut. PRO

VIN: W1VVLFTZ8T4566911



Vehicle details

Manufacturer / Type / Model / Equipment

Mercedes-Benz Vito 116 CDI 4MATIC Tourer Lang Aut. PRO

Vehicle Identification number W1VVLFTZ8T4566911

Mileage (assumed) 16,250 km

First registration 22 Aug 2025

Number of holders 1

Power / Engine displacement 120 kw / 1,950 ccm

Fuel type / Cylinder Diesel / 4

Gearbox / Number of gears Automatic / 9

Type of drive All-wheel drive

Type of vehicle Van

Colour / colour code Hightechsilber Metallic

Doors / Seats 4 / 8

Upholstery type Cloth

Colour of upholstery Black

Type of use rental car



Vehicle details

Maintenance booklet / proof	Non-existent	Next maintenance in	0 Tag(e)
Key is / should be	2 / 2	FZG documents	ZB#2 (B) was available (copy), ZB#1 (S) was not available.
		Letter No.	HP672431
Previous damage / Accident	None detectable	Repainting	None detectable
Inspection conditions	sufficient	Lifting equipment / pit	yes
Test drive	Not performed	Engine function test	With complaint
Manufacturer key number/ type code number	2222 / ABC 02832		
Emission standard	EURO6;WLTP;EB;PI/CI;M, N1, N2	fine dust sticker	
Permitted total weight	3,100 kg	Empty weight	

Tyres

Mounted tyres

#	Tyre size	Type of tyre	Manufacturer	Tread depth
1)	225/55 R17 109T	Winter tyres on Light alloy	Continental	7mm / 7mm
2)	225/55 R17 109T	Winter tyres on Light alloy	Continental	7mm / 7mm

Legend: Tread depth information for the left tire is listed first, for the right tire it is listed second on the axle in the direction of travel.

TÜV SÜD Auto Partner GmbH
Wiesenring 2
04159 Leipzig

Inspection location
ARS Altmann AG Automobillogistik
Lilienthalstraße 2
29693 Hodenhagen



Equipment



Standard equipment

- ABS, ESP, ASR, EBV, BAS (Anti-lock Braking System (ABS) - Electronic Stability Program (ESP) - Traction Control (ASR) - Electronic Brakeforce Distribution (EBV) - Brake Assist (BAS))
- Airbag: Thorax-pelvis-sidebag for driver
- Airbag: Windowbag for driver and front passenger
- Permanent all-wheel drive
- Increased load capacity to 3,100 kg
- Electrically adjustable and heated exterior mirrors, left and right
- Outdoor temperature display
- Fixing points in the roof frame
- Brake assist, active
- Brake lights, adaptive
- Front cupholder
- Diesel particulate filter and SCR
- Entry grab handle for the cargo area sliding door
- Chassis: Standard chassis
- Misfueling protection
- Left/right window in SW/ Cargo area sliding door
- Front right window fixed in SW/ cargo area sliding door
- electric parking brake
- Generator 14 V / 200 A
- Transmission: 9G-TRONIC
- Seatbelt warning device for front passenger seat
- Seatbelt warning device for driver's seat
- Grab handle in the rear
- Lockable glove box
- Boot lid
- HOLD function
- Interior lights in the rear
- Interior mirror (rearview mirror)
- Intelligent speed assistant
- Child safety locks on doors in the passenger compartment
- Instrument cluster with color display
- Communication module (LTE) for digital services
- Large fuel tank, approx. 70 liters
- leather steering wheel
- Steering wheel: Multifunction steering wheel
- Mercedes-Benz emergency call system
- Navigation: Navigation pre-installation
- Package: BlueEFFICIENCY (Efficiency Package)
- Upholstery: Caluma fabric, black
- Radio: MBUX multimedia system (high-resolution 10.25-inch touchscreen, Bluetooth interface with hands-free function, USB-C port, digital radio (DAB), setup of up to 7 profiles via Mercedes me, voice assistant with seat-specific voice recognition, technical requirements for over-the-air updates, satellite view, social navigation, dynamic offboard routing* (additional route alternatives), online music)
- Sliding door: Active stop
- Crosswind Assist
- Screw-in towing eye front/rear
- Passenger side airbag
- Driver's side airbag
- Airbag: Thorax airbag - Pelvis side airbag for front passenger
- Active Lane Keeping Assist
- ATTENTION ASSIST (ATTENTION ASSIST can assist the driver on long, monotonous journeys by monitoring attention. If signs of fatigue or increasing inattention are detected, it suggests a break.)
- Battery: fleece battery 12 V / 92 Ah
- Hill start assist
- third brake light
- COC documents
- Roof cladding
- Electronic tachometer
- Driving light assistant (automatically switching on driving lights)
- Window in rear door/tailgate (with wiper/washer system)
- Front left window fixed in SW/ cargo area sliding door
- Electric window regulator driver/passenger (with anti-pinch protection, quick lowering and raising)
- Generator management (Generator management helps reduce fuel consumption and CO2 emissions. The generator is switched off and the vehicle's electrical system is powered by the battery when it is sufficiently charged. This relieves the engine of the burden of charging the battery, for example, during acceleration. - When braking and during coasting downhill, the generator is switched on and the vehicle's kinetic energy is recuperated to charge the battery.)
- Interior trim, high-end finish
- Passive child detection in the vehicle
- Tempmatic controlled air conditioning
- Comfort closing (comfort opening and closing of windows)
- Headrests (2), front
- Plastic floor TPO passenger compartment
- Steering wheel adjustable for tilt and height
- Headlight range control
- Navigation accessories: Live Traffic Information
- Package: Aerodynamics
- Breakdown management
- Radio: Digital Radio DAB
- Radio accessories: 2-way speakers front + rear.
- Full wheel cover
- Tires: Tires without specified make
- Tires: Premium protection tires (3 years)
- Tire pressure monitoring (on front and rear axles (wireless))
- Wheels: Premium complete wheel protection (3 years)
- Headlights: halogen technology
- Sliding door on the right, cargo/passenger compartment
- electromechanical power steering
- Seats: Rear seat mounting with quick-release fasteners, 2 rows of seats
- Start-stop function



- Seats: 3-seater bench, 2nd row
- Seats: Passenger seat cushion depth adjustment
- Seats: Driver's seat cushion depth adjustment
- 12V socket
- Ambient lighting tailgate
- Updates to the intelligent speed assistant
- Pre-installation for Remote Services Plus
- Warning triangle
- Immobiliser
- Central locking with radio remote control
- Car registration

Extra equipment

- Distance Assist DISTRONIC active (automatic transmission) (including HOLD function)
- Towing capacity 2500 kg
- Towbar (detachable ball head)
- Comfort roof control unit
- Enhanced automatic restart on highways
- Generator 14 V / 250 A
- Semi-automatic air conditioning, TEMPATIC in the rear
- Paint finish: Metallic
- Night lighting rear
- Package: Chrome Interior Package (chrome trim: in instrument panel and door trim, air vents, climate control elements, door control panel surround, center console in gloss black)
- Package: Winter Package (heated windscreen - heated seats for driver and front passenger - pockets on driver and front passenger seatbacks - heated multifunction steering wheel)
- Rear door: Rear swing doors, opening to side wall
- Sliding door on the left (cargo area)
- Seat: Lumbar support driver's seat
- Seats: Passenger compartment 1st row, 3-seater bench / Comfort (outer seat foldable)
- Seats: Comfort passenger seat
- Bumpers painted in body color
- Traffic Sign Assistant

- Blind Spot Assist
- Ambient lighting in the exterior mirrors
- First aid kit
- Warm air duct to the passenger compartment
- ASSYST maintenance interval indicator
- Heat-insulating glass
- Auxiliary heater, electric

- Active Speed Limit Assist
- Active Steering Assist (Active Emergency Stop Assist - Emergency Lane Function)
- Tinted rear windows, black glass
- Roof rails (instead of C-rails)
- All-weather floor mats
- Rear camera not foldable
- chrome-plated radiator grille
- Multibeam LED with High Beam Assist PLUS
- Navigation
- Package: Driver Assistance Package
- Package: Parking package with reversing camera
- Package: Smartphone Integration Package
- Package: Mirrors (automatically dimming interior mirror - automatically dimming exterior mirror - electrically folding exterior mirrors)
- Tires: M+S 225/55 R 17
- Wheels: Alloy wheels 7 J x 17, 20-spoke design
- Electric suction fan, power level 5
- Seat: Lumbar support, passenger seat
- Seats: 3-seat rail system (with quick-release mechanism)
- Seats: Passenger compartment 2nd row, 3-seater bench / Comfort (outer seat foldable)
- Seats: Comfort driver's seat
- Route-based speed adjustment
- Auxiliary heating (hot water)

Brief expert findings

Documents submitted	At the time of the inspection, the vehicle registration certificate Part 2 (title) was available, but the vehicle registration certificate Part 1 (document) was not. (Copy)
VIN comparison	The vehicle identification number (VIN) was read from the vehicle and its conformity with the submitted documents was confirmed by the undersigned during the inspection.
Inspection	The inspection conditions were sufficient for the assessment of the vehicle. Lifting equipment and/or a pit were available for examining the vehicle.
Test drive	No test drive/shunting maneuver was carried out during the inspection of the vehicle.
Engine function test	An engine test run was performed, problem has been detected This is due to the following reason.: Kombiinstrument o.f



Value reducing factors

No.	Component group	Description
1	Interior	Interior (Verschmutzt) - Clean
2	Wheel / tyres	Alloy rim - front right side - Scratch(es) - Loss in value
3	Instrument panel	Instrument cluster - Non-operational - Perform diagnosis
4	Mudguard - left side	Mudguard - left side - Scratched - Repair and paint
5	Mudguard - right side	Mudguard - right side - Deformed - Repair and paint
6	Vehicle glazing	Windscreen - Stone chips - Replace
7	Front bumper	Front bumper (inkl. Halter links + rechts erneuern) - Broken / torn - Replace
8	Headlight	Headlight - left side (+ rechts) - Missing - Replace

Paint coat thickness measurement

Roof	120 µm	Roof rail - left side	105 µm
Roof rail - right side	109 µm	Boot lid / rear door	100 µm
Mudguard - left side	102 µm	Mudguard - right side	108 µm
Bonnet	118 µm	Side panel - rear left side	100 µm
Side panel - rear right side	102 µm	Door - rear left side	102 µm
Door - rear right side	99 µm	Door - front left side	99 µm
Door - front right side	99 µm		

Order/Scope of Order

An order was placed to prepare a sales report for the described vehicle. This report includes the following:

- Description of key vehicle information
- Documentation of equipment features
(Delivery by third-party service providers)
- Documentation of damage, defects, missing parts
- Documentation of prior damage, unrepaired prior damage, repainting
- A brief visual or functional inspection of the equipment details, if possible.
(Functional testing of driver assistance systems is not included in the scope of services!)
- a photographic documentation of the vehicle



Basis for the order

This product is based on the guidelines for vehicle returns and valuations of light commercial vehicles published by Alphabet Fleet Management GmbH. The expert makes the specific findings in each individual case objectively, within the framework of the prescribed standards, based on their own expertise.

The vehicle inspection takes place in a fully assembled, unassembled state.

Damage or defects that can only be detected during disassembly/diagnostic work or through further investigation remain within the realm of prognostic risk. An increased risk exists due to concealed defects caused by fraudulent misrepresentation and which were not identifiable by the expert.

Damage or defects resulting from normal use or wear and tear of the vehicle will be accepted in accordance with the applicable standard.

There was no explicit identification or monetary consideration of the expected features within the product.

Features which, in their nature and extent, slightly exceed normal use but do not constitute unacceptable damage, will be documented and indicated as signs of wear, if applicable.

Damage or defects that, according to the applicable standard, can no longer be attributed to normal use or wear and tear are listed under "Value Reducing Factors" in the product description.

Depending on the product specification, a monetary ID can be provided. If this takes place, the costs can be 100% d or pro rata depending on the vehicle's age and mileage.

Previous damages

No apparent prior damage that had been repaired could be found on the vehicle.

Comments

- Kilometerstand nicht ablesbar. Angabe lt. vorliegenden Informationen. Die korrekte Laufleistung kann abweichen, Mehrkosten können entstehen.



Figure 1: Diagonal front (left)



Figure 2: Diagonal front (right)



Figure 3: Diagonal rear (left)



Figure 4: Diagonal rear (right)

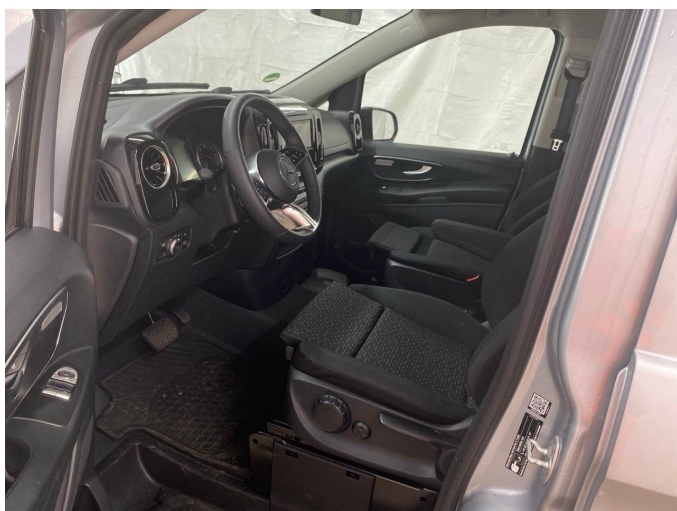


Figure 5: Interior - front



Figure 6: Interior - rear



Figure 7: Instrument cluster



Figure 8: Instrument panel



Figure 9: Interior 360° view



Figure 10: Cargo area



Figure 11: VIN



Figure 12: Mounted tyres



Figure 13: Documents



Figure 14: Navigation



Figure 15: Misc.



Figure 16: Misc.



Figure 17: Misc.

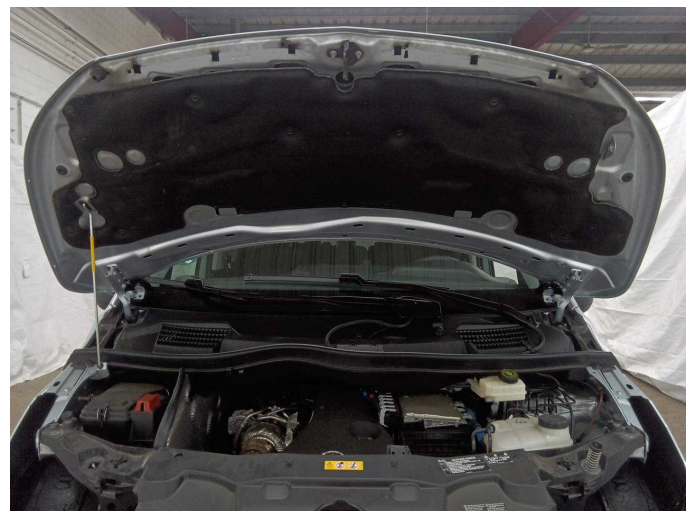


Figure 18: Misc.



Figure 19: Misc.



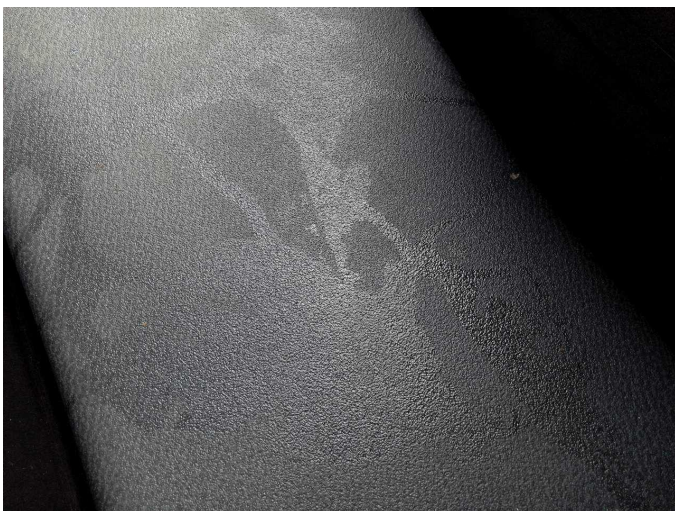
Figure 20: Misc.



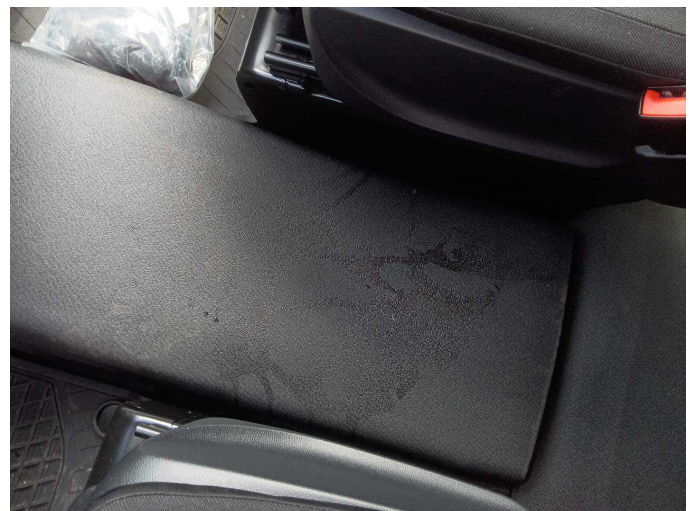
Figure 21: Misc.



Figure 22: Misc.



Damage 1: Interior: Interior (Verschmutzt) - Clean



Damage 1: Interior: Interior (Verschmutzt) - Clean



Damage 2: Wheel / tyres: Alloy rim - front right side - Scratch(es) - Loss in value



Damage 2: Wheel / tyres: Alloy rim - front right side - Scratch(es) - Loss in value



Damage 3: Instrument panel: Instrument cluster - Non-operational - Perform diagnosis



Damage 4: Mudguard - left side: Mudguard - left side - Scratched - Repair and paint



Damage 4: Mudguard - left side: Mudguard - left side - Scratched - Repair and paint



Damage 5: Mudguard - right side: Mudguard - right side - Deformed - Repair and paint



Damage 5: Mudguard - right side: Mudguard - right side - Deformed - Repair and paint



Damage 5: Mudguard - right side: Mudguard - right side - Deformed - Repair and paint



Damage 6: Vehicle glazing: Windscreen - Stone chips - Replace



Damage 6: Vehicle glazing: Windscreen - Stone chips - Replace



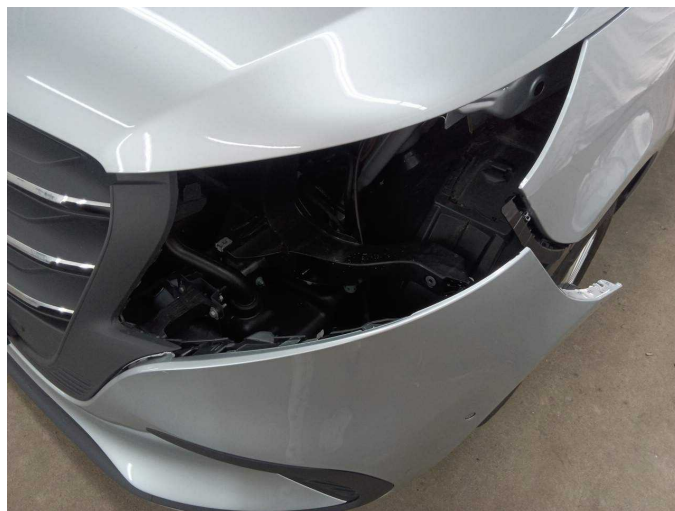
Damage 7: Front bumper: Front bumper (inkl. Halter links + rechts erneuern) - Broken / torn - Replace



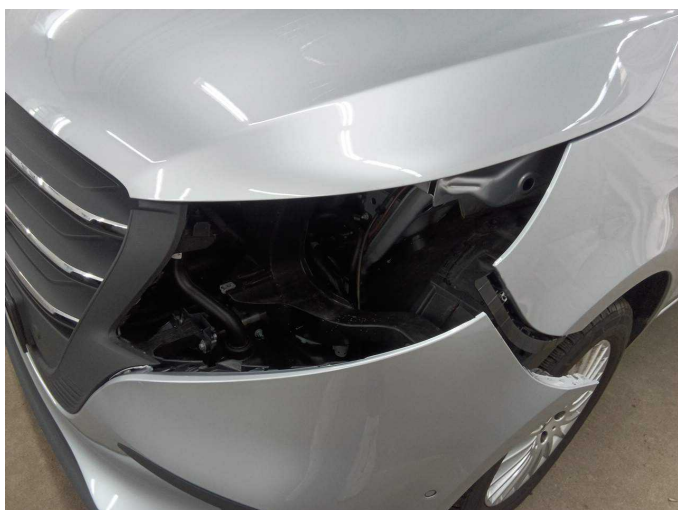
Damage 7: Front bumper: Front bumper (inkl. Halter links + rechts erneuern) - Broken / torn - Replace



Damage 7: Front bumper: Front bumper (inkl. Halter links + rechts erneuern) - Broken / torn - Replace



Damage 7: Front bumper: Front bumper (inkl. Halter links + rechts erneuern) - Broken / torn - Replace



Damage 8: Headlight: Headlight - left side (+ rechts) - Missing - Replace



Damage 8: Headlight: Headlight - left side (+ rechts) - Missing - Replace