

## Expertise

Protocol number: 45753942  
Order No. / Reference: 26450066  
Inspection date: 1 Jun 2026

Manufacturer: Volkswagen

Model: Touran 2.0 TDI SCR Comfortline

VIN: WVGZZZ1T9RW001700



### Vehicle details

#### Manufacturer / Type / Model / Equipment

Volkswagen Touran 2.0 TDI SCR Comfortline

<b>Vehicle Identification number</b>	WVGZZZ1T9RW001700
<b>Mileage (Read)</b>	197,876 km
<b>First registration</b>	14 Sept 2023
<b>Number of holders</b>	1
<b>Next periodical technical inspection</b>	09/2026 (Report not on hand)

<b>Power / Engine displacement</b>	90 kw / 1,968 ccm
------------------------------------	-------------------

<b>Fuel type / Cylinder</b>	Diesel / 4
-----------------------------	------------

<b>Gearbox / Number of gears</b>	Manual / 6
----------------------------------	------------

<b>Type of drive</b>	Front drive
----------------------	-------------

<b>Type of vehicle</b>	Station wagon
------------------------	---------------

<b>Colour / colour code</b>	Pure White (C9A)
-----------------------------	------------------

<b>Doors / Seats</b>	5 / 5
----------------------	-------

<b>Upholstery type</b>	Cloth
------------------------	-------

<b>Colour of upholstery</b>	Black-Anthracite
-----------------------------	------------------

<b>Re-import</b>	no
------------------	----

<b>readiness to drive</b>	Roadworthy
---------------------------	------------



## Vehicle details

<b>Maintenance booklet / proof</b>	digital proof / complete	<b>Next maintenance in</b>	12,400 km
<b>Last service on / at</b>	01/2026 at 180,267 km		
<b>Key is / should be</b>	2 / 2	<b>FZG documents</b>	ZB#2 (B) was available (copy), ZB#1 (S) was not available.
		<b>Letter No.</b>	GX280984
<b>Previous damage / Accident</b>	Detectable	<b>Repainting</b>	Detectable
<b>Inspection conditions</b>	sufficient	<b>Lifting equipment / pit</b>	yes
<b>Test drive</b>	Not performed	<b>Engine function test</b>	Performed
<b>readiness to drive</b>	Roadworthy		
<b>Manufacturer key number/ type code number</b>	0603 / CNT 00249		
<b>Emission standard</b>	EURO6;WLTP;AP;PI/CI; M, N1 I	<b>fine dust sticker</b>	
<b>Permitted total weight</b>	2,190 kg	<b>Empty weight</b>	

## Tyres

### Mounted tyres

#	Tyre size	Type of tyre	Manufacturer	Tread depth
1)	205/60 R16 96V	Summer tyres on Light alloy	Pirelli	3mm / 3mm
2)	205/60 R16 96V	Summer tyres on Light alloy	Pirelli	5mm / 5mm

### Replacement

Typ	Tyre size	Type of tyre	Manufacturer	Tread depth
Tirefit		Expiration date 04/2027		

**Legend: Tread depth information for the left tire is listed first, for the right tire it is listed second on the axle in the direction of travel.**



## Equipment

### Standard equipment

- Storage compartment with lid on the instrument panel
- Airbag for driver and front passenger
- Adaptive Cruise Control (ACC) with speed limiter
- third brake light
- black roof rails
- Decorative inlays "Piano Black"
- Tachometer
- Electronic parking brake including auto-hold function
- Automatic headlight control with daytime running lights
- Windscreen made of laminated safety glass, heat and sound insulating
- Baggage management package
- Additional luggage compartment lighting
- Transmission: 6-speed manual transmission
- Rear window heated
- Interior lights with delayed shut-off and dimming function, 2 reading lights front and rear
- Headrests (3) in the 2nd row of seats
- Black radiator grille with chrome strips on the slats
- Headlight range control
- front center armrest
- Fatigue detection
- Emergency braking assistant "Front Assist" (for automatic distance control ACC up to 210 km/h)
- Proactive occupant protection system in conjunction with "Front Assist" and "Side Assist"
- Rain sensor
- Wheels: Tire pressure monitoring system
- Gearshift knob in leather
- Drawers under the front seats
- Seat belts: 3 three-point automatic seat belts in the rear
- Seats: Front passenger seat backrest folds down completely
- Seats: Lumbar support in the front
- Lane keeping assistant "Lane Assist"
- Start-stop system
- Bumpers in body color
- Textile floor mats
- First aid kit, warning triangle and high-visibility vest
- Warning tone and light for unfastened front seat belts
- Green thermal insulation glazing
- Black trim strips on the side windows
- Storage compartments in the overhead console
- Airbag, head airbag system for front and rear passengers
- Exterior mirror housings and door handles in body color
- Headliner in Storm Grey
- Decorative inlays "New Brushed Design"
- Diesel particulate filter
- Parking assistance
- Electronic Stability Program (ESP) with counter-steering support
- Pedestrian and cyclist detection as well as active front hood
- luggage compartment cover
- Height-adjustable luggage compartment floor
- Glove compartment with cooling option
- Rear window wiper with intermittent function
- Interior mirror automatically dimming
- ISOFIX mounting points on rear seats
- Front headrests
- Steering wheel: Multifunction steering wheel in leather
- Illuminated makeup mirrors in the sun visors
- Multifunctional camera
- Non-smoking version
- Emergency call service
- Upholstery in fabric
- Radio accessories: 8 speakers
- Radio accessories: Digital radio reception DAB+
- Wheels: Light alloy (4) "Karlstad" 6.5 J x 16
- Wheels: Tire Mobility Set
- Keyless start system without safe locking
- electromechanical power steering
- Seats: 3 individual seats in the 2nd row
- Seats: Folding tables on the backs of the front seats
- Seats: Comfort seats in the front
- Seats: Front seats are height-adjustable
- Lane change assistant "Side Assist" and parking assistant
- 12V power outlet on the rear of the center console
- Telephone interface
- USB-C interface
- Prepared for "We Connect" and "We Connect Plus"
- Electronic immobilizer
- Central locking without safe locking, with remote control and 2 remote folding keys



### Extra equipment

- Active Lighting System PLH
- Towbar, foldable with electric release
- Anti-theft alarm system (with interior monitoring, backup horn and tow-away protection)
- Digital Cockpit Pro, multicolor (various info profiles selectable)
- Heated windscreen (TDI) (Laminated safety glass windscreen, noise-reducing and heated; 180 A three-phase alternator)
- Fog lights and cornering lights
- Package: Business Premium incl. Navigation (Air Care Climatronic air conditioning - Lumbar support front, electrically adjustable on driver's side, massage function driver's side - Multifunction leather steering wheel - Cargo net partition - Automatically heated windshield washer nozzles front - Headlight cleaning system - Drawer under the right front seat - Microfleece seat center panels "ArtVelours" - Top comfort seats front - Heated front seats - Height-adjustable front seats, ergoActive seat on the driver's side - Washer fluid level warning light)
- Ambient lighting (ambient lighting, light strips on the front door trim, illuminated door handles and front door armrests - "Piano Black" decorative inlays for the instrument panel and front door trim - interior lights with delayed shut-off and dimming function, 2 LED reading lights front and rear - LED light in the front footwell)
- Tailgate with electric opening and closing
- Paint finish: Special color Pure White
- Navigation system "Discover Media" incl. "Streaming & Internet" (20.3 cm (8 inch) touchscreen - 8 speakers - digital radio reception DAB+ - USB-C interfaces (up to 45 W charging power) - Bluetooth mobile phone interface)
- Package: Mirror in conjunction with. Active Lighting System P19
- Keyless Access PE2 locking and starting system
- Keyless locking and starting system "Keyless Access" with safe locking mechanism
- Voice control
- "Comfort" telephone interface with inductive charging function (hands-free system)

### Brief expert findings

Documents submitted	At the time of the inspection, the vehicle registration certificate Part 2 (title) was available, but the vehicle registration certificate Part 1 (document) was not. (Copy)
VIN comparison	The vehicle identification number (VIN) was read from the vehicle and its conformity with the submitted documents was confirmed by the undersigned during the inspection.
Inspection	The inspection conditions were sufficient for the assessment of the vehicle. Lifting equipment and/or a pit were available for examining the vehicle.
Test drive	No test drive/shunting maneuver was carried out during the inspection of the vehicle.
Engine function test	An engine test run was performed.
readiness to drive	The vehicle was roadworthy at the time of inspection.

### Value reducing factors

No.	Component group	Description
1	Rear bumper	Rear bumper - Scratch(es) - Paint
2	Bonnet	Bonnet (Sandstrahleffekt) - Stone chips - Paint

### Wear and tear

No.	Component group	Description
1	Interior	Interior - Scratch(es) - No deduction
2	Vehicle glazing	Windscreen - Stone chips - No deduction
3	Mudguard - left side	Mudguard - left side - Stone chips - No deduction
4	Front bumper	Front bumper - Stone chips - No deduction
5	Door - rear right side	Door - Stone chips - No deduction

The vehicle shows signs of wear and tear commensurate with its age and use.



## Previous damages

No.	Previous damage	Extent of damage (Net)
1	Front, Professionally repaired, Invoice of repair done Non-existent	

## Repainting

No.	Repainting
1	Bonnet, Professionally carried out, Invoice of repair done Non-existent

## Paint coat thickness measurement

Bonnet	163 µm
--------	--------

## Order/Scope of Order

An order was placed to prepare a sales report for the described vehicle. This report includes the following:

- Description of key vehicle information
- Documentation of equipment features  
*(Delivery by third-party service providers)*
- Documentation of damage, defects, missing parts
- Documentation of prior damage, unrepaired prior damage, repainting
- A brief visual or functional inspection of the equipment details, if possible.  
*(Functional testing of driver assistance systems is not included in the scope of services!)*
- a photographic documentation of the vehicle

## Basis for the order

This product is based on the guidelines for vehicle returns and valuations published by Alphabet Fleet GmbH. The expert makes the specific findings in each individual case objectively, within the framework of the prescribed standards, based on their own expertise.

The vehicle inspection takes place in a fully assembled, unassembled state.

Damage or defects that can only be detected during disassembly/diagnostic work or through further investigation remain within the realm of prognostic risk. An increased risk exists due to concealed defects caused by fraudulent misrepresentation and which were not identifiable by the expert.

Damage or defects resulting from normal use or wear and tear of the vehicle will be accepted in accordance with the applicable standard.

There was no explicit identification or monetary consideration of the expected features within the product.

Features which, in their nature and extent, slightly exceed normal use but do not constitute unacceptable damage, will be documented and indicated as signs of wear, if applicable.

Damage or defects that, according to the applicable standard, can no longer be attributed to normal use or wear and tear are listed under "Value Reducing Factors" in the product description.

Depending on the product specification, a monetary ID can be provided. If this takes place, the costs can be 100% d or pro rata depending on the vehicle's age and mileage.

## Previous damages

Professionally repaired previous damages were found at the vehicle.



Figure 1: Diagonal front (left)



Figure 2: Diagonal front (right)



Figure 3: Diagonal rear (left)



Figure 4: Diagonal rear (right)

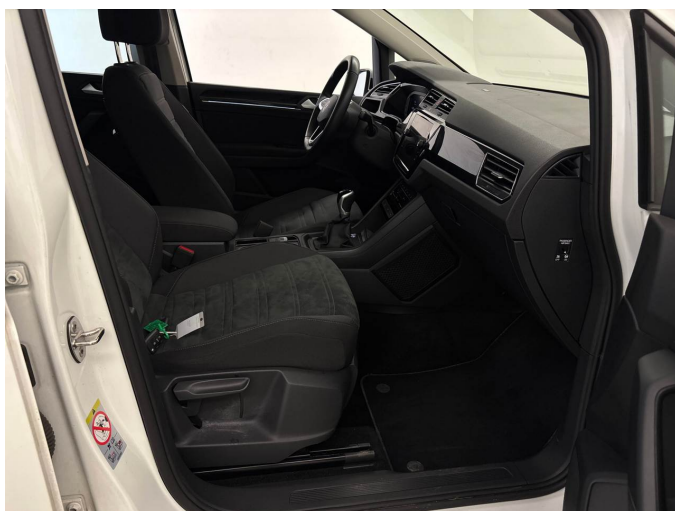


Figure 5: Interior - front

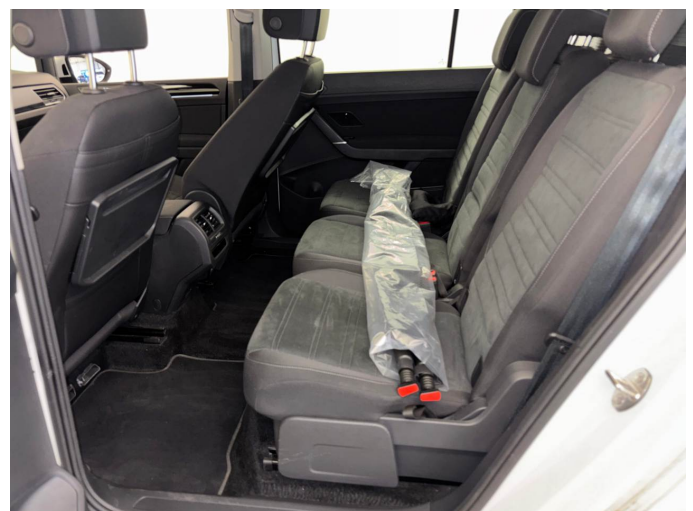


Figure 6: Interior - rear



Figure 7: Instrument cluster



Figure 8: Instrument panel



Figure 9: Interior 360° view



Figure 10: Cargo area

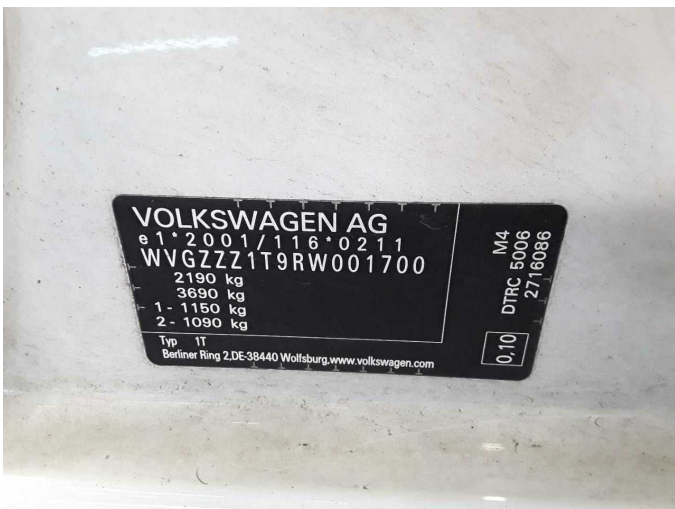


Figure 11: VIN

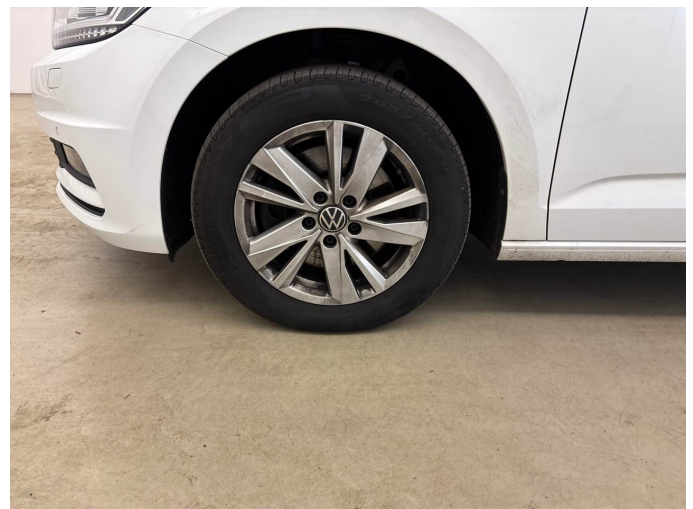


Figure 12: Mounted tyres



Figure 13: Documents



Figure 14: Navigation



Figure 15: Misc.



Figure 16: Misc.



Figure 17: Misc.



Figure 18: Misc.



Figure 19: Misc.



Figure 20: Misc.



Figure 21: Misc.



Figure 22: Misc.



Figure 23: Misc.



Figure 24: Misc.



Figure 25: Misc.



Figure 26: Misc.



Figure 27: Misc.



Figure 28: Misc.



Figure 29: Misc.



Damage 1: Rear bumper: Rear bumper - Scratch(es) - Paint



**Damage 1:** Rear bumper: Rear bumper - Scratch(es) - Paint



**Damage 1:** Rear bumper: Rear bumper - Scratch(es) - Paint



**Damage 2:** Bonnet: Bonnet (Sandstrahleffekt) - Stone chips - Paint



**Damage 2:** Bonnet: Bonnet (Sandstrahleffekt) - Stone chips - Paint



**Damage 2:** Bonnet: Bonnet (Sandstrahleffekt) - Stone chips - Paint



**Damage 2:** Bonnet: Bonnet (Sandstrahleffekt) - Stone chips - Paint



**Damage 2:** Bonnet: Bonnet (Sandstrahleffekt) - Stone chips - Paint



**Damage 2:** Bonnet: Bonnet (Sandstrahleffekt) - Stone chips - Paint



**Wear and tear 2:** Vehicle glazing: Windscreen - Stone chips - No deduction



**Wear and tear 2:** Vehicle glazing: Windscreen - Stone chips - No deduction



**Wear and tear 3:** Mudguard - left side: Mudguard - left side - Stone chips - No deduction



**Wear and tear 3:** Mudguard - left side: Mudguard - left side - Stone chips - No deduction



**Wear and tear 4:** Front bumper: Front bumper - Stone chips - No deduction



**Wear and tear 4:** Front bumper: Front bumper - Stone chips - No deduction



**Wear and tear 4:** Front bumper: Front bumper - Stone chips - No deduction



**Wear and tear 4:** Front bumper: Front bumper - Stone chips - No deduction



**Wear and tear 5:** Door - rear right side: Door - Stone chips - No deduction



**Wear and tear 5:** Door - rear right side: Door - Stone chips - No deduction



Repainting 1: Bonnet



Repainting 1: Bonnet



# Wartungshistorie

(gemäß Auftraggeber Informationen)

Fahrgestellnummer: WVGZZZ1T9RW001700

Hersteller / Modell: VOLKSWAGEN VOLKSWAGEN Touran 2.0 TDI SCR Comfortline

Datum	KM-Stand	Beschreibung
22.01.2026	180.267	Kraftstofffilter ern; Luftfiltereinsatz ern; Motoröl b. Wartung; Ölfilter ern; Regelwartungsdienst; Systemtest/Eigendiagnose; Wartung Sonstiges
18.12.2025	163.089	Bremse Sonstiges; Bremsklötze hinten; Bremsklötze vorne; Bremsscheiben hinten; Bremsscheiben vorne
05.11.2025	163.089	Bremsscheiben + Klötze h; Bremsscheiben + Klötze h; Bremsscheiben + Klötze v; Bremsscheiben + Klötze v
02.09.2025	149.532	Bremsflüssigkeit ern; Motoröl b. Wartung; Ölfilter ern; Regelwartungsdienst; Wartung Sonstiges
24.04.2025	120.250	Motoröl b. Wartung; Ölfilter ern; Regelwartungsdienst; Wartung Sonstiges
10.12.2024	88.591	Bremse Sonstiges; Bremsklötze hinten; Bremsklötze vorne; Bremsscheiben + Klötze h; Bremsscheiben + Klötze v; Bremsscheiben hinten; Bremsscheiben vorne; Kraftstofffilter ern; Luftfiltereinsatz ern; Motoröl b. Wartung; Ölfilter ern; Regelwartungsdienst; Systemtest/Eigendiagnose; Wartung Sonstiges
18.07.2024	58.957	Motoröl b. Wartung; Ölfilter ern; Regelwartungsdienst; Wartung Sonstiges
28.02.2024	29.209	Motoröl b. Wartung; Ölfilter ern; Regelwartungsdienst; Wartung Sonstiges